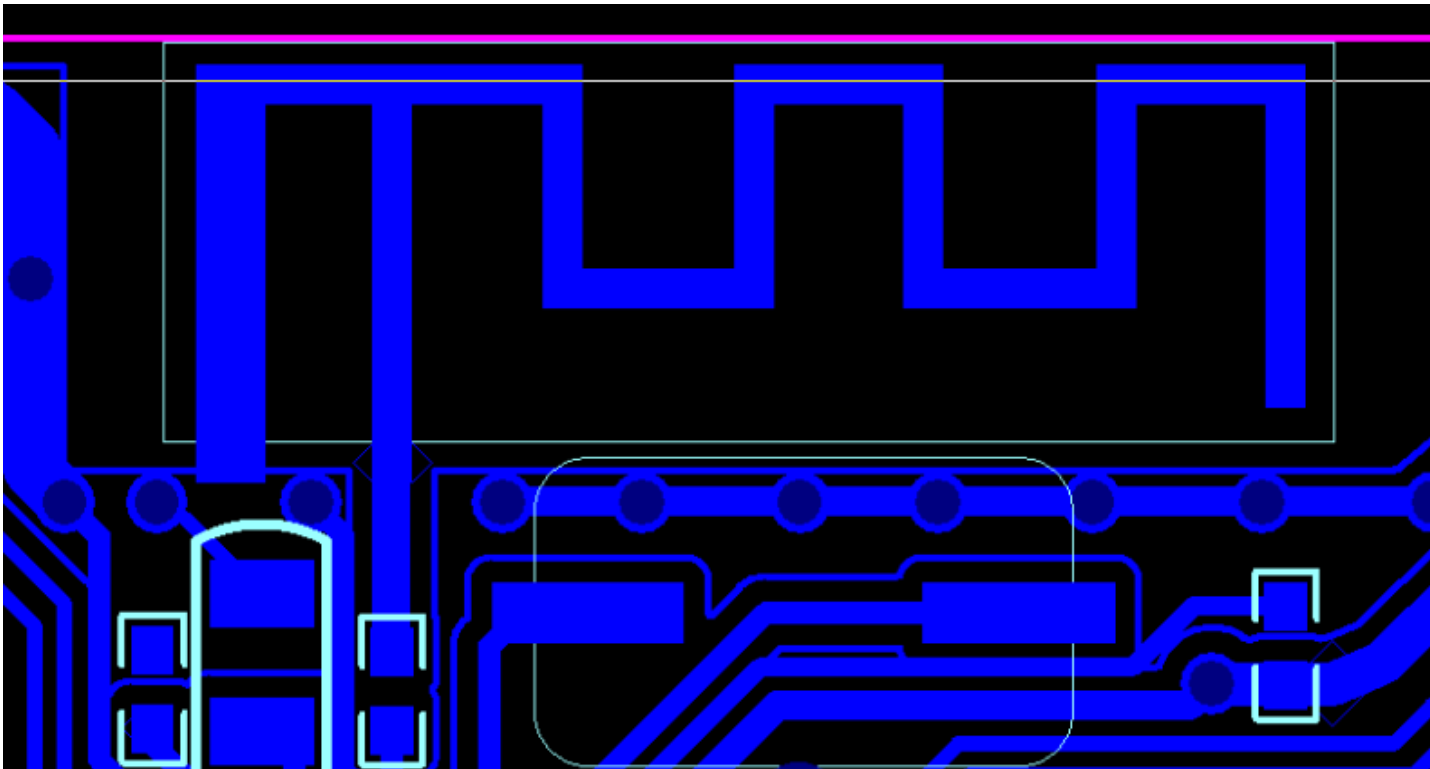


Antenna Specification

1. Antenna Introduction

Bluetooth antenna is directly mounted on the PCB board.

2. Antenna Shape



3. Antenna Parameters

The operating frequency of the Bluetooth antenna is between 2402-2480MHz, which generates resonance in this frequency band. The following table shows the main parameters of the antenna.

Frequency(MHz)	2402 ~2480MHz
VSWR	≤ 1.92
Impedance	50 Ohm Nominal
Return Loss	-10 dB Max
Radiation	Omni-directional
Gain (Peak)	4dBi
Polarization	Linear, Vertical
Admitted Power	2W
Connector	Tin

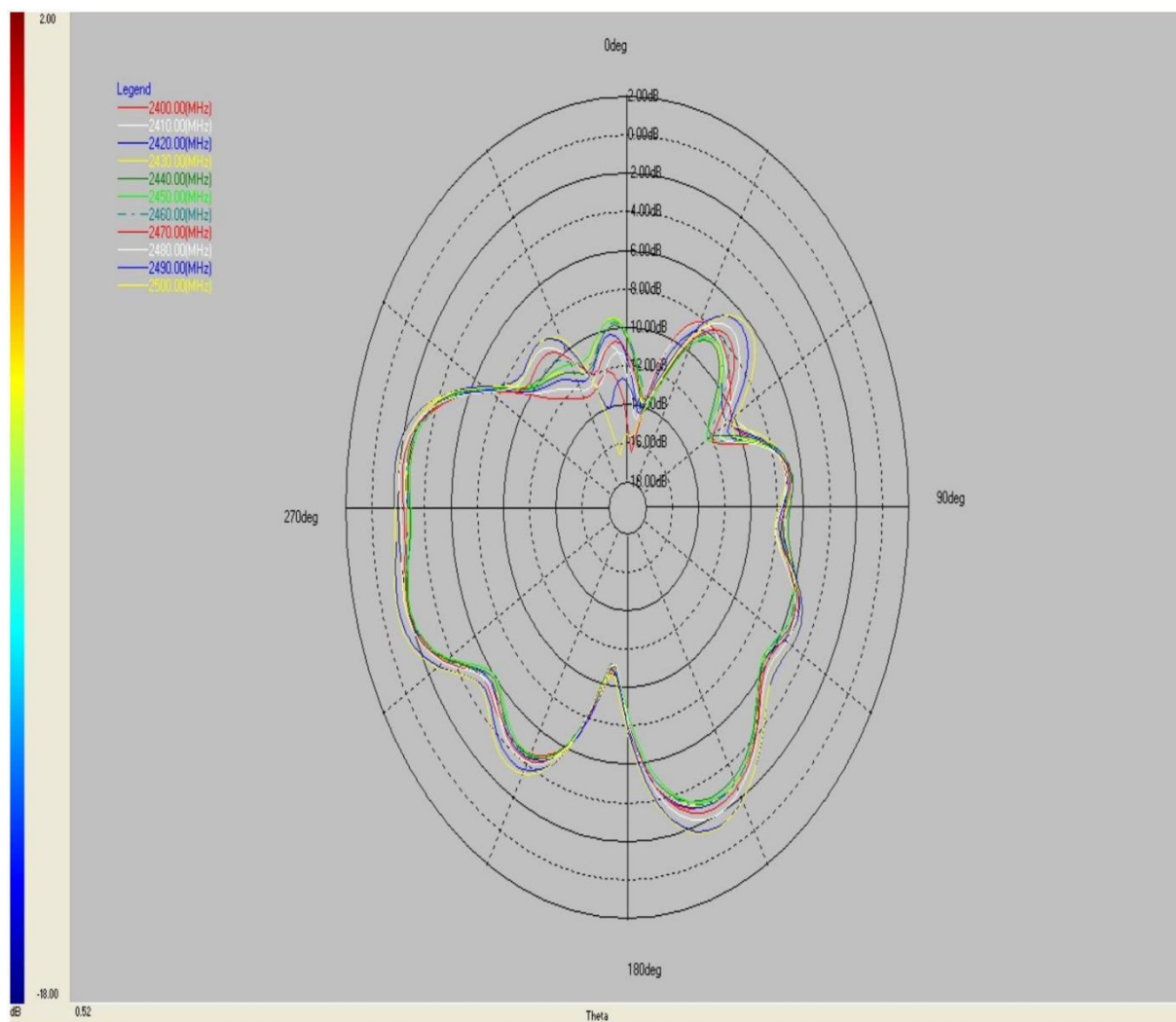
4. Antenna Gain Test Report

Spectrum Detector: PK
Test By: Andy
Test Result: PASS
Modulation: GFSK

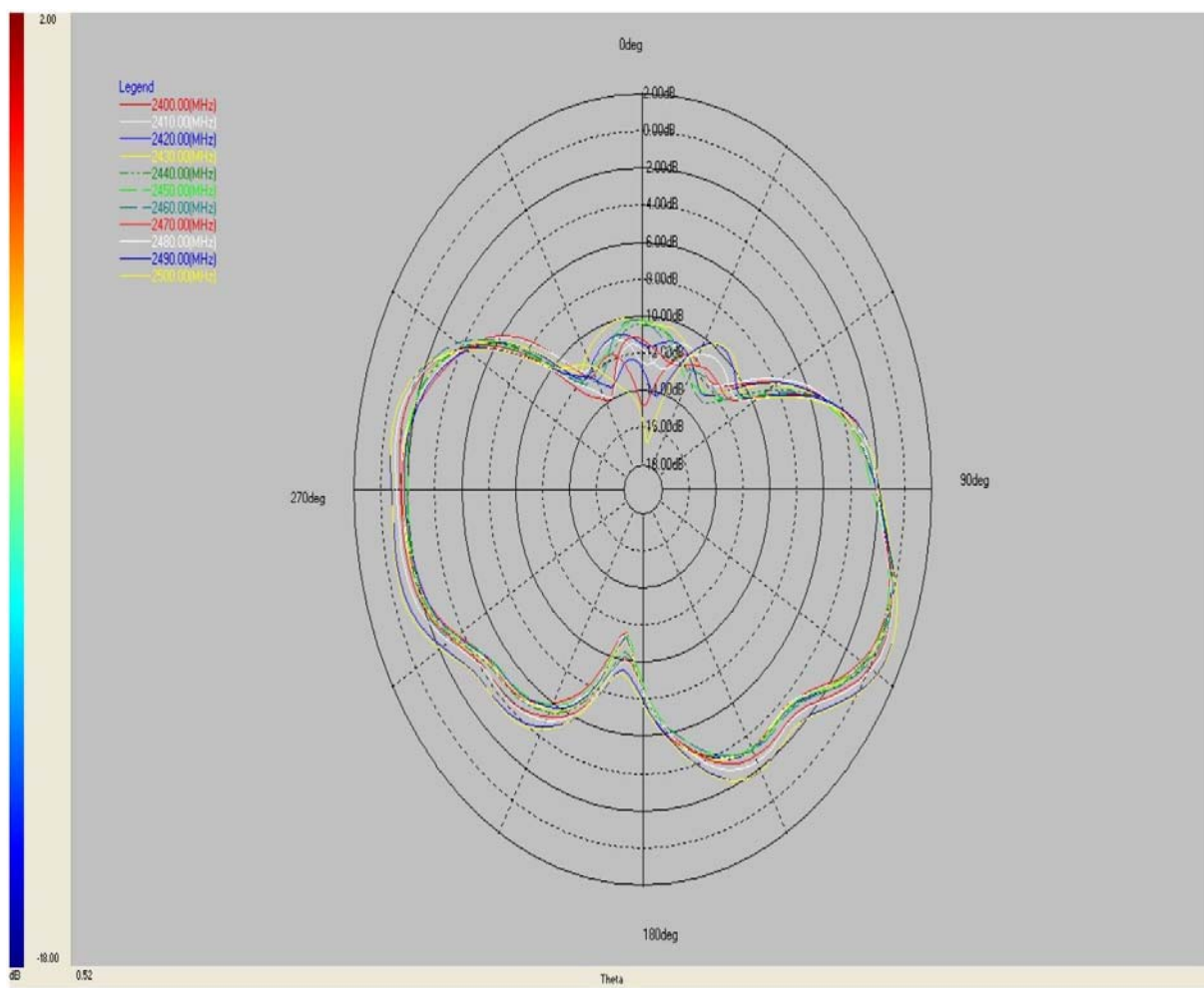
Test Date: May 28, 2017
Temperature: 28°C
Humidity: 55%

Frequency VNA (MHz)	E Total. dB(dB)
2400MHz	0.0403503
2410MHz	0.0886264
2420MHz	0.267381
2430MHz	0.193012
2440MHz	0.26366
2450MHz	0.0723139
2460MHz	0.36895
2470MHz	0.551525
2480MHz	4.040702
2490MHz	1.05232
2500MHz	1.08443

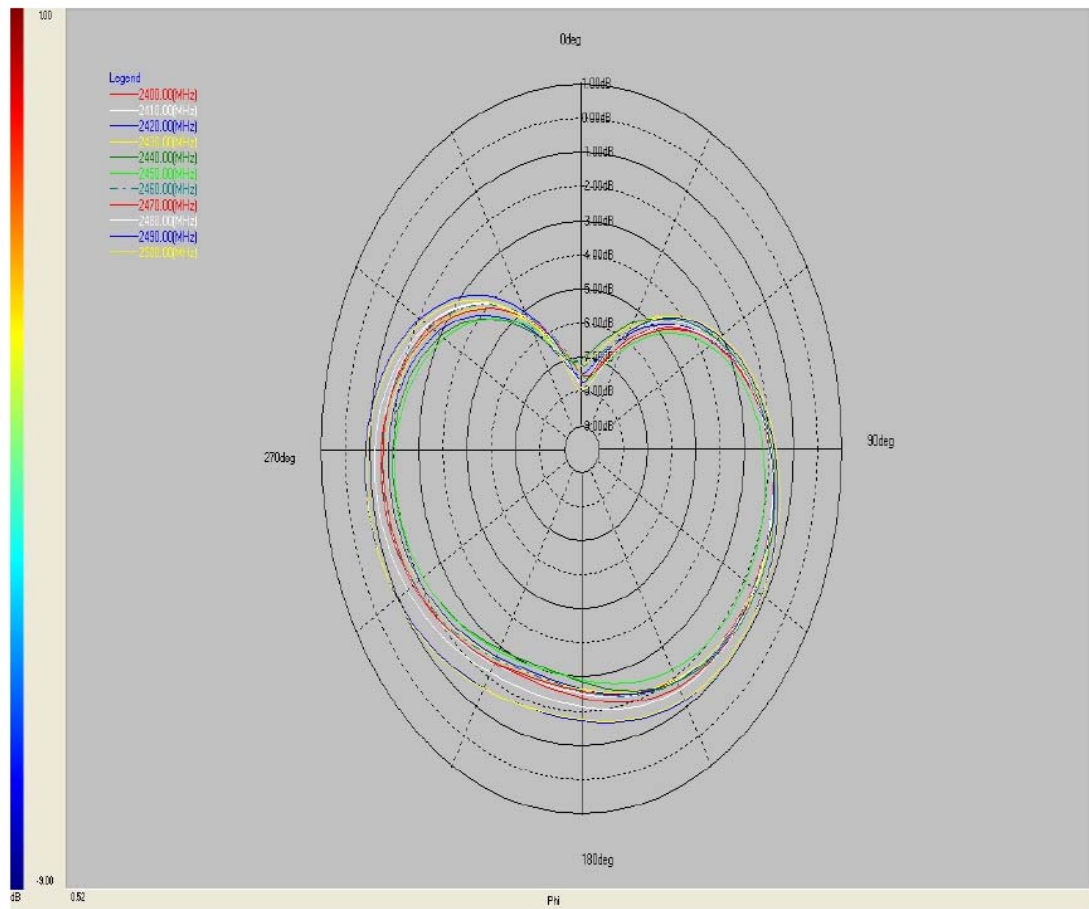
Direction map:



PHI 0°



PHI 90°



THETA 90 度

驻波比图:



Product Description

Huilan TECHNOLOGY (SHENZHEN) Co., LTD.

The EUT is a short range, lower power, Splash designed as a Device. It is designed by way of utilizing the GFSK, 1/4 Π -DQPSK and 8DPSK modulation achieves the system operating.

A major technical descriptions of EUT is described as following:

- A). Operation Frequency: 2402-2480MHz
- B). Modulation: GFSK, 1/4 Π -DQPSK, 8DPSK
- C). Number of Channel: 79
- D). Channel space: 1MHz
- E). RF Output power: 0.44dbm
- F). BIT Rate of Transmission: 1Mbps, 2Mbps, 3Mbps
- G). Antenna Type: PCB antenna
- H). Antenna GAIN: 4dBi