

CARE AND MAINTENANCE

TO CHARGE

- 1

Plug pin cord into device that needs charging.
- 2

Connect to your preferred power source.
- 3

Remote and rechargeable attachments' LED displays will blink quickly when battery is low.
- 4

Device will blink while charging. The LED display will stay solid once fully charged.

Remote: charging time - 120 minutes. Rechargeable attachments: charging time - 100 minutes, usage time - 80 minutes.

CLEANING

- 1

Silicone attachments can be cleaned in a variety of ways. Spray with Doc Johnson Toy Cleaner*, or wash with mild soap and warm water and wipe clean. Do not submerge. Allow to dry completely before storing separately from other toys in a cool, dry place. Use with water-based lubricant/glide. *Doc Johnson Toy Cleaner sold separately.
- 2

Accessories are water resistant.
- 3

Do not submerge.

NOTES

- 1

You can use remote and on-toy buttons in the same play session.
- 2

Remote is magnetic and can stick to machine base or magnetic surface of your choice.
- 3

MAKE IT A PARTY/ACTIVATE PARTY MODE: If both attachments are turned on, remote will control both attachments.
- 4

If not in the US, plug into universal adaptor and then plug into wall.
- 5

If using a VUL attachment (sold separately), place safety bumper on machine, then screw on VUL plug.



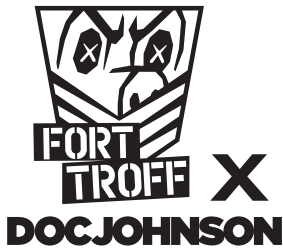
FCC Statement
This equipment has been tested and found to comply with the limits for a Class B digital device, pursuant to Part 15 of the FCC Rules. These limits are designed to provide reasonable protection against harmful interference in a residential installation. This equipment generates uses and can radiate radio frequency energy and, if not installed and used in accordance with the instructions, may cause harmful interference to radio communications. However, there is no guarantee that interference will not occur in a particular installation. If this equipment does cause harmful interference to radio or television reception, which can be determined by turning the equipment off and on, the user is encouraged to try to correct the interference by one or more of the following measures:
— Reorient or relocate the receiving antenna.
— Increase the separation between the equipment and receiver.
— Connect the equipment into an outlet on a circuit different from that to which the receiver is connected.
— Consult the dealer or an experienced radio/TV technician for help.
This device complies with part 15 of the FCC Rules. Operation is subject to the following two conditions:
(1) This device may not cause harmful interference, and (2) this device must accept any interference received, including interference that may cause undesired operation.
(2) Changes or modifications not expressly approved by the party responsible for compliance could void the user's authority to operate the equipment.
Changes or modifications not expressly approved by the party responsible for compliance could void the user's authority to operate the equipment.

This Remote control should be installed and operated with minimum distance 0mm between the radiator&your body.

For product information
scan code or go to
docjohnson.com/forttroff



FCC ID:2BA40-I-MX
IC: 30524-IMX



FORT TROFF ISSUED
GUNNER SYSTEM
MODULAR FUCK MACHINE

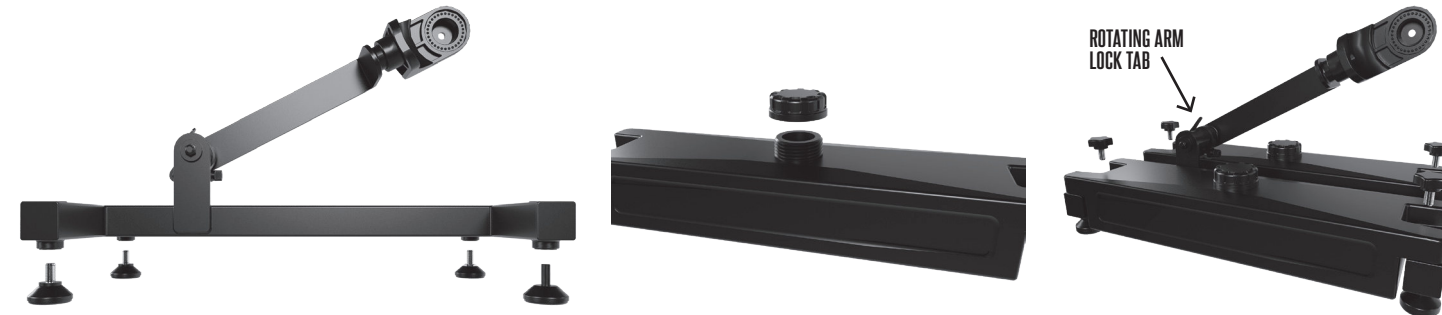
ASSEMBLY, USAGE, and CARE INSTRUCTIONS

ITEMS INCLUDED



ASSEMBLY

FOR MOUNTED USE



- ① Screw all four feet (I) to bottom of metal frame (H).
- ② Fill the Tanks (J) with clean water or play sand. Screw their lids on tightly.
- ③ Use the 4 small tank knobs (K) to attach the filled tanks (J) to the metal frame (H).
- ④ Locate the rotating arm lock tab and unlock it by lifting as shown. Once unlocked, the arm will rotate freely. Place it at desired height. Once in the desired position, lock it in place by pushing the lock tab in its original, locked position.
- ⑤ Attach the fuck machine (G) to the rotating arm, by screwing the large handle knob (N) through the machine holder into the machine itself, until tightly secure in the desired position.

FOR HAND-HELD USE



- ① Install Adjustable Machine Handle (O) as shown with Large Back Handle Knob (N). To adjust the handle's angle, unscrew the knob until the handle is free to rotate. Tighten the knob again at your desired position.
- ② To adjust front handle, unscrew fuck machine (G) nose until the machine's handle rotates freely. Once in the desired position, tighten the nose until firmly secure.

FOR STANDALONE HANDLE USE

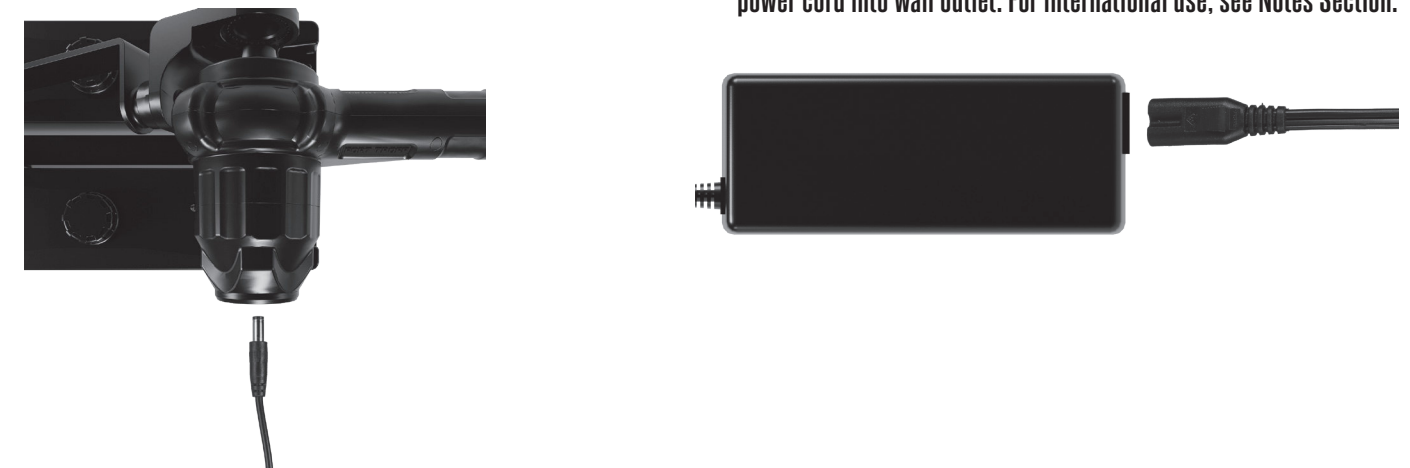
- ① Screw attachment onto handle.



USAGE

MACHINE ONLY OR MACHINE ATTACHED TO BASE

- ① Plug the rounded socket into the fuck machine.
- ② Plug the rubber socket into the bottom of the power bank. Plug power cord into wall outlet. For international use, see Notes Section.



TO GET STARTED

- ① Screw on attachment of your choice, as far as it will go with the buttons facing up, secure with locking ring. For Vac-U-Lock Assembly, see Notes Section.
- ② Hold both buttons on Accessory for 3 seconds or until each LED display is illuminated. Continue to press buttons to cycle through 3 rimming speeds and 7 vibrating functions. To turn off, hold each button for 3 seconds or until LED turns off.
- ③ Move the wheel on the back of the machine 1 click to put on standby mode. To begin and adjust thrusting motions, adjust the wheel on the back of the machine. To turn off, turn the wheel back until it clicks off.



TO CONTROL ON REMOTE

- ① Make sure that all LEDs on accessory are illuminated. Turn knob on remote from off to on.
- ② To begin and cycle through rimming/vibrating functions, press the buttons on the remote.
- ③ To begin thrusting, turn the knob until you find your ideal speed.
- ④ To turn off remote, turn knob back to Off position.



Remote control

Working Frequency:2404-2480MHz

Voltage: DC 3.3V from Battery

IC warning

This device complies with Industry Canada licence-exempt RSS standard(s).

Operation is subject to the following two conditions:

(1) This device may not cause interference and (2) this device must accept any interference, including interference that may cause undesired operation of the device.

Le présent appareil est conforme aux CNR d'Industrie Canada applicables aux appareils radio exempts de licence. L'exploitation est autorisée aux deux conditions suivantes :

(1) l'appareil ne doit pas produire de brouillage, et

(2) l'utilisateur de l'appareil doit accepter tout brouillage radioélectrique subi, même si le brouillage est susceptible d'en compromettre le fonctionnement.

Radiation Exposure Statement

This equipment complies with ISSED radiation exposure limits set forth for an uncontrolled environment. This equipment should be installed and operated with minimum distance 0mm between the radiator & your body.

Cet équipement est conforme aux limites d'exposition aux rayonnements ISSED établies pour un environnement non contrôlé. Cet équipement doit être installé et utilisé avec une distance minimale de 0mm entre le radiateur et votre corps.