

**Wire-Free Camera
Operation Instruction**

(BW6)

Customer Service

Claim

1-year

warranty for your device

Please email us:



aftersale@rraycom.com



Phone:
+1 2027384449

(Sun. - Thur. 8pm - 12pm)



Facebook

Raycomz@gmail.com

Packing List

- ① Camera *1 ② Bracket *1
- ③ USB Cable *1 ④ Instruction*1
- ⑤ Mounting Kit *1

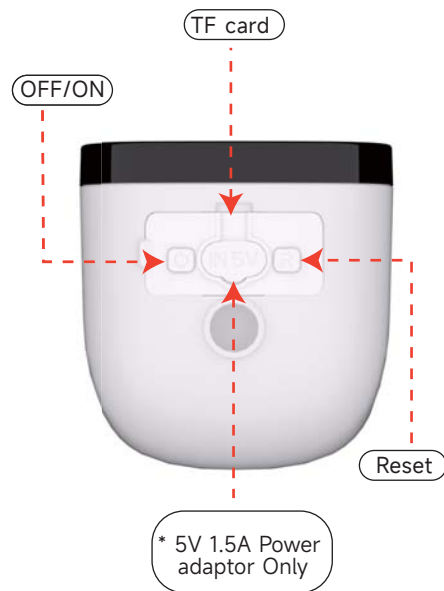
Appearance



BW6

01

At the bottom



At the bottom



Indicator light definition		
Reset	Green light flashes	●
Charging	Red light	●
Fully Charged	Off	●
No network	Blue light flashes	●
Wifi connected	Blue (when it wakes up)	●
Sleep	Off	

Quick start

Power-on

Press and hold the power button until you hear the prompt,

Reset

Press and hold the reset button for about 3 seconds,

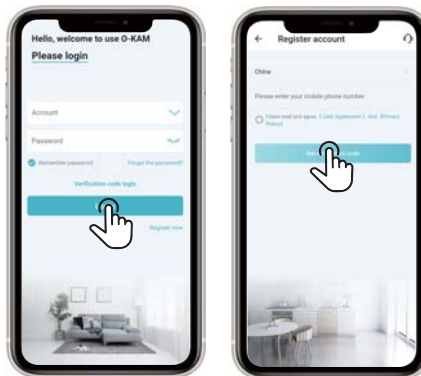
Step-1 >>> Download the APP

Scan the QR code to download the APP.
Or search for "O-KAM" to download through the app store (Google play/ APP Store).



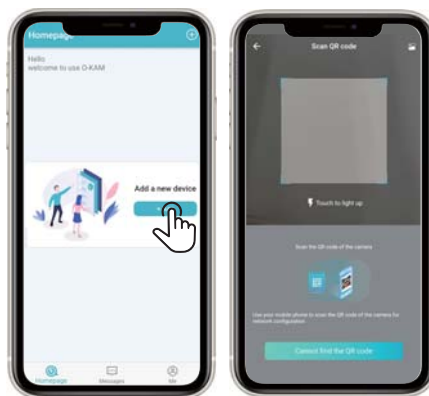
Step-2 >>> APP account registration

- ① Click "Register now" at the login interface
 - Select the address
 - Enter your phone number
 - Get the verification code.
- ② After entering the verification code you need to set the password and click Finish.



Step-3 >>> Add cameras

- ① Log in and click "Add" button found at the "Home" interface or click the "+" in the upper right corner.



Step-4 >>> Add cameras

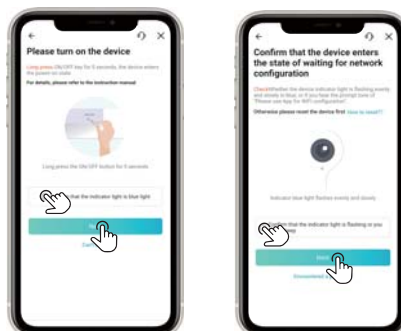
- ② At the QR code scanning interface, scan the QR code on the camera.





Switch the camera "On".
(No need for "Long press")
Click "Next" when the indicator light
flashes in blue slowly.

Confirm that the camera is ready for WiFi
configuration
when the indicator light flashes in blue
slowly. And click "Next"



5



Enable the location service of your phone, and allow the O-KAM APP to access the location. Confirm the WiFi and enter the

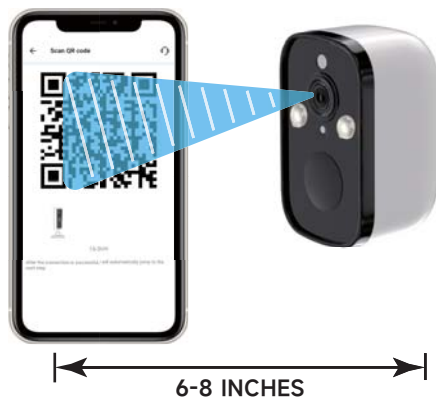
* Make sure the Wi-Fi is 2.4Ghz. WiFi



6



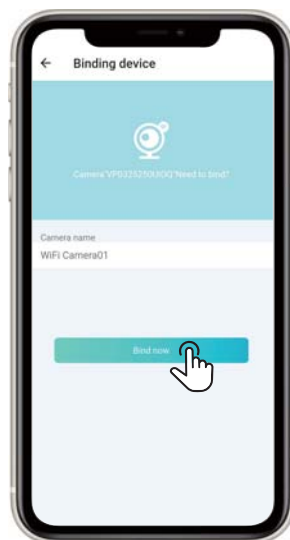
The APP will automatically generate a QR code. Point the camera lens at the QR code and keep it at a distance of 6-8 inches. You'll hear a beep and voice prompt when it's scanned successfully.



⑦



When the device is connected to the WiFi, name the camera and click "Bind Now".



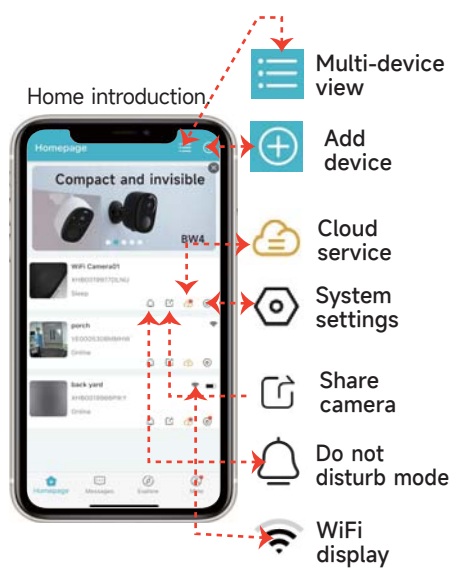
8




Please take the camera and phone to the location where you're going to install the camera, and then click "Next" to test the signal strength. Make sure there is strong WiFi signal strength at the location.



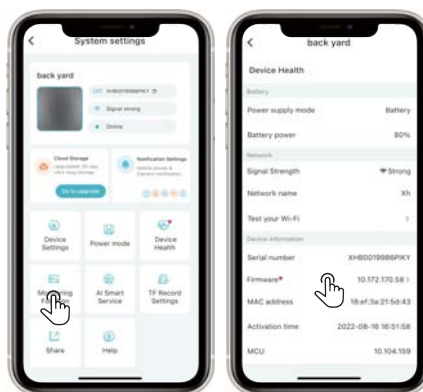
Step-5 >>> APP function introduction



Step-6 >>> Monitoring settings

Enter system settings "  "
-monitoring function

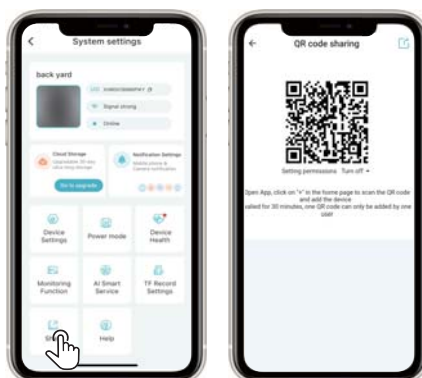
Tap on the "Device Health" - "Firmware" to
update (Suggested)



Step-7 >>> Share the device

Enter the system settings "🏠" - Share

Sharing method: Share the QR code to a user. The other user adds the camera by scanning the QR code;The QR code is valid for 30 minutes, and one QR code can only be shared with one user. Generate more QR codes for more members. Maximum of 4 people can live view at the same time.



Tutorial Videos

Please scan the QR code below



FCC Warning

This device complies with part 15 of the FCC Rules.
Operation is subject to the following two conditions:

(1) This device may not cause harmful interference,
and (2) this device must accept any interference
received, including interference that may cause
undesired operation.

Any Changes or modifications not expressly approved by the
party responsible for compliance could void
the user's authority to operate the equipment.

Note: This equipment has been tested and found to comply
with the limits for a Class B digital device, pursuant to
part 15 of the FCC Rules. These limits are designed to
provide reasonable protection against harmful
interference in a residential installation. This equipment
generates uses and can radiate radio frequency energy
and, if not installed and used in accordance with the
instructions, may cause harmful interference to radio
communications. However, there is no guarantee that
interference will not occur in a particular installation.
If this equipment does cause harmful interference to
radio or television reception, which can be determined
by turning the equipment off and on, the user is
encouraged to try to correct the interference by one
or more of the following measures:

- -Reorient or relocate the receiving antenna.
- -Increase the separation between the equipment and receiver.
- -Connect the equipment into an outlet on a circuit different from that to which the receiver is connected.
- -Consult the dealer or an experienced radio/TV technician for help.

FCC Radiation Exposure Statement:
The equipment complies with FCC Radiation exposure limits
set forth for
uncontrolled environment. This equipment should be installed
and operated with
minimum distance 20cm between the radiator and your body.