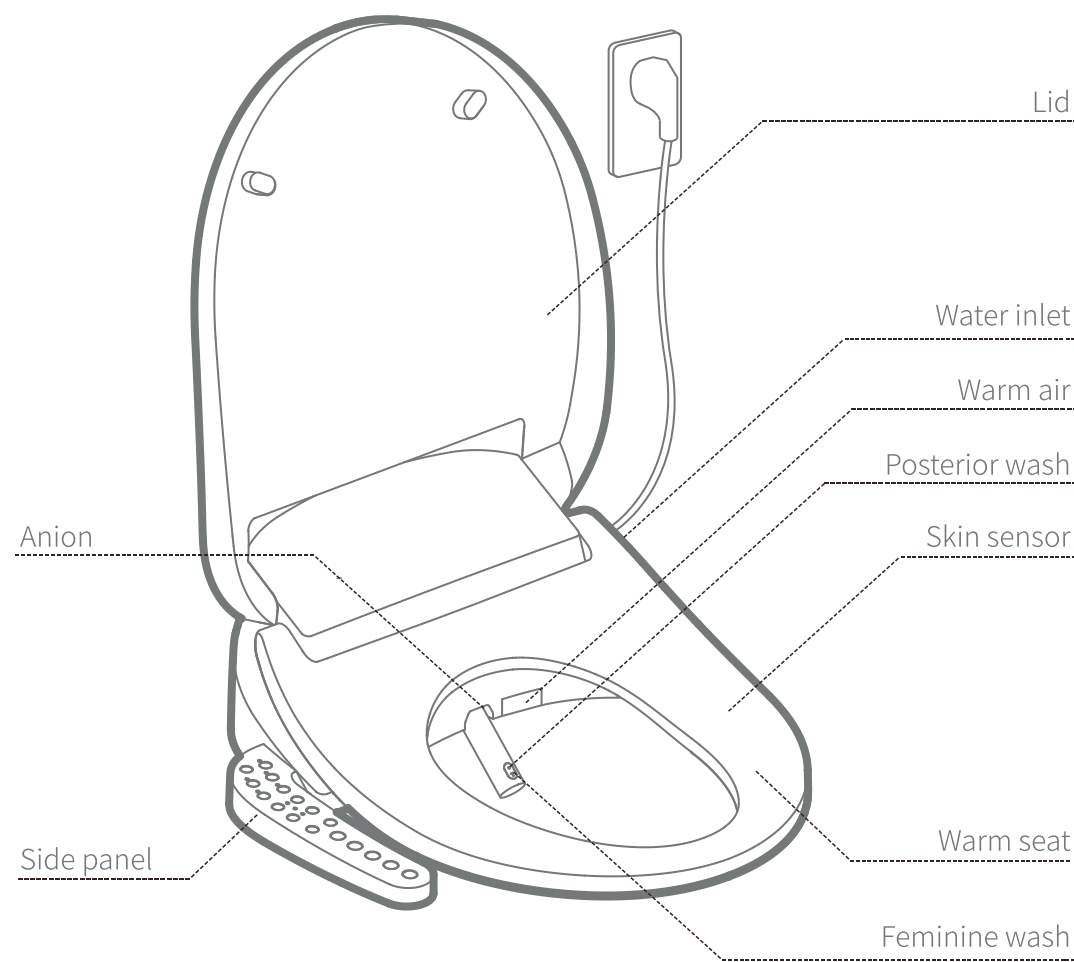
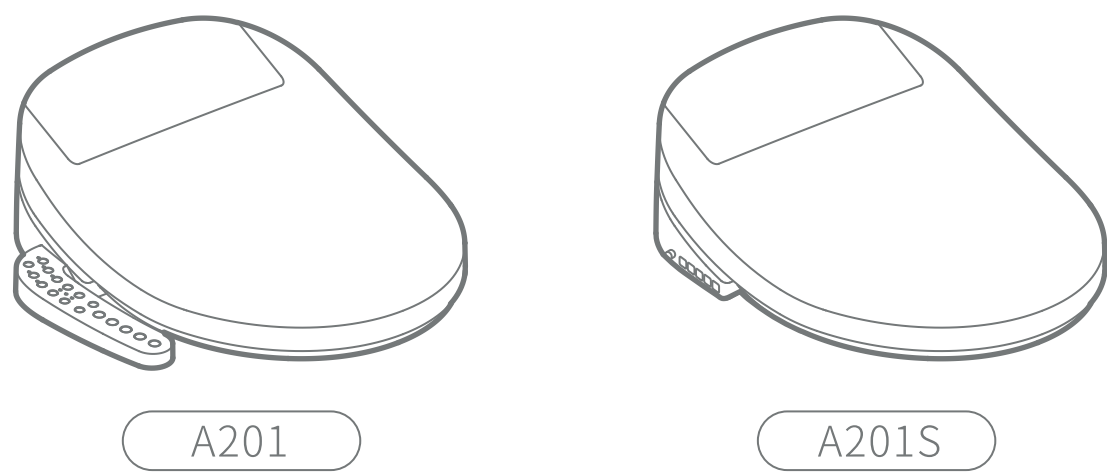
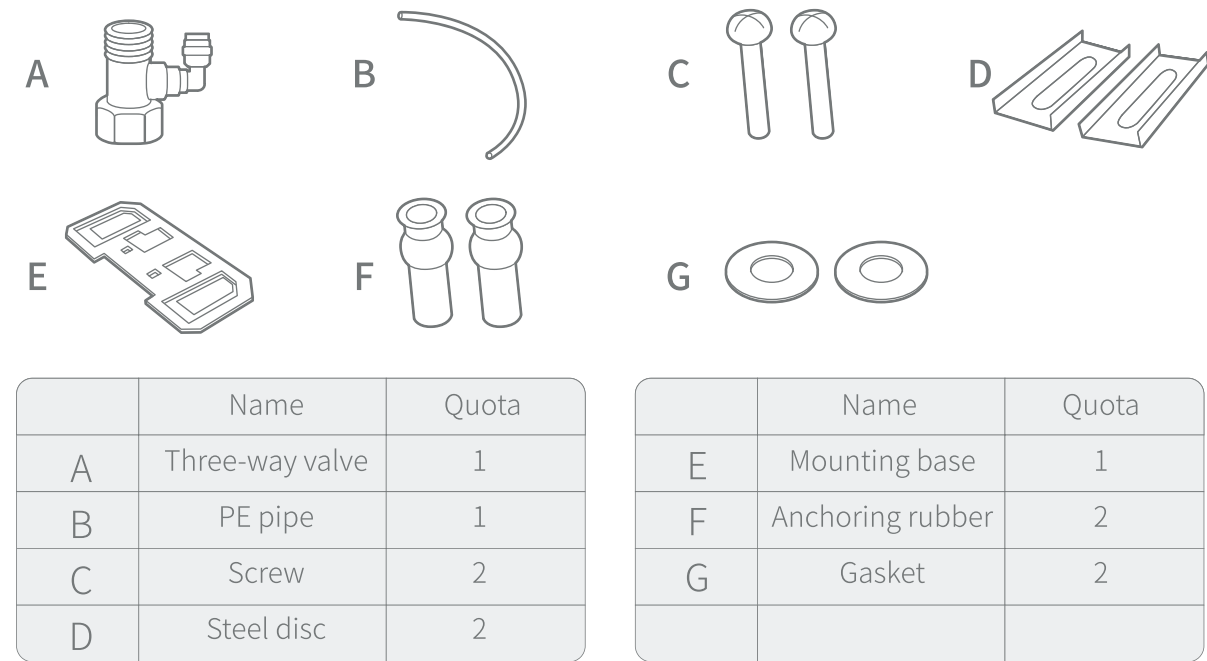


1 Components



2 Accessories



	Name	Quota
A	Three-way valve	1
B	PE pipe	1
C	Screw	2
D	Steel disc	2

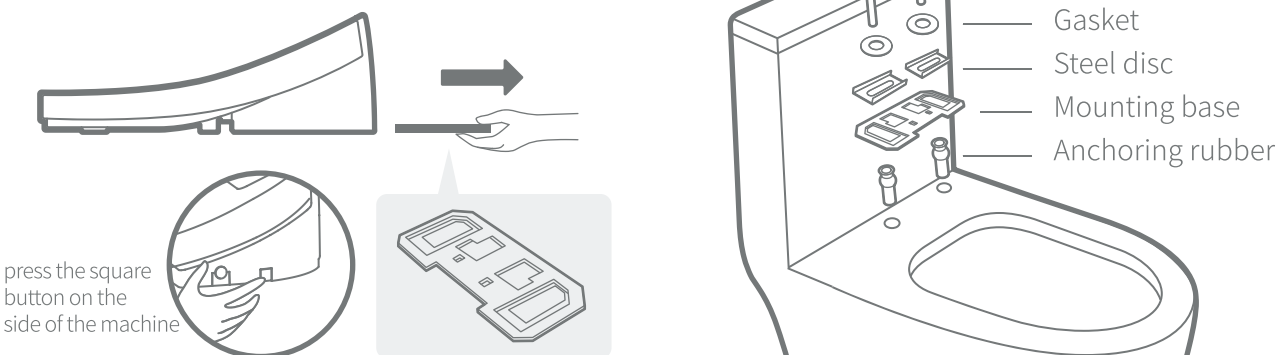
	Name	Quota
E	Mounting base	1
F	Anchoring rubber	2
G	Gasket	2

3 Installation ways

Precaution before installation

- 1.Ensure that the water pressure range of the inlet is between 0.05-0.75Mpa.
- 2.Be sure to use the original accessories and consumables.
- 3.Please do not switch on the power until the installation is completed to avoid failure.

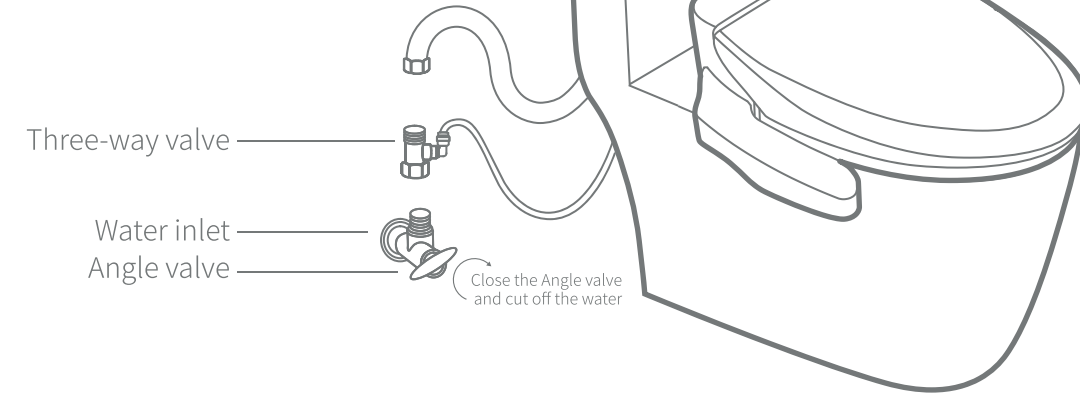
Method of mounting base



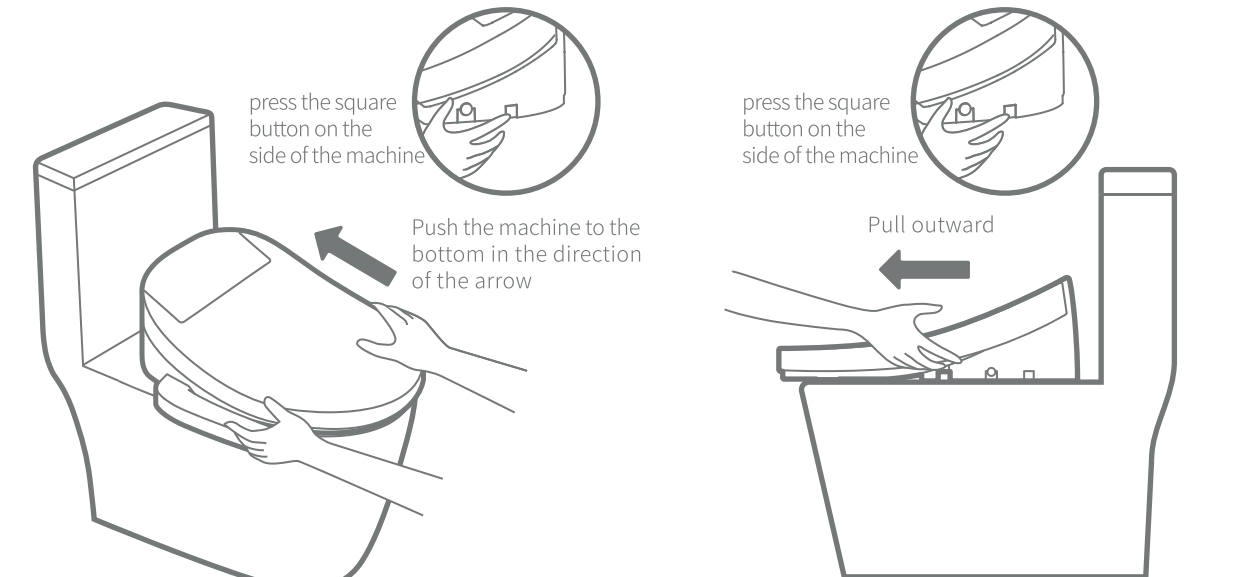
- 1.Draw the mounting base from the machine.
- 2.Install the accessories as shown in the diagram.

Connection of external water pipes

- 1.Close the Angle valve and cut off the water.
- 2.Connect Three-way valve's end with the upper water pipe of the toilet tank.
- 3.Connect the smallest end of the three-way valve with PE pipe.
- 4.Connect the other end of the PE pipe with the inlet hole of the machine.
- 5.Open the Angle valve to supply water.
- 6.Make sure all connections are free of water.



4 Installation and removal



- 1.Push with two hands when install the machine onto the toilet, and make sure the installation is in place.
- 2.Pull outward with two hands when separate the machine from the toilet.

5 Pilot run

Tips : the spraying time will be delayed by 5-10 seconds for the first time using after installation which is normal phenomenon,not a fault.

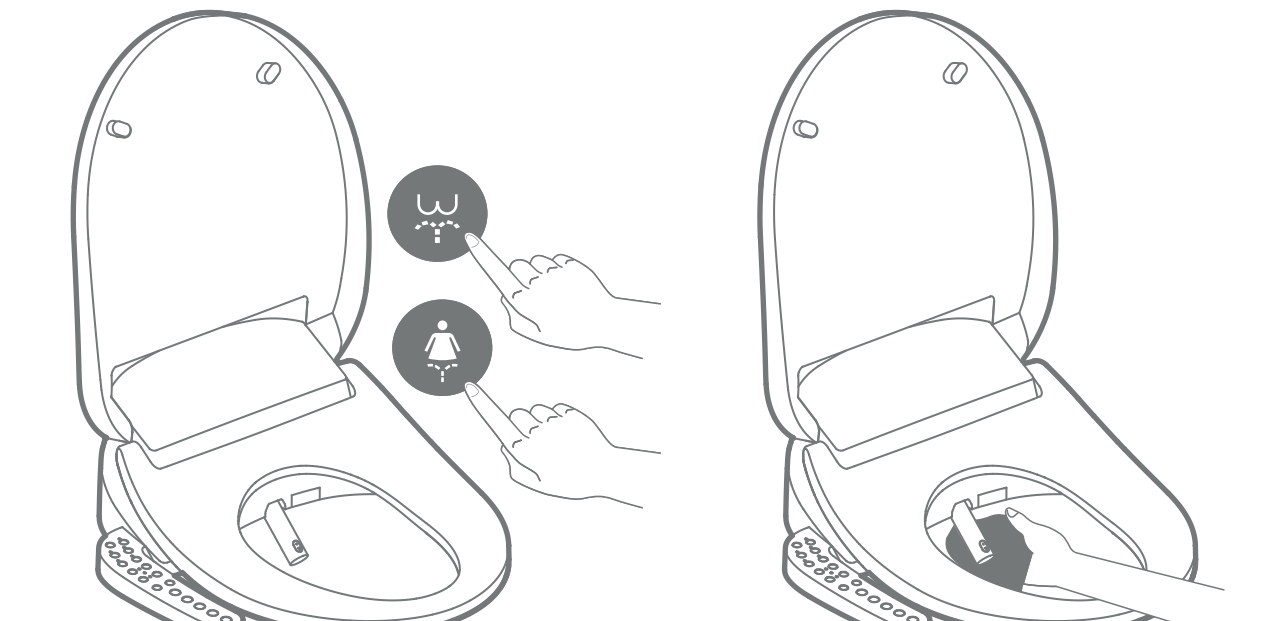
For operation

- 1.Connect the power plug to the socket of 110V/220V voltage.At this time, the floodlight and water temperature light flash.
- 2.Turn on the water source, and the water temperature light flashes. After 30 seconds, the water temperature light stops flashing and stays on, indicating that the machine has completed the self-test.

Function confirm

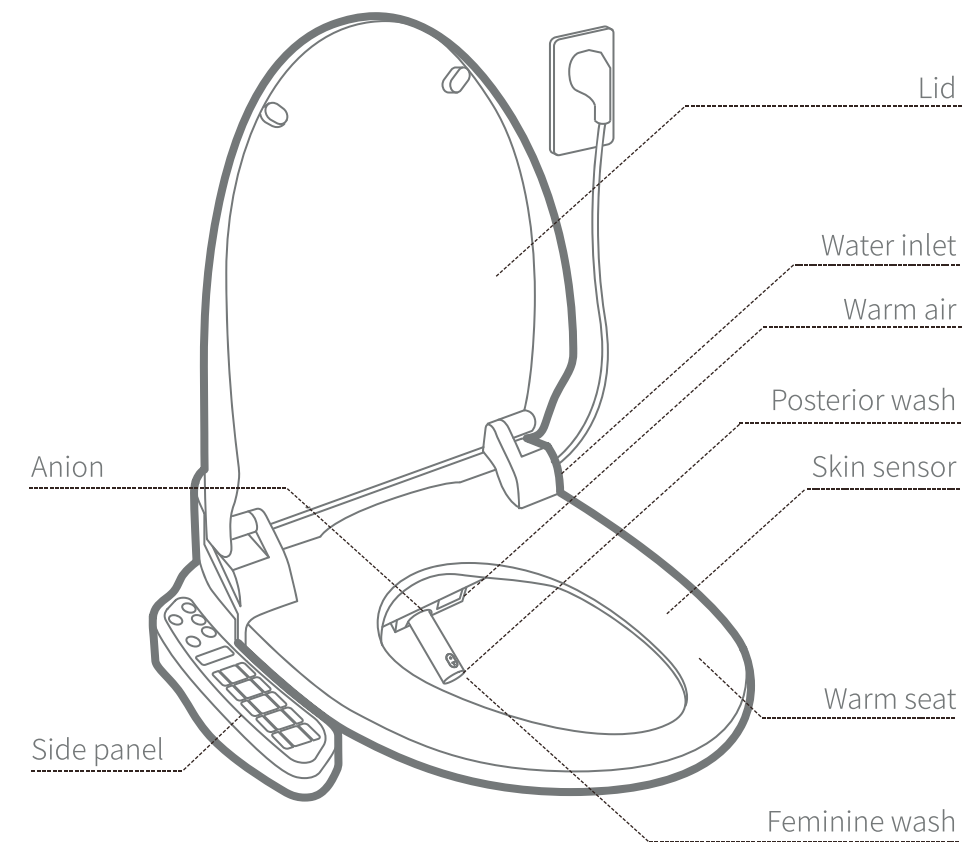
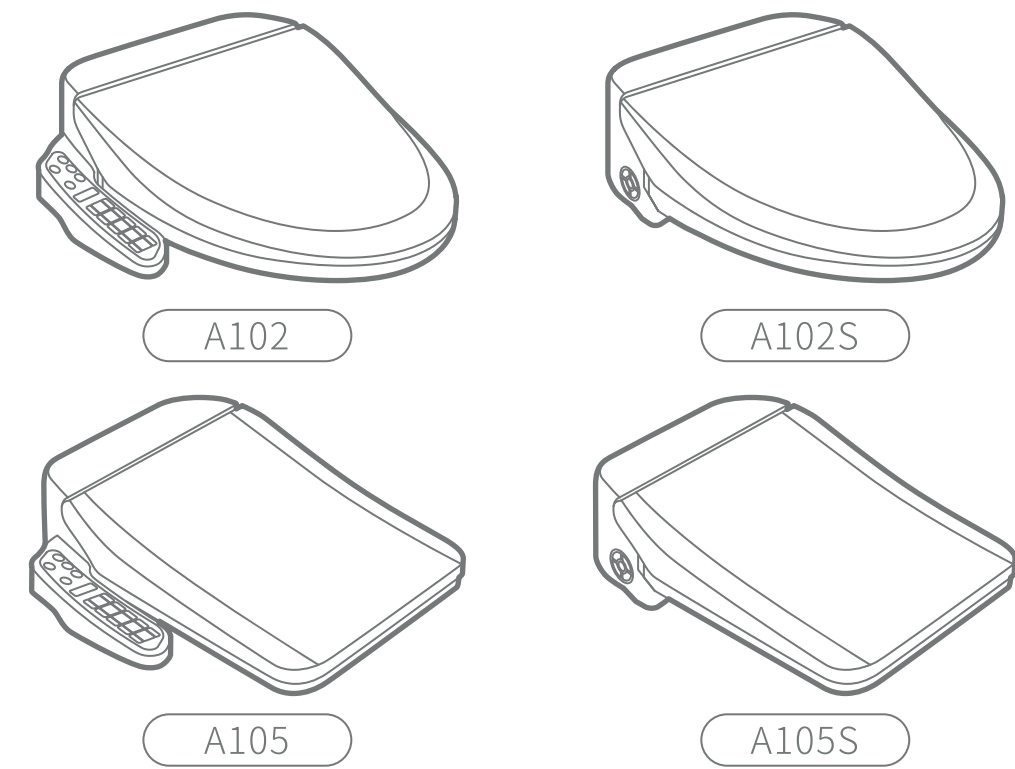
- 1.Confirm the functions accrodio to the instructions.

6 Cleaning method

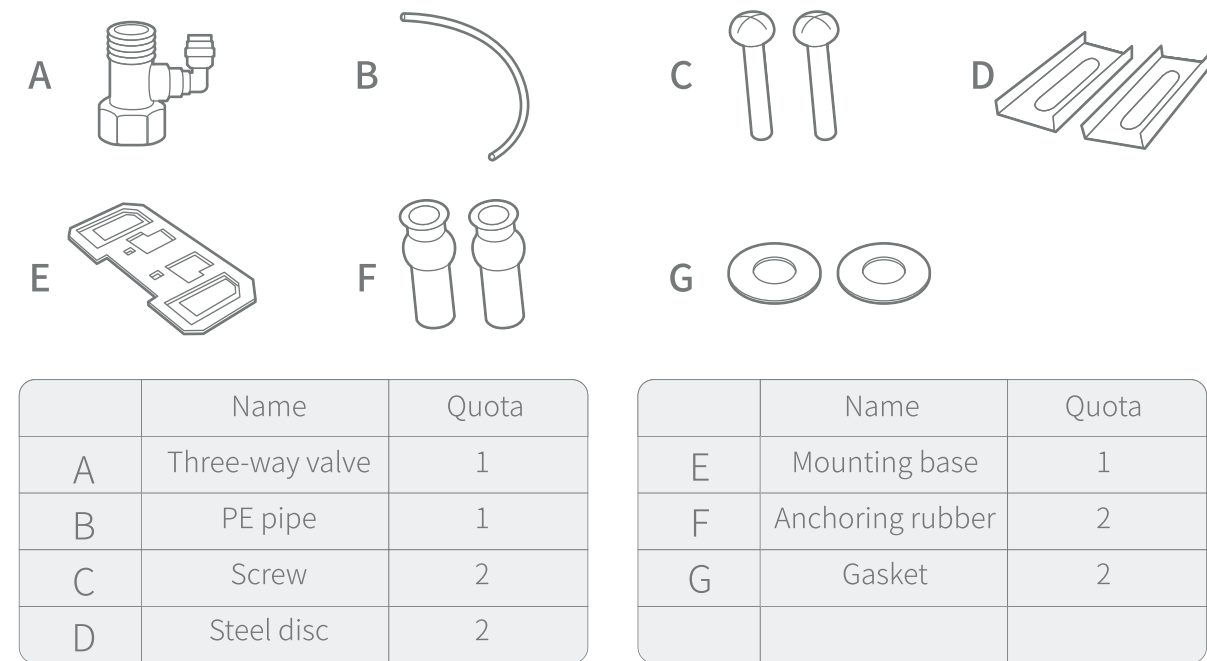


- 1.When no one is seating on the seat, press BIDE/CLEANING button, spray rod stretches, wash the nozzle.
- 2.Clean with toothbrush or soft cloth.After cleaning, press the STOP button to return the spray rod.

1 Components



2 Accessories



	Name	Quota
A	Three-way valve	1
B	PE pipe	1
C	Screw	2
D	Steel disc	2

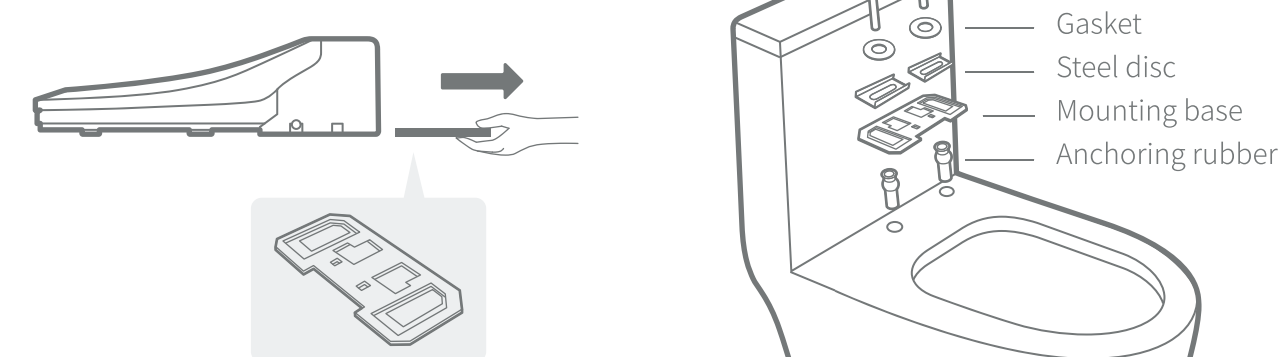
	Name	Quota
E	Mounting base	1
F	Anchoring rubber	2
G	Gasket	2

3 Installation ways

Precaution before installation

- 1.Ensure that the water pressure range of the inlet is between 0.05-0.75Mpa.
- 2.Be sure to use the original accessories and consumables.
- 3.Please do not switch on the power until the installation is completed to avoid failure.

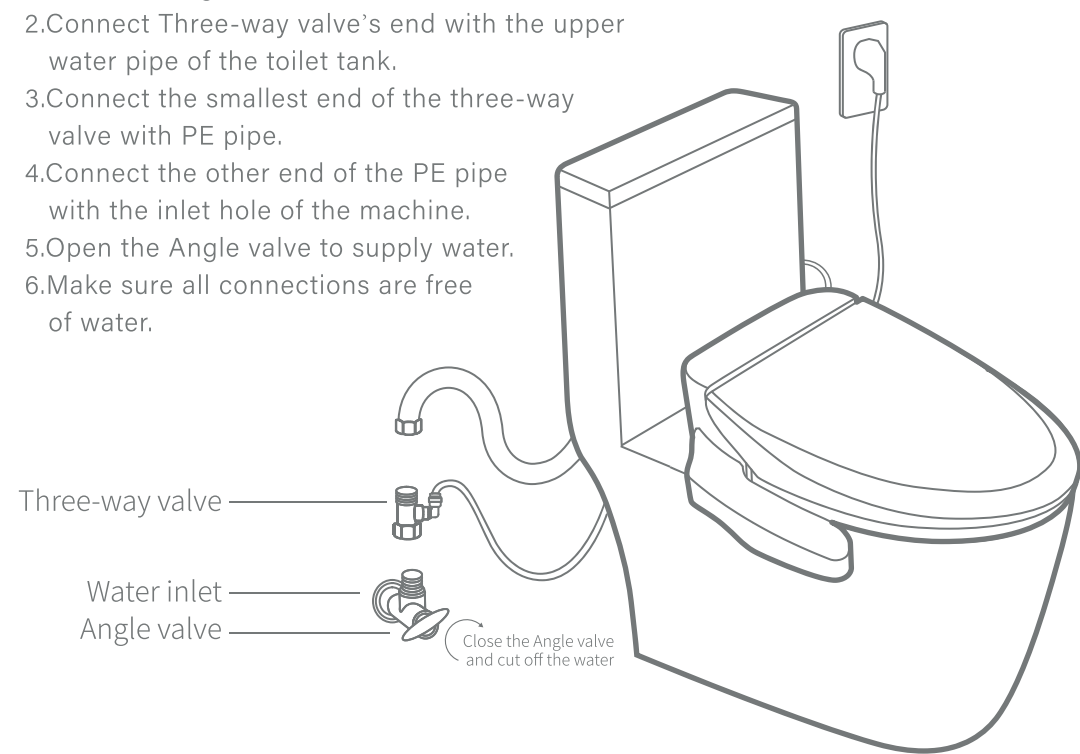
Method of mounting base



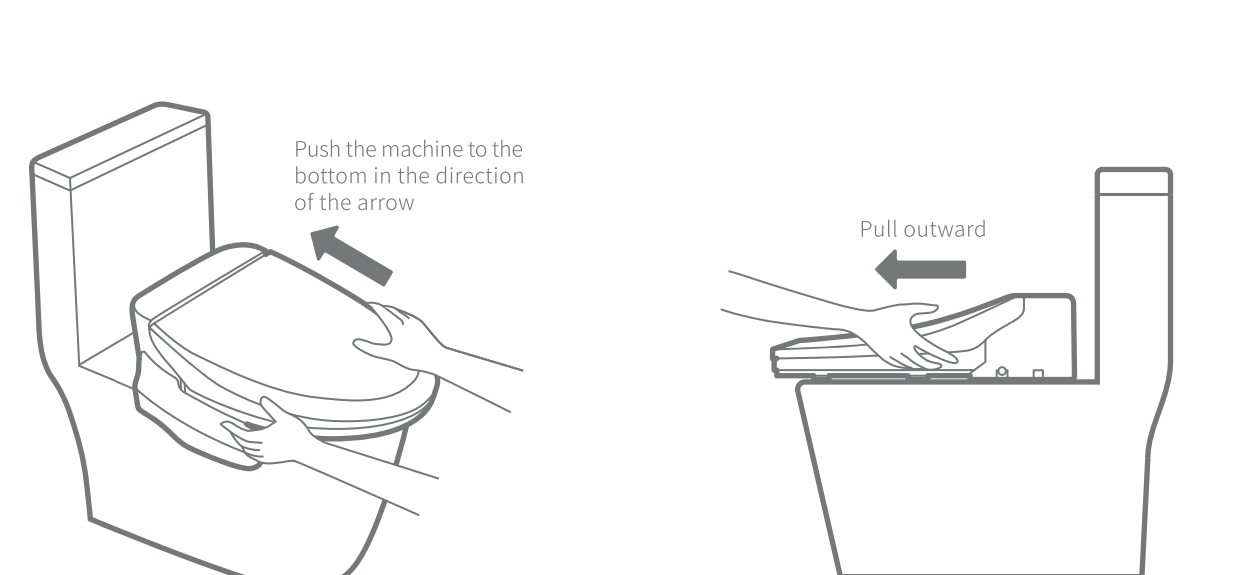
- 1.Draw the mounting base from the machine.
- 2.Install the accessories as shown in the diagram.

Connection of external water pipes

- 1.Close the Angle valve and cut off the water.
- 2.Connect Three-way valve's end with the upper water pipe of the toilet tank.
- 3.Connect the smallest end of the three-way valve with PE pipe.
- 4.Connect the other end of the PE pipe with the inlet hole of the machine.
- 5.Open the Angle valve to supply water.
- 6.Make sure all connections are free of water.



4 Installation and removal



- 1.Push with two hands when install the machine onto the toilet, and make sure the installation is in place.
- 2.Pull outward with two hands when separate the machine from the toilet.

5 Pilot run

Tips : the spraying time will be delayed by 5-10 seconds for the first time using after installation which is normal phenomenon,not a fault.

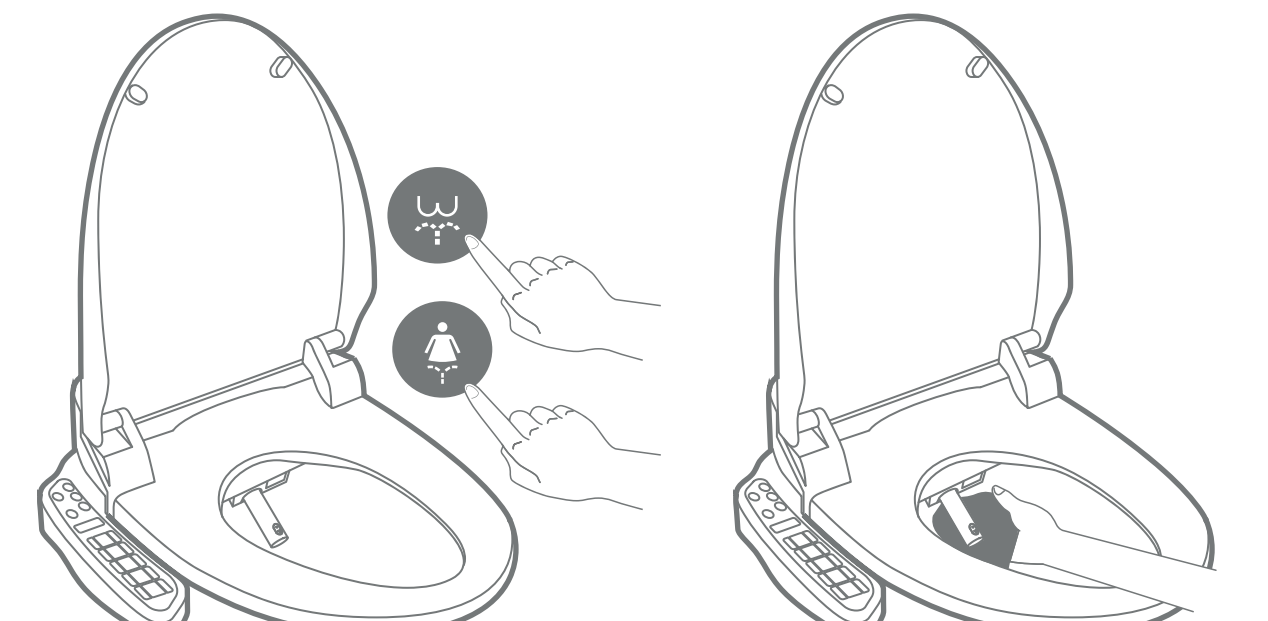
For operation

- 1.Connect the power plug to the socket of 110V/220V voltage.At this time, the floodlight and water temperature light flash.
- 2.Turn on the water source, and the water temperature light flashes. After 30 seconds, the water temperature light stops flashing and stays on, indicating that the machine has completed the self-test.

Function confirm

- 1.Confirm the functions accrodio to the instructions.

6 Cleaning method

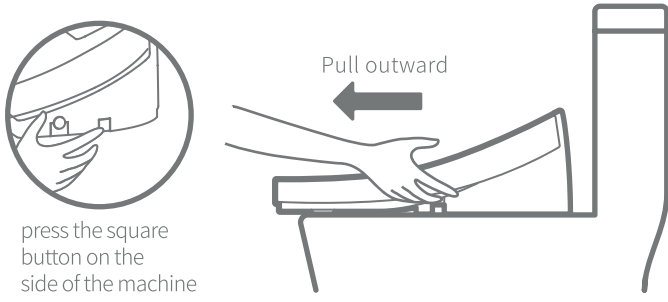


- 1.When no one is seating on the seat, press BIDE/CLEANING button, spray rod stretches, wash the nozzle.
- 2.Clean with toothbrush or soft cloth.After cleaning, press the STOP button to return the spray rod.

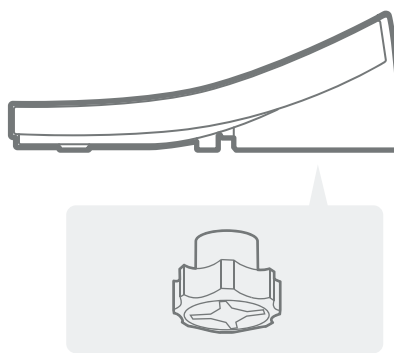
7 Maintenance

A drainage when not in use for a long time

- 1.Please unplug the power supply
- 2.Turn off the water supply
- 3.Pull the machine outward from the toilet



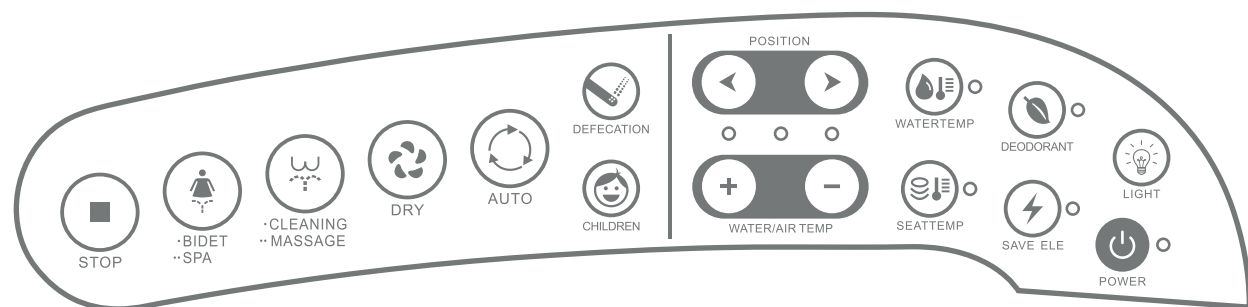
- 4.Screw out the WATER SCREW(the positon indicated on the diagram) to drain the water
- 5.Tighten the WATER SCREW and replace the machine



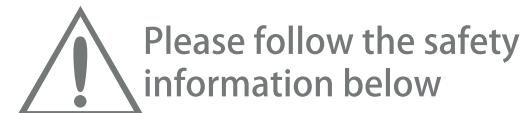
External body cleaning method

- 1.Main surface should be wiped with sponge or soft dishcloth or the dishcloth with sticky neutral detergent.
- 2.Note: do not use diluent, light gasoline, detergent or chemical to wipe, do not use pesticides, aromatic agents, deodorant,etc.

A201



9 Maintenance



Please use the new pipe attached in the product

It away from wet place and avoid being showered

Self-disassembly or Self-repair are forbidden

Make sure the voltage is appropriate

Leaving water or detergent on the product or plug is forbidden, in case of accident or breakdown

Please use the plug-in whose load is over 1400W

In case of accident, do not touch the plug with wet hands

If the power line is damaged, please inform the manufacturer to renew it

Ensure the water is pure and clean

! WARNING

- 1.Don't use the lacquer thinner,gasoline,medicine,medicine,detergent or pesticide to clean this product.
- 2.Don't put any aromatic or medicine in water tank.
- 3.When sitting on this smart toilet for a long period of time,please regulate the seat temperature to the lower grade.
- 4.In case the product is electrified,but no water was supplied to it,don't place it upside down, otherwise it may result in troubles of heating pipe.
- 5.When the product is used by persons(including children)with body,sensory,mental deficiency, or lack of common sense,please pay your attention and prevent them from low temperature burning.
- 6.It's strictly prohibited to step on the cover plate,seat ring,or operation panel,it's not very suitable for children to use it.
- 7.Cables and sockets used in the house must meet the requirements of national standards, all lines must be grounded reliably.It's strictly prohibited to use the patch board with two-hole or insufficient power to work as the extension line.



This product is prohibited in the high temperature or place in storage and use of flammable and explosive.

10 Self-trouble-removal \ Technical parameter

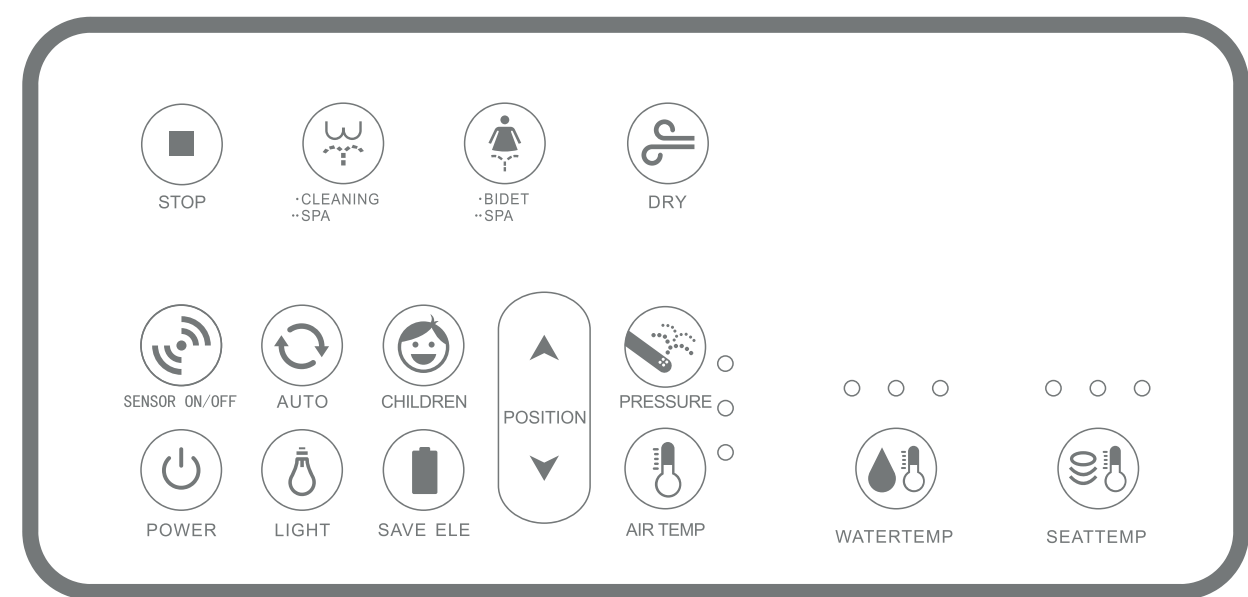
Troubles	Inspect ways	Solutions
Not activated	Make sure the power plug has been inserted into the socket	Insert the power plug into the socket
		Pull out the power plug from the socket and insert it again
No water or a little	Make sure the water supply is normal and the water gauge is open	Ensure the water supply
		If the nozzle is blocked Clean the nozzle by toothbrush
Leakage of water	Inspect all the joint of pipes	Buck up all the joint of pipes
Cold water or cold seat	Check the states of product	Adjust the temp. of water and seat to higher levels

Specifications		AC 220V 50Hz 1500W
Water supply	Way	Connect to water pipe
	Water pressure	0.05-0.75Mpa
Cleaning	Water amount of feminine wash	0.7L/min
	Water amount of feminine wash	0.85L/min
	Temp. of water	3 levels(LOW-MEDIUM-HIGH)
	Heating power	1500W
Heater	Safety protection	TDS/water temperature sensor/WAT
	Temp. of seat	3 levels(LOW-MEDIUM-HIGH)
	Heating power	50W
	Safety protection	TDS/water temperature sensor/thermal cutoff
Warm air dry	Temp. of air	3 levels(LOW-MEDIUM-HIGH)
	Heating power	220W
	Safety protection	TDS/thermal cutoff
	Other safety protection	Leakage protective plug
Length of wire	1.5m	
Product class	Handrail operation	
Dimension	510*460*140mm/510*460*140mm	
Weight	5.9kg	

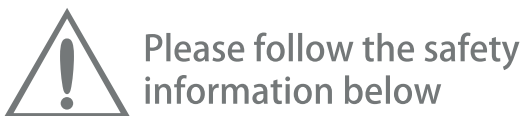
8 Function introduction



A201S



9 Maintenance



Please use the new pipe attached in the product

It away from wet place and avoid being showered

Self-disassembly or Self-repair are forbidden

Make sure the voltage is appropriate

Leaving water or detergent on the product or plug is forbidden, in case of accident or breakdown

Please use the plug-in whose load is over 1400W

In case of accident, do not touch the plug with wet hands

If the power line is damaged, please inform the manufacturer to renew it

Ensure the water is pure and clean

! WARNING

- 1.Don't use the lacquer thinner,gasoline,medicine,medicine,detergent or pesticide to clean this product.
- 2.Don't put any aromatic or medicine in water tank.
- 3.When sitting on this smart toilet for a long period of time,please regulate the seat temperature to the lower grade.
- 4.In case the product is electrified,but no water was supplied to it,don't place it upside down, otherwise it may result in troubles of heating pipe.
- 5.When the product is used by persons(including children)with body,sensory,mental deficiency, or lack of common sense,please pay your attention and prevent them from low temperature burning.
- 6.It's strictly prohibited to step on the cover plate,seat ring,or operation panel,it's not very suitable for children to use it.
- 7.Cables and sockets used in the house must meet the requirements of national standards, all lines must be grounded reliably.It's strictly prohibited to use the patch board with two-hole or insufficient power to work as the extension line.



This product is prohibited in the high temperature or place in storage and use of flammable and explosive.

10 Self-trouble-removal \ Technical parameter

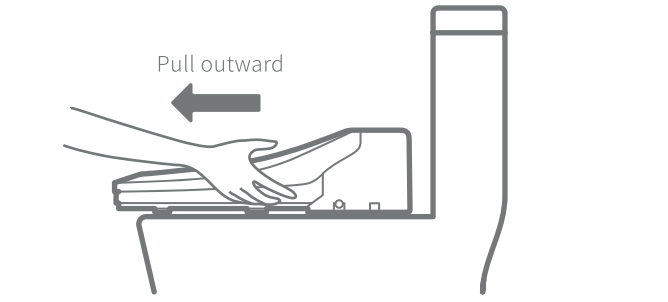
Troubles	Inspect ways	Solutions
Not activated	Make sure the power plug has been inserted into the socket	Insert the power plug into the socket
		Pull out the power plug from the socket and insert it again
No water or a little	Make sure the water supply is normal and the water gauge is open	Ensure the water supply
		If the nozzle is blocked Clean the nozzle by toothbrush
Leakage of water	Inspect all the joint of pipes	Buck up all the joint of pipes
Cold water or cold seat	Check the states of product	Adjust the temp. of water and seat to higher levels

Specifications		AC 220V 50Hz 1300W
Water supply	Way	Connect to water pipe
	Water pressure	0.05-0.75Mpa
Cleaning	Water amount of feminine wash	0.7L/min
	Water amount of feminine wash	0.85L/min
	Temp. of water	3 levels(LOW-MEDIUM-HIGH)
	Heating power	1300W
Heater	Safety protection	TDS/water temperature sensor/WAT
	Temp. of seat	3 levels(LOW-MEDIUM-HIGH)
	Heating power	50W
	Safety protection	TDS/water temperature sensor/thermal cutoff
Warm air dry	Temp. of air	3 levels(LOW-MEDIUM-HIGH)
	Heating power	220W
	Safety protection	TDS/thermal cutoff
	Other safety protection	Leakage protective plug
Length of wire	1.5m	
Product class	Handrail operation	
Dimension	510*460*140mm/510*460*140mm	
Weight	5.9kg	

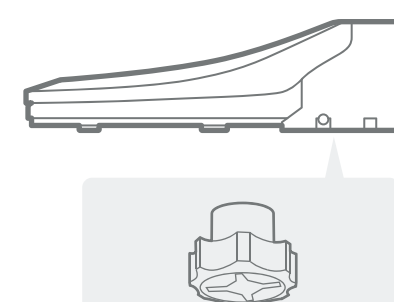
7 Maintenance

A drainage when not in use for a long time

- 1.Please unplug the power supply
- 2.Turn off the water supply
- 3.Pull the machine outward from the toilet



- 4.Screw out the WATER SCREW(the positon indicated on the diagram) to drain the water
- 5.Tighten the WATER SCREW and replace the machine

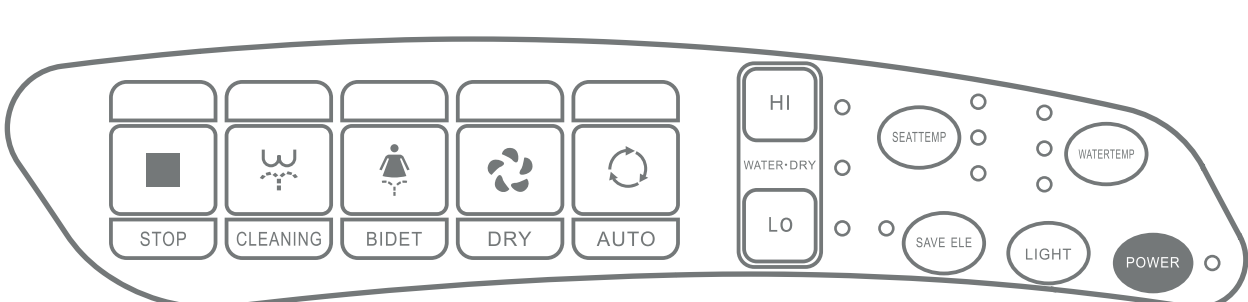


External body cleaning method

- 1.Main surface should be wiped with sponge or soft dishcloth or the dishcloth with sticky neutral detergent.
- 2.Note: do not use diluent, light gasoline, detergent or chemical to wipe, do not use pesticides, aromatic agents, deodorant,etc.

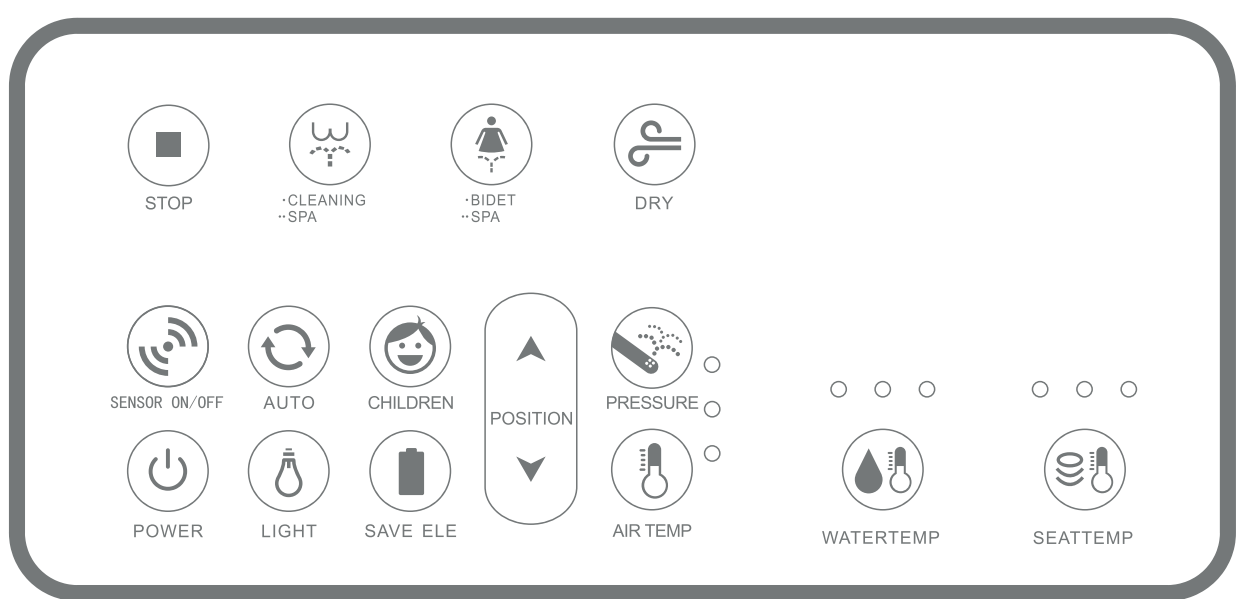
A102

A105



A102S

A105S



SMART TOILET SEAT

USER'S MANUAL

Please read this instruction carefully before using

Model A102 / A102S / A105 / A105S

This device complies with part 15 of the FCC Rules. Operation is subject to the following two conditions: (1) This device may not cause harmful interference, and (2) this device must accept any interference received, including interference that may cause undesired operation.

Any Changes or modifications not expressly approved by the party responsible for compliance could void the user's authority to operate the equipment.

Note: This equipment has been tested and found to comply with the limits for a Class B digital device, pursuant to part 15 of the FCC Rules. These limits are designed to provide reasonable protection against harmful interference in a residential installation. This equipment generates uses and can radiate radio frequency energy and, if not installed and used in accordance with the instructions, may cause harmful interference to radio communications. However, there is no guarantee that interference will not occur in a particular installation. If this equipment does cause harmful interference to radio or television reception, which can be determined by turning the equipment off and on, the user is encouraged to try to correct the interference by one or more of the following measures:

- Reorient or relocate the receiving antenna.
- Increase the separation between the equipment and receiver.
- Connect the equipment into an outlet on a circuit different from that to which the receiver is connected.
- Consult the dealer or an experienced radio/TV technician for help.