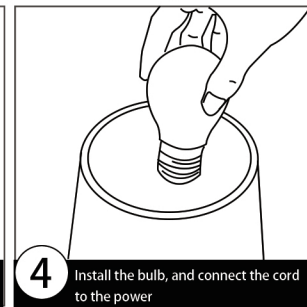
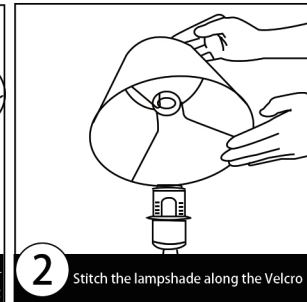
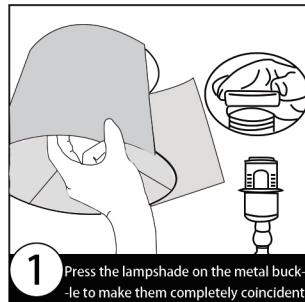


User Manual

Crystal USB bedside lamp illuminates your bedroom, living room, office or anywhere you want.

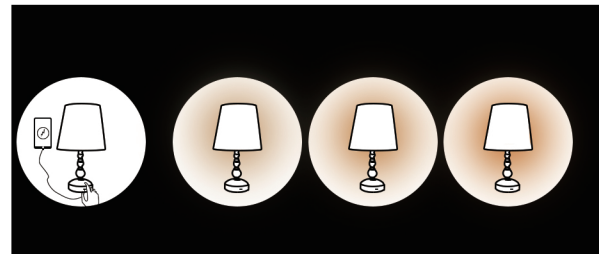
How to install this table lamp?



Minimalist home design: These touch-controlled dimmable table lamps are small in size and are perfect for decorating any place in your home. It is an ideal USB table lamp for living room, bedroom, study room, children's room, etc. It adds a warm and comfortable atmosphere to your bedroom or living room.

Comfortable lighting: Our table lamps give people a nice and comfortable feeling when spending time with family at home, because the linen lampshade makes the light soft and protects your eyes.

3-way smooth dimmable touch control: The dimmable bedside lamp offers 3 level brightness options (Low, Medium, High). Just slightly move your finger to tap the lamp base to control the light. You could adjust the brightness of the light according to your need.



FCC WARNING

This device complies with part 15 of the FCC Rules. Operation is subject to the following two conditions: (1) this device may not cause harmful interference, and (2) this device must accept any interference received, including interference that may cause undesired operation.

Any changes or modifications not expressly approved by the party responsible for compliance could void the user's authority to operate the equipment.

NOTE: This equipment has been tested and found to comply with the limits for a Class B digital device, pursuant to Part 15 of the FCC Rules. These limits are designed to provide reasonable protection against harmful interference in a residential installation. This equipment generates, uses and can radiate radio frequency energy and, if not installed and used in accordance with the instructions, may cause harmful interference to radio communications. However, there is no guarantee that interference will not occur in a particular installation.

If this equipment does cause harmful interference to radio or television reception, which can be determined by turning the equipment off and on, the user is encouraged to try to correct the interference by one or more of the following measures:

- Reorient or relocate the receiving antenna.
- Increase the separation between the equipment and receiver.
- Connect the equipment into an outlet on a circuit different from that to which the receiver is connected.
- Consult the dealer or an experienced radio/TV technician for help.

To maintain compliance with FCC's RF Exposure guidelines, This equipment should be installed and operated with minimum distance between 20cm the radiator your body: Use only the supplied antenna.