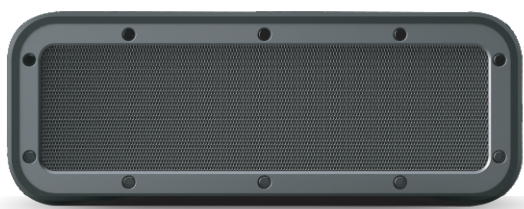


V8 PRO

50W High Power Subwoofer

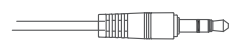


made in China

Parameter

Model	V8 PRO	F. R	80Hz~18KHz
BT version	4.2	Distortion	≤1%
BT range	≥18M (Open field)	Speaker unit	Φ 52MM
Speaker power	50W	Play time	≥8H
Battery	7.4V/ 6000mAh	Charging time	≤3.5H
Input power	Type-C 5V/2.1A	Product Size	215*62*80MM

Accessories

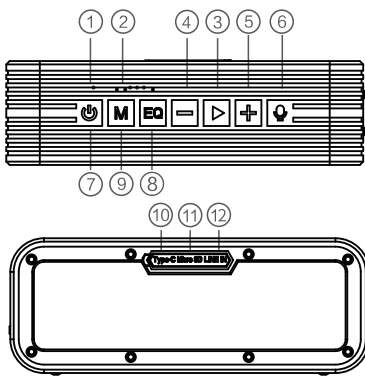


AUX cable



Type-C cable

Key Function



- ① Status Indicator
- ② Sound effect indicator
- ③ Play / Pause / Answer / Hang up
- ④ Volume down / Previous track
- ⑤ Volume up / Next track
- ⑥ Phone assistant wake up
- ⑦ Power on / off
- ⑧ Sound effect switching
- ⑨ Mode switch/Wipe data
- ⑩ Type-C charging / Audio port
- ⑪ TF card
- ⑫ AUX in

BUTTON	OPERATING	FUNCTION DESCRIPTION
	Short press	1. In the off state, short press to turn on 2. In the on state, short press to turn off
	Double click	In the state of Bluetooth to be connected, double-click to enter TWS pairing mode
	Short press	Play mode switching: Bluetooth, AUX / Type-C cable, TF card
	Short press	1. Music playback status: play, pause function 2. Call status: short press to connect 3. When the call is answered, short press to hang up 4. When the phone's Bluetooth is connected: Double-click quickly to call back the last call made by the phone
	Long press	1. Bluetooth connection status: long press for 2s to disconnect 2. When there is an incoming call: long press for 2s to reject

FCC Statement

This device complies with part 15 of the FCC rules. Operation is subject to the following two conditions: (1) this device may not cause harmful interference, and (2) this device must accept any interference received, including interference that may cause undesired operation.

Changes or modifications not expressly approved by the party responsible for compliance could void the user's authority to operate the equipment.

NOTE: This equipment has been tested and found to comply with the limits for a Class B digital device, pursuant to part 15 of the FCC Rules. These limits are designed to provide reasonable protection against harmful interference in a residential installation. This equipment generates uses and can radiate radio frequency energy and, if not installed and used in accordance with the instructions, may cause harmful interference to radio communications. However, there is no guarantee that interference will not occur in a particular installation. If this equipment does cause harmful interference to radio or television reception, which can be determined by turning the equipment off and on, the user is encouraged to try to correct the interference by one or more of the following measures:

- Reorient or relocate the receiving antenna.
- Increase the separation between the equipment and receiver.
- Connect the equipment into an outlet on a circuit different from that to which the receiver is connected.
- Consult the dealer or an experienced radio/TV technician for help.

The device has been evaluated to meet general RF exposure requirement. The device can be used in portable exposure condition without restriction.

	Short press	short press to change the mode to EQ, full range, subwoofer and 3D sound
	Short press	Volume down, total 16 levels
	Long press	Previous track
	Short press	Volume up, total 16 levels
	Long press	Next track
	Short press	Bluetooth connection status: short press to wake up phone voice assistant

LED indicator

① Status indicator (Above the "M" key)

a. The blue light flashes quickly when Bluetooth is ready to pair; The blue light is always on when Bluetooth is connected

b. When the AUX / TF card is playing, the blue light flashes slowly; When the Type-C cable is playing, the red and purple lights flash alternately

② Sound effect indicator (Above the "EQ" key)

a. Short Press to switch sound effects;

b. Light off: full range sound
White light: subwoofer sound
Green light: 3D sound

TF /Cable playback

1. Bluetooth speaker supports reading up to 64GB TF card Supports music format: APE / FLAC / WAV / MP3
2. Insert the TF card into the card slot and automatically play the audio file after recognition
3. AUX, Type-C cable can be inserted into the device to play; if it is connected with Bluetooth, please press the "M" key to switch to the audio cable playback mode

TWS pairing

1. Power on the two speakers (if a Bluetooth device is connected, you must first disconnect the Bluetooth connection)
2. Double-click one of the "M" keys to enter TWS pairing mode
3. After the TWS is successfully paired, there will be a beep. At this time, the yellow indicators of the two speakers are on
4. Turn on the Bluetooth function of the mobile phone or other Bluetooth device, find and connect the Bluetooth named "V8PRO"
5. TWS paired successfully, the machine will automatically perform TWS pairing each time after turning on the machine, no need to repeat the operation
6. If the machine has been paired with TWS, please press and hold the 5s "M" key to reset; After the reset is successful, restart the machine, and then refer to 1 - 4 above to complete the TWS pairing
7. In TWS mode, only the main speaker has hands-free function, and the sub speaker is silent during a call
8. In TWS mode, you can still switch sound effects

Warranty card

Dear customer, thank you for purchasing our products
In order to serve you better, please keep this warranty card in a safe place

Maintenance records	Date	Malfunctions and causes
Product		
Model		
Your name		
Your phone		
Purchase date		
Your address		