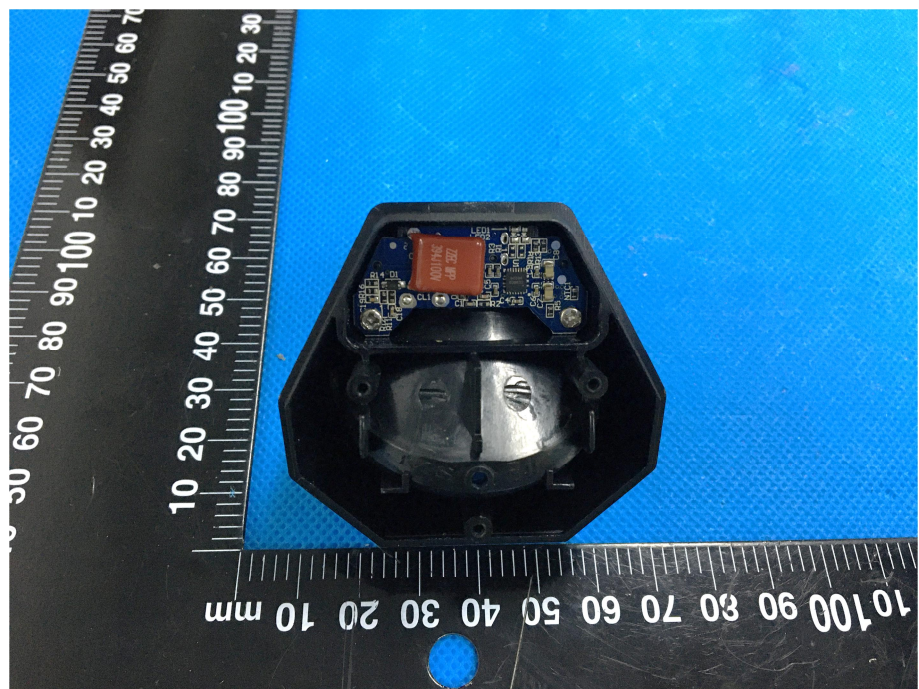


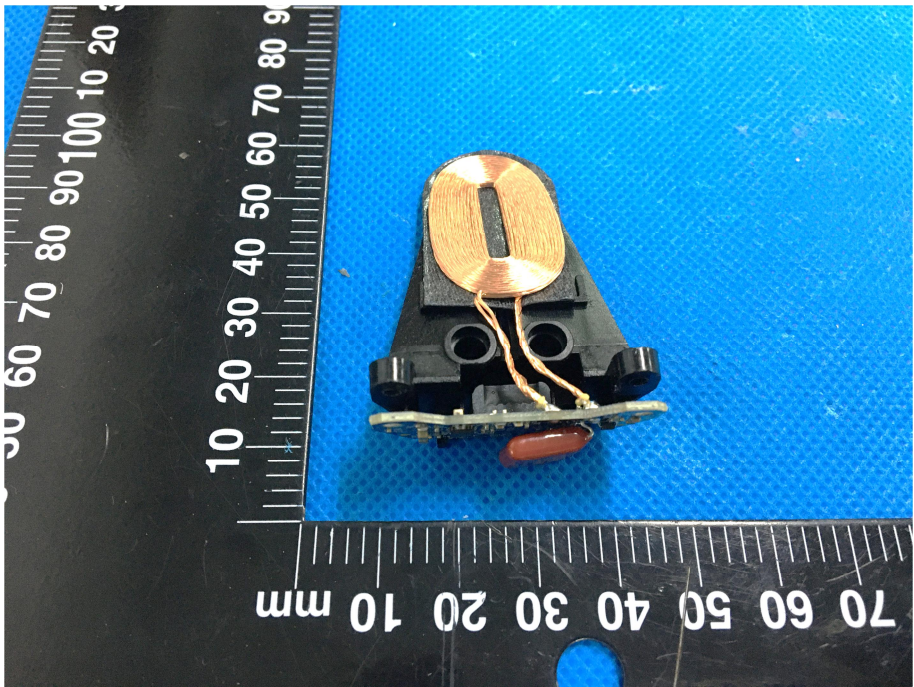
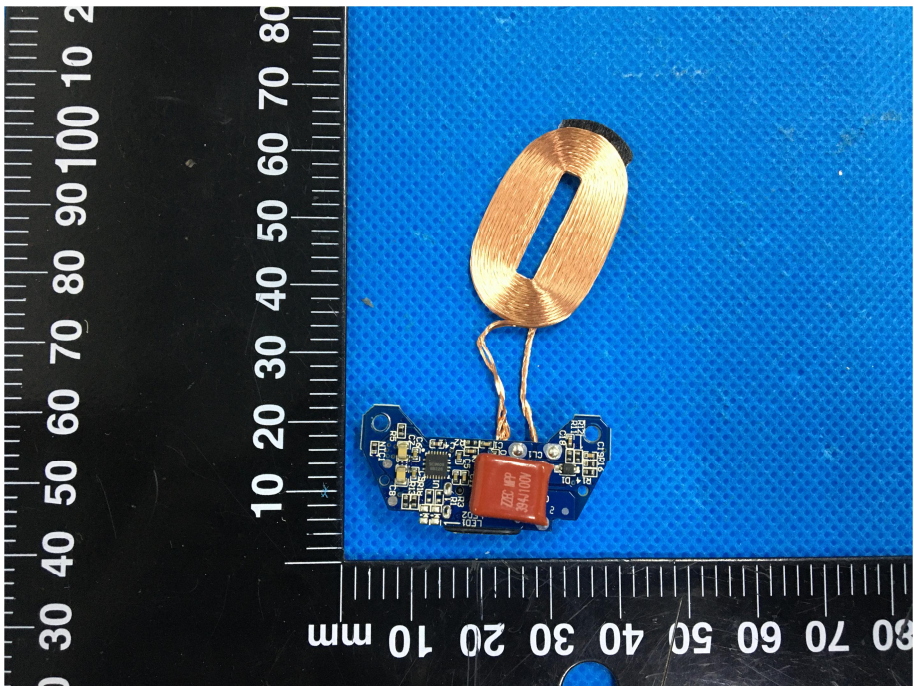
EXHIBIT 3 - EUT INTERNAL PHOTOGRAPHS

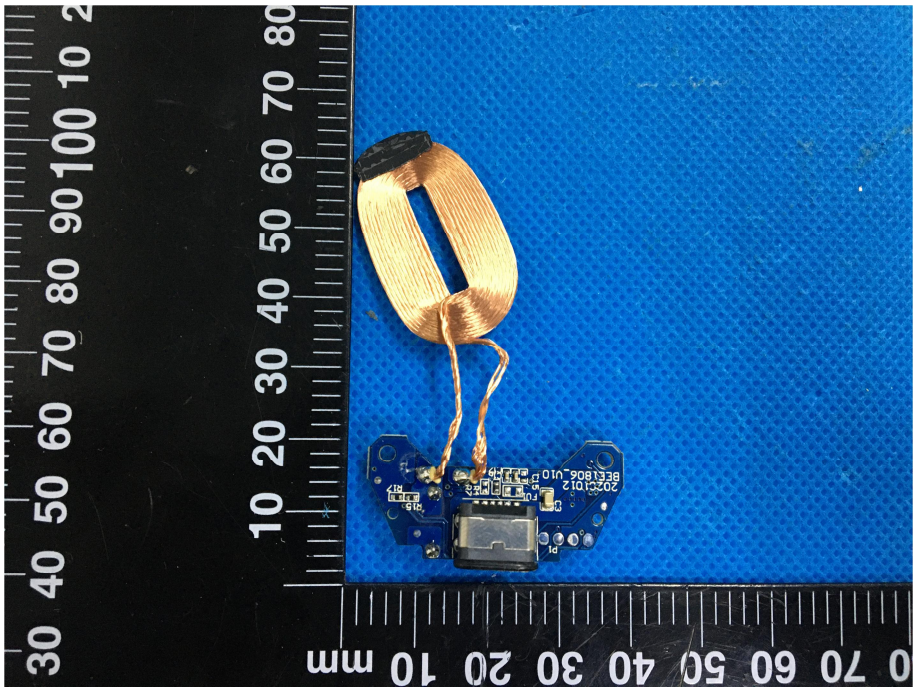
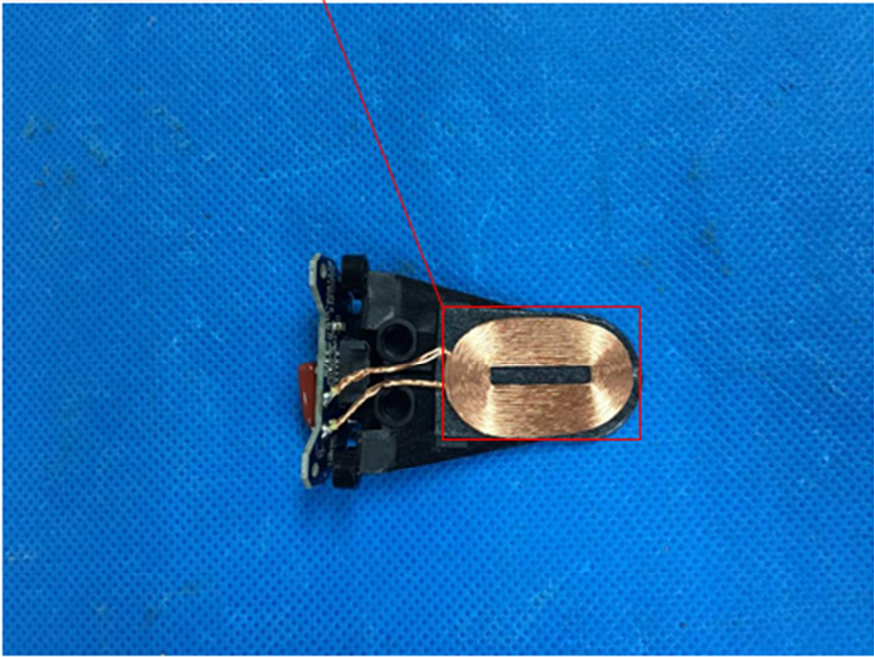
**EUT Housing and Board
View 1**



**EUT Housing and Board
View 2**



<p>EUT Housing and Board View 3</p>	
<p>Solder Board-Component View 1</p>	

<p>Solder Board-Component View 2</p>	 A photograph showing a small electronic component, likely a microcontroller or sensor, soldered onto a printed circuit board (PCB). The component is connected to a coiled copper wire antenna. A black ruler with white markings is placed horizontally and vertically next to the component for scale. The background is a blue textured surface.
<p>Antenna View</p>	<p>Coil transmit Antenna</p>  A close-up photograph of the coiled copper wire antenna. A red rectangular box highlights the coil, and a red line points from the text "Coil transmit Antenna" to this box. The antenna is connected to the PCB component. The background is a blue textured surface.