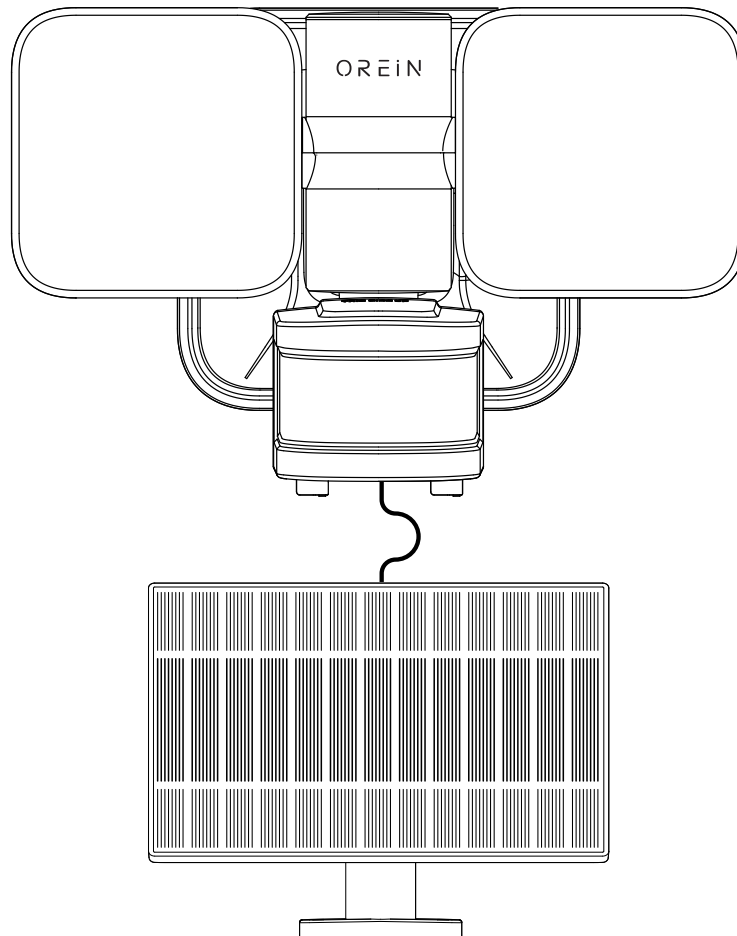


OREiN

USE AND CARE GUIDE

Smart Motion Sensor Floodlight

MODEL: OS36011547



Questions, problems, missing parts?
Contact us before returning.
1-844-506-1530
Support@iorein.com

Thank you for choosing OREiN!

Please read these instructions thoroughly prior to installation, then store in a safe place for future reference.



HOW TO USE

Table of Contents

Table of Contents	1	Operation	3
Safety Information	1	Connect the App	6
Pre-Installation	2	Troubleshooting.....	9
Installation	2		

Safety Information

- Recommended to be installed by a professional electrician.
- Turn off the power before installing the fixture.
- This light fixture requires a 120-Volt AC power source.
- Do not connect this light fixture to a dimmer switch or timer.
- The light fixture should be mounted approximately 8 ft. (2.4 m) above the ground. If the light fixture is mounted higher than recommended, aiming the sensor down will reduce the coverage area.
- Risk of fire. Keep the lamp heads at least 2 in. (51 mm) from combustible materials.
- Burn hazard. Allow the light fixture to cool before touching.

Pre-Installation

Prepare for Installation

Before installing the light fixture, ensure that all parts are present. Compare parts with the Hardware Included and Package Contents sections. If any part is missing or damaged, do not attempt to assemble, install, or operate this light fixture.

SPECIFICATIONS

Sensing Range	Max 50 ft
Sensing Angle	Up to 240°
Wattage	26W
Input	AC 120V 60Hz
Working Modes	Test Mode, Motion Mode, Light Mode, Security Mode

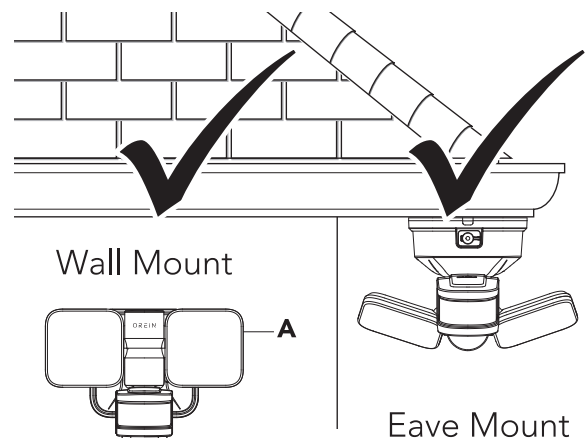
Installation

1. Determine the mounting location



NOTE: The light fixture should be mounted approximately 8 ft. (2.4 m) above the ground. If the light fixture is mounted higher than recommended, aiming the sensor down will reduce the coverage area.

- Determine the mounting location – wall or eave mount.
- Position the light heads (A) in the general direction of the desired light coverage.



2. For installation instructions, please refer to the Quick Start Guide.

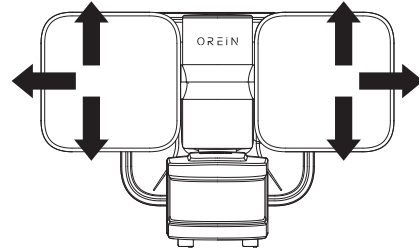
Operation

1 .Adjusting the light heads



WARNING: Risk of fire. Keep the light heads at least 2 in. (51 mm) from combustible materials.

- Turn the power on at the circuit breaker or fuse and turn on the wall switch.
- If needed, gently grasp the light heads (A) and tilt them up or down or side to side to adjust the light coverage area.



2 .Setting the work mode

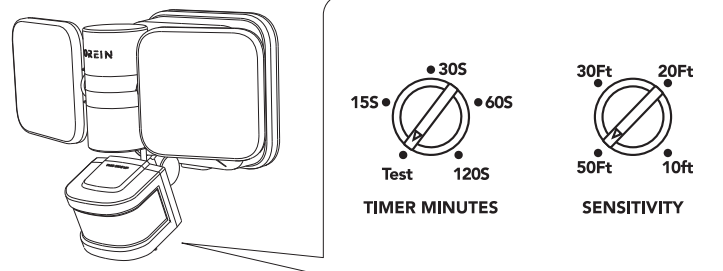
NOTE:



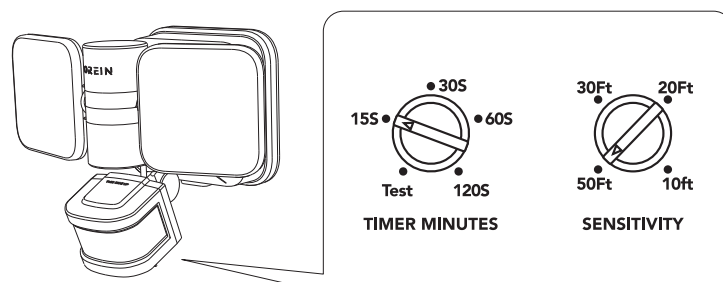
- 1) Turn the knob to the "Test" position, the light will enter the Test mode.
- 2) In this mode, the light will light up during the day and at night for the convenience to test if the light is in good condition before installation.

Test Mode Setting

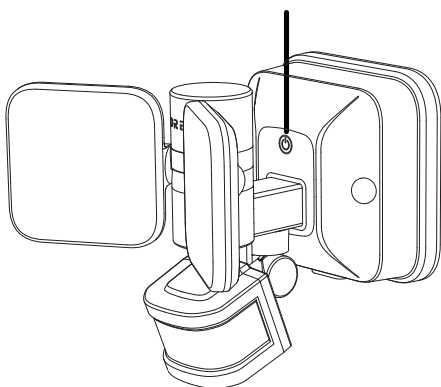
1. Turn the knob to "Test" position to enter the Test mode.
2. Once detecting the motion, the light will turn on for 5 seconds before auto off.



Motion Mode/Light Mode/Security Mode Setting

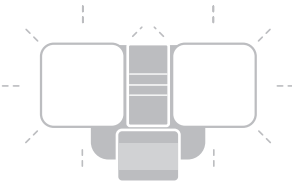
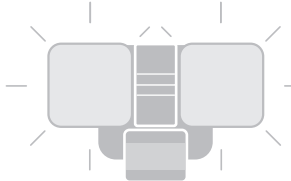



Turn on/off/Modes Button



1. Click the button to turn on the light and press it for 2 seconds to turn off the light.
2. Click the button to switch 3 working modes: Motion Mode, Light Mode, Security Mode after turning on the light.
3. Press and hold for 5 seconds to restore the factory settings.

Single Click the Button to Switch Modes

		
Motion Mode	Light Mode	Security Mode
Fast Flash Twice	Slowly Flash Once	Fast Flash Once
Light will stay on for 15s/30s/60s/120s after PIR detects motion.	Light will auto on in dusk and auto off in dawn.	The light flashes for 2 minutes when the PIR sensor detects motion.

NOTE:



- 1) The sensor doesn't have 20seconds setting, only options for 15,30,60,or120seconds.
- 2) You will get more modes and functions after connecting to the Aidot App.
- 3) The RGB Night Light is off by default but can be turned on in motion mode via the App.

3. Sensor Sensitivity Setting

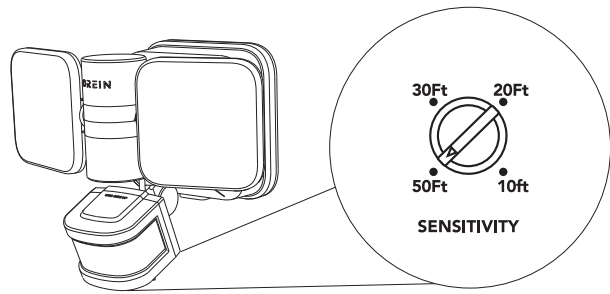
To change the sensitivity of the PIR distance sensing, rotate the "Range" dial the preferred setting:

10Ft: 10 feet, short range

20Ft: 20 feet, average range

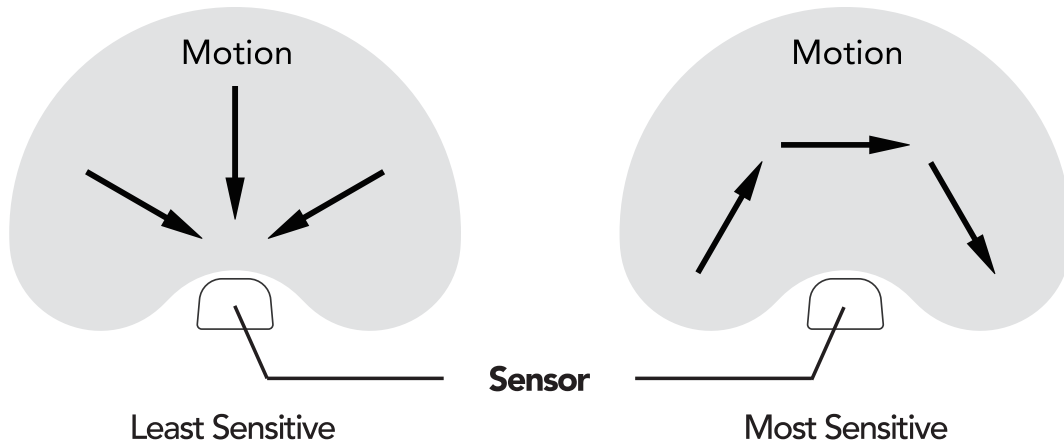
30Ft: 30 feet, long range

50Ft.: Up to 50 feet, extra long range

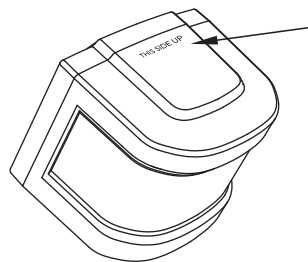


NOTE: The higher the "SENSITIVITY" setting, the greater the possibility of false triggering. To reduce false triggering, please choose the sensitivity you need.

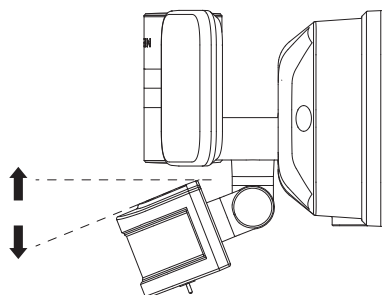
The sensor will be more sensitive to motion across than motion towards it directly.



- To ensure the motion sensor work properly, please keep the marking "**THIS SIDE UP**" on the motion sensor up.

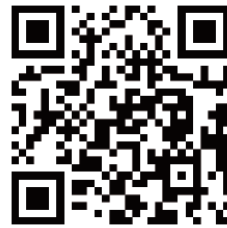


- Please adjust the sensor to a suitable angle that can cover your sensing range.



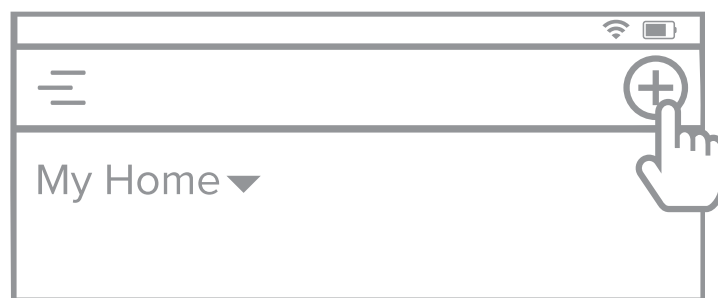
Connect the App

1. Get the AiDot App from App Store or Google Play.

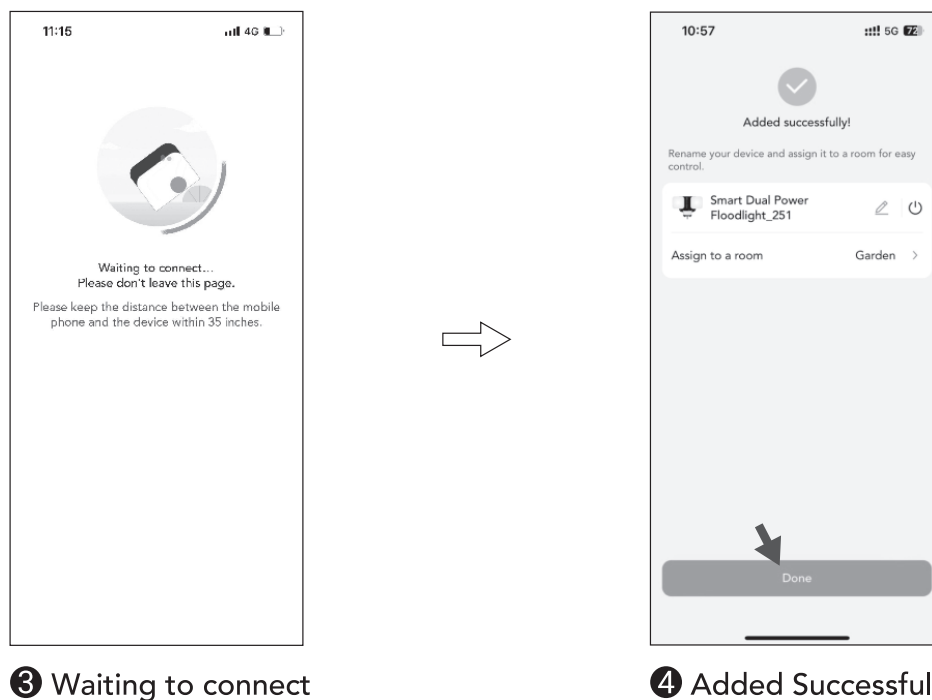
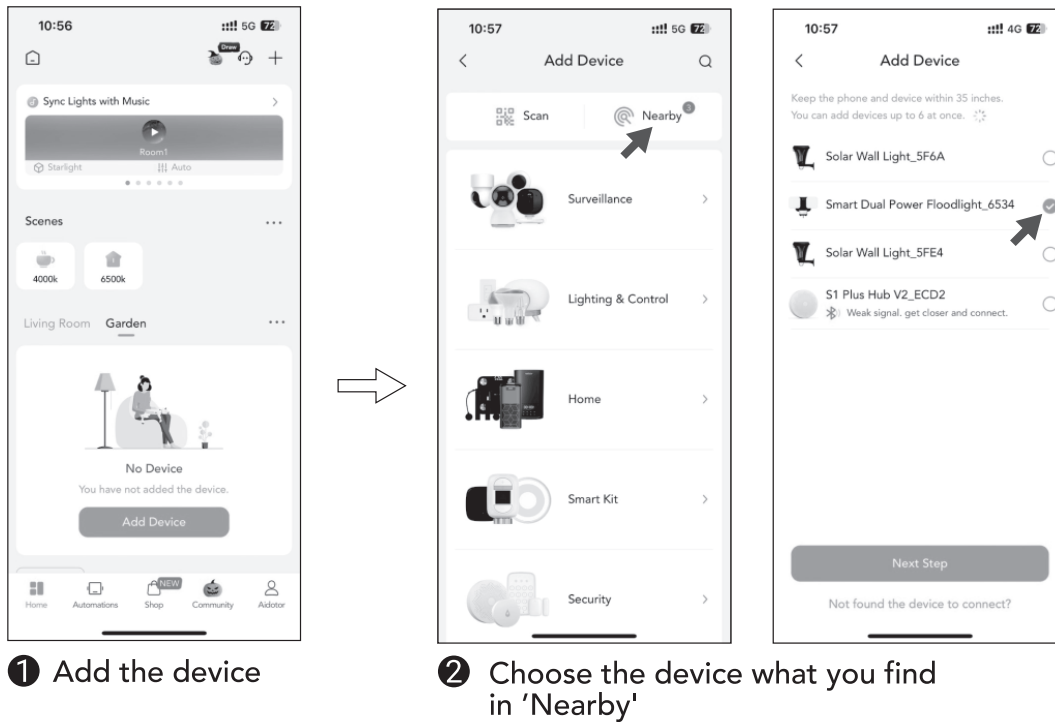


2. Create an account and sign in.

3. Tap the "+" button to add a device.



4. Follow the instructions on App.



NOTE:



- 1) You must open the Bluetooth and Location Services.
- 2) If you still can not find the device in 'Nearby', Try to reset the device: Long press the button for more than 5S to enter flash mode.)

Battery Replacement Instructions

When replacing the batteries, be sure to:

- Use rechargeable batteries only.
- After replacing the batteries, if the solar light does not come on, remove the batteries again or place the light in sunlight to activate it.
- Observe the correct polarity (+ and -) when installing the replacement batteries.
- Do not mix old and new batteries and do not mix alkaline, standard(carbon-zinc) or rechargeable (ni-cad, ni-mh, etc.) batteries.

IMPORTANT: Dispose of the Lithium-ion battery in accordance with local, state and federal regulations.

Care & Maintenance

- From time to time, ensure the plug between the solar panel and light is securely connected. It is advisable to adjust the angle of the solar panel to optimize the exposure of the sun in winter.
- The solar panel should be cleaned by a damp cotton cloth on a regular basis. This will ensure optimal performance and battery charging. Periodically, utilize the same way to clean the lenses of the security light.
- Do not spray the light fixture with a hose or power washer.

Frequently Asked Questions

Q: Where should the solar panel be mounted?

A: Mount your solar panel in a position where the most amount of sunlight to be absorbed. In the Northern Hemisphere this is usually south facing.

Q: Does the solar panel require the direct sun to charge?

A: The solar panel can charge the internal batteries with direct and indirect light. For the best results, please try to optimize your solar panel's sun exposure.

Q: Can additional or extended cable wire for the solar panel be purchased?

A: There are no extensions available for the cable that connects the light to the solar panel. Any malfunction caused by other cable additions will invalidate the warranty.

Q: What type of batteries of this solar motion security light?

A: The batteries type of this solar motion light is 2 pcs 3.7V 18650 2200mAh Lithium-ion rechargeable batteries.

Troubleshooting

Problem	Possible Cause	Solution
The (solar) light	The light switch is turned off.	Turn the light switch on.
	The fuse is blown or the circuit breaker is turned off.	Replace the fuse or turn the circuit breaker on.
	Daylight turn-off (photocell) is in effect.	Recheck after dark.
	The circuit wiring is incorrect (if this is a new installation).	Verify the wiring is correct.
	The motion sensor is aimed in the wrong direction.	Re-aim the motion sensor to cover the desired area.
	Loose DC connector; battery aging.	Check the DC connector for looseness. Replace the battery if it is used for too long.
The light turns on during the day.	The motion sensor may be installed in a relatively dark location.	The light fixture is operating normally under these circumstances.
	The control is in the " Test " position.	Set the control to " 15S/30S/60S/120S ".
The light turns on for no apparent reason.	The motion sensor may be sensing small animals, automobile traffic, or other heat sources.	Reposition the motion sensor.
	The light fixture is wired through a dimmer or timer.	Do not use a dimmer or timer to control the light fixture. Replace the dimmer or timer with a standard on/off wall switch.
	The motion sensor may be picking up a heat source, such as an air vent, dryer vent, or brightly painted, heat-reflective surface.	Reposition the motion sensor.
The lights stay on continuously.	The light fixture is wired through a dimmer or timer.	Do not use a dimmer or timer to control the light fixture. Replace the dimmer or timer with a standard on/off wall switch.
	The light fixture is on the same circuit as a motor, transformer, or fluorescent bulb.	Install the light fixture on a circuit without motors, transformers, or fluorescent bulbs.
	Heat or light from the bulbs may be turning the motion sensor on and off.	Reposition the lamp heads away from the motion sensor.

Problem	Possible Cause	Solution
The lights flash on and off.	Heat is being reflected from other objects and may be turning the motion sensor on and off.	Reposition the motion sensor.
	The motion sensor is in " TEST " mode and warming up.	While in " TEST " mode, the light only stays on for 5 seconds. Set the control to " 15S/30S/60S/120S ".

FCC WARNING

This device complies with part 15 of the FCC Rules. Operation is subject to the following two conditions: (1) this device may not cause harmful interference, and (2) this device must accept any interference received, including interference that may cause undesired operation.

Any changes or modifications not expressly approved by the party responsible for compliance could void the user's authority to operate the equipment.

NOTE: This equipment has been tested and found to comply with the limits for a Class B digital device, pursuant to Part 15 of the FCC Rules. These limits are designed to provide reasonable protection against harmful interference in a residential installation. This equipment generates, uses and can radiate radio frequency energy and, if not installed and used in accordance with the instructions, may cause harmful interference to radio communications.

However, there is no guarantee that interference will not occur in a particular installation. If this equipment does cause harmful interference to radio or television reception, which can be determined by turning the equipment off and on, the user is encouraged to try to correct the interference by one or more of the following measures:

- Reorient or relocate the receiving antenna.
- Increase the separation between the equipment and receiver.
- Connect the equipment into an outlet on a circuit different from that to which the receiver is connected.

-- Consult the dealer or an experienced radio/TV technician for help.

To maintain compliance with FCC' s RF Exposure guidelines, this equipment should be installed and operated with minimum 20cm distance between the radiator and your body: Use only the supplied antenna.

Contact us

SYVIO TECHNOLOGY.CO.,LIMITED

Room A, 8/F,Kwok Cheung Building, 635-637

Shanghai Street, Mong Kok, Hong Kong

Phone: 1-844-506-1530

Website: www.iorein.com

Email: Support@iorein.com

Made in China

Follow us on social media

 Facebook: [@orein.led](https://www.facebook.com/orein.led)

 Youtube: OREiN LED

