

DECLARATION OF SIMILARITY

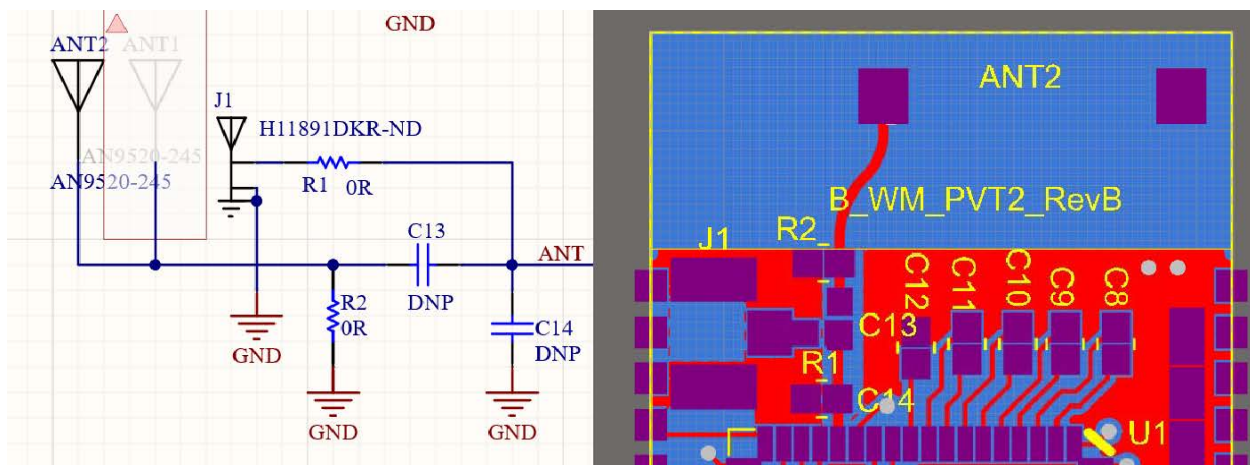
Date: 2021-11-22

FEDERAL COMMUNICATIONS COMMISSION
Authorization and Evaluation Division
7435 Oakland Mills Road
Columbia, MD 21046

Dear Sir or Madam:

We, **Butlr Technologies Inc.**, hereby declare that the product: Butlr Wireless Module, FCC ID:2AZPC-B-WM-01. model: B-WM-01-B,B-WM-01-C is electrically identical with the model: B-WM-01-A which was tested by China Certification ICT Co., Ltd (Dongguan) with the same electromagnetic emissions and electromagnetic compatibility characteristics.

The antenna parts of the wireless models have been designed based on compatibility, below figures are the schematic design and PCB layout.



Descriptions of the differences among the three models that are declared similar are as follows. They are almost the same product and just the different model name and antenna types are different:

1) B-WM-01-B:

External antenna locates outside and connects to the PCBA by using connector. This model removes R2 and C13 components and keeps R1 and J1 components for antenna function,

2) B-WM-01-A and B-WM-01-C:

Their antennas both locate on PCBA and just the different model name means different antenna manufacturer. The two models remove R1 and J1 components and keep R2 and C13 components for antenna function

The rest are the same. The detail information, please check the reports.

Please contact me should there be need for any additional clarification or information.

Best Regards,

Signature:

Printed Name: Jiani Zeng

Title: Chief Product Officer