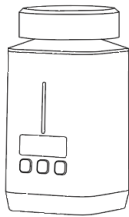


# AI / IoT Smart Pill Bottle

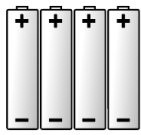
## Instruction



## What is included



Smart Pill Bottle



AAAX4EA

## Information

Product name	AI / IoT Smart Pill Bottle
Model	GPBB
FCC ID	2AZP7-GPBB
Power	AAA 4EA
Bluetooth frequency	2.4GHz
Temperature range	-4°F (-20°C)

## Safety information & Key features

**Safety information**

- ① Please turn on the battery and operate the power when you receive it.
- ② If the alarm doesn't go off when you connect the smart pill bottle, forcefully shut down the application and remove the battery. Please power down and try again.

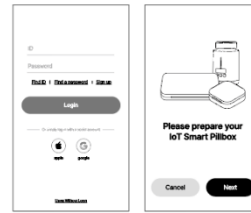
**Key features**

- ① DEFI Smart Pill Bottle helps people to take their medicine on time by their own alarm setting.
- ② The alarm can be set with the application and button, and the last closing time, intake time, etc. It provides a variety of alarms.
- ③ DEFI Smart Pill Bottle needs Bluetooth connection with your smartphone.
- ④ It can be used for up to a year with four AAA batteries.

## Warranty Form

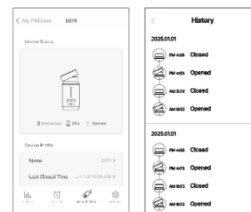
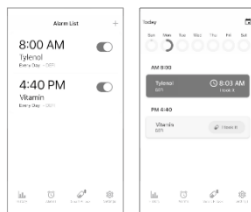
Product name	AI / IoT Smart Pill Bottle
Model	GPBB
Serial number	
Place of purchase	
Purchase date	

## Installing the DEFI app



- ① search and download “DEFI” on Google Play or APP store.

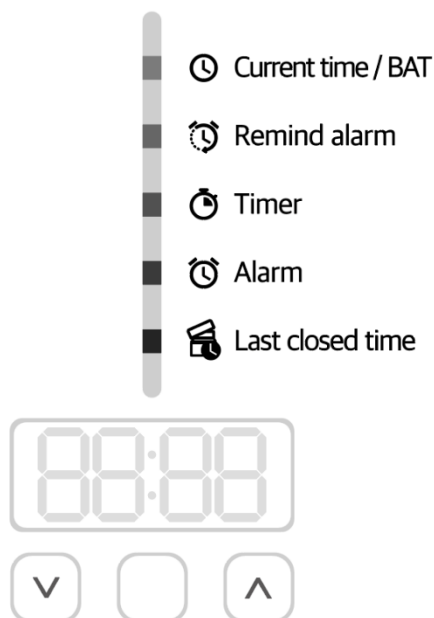
- ② Ensure the your mobile’s Bluetooth is turned on for the app to connect with your DEFI Smart Pill Bottle and create your DEFI account.



- ③ After connecting with your smart pill bottle, set an alarm.

- ④ Whether the last time of accounting is displayed well, Check if the alarm goes off well and works and use it.

## 5 states displayed on the display



1. Last closed time : Last time opened (2 modes)

2. Alarm : Alarm at a fixed time (up to one registration immediately to the device, Up to 9 registrations on the app)

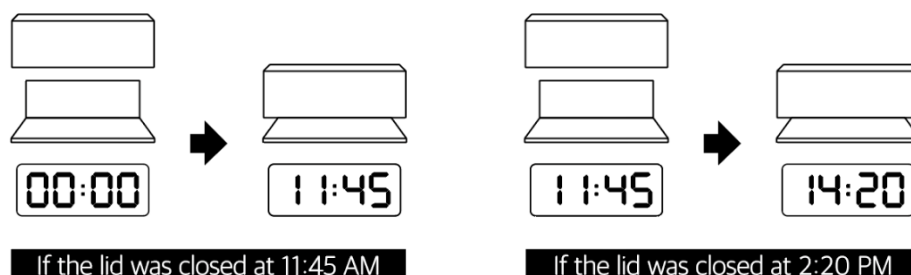
3. Timer : Time Countdown

4. Remind alarm :  
ex) 20:00 alarm, 8 p.m. If there is no opening/closing record, the alarm sounds (Reset at 24:00 on a daily basis)

5. Current time / BAT

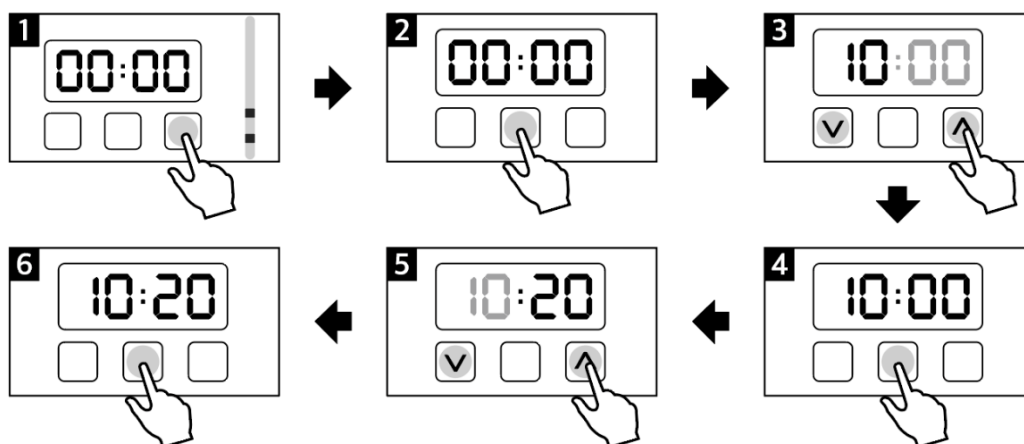
## 1. Last closed time

1) Last closed time / 2) Elapsed time since medication



- ① The lid's opening and closing are detected through a hall sensor, and the last closed time is displayed.  
For example, if the lid is closed at 11:45 AM, it will be displayed as 11:45.  
If the lid is closed at 2:20 PM, it will be displayed as 14:20.
- ② Press the center button once more to check the elapsed time since the medication was taken.

## 2. How to Set the Alarm



- ① Press the right button once to enter alarm mode.
- ② Press and hold the center button for 3 seconds to start the alarm setting mode.  
(If there is an existing alarm, it will be deleted and you can set it again.)
- ③ Use the right or left button to set the time, and press the center button to save once the setting is complete.
- ④ Set the minutes in the same way as the time, and press the center button to save once the setting is complete.
- ⑤ When the alarm goes off, the LED will blink, providing a visual notification.

### 3. Timer

When the timer is set, it displays the elapsed time since medication in a countdown format. (The timer can be set for up to 99 hours and 99 minutes, and an alarm will sound when the set time is reached.)

- ① Press the right button twice to enter the timer setting mode.
- ② The timer setting method is the same as the alarm setting method described in [2. Alarm]
- ③ When 60 seconds (1 minute) remain on the timer, the LED will turn on.

### 4. Remind alarm

If there is no medication record (lid opening/closing) at the set time, a reminder alarm will sound. (This alarm is automatically reset at 24:00 every day.)

ex) For example, if the reminder alarm is set for 8:00 PM and there is no record of opening or closing the bottle throughout the day, the alarm will sound at 8:00 PM.

- ① Press the right button three times to enter the reminder alarm setting mode.
- ② The timer setting method is the same as the alarm setting method described in [2. Alarm].

### 5. Current time / BAT

It displays the current time when synced with the app.

- ① Press the right button four times to enter the current time mode.
- ② In the current time mode, press the center button once more to check the battery voltage. (It will be displayed as a percentage in the segment.)

### ※Note※

<b>Battery Warning</b>	① The battery must be inserted immediately upon receipt.
	② If the alarm does not sound, close the app, reinsert the battery, and try again.
<b>Syncing Troubleshooting</b>	① When syncing the app with the device, existing data may be deleted.
	② Please note that the values set after syncing will be applied.
<b>Medication Bottle Reset</b>	① If you remove one battery and then insert it back while pressing the center button, the device will be reset.
	② If you remove and reinsert the battery, the actual time will only sync <u>when the app is connected.</u>
	If not synced, the current time displayed on the pill bottle may differ from the actual time, and the last medication time (open/close time) may also be incorrect.

## FCC Information to User

This equipment has been tested and found to comply with the limits for a Class B digital device, pursuant to part 15 of the FCC Rules. These limits are designed to provide reasonable protection against harmful interference in a residential installation.

This equipment generates, uses and can radiate radio frequency energy and, if not installed and used in accordance with the instructions, may cause harmful interference to radio communications. However, there is no guarantee that interference will not occur in a particular installation. If this equipment does cause harmful interference to radio or television reception, which can be determined by turning the equipment off and on, the user is encouraged to try to correct the interference by one or more of the following measures:

- Reorient or relocate the receiving antenna.
- Increase the separation between the equipment and receiver.
- **Connect the equipment into an outlet on a circuit different from that to which the receiver is connected.**
- Consult the dealer or an experienced radio/TV technician for help.

### Caution:

THE GRANTEE IS NOT RESPONSIBLE FOR ANY CHANGES OR MODIFICATIONS NOT EXPRESSLY APPROVED BY THE PARTY RESPONSIBLE FOR COMPLIANCE. SUCH MODIFICATIONS COULD VOID THE USER'S AUTHORITY TO OPERATE THE EQUIPMENT.

**This device complies with part 15 of the FCC Rules. Operation is subject to the following two conditions:**

- (1) this device may not cause harmful interference, and
- (2) this device must accept any interference, including interference that may cause undesired operation of the device.

The user manual for an intentional or unintentional radiator shall caution the user that changes or modifications not expressly approved by the party responsible for compliance could void the user's authority to operate the equipment.

### RF Radiation Exposure Statement:

This equipment complies with FCC radiation exposure limits set forth for an uncontrolled environment and meets the FCC radio frequency (RF) Exposure Guidelines as this equipment has very low levels of RF energy.

This transmitter must not be co-located or operating in conjunction with any other antenna or transmitter.



Instagram: [defi\\_smart\\_official](#) | Website: [www.donteverforgetit.com](http://www.donteverforgetit.com)