

Templus Smart Thermometer

-TS01-

User Manual

INDICATIONS FOR USE

This Templus Smart Thermometer is a high quality product incorporating the latest technology. With its unique technology, this device can provide a stable, heat-interference-free reading with each measurement. The Templus Smart Thermometer connects with the «SELFCare365» App to continuously and accurately track your temperature. This product is a non-invasive and reusable electronic device for home use and a non-invasive and single patient use in the hospital. This product is intended for non-urgent ambulatory continuous body temperature monitoring from ages 6 years and older. Be sure to keep TS01 away from children, this device must be used by adults.

This Templus smart thermometer is intended for the periodic measurement and monitoring of human body temperature. Please read through these instructions carefully in order for you to understand all functions and safety information.

THE ADVANTAGES OF THIS THERMOMETER

1. The high-precision temperature sensor on TS01 is tightly attached to the metal on the patch. Once the skin touches the metal, and the high-precision temperature sensor senses the temperature through the high conductivity of the metal to the temperature; which ensures the accuracy of body temperature.
2. As a stick to skin applications, TS01 use medical grade double sided adhesive tape which offers hypoallergenic, breathable, conformable and repositionable options, with a gentle or aggressive adhesive for short and long term wear.
3. TS01 solution with cloud database services through Bluetooth® and your mobile device connecting with WI-FI, enable you to access real time temperature data and react on real time alert. This makes monitoring easier for caretaker on patients or family members.

INTENDED USE

Templus Smart Thermometer is an electronic thermometer using a high-precision temperature sensor to continuous detect armpit and/or behind the ear body temperature on people for home and for professional use for healthcare facility. This product is suitable for measuring body temperature from ages 6 years and order. It is not intended for diagnosis or screening disease, and it is not intended for new born, preterm and underweight newborn infants.

PRECAUTIONS



1. Place the device with the hydrophilic adhesive patch and temperature sensor point directly on the skin and as close as possible to the armpit or behind the ear.
2. The hydrophilic adhesive patch can be reused, but when the adhesive patch is not sufficiently viscous, please replace it with a new one.

3. Taking a temperature should be avoided within 30 minutes of exercising or bathing. In such a situation, the person being measured should rest at normal room temperature for at least five minutes before taking a reading.
4. After eating or taking medication, wait at least 30 minutes before attempting a temperature reading.
5. The Templus smart thermometer should be used indoors, out of direct sunlight, and away from air conditioning or heating ducts, a stable ambience is important for accurate results.
6. This device is a non-diagnostic apparatus and does not replace a physician's examination. Measurements from this device should not be used when considering medical treatment or making related medical decisions.
7. The Hall element on the device depending on the high magnetic magnet on the storage box to turn on/off the power. When the TS01 is placed in the storage box, its power is off. If the device is not using temporarily, please keep the thermometer in the box to extend battery life.
8. Please keep the storage box in a safe place and do not substitute it.
9. The battery life is about 25 days; when the battery power is lower than the normal use power, the APP will display a low battery warning.
10. The battery is a single-use battery and cannot be used repeatedly.

CLEANING AND MAINTENANCE

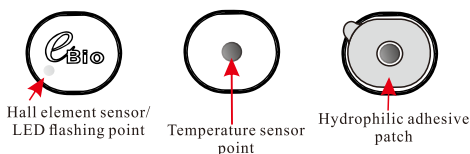
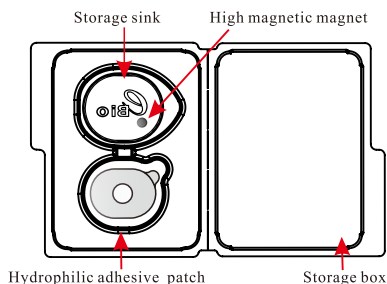
1. This device must not be immersed in water.
2. Use cotton tissue moistened with water or 70% Isopropyl alcohol to clean the thermometer surface and the measuring sensor.
3. Batteries and electronic devices must be disposed of in accordance with the locally applicable regulations, not with domestic waste.



Read the instructions carefully before using this device.

PRODUCT & ACCESSORIES

1. Templus Smart Thermometer x 1 (Model: TS01)
2. CR2032 Battery x 1
3. Storage Box with High Magnetic Magnet
4. Hydrophilic adhesive patch x 10
5. User Manual



- Ebio side with Hall element on the device must touch with a high magnetic magnet in the storage box touch
- Stick the hydrophilic adhesive patch to the sticker's side, in which with a temperature sensor point.

TROUBLESHOOTING

1. The TS01 does not turn on:
 - Please put it in the storage box to reboot it and try testing again.
2. No temperature value shows after taking a measurement:
 - Please put it in the storage box to reboot it and try testing again.

OPERATING INSTRUCTIONS

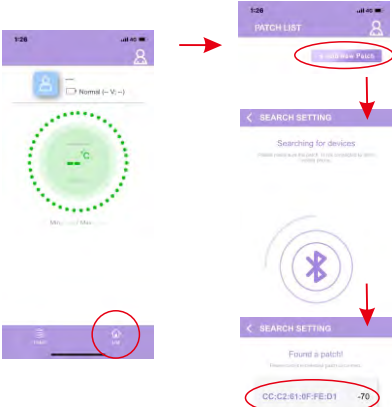
Step 1.
Download the «SELFCare365» application or scan the QR CODE to download.



Step 2.
Activate the Bluetooth® function on your smartphone.

Step 3.
Removed the TS01 from storage box and the device is not power on; LED will flashes for 5 times.

Step 4.
Start the «SELFCare365» App on the smartphone and click on then . APP will search for available TS01, please click the detected device to connect. Note: The device’s name will be shown on the packaging box.



Step 5.
Once TS01’s Bluetooth® is successfully paired with the smartphone, TS01 starts to search for Wi-Fi and transmits all nearby Wi-Fi names to the APP.



Step 6.
Select your Wi-Fi and enter your password. Now, TS01 is connected to the Wi-Fi.

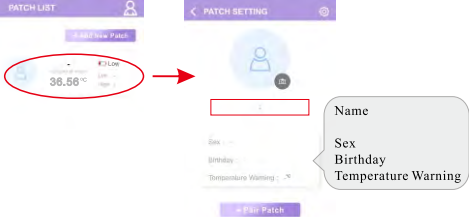
NOTE: TS01 can connect to up to 5 groups of Wi-Fi. If you want to use the thermometer in other places, please repeat the above steps to set and connect to other Wi-Fi.

Step 7.
Once the device is connected to the APP, a measurement is taken every 15 seconds and transferred to the cloud database.



NOTE: You may also track the temperature trend of the previous measurements by click on to enter the cloud database.

Step 8.
Click to check on your device list. You may create different profiles for each device and set up the temperature warning.



- LED flashes rules:
1. The LED flashes five times when power on.
 2. Normal reporting of temperature information to the APP: flashes once every fifteen seconds.
 3. Wi-Fi disconnected (when automatically connected to APP): flashes once every five seconds.
 4. Wi-Fi disconnected (not automatically connected to APP): flashes twice every five seconds.
 5. Cloud server problem: flashes three times in a row.
 6. Failed to send data: flash twice in a row.
 7. Data successfully send: flash once.

After the device is taken from the storage box, the system will automatically turn on, and the following different scenarios might occur:

1. If the device does not set up, the device is always in the Bluetooth® configuration mode.
2. If the device has been set up with APP, the device will be connected via WIFI at the same time and will be in the Bluetooth® network configuration mode within 60 seconds after power on.
3. The device will automatically scan for network access when there is no network connection. The device will scan for the network every 30 seconds.
4. When the Wi-Fi connection is lost, the application tries to reconnect automatically. TS01 will continue to record the temperature (for one hour) and will synchronize with the application as soon as the connection is re-established.



NOTE: If the above process does not solve the issue, contact the original place of purchase. Any unauthorized attempt to open or repair the unit will void the product warranty and after-sales service rights.

CAUTIONS

- Do not place and use this product under high temperature or humidity. Do not expose it to the sun.
- To reduce the risk of fire or explosion, do not expose the device to rain or fire.
- Ensure children do not use this device unsupervised; some parts are small enough to be swallowed.
- Do not apply the device on irritated or damaged skin or if an allergy to plastics and/or adhesives has been detected in the patient.

PRODUCT SPECIFICATIONS

Name	Templus Smart Thermometer
Modle	TS01
Dimensions	30 x 27 x 8mm
Weight	7g±0.5g
Bettyery Life	CR2032 x 1
Measurement Range	35.5~42°C(95.9~107.6°F)
Temperature Display Resolution	0.01°C(0.01°F)
Measurement Accuracy	±0.2°C(0.4°F)
Operating Condition	16~35°C (60.8~95°F) <85%RH
Transportation and Storage Condition	-25~55°C (-13~131°F) <85% RH
Memory Capacity	10 measurements, including date and time of reading

SYMBOL DESCRIPTIONS

	Refer to Manual
	Caution
	Environment Protection
	Temperature Limitation
	Manufacturer
	Batch Code
	Keep Away from Sunlight
	Keep Dry

MANUFACTURER

Ebiologic Technology Co., Ltd.
Address: 9F., No.33, Ln. 3, Sec. 1, Zhongzheng E. Rd., Tamsui Dist., New Taipei City 25147, Taiwan
Tel: +886-2-8631-0059
Fax: +886-2-8631-0297
MADE IN TAIWAN

Federal Communication Commission Interference Statement

This equipment has been tested and found to comply with the limits for a Class B digital device, pursuant to Part 15 of the FCC Rules. These limits are designed to provide reasonable protection against harmful interference in a residential installation.

This equipment generates, uses and can radiate radio frequency energy and, if not installed and used in accordance with the instructions, may cause harmful interference to radio communications. However, there is no guarantee that interference will not occur in a particular installation. If this equipment does cause harmful interference to radio or television reception, which can be determined by turning the equipment off and on, the user is encouraged to try to correct the interference by one of the following measures:

- . Reorient or relocate the receiving antenna
- . Increase the separation between the equipment and receiver.
- . Connect the equipment into an outlet on a circuit different from that to which the receiver is connected.
- . Consult the dealer or an experienced radio/TV technician for help.

FCC Caution: To assure continued compliance, any changes or modifications not expressly approved by the party responsible for compliance could void the user's authority to operate this equipment. (Example - use only shielded interface cables when connecting to computer or peripheral devices).

FCC Radiation Exposure Statement

This equipment complies with FCC RF radiation exposure limits set forth for an uncontrolled environment.

This transmitter must not be co-located or operating in conjunction with any other antenna or transmitter.

This device complies with Part 15 of the FCC Rules. Operation is subject to the following two conditions: (1) This device may not cause harmful interference, and (2) This device must accept any interference received, including interference that may cause undesired operation.