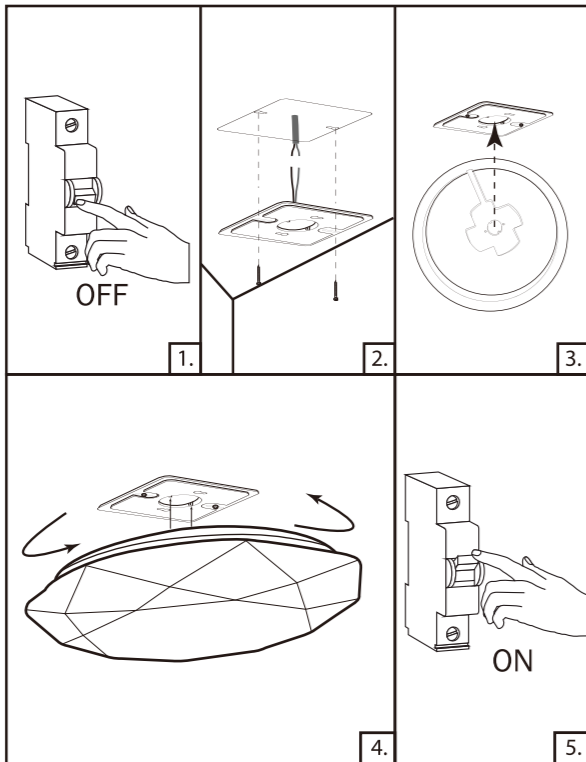
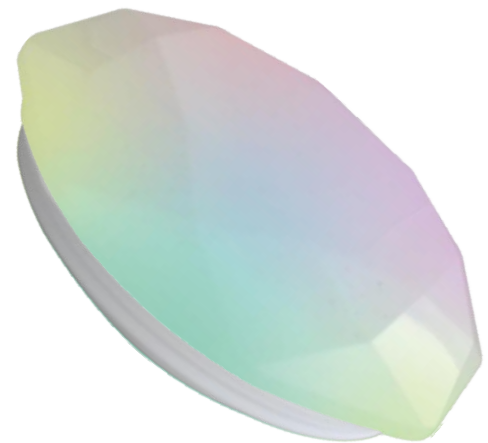


正面

85mm

115mm

Smart Ceiling Light User Manual



CAUTION

USE IN DRY LOCATIONS.
RISK OF ELECTRIC SHOCK OR BURNS

For indoor use only.

Do not install the device with wet hands or when standing on wet or damp surfaces.

Not for use in totally half or fully enclosed luminaires, especially luminaires with metal shade, which may distort the signal and make it harder to connect or control the lights.

Do not use with **Dimmers!**

Get Ready

Know your Wi-Fi network and password
Make sure your mobile device is running iOS® 8 or higher or Android™ 4.1x or higher
Make sure you're connecting to a 2.4GHz Wi-Fi network

*Dual-band Router: Go to the wifi setting of the router and disable 5G wifi network



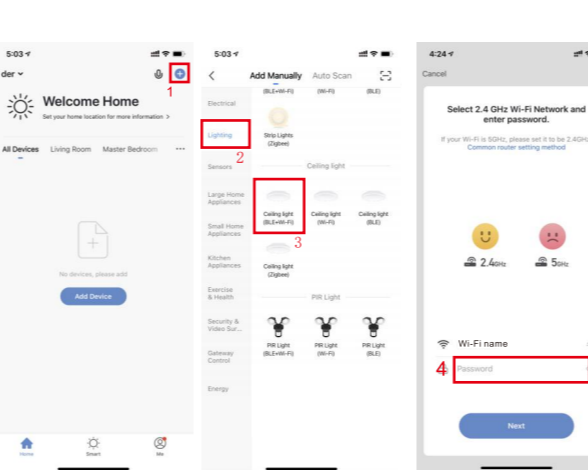
Scan the QR code to download "SMART LIFE" APP

1 Download the free 'Smart Life' app from App store or Google Play and Register

Register or log in if you already have an account.

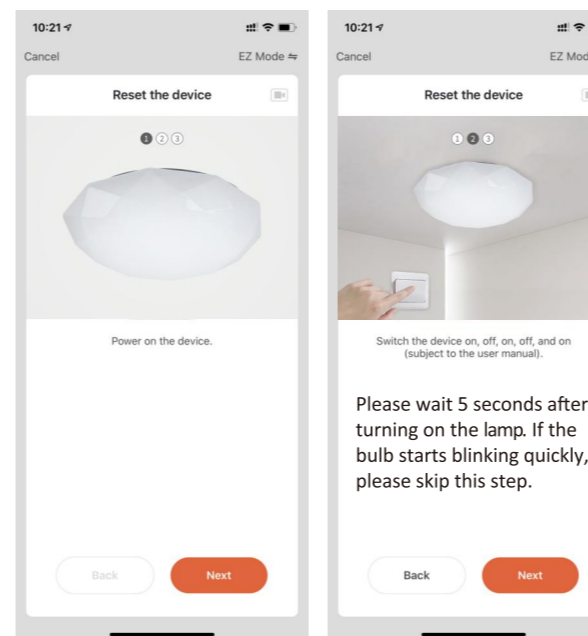


2 Add device



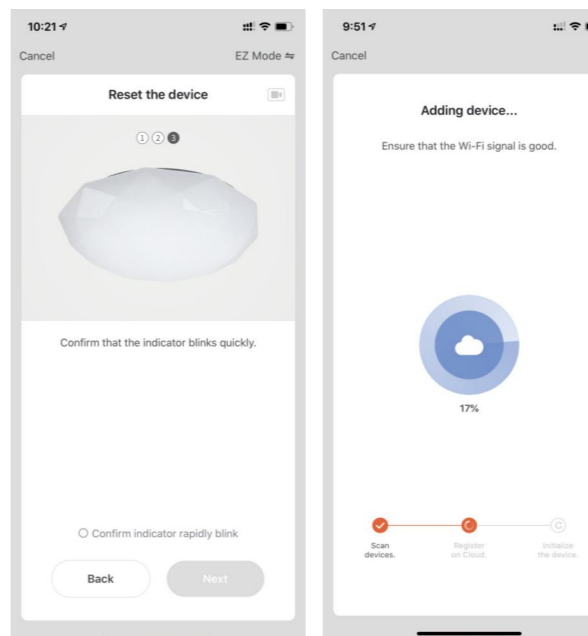
Tap "+" symbol Select Lighting ==>Ceiling Light(Wi-Fi) Enter your Wi-Fi password

Easy Mode



* If the connection fails, try to connect using AP Mode.

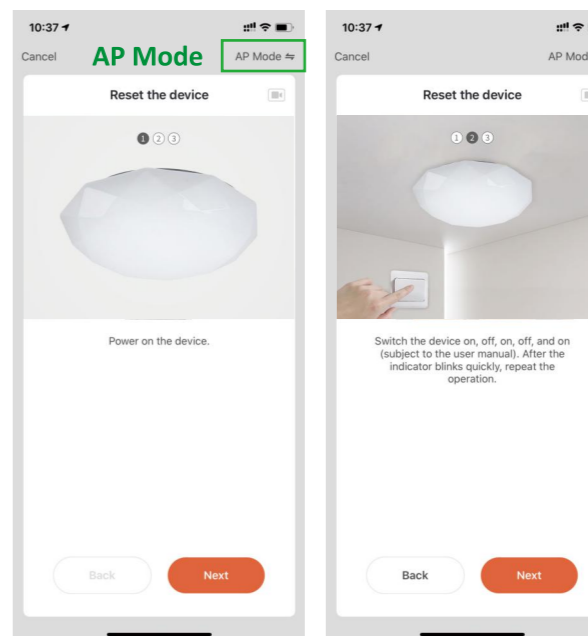
Easy Mode



Confirm and Tap 'Next'

The app will try to connect the smart bulbs

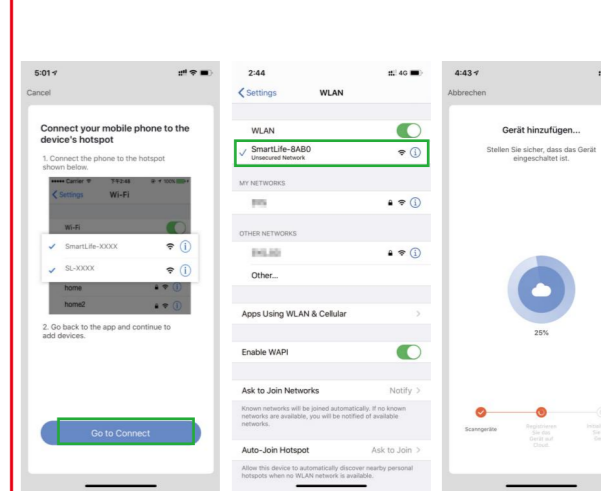
AP Mode



Choose AP Mode

Switch the bulb to blinks slowly

AP Mode



Tap 'go to connect'

Connect to the smartLife-xxx network

Go back to the smart life app, and it will try to connect the lamp

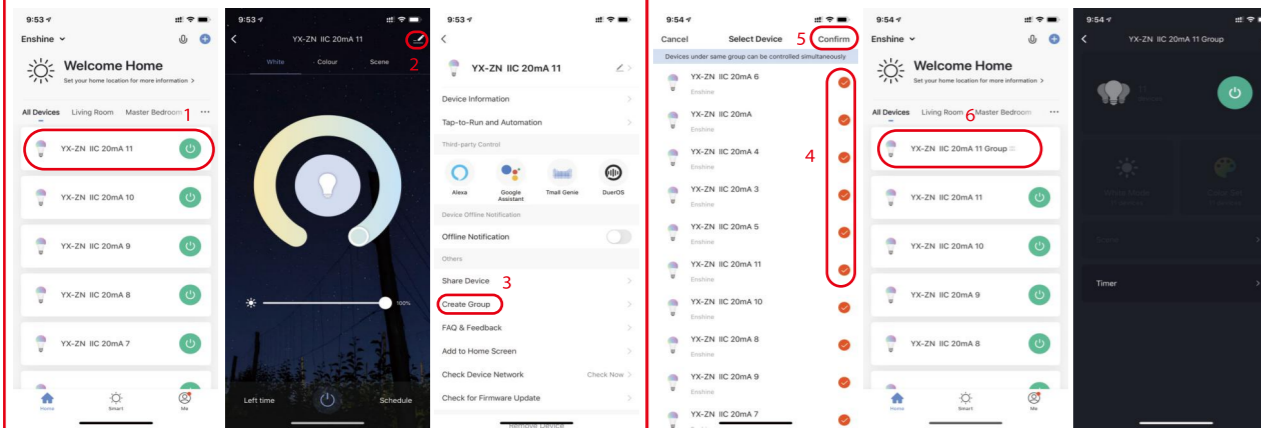
反面

Group Control

1. Tap a smart lamp in the device list to enter its control panel.

Group Control

4. Select devices for unified management. 5. Tap 'confirm' to complete the setup.

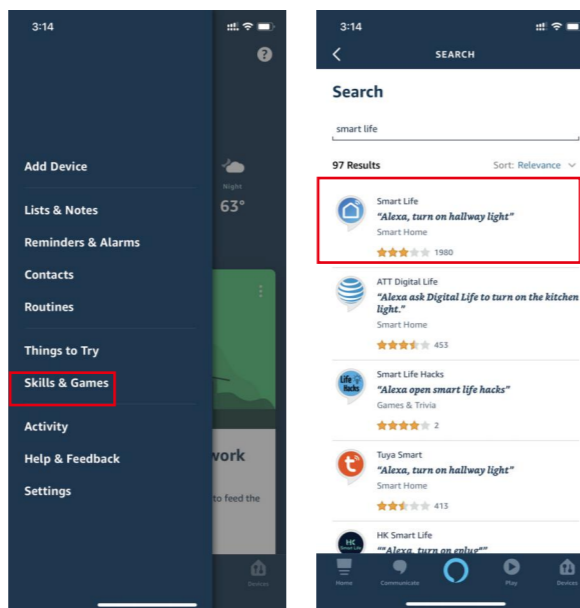


Now, you can use group control to control multiple lamps

Alexa Settings

Enable the Smart Life skills in the Alexa APP, then log in your Smart Life account, it will automatically sync your smart lamp to Alexa.

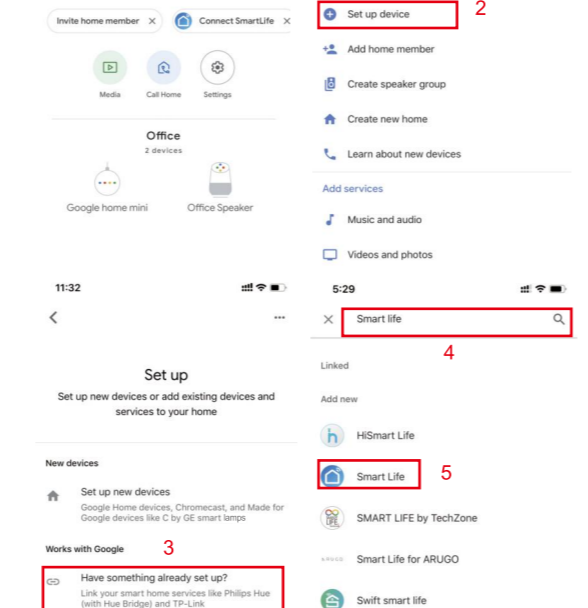
After the synchronization is successful, you can use voice commands to control your smart lamps.



Google Assistant Settings

Tap 'Add' - 'Set up device' - 'Have something already set up?' - search for 'Smart Life' to add it and log in your smart life account.

After the synchronization is successful, you can use voice commands to control your smart lamps.



Frequently Asked Questions

1. What should I do when my device fails to connect to the network?

--Check whether the router password you entered is correct.

--Ensure that broadcasting is enabled for Wi-Fi and is not hidden. Ensure that your device has been added over a Wi-Fi band of 2.4 GHz. (Check whether the 2.4 GHz band and 5GHz band share the same Wi-Fi account. If so, we recommend that you configure two accounts and switch to the 2.4 GHz band during network connection.)

--Ensure that the network environment has strong and stable signals. Troubleshooting: Place your mobile phone or iPad connected to the same local area network close to the device, and open a web page to check whether the browsing is smooth and stable.

--If the network is normal but the device network connection still fails, check whether the router is overloaded. You can disable a device's Wi-Fi feature to reserve the channel for resource reallocation.

--If wireless MAC address filtering is enabled for the router, remove your device from the router's MAC address filtering list to ensure that it is allowed to connect to the network. You can also disable MAC address filtering.

If your device still fails to connect to the network after the preceding steps, please contact with us to troubleshoot this issue.

2. The light changed from flashing to regular, but it still fails to connect?

--Please check if the Wi-Fi password you entered during network configuration is correct.

--Please keep the distance to the router during the network configuration (within 1 ~ 5 meters, there must be no metal spacers in the middle)

--The smart device that your router's CPU can load has reached the upper limit. Please disconnect some devices and try again.

--The device does not reset after the network configuration fails. You can try the network configuration again after the device is reset.

3. My smart lamp was disconnected, how can I reset it?

EZ Mode:

--Make sure the device is powered off for more than 10 seconds before powering on the device.

--Turn on and off three times (on-off-on-off-on) power of the device (2 to 4 seconds between each on and off). Wait a few moments until the lighting starts blinking rapidly.

AP Mode:

--No need to power down the device, but need to keep the lighting device blinking rapidly. Then turn on and off three times (on-off-on-off-on) power of the device (2 to 4 seconds between each on and off). Wait a few moments until the lighting starts blinking slowly.

4. How to configure separate Wi-Fi SSIDs for 2.4GHz and 5GHz?

If your router supports both the 2.4 GHz and 5 GHz bands, but only one Wi-Fi name is displayed on the Wi-Fi search page of your mobile phone, perform these steps:

--Go to the Wireless page of the router. (The entry address is usually provided on the label attached to the back of the router).

--Go to the 2.4 GHz setting page, and set the Wi-Fi name (SSID) to (XXX) -2.4G, where xxx indicates the Wi-Fi name. Save setting.

--Go to the 5 GHz setting page, and set the Wi-Fi name (SSID) to (XXX) -5G, where xxx indicates the Wi-Fi name. Save setting.

--When the preceding settings are complete, the new Wi-Fi names will appear on the Wi-Fi settings page of your mobile phone.

Note: After the Wi-Fi names are changed, you need to reconnect the devices that use this wireless router. The password remains the same if it has not been changed.

To configure the routers of some popular brands like Netgear, ASUS, D-LINK-TP-LINK, please visit FAQ & Feedback on the app for more information.

5. If my Wi-Fi/Internet goes down, will LED smart lamps still work?

LED products need to be connected to Wi-Fi in order to use them remotely.

6. Can I share with family and friends?

Yes, you can share your lamps with family and friends who will have access to control your lamps. In the Smart Life app, press the Profile button and click on the 'Share Device' button, and you will be able to give or revoke sharing permissions. In order to share, the other user should already have downloaded the Smart Life app and registered a new account.

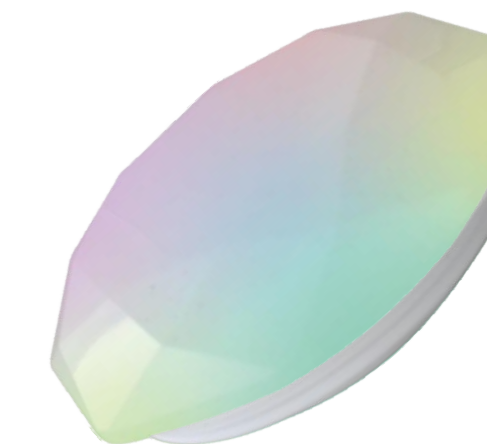
7. The lamp appears offline or unreachable, what should I do?

Check the light switch and make sure that it is switched ON. The light lamp requires an 'always-on' power supply to operate properly. Make sure your Wi-Fi router is online and in range. Make sure you have the latest Smart Life functionality by clicking 'check for firmware update' in your device settings.

8. What's the Wireless Range?

The range of your home Wi-Fi is heavily dependent on your home router and the conditions of the room. Check with your router specifications for exact range data.

Smart Ceiling Light



We offer up to 12-month warranty, 30-day money-back, and 24/7 friendly customer service.

Should you have further questions or require further assistance regarding any product, please contact us via Amazon message, we would be happy to assist.

FCC Warning

This device complies with part 15 of the FCC rules. Operation is subject to the following two conditions: (1) this device may not cause harmful interference, and (2) this device must accept any interference received, including interference that may cause undesired operation.

Changes or modifications not expressly approved by the party responsible for compliance could void the user's authority to operate the equipment.

NOTE: This equipment has been tested and found to comply with the limits for a Class B digital device, pursuant to part 15 of the FCC Rules. These limits are designed to provide reasonable protection against harmful interference in a residential installation. This equipment generates uses and can radiate radio frequency energy and, if not installed and used in accordance with the instructions, may cause harmful interference to radio communications. However, there is no guarantee that interference will not occur in a particular installation. If this equipment does cause harmful interferenceto radio or television reception, which can be determined by turning the equipment off and on, the user is encouraged to try to correct the interference by one or more of the following measures:

- Reorient or relocate the receiving antenna.
- Increase the separation between the equipment and receiver.
- Connect the equipment into an outlet on a circuit different from that to which the receiver is connected.
- Consult the dealer or an experienced radio/TV technician for help.

Radiation Exposure Statement
To comply with FCC RF exposure compliance requirements, this grant is applicable to only mobile configurations. The antennas used for this transmitter must be installed to provide a separation distance of at least 20cm from all persons and must not be co-located or operating in conjunction with any other antenna or transmitter.