

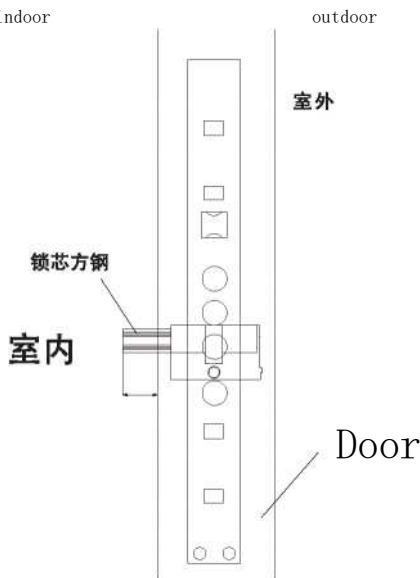
Q7S Fingerprint password smart lock User Manual

Please read this instruction
carefully before using it
This instruction contains the
service guide, please take good
care of it

Installation instructions

Install the safety bar on the back panel, the square bar only needs to insert the bolt slot vertically, the opening pin can not be pulled out.

Figure 1:indoor



Take out the handle connecting pipe and connect the front panel wire to the front panel through the facade and lock body (the correct position of the wire is: the lock hole at the top of the door fan) and insert the square bar into the security door lock body, usually with a short end facing inward.

Insert the front panel wire in the rear panel;

2. The rear panel insurance is aligned with the safety hole;
3. The handle knob is aligned inward and the rotary knob is aligned with the square steel of the lock core.

Do not tighten the screw too tight, move the rear panel, press the knob inward to turn the knob more freely before tightening the connecting screw.

Install lithium battery, cover battery cover and install.

Debug: Press the lock key motor to rotate freely, after the lock is finished, press the rear panel knob, turn freely without Carton condition is normal. If you rotate Catton, release the lock screw 1 circle up and down to move the lock until the knob rotates freely to turn the safety knob to pop up.)

Serial number	Project	Description
1	Working voltage	7V-8.4V
2	Alarm voltage	Below 7.2 V: battery power
3	dormant static current	<80 A
4	Formula	Fingerprint, aim, card
5	NFC	
6	Mouth	Micro USB interface (Charger charging battery)
7	Number of users managed	5
8	Number of ordinary users	295
9	Reference	100
10		100
11	Number of cards	100
12	Card Type and Type	Mifare-l and ISO /IEC 11143-A compatibility
13	Lock (front panel)	Lakes (CLOSE)
14	\pm lock (rear panel)	(CLOSE)
15	(rear panel)	Lakes (OPEN)

Restoring Ex-factory Settings (Initialization System)- Operation on Power Up

- 1、 Remove all batteries from the intelligent lock and disconnect the power supply during testing.
- 2、 Multiple clicks on the rear panel switch lock key to allow the system to discharge completely.
- 3、 Press the rear panel lock key not to loosen, put in the intelligent lock battery.
- 4、 Wait for the system to prompt 5 keystroke sounds (release fingers within

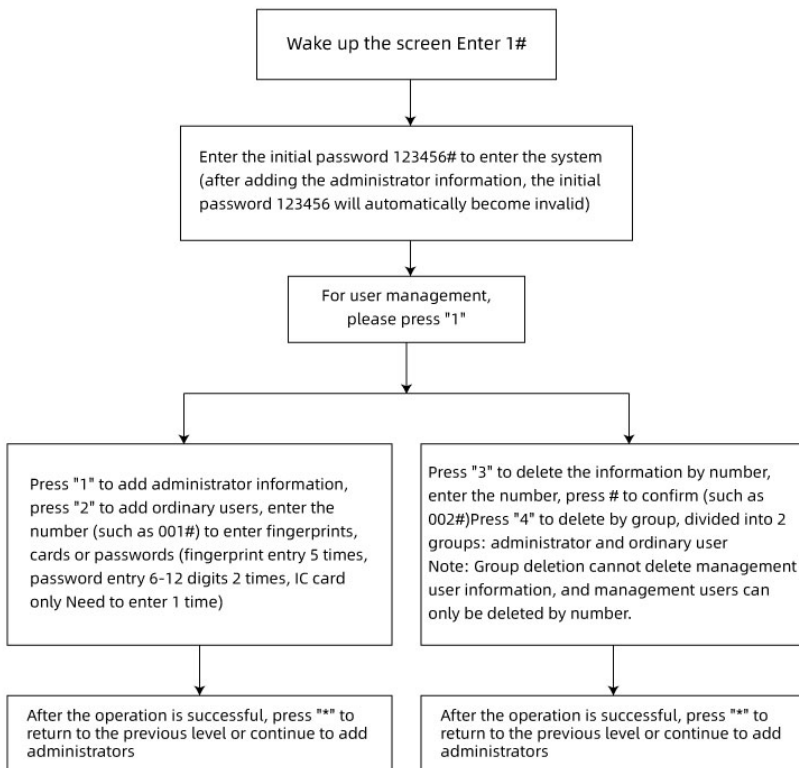
5 times to cancel initialization).

5、 After pressing the key 5 times prompt "initialization, please wait" can loosen the finger, the system into initialization mode.

6、 When the system voice prompt "initialization success ", the system initialization is completed, all user electronic keys empty, enter open demonstration mode.

Note: after initialization, the system administrator password is restored to "123456". After initialization, any fingerprint or card can be unlocked for customers to experience the lock function operation will not affect the direction of the motor, strength and rotation time settings, will save the previous settings parameters.

Administrator action settings

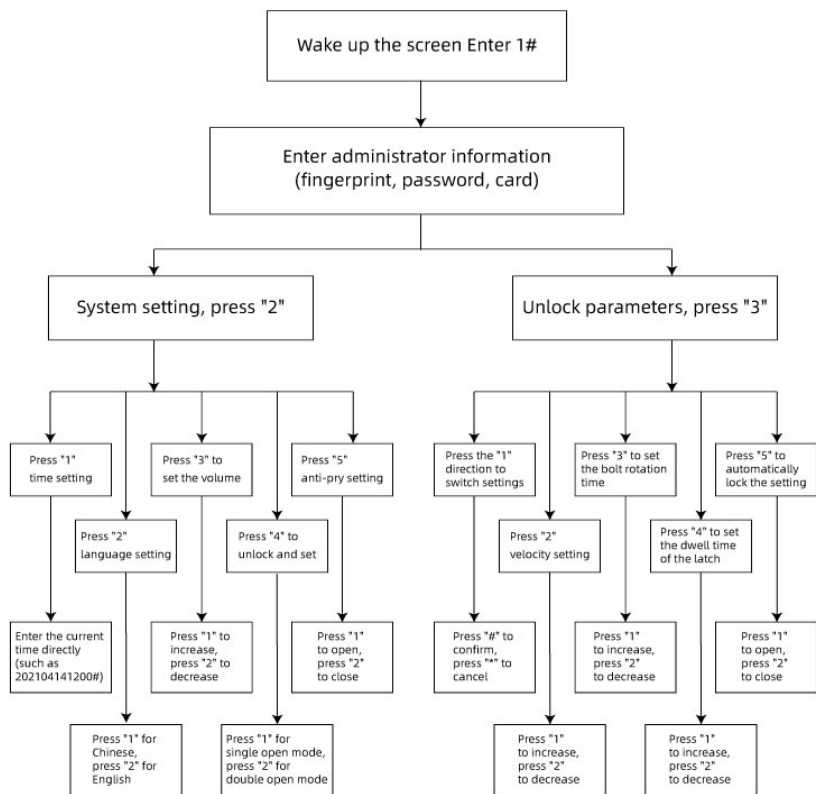


System parameter setting

Restore factory settings (initialization system)

1. enter the system menu, the system prompts:

- User management press 1,
- Press 2 for system setup,
- Unlock parameters press 3,
- Restore factory setting by 4;



2、 Press "4" to select to restore factory settings, because the initialization hazard level is high, so in order to prevent misoperation,

set up a reconfirmation menu, must be confirmed by the user, this time the button confirmed;

3, Enter the initialization interface, initialization process and power-on initialization operation, after initialization will restart the system.

Unlock

1、 In dormant or wake-up state, the card entered into the card area to unlock;

2、 In dormant or wake-up state, put the finger into the fingerprint box to verify the unlock;

3、 Wake-up state will have entered the password input after the key to verify the unlock;

4、 Click the back panel to unlock the key (OPEN) to unlock;

5、 Dynamic password (WeChat Mini Program) unlock, please read the company's "dynamic password operation instructions".

Lock lock

1、 Click the lock key on the front panel in dormant or wake-up state.

2、 Click the back panel to close the lock.

3、 After the automatic delay lock is turned on, the countdown time of dormant state after unlocking will automatically turn off the lock.

Electronic backlock

Press the rear panel lock button 2 S, wait for the front panel to prompt "the door has entered the anti-lock mode" or "the door has withdrawn from the anti-lock mode ", enter the anti-lock can only be unlocked by the administrator, ordinary users can not unlock.

Note: please use this function carefully.

doorbell

In dormant or wake-up state, click the front panel doorbell key (if there is no doorbell key, use the key reuse), this time will ring two doorbells,

can not interrupt, many doorbells need to wait for the system to sleep and click the doorbell key again.

Electricity alarm

- 1、 If the battery voltage is lower than the alarm voltage (default 7.2 V), it will prompt "low battery power ".
- 2, After the switch lock, if the battery voltage is lower than the alarm voltage (default 7.2 V), it will prompt "low battery power ". Warm Tip: need to replace the battery or charge the battery at this time, lest the battery depletion affect the switch lock.

Battery charging and system emergency

- 1、 If the battery has been completely depleted and shut down, it is necessary to charge the battery with external USB power supply. When the voltage rises to the point where the lock can be unlocked, the input information is verified to unlock.
- 2、 After the battery is low, it needs to charge the battery, which can be charged with external USB or removed from the lithium battery.

Warm Tip: do not press the lock key when re-discharging pool, otherwise it will enter initialization, resulting in system information emptying -

Continuous validation error freeze

When the lock body validates more than 5 times in 5 minutes, all operations are frozen

Touch the keyboard and fingerprint head to prompt the system to freeze

System exception handling

No electronic product can guarantee 100% stability, so don't try to get stuck or run

Panic, lock body with emergency reset interface, users can find the reset key and press restart system.

Get WeChat Whip (dynamic password)

1. QR code concern, WeChat "sweep" scan below the QR code can be used, for ease of use, it is recommended that this WeChat Mini Program into the "my Mini Program" 0



2. search attention, WeChat search "lock secret ", as shown below, choose to enter can be used.



■ China Unicom 19: 47 @-f#0B47%OD'
<Q lock secret Q cancellation
Mini Programs Video Encyclopedia - Mini Programs
Lock secret
Smart Locker
Shenzhen Youfang Network *

Secret - Web Search > more

Use Lock app Download | Application Lock Android v1.0_5577 Android

Application lock app has a variety of secrecy,
■ fl can draw a graphical password or set to a digital cipher...
A7 5577 Our Net 2018-12-12

Use Lock APP download | Application Lock Android version download V1.0- run sports car Android

Note Application Lock is a leisure application privacy protection software,
■ can make a secret password for your phone, or you can...
■ Run Sports Car Games 2018-12-12

Sogou Search

Dynamic Cryptography Knowledge Dialysis

Dynamic passwords are also called temporary or offline passwords to solve the following problems:

1. When the host is not at home, the visitor visits or hears his special scene needs to open the door and the host does not want to disclose his original password to the visitor;
- 2、The door lock has no networking function or other remote function that can operate the lock.

The Principle of Dynamic Cryptography

The WeChat Mini Program software on the mobile phone generates a discrete digital array of administrative passwords and current time information through complex encryption algorithms. We combine the numbers to generate a fixed 10-bit password. After the visitor enters this password, the intelligent lock restores the original administrator password and time information through decryption algorithm.

According to the above principle, if you want to use dynamic password normally, you must meet two conditions: manage password and time, so you need to enter the correct management password of intelligent lock. And need to synchronize the time of intelligent lock and network time or within error range, please refer to the operation instructions of intelligent lock.

Note: in order to distinguish the "temporary password" in the Internet of things module, we use "dynamic password ", such as" temporary password "also refers to" dynamic password ".

Enter administrative password

The management password follows the following rules.

- 1、When the user does not set the management password, this function is not available and requires the user to enter at least one set of

management passwords before activating this function.

2、When the user sets the management password, the group of management passwords with the smallest user number must be entered. For example, the password corresponding to number 2 is "123123", and the password corresponding to number 5 is "123456". Enter the password generated by 123456.

3、When the user has set up the management password, if there is a management password or delete the management password, you need to re-enter the new password according to the rules of 1 and 2 above, otherwise the previously generated password will not be used, single password A single password is a password that can only be used once in 10 minutes from the beginning of the generation of this password, beyond this period or has been used, this password will expire.

The process is as follows:



Number of times

Number password refers to the number of times the password can be used within 2 hours from the beginning of the generation of this password, beyond this period or the maximum number of times to use, this password will be invalid;

the maximum number of times of this password is 31 times.

The process is as follows:

III

China Unicom

Lock - Number Password

1. Input Management Password

Can be used 30 times

2. Input usage

Number of times password generated

3. Click Generate Password

Number of times password :9138135598

Effective within 2 hours Use only 30 times in valid time

Click this area to copy the password to the clipboard and send it to the visitor

Temporary password Password Time-limited password Time Password

Short Time Password

Short time limit password is a password that can use unlimited number of times from the specified time when this password is generated. The maximum duration of this password is 127 hours and 30 minutes. And this password must be used once in the smart lock within two hours after generation to activate the password, not within two hours.

The process is as follows:

■ I China Unicom 20:54@-ra Q0 39 per cent

Lock - time password • • • •

1. Input Management Password

Effective time :127 hours :30 minutes 2, input effective | can

Generates time-limited passwords

3. Click to Generate Time Limit Password

Time Limit Password :6692391530

127 hours , 30 minutes,

2019-12-31 Available before 04:00:00

Click on the area to copy the 4. to the clipboard and send it to the visitor

Long time limit password

A long-term password means an unlimited number of passwords that can be

used from the date of generation to the specified end time, beyond which the password will expire; the end time of this password can be very long. Be careful

Use, and this password must be used once on the smart lock after generation to activate the password, not on the same day
With activation, this password will fail, After activation on the same day, there is no limit on the number of The process is as follows:

III China Unicom

©- f#Q038 per cent

Lock - time password

.....

1. Input Management Password

End time: 2021-12-31 23:59:59

Selection of Face Bundles

Generating Time Password

3. Click on Silver Password

Time Password :5564940693

to 2021-12-31 23:00 a.m. valid

Click this area to copy the password to the clipboard and send it to the visitor

List of Products and Accessories

Welcome to buy our products, please accept the following when you open the packing box

Serial number	Products and Accessories	Quantity
1	Front panel	1
2	Front panel door cushion	1
3	Back panel	1
4	Rear door pad	1
5	Instructions	1
6	Charging line	1
7	Lithium batteries	1
8	Toolkit	1
9	Smart card	2
10	Special lock core	1
11	Key keys	2
12	Battery cover	1

Connection WiFi operation steps

WiFi functional items	
Unlock report	doorbell reminder
Add and delete reports	User information set
Remote Unlock	Pry lock alarm
False alarm	Low Power Alarm

1. attention to WeChat Public

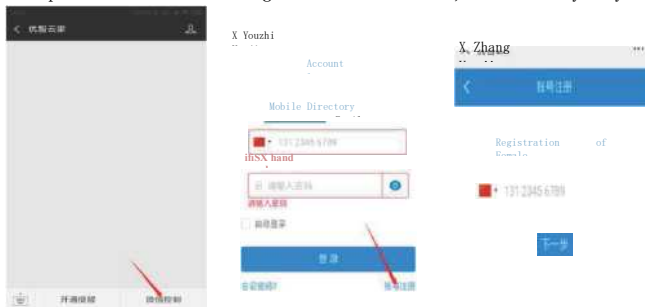


Open WeChat "sweep" or search for "you Zhiyun home ", pay attention to WeChat public number

2. Access Application Registration

Enter "Youzhi cloud home WeChat public number, click on the lower right corner of" WeChat control ", enter the account login interface, then, click on the lower right

Corner' account registration into the account registration interface, support mobile phone and mailbox registration account, choose any way can.



3. setting remote unlock security password

The first login requires a "security password ", which is used for unlock verification. As shown below;

After login, the upper left corner menu bar one set my security password one input security password (remote unlock password) one input account login password one set successfully.



4. Add Equipment

Return to "device list ", click "+" in the upper right corner to add the device, as shown below; add the device for the first time, need to create the home, enter the name of the home, click again on the upper right corner "+".

4.1: Connected device hotspots

Enter this interface, wait, do not click "next ", please WeChat back to the background;

Operation lock into the WIFI hot network state, wake up lock a light press "2#" to verify the administrator information.

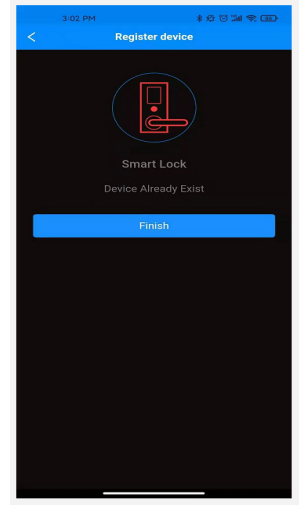
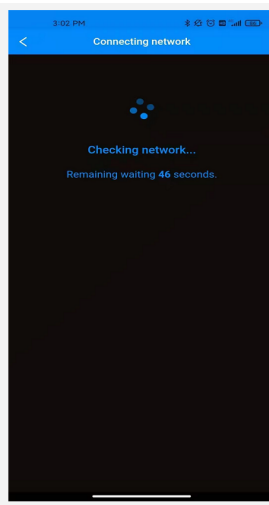
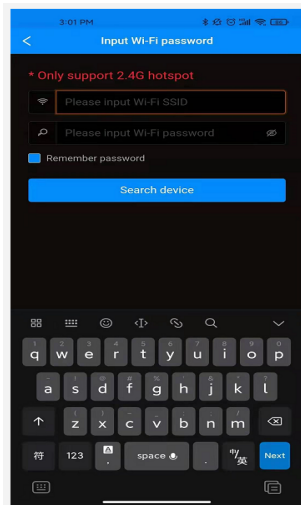
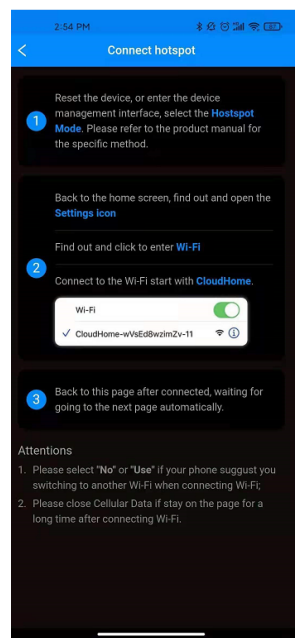
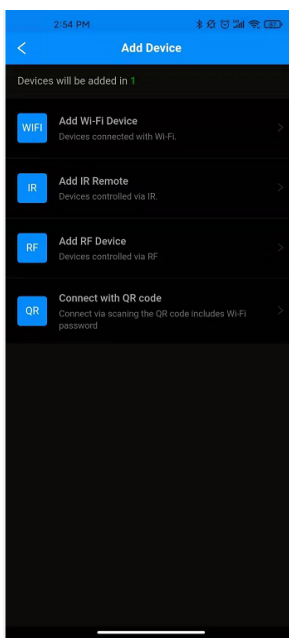
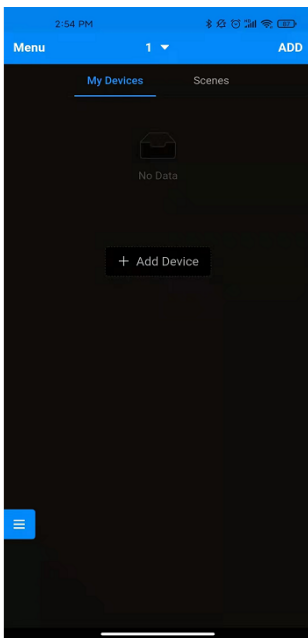
Turn on the phone to set up a WIFI to connect to the CloudHome-XXXX-16 WIFI, after the successful connection to WeChat public number, click on "next ";

Note: some mobile phone Wi-Fi list refresh is slow, please refresh or click on the Wi-Fi switch key to force refresh; the hot Wi-Fi sent out by the device can not access the Internet, some mobile phones may be prompted to switch the network, Select ignore, do not switch, continue to use, etc. If the connection is successful, there will be a language broadcast, but the phone prompt is successful, and the lock does not reflect, the network is actually connected, direct 4.2: select the WIFI to connect

4.3: Enter the correct WIFI password

4.4: Networking

4.5: Registration of new equipment



How 5. Turn on WeChat Reminders

5.1 Access to the Open Reminder page

Click Open Alert to enter the If Settyin you are space not logged in, please log in first.

5.2 Reminders

Click on "open reminder ", as shown below is the success of the opening.



Equipment WeChat Notification

When intelligent lock unlock or remote unlock events, WeChat real-time reminder.

6. how to open locks remotely

Remote Unlock Operation

Remote unlock needs to operate on the door lock to issue a request, in the lock press "4#", the host receives the unlock request, enter the security password to unlock.



How do 7. share devices

7.1 Access to Family Management

Click the upper left menu button to open the application sidebar and select Home Management to click on the family to share.



7.2 Add Family Members Click Add Family Members to enter the user's mobile phone number and address to add. Note that the user must pay attention to this public number and register in advance.

How 8. Note Door Lock Users

Enter the door lock user list into the door lock interface, click on the upper right corner of the "more user list", enter the user list interface, as shown below.



Declaration

When you open the package, if you find that the package box is missing, please contact the local dealer to ensure your use.

Disclaimer

We have done our best to ensure that the information provided in this specification is correct and reliable, but we can not fully guarantee errors before and during printing. Sometimes in order to improve the performance and reliability and safety of components and systems, we may upgrade the product, which may be inconsistent with the instructions, but do not affect the actual operation, please understand! The functions described in this specification do not justify the use of this product for special purposes. The company does not bear the accident and harm caused by the wrong operation of the user.

FCC Warning:

Please take attention that changes or modification not expressly approved by the party responsible for compliance could void the user' s authority to operate the equipment.

This device complies with Part 15 of the FCC Rules. Operation is subject to the following two conditions:

- (1) This device may not cause harmful interference, and
- (2) This device must accept any interference received, including interference that may cause undesired operation.

This equipment complies with FCC radiation exposure limits set forth for an uncontrolled environment. This equipment should be installed and operated with minimum distance 20cm between the radiator & your body.