

## Instruction Manual:

Cautions and Warnings . . . . . Pg 1

## Buttons and Functions

• Controller . . . . . Pg 3  
• Scooter . . . . . Pg 4

## Sidecar

• First-time setup . . . . . Pg 6  
• Add / Remove . . . . . Pg 7

## Vehicle Features

• Stabilizing wheels . . . . . Pg 5  
• Play modes: On/Off/Bluetooth® . . . . . Pg 8  
• Auto-Off . . . . . Pg 8  
• Bluetooth music playback . . . . . Pg 9

## Batteries

• Recharging the RC Scooter . . . . . Pg 10  
- USB cable  
• Batteries in Controller . . . . . Pg 11  
- Battery orientation etc

Caution & Care . . . . . Pg 12

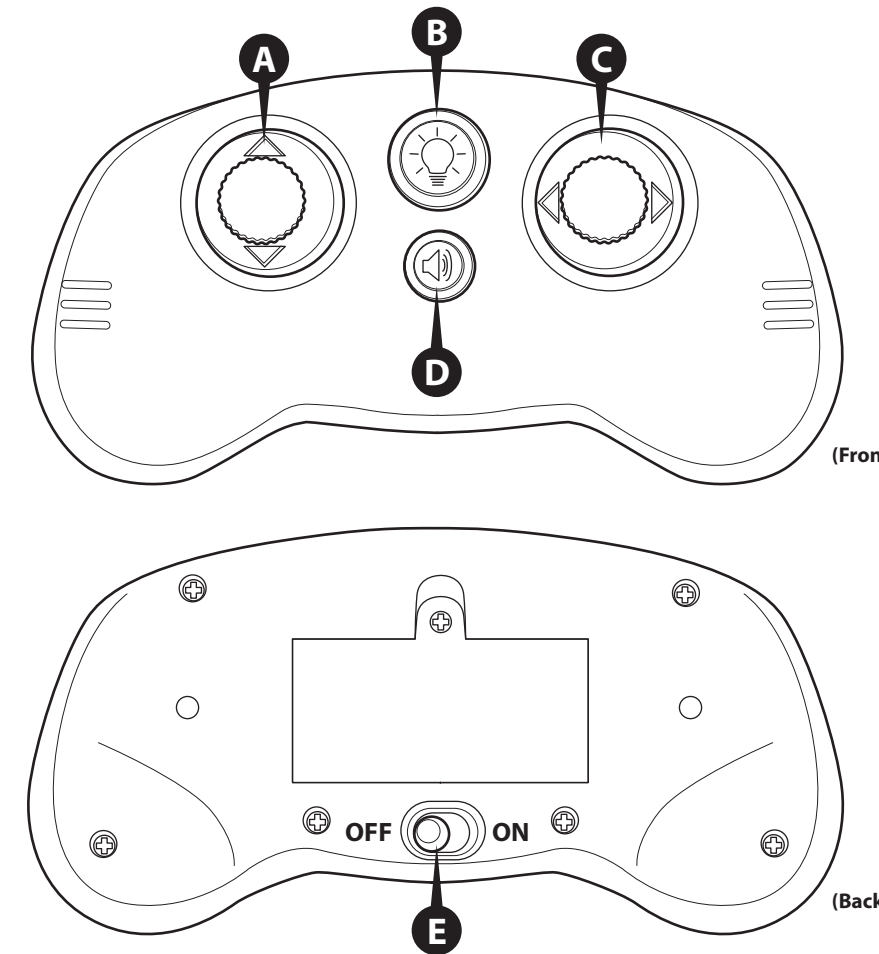
FAQ . . . . . Pg 13

Support . . . . . Pg 13

## Buttons and functions

### Controller Function

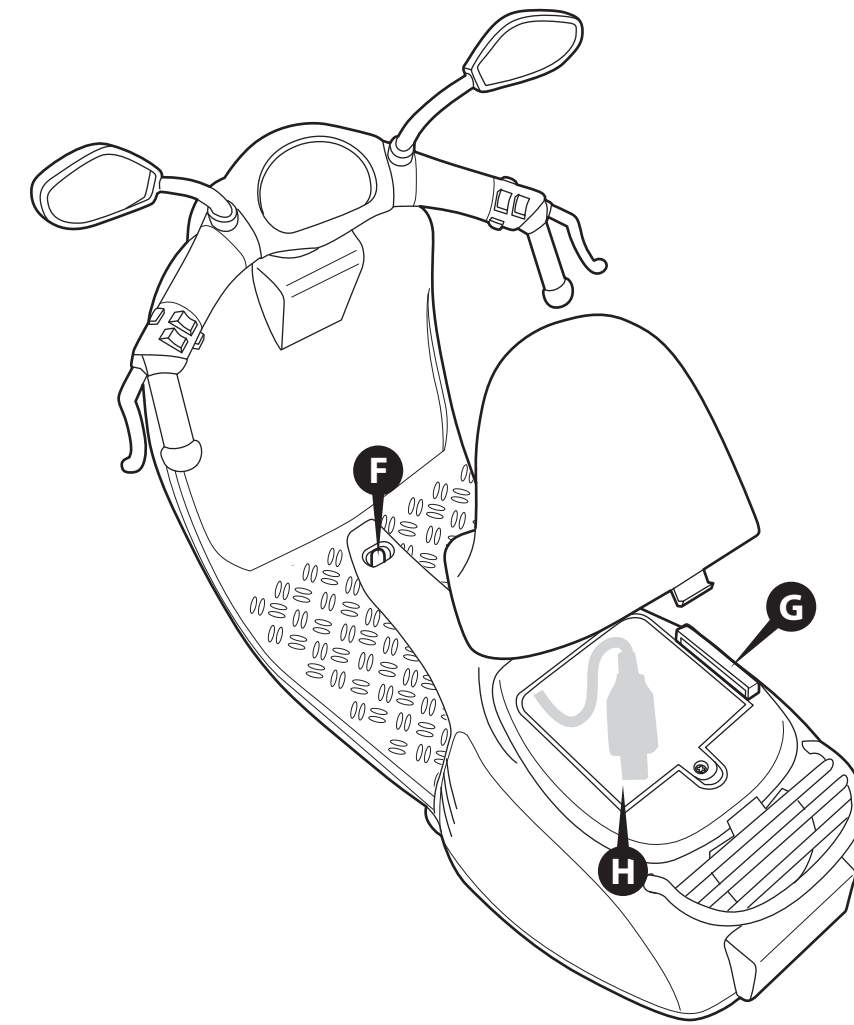
- A: Forward / Backward
- B: Headlamp on/off toggle
- C: Steer Left / Right
- D: Mute / Unmute the sound effect (or music) from the scooter
- E: Controller On/Off switch



## Buttons and functions

### Scooter Function

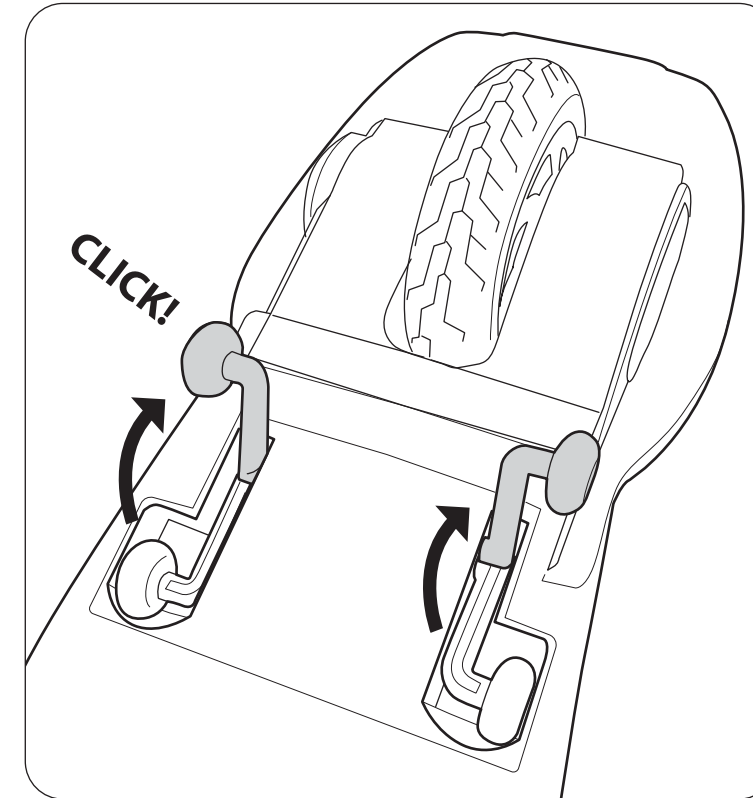
- F: Power/Mode Switch (details in 'Vehicle Features')
- G: Sidecar lock/release button (details in 'Sidecar')
- H: Charging cable compartment



## Vehicle Features

### Stabilizing wheels

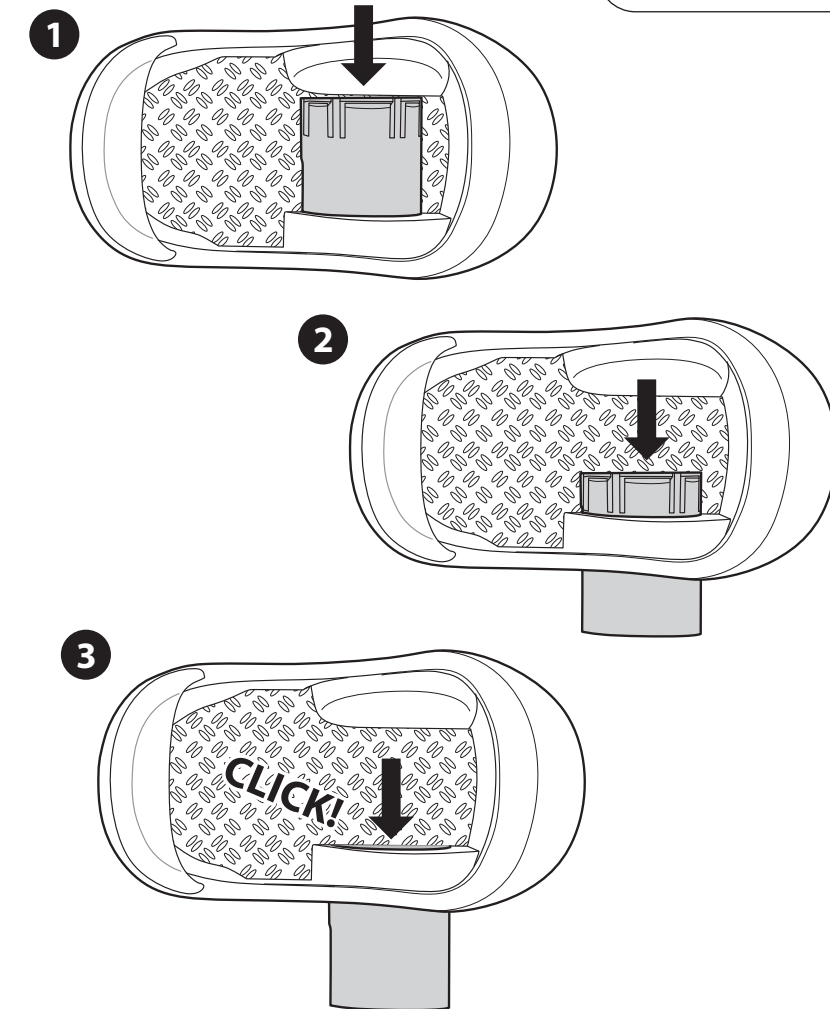
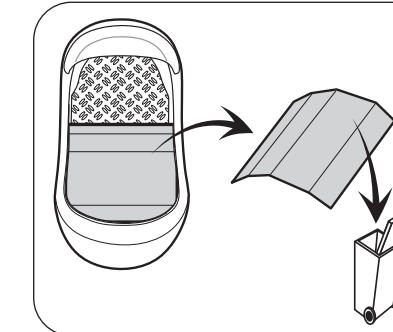
- This RC Scooter comes with self-stabilizing wheels.
- They are needed when playing with the RC Scooter without the sidecar.
- They would also improve the stability of RC Scooter when carrying 18" doll and/or other loads (with or without the sidecar).



## Sidecar

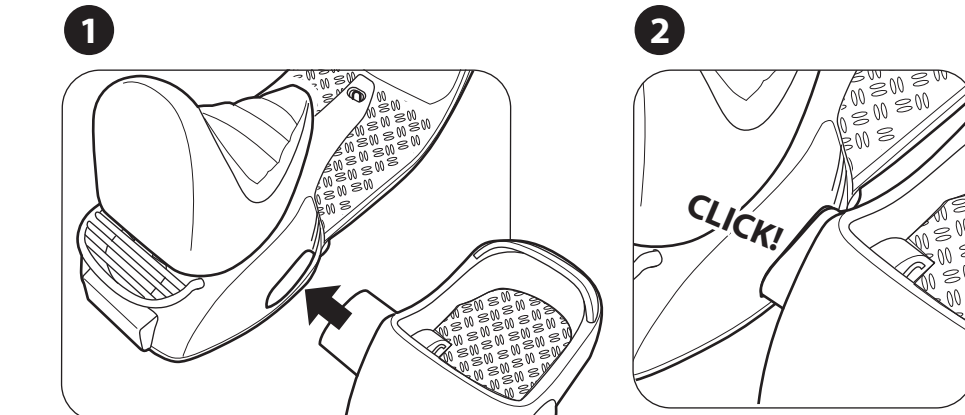
### First time setup

The sidecar comes with a cover cardboard, please discard before first time play. To extend the connection bridge, follow the diagram below until you hear a click sound. Once the bridge is extended, it cannot be undone.

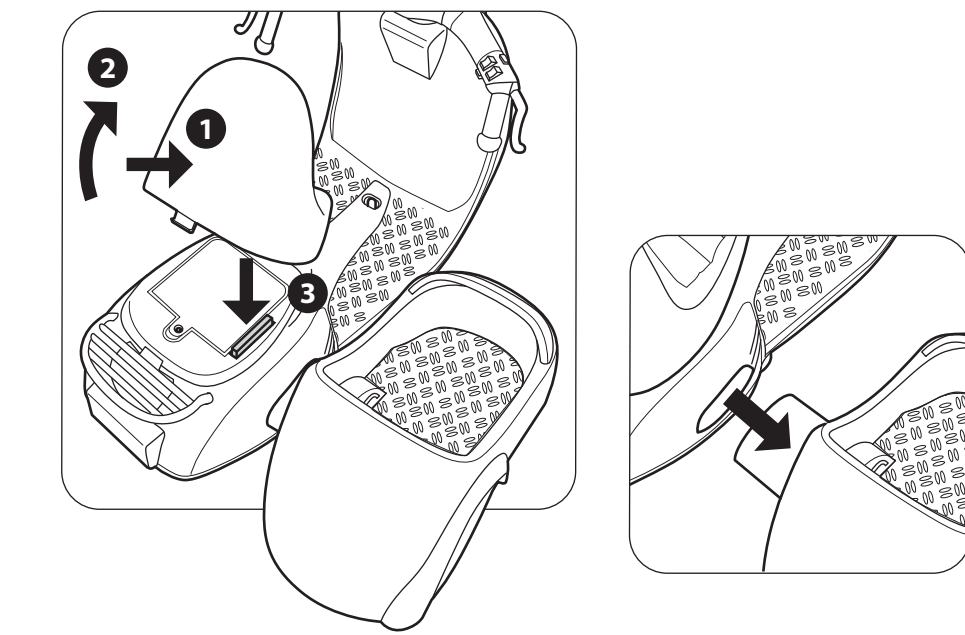


## Sidecar

### Connecting the sidecar to RC Scooter



### Detaching the sidecar from RC Scooter



## Vehicle Features

### Play modes on RC Scooter

On



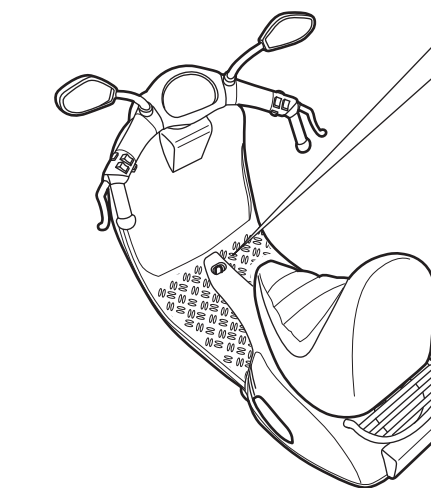
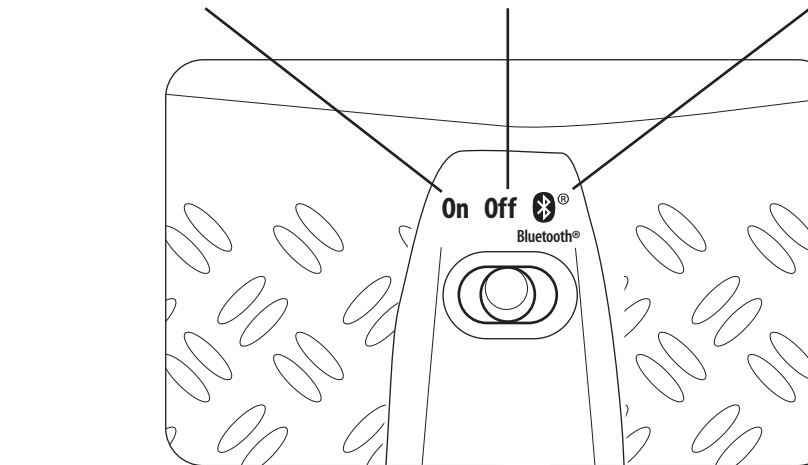
Scooter mode  
(With vehicle sound effect)

Off

Bluetooth®



Scooter with  
Bluetooth® audio  
(No vehicle sound effect)

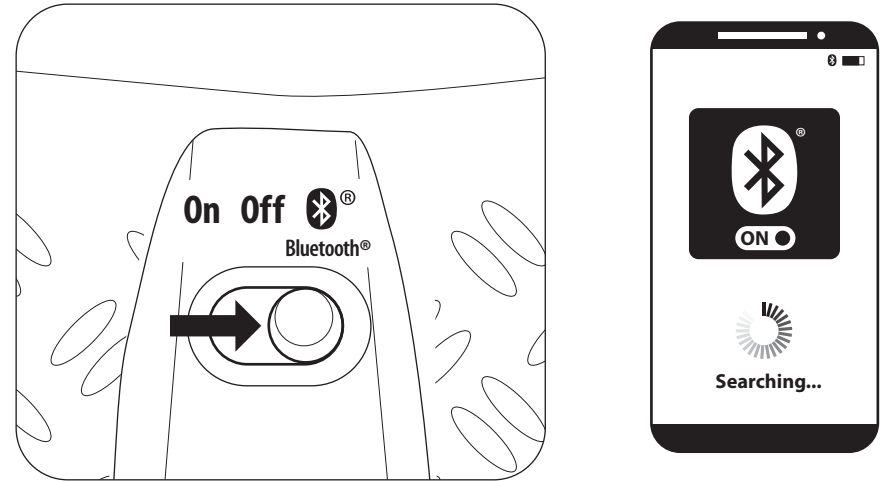


2 Min.  
AUTO-OFF  
saves batteries!  
(to reactivate,  
turn OFF and  
ON again)



Vehicle Features

Bluetooth® audio. Connect to mobile device.



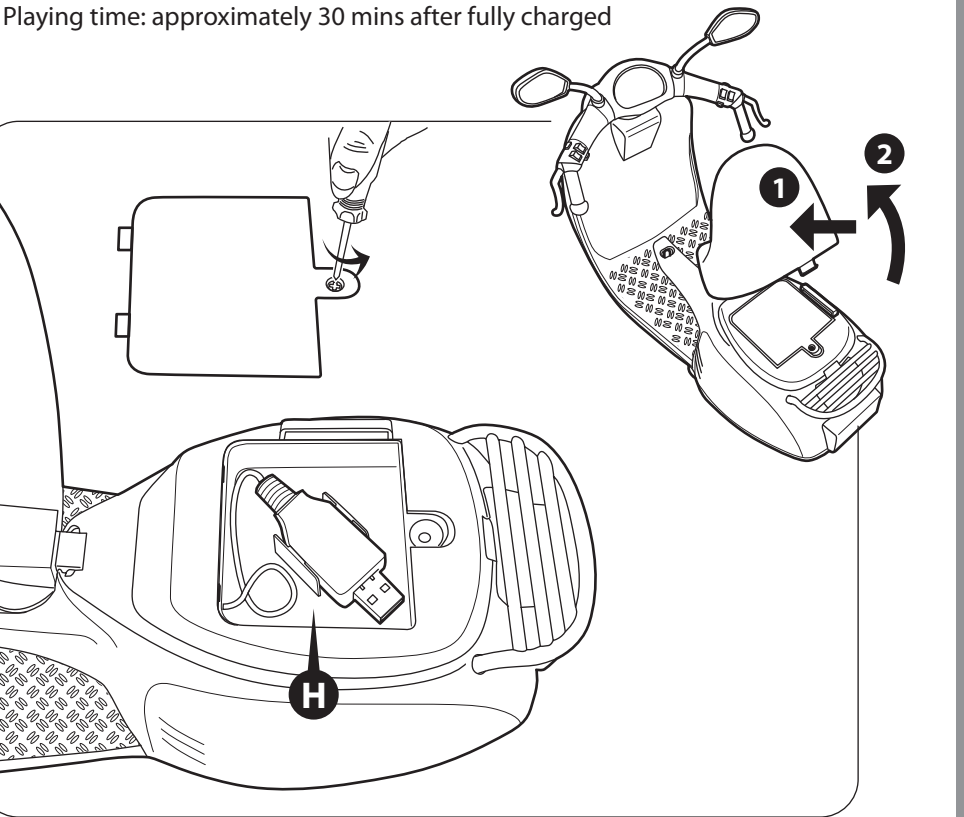
- 1) Switch the RC Scooter to "Bluetooth" mode.
- 2) Enable Bluetooth® on your mobile device.
- 3) Select "MLA RC Scooter" from the device list.  
**Password: 1111**
- 4) You will hear confirmation tone upon successful pairing.
- 5) Music played on your device can now be heard through scooter speakers.

Batteries

Charging the Scooter via USB cable

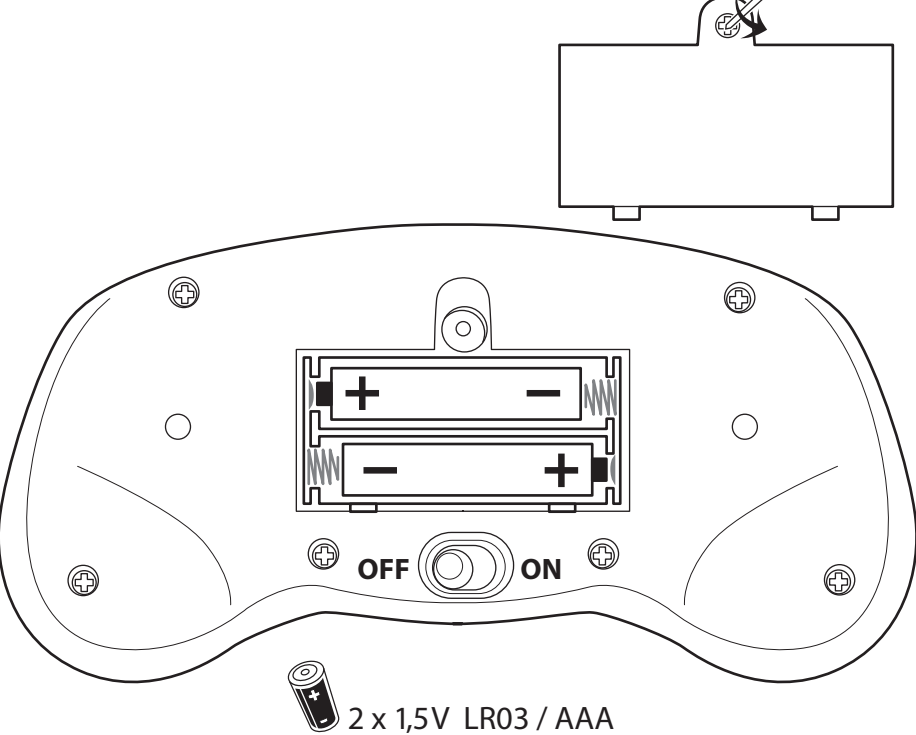
This RC Scooter is equipped with an internal Lithium-Ion battery that is rechargeable via USB. Charging can be done in all ON / OFF / Bluetooth modes. Scooter will not function in charging mode.

- 1) The charging cable is located inside a compartment beneath the seat. (Location 'H' shown below)
- 2) Lift up the seat by pressing the back of the seat while lifting it up.
- 3) Open the storage compartment cover by removing the screw.
- 4) Remove USB cable from the compartment. (Be gentle when extending the USB cable as it is attached to inside battery.)
- 5) Insert the USB connector into a computer or other USB power source (not provided).
- 6) The USB plug will flash red when charging. When charging is completed, the red light stops flashing and stays still. A full charge would take approximately 180 mins.
- 7) Return cord and secure storage lid before operating the scooter.
- 8) Playing time: approximately 30 mins after fully charged



Batteries

Batteries in Controller



This transmitter is equipped with 2.4GHz technology, which allows up to 6 vehicles to be used at the same time. To sync transmitter and vehicle, follow these steps:

- 1) Install batteries in Controller.
- 2) Turn on RC Scooter.
- 3) Once the batteries are installed and the RC Scooter is turned on, the Controller will sync automatically with the RC Scooter.

Caution and Care

Proper Use And Care

- Wipe with soft rag or cloth.
- Do not use chemicals or water to clean.
- Brush areas where dirt get trapped.
- Switch vehicle to OFF when not in use.
- Do not leave out in the sun.
- Do not run into hard objects.
- Do not drive on sand.
- Do not get wet.

Caution!

- Do not recharge internal Battery if vehicle is hot or warm to the touch. Allow Battery to cool before charging. Recharging a hot or warm Battery will shorten the life of the unit.
- Do not recharge the Internal Battery if it appears to be damaged or leaking.
- Always store charging cord in storage compartment when not in use.
- Do not dispose batteries in fire. Leakage, explosion and personal injury may occur.
- Do not attempt to disassemble or remove Internal Battery or charging cord.
- Only an adult should charge Batteries.
- Do not attempt jumps or tricks with this vehicle.

Support

FAQ

1. The scooter tips over with doll riding on it.

Please ensure the doll is holding the handle with both hands and is not leaning to one side.

If problem persists, flipping out the Stabilizing wheels on the scooter base should help. (Refer to Vehicle Feature - Stabilizing wheels)

2. Why the headlamp on scooter keeps flashing?

When the RC Scooter is not connected to the controller, the headlamp will flash continuously. Simply power on the controller, it will connect with the RC Scooter automatically.

3. Why the scooter turns off itself after a while?

To conserve battery, the scooter will Auto-off after 2 mins of inactivity.

You can turn on the scooter by first switching its power button to Off and then On.

FCC and Bluetooth®:

FCC Caution:

Changes or modifications not expressly approved by the party responsible for compliance could void the user's authority to operate the equipment.

Batteries for controller

Important information — please retain! Only use the batteries (2x1,5V LR03/AAA) specified! Put positive and negative pole in the right place! Do not throw away used batteries in the household garbage, but only give them to the collection station or dispose of them at a special garbage depot. Remove empty batteries from the toy. Non-rechargeable batteries must not be recharged. Before charging remove rechargeable batteries from the toy. Rechargeable batteries must be charged under adult supervision only. Do not use different types of batteries and do not mix new and used batteries. Do not short-circuit connector clips. Do not mix old and new batteries. Do not mix alkaline, standard (carbon-zinc), or rechargeable (nickel-cadmium) batteries.

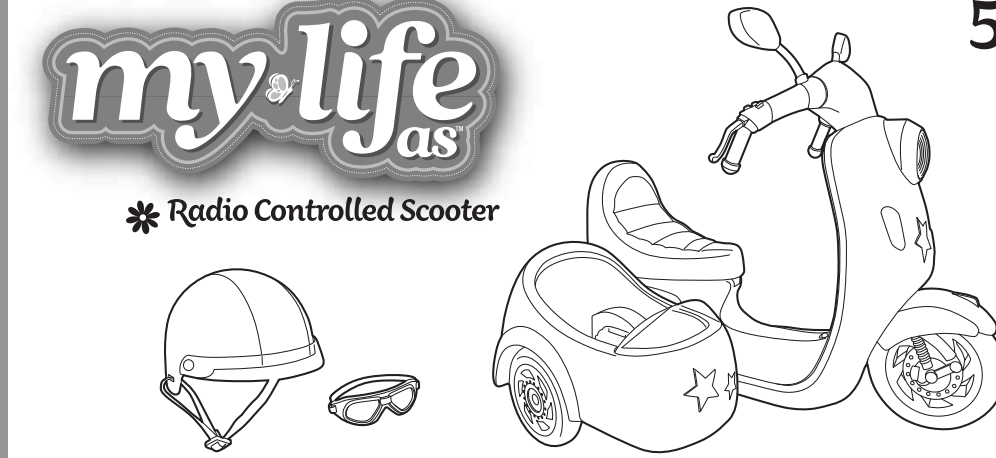
Bluetooth® Technical Specification

Bluetooth® Version: 5.0  
QDID: 110839  
Design model no.: AC6911  
Battery type: Built in Lithium-ion battery 7.4V 600mAh  
OS support: IOS 14.0 or above; Android  
Bluetooth® frequency band: 2.4GHz  
Operation range: up to 10 meters line-of-sight in an open and clear environment.

Battery Disposal (MLA RC Scooter)

Lithium-Ion-batteries - Use and safety information General information: Lithium ion batteries are energy storage devices with a very high power density and are therefore potentially dangerous. They must be handled with great care during charging and discharging as well as when storing or handling for other reasons. Carefully read these instructions before using the battery for the first time and pay special attention to the use and safety information. This will protect you and prevent damage to the product. Misuse increases the risk of explosion, overheating, fire, etc. Failure to observe the use information can cause premature wear or other defects. Safety information: - Avoid short circuits. A short circuit can destroy the product in some cases. Cables and connections must be well insulated. - Always ensure the correct polarity. Always ensure that the battery is connected properly to the charger or model/device. - Do not cut or modify original connectors and cables. - Do not expose battery to excessive heat/cold or direct sunlight. Never throw into fire. Do not let the battery come into contact with water or other liquids. - Only use approved chargers. Never use NiCd/NiMH chargers! This comes to overcharging and poses the risks mentioned above. - Allow battery to cool to ambient temperature before charging. Never charge a hot battery. - Do place the battery on an inflammable, heat resistant surface when charging. Do not place the battery near highly flammable objects. Never leave battery unattended during charging or operation. - Do not use the battery if the casing is damaged. Always prevent damage caused by sharp objects such as knives or similar, dropping, bumping, bending, etc. Discontinue use if battery is damaged! - Always ensure when inserting the lithium-ion-battery into your model that is cannot be damaged or deformed even in case of a crash or fall. Damage to the battery makes it unusable. - Batteries are not a toy. Keep it away from children. Always store out of reach of children. Storage information: Before longer storage the battery must be fully charged. At least all six month the battery have to be one time discharged (drive empty) and charged fully again before storage. Otherwise, the battery will lose its capacity and will become defective. Disposal information: Batteries are hazardous waste. Dispose of damaged or unusable cells properly.

Distributed by Walmart Inc.,  
Bentonville, AR 72716



109413509WMU

Please keep this address and the instructions for use.  
Not suitable for children under three years.  
Choking hazard! Small parts may be swallowed!  
Strangulation hazard due to the long cord and long cable!

**WARNING**  
CHOKING HAZARD—Small parts.  
Not for children under 3 years.

Controller	MLA RC Scooter
2.4GHz FCC ID : 2AZLL109413509	2.4GHz FCC ID : 2AZLL109413509B

This device complies with Part 15 of the FCC Rules. Operation is subject to the following two conditions: (1) this device may not cause harmful interference, and (2) this device must accept any interference received, including interference that may cause undesired operation. Caution: Changes or modifications not expressly approved by the party responsible for compliance could void the user's authority to operate the equipment.

NOTE: This equipment has been tested and found to comply with the limits for a Class B digital device, pursuant to Part 15 of the FCC Rules. These limits are designed to provide reasonable protection against harmful interference in a residential installation. This equipment generates, uses and can radiate radio frequency energy and, if not installed and used in accordance with the instructions, maybe cause harmful interference to radio communications. However, there is no guarantee that interference will not occur in a particular installation. If this equipment does cause harmful interference to radio or television reception, which can be determined by turning the equipment off and on, the user is encouraged to try to correct the interference by one or more of the following measures:

- Reorient or relocate the receiving antenna.
- Increase the separation between the equipment and receiver.
- Connect the equipment into an outlet on a circuit different form that to which the receiver is connected.
- Consult the dealer or an experienced radio/TV technician for help.