

7.4 Configure: Timer

Timer mode automatically shutdown the ROOM within a set duration when activated. Configure the duration of the timer in hours and minute incrementation:

- 1. Select hours from 00hrs to 24hrs and Select minutes from 00mins to 59mins
- 2. Select sanitization power level by tapping ≡ button
- 3. Click "Apply"
- 4. Click "Back" to return to Advance Panel

7.5 Configure: Program

Enable PROGRAM mode from OFF mode:

Press ⏻ twice to select Program mode: press ≡ to cycle sanitization power level until ROOM enters OFF mode. Please see for further details: 6.4 sanitization Power Levels

Program allows ROOM scheduling for the entire week. Set time, day of the week and the sanitization power level. Please ensure the Time and Day is set to your time zone before utilising PROGRAM mode.

- To configure:
- 1. Select the time in hours and minutes (HH:MM am/pm)
 - 2. Select the sanitization power level (Off / Silent / Low / Normal / Boost)
 - 3. Select the day or days (Monday to Sunday)
 - 4. Click "Apply"
 - 5. Click "Back" to return to Advance Panel

Delete a schedule, click "Delete" on the far right side. 30 programs can be scheduled. For further details please go to our website for the latest manual: www.air-halo.com

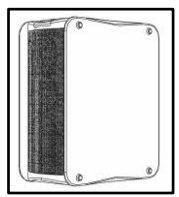
7.6 System: Clock

To ensure Program mode is running correctly, set ROOM to your current time zone. To configure:

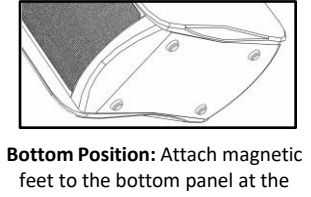
- 1. Set Hours, Minutes and AM/PM
- 2. Set date (DD-MM-YYYY)
- 3. Click "Apply"
- 4. Click "Back" to return to Advance Panel

8 MAGNETIC FEET

ROOM can be positioned vertically or horizontally on the right side panel.



Side Position: Attach magnetic feet to the right side panels at the four corners indicated.



Bottom Position: Attach magnetic feet to the bottom panel at the four corners indicated.

9 MAINTENANCES

9.1 Cleaning Recommendation

- Before cleaning, please switch OFF & Unplug Power Supply
- Surfaces: Slightly damp cloth
 - In/out-vent Metal Mesh: cloth & vacuum
 - Large Dust Filter: vacuum & rinse with water (periodically)

9.2 Surfaces

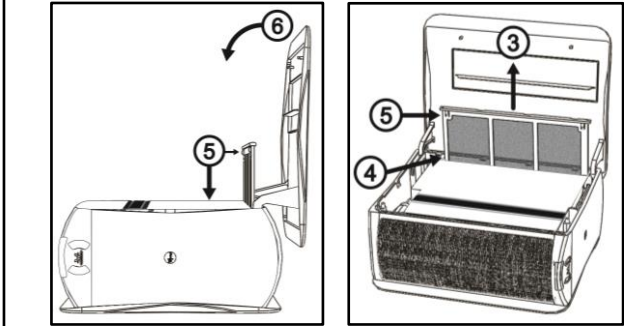
Use a slightly damp cloth to wipe clean any blemish or dirt on the surface.

9.3 In & Out-vent Mesh

Vacuum the mesh carefully, use a cotton bud to remove dust from between the vents.

9.4 Large Dust Filter

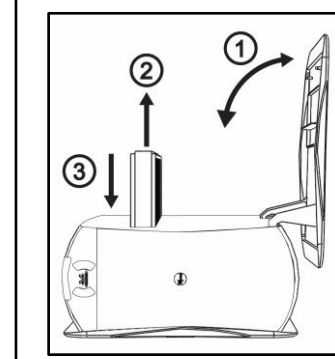
- 1. Position horizontally with left-side panel on top
- 2. Lift the top side panel & gently remove large dust filter
- 3. Wash clean with water & dry thoroughly before replacing
- 4. Vacuum clean any dust or obstruction within
- 5. Align large dust filter with "tabs" facing outwards and push down until it clicks
- 6. Close the top side panel until it clicks



9.5 Fine Dust Filter Replacement

It is recommended to replace fine filter (Type: E12 or H13) every 6-9 months. Before replacement, carefully vacuum around and inside the interior.

CAUTION: Do not remove Fine Dust filter without unplugging power supply first.



To replace the fine dust filter, position with left-side panel on top:

- 1. Lift the front edge of the left-side panel
- 2. Grip firmly to remove and pull out the fine dust filter
- 3. Align replacement filter and push until it is flush with the opening

9.6 Fine Dust Filter Disposal

When fine dust filter is full, do not incinerate. Disposed separately from household waste.

9.7 Repair

Maintenance by user is not advised. For more details please see: 11.2 Warranty

10 SPECIFICATIONS

- Model: AHD01
- Modes: Manual / Timer / Program / ECON
- Sanitization Power Levels: Silent / Low / Normal / Boost
- Weight: 5kg
- Air sanitizer: Plascide Technology
- Recommend Usage: 250ft²
- Supply: 100-220V@50/60Hz | Output: 12V === 5A
- Consumption: 60W
- Dimension (283 x 333 x 140)mm

SUBJECT TO CHANGE WITHOUT PRIOR NOTICE

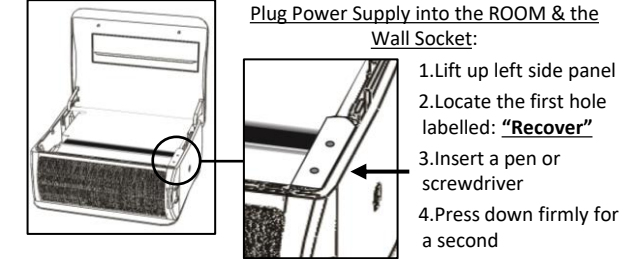
11 SERVICE & SUPPORT

11.1 Troubleshooting

Symptom	Diagnosis	Action
No LED ON, No Fan	Power Cable Not Secured	Plug All Power Supply & Cables Into Socket Securely
No LED ON, Fan On	Low-light Setting On	Tap Buttons For LED Response Please See: 6.1 Function Button
	Low -Light With Timer/Program Mode Activated	
No Button/Fan Response	Left Side Panel Not Closed & Loose Magnetic Feet	Close All Panels & Attach Supplied Feet Please See: 8 Magnetic Feet
Rattling Fan, Loud Fan Noise		
Fan Is On But No Air Flow	Large Dust Filter Need Cleaning	Please See: 9.4 Large Dust Filter
Fan Is On, Large Dust Filter Cleaned But No Air Flow	Fine Dust Filter Need Cleaning	Please See: 9.5 Fine Dust Filter Replacement
All Red LED Flashing		
All Red LED, No Fan, No Button Response	Product Fault	Apply "Factory Default" Or Please See: 11.3 Warranty
No LED or Button Response With Cable Plugged		
Program Mode Not Keeping the correct schedules	Factory reset	If persistent Please See: 11.4 Support
Time & Date not Correct After Every Power Reset		
Forgot login password	Hardware reset	Please See: 11.2 Hard Reset
WIFI not connecting		

11.2 Hard Reset

If you have exhausted all possible solutions to fix your problem. You can perform a hardware reset to restore the factory defaults



11.3 Warranty

- ROOM is covered by a manufacturer guarantee and warranty
- Self-repair and/or signs of tampering will void the warranty
- Repairs should only be carried out by a certified person
- Please refer to the included warranty card for more details

11.4 Support

Latest documentation, email: support@airkave.com
Please contact your local service centre: T: 800-873-1038 | W: WWW.AIRKAVE.COM | KAVE INDUSTRIES LLC
8605 SANTA MONICA BLVD #53476, LOS ANGELES, CA 90069

Advisory Statement: This product may cause interference to radio equipment and should not be installed near maritime safety communications equipment or other critical navigation or communication equipment operating frequency is 0.025 MHz.

FCC Compliance notice: The wireless airkave has been tested and found to comply with the applicable limits under Part 18 of the FCC Rules. These limits are designed to provide reasonable protection against harmful interference to licensed radio services. However, the airkave generates, uses and can radiate radio frequency energy and, if not installed and used in accordance with the instructions, may cause harmful interference to radio communications. There is no guarantee that interference will not occur in a particular installation. If this airkave does cause harmful interference to radio or television reception, or to another authorized radio service, which can be determined by turning the Hotspot off and on, the user is encouraged to try and correct the interference by one or more of the measures described immediately below:

- Reorient or relocate the receiving antenna.
- Increase the separation between the equipment and receiver.
- Connect the equipment into an outlet on a circuit different from that to which the receiver is connected.
- Consult the dealer or an experienced radio/TV technician for help.

EN INSTRUCTION MANUAL Model: AHD01



- 1. OVERVIEW
- 2. KEY FEATURES
- 3. PACKAGE CONTENT
- 4. QUICK START GUIDE
- 5. SAFETY PRECAUTIONS
- 6. OPERATION GUIDE
- 7. PANELS
- 8. MAINTENANCES
- 9. MAGNETIC FEET
- 10. SPECIFICATIONS
- 11. SERVICE & SUPPORT

PLEASE READ THIS MANUAL BEFORE USE

