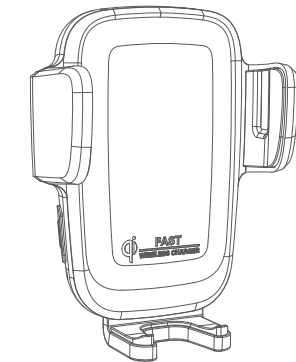


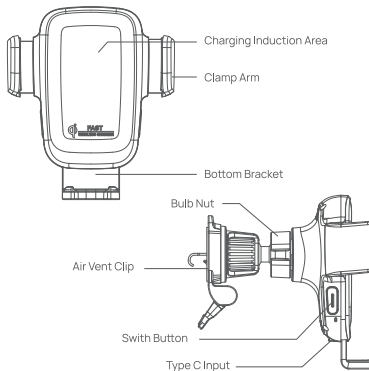
15W Wireless Car Charger

User Manual

Model: X05S



Product Details



Package Contents

15W Wireless Charger × 1
Air Vent Clip × 1
Suction Cup Base × 1

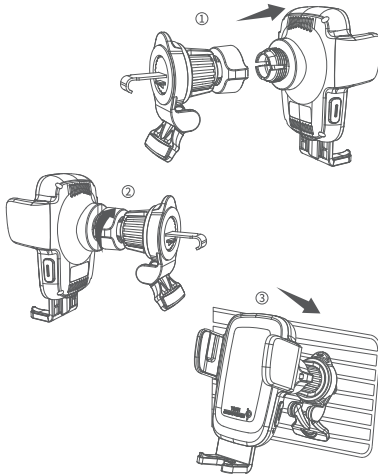
Type C Cable × 1
Bulb Nut × 1
QC 3.0 Car Charger × 1
User Manual × 1

EN

Thank you for selecting our product. Before utilizing it, please take the time to thoroughly review and strictly adhere to the included instructions and safety precautions.

Installation Steps

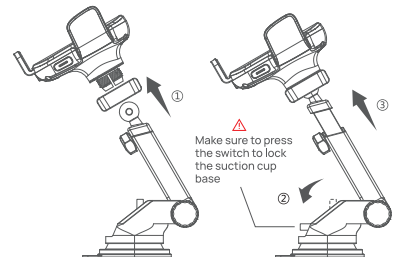
Install the air vent clip as pictures



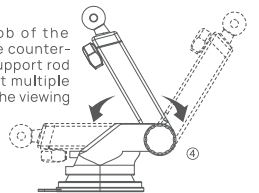
Open the clip and insert the air vent blade, adjust the angle of the mobile phone and the support rod, and then tighten the knob to complete the installation.

Install the suction cup base as pictures

1. Connect the suction cup base to the product, insert the universal ball into the nut first, then insert it into the bolt on the back of the product and tighten the nut clockwise.
2. Place the base on the dashboard or windshield, press the vacuum switch to fix it.
3. Open the retractable arm, stretch and adjust the support arm.

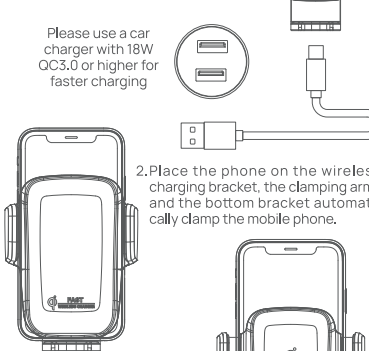


4. Loosen the knob of the suction cup base counter-clockwise, the support rod can be rotated at multiple angles to adjust the viewing angle.



Usage steps

1. Use the Type-C cable in the package to connect the holder to the car charger, and the left and right clamping arms and bottom bracket open automatically.



3. Press the switch button on one side, the clamp arms will automatically open, and the phone can be taken out at this time.

Specification

Input: 5V=2A / 9V=2A / 12V=1.5A
Output: 5W / 7.5W / 10W / 15W
Input port: Type-C
Applicable size: 4.5-6.7 inch mobile phone
Applicable place: Air outlet / Dashboard / Windshield

Important Safety Instructions

1. Please place it out of the reach of children.
2. Cannot be used in humid environments.
3. It is forbidden to disassemble the product without authorization.
4. Please avoid violently hitting or bumping this product.
5. Non-professionals, please do not open or repair this product by yourself.
6. This product belongs to the motor gear bite control, please do not use external force to move the left and right clamp arms.
7. Pay attention that this product needs to be equipped with QC2.0/QC3.0 and other formal certified car chargers to adapt.
8. This product uses the principle of wireless charging and capacitive sensing, which is put and used, touch and take.

Attention

The back of the phone must not be adorned with ring buckles, items that augment its thickness, or metallic objects, as these will hinder the effectiveness of the phone's wireless charging capabilities.

FCC Warning

This device complies with part 15 of the FCC Rules. Operation is subject to the following two conditions:
1. This device may not cause harmful interference.
2. This device must accept any interference received, including interference that may cause undesired operation.

Any Changes or modifications not expressly approved by the party responsible for compliance could void the user's authority to operate the equipment.

This equipment has been tested and found to comply with the limits for a Class B digital device, pursuant to part 15 of the FCC Rules.

These limits are designed to provide reasonable protection against harmful interference in a residential installation. This equipment generates uses and can radiate radio frequency energy and, if not installed and used in accordance with the instructions, may cause harmful interference to radio communications. However, there is no guarantee that interference will not occur in a particular installation. If this equipment does cause harmful interference to radio or television reception, which can be determined by turning the equipment off and on, the user is encouraged to try to correct the interference by one or more of the following measures:
1. Reorient or relocate the receiving antenna.
2. Increase the separation between the equipment and receiver.
3. Connect the equipment into an outlet on a circuit different from that to which the receiver is connected.
4. Consult the dealer or an experienced radio/TV technician for help.

FCC RF exposure statement

The equipment complies with FCC radiation exposure limits set forth for an uncontrolled environment. This equipment should be installed and operated with minimum distance between 20cm the radiator your body.



Konformitätserklärung
Ningbo youdian Electronic Technology Co., Ltd. erklärt hiermit, dass Produkttyp die Richtlinien 2014/53/EU erfüllt. Der vollständige Text der EU-Konformitätserklärung ist unter der folgenden Internetadresse verfügbar:
<https://www.kpontech.com>
Ningbo youdian Electronic Technology Co., Ltd.
Address: Room680-10hao, No.1 Building, Meishanyan-chang Beilun District, Ningbo, Zhejiang, China 315800

Dieses Produkt erfüllt die Anforderungen der Europäischen Gemeinschaft an Funkstörungen.

| | |
|--|---|
| | Verwendung nur in Innenbereichen |
| | Dieses Symbol bedeutet, dass das Produkt nicht als Hausmüll entsorgt werden darf. Stattdessen ist es an der jeweiligen Sammelstelle für das Recycling von Elektro- und Elektronikgeräten abzugeben. |

KPON
KEEP POWER ON

Email: service@kpontech.com
Website: <https://www.kpontech.com>