

# USER MAUNAL

This product is 2.4G Wireless Mouse.

Product description see below

1. Compatible with USB1.1/2.0 specifications and passed USB-IF and WHQL test certification
2. 16 channel automatic frequency hopping, strong anti-interference ability
3. Excellent RF characteristics to ensure long-distance/non-direction
4. Full-speed USB, 2 modes, game mode (250Hz)/office mode (125Hz) Can switch online 250/125Hz
5. Support two coding methods (hardware pairing, PC software pairing)
6. Support sensor type The original series: 3212/3205/3065/3204UL/V108//8640  
Built-in sensor optimization algorithm to ensure smooth and smooth
7. 6 function keys: left key, middle key, right key, forward key, back key, DPI key

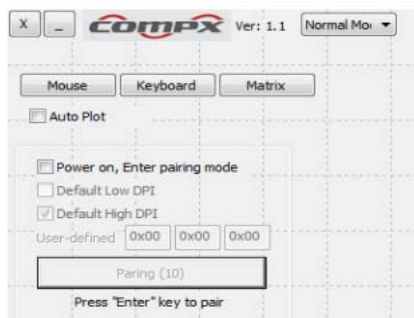
## Instructions

### ■ Code

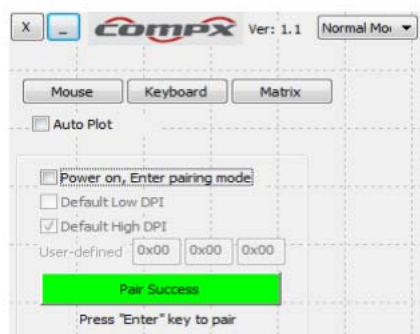
2 ways, hardware pairing + PC software pairing

#### A. Hardware pairing:

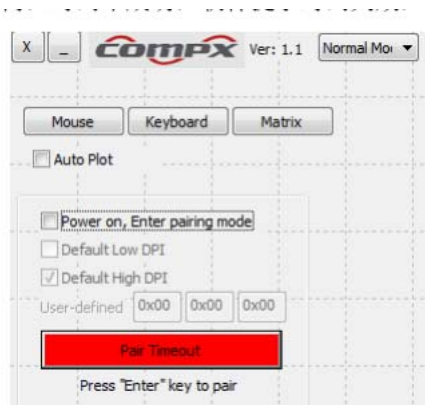
1. After powering on, short press the left + center + right three keys at the same time for 1 second, the mouse enters the code matching mode for 20 seconds, and the LED is on continuously.



2. Insert the receiver within 20 seconds, the LED will be off, and the code matching is successful  
If more than 20 seconds or if the code matching fails within 20 seconds, the mouse will exit the code matching mode and the LED will be off.
- B. PC software code matching:



1. Open the code matching software, insert the USB into the receiver, and automatically enter the code matching mode



### Multi-level smart power saving

1. Stop for 1 second, enter the first-level sleep mode, the current is less than 0.3mA
2. Stop for 1 minute, enter the secondary sleep mode, the current is less than 0.15mA
3. After 15 minutes of parking, it enters the three-level sleep mode, the Sensor LED is off, and the current is less than 30uA

- \* In the primary/secondary sleep mode, the mouse can be moved to wake up
- \* After the Sensor LED is turned off, you need to press the key or the scroll wheel to wake up the mouse
- \* Unplug the receiver or turn off the PC, the Sensor LED light will automatically turn off. In this state, press the key to wake up the mouse,
- \* If the button/roller wakes up, the first time the button is pressed, it is a wake-up function and not used as a function button

Operation frequency: 2402.85-2480.85MHz

### FCC Warning Statement

Changes or modifications not expressly approved by the party responsible for compliance could void the user's authority to operate the equipment. This equipment has been tested and found to comply with the limits for a Class B digital device, pursuant to Part 15 of the FCC Rules. These limits are designed to provide reasonable protection against harmful interference in a residential installation. This equipment generates uses and can radiate radio frequency energy and, if not installed and used in accordance with the instructions, may cause harmful interference to radio communications. However, there is no guarantee that interference will not occur in a particular installation. If this equipment does cause harmful interference to radio or television reception, which can be determined by turning the equipment off and on, the user is encouraged to try to correct the interference by one or more of the following measures:

- - Reorient or relocate the receiving antenna.
- - Increase the separation between the equipment and receiver.
- - Connect the equipment into an outlet on a circuit different from that to which the receiver is connected.
- - Consult the dealer or an experienced radio/TV technician for help.

This device complies with part 15 of the FCC Rules. Operation is subject to the following two conditions: (1) This device may not cause harmful interference, and (2) this device must accept any interference received, including interference that may cause undesired operation.