

Smart Switch User Manual

Please read the user manual carefully and keep it properly

This product is based on intelligent lighting controller, intelligent dimming controller, curtain controller, scene controller, smart socket and other intelligent products developed on Tuya intelligent platform. It can realize local touch control, APP remote control and intelligent voice control.

This manual applies to multiple intelligent products category of WiFi ZigBee Bluetooth Mesh three communication modes. As follows:

- Intelligent Lighting Controller
- Intelligent Dimming Controller
- Intelligent Curtain Controller
- Intelligent Scenario Controller
- Intelligent Socket Controller

Product General Parameters

Input Voltage: AC 100 ~ 240V 50-60Hz

Power Supply Mode: Live Wire + Neutral Wire

Control Mode: APP remote control, Local touch control, AI speaker control

Support System: Android & IOS

Standby Power Consumption: =0.5W

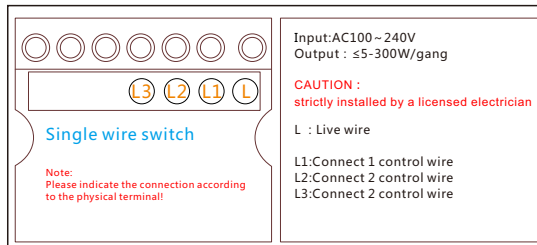
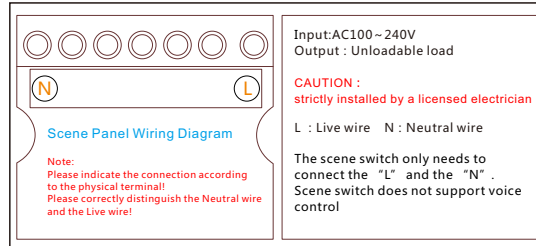
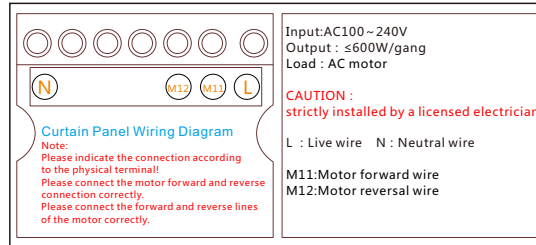
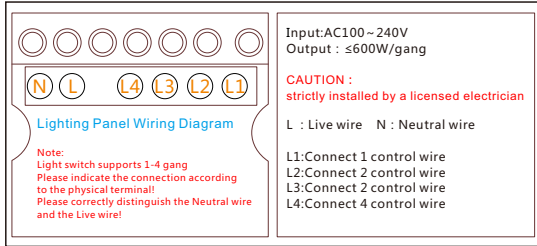
Housing Material: PC flame retardant material

Panel Material: Tempered glass

WiFi Wireless Standard: Support 802.11 b/g/n

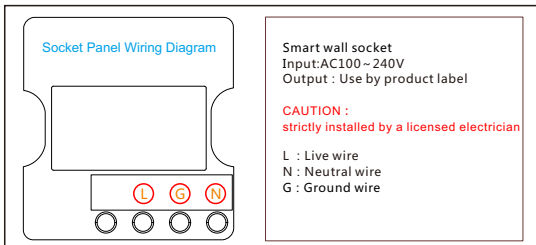
Installation Instructions

- Check the product category you purchased, and wire it according to the corresponding graphic method below;
- Ask a professional electrician to install and prohibit live operation;
- Please choose the bottom box of 50-60 mm depth for easy installation of smart switch.



Single fire switch use note:

- Please use branded lamps larger than 5W.
- If there is flicker or other phenomenon during use, please contact the merchant to communicate.
- After the single fire switch is connected to the network, the network light is off.



Smart wall socket use note:

- Wall sockets include, with USB socket, 16A dedicated socket, etc., please strictly follow the product label.
- The network light of the wall outlet is blue; the switch status light is red.

APP download and device connects with network instructions

- Download and install the "Tuya Smart" or "Smart Life" APP.



- Sign in APP or sign up APP's account: Go to the APP page and follow the prompts to register with your mobile phone number and log in to the app.

- Add device to the network (APP operation)

a: Press and hold any button of the smart switch for 6-8 seconds, wait for the signal indicator to start flashing quickly, open the APP. Make the following settings; As Figure 1 to Figure 3 show.

- Click the "+" symbol in the upper right corner of the APP, select the device type you want to add, and enter the Add Device interface;
- Then follow the steps of Figure 1 - Figure 3 and the APP prompt to operate, until the addition is successful.

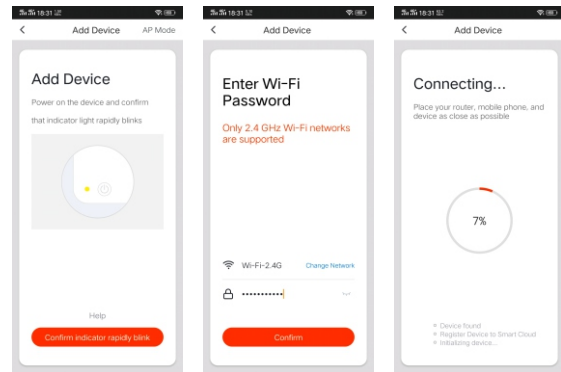


Figure 1

Figure 2

Figure 3

Network Addition Instructions

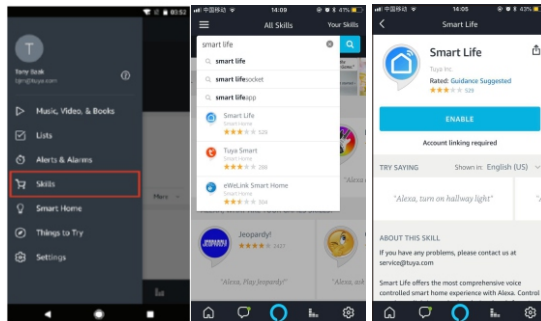
The following smart speakers are supported (continuous update):



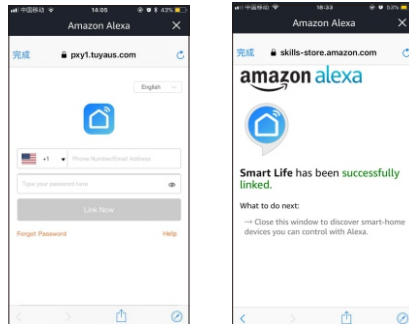
Binding Alexa

Bind the Smart Life account to "Alexa"

- Click on "Skills" in the menu and search for "Smart Life". Select "Smart Life" in the search results and click "ENABLE" to enable the skill.

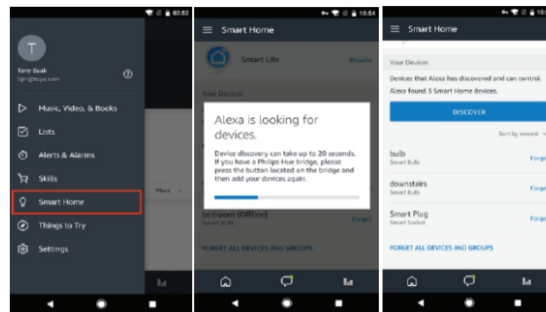


- After clicking the bind account, in the new page, Enter your Smart Life application account and password, and Choose the country of your account correctly, then click "Log in now" to bind your "Smart Life" account. account After the binding is successful, click "OK" to return Main interface.



Control your smart device with Alexa

Before controlling the device, Alexa needs to discover the device first. Click on "DISCOVER" on the Smart Home page to discover the device. The discovered devices will be displayed in the list.



Control Your Smart Device with Voice

- Our smart devices are connected to more than 8 mainstream smart speaker voice controls;
- You can view the supported third-party control categories through the APP-Device Details page;
- Download, install and register the smart speaker APP;
- Bind your Tuya account after logging in to the smart speaker app;
- You can use voice to control your smart devices after setting up your smart devices in the smart speaker app.

Such as: ★ Alexa Turn on the light of the room. (Switching device)
★ Alexa. I am going home. (Customized scenario)
★ Alexa. Open the curtains. (Control curtain switch)

For detailed steps on setting up a smart device in the smart speaker APP, please refer to the introduction in "Tuya Smart" APP;

- Click on the device in the TuyaSmart APP- the device control interface appears;
- Click on the upper right corner of the device control interface the "Device Details" interface appears;
- You can see the supported third-party control details in the "Device Details" interface;
- Click on the smart speaker brand icon you need to know to see the detailed use of this speaker.

Package content

Product *1
User manual *1
Screw *2
Type 86 package size: 100*100*40mm
Type 120 package size: 140*93*43mm

Precautions

- The signal indicator of the device is off before it connects with the network. After connecting with the network, it is blue and bright;
- The status indicator of the device's switch is blue when turned on and white when turned off;
- The device has a slight fever during use, which is a normal phenomenon;
- Please do not disassemble the equipment privately;
- Please contact professional electrician to install before installation. It is forbidden to operate with electricity!

This device complies with Part 15 of the FCC Rules. Operation is subject to the following two conditions:
(1) This device may not cause harmful interference.
(2) This device must accept any interference received, including interference that may cause undesired operation.
Changes or modifications not expressly approved by the party responsible for compliance could void the user's authority to operate the equipment.
Note: This equipment has been tested and found to comply with the limits for a class B digital device, pursuant to Part 15 of the FCC Rules. These limits are designed to provide reasonable protection against harmful interference in a residential installation. This equipment generates uses and can radiate radio frequency energy and, if not installed and used in accordance with the instructions, may cause harmful interference to radio communications. However, there is no guarantee that interference will not occur in a particular installation. If this equipment does cause harmful interference to radio or television reception, which can be determined by turning the equipment off and on, the user is encouraged to try to correct the interference by one or more of the following measures:

- Reorient or relocate the receiving antenna.
- Increase the separation between the equipment and receiver.
- Connect the equipment into an outlet on a circuit different from that to which the receiver is connected.
- Consult the dealer or an experienced radio/TV technician for help.

This equipment should be installed and operated with a minimum distance of 20 cm between the radiator and your body.