



TEST REPORT

APPLICANT : Securus Technologies, LLC
PRODUCT NAME : Tablet
MODEL NAME : EVOTAB
BRAND NAME : SECURUS
FCC ID : 2AZJPEVOTAB
STANDARD(S) : FCC 47 CFR Part 2(2.1093)
: IEEE 1528-2013
RECEIPT DATE : 2025-05-12
TEST DATE : 2025-05-14 to 2025-05-27
ISSUE DATE : 2025-06-17

Edited by:

Pang Siyu

Pang Siyu (Rapporteur)

Approved by:

Gan Yueming

Gan Yueming (Supervisor)

NOTE: This document is issued by Shenzhen Morlab Communications Technology Co., Ltd., the test report shall not be reproduced except in full without prior written permission of the company. The test results apply only to the particular sample(s) tested and to the specific tests carried out which is available on request for validation and information confirmed at our website.





DIRECTORY

1	Statement of Compliance.....	5
2	Technical Information	6
2.1	Applicant and Manufacturer Information	6
2.2	Equipment under Test (EUT) Description	6
2.3	Environment of Test Site	8
3	Specific Absorption Rate (SAR)	9
3.1	Introduction	9
3.2	SAR Definition	9
4	RF Exposure Limits	10
4.1	Uncontrolled Environment	10
4.2	Controlled Environment	10
5	Applied Reference Documents.....	11
6	SAR Measurement System	12
6.1	E-Field Probe	13
6.2	Data Acquisition Electronics (DAE).....	14
6.3	Robot.....	14
6.4	Measurement Server	14
6.5	Light Beam Unit.....	15
6.6	Phantom.....	15
6.7	Device Holder	16
6.8	Data storage and Evaluation	17
6.9	Test Equipment List.....	19
7	Tissue Simulating Liquids	21
8	SAR System Verification.....	23
9	EUT Testing Position	27
9.1	SAR Evaluation to the Mouth/Jaw Regions of the Phantom	27



9.2	Body-Supported Device Configurations	27
9.3	Wireless Router (Hotspot) Configurations.....	28
10	Measurement Procedures.....	30
10.1	Spatial Peak SAR Evaluation	31
10.2	Power Reference Measurement	31
10.3	Area Scan Procedures	31
10.4	Zoom Scan Procedures	32
10.5	SAR Averaged Methods	32
10.6	Power Drift Monitoring	32
11	SAR Test Configuration	33
12	Conducted Output Power	43
13	Carrier Aggregation	43
13.1	LTE Uplink Carrier Aggregation.....	43
13.2	LTE Downlink Carrier Aggregation.....	44
14	Exposure Positions Consideration	47
15	Proximity Sensor Considerations	48
15.1	Proximity Sensor Triggering Distances	48
15.2	Proximity Sensor Coverage	49
15.3	Tablet Tilt Angle Influences to P-Sensor Triggering	49
15.4	Proximity Sensor Power Reduction	50
16	SAR Test Results Summary.....	50
16.1	Test Guidance	50
16.2	Body SAR Data.....	52
16.3	Repeated SAR Assessment	62
17	Simultaneous Transmission Analysis	64
17.1	Simultaneous Transmission Consideration	64
17.2	Simultaneous Transmission Analysis.....	65
17.3	SPLSR Assessment and Analysis	75



18	Measurement Uncertainty.....	91
19	Measurement Conclusion.....	91
	Annex A General Information.....	92
	Annex B Test Setup Photos	
	Annex C Plots of System Performance Check	
	Annex D Plots of Maximum SAR Test Results	
	Annex E Conducted Power	
	Annex F Test Position Consideration	
	Annex G Proximity Sensor Power Reduction	
	Annex H DASY Calibration Certificate	

Change History		
Version	Date	Reason for Change
1.0	2025-06-17	First edition

1 Statement of Compliance

The maximum results of Specific Absorption Rate (SAR) found during test as bellows:

Frequency Band		Highest SAR Summary
		Body (Separation 0mm)
		1g SAR (W/kg)
WCDMA	Band II	1.025
	Band IV	0.940
	Band V	0.982
LTE	Band 7	0.963
	Band 12/17	1.185
	Band 13	1.199
	Band 14	1.025
	Band 18	1.149
	Band 19	1.100
	Band 25/2	1.050
	Band 26/5	1.161
	Band 30	0.858
	Band 41	0.962
	Band 66/4	1.157
	Band 71	1.050
WLAN	2.4GHz WLAN	1.106
	5GHz WLAN	1.062
2.4GHz Band	Bluetooth	0.052

Highest Simultaneous Transmission 1g SAR (W/kg)	1.511	Limit (W/kg): 1.6
--	-------	-------------------

Note:

1. This device is compliance with Specific Absorption Rate (SAR) for general population or uncontrolled exposure limits (1.6 W/kg) specified in FCC 47 CFR part 1 (1.1310) and IEEE C95.1-1991, and had been tested in accordance with the measurement methods and procedures specified in IEEE 1528-2013.
2. For LTE Band 2/4/5/17 are fully covered by LTE Band 25/66/26/12, therefore only LTE Band 12/25/66/26 were tested.
3. The declarations of EUT presented in the report are provided by applicant and/or manufacturer, and the test laboratory is not responsible for the accuracy of the information.



2 Technical Information

Note: Provide by applicant.

2.1 Applicant and Manufacturer Information

Applicant:	Securus Technologies, LLC
Applicant Address:	5360 Legacy Drive, Suite 300, Plano, Texas, United States, 75024
Manufacturer:	Rhino Mobility LLC
Manufacturer Address:	8 The Green, Suite A, Dover, Delaware 19901, USA

2.2 Equipment under Test (EUT) Description

Product Name:	Tablet
EUT No.:	16#, 17#
Hardware Version:	T8006_MB_V1.0
Software Version:	T81R(001)_20250530
Operation Frequency:	WCDMA II: 1850 MHz ~ 1910 MHz WCDMA IV: 1710 MHz ~ 1755 MHz WCDMA V: 824 MHz ~ 849 MHz LTE Band 2: 1850 MHz ~ 1910 MHz LTE Band 4: 1710 MHz ~ 1755 MHz LTE Band 5: 824 MHz ~ 849 MHz LTE Band 7: 2500 MHz ~ 2570 MHz LTE Band 12: 699 MHz ~ 716 MHz LTE Band 13: 777 MHz ~ 787 MHz LTE Band 14: 788 MHz ~ 798 MHz LTE Band 17: 704 MHz ~ 716 MHz LTE Band 18: 815 MHz ~ 830 MHz LTE Band 19: 830 MHz ~ 845 MHz LTE Band 25: 1850 MHz ~ 1915 MHz LTE Band 26: 814 MHz ~ 849 MHz LTE Band 29 (RX): 717 MHz ~ 728 MHz LTE Band 30: 2305 MHz ~ 2315 MHz LTE Band 41: 2496 MHz ~ 2690 MHz LTE Band 66: 1710 MHz ~ 1780 MHz LTE Band 71: 663 MHz ~ 698 MHz



	WLAN 2.4GHz: 2412 MHz ~ 2462 MHz WLAN 5.2GHz: 5180 MHz ~ 5240 MHz WLAN 5.3GHz: 5260 MHz ~ 5320 MHz WLAN 5.5GHz: 5500 MHz ~ 5720 MHz WLAN 5.8GHz: 5745 MHz ~ 5825 MHz Bluetooth: 2402 MHz ~ 2480 MHz NFC: 13.56MHz
Modulation Technology:	WCDMA: QPSK, 16QAM LTE: QPSK, 16QAM, 64QAM 802.11b: DSSS 802.11a/g/n-HT20/HT40: OFDM 802.11ac-VHT20/40/80: OFDM BR+EDR(WCN3988): GFSK (1Mbps), $\pi/4$ -DQPSK (2Mbps), 8-DPSK (3Mbps) BLE(WCN3988): GFSK (1Mbps) BLE(nRF52833): GFSK (1Mbps, 2Mbps) NFC: ASK
Carrier Aggregation:	CA Uplink & Downlink
Antenna Type:	WWAN: PIFA Antenna WLAN: PIFA Antenna Bluetooth: PIFA Antenna NFC: Loop Antenna
SIM Cards Description:	WCDMA+LTE

Note: For more detailed description, please refer to specification or user manual supplied by the applicant and/or manufacturer.



2.3 Environment of Test Site

Temperature:	18°C ~25°C
Humidity:	35%~75% RH

During SAR test, EUT is in Traffic Mode (Channel Allocated) at Normal Voltage Condition. A communication link is set up with a System Simulator (SS) by air link, and a call is established.

The EUT shall use its internal transmitter. The antenna(s), battery and accessories shall be those specified by the Factory. The EUT battery must be fully charged and checked periodically during the test to ascertain uniform power output. If a wireless link is used, the antenna connected to the output of the base station simulator shall be placed at least 50 cm away from the handset.

The signal transmitted by the simulator to the antenna feeding point shall be lower than the output power level of the handset by at least 35 dB.

3 Specific Absorption Rate (SAR)

3.1 Introduction

SAR is related to the rate at which energy is absorbed per unit mass in an object exposed to a radio field. The SAR distribution in a biological body is complicated and is usually carried out by experimental techniques or numerical modeling. The standard recommends limits for two tiers of groups, occupational or controlled and general population or uncontrolled, based on a person's awareness and ability to exercise control over his or her exposure. In general, occupational or controlled exposure limits are higher than the limits for general population or uncontrolled.

3.2 SAR Definition

The SAR definition is the time derivative (rate) of the incremental energy (dW) absorbed by (dissipated in) an incremental mass (dm) contained in a volume element (dv) of a given density (ρ). The equation description is as below:

$$SAR = \frac{d}{dt} \left(\frac{dU}{dm} \right) = \frac{d}{dt} \left(\frac{dU}{\rho dv} \right)$$

SAR is expressed in units of Watts per kilogram (W/kg)

SAR measurement can be either related to the temperature elevation in tissue by

$$SAR = C \left(\frac{\delta T}{\delta t} \right)$$

Where: C is the specific heat capacity, δT is the temperature rise and δt is the exposure duration, or related to the electrical field in the tissue by

$$SAR = \frac{\sigma \cdot E^2}{\rho}$$

Where: σ is the conductivity of the tissue, ρ is the mass density of the tissue and E is the RMS electrical field strength. However for evaluating SAR of low power transmitter, electrical field measurement is typically applied.



4 RF Exposure Limits

4.1 Uncontrolled Environment

Uncontrolled Environments are defined as locations where there is the exposure of individuals who have no knowledge or control of their exposure. The general population/uncontrolled exposure limits are applicable to situations in which the general public may be exposed or in which persons who are exposed as a consequence of their employment may not be made fully aware of the potential for exposure or cannot exercise control over their exposure. Members of the general public would come under this category when exposure is not employment-related; for example, in the case of a wireless transmitter that exposes persons in its vicinity.

Limits for General Population/Uncontrolled Exposure (W/kg)

Type Exposure	Uncontrolled Environment Limit
Spatial Peak SAR (1g cube tissue for head and trunk)	1.6 W/kg
Spatial Peak SAR (10g cube tissue for limbs)	4.0 W/kg
Spatial Peak SAR (1g cube tissue for whole body)	0.08 W/kg

Note:

1. Occupational/Uncontrolled Environments are defined as locations where there is exposure that may be incurred by people who are aware of the potential for exposure (i.e. as a result of employment or occupation).
2. Whole-Body SAR is averaged over the entire body, partial-body SAR is averaged over any 1gram of tissue defined as a tissue volume in the shape of a cube. SAR for hands, wrists, feet and ankles is averaged over any 10 grams of tissue defined as a tissue volume in the shape of a cube.

4.2 Controlled Environment

Controlled Environments are defined as locations where there is exposure that may be incurred by persons who are aware of the potential for exposure, (i.e. as a result of employment or occupation). In general, occupational/controlled exposure limits are applicable to situations in which persons are exposed as a consequence of their employment, who have been made fully aware of the potential for exposure and can exercise control over their exposure. This exposure category is also applicable when the exposure is of a transient nature due to incidental passage through a location where the exposure levels may be higher than the general population/uncontrolled limits, but the exposed person is fully aware of the potential for exposure and can exercise control over his or her exposure by leaving the area or by some other appropriate means.



5 Applied Reference Documents

Leading reference documents for testing:

Identity	Document Title	Remark
FCC 47 CFR Part 2 (2.1093)	Radio Frequency Radiation Exposure valuation: Portable Devices	/
IEEE 1528-2013	IEEE Recommended Practice for Determining the Peak Spatial-Average Specific Absorption Rate (SAR) in the Human Head from Wireless Communications Devices: Measurement Techniques	/
KDB 447498 D01v07	General RF Exposure Guidance	/
KDB 248227 D01v02r02	SAR Measurement Procedures for 802.11 Transmitters	/
KDB 616217 D04 v01r01	SAR Evaluation Considerations for Laptop, Notebook, Notebook and Tablet Computers	/
KDB 865664 D01v01r04	SAR Measurement 100 MHz to 6 GHz	/
KDB 865664 D02v01r02	RF Exposure Reporting	/
KDB 941225 D01v03r01	3G SAR MEAUREMENT PROCEDURES	/
KDB 941225 D05v02r05	SAR Evaluation Consideration for LTE Devices	/
KDB 941225 D06v02r01	SAR Evaluation Procedures For Portable Devices With Wireless Router Capabilities	/
Note: Any additions, deviation, or exclusions from the method shall be noted in the "Remark" .		

6 SAR Measurement System

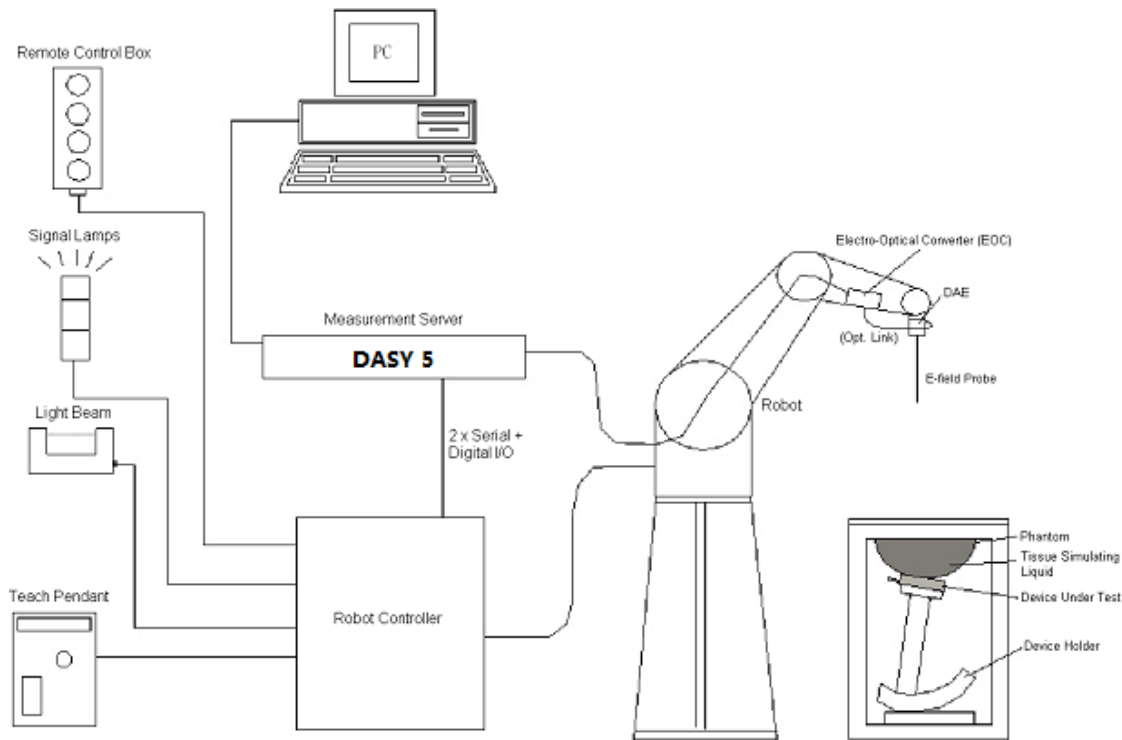


Fig.6.1 SPEAG DASY System Configurations

The DASY system for performance compliance tests is illustrated above graphically. This system consists of the following items:

- A standard high precision 6-axis robot with controller, a teach pendant and software.
- A data acquisition electronic (DAE) attached to the robot arm extension.
- A dosimetric probe equipped with an optical surface detector system.
- The electro-optical converter (EOC) performs the conversion between optical and electrical signals.
- A measurement server performs the time critical tasks such as signal filtering, control of the robot operation and fast movement interrupts.
- A probe alignment unit which improves the accuracy of the probe positioning.
- A computer operating Windows XP.
- DASY software.
- Remote control with teach pendant and additional circuitry for robot safety such as warning lamps, etc.
- The SAM twin phantom.
- A device holder.
- Tissue simulating liquid.
- Dipole for evaluating the proper functioning of the system.

Component details are described in the following sub-sections.

6.1 E-Field Probe

The SAR measurement is conducted with the dosimetric probe (manufactured by SPEAG). The probe is specially designed and calibrated for use in liquid with high permittivity. The dosimetric probe has special calibration in liquid at different frequency. This probe has a built in optical surface detection system to prevent from collision with phantom.

➤ E-Field Probe Specification

<EX3DV4 Probe>


Construction	Symmetrical design with triangular core Built-in shielding against static charges PEEK enclosure material (resistant to organic solvents, e.g., DGBE)	
Frequency	10 MHz to 6 GHz; Linearity: ± 0.2 dB	
Directivity	± 0.3 dB in HSL (rotation around probe axis) ± 0.5 dB in tissue material (rotation normal to probe axis)	
Dynamic Range	10 μ W/g to 100 mW/g; Linearity: ± 0.2 dB	
Dimensions	Overall length: 330 mm (Tip: 20 mm) Tip diameter: 2.5 mm (Body: 12 mm) Typical distance from probe tip to dipole centers: 1 mm	

Fig 6.2 Photo of EX3DV4

➤ E-Field Probe Calibration

Each probe needs to be calibrated according to a dosimetric assessment procedure with accuracy better than $\pm 10\%$. The spherical isotropy shall be evaluated and within ± 0.25 dB. The sensitivity parameters (Norm X, Norm Y and Norm Z), the diode compression parameter (DCP) and the conversion factor (ConvF) of the probe are tested. The calibration data can be referred to annex H of this report.

6.2 Data Acquisition Electronics (DAE)

The Data acquisition electronics (DAE) consists of a highly sensitive electrometer-grade preamplifier with auto-zeroing, a channel and gain-switching multiplexer, a fast 16 bit AD-converter and a command decoder and control logic unit. Transmission to the measurement server is accomplished through an optical downlink for data and status information as well as an optical uplink for commands and the clock. The input impedance of the DAE is 200 MOhm; the inputs are symmetrical and floating. Common mode rejection is above 80 dB.

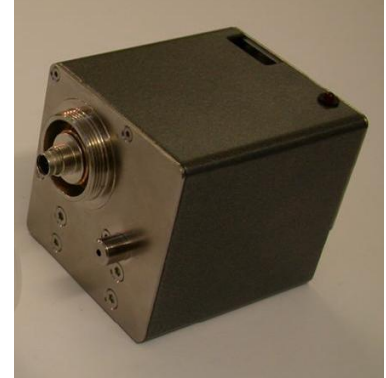


Fig 6.2 Photo of DAE

6.3 Robot

The SPEAG DASY system uses the high precision robots (DASY5: TX60XL) type from Stäubli SA (France). For the 6-axis controller system, the robot controller version (DASY5: CS8c) from Stäubli is used. The Stäubli robot series have many features that are important for our application:

- High precision (repeatability 0.02 mm)
- High reliability (industrial design)
- Low maintenance costs (virtually maintenance free due to direct drive gears; nobelt drives)
- Jerk-free straight movements
- Low ELF interference (motor control fields shielded via the closed metallic construction shields)



Fig. 6.3 Photo of Robot

6.4 Measurement Server

The measurement server is based on a PC/104 CPU board with CPU (DASY 5: 400MHz, Intel Celeron), chip-disk (DASY5: 128 MB), RAM (DASY5: 128 MB). The necessary circuits for communication with the DAE electronic box, as well as the 16 bit AD converter system for optical detection and digital I/O interface are contained on the DASY I/O board, which is directly connected to the PC/104 bus of the CPU board.

The measurement server performs all the real-time data evaluation for field measurements and surface detection, controls robot movements and handles safety operations.



Fig. 6.4 Photo of Server for DASYS5

6.5 Light Beam Unit

The light beam switch allows automatic "tooling" of the probe. During the process, the actual position of the probe tip with respect to the robot arm is measured, as well as the probe length and the horizontal probe offset. The software then corrects all movements, such that the robot coordinates are valid for the probe tip.

The repeatability of this process is better than 0.1 mm. If a position has been taught with an aligned probe, the same position will be reached with another aligned probe within 0.1 mm, even if the other probe has different dimensions. During probe rotations, the probe tip will keep its actual position.



Fig. 6.5 Photo of Light Beam

6.6 Phantom

<SAM Twin Phantom>

Shell Thickness	2 ± 0.2 mm (sagging: <1%) Center ear point: 6 ± 0.2 mm
Filling Volume Dimensions	Approx. 25 liters Length: 1000 mm; Width: 500 mm; Height: adjustable feet
Measurement Areas	Left Head, Right Head, Flat phantom



Fig. 6.6 Photo of SAM Phantom

The bottom plate contains three pair of bolts for locking the device holder. The device holder positions are adjusted to the standard measurement positions in the three sections. A white cover is provided to tap the phantom during off-periods to prevent water evaporation and changes in the liquid parameters. On the phantom top, three reference markers are provided to identify the

phantom position with respect to the robot.

6.7 Device Holder

<Device Holder for SAM Twin Phantom>

The SAR in the phantom is approximately inversely proportional to the square of the distance between the source and the liquid surface. For a source at 5 mm distance, a positioning uncertainty of ± 0.5 mm would produce a SAR uncertainty of ± 20 %. Accurate device positioning is therefore crucial for accurate and repeatable measurements. The positions in which the devices must be measured are defined by the standards.

The DASY device holder is designed to cope with different positions given in the standard. It has two scales for the device rotation (with respect to the body axis) and the device inclination (with respect to the line between the ear reference points). The rotation center for both scales is the ear reference point (ERP).

Thus the device needs no repositioning when changing the angles.

The DASY device holder is constructed of low-loss POM material having the following dielectric parameters: relative permittivity $\epsilon = 3$ and loss tangent $\delta = 0.02$. The amount of dielectric material has been reduced in the closest vicinity of the device, since measurements have suggested that the influence of the clamp on the test results could thus be lowered.

<Laptop Extension Kit>

The extension is lightweight and made of POM, acrylic glass and foam. It fits easily on the upper part of the mounting device in place of the phone positioned. The extension is fully compatible with the SAM Twin and ELI phantoms.



Fig 6.7 Device Holder

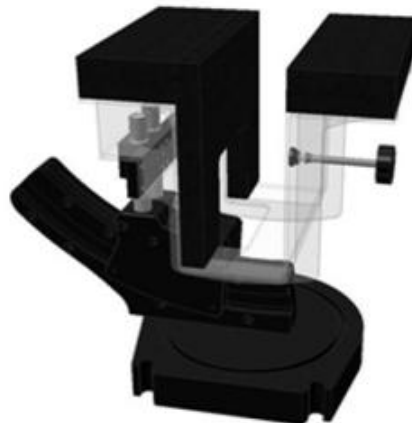


Fig 6.8 Laptop Extension Kit

6.8 Data storage and Evaluation

➤ Data Storage

The DASY software stores the assessed data from the data acquisition electronics as raw data (in microvolt readings from the probe sensors), together with all the necessary software parameters for the data evaluation (probe calibration data, liquid parameters and device frequency and modulation data) in measurement files. The post-processing software evaluates the desired unit and format for output each time the data is visualized or exported. This allows verifications of the complete software setup even after the measurement and allows correction of erroneous parameter settings. For example, if a measurement has been performed with an incorrect crest factor parameter in the device setup, the parameter can be corrected afterwards and the data can be reevaluated.

The measured data can be visualized or exported in different units or formats, depending on the selected probe type (e.g., [V/m], [mW/g]). Some of these units are not available in certain situations or give meaningless results, e.g., a SAR-output in a non-lose media, will always be zero. Raw data can also be exported to perform the evaluation with other software packages.

➤ Data Evaluation

The DASY post-processing software (SEMCAD) automatically executes the following procedures to calculate the field units from the microvolt readings at the probe connector. The parameters used in the evaluation are stored in the configuration modules of the software:

Probe Parameters:	- Sensitivity	Norm _i , a _{i0} , a _{i1} , a _{i2}
	- Conversion	ConvF _i
	- Diode compression point	dcp _i
Device Parameters:	- Frequency	f
	- Crest	cf
Media Parameters:	- Conductivity	σ
	- Density	ρ

These parameters must be set correctly in the software. They can be found in the component documents or they can be imported into the software from the configuration files issued for the DASY components. In the direct measuring mode of the multi-meter option, the parameters of the actual system setup are used. In the scan visualization and export modes, the parameters stored in the corresponding document files are used.

The first step of the evaluation is a linearization of the filtered input signal to account for the compression characteristics of the detector diode. The compensation depends on the input signal, the diode type and the DC-transmission factor from the diode to the evaluation electronics. If the

exciting field is pulsed, the crest factor of the signal must be known to correctly compensate for peak power.

The formula for each channel can be given as:

$$V_i = U_i + U_i^2 \cdot \frac{cf}{dcp_i}$$

With V_i = compensated signal of channel i, (i = x, y, z)

U_i = input signal of channel i, (i = x, y, z)

cf = crest factor of exciting field (DASY parameter)

dcpⁱ = diode compression point (DASY parameter)

From the compensated input signals, the primary field data for each channel can be evaluated:

$$\text{E- Field Probes: } E_i = \sqrt{\frac{V_i}{\text{Norm}_i \cdot \text{ConvF}}}$$

$$\text{H-Field Probes: } H_i = \sqrt{V_i} \cdot \frac{a_{i0} + a_{i1}f + a_{i2}f^2}{f}$$

With V_i = compensated signal of channel i, (i = x, y, z)

Norm_i = sensor sensitivity of channel i, (i = x, y, z), $\mu\text{V}/(\text{V/m})^2$

ConvF = sensitivity enhancement in solution

a_{ij} = sensor sensitivity factors for H-field probes

f = carrier frequency (GHz)

E_i = electric field strength of channel i in V/m

H_i = magnetic field strength of channel i in A/m

The RSS value of the field components gives the total field strength (Hermitian magnitude):

$$E_{\text{tot}} = \sqrt{E_x^2 + E_y^2 + E_z^2}$$

The primary field data are used to calculate the derived field units.

$$\text{SAR} = E_{\text{tot}}^2 \cdot \frac{\sigma}{\rho \cdot 1000}$$

With

SAR = local specific absorption rate in mW/g

E_{tot} = total field strength in V/m

σ = conductivity in (mho/m) or (Siemens/m)

ρ = equipment tissue density in g/cm³

Note that the density is set to 1, to account for actual head tissue density rather than the density of the tissue simulating liquid.



6.9 Test Equipment List

Manufacturer	Name of Equipment	Type/Model	Serial No./ SW Version	Calibration	
				Last Cal.	Due Date
SPEAG	750MHz System Validation Kit	D750V3	1223	2022.08.22	2025.08.21
SPEAG	900MHz System Validation Kit	D900V2	1d064	2024.10.21	2027.10.20
SPEAG	1800MHz System Validation Kit	D1800V2	2d158	2024.10.21	2027.10.20
SPEAG	2000MHz System Validation Kit	D2000V2	1050	2024.10.22	2027.10.21
SPEAG	2300MHz System Validation Kit	D2300V2	1107	2024.10.21	2027.10.20
SPEAG	2450MHz System Validation Kit	D2450V2	805	2024.10.22	2027.10.21
SPEAG	2600MHz System Validation Kit	D2600V2	1198	2024.10.23	2027.10.22
SPEAG	5000MHz System Validation Kit	D5GHzV2	1176	2024.10.22	2027.10.21
SPEAG	DOSIMETRIC ASSESSMENT SYSTEM	DASY52	52.10.4.1527	NCR	NCR
SPEAG	Dosimetric E-Field Probe	EX3DV4	3823	2024.11.11	2024.11.10
SPEAG	Data Acquisition Electronics	DAE4	1324	2024.07.05	2025.07.04
SPEAG	ELI V8.0 (20deg probe tilt)	QD OVA 004 Ax	N/A	NCR	NCR
SPEAG	Phone Positioner	N/A	N/A	NCR	NCR
R&S	Network Emulator	CMW500	165755	2025.01.06	2026.01.05
Anritsu	Network Emulator	MT8820C	6201274521	2025.01.06	2026.01.05
Anritsu	Network Emulator	MT8821C	6261830572	2025.01.06	2026.01.05
Agilent	Network Analyzer	E5071B	MY42404762	2025.01.06	2026.01.05
SPEAG	Dielectric Assessment KIT	DAK-3.5	1279	2025.03.18	2026.03.17
mini-circuits	Amplifier	ZHL-42W+	608501717	NCR	NCR
mini-circuits	Amplifier	ZVE-8G+	754401735	NCR	NCR
Agilent	Signal Generator	N5182B	MY53050509	2024.09.11	2025.09.10
R&S	Power Sensor	NRP8S	103215	2025.01.06	2026.01.05
Agilent	Power Meter	E4416A	MY45102093	2024.09.11	2025.09.10
R&S	Power Sensor	NRP8S	103240	2025.01.06	2026.01.05
Anritsu	Power Meter	E4418B	GB43318055	2024.05.30	2025.05.29
Agilent	Dual Directional Coupler	778D	50422	NA	NA
MCL	Attenuation	351-218-010	N/A	NA	NA
R&S	Spectrum Analyzer	N9030A	MY54170556	2024.09.18	2025.09.17
KTJ	Thermo meter	TA298	N/A	2024.11.20	2025.11.19
N/A	Tissue Simulating Liquids	HBBL600-10000V6		24H	



Note:

1. The calibration certificate of DASY can be referred to annex H of this report.
2. Referring to KDB 865664 D01v01r04, the dipole calibration interval can be extended to 3 years with justification. The dipoles are also not physically damaged, or repaired during the interval.
3. The Insertion Loss calibration of Dual Directional Coupler and Attenuator were characterized via the network analyzer and compensated during system check.
4. The dielectric probe kit was calibrated via the network analyzer, with the specified procedure (calibrated in pure water) and calibration kit (standard) short circuit, before the dielectric measurement. The specific procedure and calibration kit are provided by SPEAG.
5. In system check we need to monitor the level on the power meter, and adjust the power amplifier level to have precise power level to the dipole; the measured SAR will be normalized to 1 W input power according to the ratio of 1 W to the input power to the dipole. For system check, the calibration of the power amplifier is deemed not critically required for correct measurement; the power meter is critical and we do have calibration for it
6. Attenuator insertion loss is calibrated by the network Analyzer, which the calibration is valid, before system check.
7. N.C.R means No Calibration Requirement.

7 Tissue Simulating Liquids

For the measurement of the field distribution inside the SAM phantom with DASY, the phantom must be filled with around 25 liters of homogeneous body tissue simulating liquid. For head SAR testing, the liquid height from the ear reference point (ERP) of the phantom to the liquid top surface is larger than 15 cm, which is shown in Fig. 7.1, for body SAR testing, the liquid height from the centre of the flat phantom to liquid top surface is larger than 15 cm, which is shown in Fig. 7.2.

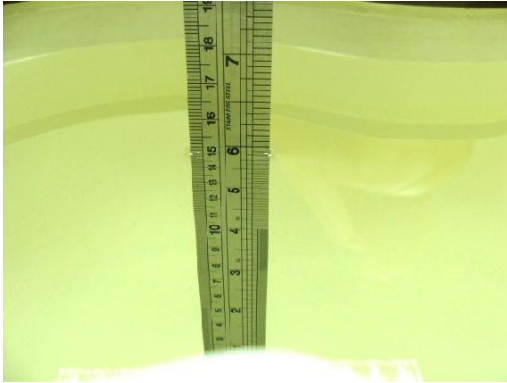


Fig 7.1 Photo of Liquid Height for Head SAR



Fig 7.2 Photo of Liquid Height for Body SAR

The following table gives the recipes for tissue simulating liquids

Frequency (MHz)	Water (%)	Sugar (%)	Cellulose (%)	Salt (%)	Preventol (%)	DGBE (%)	Conductivity (σ)	Permittivity (ϵ_r)
Head								
750	41.1	57.0	0.2	1.4	0.2	0	0.89	41.9
835	40.3	57.9	0.2	1.4	0.2	0	0.90	41.5
1800,1900,2000	55.2	0	0	0.3	0	44.5	1.40	40.0
2450	55.0	0	0	0	0	45.0	1.80	39.2
2600	54.8	0	0	0.1	0	45.1	1.96	39.0

Simulating Liquid for 5GHz, Manufactured by SPEAG

Ingredients	(% by weight)
Water	64~78%
Mineral oil	11~18%
Emulsifiers	9~15%
Additives and Salt	2~3%

The relative permittivity and conductivity of the tissue material should be within $\pm 5\%$ of the values given in the table below recommended by the FCC OET 65 supplement C and RSS 102 Issue 5.

Target Frequency (MHz)	Head		Body	
	ϵ_r	σ (S/m)	ϵ_r	σ (S/m)
150	52.3	0.76	61.9	0.80
300	45.3	0.87	58.2	0.92
450	43.5	0.87	56.7	0.94



835	41.5	0.90	55.2	0.97
900	41.5	0.97	55.0	1.05
915	41.5	0.98	55.0	1.06
1450	40.5	1.20	54.0	1.30
1610	40.3	1.29	53.8	1.40
1800-2000	40.0	1.40	53.3	1.52
2450	39.2	1.80	52.7	1.95
3000	38.5	2.40	52.0	2.73
5800	35.3	5.27	48.2	6.00

(ϵ = relative permittivity, σ = conductivity and ρ = 1000 kg/m³)

The dielectric parameters of liquids were verified prior to the SAR evaluation using a Speag Dielectric Probe Kit and an Agilent Network Analyzer.

The following table shows the measuring results for simulating liquid.

Table 1: Dielectric Performance of Tissue Simulating Liquid

Frequency (MHz)	Tissue Type	Liquid Temp. (°C)	Conductivity (σ)	Conductivity Target (σ)	Delta (σ) (%)	Limit (%)	Date
750	HSL	22.2	0.914	0.89	2.70	±5	2025/5/14
750	HSL	22.3	0.909	0.89	2.13	±5	2025/5/21
900	HSL	22.3	0.959	0.97	-1.13	±5	2025/5/17
1800	HSL	22.5	1.397	1.40	-0.21	±5	2025/5/13
2000	HSL	22.1	1.423	1.40	1.64	±5	2025/5/15
2300	HSL	22.1	1.634	1.67	-2.16	±5	2025/5/16
2450	HSL	22.1	1.815	1.80	0.83	±5	2025/5/20
2600	HSL	22.3	2.005	1.96	2.30	±5	2025/5/22
2600	HSL	22.5	2.014	1.96	2.76	±5	2025/5/23
5250	HSL	22.3	4.715	4.71	0.11	±5	2025/5/24
5600	HSL	22.1	5.125	5.07	1.08	±5	2025/5/26
5750	HSL	22.1	5.188	5.22	-0.61	±5	2025/5/27

Frequency (MHz)	Tissue Type	Liquid Temp. (°C)	Permittivity (ϵ r)	Permittivity Target (ϵ r)	Delta (ϵ r) (%)	Limit (%)	Date
750	HSL	22.2	41.112	41.90	-1.88	±5	2025/5/14
750	HSL	22.3	41.736	41.90	-0.39	±5	2025/5/21
900	HSL	22.3	40.651	41.50	-2.05	±5	2025/5/17
1800	HSL	22.5	40.375	40.00	0.94	±5	2025/5/13
2000	HSL	22.1	39.781	40.00	-0.55	±5	2025/5/15
2300	HSL	22.1	39.351	39.50	-0.38	±5	2025/5/16
2450	HSL	22.1	38.811	39.20	-0.99	±5	2025/5/20
2600	HSL	22.3	38.548	39.00	-1.16	±5	2025/5/22



2600	HSL	22.5	38.411	39.00	-1.51	±5	2025/5/23
5250	HSL	22.3	35.326	35.95	-1.74	±5	2025/5/24
5600	HSL	22.1	35.819	35.50	0.90	±5	2025/5/26
5750	HSL	22.1	34.353	35.35	-2.82	±5	2025/5/27

Note:

According to April 2019 TCB Workshop that FCC has permitted the use of single head-tissue simulating liquid specified in IEC 62209-1 for all SAR tests.

8 SAR System Verification

Each DASY system is equipped with one or more system validation kits. These units, together with the predefined measurement procedures within the DASY software, enable the user to conduct the system performance check and system validation. System validation kit includes a dipole, tripod holder to fix it underneath the flat phantom and a corresponding distance holder.

➤ System Validation

According to FCC KDB 865664 D02, SAR system verification is required to confirm measurement accuracy. The SAR systems (including SAR probes, system components and software versions) used for this device were validated against its performance specifications prior to the SAR measurements. Reference dipoles are used with the required tissue-equivalent media for system validation, according to the procedures outlined in FCC KDB 865664 D01 and IEEE 1528-2013. Since SAR probe calibrations are frequency dependent, each probe calibration point must be validated at a frequency within the valid frequency range of the probe calibration point, using the system that normally operates with the probe for routine SAR measurements and according to the required tissue-equivalent media. A tabulated summary of the system validation status, measurement frequencies, SAR probes, calibrated signal type(s) and tissue dielectric parameters has been included.

➤ Purpose of System Performance Check

The system performance check verifies that the system operates within its specifications. System and operator errors can be detected and corrected. It is recommended that the system performance check be performed prior to any usage of the system in order to guarantee reproducible results. The system performance check uses normal SAR measurements in a simplified setup with a well characterized source. This setup was selected to give a high sensitivity to all parameters that might fail or vary over time. The system check does not intend to replace the calibration of the components, but indicates situations where the system uncertainty is exceeded due to drift or failure.

➤ System Setup

In the simplified setup for system evaluation, the EUT is replaced by a calibrated dipole and the power source is replaced by a continuous wave that comes from a signal generator. The calibrated dipole must be placed beneath the flat phantom section of the SAM twin phantom with the correct distance holder. The distance holder should touch the phantom surface with a light pressure at the reference marking and be oriented parallel to the long side of the phantom. The equipment setup is shown below:



Fig 8.1 Photo of Dipole Setup

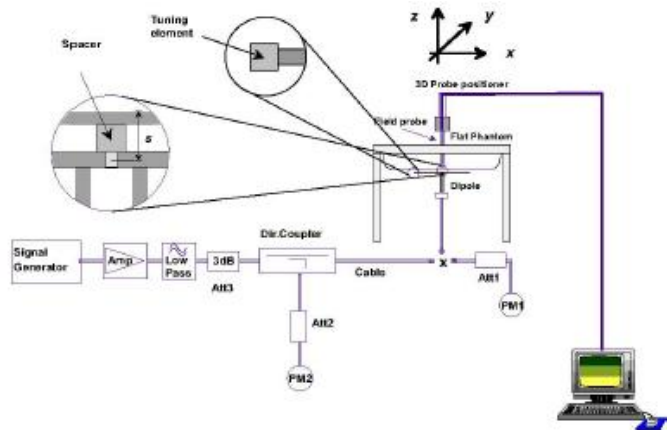


Fig 8.2 System Setup for System Evaluation

➤ System Verification Results

Comparing to the original SAR value provided by SPEAG, the verification data should be within its specification of 10%. Below table shows the target SAR and measured SAR after normalized to 1W input power. The table as below indicates the system performance check can meet the variation criterion and the plots can be referred to annex C of this report.

<Validation Setup>

Frequency (MHz)	Input Power (mW)	Dipole S/N	Probe S/N	DAE S/N
750	250	D750V3-1223	3823	1324
900	250	D900V2-1d064	3823	1324
1800	250	D1800V2-2d158	3823	1324
2000	250	D2000V2-1050	3823	1324
2300	250	D2300V2-1107	3823	1324
2450	250	D2450V2-805	3823	1324
2600	250	D2600V2-1198	3823	1324
5250	100	D5GHzV2-1176-5250	3823	1324
5600	100	D5GHzV2-1176-5600	3823	1324
5750	100	D5GHzV2-1176-5750	3823	1324



Frequency (MHz)	Tissue Type	Conductivity (σ)	Permittivity (ϵ_r)	CW Signal Validation		
				Sensitivity	Probe Linearity	Probe Isotropy
750	HSL	0.851	42.43	PASS	PASS	PASS
835	HSL	0.898	41.88	PASS	PASS	PASS
1750	HSL	1.386	39.91	PASS	PASS	PASS
1800	HSL	1.449	41.26	PASS	PASS	PASS
1900	HSL	1.435	39.65	PASS	PASS	PASS
2000	HSL	1.451	39.42	PASS	PASS	PASS
2300	HSL	1.764	38.99	PASS	PASS	PASS
2450	HSL	1.863	38.85	PASS	PASS	PASS
2600	HSL	1.973	38.58	PASS	PASS	PASS
5250	HSL	4.528	35.32	PASS	PASS	PASS
5600	HSL	4.905	34.89	PASS	PASS	PASS
5750	HSL	5.077	34.28	PASS	PASS	PASS

Frequency (MHz)	Tissue Type	Conductivity (σ)	Permittivity (ϵ_r)	Modulation Signal Validation		
				Mod. Type	Duty Factor	PAR
750	HSL	0.851	42.43	N/A	N/A	N/A
835	HSL	0.898	41.88	GMSK	PASS	N/A
1750	HSL	1.386	39.91	N/A	N/A	N/A
1800	HSL	1.449	41.26	N/A	N/A	N/A
1900	HSL	1.435	39.65	GMSK	PASS	N/A
2000	HSL	1.451	39.42	GMSK	PASS	N/A
2300	HSL	1.764	38.99	OFDM	PASS	PASS
2450	HSL	1.863	38.85	OFDM	PASS	PASS
2600	HSL	1.973	38.58	TDD	PASS	N/A
5250	HSL	4.528	35.32	OFDM	N/A	PASS
5600	HSL	4.905	34.89	OFDM	N/A	PASS
5750	HSL	5.077	34.28	OFDM	N/A	PASS



<Validation Results>

Date	Frequency (MHz)	Tissue Type	Measured 1g SAR (W/kg)	Targeted 1g SAR (W/kg)	Normalized 1g SAR (W/kg)	Deviation (%)
2025/5/14	750	HSL	2.16	8.54	8.64	1.17
2025/5/21	750	HSL	2.08	8.54	8.32	-2.58
2025/5/17	900	HSL	2.93	10.90	11.72	7.52
2025/5/13	1800	HSL	9.69	39.20	38.76	-1.12
2025/5/15	2000	HSL	9.81	41.40	39.24	-5.22
2025/5/16	2300	HSL	13.15	48.80	52.6	7.79
2025/5/20	2450	HSL	13.65	52.80	54.6	3.41
2025/5/22	2600	HSL	14.57	55.90	58.28	4.26
2025/5/23	2600	HSL	14.32	55.90	57.28	2.47
2025/5/24	5250	HSL	7.86	77.30	78.6	1.68
2025/5/26	5600	HSL	8.95	82.40	89.5	8.62
2025/5/27	5750	HSL	7.96	77.20	79.6	3.11

Date	Frequency (MHz)	Tissue Type	Measured 10g SAR (W/kg)	Targeted 10g SAR (W/kg)	Normalized 10g SAR (W/kg)	Deviation (%)
2025/5/14	750	HSL	1.48	5.57	5.92	6.28
2025/5/21	750	HSL	1.39	5.57	5.56	-0.18
2025/5/17	900	HSL	1.92	7.00	7.68	9.71
2025/5/13	1800	HSL	5.36	20.70	21.44	3.57
2025/5/15	2000	HSL	5.33	21.00	21.32	1.52
2025/5/16	2300	HSL	6.13	23.20	24.52	5.69
2025/5/20	2450	HSL	6.63	24.50	26.52	8.24
2025/5/22	2600	HSL	6.69	24.90	26.76	7.47
2025/5/23	2600	HSL	6.71	24.90	26.84	7.79
2025/5/24	5250	HSL	2.25	21.50	22.5	4.65
2025/5/26	5600	HSL	2.29	22.80	22.9	0.44
2025/5/27	5750	HSL	2.28	21.20	22.8	7.55

Note: System checks the specific test data please see annex C.

9 EUT Testing Position

This EUT was tested in four different positions. They are Bottom Face/Edge 1/Edge 2/ Edge 4 of the EUT with phantom 0 mm gap, as illustrated below, please refer to annex B for the test setup photos.

9.1 SAR Evaluation to the Mouth/Jaw Regions of the Phantom

Antennas located near the bottom of a phone may require SAR measurements around the mouth and jaw regions of the SAM head phantom. This typically applies to clam-shell style phones that are generally longer in the unfolded normal use positions or to certain older style long rectangular phones.

Under these circumstances, the following procedures apply, adopted from the FCC guidance on SAR handsets document FCC KDB Publication 648474 D04v01r03. The SAR required in these regions of SAM should be measured using a flat phantom. The phone should be positioned with a separation distance of 4 mm between the ear reference point (ERP) and the outer surface of the flat phantom shell. While maintaining this distance at the ERP location, the low (bottom) edge of the phone should be lowered from the phantom to establish the same separation distance between the peak SAR locations identified by the truncated partial SAR distribution measured with the SAM phantom. The distance from the peak SAR location to the phone is determined by the straight line passing perpendicularly through the phantom surface. When it is not feasible to maintain 4 mm separation at the ERP while also establishing the required separation at the peak SAR location, the top edge of the phone will be allowed to touch the phantom with a separation < 4 mm at the ERP. The phone should not be tilted to the left or right while placed in this inclined position to the flat phantom.

9.2 Body-Supported Device Configurations

According to KDB 616217 section 4.3, SAR should be separately assessed with each surface and separation distance positioned against the flat phantom that correspond to the intended use as specified by the manufacturer. The antennas in tablets are typically located near the back (bottom) surface and/or along the edges of the devices; therefore, SAR evaluation is required for these configurations. Exposures from antennas through the front (top) surface of the display section of a full-size tablet, away from the edges, are generally limited to the user's hands. Exposures to hands for typical consumer transmitters used in tablets are not expected to exceed the extremity SAR limit; therefore, SAR evaluation for the front surface of tablet display screens are generally not necessary, except for tablets that are designed to require continuous operations with the hand(s) next to the antenna(s).

- To position the device parallel to the phantom surface with either keypad up or down.
- To adjust the device parallel to the flat phantom.

- To adjust the distance between the device surface and the flat phantom to 0 mm.
- When each surface is measurement, the SAR Test Exclusion Threshold in KDB 447498 should be applied.

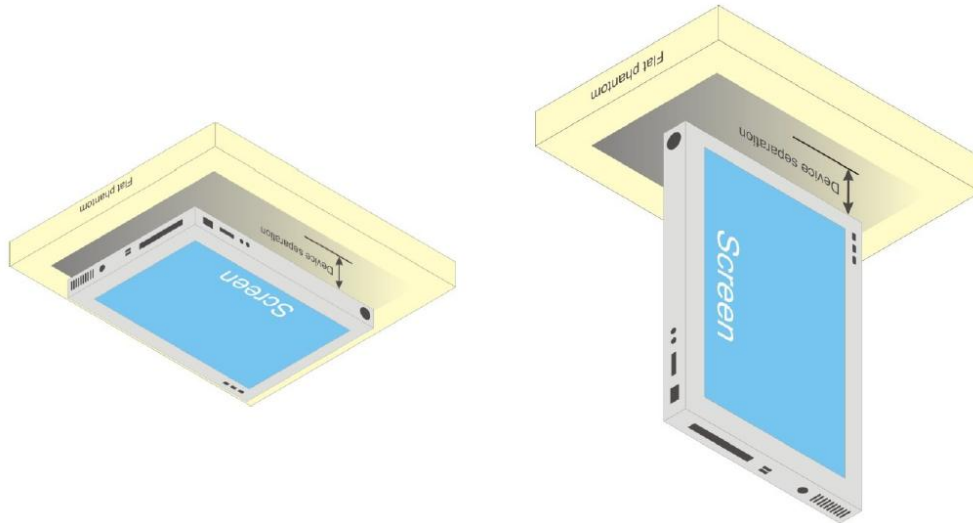


Fig.9.5 Illustration for Body Position

9.3 Wireless Router (Hotspot) Configurations

Some battery-operated handsets have the capability to transmit and receive internet connectivity through simultaneous transmission of WIFI in conjunction with a separate licensed transmitter. The FCC has provided guidance in KDB Publication 941225 D06 where SAR test considerations for handsets ($L \times W \geq$

9 cm x 5 cm) are based on a composite test separation distance of 10 mm from the front, back and edges of the device with antennas 2.5 cm or closer to the edge of the device, determined from general mixed use conditions for this type of devices. Since the hotspot SAR results may overlap with the body-worn accessory SAR requirements, the more conservative configurations can be considered, thus excluding some body-worn accessory SAR tests.

When the user enables the personal wireless router functions for the handset, actual operations include simultaneous transmission of both the WIFI transmitter and another licensed transmitter. Both transmitters often do not transmit at the same transmitting frequency and thus cannot be evaluated for SAR under actual use conditions. Therefore, SAR must be evaluated for each frequency transmission and mode separately and summed with the WIFI transmitter according to KDB 648474 publication procedures. The “Portable Hotspot” feature on the handset was NOT activated, to ensure the SAR measurements were evaluated for a single transmission frequency RF signal.

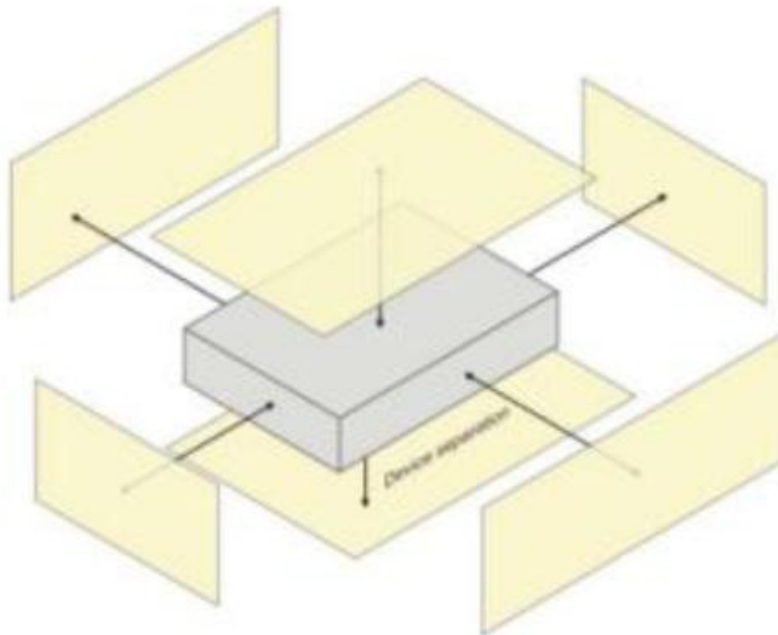


Fig.9.6 Illustration for Hotspot Position

10 Measurement Procedures

The measurement procedures are as follows:

<Conducted power measurement>

- For WWAN power measurement, use base station simulator to configure EUT WWAN transition in conducted connection with RF cable, at maximum power in each supported wireless interface and frequency band.
- Read the WWAN RF power level from the base station simulator.
- For WLAN/BT power measurement, use engineering software to configure EUT WLAN/BT continuously transmission, at maximum RF power in each supported wireless interface and frequency band.
- Connect EUT RF port through RF cable to the power meter or spectrum analyzer, and measure WLAN/BT output power.

<Conducted power measurement>

- Use base station simulator to configure EUT WWAN transmission in radiated connection, and engineering software to configure EUT WLAN/BT continuously transmission, at maximum RF power, in the highest power channel.
- Place the EUT in positions as annex B demonstrates.
- Set scan area, grid size and other setting on the DASY software.
- Measure SAR results for the highest power channel on each testing position.
- Find out the largest SAR result on these testing positions of each band.
- Measure SAR results for other channels in worst SAR testing position if the Reported SAR or highest power channel is larger than 0.8 W/kg.

According to the test standard, the recommended procedure for assessing the peak spatial-average SAR value consists of the following steps:

- Power reference measurement.
- Area scan.
- Zoom scan.
- Power drift measurement.



10.1 Spatial Peak SAR Evaluation

The procedure for spatial peak SAR evaluation has been implemented according to the test standard. It can be conducted for 1g and 10g, as well as for user-specific masses. The DASY software includes all numerical procedures necessary to evaluate the spatial peak SAR value.

The base for the evaluation is a “cube” measurement. The measured volume must include the 1g and 10 g cubes with the highest averaged SAR values. For that purpose, the center of the measured volume is aligned to the interpolated peak SAR value of a previously performed area scan.

The entire evaluation of the spatial peak values is performed within the post-processing engine (SEMCAD). The system always gives the maximum values for 1g and 10g cubes. The algorithm to find the cube with highest averaged SAR is divided into the following stages:

- Extraction of the measured data (grid and values) from the Zoom Scan.
- Calculation of the SAR value at every measurement point based on all stored data (A/D values and measurement parameters).
- Generation of a high-resolution mesh within the measured volume.
- Interpolation of all measured values from the measurement grid to the high-resolution grid
- Extrapolation of the entire 3-D field distribution to the phantom surface over the distance from sensor to surface
- Calculation of the averaged SAR within masses of 1g and 10g.

10.2 Power Reference Measurement

The Power Reference Measurement and Power Drift Measurement are for monitoring the power drift of the device under test in the batch process. The minimum distance of probe sensors to surface determines the closest measurement point to phantom surface. This distance cannot be smaller than the distance of sensor calibration points to probe tip as defined in the probe properties.

10.3 Area Scan Procedures

Area scans are defined prior to the measurement process being executed with a user defined variable spacing between each measurement point (integral) allowing low uncertainty measurements to be conducted. Scans defined for FCC applications utilize a 10mm^2 step integral, with 1mm interpolation used to locate the peak SAR area used for zoom scan assessments.



When an Area Scan has measured all reachable points, it computes the field maxima found in the scanned area, within a range of the global maximum. The range (in dB) is specified in the standards for compliance testing.

10.4 Zoom Scan Procedures

Zoom Scans are used to assess the peak spatial SAR values within a cubic averaging volume containing 1 g and 10 g of simulated tissue. A density of 1000 kg/m^3 is used to represent the head and body tissue density and not the phantom liquid density, in order to be consistent with the definition of the liquid dielectric properties, i.e. the side length of the 1g cube is 10mm, with the side length of the 10 g cube 21,5mm. The zoom scan integer steps can be user defined so as to reduce uncertainty, but normal practice for typical test applications utilize a physical step of 5x5x7 (8mmx8mmx5mm) providing a volume of 32mm in the X & Y axis, and 30mm in the Z axis.

10.5 SAR Averaged Methods

In DASy, the interpolation and extrapolation are both based on the modified Quadratic Sheppard's method. The interpolation scheme combines a least-square fitted function method and a weighted average method which are the two basic types of computational interpolation and approximation.

Extrapolation routines are used to obtain SAR values between the lowest measurement points and the inner phantom surface. The extrapolation distance is determined by the surface detection distance and the probe sensor offset. The uncertainty increases with the extrapolation distance. To keep the uncertainty within 1% for the 1g and 10g cubes, the extrapolation distance should not be larger than 5 mm.

10.6 Power Drift Monitoring

All SAR testing is under the EUT install full charged battery and transmit maximum output power. In DASy measurement software, the power reference measurement and power drift measurement procedures are used for monitoring the power drift of EUT during SAR test. Both these procedures measure the field at a specified reference position before and after the SAR testing. The software will calculate the field difference in dB. If the power drifts more than 5%, the SAR will be retested.

11 SAR Test Configuration

<WCDMA Mode>

Summary of UMTS conducted power measurement:

1. The 3G SAR test reduction procedure is applied, when the maximum output power and tune-up tolerance specified for production units in a secondary mode is $\leq \frac{1}{4}$ dB higher than the primary mode, SAR measurement is not required for the secondary mode.
2. The following tests were conducted according to the test requirements outlines in 3GPP TS 34.121 specification.
3. The procedures in KDB 941225 D01v03r01 are applied for 3GPP Rel. 6 HSPA to configure the device in the required sub-test mode(s) to determine SAR test exclusion.
4. For HSPA+ devices supporting 16 QAM in the uplink, power measurements procedure is according to the configurations in Table C.11.1.4 of 3GPP TS 34.121-1.
5. Per KDB 941225 D01v03r01, RMC 12.2kbps setting is used to evaluate SAR. The maximum output power and tune-up tolerance specified for production units in HSDPA / HSUPA / DC-HSDPA / HSPA+ is $\leq \frac{1}{4}$ dB higher than RMC 12.2Kbps or when the highest reported SAR of the RMC12.2Kbps is scaled by the ratio of specified maximum output power and tune-up tolerance of HSDPA / HSUPA / DC-HSDPA / HSPA+ to RMC12.2Kbps and the adjusted SAR is ≤ 1.2 W/kg, SAR measurement is not required for HSDPA / HSUPA / DC-HSDPA / HSPA+, and according to the following RF output power, the output power results of the secondary modes (HSDPA / HSUPA / DC-HSDPA / HSPA+) are less than $\frac{1}{4}$ dB higher than the primary modes; therefore, SAR measurement is not required for HSDPA / HSUPA / DC-HSDPA / HSPA+.
6. A fixed level power reduction is applied for WCDMA Band II when handset open Hotspot mode, the power reduction triggered.

HSDPA Setup Configuration

Sub-test	β_c	β_d	β_d (SF)	β_c/β_d	$\beta_{hs}^{(1)}$	CM (dB) ⁽²⁾
1	2/15	15/15	64	2/15	4/15	0.0
2	12/15 ⁽³⁾	15/15 ⁽³⁾	64	12/15 ⁽³⁾	24/15	1.0
3	15/15	8/15	64	15/8	30/15	1.5
4	15/15	4/15	64	15/4	30/15	1.5

Note 1: Δ_{ACK} , Δ_{NACK} and $\Delta_{CQI} = 8 \Leftrightarrow A_{hs} = \beta_{hs}/\beta_c = 30/15 \Leftrightarrow \beta_{hs} = 30/15 * \beta_c$
Note 2: CM = 1 for $\beta_c/\beta_d = 12/15$, $\beta_{hs}/\beta_c = 24/15$.
Note 3: For subtest 2 the β_c/β_d ratio of 12/15 for the TFC during the measurement period (TF1, TF0) is achieved by setting the signaled gain factors for the reference TFC (TF1, TF1) to $\beta_c = 11/15$ and $\beta_d = 15/15$.

HSUPA Setup Configuration

Sub-test	β_c	β_d	β_d (SF)	β_c/β_d	$\beta_{hs}^{(1)}$	β_{ec}	β_{ed}	β_{ed} (SF)	β_{ed} (codes)	CM ⁽²⁾ (dB)	MPR (dB)	AG ⁽⁴⁾ Index	E-TFCI
1	11/15 ⁽³⁾	15/15 ⁽³⁾	64	11/15 ⁽³⁾	22/15	209/225	1039/225	4	1	1.0	0.0	20	75
2	6/15	15/15	64	6/15	12/15	12/15	94/75	4	1	3.0	2.0	12	67
3	15/15	9/15	64	15/9	30/15	30/15	$\beta_{ed1}: 47/15$ $\beta_{ed2}: 47/15$	4	2	2.0	1.0	15	92
4	2/15	15/15	64	2/15	4/15	2/15	56/75	4	1	3.0	2.0	17	71
5	15/15 ⁽⁴⁾	15/15 ⁽⁴⁾	64	15/15 ⁽⁴⁾	30/15	24/15	134/15	4	1	1.0	0.0	21	81

Note 1: Δ_{ACK} , Δ_{NACK} and $\Delta_{CQI} = 8 \Leftrightarrow A_{hs} = \beta_{hs}/\beta_c = 30/15 \Leftrightarrow \beta_{hs} = 30/15 * \beta_c$.

Note 2: CM = 1 for $\beta_c/\beta_d = 12/15$, $\beta_{hs}/\beta_c = 24/15$. For all other combinations of DPDCH, DPCCH, HS-DPCCH, E-DPDCH and E-DPCCH the MPR is based on the relative CM difference.

Note 3: For subtest 1 the β_c/β_d ratio of 11/15 for the TFC during the measurement period (TF1, TF0) is achieved by setting the signaled gain factors for the reference TFC (TF1, TF1) to $\beta_c = 10/15$ and $\beta_d = 15/15$.

Note 4: For subtest 5 the β_c/β_d ratio of 15/15 for the TFC during the measurement period (TF1, TF0) is achieved by setting the signaled gain factors for the reference TFC (TF1, TF1) to $\beta_c = 14/15$ and $\beta_d = 15/15$.

Note 5: Testing UE using E-DPDCH Physical Layer category 1 Sub-test 3 is not required according to TS 25.306 Table 5.1g.

Note 6: β_{ed} cannot be set directly; it is set by Absolute Grant Value.

HSPA+ 3GPP release 7 (uplink category 7) 16QAM, Setup Configuration:

Table C.11.1.4: β values for transmitter characteristics tests with HS-DPCCH and E-DCH with 16QAM

Sub-test	β_c (Note 3)	β_d	β_{hs} (Note 1)	β_{ec}	β_{ed} (2xSF2) (Note 4)	β_{ed} (2xSF4) (Note 4)	CM (dB) (Note 2)	MPR (dB) (Note 2)	AG Index (Note 4)	E-TFCI (Note 5)	E-TFCI (boost)
1	1	0	30/15	30/15	$\beta_{ed1}: 30/15$ $\beta_{ed2}: 30/15$	$\beta_{ed3}: 24/15$ $\beta_{ed4}: 24/15$	3.5	2.5	14	105	105

Note 1: Δ_{ACK} , Δ_{NACK} and $\Delta_{CQI} = 30/15$ with $\beta_{hs} = 30/15 * \beta_c$.

Note 2: CM = 3.5 and the MPR is based on the relative CM difference, MPR = MAX(CM-1,0).

Note 3: DPDCH is not configured, therefore the β_c is set to 1 and $\beta_d = 0$ by default.

Note 4: β_{ed} can not be set directly; it is set by Absolute Grant Value.

Note 5: All the sub-tests require the UE to transmit 2SF2+2SF4 16QAM EDCH and they apply for UE using E-DPDCH category 7. E-DCH TTI is set to 2ms TTI and E-DCH table index = 2. To support these E-DCH configurations DPDCH is not allocated. The UE is signaled to use the extrapolation algorithm.

DC-HSDPA Setup Configuration

The following tests were completed according to procedures in section 7.3.13 of 3GPP TS34.108 v9.5.0. A summary of these settings are illustrated below:

Downlink Physical Channels are set as per 3GPP TS34.121-1 v9.0.0 E.5.

Table E.5.0: Levels for HSDPA connection setup

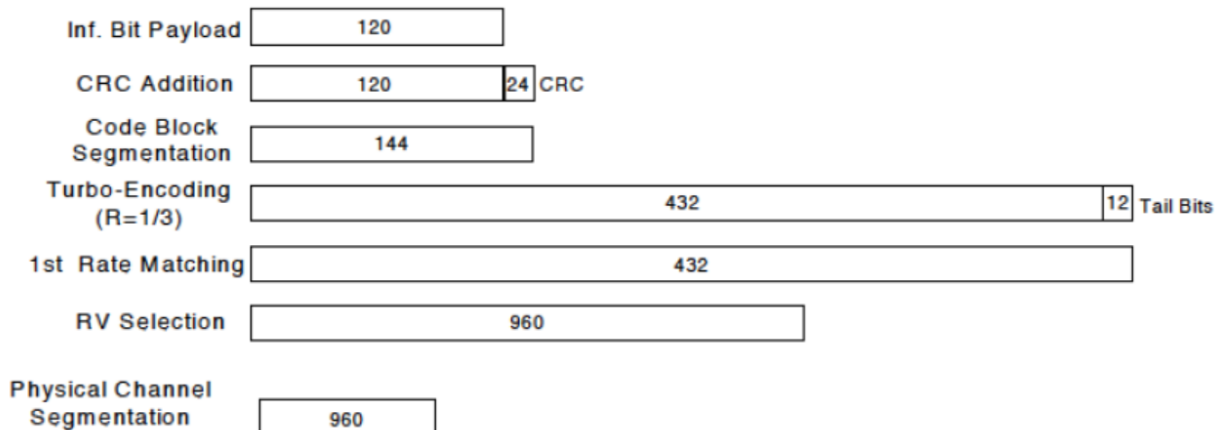
Parameter During Connection setup	Unit	Value
P-CPICH_Ec/Ior	dB	-10
P-CCPCH and SCH_Ec/Ior	dB	-12
PICH_Ec/Ior	dB	-15
HS-PDSCH	dB	off
HS-SCCH_1	dB	off
DPCH_Ec/Ior	dB	-5
OCNS_Ec/Ior	dB	-3.1

Call is set up as per 3GPP TS34.108 v9.5.0 sub clause 7.3.13

The configurations of the fixed reference channels for HSDPA RF tests are described in 3GPP TS 34.121, annex C for FDD and 3GPP TS 34.122.

Table C.8.1.12: Fixed Reference Channel H-Set 12

Parameter	Unit	Value
Nominal Avg. Inf. Bit Rate	kbps	60
Inter-TTI Distance	TTI's	1
Number of HARQ Processes	Processes	6
Information Bit Payload (N_{INF})	Bits	120
Number Code Blocks	Blocks	1
Binary Channel Bits Per TTI	Bits	960
Total Available SML's in UE	SML's	19200
Number of SML's per HARQ Proc.	SML's	3200
Coding Rate		0.15
Number of Physical Channel Codes	Codes	1
Modulation		QPSK
<p>Note 1: The RMC is intended to be used for DC-HSDPA mode and both cells shall transmit with identical parameters as listed in the table.</p> <p>Note 2: Maximum number of transmission is limited to 1, i.e., retransmission is not allowed. The redundancy and constellation version 0 shall be used.</p>		


Figure C.8.19: Coding rate for Fixed reference Channel H-Set 12 (QPSK)



<LTE Mode>

LTE Target MPR level

The device implements maximum power reduction per 3GPP 36.101 requirements where the MPR target is as below table. The MPR settings are implemented configured into firmware and cannot be disabled by the end user or LTE carrier network.

Modulation	Channel bandwidth/Transmission bandwidth configuration[RB]						MPR	3GPP
	1.4	3.0	5	10	15	20	Target	
	MHz	MHz	MHz	MHz	MHz	MHz	(dB)	
QPSK	> 5	> 4	> 8	> 12	> 16	> 18	1	≤ 1
16 QAM	≤ 5	≤ 4	≤ 8	≤ 12	≤ 16	≤ 18	1	≤ 1
64 QAM	> 5	> 4	> 8	> 12	> 16	> 18	2	≤ 2

Note: The measurement result showed some difference from the target MPR level, due to expected 0.5dB measurement tolerance

LTE Bands

LTE Bands	Channel bandwidth/Transmission bandwidth configuration [RB]					
	1.4	3.0	5	10	15	20
	MHz	MHz	MHz	MHz	MHz	MHz
2	✓	✓	✓	✓	✓	✓
4	✓	✓	✓	✓	✓	✓
5	✓	✓	✓	✓	N/A	N/A
7	N/A	N/A	✓	✓	✓	✓
12	✓	✓	✓	✓	N/A	N/A
13	N/A	N/A	✓	✓	N/A	N/A
14	N/A	N/A	✓	✓	N/A	N/A
17	N/A	N/A	✓	✓	N/A	N/A
18	N/A	N/A	✓	✓	✓	N/A
19	N/A	N/A	✓	✓	✓	N/A
25	✓	✓	✓	✓	✓	✓
26	✓	✓	✓	✓	✓	N/A
30	N/A	N/A	✓	✓	N/A	N/A
41	N/A	N/A	✓	✓	✓	✓
66	✓	✓	✓	✓	✓	✓
71	N/A	N/A	✓	✓	✓	✓

Note:

- Per KDB 941225 D05v02r05, when a properly configured base station simulator is used for the SAR and power measurements, spectrum plots for each RB allocation and offset configuration is not required.



2. Per KDB 941225 D05v02r05, start with the largest channel bandwidth and measure SAR for QPSK with 1 RB allocation, using the RB offset and required test channel combination with the highest maximum output power for RB offsets at the upper edge, middle and lower edge of each required test channel.
3. Per KDB 941225 D05v02r05, 50% RB allocation for QPSK SAR testing follows 1RB QPSK allocation procedure.
4. Per KDB 941225 D05v02r05, for QPSK with 100% RB allocation, SAR is not required when the highest maximum output power for 100 % RB allocation is less than the highest maximum output power in 50% and 1 RB allocations and the highest reported SAR for 1 RB and 50% RB allocation are ≤ 0.8 W/kg. Otherwise, SAR is measured for the highest output power channel; and if the reported SAR is > 1.45 W/kg, the remaining required test channels must also be tested.
5. Per KDB 941225 D05v02r05, 16QAM/64QAM output power for each RB allocation configuration is $>$ not $\frac{1}{2}$ dB higher than the same configuration in QPSK and the reported SAR for the QPSK configuration is ≤ 1.45 W/kg; Per KDB941225 D05v02r05, 16QAM/64QAM SAR testing is not required.
6. Per KDB 941225 D05v02r05, smaller bandwidth output power for each RB allocation configuration is $>$ not $\frac{1}{2}$ Db higher than the same configuration in the largest supported bandwidth, and the reported SAR for the largest supported band width is ≤ 1.45 W/kg; Per KDB 941225 D05v02r05, smaller bandwidth SAR testing is not required.
7. For LTE B4 / B5 / B7 / B17 the maximum bandwidth does not support three non-overlapping channels, per KDB941225 D05v02r05, when a device supports overlapping channel assignment in a channel bandwidth configuration, the middle channel of the group of overlapping channels should be selected for testing.
8. LTE band 2 / 4 / 5 / 12 SAR test was covered by Band 25 / 26 / 66 / 17; according to April 2015 TCB workshop, SAR test for overlapping LTE bands can be reduced if
 - a. The maximum output power, including tolerance, for the smaller band is \leq the larger band to qualify for the SAR test exclusion.
 - b. The channel bandwidth and other operating parameters for the smaller band are fully supported by the larger band.
9. According to 2017 TCB workshop, for 64 QAM and 16 QAM should be verified by checking the signal constellation with a call box to avoid incorrect maximum power levels due to MPR and other requirements associated with signal modulation, and the following figure is taken from the "Fundamental Measurement >> Modulation Analysis >>constellation" mode of the device connect to the CMW500 base station, therefore, the device 64QAM and 16QAMsignal modulation are correct. Identify if Maximum Power Reduction (MPR) is optional or mandatory, i.e. built-in by design: only mandatory MPR may be considered during SAR testing, when the maximum output power is permanently limited by the MPR implemented within the UE; and only for the applicable RB (resource block) configurations specified in LTE standards: b) A-MPR



(additional MPR) must be disabled.

10. Per KDB 447498 D01v06, the reported SAR is the measured SAR value adjusted for maximum tune-up tolerance.
 - a. Tune-up scaling Factor = tune-up limit power (mW) / EUT RF power (mW), where tune-up limit is the maximum rated power among all production units.
 - b. For SAR testing of WLAN signal with non-100% duty cycle, the measured SAR is scaled-up by the duty cycle scaling factor which is equal to "1/(duty cycle)"
 - c. For WWAN: Reported SAR(W/kg)= Measured SAR(W/kg)*Tune-up Scaling Factor
 - d. For WLAN/Bluetooth: Reported SAR(W/kg)= Measured SAR(W/kg)* Duty Cycle scaling factor * Tune-up scaling factor
 - e. For TDD LTE SAR measurement, the duty cycle 1:1.59 (62.9 %) was used perform testing and considering the theoretical duty cycle of 63.3% for extended cyclic prefix in the uplink, and the theoretical duty cycle of 62.9% for normal cyclic prefix in uplink, a scaling factor of extended cyclic prefix 63.3%/62.9% = 1.006 is applied to scale-up the measured SAR result. The Reported TDD LTE SAR = measured SAR (W/kg)* Tune-up Scaling Factor* scaling factor for extended cyclic prefix.
11. Per KDB 447498 D01v06, for each exposure position, testing of other required channels within the operating mode of a frequency band is not required when the reported 1-g or 10-g SAR for the mid-band or highest output power channel is: ≤ 0.8 W/kg or 2.0 W/kg, for 1-g or 10-g respectively, when the transmission band is ≤ 100 MHz ≤ 0.6 W/kg or 1.5 W/kg, for 1-g or 10-g respectively, when the transmission band is between 100 MHz and 200 MHz ≤ 0.4 W/kg or 1.0 W/kg, for 1-g or 10-g respectively, when the transmission band is ≥ 200 MHz
12. Per KDB 865664 D01v01r04, for each frequency band, repeated SAR measurement is required only when the measured SAR is ≥ 0.8 W/kg.
13. Per KDB 648474 D04v01r03, when the reported SAR for a body-worn accessory measured without a headset connected to the handset is ≤ 1.2 W/kg, SAR testing with a headset connected to the handset is not required.

<WLAN 2.4GHz>

1. SAR is measured for 2.4 GHz 802.11b DSSS using either the fixed test position or, when applicable, the initial test position procedure. SAR test reduction is determined according to the following:
 - a. When the reported SAR of the highest measured maximum output power channel for the exposure configuration is ≤ 0.8 W/kg, no further SAR testing is required for 802.11b DSSS in that exposure configuration.
 - b. When the reported SAR is > 0.8 W/kg, SAR is required for that position using the next highest measured output power channel. When any reported SAR is > 1.2 W/kg, SAR is required for the third channel; i.e., all channels require testing.
2. 2.4 GHz 802.11 g/n OFDM are additionally evaluated for SAR if the highest reported SAR for 802.11b, adjusted by the ratio of the OFDM to DSSS specified maximum output power, is > 1.2

W/kg. When SAR is required for OFDM modes in 2.4 GHz band, the Initial Test configuration Procedures should be followed.

3. For held-to-ear and hotspot operations, the initial test position procedures were applied. The test position with the highest extrapolated peak SAR will be used as the initial test position. When reported SAR for the initial test position is ≤ 0.4 W/kg, no additional testing for the remaining test positions was required. Otherwise, SAR is evaluated at the subsequent highest peak SAR positions until the reported SAR result is ≤ 0.8 W/kg or all test positions are measured.
4. Justification for test configurations for WLAN per KDB Publication 248227 D02DR02-41929 for 2.4 GHz WI-FI single transmission chain operations, the highest measured maximum output power channel for DSSS was selected for SAR measurement. SAR for OFDM modes (2.4 GHz 802.11g/n) was not required due to the maximum allowed powers and the highest reported SAR.
5. Per KDB 248227 D01v02r02, In the 2.4 GHz band, separate SAR procedures are applied to DSSS and OFDM configurations to simplify DSSS test requirements. SAR is not required for the following 2.4 GHz OFDM conditions:
 - a. When KDB Publication 447498 SAR test exclusion applies to the OFDM configuration.
 - b. When the highest reported SAR for DSSS is adjusted by the ratio of OFDM to DSSS specified maximum output power and the adjusted SAR is ≤ 1.2 W/kg.

<WLAN 5GHz>

A) U-NII-1 and U-NII-2A Bands

For devices that operate in only one of the U-NII-1 and U-NII-2A bands, the normally required SAR procedures for OFDM configurations are applied. For devices that operate in both U-NII bands using the same transmitter and antenna(s), SAR test reduction is determined according to the following:

1. When the same maximum output power is specified for both bands, begin SAR measurement in U-NII-2A band by applying the OFDM SAR requirements. If the highest reported SAR for a test configuration is ≤ 1.2 W/kg, SAR is not required for U-NII-1 band for that configuration (802.11 mode and exposure condition); otherwise, both bands are tested independently for SAR.
2. When different maximum output power is specified for the bands, begin SAR measurement in the band with higher specified maximum output power. The highest reported SAR for the tested configuration is adjusted by the ratio of lower to higher specified maximum output power for the two bands. When the adjusted SAR is ≤ 1.2 W/kg, SAR is not required for the band with lower maximum output power in that test configuration; otherwise, both bands are tested independently for SAR.
3. The two U-NII bands may be aggregated to support a 160 MHz channel on channel number 50.
4. Without additional testing, the maximum output power for this is limited to the lower of the maximum output power certified for the two bands. When SAR measurement is required for at

least one of the bands and the highest reported SAR adjusted by the ratio of specified maximum output power of aggregated to standalone band is $> 1.2 \text{ W/kg}$, SAR is required for the 160 MHz channel. This procedure does not apply to an aggregated band with maximum output higher than the standalone band(s); the aggregated band must be tested independently for SAR. SAR is not required when the 160 MHz channel is operating at a reduced maximum power and also qualifies for SAR test exclusion.

B) U-NII-2C and U-NII-3 Bands

The frequency range covered by these bands is 380 MHz (5.47 – 5.85 GHz), which requires a minimum of at least two SAR probe calibration frequency points to support SAR measurements. when Terminal Doppler Weather Radar (TDWR) restriction applies, all channels that operate at 5.60 – 5.65 GHz must be included to apply the SAR test reduction and measurement procedures. When the same transmitter and antenna(s) are used for U-NII-2C band and U-NII-3 band or 5.8 GHz band of §15.247, the bands may be aggregated to enable additional channels with 20, 40 or 80 MHz bandwidth to span across the band gap, as illustrated in Appendix B. The maximum output power for the additional band gap channels is limited to the lower of those certified for the bands. Unless band gap channels are permanently disabled, they must be considered for SAR testing. The frequency range covered by these bands is 380 MHz (5.47 – 5.85 GHz), which requires a minimum of at least two SAR probe calibration frequency points to support SAR measurements. To maintain SAR measurement accuracy and to facilitate test reduction, the channels in U-NII-2C band above 5.65 GHz may be grouped with the 5.8 GHz channels in U-NII-3 or §15.247 band to enable two SAR probe calibration frequency points to cover the bands, including the band gap channels. When band gap channels are supported and the bands are not aggregated for SAR testing, band gap channels must be considered independently in each band according to the normally required OFDM SAR measurement and probe calibration frequency points requirements.

C) OFDM Transmission Mode SAR Test Configuration and Channel Selection Requirements

The initial test configuration for 5 GHz OFDM transmission modes is determined by the 802.11 configuration with the highest maximum output power specified for production units, including tune-up tolerance, in each standalone and aggregated frequency band. SAR for the initial test configuration is measured using the highest maximum output power channel determined by the default power measurement procedures. When multiple configurations in a frequency band have the same specified maximum output power, the initial test configuration is determined according to the following steps applied sequentially.

1. The largest channel bandwidth configuration is selected among the multiple configurations with the same specified maximum output power.
2. If multiple configurations have the same specified maximum output power and largest channel bandwidth, the lowest order modulation among the largest channel bandwidth configurations is selected.



3. If multiple configurations have the same specified maximum output power, largest channel band width and lowest order modulation, the lowest data rate configuration among these configurations is selected.
4. When multiple transmission modes (802.11a/g/n/ac) have the same specified maximum output power, largest channel bandwidth, lowest order modulation and lowest data rate, the lowest order 802.11 mode is selected; i.e., 802.11a is chosen over 802.11n then 802.11ac or 802.11g is chosen over 802.11n. After an initial test configuration is determined, if multiple test channels have the same measured maximum output power, the channel chosen for SAR measurement is determined according to the following. These channel selection procedures apply to both the initial test configuration and subsequent test configuration(s), with respect to the default power measurement procedures or additional power measurements required for further SAR test reduction. The same procedures also apply to subsequent highest output power channel(s) selection.
5. The channel closest to mid-band frequency is selected for SAR measurement.
6. For channels with equal separation from mid-band frequency; for example, high and low channels or two mid-band channels, the higher frequency (number) channel is selected for SAR measurement.

D) SAR Test Requirements for OFDM configurations

When SAR measurement is required for 802.11 a/n/ac OFDM configurations, each standalone and frequency aggregated band is considered separately for SAR test reduction. When the same transmitter and antenna(s) are used for U-NII-1 and U-NII-2A bands, additional SAR test reduction applies. When band gap channels between U-NII-2C band and 5.8 GHz U-NII-3 or §15.247 band are supported, the highest maximum output power transmission mode configuration and maximum output power channel across the bands must be used to determine SAR test reduction, according to the initial test configuration and subsequent test configuration requirements. In applying the initial test configuration and subsequent test configuration procedures, the 802.11 transmission configuration with the highest specified maximum output power and the channel within a test configuration with the highest measured maximum output power should be clearly distinguished to apply the procedures.

12 Conducted Output Power

Remark: The output power of WCDMA/LTE/WLAN/Bluetooth were recorded in annex E of this report.

13 Carrier Aggregation

13.1 LTE Uplink Carrier Aggregation

➤ Carrier Aggregation Configuration

<Intra-band>

2CC Uplink Carrier Aggregation for Intra-band				
No.	Combination	MIMO	Restriction	Completely Covered by Measurement Superset
1	CA_7C	7C	-	No
2	CA_41C	41C	-	No

Note:

1. According to the 3GPP 36.101 table 6.2.2A-1 specifies that the aggregation maximum allowed output power is equivalent to the signal carrier scenario for intra-band contiguous carrier aggregation scenarios. When the non-contiguous RB allocation is applied the MPR shell complies with the table 6.2.3A defined in 3GPP 36.101.
2. According to the TCB Workshop publication, the output power of uplink CA would be measured with the wideband signal integration over the component carriers. And SAR measurement would be performed at the worst exposure condition of each band.
3. Additional SAR measurement for LTE UL CA with other DL CA combinations are not required when the maximum output power of this configuration is not $> 1/4$ dB higher than the maximum output power for UL CA active.
4. According to October 2018 TCB Workshop publication, LTE uplink CA SAR assessment should follow:
5. If the signal uplink 1-g SAR values for each band are both less than 0.8 W/kg and the algebraic summation of the 1-g SAR values are less than 1.45 W/kg no additional measurements need to be performed.
6. If one or the signal uplink 1-g SAR values is greater than 0.8 W/kg, instead of algebraically summing the 1-g SAR values, sum up the SAR distributions, similar to the enlarged zoom scan (volume scan) procedures found in FCC KDB Publication 865664 D01. And PAG is required for this case.



7. If the algebraic sum of the 1-g SAR values is > 1.45 W/kg additional measurements may have to be made. Submit a KDB inquiry for additional guidance. And PAG is required for this case.

13.2 LTE Downlink Carrier Aggregation

➤ Carrier Aggregation Configuration

For the device supports bands and bandwidths and configurations are provided as follow table was according to 3GPP.

Downlink Carrier Aggregation				
No.	Combination	UL/ULCA	DL 4 × 4 MIMO	Restriction
1	CA_12A-30A	-	-	-
2	CA_25A-25A	-	-	-
3	CA_25A-26A	-	-	-
4	CA_26A-41A	-	-	-
5	CA_29A-30A	-	-	-
6	CA_2A-12A	-	-	-
7	CA_2A-13A	-	-	-
8	CA_2A-17A	-	-	-
9	CA_2A-29A	-	-	-
10	CA_2A-2A	-	-	-
11	CA_2A-4A	-	-	-
12	CA_2A-5A	-	-	-
13	CA_2C	-	-	-
14	CA_41A-41A	-	-	-
15	CA_41C	41C	-	-
16	CA_4A-12A	-	-	-
17	CA_4A-13A	-	-	-
18	CA_4A-17A	-	-	-
19	CA_4A-29A	-	-	-
20	CA_4A-4A	-	-	-
21	CA_4A-5A	-	-	-
22	CA_5A-30A	-	-	-

23	CA_5A-7A	-	-	-
24	CA_7A-20A	-	-	-
25	CA_7A-7A	-	-	-
26	CA_7C	7C	-	-
27	CA_5A-5A	-	-	-
28	CA_5B	-	-	-
29	CA_12A-66A	-	-	-
30	CA_13A-66A	-	-	-
31	CA_29A-66A	-	-	-
32	CA_2A-66A	-	-	-
33	CA_5A-66A	-	-	-
34	CA_66A-66A	-	-	-
35	CA_66B	-	-	-
36	CA_66C	-	-	-
37	CA_5A-41A	-	-	-
38	CA_66A-71A	-	-	-
39	CA_4A-71A	-	-	-
40	CA_2A-71A	-	-	-
41	CA_14A-66A	-	-	-
42	CA_14A-30A	-	-	-
43	CA_2A-14A	-	-	-

➤ **LTE Downlink Carrier Aggregation Conducted Power**

1. According to KDB941225 D05A v01r02, Uplink maximum output power measurement with downlink carrier aggregation active should be measured, using the highest output channel measured without downlink carrier aggregation, to confirm that uplink maximum output power with downlink carrier aggregation active remains within the specified tune-up tolerance limits and not more than ¼ dB higher than the maximum output measured without downlink carrier aggregation active.
2. Uplink maximum output power with downlink carrier aggregation active does not show more than ¼ dB higher than the maximum output power without downlink carrier aggregation active, therefore SAR evaluation with downlink carrier aggregation active can be excluded.
3. For power measurement were control and acknowledge data is sent on uplink channels that operate identical to specifications when downlink carrier aggregation is inactive.

4. Selected highest measured power when downlink carrier aggregation is inactive for conducted power comparison with downlink carrier aggregation is active, to confirm that when downlink carrier aggregation is active uplink maximum output power remains within the specified tune-up tolerance limits and not more than ¼ dB higher than the maximum output power measured when downlink carrier aggregation inactive.
5. For non-contiguous intra-band CA, the SCC selected to provide maximum separation from the PCC and must remain fully within the downlink transmission band.
6. For Intra-band, contiguous CA, the downlink channels selected to perform the uplink power measurement must satisfy
7. 3GPP channel spacing (5.4.1A of 3GPP TS 36.521 or equivalent) and channel bandwidth (5.4.2A) requirements.

$$\text{Nominal channel spacing} = \left\lceil \frac{BW_{\text{Channel}(1)} + BW_{\text{Channel}(2)} - 0.1|BW_{\text{Channel}(1)} - BW_{\text{Channel}(2)}|}{0.6} \right\rceil 0.3 \text{ [MHz]}$$

- 8.
9. The output power of CA uplink & downlink refers to the annex E of this report.

14 Exposure Positions Consideration

➤ EUT Antenna Locations

The location of antenna was recorded in annex B	
Antenna	Support band
Main	WCDMA trx: 1/2/4/5 LTE trx: B1/2/3/4/5/7/12/13/14/17/18/19/20/25/26/29/30/41/66/71
Gps/wifi	GPS L1/2.4G WIFI/5G WIFI
Div	WCDMA mimo: 1/2/4/5 LTE mimo: B1/2/3/4/5/7/12/13/14/17/18/19/20/25/26/29/30/41/66/71
Ble	BT

➤ Test Positions Consideration

1. The test position consideration was recorded in annex F.
2. Per KDB 616217 D04v01r02, when the overall diagonal dimension of display is > 20 cm, the test distance is 0mm; the SAR Test Exclusion Threshold in KDB 447498 section 4.3.1 can be applied to determine SAR test exclusion for adjacent edge configurations.
3. Per KDB 616217 D04v01r02, SAR evaluation for the front surface of tablet display screens is generally not necessary.
4. Per KDB 616217 D04v01r02, additional testing for hotspot SAR is not required.

15 Proximity Sensor Considerations

15.1 Proximity Sensor Triggering Distances

➤ P-sensor Triggering Distance Testing

Proximity sensor triggering distances measurement was performed according to the procedures outlined in KDB 616217 D04 section 6.2. The EUT should be moved further away from and toward the flat phantom that fill with the tissue simulating liquid to determine the proximity sensor triggering distances. Conducted power is monitored qualitatively to identify the general triggering characteristics and recorded quantitatively, versus spacing, as required by the procedures.

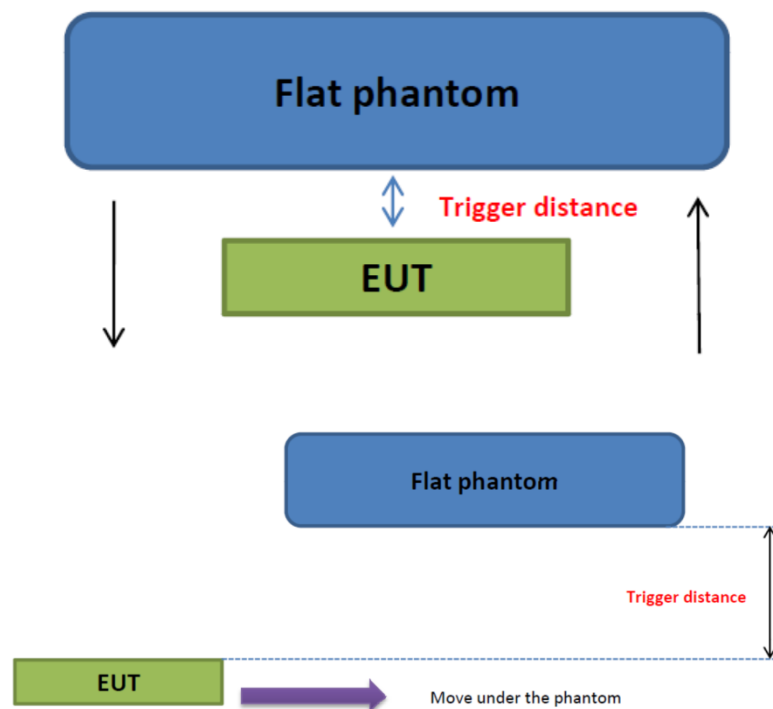


Fig.15.1 Illustration for proximity sensor trigger

➤ P-sensor Triggering Distance

<Main ANT>

Proximity Sensor Trigger Distance (mm)			
Exposure Position	Bottom Face	Edge 1	Edge 4
Minimum	29	21	16

<wifi ANT>

Proximity Sensor Trigger Distance (mm)		
Exposure Position	Bottom Face	Edge 1
Minimum	29	7

15.2 Proximity Sensor Coverage

Proximity sensors are not normally designed to cover the entire back surface or edges of a tablet. The sensing regions are usually limited to areas near the sensor element. If a sensor is spatially offset from the antenna(s), it is necessary to verify sensor triggering for conditions where the antenna is next to the user but the sensor is laterally further away to ensure sensor coverage is sufficient for reducing the power to maintain compliance. For P-sensor coverage testing, the device is moved and “along the direction of maximum antenna and sensor offset”. Illustrating in the internal photo exhibit, although the sensor spatially offset, there is no trigger condition where the antenna is next to the user, the sensor is laterally further away, therefore proximity sensor coverage testing is not required.

This procedure is not required since the antenna, sensor and peak SAR location is overlapped with the sensor.

15.3 Tablet Tilt Angle Influences to P-Sensor Triggering

➤ P-sensor Triggering Distance Testing

The influence of table tilt angles to proximity sensor triggering is determined by positioning each tablet edge that contains a transmitting antenna, perpendicular to the flat phantom, at the smallest sensor triggering test distance determined in 6.2 and 6.3 by rotating the tablet around the edge next to the phantom in ≤ 10 increments until the tablet is 45° or more from the vertical position at 0° .

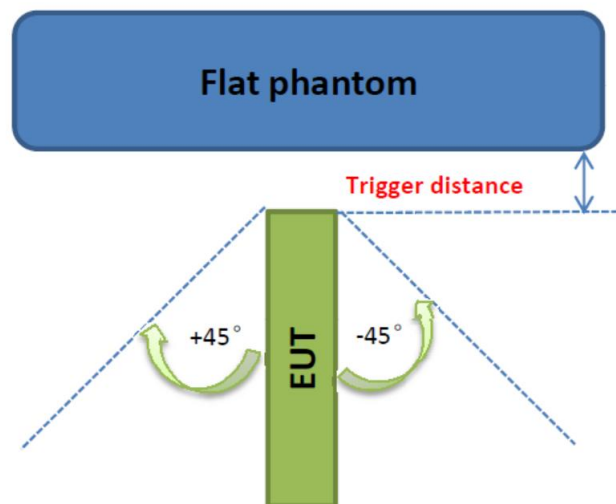


Fig.15.2 Illustration for proximity sensor trigger for tablet tilt angle influences



15.4 Proximity Sensor Power Reduction

Remark: The power reduction list and graphs were recorded in annex G.

16 SAR Test Results Summary

16.1 Test Guidance

1. The reported SAR is the measured SAR value adjusted for maximum tune-up tolerance.
 1. Tune-up scaling Factor = tune-up limit power (mW) / EUT RF power (mW), where tune-up limit is the maximum rated power among all production units.
 2. For SAR testing of WLAN signal with non-100% duty cycle, the measured SAR is scaled-up by the duty cycle scaling factor which is equal to "1/(duty cycle)".
 3. For WLAN/Bluetooth: Reported SAR (W/kg) = Measured SAR (W/kg) * Duty Cycle scaling factor * Tune-up scaling factor.
2. Per KDB 447498 D01v06, for each exposure position, testing of other required channels within the operating mode of a frequency band is not required when the *reported* 1-g or 10-g SAR for the mid-band or highest output power channel is:
 - a. ≤ 0.8 W/kg or 2.0 W/kg, for 1-g or 10-g respectively, when the transmission band is ≤ 100 MHz
 - b. ≤ 0.6 W/kg or 1.5 W/kg, for 1-g or 10-g respectively, when the transmission band is between 100 MHz and 200 MHz
 - c. ≤ 0.4 W/kg or 1.0 W/kg, for 1-g or 10-g respectively, when the transmission band is ≥ 200 MHz
3. Per KDB248227 D01v02r02, a Wi-Fi device must be configured to transmit continuously at the required data rate, channel bandwidth and signal modulation, using the highest transmission duty factor supported by the test mode tools for SAR measurement. The test frequencies established using test mode must correspond to the actual channel frequencies required for operations in the U.S. When 802.11 frame gaps are accounted for in the transmission, a maximum transmission duty factor of 92 - 96% is typically achievable in most test mode configurations. A minimum transmission duty factor of 85% is required to avoid certain hardware and device implementation issues related to wide range SAR scaling. In addition, a periodic transmission duty factor is required for current generation SAR systems to measure SAR correctly. Unless it is permitted by specific KDB procedures or continuous transmission is specifically restricted by the device, the reported SAR must be scaled to 100% transmission duty factor to determine compliance at the maximum tune-up tolerance limit. When a device is

not capable of sustaining continuous transmission or the output can become nonlinear, and it is limited by hardware design and unable to transmit at higher than 85% duty factor, a periodic duty factor within 15% of the maximum duty factor the device is capable of transmitting should be used. The reported SAR must be scaled to the maximum transmission duty factor to determine compliance. Descriptions of the procedures applied to establish the specific duty factor used for SAR testing are required in SAR reports to support the test results.

4. For CA UL SAR measurement, the worst condition of standalone transmission would be tested.
5. When the proximity sensor is active, the reduced power of WWAN will be applied to bottom face, edge 1, and edge 4, and the reduced power of WLAN will be applied to bottom face, edge 1, and edge 2.
6. The maximum power of NFC is less than 1 mW per the manual information, therefore it is not required for RF exposure.
7. This device supports power reduction machine according to different using condition, and the power level applied follows below.

Power Level	Senor Configuration	Test Position
Full Power	Sensor off	Body
Reduced Power	Sensor on	Body



16.2 Body SAR Data

➤ WCDMA Body SAR

Plot No.	Band/Mode	Test Position	CH.	Ave. Power (dBm)	Tune-up Limit (dBm)	Tune-up Scaling Factor	Meas. SAR1g (W/kg)	Reported SAR1g (W/kg)
Full Power								
	Band II/RMC 12.2Kbps	Bottom Face	9400	23.18	24.00	1.208	0.217	0.262
	Band II/RMC 12.2Kbps	Edge 1	9400	23.18	24.00	1.208	0.039	0.047
	Band II/RMC 12.2Kbps	Edge 4	9400	23.18	24.00	1.208	0.032	0.039
Reduced Power								
	Band II/RMC 12.2Kbps	Bottom Face	9400	16.18	17.00	1.208	0.801	0.967
	Band II/RMC 12.2Kbps	Edge 1	9400	16.18	17.00	1.208	0.085	0.103
	Band II/RMC 12.2Kbps	Edge 4	9400	16.18	17.00	1.208	0.110	0.133
1#	Band II/RMC 12.2Kbps	Bottom Face	9262	16.11	17.00	1.227	0.835	1.025
	Band II/RMC 12.2Kbps	Bottom Face	9538	16.16	17.00	1.213	0.826	1.002
Full Power								
	Band IV/RMC 12.2Kbps	Bottom Face	1413	23.09	24.00	1.233	0.167	0.206
	Band IV/RMC 12.2Kbps	Edge 1	1413	23.09	24.00	1.233	0.039	0.048
	Band IV/RMC 12.2Kbps	Edge 4	1413	23.09	24.00	1.233	0.031	0.038
Reduced Power								
2#	Band IV/RMC 12.2Kbps	Bottom Face	1413	16.59	17.50	1.233	0.762	0.940
	Band IV/RMC 12.2Kbps	Edge 1	1413	16.59	17.50	1.233	0.087	0.107
	Band IV/RMC 12.2Kbps	Edge 4	1413	16.59	17.50	1.233	0.103	0.127
	Band IV/RMC 12.2Kbps	Bottom Face	1312	16.57	17.50	1.239	0.738	0.914
	Band IV/RMC 12.2Kbps	Bottom Face	1513	16.48	17.50	1.265	0.741	0.937
Full Power								
	Band V/RMC 12.2Kbps	Bottom Face	4182	23.02	24.00	1.253	0.062	0.078
	Band V/RMC 12.2Kbps	Edge 1	4182	23.02	24.00	1.253	0.042	0.053
	Band V/RMC 12.2Kbps	Edge 4	4182	23.02	24.00	1.253	0.032	0.040
Reduced Power								
	Band V/RMC 12.2Kbps	Bottom Face	4182	21.52	22.50	1.253	0.734	0.920
	Band V/RMC 12.2Kbps	Edge 1	4182	21.52	22.50	1.253	0.303	0.380
	Band V/RMC 12.2Kbps	Edge 4	4182	21.52	22.50	1.253	0.263	0.330
3#	Band V/RMC 12.2Kbps	Bottom Face	4132	21.41	22.50	1.285	0.764	0.982
	Band V/RMC 12.2Kbps	Bottom Face	4233	21.50	22.50	1.259	0.740	0.932


➤ **LTE QPSK Body SAR**

Plot No.	Band/Mode	Test Position	CH.	Ave. Power (dBm)	Tune-up Limit (dBm)	Tune-up Scaling Factor	Meas. SAR1g (W/kg)	Reported SAR1g (W/kg)
Full Power								
	LTE Band 7/1RB#0 20M	Bottom Face	21100	23.23	24.50	1.340	0.302	0.405
	LTE Band 7/1RB#0 20M	Edge 1	21100	23.23	24.50	1.340	0.269	0.360
	LTE Band 7/1RB#0 20M	Edge 2	21100	23.23	24.50	1.340	0.058	0.078
	LTE Band 7/1RB#0 20M	Edge 4	21100	23.23	24.50	1.340	0.150	0.201
	LTE Band 7/50RB#0 20M	Bottom Face	21100	22.30	23.50	1.318	0.275	0.363
	LTE Band 7/50RB#0 20M	Edge 1	21100	22.30	23.50	1.318	0.267	0.352
	LTE Band 7/50RB#0 20M	Edge 2	21100	22.30	23.50	1.318	0.043	0.057
	LTE Band 7/50RB#0 20M	Edge 4	21100	22.30	23.50	1.318	0.183	0.241
Reduced Power								
4#	LTE Band 7/1RB#0 20M	Bottom Face	21100	12.73	14.00	1.340	0.719	0.963
	LTE Band 7/1RB#0 20M	Edge 1	21100	12.73	14.00	1.340	0.295	0.395
	LTE Band 7/1RB#0 20M	Edge 4	21100	12.73	14.00	1.340	0.331	0.443
	LTE Band 7/1RB#0 20M	Bottom Face	20850	12.66	14.00	1.361	0.683	0.930
	LTE Band 7/1RB#0 20M	Bottom Face	21350	12.70	14.00	1.349	0.662	0.893
	LTE Band 7/50RB#0 20M	Bottom Face	21100	11.80	13.00	1.318	0.701	0.924
	LTE Band 7/50RB#0 20M	Edge 1	21100	11.80	13.00	1.318	0.284	0.374
	LTE Band 7/50RB#0 20M	Edge 4	21100	11.80	13.00	1.318	0.323	0.426
	LTE Band 7/50RB#0 20M	Bottom Face	20850	11.71	13.00	1.346	0.665	0.895
	LTE Band 7/50RB#0 20M	Bottom Face	21350	11.65	13.00	1.365	0.649	0.886
	LTE Band 7/100RB#0 20M	Bottom Face	21100	11.72	13.00	1.343	0.601	0.807
	CA_7C/1RB#0 20M	Bottom Face	21001	11.79	13.00	1.321	0.574	0.758
Full Power								
	LTE Band 12/1RB#0 10M	Bottom Face	23095	23.38	24.50	1.294	0.117	0.151
	LTE Band 12/1RB#0 10M	Edge 1	23095	23.38	24.50	1.294	0.058	0.075
	LTE Band 12/1RB#0 10M	Edge 2	23095	23.38	24.50	1.294	0.179	0.232
	LTE Band 12/1RB#0 10M	Edge 4	23095	23.38	24.50	1.294	0.037	0.048
	LTE Band 12/25RB#0 10M	Bottom Face	23095	22.44	23.50	1.276	0.104	0.133
	LTE Band 12/25RB#0 10M	Edge 1	23095	22.44	23.50	1.276	0.051	0.065
	LTE Band 12/25RB#0 10M	Edge 4	23095	22.44	23.50	1.276	0.034	0.043
Reduced Power								
5#	LTE Band 12/1RB#0 10M	Bottom Face	23095	22.88	24.00	1.294	0.916	1.185
	LTE Band 12/1RB#0 10M	Edge 1	23095	22.88	24.00	1.294	0.283	0.366
	LTE Band 12/1RB#0 10M	Edge 4	23095	22.88	24.00	1.294	0.391	0.506
	LTE Band 12/1RB#0 10M	Bottom Face	23060	22.80	24.00	1.318	0.895	1.180



	LTE Band 12/1RB#0 10M	Bottom Face	23130	22.85	24.00	1.303	0.877	1.143
	LTE Band 12/25RB#0 10M	Bottom Face	23095	21.94	23.00	1.276	0.912	1.164
	LTE Band 12/25RB#0 10M	Edge 1	23095	21.94	23.00	1.276	0.274	0.350
	LTE Band 12/25RB#0 10M	Edge 2	23095	21.94	23.00	1.276	0.169	0.216
	LTE Band 12/25RB#0 10M	Edge 4	23095	21.94	23.00	1.276	0.374	0.477
	LTE Band 12/25RB#0 10M	Bottom Face	23060	21.88	23.00	1.294	0.881	1.140
	LTE Band 12/25RB#0 10M	Bottom Face	23130	21.86	23.00	1.300	0.866	1.126
	LTE Band 12/100RB#0 10M	Bottom Face	23095	21.87	23.00	1.297	0.775	1.005
Full Power								
	LTE Band 13/1RB#0 10M	Bottom Face	23230	23.40	24.50	1.288	0.118	0.152
	LTE Band 13/1RB#0 10M	Edge 1	23230	23.40	24.50	1.288	0.043	0.055
	LTE Band 13/1RB#0 10M	Edge 2	23230	23.40	24.50	1.288	0.304	0.392
	LTE Band 13/1RB#0 10M	Edge 4	23230	23.40	24.50	1.288	0.028	0.036
	LTE Band 13/25RB#0 10M	Bottom Face	23230	22.41	23.50	1.285	0.107	0.138
	LTE Band 13/25RB#0 10M	Edge 1	23230	22.41	23.00	1.146	0.038	0.044
	LTE Band 13/25RB#0 10M	Edge 2	23230	22.41	23.00	1.146	0.189	0.217
	LTE Band 13/25RB#0 10M	Edge 4	23230	22.41	23.00	1.146	0.025	0.029
Reduced Power								
6#	LTE Band 13/1RB#0 10M	Bottom Face	23230	22.40	23.50	1.288	0.931	1.199
	LTE Band 13/1RB#0 10M	Edge 1	23230	22.40	23.50	1.288	0.304	0.392
	LTE Band 13/1RB#0 10M	Edge 4	23230	22.40	23.50	1.288	0.268	0.345
	LTE Band 13/25RB#0 10M	Bottom Face	23230	21.41	22.50	1.285	0.914	1.175
	LTE Band 13/25RB#0 10M	Edge 1	23230	21.41	22.50	1.285	0.286	0.368
	LTE Band 13/25RB#0 10M	Edge 4	23230	21.41	22.50	1.285	0.265	0.341
	LTE Band 13/50RB#0 10M	Bottom Face	23230	21.30	22.50	1.318	0.811	1.069
Full Power								
	LTE Band 14/1RB#0 10M	Bottom Face	23330	23.69	24.50	1.205	0.117	0.141
	LTE Band 14/1RB#0 10M	Edge 1	23330	23.69	24.50	1.205	0.044	0.053
	LTE Band 14/1RB#0 10M	Edge 2	23330	23.69	24.50	1.205	0.320	0.386
	LTE Band 14/1RB#0 10M	Edge 4	23330	23.69	24.50	1.205	0.031	0.037
	LTE Band 14/25RB#0 10M	Bottom Face	23330	22.71	23.50	1.199	0.104	0.125
	LTE Band 14/25RB#0 10M	Edge 1	23330	22.71	23.50	1.199	0.044	0.053
	LTE Band 14/25RB#0 10M	Edge 2	23330	22.71	23.50	1.199	0.157	0.188
	LTE Band 14/25RB#0 10M	Edge 4	23330	22.71	23.50	1.199	0.026	0.031
Reduced Power								
7#	LTE Band 14/1RB#0 10M	Bottom Face	23330	20.69	21.50	1.205	0.851	1.025
	LTE Band 14/1RB#0 10M	Edge 1	23330	20.69	21.50	1.205	0.320	0.386



	LTE Band 14/1RB#0 10M	Edge 4	23330	20.69	21.50	1.205	0.234	0.282
	LTE Band 14/25RB#0 10M	Bottom Face	23330	19.71	20.50	1.199	0.825	0.990
	LTE Band 14/25RB#0 10M	Edge 1	23330	19.71	20.50	1.199	0.240	0.288
	LTE Band 14/25RB#0 10M	Edge 4	23330	19.71	20.50	1.199	0.176	0.211
	LTE Band 14/100RB#0 10M	Bottom Face	23330	19.60	20.50	1.230	0.710	0.873
Full Power								
8#	LTE Band 18/1RB#0 10M	Bottom Face	23925	23.15	24.50	1.365	0.842	1.149
	LTE Band 18/1RB#0 10M	Edge 1	23925	23.15	24.50	1.365	0.297	0.405
	LTE Band 18/1RB#0 10M	Edge 4	23925	23.15	24.50	1.365	0.183	0.250
	LTE Band 18/1RB#0 10M	Bottom Face	23900	23.12	24.50	1.374	0.801	1.101
	LTE Band 18/1RB#0 10M	Bottom Face	23950	23.11	24.50	1.377	0.832	1.146
	LTE Band 18/25RB#0 10M	Bottom Face	23925	22.36	23.00	1.159	0.801	0.928
	LTE Band 18/25RB#0 10M	Edge 1	23925	22.36	23.00	1.159	0.267	0.309
	LTE Band 18/25RB#0 10M	Edge 4	23925	22.36	23.00	1.159	0.165	0.191
	LTE Band 18/25RB#0 10M	Bottom Face	23900	22.20	23.00	1.202	0.721	0.867
	LTE Band 18/25RB#0 10M	Bottom Face	23950	22.25	23.00	1.189	0.749	0.890
	LTE Band 18/50RB#0 10M	Bottom Face	23925	22.14	23.00	1.219	0.708	0.863
Full Power								
	LTE Band 19/1RB#0 10M	Bottom Face	24075	23.14	24.50	1.368	0.107	0.146
	LTE Band 19/1RB#0 10M	Edge 1	24075	23.14	24.50	1.368	0.041	0.056
	LTE Band 19/1RB#0 10M	Edge 4	24075	23.14	24.50	1.368	0.029	0.040
	LTE Band 19/25RB#0 10M	Bottom Face	24075	22.26	23.50	1.330	0.104	0.138
	LTE Band 19/25RB#0 10M	Edge 1	24075	22.26	23.50	1.330	0.035	0.047
	LTE Band 19/25RB#0 10M	Edge 4	24075	22.26	23.50	1.330	0.020	0.027
Reduced Power								
9#	LTE Band 19/1RB#0 10M	Bottom Face	24075	22.64	24.00	1.368	0.804	1.100
	LTE Band 19/1RB#0 10M	Edge 1	24075	22.64	24.00	1.368	0.330	0.451
	LTE Band 19/1RB#0 10M	Edge 4	24075	22.64	24.00	1.368	0.190	0.260
	LTE Band 19/1RB#0 10M	Bottom Face	24050	22.57	24.00	1.390	0.779	1.083
	LTE Band 19/1RB#0 10M	Bottom Face	24100	22.58	24.00	1.387	0.791	1.097
	LTE Band 19/25RB#0 10M	Bottom Face	24075	21.76	23.00	1.330	0.811	1.079
	LTE Band 19/25RB#0 10M	Edge 1	24075	21.76	23.00	1.330	0.314	0.418
	LTE Band 19/25RB#0 10M	Edge 4	24075	21.76	23.00	1.330	0.181	0.241
	LTE Band 19/25RB#0 10M	Bottom Face	24050	21.73	23.00	1.340	0.740	0.991
	LTE Band 19/25RB#0 10M	Bottom Face	24100	21.72	23.00	1.343	0.751	1.008
	LTE Band 19/50RB#0 10M	Bottom Face	24075	21.65	23.00	1.365	0.662	0.903
Full Power								



	LTE Band 25/1RB#0 20M	Bottom Face	26365	23.29	24.50	1.321	0.206	0.272
	LTE Band 25/1RB#0 20M	Edge 1	26365	23.29	24.50	1.321	0.048	0.063
	LTE Band 25/1RB#0 20M	Edge 4	26365	23.29	24.50	1.321	0.026	0.034
	LTE Band 25/50RB#0 20M	Bottom Face	26365	22.38	23.50	1.294	0.160	0.207
	LTE Band 25/50RB#0 20M	Edge 1	26365	22.38	23.50	1.294	0.047	0.061
	LTE Band 25/50RB#0 20M	Edge 4	26365	22.38	23.50	1.294	0.021	0.027
Reduced Power								
10#	LTE Band 25/1RB#0 20M	Bottom Face	26365	15.79	17.00	1.321	0.795	1.050
	LTE Band 25/1RB#0 20M	Edge 1	26365	15.79	17.00	1.321	0.092	0.122
	LTE Band 25/1RB#0 20M	Edge 4	26365	15.79	17.00	1.321	0.237	0.313
	LTE Band 25/1RB#0 20M	Bottom Face	26140	15.66	17.00	1.361	0.738	1.005
	LTE Band 25/1RB#0 20M	Bottom Face	26590	15.75	17.00	1.334	0.707	0.943
	LTE Band 25/50RB#0 20M	Bottom Face	26365	14.88	16.00	1.294	0.733	0.949
	LTE Band 25/50RB#0 20M	Edge 1	26365	14.88	16.00	1.294	0.085	0.110
	LTE Band 25/50RB#0 20M	Edge 4	26365	14.88	16.00	1.294	0.218	0.282
	LTE Band 25/50RB#0 20M	Bottom Face	26140	14.73	16.00	1.340	0.679	0.910
	LTE Band 25/50RB#0 20M	Bottom Face	26590	14.82	16.00	1.312	0.650	0.853
	LTE Band 25/100RB#0 20M	Bottom Face	26365	14.85	16.00	1.303	0.691	0.900
Full Power								
	LTE Band 26/1RB#0 15M	Bottom Face	26865	23.21	24.50	1.346	0.142	0.191
	LTE Band 26/1RB#0 15M	Edge 1	26865	23.21	24.50	1.346	0.042	0.057
	LTE Band 26/1RB#0 15M	Edge 4	26865	23.21	24.50	1.346	0.030	0.040
	LTE Band 26/36RB#0 15M	Bottom Face	26865	22.34	23.00	1.164	0.113	0.132
	LTE Band 26/36RB#0 15M	Edge 1	26865	22.34	23.00	1.164	0.035	0.041
	LTE Band 26/36RB#0 15M	Edge 4	26865	22.34	23.00	1.164	0.022	0.026
Reduced Power								
	LTE Band 26/1RB#0 15M	Bottom Face	26865	21.21	22.50	1.346	0.844	1.136
	LTE Band 26/1RB#0 15M	Edge 1	26865	21.21	22.50	1.346	0.351	0.472
	LTE Band 26/1RB#0 15M	Edge 4	26865	21.21	22.50	1.346	0.233	0.314
11#	LTE Band 26/1RB#0 15M	Bottom Face	26765	21.18	22.50	1.355	0.857	1.161
	LTE Band 26/1RB#0 15M	Bottom Face	26965	21.13	22.50	1.371	0.832	1.141
	LTE Band 26/36RB#0 15M	Bottom Face	26865	20.34	21.00	1.164	0.709	0.825
	LTE Band 26/36RB#0 15M	Edge 1	26865	20.34	21.00	1.164	0.323	0.376
	LTE Band 26/36RB#0 15M	Edge 4	26865	20.34	21.00	1.164	0.214	0.249
	LTE Band 26/36RB#0 15M	Bottom Face	26765	20.28	21.00	1.180	0.788	0.930
	LTE Band 26/36RB#0 15M	Bottom Face	26965	20.19	21.00	1.205	0.765	0.922
	LTE Band 26/75RB#0 15M	Bottom Face	26765	20.19	21.00	1.205	0.662	0.798



Full Power								
	LTE Band 30/1RB#0 10M	Bottom Face	27710	23.71	24.50	1.199	0.079	0.095
	LTE Band 30/1RB#0 10M	Edge 1	27710	23.71	24.50	1.199	0.013	0.016
	LTE Band 30/1RB#0 10M	Edge 4	27710	23.71	24.50	1.199	0.184	0.221
	LTE Band 30/25RB#0 10M	Bottom Face	27710	22.66	23.50	1.213	0.067	0.081
	LTE Band 30/25RB#0 10M	Edge 1	27710	22.66	23.50	1.213	0.010	0.012
	LTE Band 30/25RB#0 10M	Edge 4	27710	22.66	23.50	1.213	0.143	0.174
Reduced Power								
12#	LTE Band 30/1RB#0 10M	Bottom Face	27710	14.71	15.50	1.199	0.715	0.858
	LTE Band 30/1RB#0 10M	Edge 1	27710	14.71	15.50	1.199	0.138	0.166
	LTE Band 30/1RB#0 10M	Edge 4	27710	14.71	15.50	1.199	0.150	0.180
	LTE Band 30/25RB#0 10M	Bottom Face	27710	13.66	14.50	1.213	0.572	0.694
	LTE Band 30/25RB#0 10M	Edge 1	27710	13.66	14.50	1.213	0.665	0.807
	LTE Band 30/25RB#0 10M	Edge 4	27710	13.66	14.50	1.213	0.140	0.170
	LTE Band 30/50RB#0 10M	Bottom Face	27710	13.56	14.50	1.242	0.502	0.623
Full Power (PC2)								
	LTE Band 41/1RB#0 20M	Bottom Face	41490	25.90	27.00	1.288	0.177	0.229
	LTE Band 41/1RB#0 20M	Edge 1	41490	25.90	27.00	1.288	0.206	0.267
	LTE Band 41/1RB#0 20M	Edge 2	41490	25.90	27.00	1.288	0.015	0.019
	LTE Band 41/1RB#0 20M	Edge 4	41490	25.90	27.00	1.288	0.093	0.121
	LTE Band 41/50RB#0 20M	Bottom Face	41490	24.96	26.00	1.271	0.175	0.224
	LTE Band 41/50RB#0 20M	Edge 1	41490	24.96	26.00	1.271	0.203	0.259
	LTE Band 41/50RB#0 20M	Edge 2	41490	24.96	26.00	1.271	0.014	0.018
	LTE Band 41/50RB#0 20M	Edge 4	41490	24.96	26.00	1.271	0.091	0.116
Reduced Power (PC2)								
	LTE Band 41/1RB#0 20M	Bottom Face	41490	16.40	17.50	1.288	0.539	0.699
	LTE Band 41/1RB#0 20M	Edge 1	41490	16.40	17.50	1.288	0.148	0.192
	LTE Band 41/1RB#0 20M	Edge 4	41490	16.40	17.50	1.288	0.046	0.060
	LTE Band 41/1RB#0 20M	Bottom Face	40620	16.36	17.50	1.300	0.599	0.783
	LTE Band 41/1RB#0 20M	Bottom Face	39750	16.34	17.50	1.306	0.364	0.478
	LTE Band 41/1RB#0 20M	Bottom Face	40185	16.36	17.50	1.300	0.345	0.451
	LTE Band 41/1RB#0 20M	Bottom Face	41055	16.28	17.50	1.324	0.334	0.445
	LTE Band 41/50RB#0 20M	Bottom Face	41490	15.46	16.50	1.271	0.496	0.634
	LTE Band 41/50RB#0 20M	Edge 1	41490	15.46	16.50	1.271	0.137	0.175
	LTE Band 41/50RB#0 20M	Edge 4	41490	15.46	16.50	1.271	0.042	0.054
	LTE Band 41/50RB#0 20M	Bottom Face	40620	15.36	16.50	1.300	0.551	0.721
	LTE Band 41/50RB#0 20M	Bottom Face	39750	15.43	16.50	1.279	0.335	0.431
	LTE Band 41/50RB#0 20M	Bottom Face	40185	15.45	16.50	1.274	0.318	0.407



	LTE Band 41/50RB#0 20M	Bottom Face	41055	15.33	16.50	1.309	0.308	0.406
Full Power (PC3)								
	LTE Band 41/1RB#0 20M	Bottom Face	41490	23.71	25.00	1.346	0.171	0.232
	LTE Band 41/1RB#0 20M	Edge 1	41490	23.71	25.00	1.346	0.203	0.275
	LTE Band 41/1RB#0 20M	Edge 2	41490	23.71	25.00	1.346	0.006	0.008
	LTE Band 41/1RB#0 20M	Edge 4	41490	23.71	25.00	1.346	0.092	0.125
	LTE Band 41/50RB#0 20M	Bottom Face	41490	22.80	24.00	1.318	0.167	0.221
	LTE Band 41/50RB#0 20M	Edge 1	41490	22.80	24.00	1.318	0.192	0.255
	LTE Band 41/50RB#0 20M	Edge 2	41490	22.80	24.00	1.318	0.006	0.008
	LTE Band 41/50RB#0 20M	Edge 4	41490	22.80	24.00	1.318	0.076	0.101
Reduced Power (PC3)								
	LTE Band 41/1RB#0 20M	Bottom Face	41490	14.71	16.00	1.346	0.663	0.898
	LTE Band 41/1RB#0 20M	Edge 1	41490	14.71	16.00	1.346	0.279	0.378
	LTE Band 41/1RB#0 20M	Edge 4	41490	14.71	16.00	1.346	0.074	0.100
13#	LTE Band 41/1RB#0 20M	Bottom Face	40620	14.59	16.00	1.384	0.691	0.962
	LTE Band 41/1RB#0 20M	Bottom Face	39750	14.64	16.00	1.368	0.620	0.853
	LTE Band 41/1RB#0 20M	Bottom Face	40185	14.68	16.00	1.355	0.661	0.901
	LTE Band 41/1RB#0 20M	Bottom Face	41055	14.56	16.00	1.393	0.625	0.876
	LTE Band 41/50RB#0 20M	Bottom Face	41490	13.80	15.00	1.318	0.598	0.793
	LTE Band 41/50RB#0 20M	Edge 1	41490	13.80	15.00	1.318	0.251	0.333
	LTE Band 41/50RB#0 20M	Edge 4	41490	13.80	15.00	1.318	0.067	0.089
	LTE Band 41/50RB#0 20M	Bottom Face	40620	13.68	15.00	1.355	0.624	0.851
	LTE Band 41/50RB#0 20M	Bottom Face	39750	13.75	15.00	1.334	0.560	0.751
	LTE Band 41/50RB#0 20M	Bottom Face	40185	13.77	15.00	1.327	0.597	0.797
	LTE Band 41/50RB#0 20M	Bottom Face	41055	13.70	15.00	1.349	0.564	0.765
	LTE Band 41/100RB#0 20M	Bottom Face	40620	13.72	15.00	1.343	0.497	0.671
	CA_41C/1RB#0 20M	Bottom Face	40521	13.75	15.00	1.334	0.544	0.730
Full Power								
	LTE Band 66/1RB#0 20M	Bottom Face	132322	23.31	24.50	1.315	0.203	0.267
	LTE Band 66/1RB#0 20M	Edge 1	132322	23.31	24.50	1.315	0.041	0.054
	LTE Band 66/1RB#0 20M	Edge 4	132322	23.31	24.50	1.315	0.060	0.079
	LTE Band 66/50RB#0 20M	Bottom Face	132322	22.32	23.50	1.312	0.157	0.206
	LTE Band 66/50RB#0 20M	Edge 1	132322	22.32	23.50	1.312	0.033	0.043
	LTE Band 66/50RB#0 20M	Edge 4	132322	22.32	23.50	1.312	0.045	0.059
Reduced Power								
	LTE Band 66/1RB#0 20M	Bottom Face	132322	16.81	18.00	1.315	0.843	1.109
	LTE Band 66/1RB#0 20M	Edge 1	132322	16.81	18.00	1.315	0.107	0.141



	LTE Band 66/1RB#0 20M	Edge 4	132322	16.81	18.00	1.315	0.173	0.228
14#	LTE Band 66/1RB#0 20M	Bottom Face	132072	16.64	18.00	1.368	0.846	1.157
	LTE Band 66/1RB#0 20M	Bottom Face	132572	16.80	18.00	1.318	0.869	1.146
	LTE Band 66/50RB#0 20M	Bottom Face	132322	15.82	17.00	1.312	0.820	1.076
	LTE Band 66/50RB#0 20M	Edge 1	132322	15.82	17.00	1.312	0.100	0.131
	LTE Band 66/50RB#0 20M	Edge 4	132322	15.82	17.00	1.312	0.161	0.211
	LTE Band 66/50RB#0 20M	Bottom Face	132072	15.76	17.00	1.330	0.737	0.981
	LTE Band 66/50RB#0 20M	Bottom Face	132572	15.77	17.00	1.327	0.808	1.073
	LTE Band 66/100RB#0 20M	Bottom Face	132322	15.70	17.00	1.349	0.705	0.951
Full Power								
	LTE Band 71/1RB#0 20M	Bottom Face	133297	23.22	24.50	1.343	0.070	0.094
	LTE Band 71/1RB#0 20M	Edge 1	133297	23.22	24.50	1.343	0.045	0.060
	LTE Band 71/1RB#0 20M	Edge 2	133297	23.22	24.50	1.343	0.080	0.107
	LTE Band 71/1RB#0 20M	Edge 4	133297	23.22	24.50	1.343	0.026	0.035
	LTE Band 71/50RB#0 20M	Bottom Face	133297	22.35	23.00	1.161	0.062	0.072
	LTE Band 71/50RB#0 20M	Edge 1	133297	22.35	23.00	1.161	0.034	0.039
	LTE Band 71/50RB#0 20M	Edge 2	133297	22.35	23.00	1.161	0.074	0.086
	LTE Band 71/50RB#0 20M	Edge 4	133297	22.35	23.00	1.161	0.021	0.024
Reduced Power								
15#	LTE Band 71/1RB#0 20M	Bottom Face	133297	22.72	24.00	1.343	0.782	1.050
	LTE Band 71/1RB#0 20M	Edge 1	133297	22.72	24.00	1.343	0.252	0.338
	LTE Band 71/1RB#0 20M	Edge 4	133297	22.72	24.00	1.343	0.306	0.411
	LTE Band 71/1RB#0 20M	Bottom Face	133197	22.66	24.00	1.361	0.733	0.998
	LTE Band 71/1RB#0 20M	Bottom Face	133397	22.70	24.00	1.349	0.748	1.009
	LTE Band 71/50RB#0 20M	Bottom Face	133297	21.85	22.50	1.161	0.734	0.853
	LTE Band 71/50RB#0 20M	Edge 1	133297	21.85	22.50	1.161	0.232	0.269
	LTE Band 71/50RB#0 20M	Edge 4	133297	21.85	22.50	1.161	0.282	0.328
	LTE Band 71/50RB#0 20M	Bottom Face	133197	21.79	22.50	1.178	0.718	0.846
	LTE Band 71/50RB#0 20M	Bottom Face	133397	21.78	22.50	1.180	0.710	0.838
	LTE Band 71/75RB#0 20M	Bottom Face	133297	21.81	22.50	1.172	0.582	0.682



➤ **WLAN/BT Body SAR**

Plot No.	Band/Mode	Test Position	CH.	Ave. Power (dBm)	Tune-up Limit (dBm)	Tune-up Scaling Factor	Meas. SAR1g (W/kg)	Reported SAR1g (W/kg)
Full Power								
	WLAN 2.4GHz/802.11b	Bottom Face	11	21.52	22.50	1.253	0.115	0.161
	WLAN 2.4GHz/802.11b	Edge 1	11	21.52	22.50	1.253	0.461	0.644
	WLAN 2.4GHz/802.11b	Edge 2	11	21.52	22.50	1.253	0.145	0.203
Reduced Power								
	WLAN 2.4GHz/802.11b	Bottom Face	11	17.52	18.50	1.253	0.718	1.003
	WLAN 2.4GHz/802.11b	Edge 1	11	17.52	18.50	1.253	0.461	0.644
	WLAN 2.4GHz/802.11b	Bottom Face	1	17.38	18.50	1.294	0.741	1.069
16#	WLAN 2.4GHz/802.11b	Bottom Face	6	17.51	18.50	1.256	0.790	1.106
Full Power								
	WLAN 5.2GHz/802.11n-HT40	Bottom Face	46	17.34	18.00	1.164	0.125	0.150
	WLAN 5.2GHz/802.11n-HT40	Edge 1	46	17.34	18.00	1.164	0.168	0.202
	WLAN 5.2GHz/802.11n-HT40	Edge 2	46	17.34	18.00	1.164	0.364	0.437
Reduced Power								
17#	WLAN 5.2GHz/802.11n-HT40	Bottom Face	46	15.84	16.50	1.164	0.884	1.062
	WLAN 5.2GHz/802.11n-HT40	Edge 1	46	15.84	16.50	1.164	0.168	0.202
	WLAN 5.2GHz/802.11n-HT40	Bottom Face	38	15.60	16.50	1.230	0.823	1.045
Full Power								
	WLAN5.3GHz/802.11n-HT40	Bottom Face	54	17.31	18.00	1.172	0.128	0.156
	WLAN5.3GHz/802.11n-HT40	Edge 1	54	17.31	18.00	1.172	0.095	0.116
	WLAN5.3GHz/802.11n-HT40	Edge 2	54	17.31	18.00	1.172	0.293	0.358
Reduced Power								
	WLAN5.3GHz/802.11n-HT40	Bottom Face	54	14.31	15.00	1.172	0.824	1.007
	WLAN5.3GHz/802.11n-HT40	Edge 1	54	14.31	15.00	1.172	0.095	0.116
18#	WLAN5.3GHz/802.11n-HT40	Bottom Face	62	14.29	15.00	1.178	0.865	1.062
Full Power								
	WLAN5.5GHz/802.11ac-VHT40	Bottom Face	126	18.93	20.00	1.279	0.059	0.078
	WLAN5.5GHz/802.11ac-VHT40	Edge 1	126	18.93	20.00	1.279	0.114	0.151
	WLAN5.5GHz/802.11ac-VHT40	Edge 2	126	18.93	20.00	1.279	0.212	0.280
Reduced Power								
	WLAN5.5GHz/802.11ac-VHT40	Bottom Face	126	15.43	16.50	1.279	0.513	0.677
	WLAN5.5GHz/802.11ac-VHT40	Edge 1	126	15.43	16.50	1.279	0.114	0.151
	WLAN5.5GHz/802.11ac-VHT40	Bottom Face	102	15.16	16.50	1.361	0.699	0.982
19#	WLAN5.5GHz/802.11ac-VHT40	Bottom Face	142	15.16	16.50	1.361	0.751	1.055
Full Power								



	WLAN5.8GHz/802.11ac-VHT40	Bottom Face	151	18.48	19.00	1.127	0.104	0.122
	WLAN5.8GHz/802.11ac-VHT40	Edge 1	151	18.48	19.00	1.127	0.261	0.307
	WLAN5.8GHz/802.11ac-VHT40	Edge 2	151	18.48	19.00	1.127	0.258	0.303
Reduced Power								
	WLAN5.8GHz/802.11ac-VHT40	Bottom Face	151	16.48	17.00	1.127	0.642	0.755
	WLAN5.8GHz/802.11ac-VHT40	Edge 1	151	16.48	17.00	1.127	0.261	0.307
20#	WLAN5.8GHz/802.11ac-VHT40	Bottom Face	159	16.43	17.00	1.140	0.735	0.874
Full Power								
	Bluetooth/DH5	Bottom Face	78	8.41	9.00	1.146	0.034	0.042
	Bluetooth/DH5	Edge 1	78	8.41	9.00	1.146	0.025	0.031
	Bluetooth/DH5	Bottom Face	0	7.20	8.00	1.202	0.031	0.040
21#	Bluetooth/DH5	Bottom Face	39	6.88	8.00	1.294	0.037	0.052

Note:

1. Per KDB 447498 D01v06, for each exposure position, if the highest output channel Reported SAR $\leq 0.8\text{W/kg}$, other channels SAR testing is not necessary.
2. Additional WLAN SAR testing was performed for simultaneous transmission analysis.
3. Per KDB 865664 D01v01r04, for each frequency band, repeated SAR measurement is required when the measured SAR is $\geq 0.8\text{W/kg}$.
4. Per KDB248227 D01v02r02, OFDM SAR is not required when the highest reported SAR for DSSS is adjusted by the ratio of OFDM to DSSS specified maximum output power and the adjusted SAR is $\leq 1.2\text{ W/kg}$.
5. According to KDB 865664 D02v01r02, SAR plot is required for the highest measured SAR in each exposure configuration, wireless mode and frequency band combination.
6. The WLAN Reported 1g SAR (W/kg) should be scaled with the duty cycle scaling factor 1.115 for 802.11b, 802.11 n40 with 1.043 and 802.11ac40 with 1.032.
7. According to 2016 Oct. TCB workshop for Bluetooth SAR consideration and the theoretical duty cycle is 83.3%, therefore the actual duty cycle will be scaled up to the theoretical value of Bluetooth reported SAR calculation. The duty cycle of Bluetooth is 77.01%, therefore the duty cycle scaling factor 1.082 should be used to calculating the reported SAR.



16.3 Repeated SAR Assessment

In accordance with published RF Exposure KDB procedure 865664 D01 SAR measurement 100 MHz to 6 GHz. These additional measurements are repeated after the completion of all measurements requiring the same head or body tissue-equivalent medium in a frequency band. The test device should be returned to ambient conditions (normal room temperature) with the battery fully charged before it is re-mounted on the device holder for the repeated measurement(s) to minimize any unexpected variations in the repeated results.

1. Repeated measurement is not required when the original highest measured SAR is < 0.80 W/kg;
2. When the original highest measured SAR is ≥ 0.80 W/kg, repeat that measurement once.
3. Perform a second repeated measurement only if the ratio of largest to smallest SAR for the original and first repeated measurements is > 1.20 or when the original or repeated measurement is ≥ 1.45 W/kg ($\sim 10\%$ from the 1-g SAR limit).
4. Perform a third repeated measurement only if the original, first or second repeated measurement is ≥ 1.5 W/kg and the ratio of largest to smallest SAR for the original, first and second repeated measurements is > 1.20 .

➤ Repeated SAR

Plot No.	Band/Mode	Test Position	CH.	Ave. Power (dBm)	Tune-up Limit (dBm)	Tune-up Scaling Factor	Meas. SAR1g (W/kg)	Reported SAR1g (W/kg)
Reduced Power								
OR.	Band II/RMC 12.2Kbps	Bottom Face	9262	16.11	17.00	1.227	0.835	1.025
1st	Band II/RMC 12.2Kbps	Bottom Face	9262	16.11	17.00	1.227	0.801	0.983
Reduced Power								
OR.	LTE Band 12/1RB#0 10M	Bottom Face	23095	22.88	24.00	1.294	0.916	1.185
1st	LTE Band 12/1RB#0 10M	Bottom Face	23095	22.88	24.00	1.294	0.903	1.169
Reduced Power								
OR.	LTE Band 13/1RB#0 10M	Bottom Face	23230	22.40	23.50	1.288	0.931	1.199
1st	LTE Band 13/1RB#0 10M	Bottom Face	23230	22.40	23.50	1.288	0.915	1.179
Reduced Power								
OR.	LTE Band 14/1RB#0 10M	Bottom Face	23330	20.69	21.50	1.205	0.851	1.025
1st	LTE Band 14/1RB#0 10M	Bottom Face	23330	20.69	21.50	1.205	0.825	0.994
Reduced Power								
OR.	LTE Band 18/1RB#0 10M	Bottom Face	23925	23.15	24.50	1.365	0.842	1.149
1st	LTE Band 18/1RB#0 10M	Bottom Face	23925	23.15	24.50	1.365	0.833	1.137
Reduced Power								
OR.	LTE Band 19/1RB#0 10M	Bottom Face	24075	22.64	24.00	1.368	0.804	1.100



1st	LTE Band 19/1RB#0 10M	Bottom Face	24075	22.64	24.00	1.368	0.779	1.065
Reduced Power								
OR.	LTE Band 26/1RB#0 15M	Bottom Face	26765	21.18	22.50	1.355	0.857	1.161
1st	LTE Band 26/1RB#0 15M	Bottom Face	26765	21.18	22.50	1.355	0.825	1.118
Reduced Power								
OR.	LTE Band 66/1RB#0 20M	Bottom Face	132072	16.64	18.00	1.368	0.846	1.157
1st	LTE Band 66/1RB#0 20M	Bottom Face	132072	16.64	18.00	1.368	0.823	1.126
Reduced Power								
OR.	WLAN 2.4GHz/802.11b	Bottom Face	6	17.51	18.50	1.256	0.790	1.106
1st	WLAN 2.4GHz/802.11b	Bottom Face	6	17.51	18.50	1.256	0.779	1.091
Reduced Power								
OR.	WLAN 5.2GHz/802.11n-HT40	Bottom Face	46	15.84	16.50	1.164	0.884	1.062
1st	WLAN 5.2GHz/802.11n-HT40	Bottom Face	46	15.84	16.50	1.164	0.824	0.990
Reduced Power								
OR.	WLAN5.3GHz/802.11 n-HT40	Bottom Face	62	14.29	15.00	1.178	0.865	1.062
1st	WLAN5.3GHz/802.11 n-HT40	Bottom Face	62	14.29	15.00	1.178	0.843	1.035



17 Simultaneous Transmission Analysis

17.1 Simultaneous Transmission Consideration

No.	Simultaneous Transmission Consideration	Exposure Position
		Body
1	WWAN + WLAN 2.4GHz/5GHz	Yes
2	WWAN + Bluetooth	Yes

Note:

1. Simultaneous Transmission SAR evaluation is not required for BT and WLAN, because the software mechanism have been incorporated to guarantee that the WLAN and Bluetooth transmitters would not simultaneously operate at the same time.
2. Per KDB 447498D01v06, simultaneous transmission SAR evaluation procedures is as followed:

Step 1: If sum of 1 g SAR <1.6 W/kg, Simultaneous SAR measurement is not required.
Step 2: If sum of 1 g SAR >1.6 W/kg, ratio of SAR to peak separation distance for pair of transmitters calculated.
Step 3: If the ratio of SAR to peak separation distance is ≤ 0.04 , Simultaneous SAR measurement is not required.
Step 4: If the ratio of SAR to peak separation distance is > 0.04 , Simultaneous SAR measurement is required and simultaneous transmission SAR value is calculated.
(The ratio is determined by: $(SAR_1 + SAR_2) \wedge 1.5/R_i \leq 0.04$,
 R_i is the separation distance between the peak SAR locations for the antenna pair in mm.)
3. This product's NFC do not support simultaneous transmission, so simultaneous transmission of NFC is not required.

17.2 Simultaneous Transmission Analysis

➤ Body Simultaneous Transmission for WWAN + WLAN 2.4GHz

WWAN Band	Exposure Position	1	2	1+2 Summed 1g SAR (W/kg)
		WWAN	2.4GHz WLAN	
		1g SAR (W/kg)	1g SAR (W/kg)	
WCDMA II	Bottom Face at 28mm	0.262	1.106	1.368
	Edge 1 at 20mm	0.047	0.644	0.691
	Edge 4 at 15mm	0.039	0.000	0.039
	Bottom Face at 0mm	1.025	1.106	2.131
	Edge 1 at 0mm	0.103	0.644	0.747
	Edge 2 at 0mm	0.000	0.203	0.203
	Edge 4 at 0mm	0.133	0.000	0.133
WCDMA IV	Bottom Face at 28mm	0.206	1.106	1.312
	Edge 1 at 20mm	0.048	0.644	0.692
	Edge 4 at 15mm	0.038	0.000	0.038
	Bottom Face at 0mm	0.940	1.106	2.046
	Edge 1 at 0mm	0.107	0.644	0.751
	Edge 2 at 0mm	0.000	0.203	0.203
	Edge 4 at 0mm	0.127	0.000	0.127
WCDMA V	Bottom Face at 28mm	0.078	1.106	1.184
	Edge 1 at 20mm	0.053	0.644	0.697
	Edge 4 at 15mm	0.040	0.000	0.040
	Bottom Face at 0mm	0.982	1.106	2.088
	Edge 1 at 0mm	0.380	0.644	1.024
	Edge 2 at 0mm	0.000	0.203	0.203
	Edge 4 at 0mm	0.330	0.000	0.330
LTE Band 7	Bottom Face at 28mm	0.405	1.106	1.511
	Edge 1 at 20mm	0.360	0.644	1.004
	Edge 4 at 15mm	0.241	0.000	0.241
	Bottom Face at 0mm	0.963	1.106	2.069
	Edge 1 at 0mm	0.395	0.644	1.039
	Edge 2 at 0mm	0.078	0.203	0.281
	Edge 4 at 0mm	0.443	0.000	0.443
LTE Band 12/17	Bottom Face at 28mm	0.151	1.106	1.257
	Edge 1 at 20mm	0.075	0.644	0.719



	Edge 4 at 15mm	0.048	0.000	0.048
	Bottom Face at 0mm	1.185	1.106	2.291
	Edge 1 at 0mm	0.366	0.644	1.010
	Edge 2 at 0mm	0.232	0.203	0.435
	Edge 4 at 0mm	0.506	0.000	0.506
LTE Band 13	Bottom Face at 28mm	0.152	1.106	1.258
	Edge 1 at 20mm	0.055	0.644	0.699
	Edge 4 at 15mm	0.036	0.000	0.036
	Bottom Face at 0mm	1.199	1.106	2.305
	Edge 1 at 0mm	0.392	0.644	1.036
	Edge 2 at 0mm	0.392	0.203	0.595
	Edge 4 at 0mm	0.345	0.000	0.345
LTE Band 14	Bottom Face at 28mm	0.141	1.106	1.247
	Edge 1 at 20mm	0.053	0.644	0.697
	Edge 4 at 15mm	0.037	0.000	0.037
	Bottom Face at 0mm	1.025	1.106	2.131
	Edge 1 at 0mm	0.386	0.644	1.030
	Edge 2 at 0mm	0.386	0.203	0.589
	Edge 4 at 0mm	0.282	0.000	0.282
LTE Band 18	Bottom Face at 28mm	0.000	1.106	1.106
	Edge 1 at 20mm	0.000	0.644	0.644
	Edge 4 at 15mm	0.000	0.000	0.000
	Bottom Face at 0mm	1.149	1.106	2.255
	Edge 1 at 0mm	0.405	0.644	1.049
	Edge 2 at 0mm	0.000	0.203	0.203
	Edge 4 at 0mm	0.250	0.000	0.250
LTE Band 19	Bottom Face at 28mm	0.146	1.106	1.252
	Edge 1 at 20mm	0.056	0.644	0.700
	Edge 4 at 15mm	0.040	0.000	0.040
	Bottom Face at 0mm	1.100	1.106	2.206
	Edge 1 at 0mm	0.451	0.644	1.095
	Edge 2 at 0mm	0.000	0.203	0.203
	Edge 4 at 0mm	0.260	0.000	0.260
LTE Band 25/2	Bottom Face at 28mm	0.272	1.106	1.378
	Edge 1 at 20mm	0.063	0.644	0.707
	Edge 4 at 15mm	0.034	0.000	0.034
	Bottom Face at 0mm	1.050	1.106	2.156
	Edge 1 at 0mm	0.122	0.644	0.766



	Edge 2 at 0mm	0.000	0.203	0.203
	Edge 4 at 0mm	0.313	0.000	0.313
LTE Band 26/5	Bottom Face at 28mm	0.191	1.106	1.297
	Edge 1 at 20mm	0.057	0.644	0.701
	Edge 4 at 15mm	0.040	0.000	0.040
	Bottom Face at 0mm	1.161	1.106	2.267
	Edge 1 at 0mm	0.472	0.644	1.116
	Edge 2 at 0mm	0.000	0.203	0.203
	Edge 4 at 0mm	0.314	0.000	0.314
LTE Band 30	Bottom Face at 28mm	0.095	1.106	1.201
	Edge 1 at 20mm	0.016	0.644	0.660
	Edge 4 at 15mm	0.221	0.000	0.221
	Bottom Face at 0mm	0.858	1.106	1.964
	Edge 1 at 0mm	0.807	0.644	1.451
	Edge 2 at 0mm	0.000	0.203	0.203
	Edge 4 at 0mm	0.180	0.000	0.180
LTE Band 41 (PC2)	Bottom Face at 28mm	0.224	1.106	1.330
	Edge 1 at 20mm	0.267	0.644	0.911
	Edge 4 at 15mm	0.121	0.000	0.121
	Bottom Face at 0mm	0.783	1.106	1.889
	Edge 1 at 0mm	0.192	0.644	0.836
	Edge 2 at 0mm	0.019	0.203	0.222
	Edge 4 at 0mm	0.060	0.000	0.060
LTE Band 41 (PC3)	Bottom Face at 28mm	0.232	1.106	1.338
	Edge 1 at 20mm	0.275	0.644	0.919
	Edge 4 at 15mm	0.125	0.000	0.125
	Bottom Face at 0mm	0.962	1.106	2.068
	Edge 1 at 0mm	0.378	0.644	1.022
	Edge 2 at 0mm	0.008	0.203	0.211
	Edge 4 at 0mm	0.100	0.000	0.100
LTE Band 66/4	Bottom Face at 28mm	0.267	1.106	1.373
	Edge 1 at 20mm	0.054	0.644	0.698
	Edge 4 at 15mm	0.079	0.000	0.079
	Bottom Face at 0mm	1.157	1.106	2.263
	Edge 1 at 0mm	0.141	0.644	0.785
	Edge 2 at 0mm	0.000	0.203	0.203
	Edge 4 at 0mm	0.228	0.000	0.228
LTE Band 71	Bottom Face at 28mm	0.094	1.106	1.200



	Edge 1 at 20mm	0.060	0.644	0.704
	Edge 4 at 15mm	0.035	0.000	0.035
	Bottom Face at 0mm	1.050	1.106	2.156
	Edge 1 at 0mm	0.338	0.644	0.982
	Edge 2 at 0mm	0.107	0.203	0.310
	Edge 4 at 0mm	0.411	0.000	0.411

➤ **Body Simultaneous Transmission for WWAN + WLAN 5GHz**

WWAN Band	Exposure Position	1	2	1+2 Summed 1g SAR (W/kg)
		WWAN	5GHz WLAN	
		1g SAR (W/kg)	1g SAR (W/kg)	
WCDMA II	Bottom Face at 28mm	0.262	1.062	1.324
	Edge 1 at 20mm	0.047	0.307	0.354
	Edge 4 at 15mm	0.039	0.000	0.039
	Bottom Face at 0mm	1.025	1.062	2.087
	Edge 1 at 0mm	0.103	0.307	0.410
	Edge 2 at 0mm	0.000	0.437	0.437
	Edge 4 at 0mm	0.133	0.000	0.133
WCDMA IV	Bottom Face at 28mm	0.206	1.062	1.268
	Edge 1 at 20mm	0.048	0.307	0.355
	Edge 4 at 15mm	0.038	0.000	0.038
	Bottom Face at 0mm	0.940	1.062	2.002
	Edge 1 at 0mm	0.107	0.307	0.414
	Edge 2 at 0mm	0.000	0.437	0.437
	Edge 4 at 0mm	0.127	0.000	0.127
WCDMA V	Bottom Face at 28mm	0.078	1.062	1.140
	Edge 1 at 20mm	0.053	0.307	0.360
	Edge 4 at 15mm	0.040	0.000	0.040
	Bottom Face at 0mm	0.982	1.062	2.044
	Edge 1 at 0mm	0.380	0.307	0.687
	Edge 2 at 0mm	0.000	0.437	0.437
	Edge 4 at 0mm	0.330	0.000	0.330
LTE Band 7	Bottom Face at 28mm	0.405	1.062	1.467
	Edge 1 at 20mm	0.360	0.307	0.667
	Edge 4 at 15mm	0.241	0.000	0.241
	Bottom Face at 0mm	0.963	1.062	2.025



	Edge 1 at 0mm	0.395	0.307	0.702
	Edge 2 at 0mm	0.078	0.437	0.515
	Edge 4 at 0mm	0.443	0.000	0.443
LTE Band 12/17	Bottom Face at 28mm	0.151	1.062	1.213
	Edge 1 at 20mm	0.075	0.307	0.382
	Edge 4 at 15mm	0.048	0.000	0.048
	Bottom Face at 0mm	1.185	1.062	2.247
	Edge 1 at 0mm	0.366	0.307	0.673
	Edge 2 at 0mm	0.232	0.437	0.669
	Edge 4 at 0mm	0.506	0.000	0.506
LTE Band 13	Bottom Face at 28mm	0.152	1.062	1.214
	Edge 1 at 20mm	0.055	0.307	0.362
	Edge 4 at 15mm	0.036	0.000	0.036
	Bottom Face at 0mm	1.199	1.062	2.261
	Edge 1 at 0mm	0.392	0.307	0.699
	Edge 2 at 0mm	0.392	0.437	0.829
	Edge 4 at 0mm	0.345	0.000	0.345
LTE Band 14	Bottom Face at 28mm	0.141	1.062	1.203
	Edge 1 at 20mm	0.053	0.307	0.360
	Edge 4 at 15mm	0.037	0.000	0.037
	Bottom Face at 0mm	1.025	1.062	2.087
	Edge 1 at 0mm	0.386	0.307	0.693
	Edge 2 at 0mm	0.386	0.437	0.823
	Edge 4 at 0mm	0.282	0.000	0.282
LTE Band 18	Bottom Face at 28mm	0.000	1.062	1.062
	Edge 1 at 20mm	0.000	0.307	0.307
	Edge 4 at 15mm	0.000	0.000	0.000
	Bottom Face at 0mm	1.149	1.062	2.211
	Edge 1 at 0mm	0.405	0.307	0.712
	Edge 2 at 0mm	0.000	0.437	0.437
	Edge 4 at 0mm	0.250	0.000	0.250
LTE Band 19	Bottom Face at 28mm	0.146	1.062	1.208
	Edge 1 at 20mm	0.056	0.307	0.363
	Edge 4 at 15mm	0.040	0.000	0.040
	Bottom Face at 0mm	1.100	1.062	2.162
	Edge 1 at 0mm	0.451	0.307	0.758
	Edge 2 at 0mm	0.000	0.437	0.437
	Edge 4 at 0mm	0.260	0.000	0.260



LTE Band 25/2	Bottom Face at 28mm	0.272	1.062	1.334
	Edge 1 at 20mm	0.063	0.307	0.370
	Edge 4 at 15mm	0.034	0.000	0.034
	Bottom Face at 0mm	1.050	1.062	2.112
	Edge 1 at 0mm	0.122	0.307	0.429
	Edge 2 at 0mm	0.000	0.437	0.437
	Edge 4 at 0mm	0.313	0.000	0.313
LTE Band 26/5	Bottom Face at 28mm	0.191	1.062	1.253
	Edge 1 at 20mm	0.057	0.307	0.364
	Edge 4 at 15mm	0.040	0.000	0.040
	Bottom Face at 0mm	1.161	1.062	2.223
	Edge 1 at 0mm	0.472	0.307	0.779
	Edge 2 at 0mm	0.000	0.437	0.437
	Edge 4 at 0mm	0.314	0.000	0.314
LTE Band 30	Bottom Face at 28mm	0.095	1.062	1.157
	Edge 1 at 20mm	0.016	0.307	0.323
	Edge 4 at 15mm	0.221	0.000	0.221
	Bottom Face at 0mm	0.858	1.062	1.920
	Edge 1 at 0mm	0.807	0.307	1.114
	Edge 2 at 0mm	0.000	0.437	0.437
	Edge 4 at 0mm	0.180	0.000	0.180
LTE Band 41 (PC2)	Bottom Face at 28mm	0.224	1.062	1.286
	Edge 1 at 20mm	0.267	0.307	0.574
	Edge 4 at 15mm	0.121	0.000	0.121
	Bottom Face at 0mm	0.783	1.062	1.845
	Edge 1 at 0mm	0.192	0.307	0.499
	Edge 2 at 0mm	0.019	0.437	0.456
	Edge 4 at 0mm	0.060	0.000	0.060
LTE Band 41 (PC3)	Bottom Face at 28mm	0.232	1.062	1.294
	Edge 1 at 20mm	0.275	0.307	0.582
	Edge 4 at 15mm	0.125	0.000	0.125
	Bottom Face at 0mm	0.962	1.062	2.024
	Edge 1 at 0mm	0.378	0.307	0.685
	Edge 2 at 0mm	0.008	0.437	0.445
	Edge 4 at 0mm	0.100	0.000	0.100
LTE Band 66/4	Bottom Face at 28mm	0.267	1.062	1.329
	Edge 1 at 20mm	0.054	0.307	0.361
	Edge 4 at 15mm	0.079	0.000	0.079

	Bottom Face at 0mm	1.157	1.062	2.219
	Edge 1 at 0mm	0.141	0.307	0.448
	Edge 2 at 0mm	0.000	0.437	0.437
	Edge 4 at 0mm	0.228	0.000	0.228
LTE Band 71	Bottom Face at 28mm	0.094	1.062	1.156
	Edge 1 at 20mm	0.060	0.307	0.367
	Edge 4 at 15mm	0.035	0.000	0.035
	Bottom Face at 0mm	1.050	1.062	2.112
	Edge 1 at 0mm	0.338	0.307	0.645
	Edge 2 at 0mm	0.107	0.437	0.544
	Edge 4 at 0mm	0.411	0.000	0.411

➤ **Body Simultaneous Transmission for WWAN + Bluetooth**

WWAN Band	Exposure Position	1	2	1+2 Summed 1g SAR (W/kg)
		WWAN	Bluetooth	
		1g SAR (W/kg)	1g SAR (W/kg)	
WCDMA II	Bottom Face at 28mm	0.262	0.052	0.314
	Edge 1 at 20mm	0.047	0.031	0.078
	Edge 4 at 15mm	0.039	0.000	0.039
	Bottom Face at 0mm	1.025	0.052	1.077
	Edge 1 at 0mm	0.103	0.031	0.134
	Edge 2 at 0mm	0.000	0.000	0.000
	Edge 4 at 0mm	0.133	0.000	0.133
WCDMA IV	Bottom Face at 28mm	0.206	0.052	0.258
	Edge 1 at 20mm	0.048	0.031	0.079
	Edge 4 at 15mm	0.038	0.000	0.038
	Bottom Face at 0mm	0.940	0.052	0.992
	Edge 1 at 0mm	0.107	0.031	0.138
	Edge 2 at 0mm	0.000	0.000	0.000
	Edge 4 at 0mm	0.127	0.000	0.127
WCDMA V	Bottom Face at 28mm	0.078	0.052	0.130
	Edge 1 at 20mm	0.053	0.031	0.084
	Edge 4 at 15mm	0.040	0.000	0.040
	Bottom Face at 0mm	0.982	0.052	1.034
	Edge 1 at 0mm	0.380	0.031	0.411
	Edge 2 at 0mm	0.000	0.000	0.000



	Edge 4 at 0mm	0.330	0.000	0.330
LTE Band 7	Bottom Face at 28mm	0.405	0.052	0.457
	Edge 1 at 20mm	0.360	0.031	0.391
	Edge 4 at 15mm	0.241	0.000	0.241
	Bottom Face at 0mm	0.963	0.052	1.015
	Edge 1 at 0mm	0.395	0.031	0.426
	Edge 2 at 0mm	0.078	0.000	0.078
	Edge 4 at 0mm	0.443	0.000	0.443
LTE Band 12/17	Bottom Face at 28mm	0.151	0.052	0.203
	Edge 1 at 20mm	0.075	0.031	0.106
	Edge 4 at 15mm	0.048	0.000	0.048
	Bottom Face at 0mm	1.185	0.052	1.237
	Edge 1 at 0mm	0.366	0.031	0.397
	Edge 2 at 0mm	0.232	0.000	0.232
	Edge 4 at 0mm	0.506	0.000	0.506
LTE Band 13	Bottom Face at 28mm	0.152	0.052	0.204
	Edge 1 at 20mm	0.055	0.031	0.086
	Edge 4 at 15mm	0.036	0.000	0.036
	Bottom Face at 0mm	1.199	0.052	1.251
	Edge 1 at 0mm	0.392	0.031	0.423
	Edge 2 at 0mm	0.392	0.000	0.392
	Edge 4 at 0mm	0.345	0.000	0.345
LTE Band 14	Bottom Face at 28mm	0.141	0.052	0.193
	Edge 1 at 20mm	0.053	0.031	0.084
	Edge 4 at 15mm	0.037	0.000	0.037
	Bottom Face at 0mm	1.025	0.052	1.077
	Edge 1 at 0mm	0.386	0.031	0.417
	Edge 2 at 0mm	0.386	0.000	0.386
	Edge 4 at 0mm	0.282	0.000	0.282
LTE Band 18	Bottom Face at 28mm	0.000	0.052	0.052
	Edge 1 at 20mm	0.000	0.031	0.031
	Edge 4 at 15mm	0.000	0.000	0.000
	Bottom Face at 0mm	1.149	0.052	1.201
	Edge 1 at 0mm	0.405	0.031	0.436
	Edge 2 at 0mm	0.000	0.000	0.000
	Edge 4 at 0mm	0.250	0.000	0.250
LTE Band 19	Bottom Face at 28mm	0.146	0.052	0.198
	Edge 1 at 20mm	0.056	0.031	0.087



	Edge 4 at 15mm	0.040	0.000	0.040
	Bottom Face at 0mm	1.100	0.052	1.152
	Edge 1 at 0mm	0.451	0.031	0.482
	Edge 2 at 0mm	0.000	0.000	0.000
	Edge 4 at 0mm	0.260	0.000	0.260
LTE Band 25/2	Bottom Face at 28mm	0.272	0.052	0.324
	Edge 1 at 20mm	0.063	0.031	0.094
	Edge 4 at 15mm	0.034	0.000	0.034
	Bottom Face at 0mm	1.050	0.052	1.102
	Edge 1 at 0mm	0.122	0.031	0.153
	Edge 2 at 0mm	0.000	0.000	0.000
	Edge 4 at 0mm	0.313	0.000	0.313
LTE Band 26/5	Bottom Face at 28mm	0.191	0.052	0.243
	Edge 1 at 20mm	0.057	0.031	0.088
	Edge 4 at 15mm	0.040	0.000	0.040
	Bottom Face at 0mm	1.161	0.052	1.213
	Edge 1 at 0mm	0.472	0.031	0.503
	Edge 2 at 0mm	0.000	0.000	0.000
	Edge 4 at 0mm	0.314	0.000	0.314
LTE Band 30	Bottom Face at 28mm	0.095	0.052	0.147
	Edge 1 at 20mm	0.016	0.031	0.047
	Edge 4 at 15mm	0.221	0.000	0.221
	Bottom Face at 0mm	0.858	0.052	0.910
	Edge 1 at 0mm	0.807	0.031	0.838
	Edge 2 at 0mm	0.000	0.000	0.000
	Edge 4 at 0mm	0.180	0.000	0.180
LTE Band 41 (PC2)	Bottom Face at 28mm	0.224	0.052	0.276
	Edge 1 at 20mm	0.267	0.031	0.298
	Edge 4 at 15mm	0.121	0.000	0.121
	Bottom Face at 0mm	0.783	0.052	0.835
	Edge 1 at 0mm	0.192	0.031	0.223
	Edge 2 at 0mm	0.019	0.000	0.019
	Edge 4 at 0mm	0.060	0.000	0.060
LTE Band 41 (PC3)	Bottom Face at 28mm	0.232	0.052	0.284
	Edge 1 at 20mm	0.275	0.031	0.306
	Edge 4 at 15mm	0.125	0.000	0.125
	Bottom Face at 0mm	0.962	0.052	1.014
	Edge 1 at 0mm	0.378	0.031	0.409



	Edge 2 at 0mm	0.008	0.000	0.008
	Edge 4 at 0mm	0.100	0.000	0.100
LTE Band 66/4	Bottom Face at 28mm	0.267	0.052	0.319
	Edge 1 at 20mm	0.054	0.031	0.085
	Edge 4 at 15mm	0.079	0.000	0.079
	Bottom Face at 0mm	1.157	0.052	1.209
	Edge 1 at 0mm	0.141	0.031	0.172
	Edge 2 at 0mm	0.000	0.000	0.000
	Edge 4 at 0mm	0.228	0.000	0.228
LTE Band 71	Bottom Face at 28mm	0.094	0.052	0.146
	Edge 1 at 20mm	0.060	0.031	0.091
	Edge 4 at 15mm	0.035	0.000	0.035
	Bottom Face at 0mm	1.050	0.052	1.102
	Edge 1 at 0mm	0.338	0.031	0.369
	Edge 2 at 0mm	0.107	0.000	0.107
	Edge 4 at 0mm	0.411	0.000	0.411

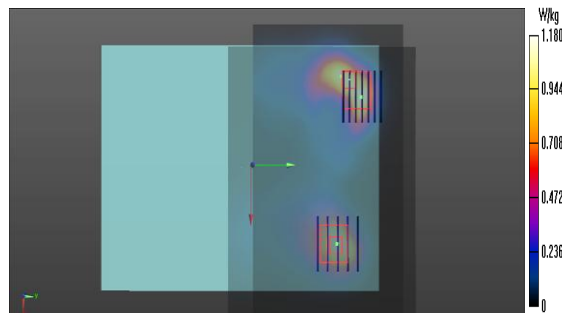
17.3 SPLSR Assessment and Analysis

➤ General Guidance

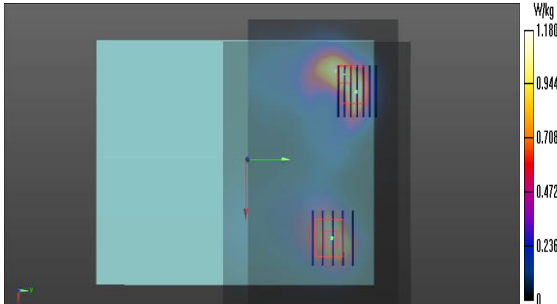
1. Per KDB 447498, When standalone SAR is measured, the peak location is determined by the x, y, z coordinates of the extrapolated and interpolated results reported by the zoom scan measurement, or area scan measurement when area scan based 1-g SAR estimation is applicable.
2. When standalone SAR is measured for both antennas in the pair, the peak location separation distance is computed by the square root of $[(x_1 - x_2)^2 + (y_1 - y_2)^2 + (z_1 - z_2)^2]$, where (x_1, y_1, z_1) and (x_2, y_2, z_2) are the coordinates in the area scans or extrapolated peak SAR locations in the zoom scans, as appropriate.
3. The ratio is determined by $(SAR_1 + SAR_2)^{1.5}/R_i$, rounded to two decimal digits, and must be ≤ 0.04 for all antenna pairs in the configuration to qualify for 1-g SAR test exclusion.
4. In this report, the minimum distance between the spatially separated antenna and the closest antenna of the co-located antenna pair to be conservative value for the calculation of SPLSR per TCB WS publication in Apr. 2022.

➤ SPLSR Analysis Results

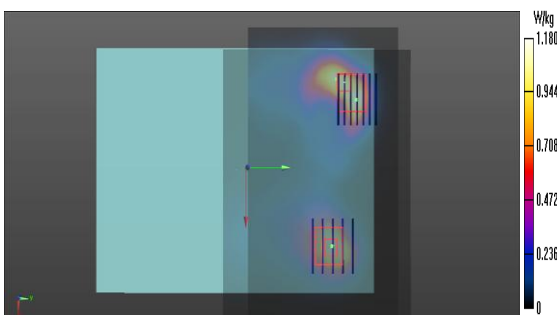
Band	Position	SAR (W/kg)	Gap (cm)	SAR peak location (cm)			3D distance (mm)	Summed SAR (W/kg)	SPLSR Results	Simultaneous SAR
				X	Y	Z				
WB2	Bottom	1.025	0	0.0565	0.114	-0.146	82.6	2.13	0.04	Not required
2.4G	Face	1.106	0	-0.035	0.111	-0.146				



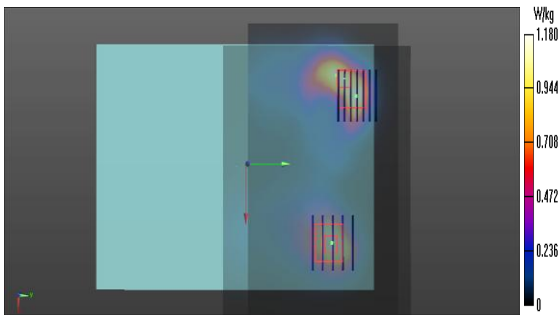
Band	Position	SAR (W/kg)	Gap	SAR peak location (cm)			3D distance (mm)	Summed SAR (W/kg)	SPLSR Results	Simultaneous SAR
			(cm)	X	Y	Z				
WB2	Bottom	1.025	0	0.0565	0.114	-0.146	100.5	2.09	0.03	Not required
5G	Face	1.062	0	-0.043	0.1	-0.148				



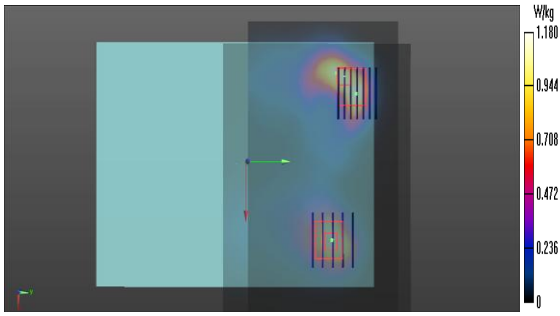
Band	Position	SAR (W/kg)	Gap	SAR peak location (cm)			3D distance (mm)	Summed SAR (W/kg)	SPLSR Results	Simultaneous SAR
			(cm)	X	Y	Z				
WB4	Bottom	0.94	0	0.06	0.11	-0.146	86.0	2.05	0.03	Not required
2.4G	Face	1.106	0	-0.035	0.111	-0.146				



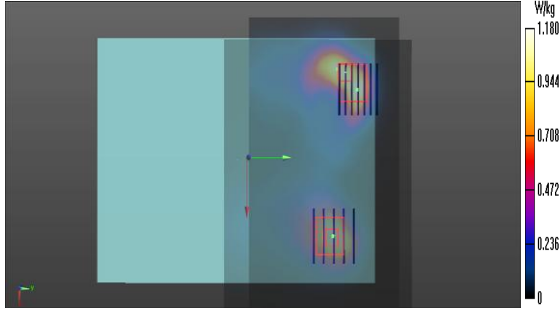
Band	Position	SAR (W/kg)	Gap	SAR peak location (cm)			3D distance (mm)	Summed SAR (W/kg)	SPLSR Results	Simultaneous SAR
			(cm)	X	Y	Z				
WB4	Bottom	0.94	0	0.06	0.11	-0.146	103.5	2.00	0.03	Not required
5G	Face	1.062	0	-0.043	0.1	-0.148				



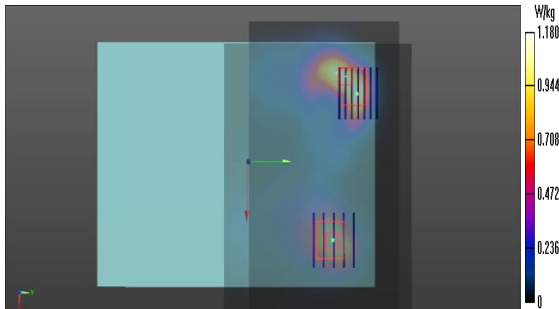
Band	Position	SAR (W/kg)	Gap	SAR peak location (cm)			3D distance (mm)	Summed SAR (W/kg)	SPLSR Results	Simultaneous SAR
			(cm)	X	Y	Z				
WB5	Bottom	0.982	0	0.063	0.11	-0.146	89.0	2.09	0.03	Not required
2.4G	Face	1.106	0	-0.035	0.111	-0.146				



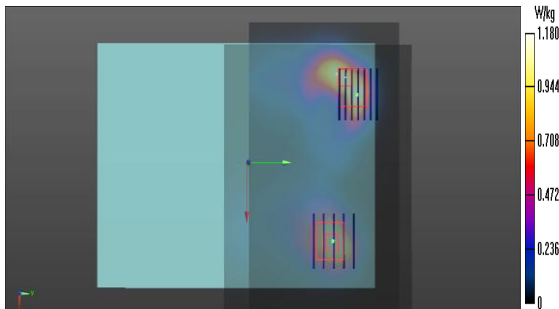
Band	Position	SAR (W/kg)	Gap	SAR peak location (cm)			3D distance (mm)	Summed SAR (W/kg)	SPLSR Results	Simultaneous SAR
			(cm)	X	Y	Z				
WB5	Bottom	0.982	0	0.063	0.11	-0.146	106.5	2.04	0.03	Not required
5G	Face	1.062	0	-0.043	0.1	-0.148				



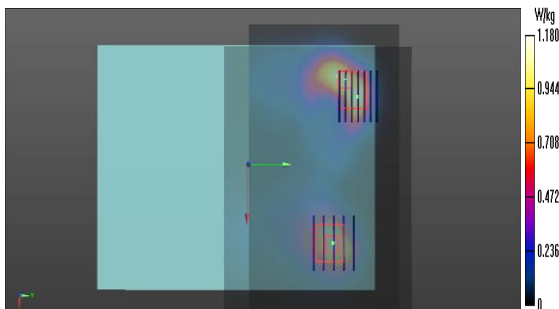
Band	Position	SAR (W/kg)	Gap	SAR peak location (cm)			3D distance (mm)	Summed SAR (W/kg)	SPLSR Results	Simultaneous SAR
			(cm)	X	Y	Z				
LTE B7	Bottom	0.963	0	0.0676	0.111	-0.145	93.6	2.07	0.03	Not required
2.4G	Face	1.106	0	-0.035	0.111	-0.146				



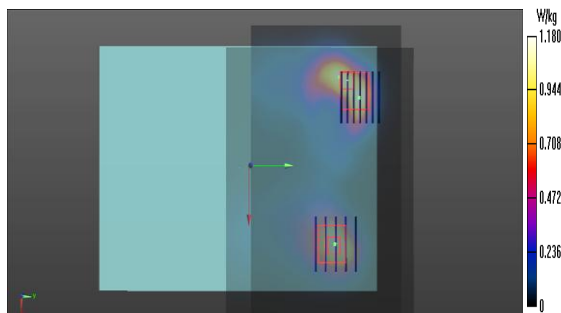
Band	Position	SAR (W/kg)	Gap	SAR peak location (cm)			3D distance (mm)	Summed SAR (W/kg)	SPLSR Results	Simultaneous SAR
			(cm)	X	Y	Z				
LTE B7	Bottom	0.963	0	0.0676	0.111	-0.145	111.2	2.03	0.03	Not required
5G	Face	1.062	0	-0.043	0.1	-0.148				



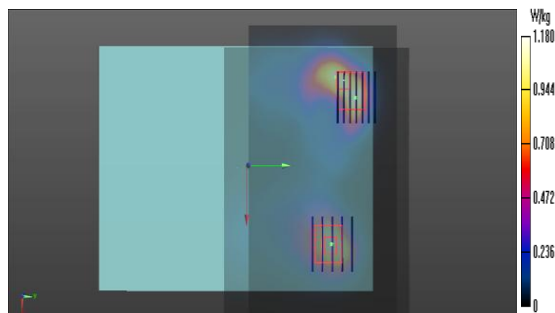
Band	Position	SAR (W/kg)	Gap	SAR peak location (cm)			3D distance (mm)	Summed SAR (W/kg)	SPLSR Results	Simultaneous SAR
			(cm)	X	Y	Z				
LTE B12/17	Bottom	1.185	0	0.0526	0.111	-0.145	78.6	2.29	0.04	Not required
2.4G	Face	1.106	0	-0.035	0.111	-0.146				



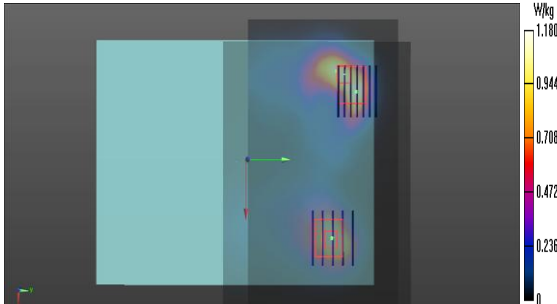
Band	Position	SAR (W/kg)	Gap	SAR peak location (cm)			3D distance (mm)	Summed SAR (W/kg)	SPLSR Results	Simultaneous SAR
			(cm)	X	Y	Z				
LTE B12/17	Bottom Face	1.185	0	0.0526	0.111	-0.145	96.3	2.25	0.03	Not required
5G		1.062	0	-0.043	0.1	-0.148				



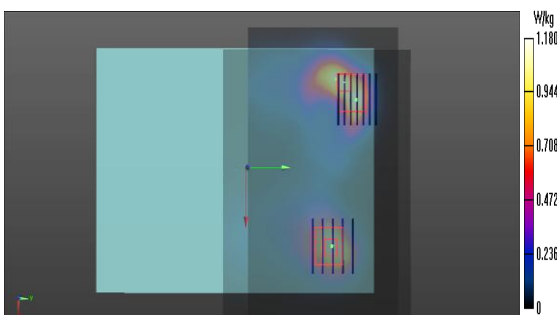
Band	Position	SAR (W/kg)	Gap	SAR peak location (cm)			3D distance (mm)	Summed SAR (W/kg)	SPLSR Results	Simultaneous SAR
			(cm)	X	Y	Z				
LTE B13	Bottom	1.199	0	0.0545	0.11	-0.145	80.5	2.31	0.04	Not required
2.4G	Face	1.106	0	-0.035	0.111	-0.146				



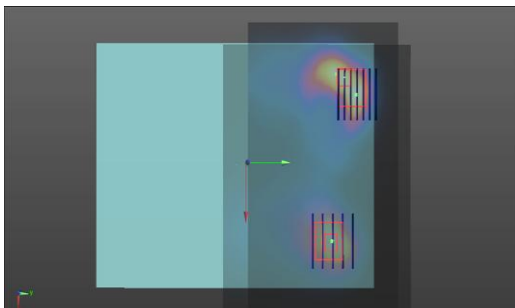
Band	Position	SAR (W/kg)	Gap	SAR peak location (cm)			3D distance (mm)	Summed SAR (W/kg)	SPLSR Results	Simultaneous SAR
			(cm)	X	Y	Z				
LTE B13	Bottom	1.199	0	0.0545	0.11	-0.145	98.1	2.26	0.03	Not required
5G	Face	1.062	0	-0.043	0.1	-0.148				



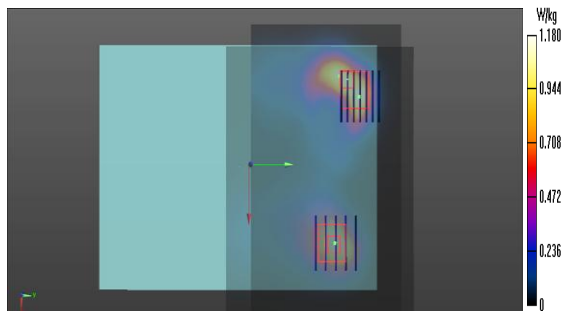
Band	Position	SAR (W/kg)	Gap	SAR peak location (cm)			3D distance (mm)	Summed SAR (W/kg)	SPLSR Results	Simultaneous SAR
			(cm)	X	Y	Z				
LTE B14	Bottom	1.025	0	0.053	0.111	-0.145	79.0	2.13	0.04	Not required
2.4G	Face	1.106	0	-0.035	0.111	-0.146				



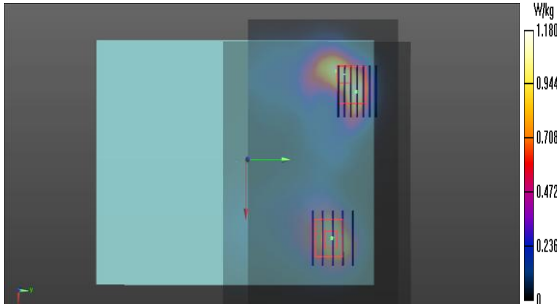
Band	Position	SAR (W/kg)	Gap	SAR peak location (cm)			3D distance (mm)	Summed SAR (W/kg)	SPLSR Results	Simultaneous SAR
			(cm)	X	Y	Z				
LTE B14	Bottom	1.025	0	0.053	0.111	-0.145	96.7	2.09	0.03	Not required
5G	Face	1.062	0	-0.043	0.1	-0.148				



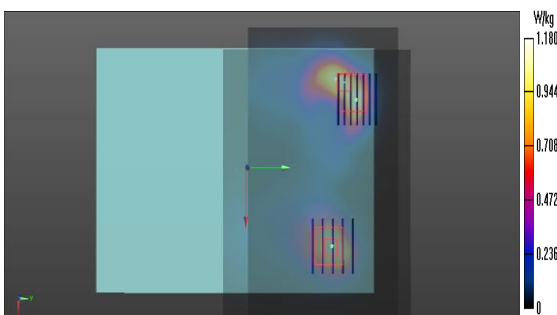
Band	Position	SAR (W/kg)	Gap	SAR peak location (cm)			3D distance (mm)	Summed SAR (W/kg)	SPLSR Results	Simultaneous SAR
			(cm)	X	Y	Z				
LTE B18	Bottom	1.149	0	0.065	0.111	-0.145	91.0	2.26	0.04	Not required
2.4G	Face	1.106	0	-0.035	0.111	-0.146				



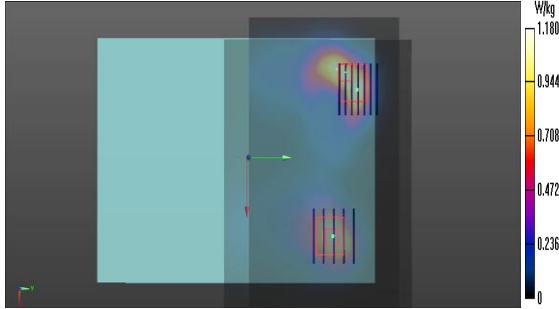
Band	Position	SAR (W/kg)	Gap	SAR peak location (cm)			3D distance (mm)	Summed SAR (W/kg)	SPLSR Results	Simultaneous SAR
			(cm)	X	Y	Z				
LTE B18	Bottom	1.149	0	0.065	0.111	-0.145	108.6	2.21	0.03	Not required
5G	Face	1.062	0	-0.043	0.1	-0.148				



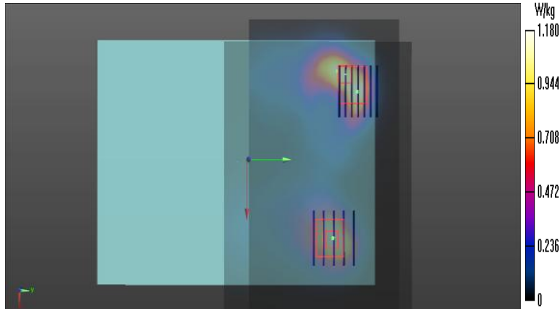
Band	Position	SAR (W/kg)	Gap	SAR peak location (cm)			3D distance (mm)	Summed SAR (W/kg)	SPLSR Results	Simultaneous SAR
			(cm)	X	Y	Z				
LTE B19	Bottom	1.1	0	0.053	0.112	-0.145	79.0	2.21	0.04	Not required
2.4G	Face	1.106	0	-0.035	0.111	-0.146				



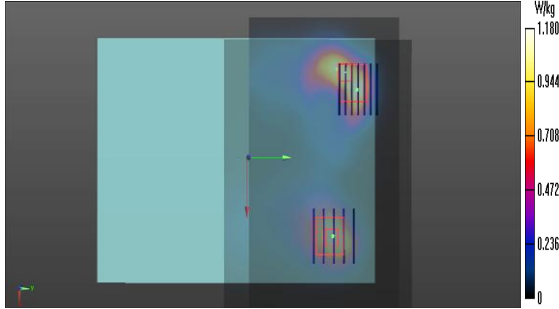
Band	Position	SAR (W/kg)	Gap	SAR peak location (cm)			3D distance (mm)	Summed SAR (W/kg)	SPLSR Results	Simultaneous SAR
			(cm)	X	Y	Z				
LTE B19	Bottom	1.1	0	0.053	0.112	-0.145	96.8	2.16	0.03	Not required
5G	Face	1.062	0	-0.043	0.1	-0.148				



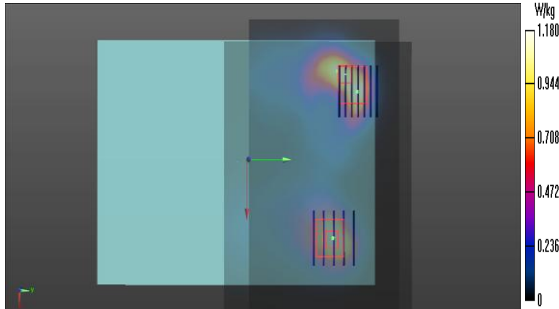
Band	Position	SAR (W/kg)	Gap	SAR peak location (cm)			3D distance (mm)	Summed SAR (W/kg)	SPLSR Results	Simultaneous SAR
			(cm)	X	Y	Z				
LTE B25/2	Bottom	1.05	0	0.062	0.107	-0.146	88.1	2.16	0.04	Not required
2.4G	Face	1.106	0	-0.035	0.111	-0.146				



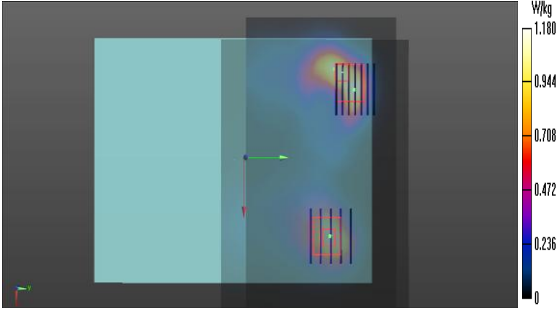
Band	Position	SAR (W/kg)	Gap	SAR peak location (cm)			3D distance (mm)	Summed SAR (W/kg)	SPLSR Results	Simultaneous SAR
			(cm)	X	Y	Z				
LTE B25/2	Bottom	1.05	0	0.062	0.107	-0.146	105.3	2.11	0.03	Not required
5G	Face	1.062	0	-0.043	0.1	-0.148				



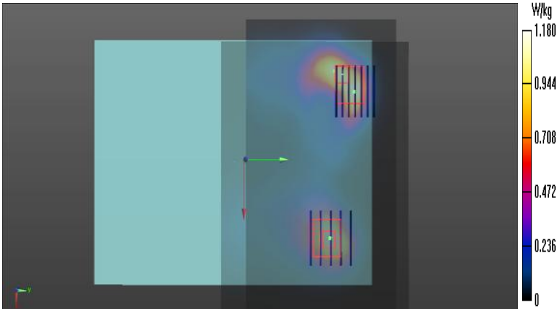
Band	Position	SAR (W/kg)	Gap	SAR peak location (cm)			3D distance (mm)	Summed SAR (W/kg)	SPLSR Results	Simultaneous SAR
			(cm)	X	Y	Z				
LTE B26/5	Bottom	1.161	0	0.041	0.112	-0.146	76.0	2.27	0.04	Not required
2.4G	Face	1.106	0	-0.035	0.111	-0.146				



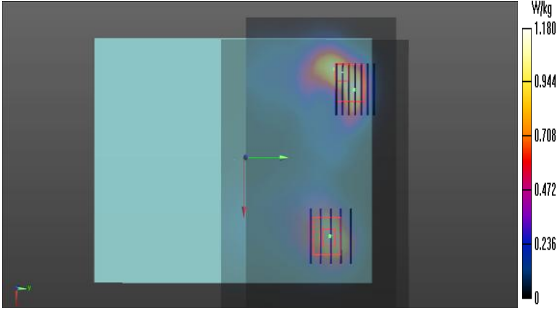
Band	Position	SAR (W/kg)	Gap	SAR peak location (cm)			3D distance (mm)	Summed SAR (W/kg)	SPLSR Results	Simultaneous SAR
			(cm)	X	Y	Z				
LTE B26/5	Bottom	1.161	0	0.041	0.112	-0.146	84.9	2.22	0.04	Not required
5G	Face	1.062	0	-0.043	0.1	-0.148				



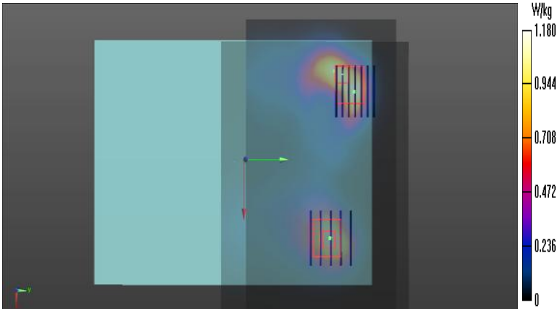
Band	Position	SAR (W/kg)	Gap	SAR peak location (cm)			3D distance (mm)	Summed SAR (W/kg)	SPLSR Results	Simultaneous SAR
			(cm)	X	Y	Z				
LTE B30	Bottom	0.858	0	0.0592	0.0946	-0.146	86.8	1.96	0.03	Not required
2.4G	Face	1.106	0	-0.035	0.111	-0.146				



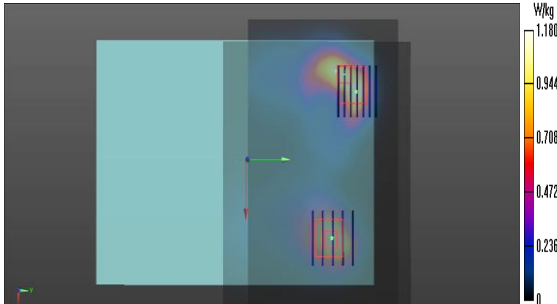
Band	Position	SAR (W/kg)	Gap	SAR peak location (cm)			3D distance (mm)	Summed SAR (W/kg)	SPLSR Results	Simultaneous SAR
			(cm)	X	Y	Z				
LTE B30	Bottom	0.858	0	0.0592	0.0946	-0.146	102.4	1.92	0.03	Not required
5G	Face	1.062	0	-0.043	0.1	-0.148				



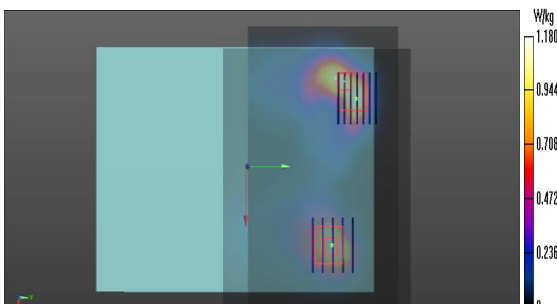
Band	Position	SAR (W/kg)	Gap	SAR peak location (cm)			3D distance (mm)	Summed SAR (W/kg)	SPLSR Results	Simultaneous SAR
			(cm)	X	Y	Z				
LTE B41	Bottom	0.962	0	0.0568	0.108	-0.145	82.9	2.07	0.04	Not required
2.4G	Face	1.106	0	-0.035	0.111	-0.146				



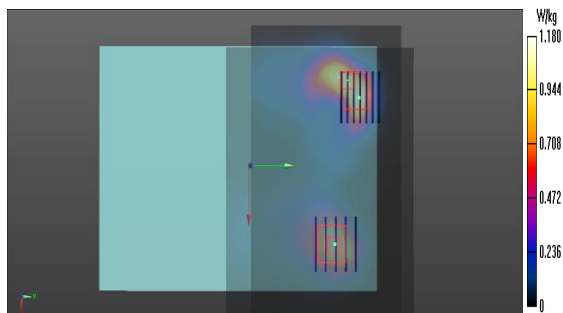
Band	Position	SAR (W/kg)	Gap	SAR peak location (cm)			3D distance (mm)	Summed SAR (W/kg)	SPLSR Results	Simultaneous SAR
			(cm)	X	Y	Z				
LTE B41	Bottom	0.962	0	0.0568	0.108	-0.145	100.2	2.02	0.03	Not required
5G	Face	1.062	0	-0.043	0.1	-0.148				



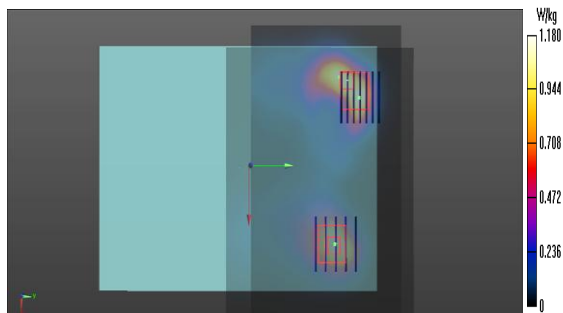
Band	Position	SAR (W/kg)	Gap	SAR peak location (cm)			3D distance (mm)	Summed SAR (W/kg)	SPLSR Results	Simultaneous SAR
			(cm)	X	Y	Z				
LTE B66/4	Bottom	1.157	0	0.0665	0.109	-0.145	92.5	2.26	0.04	Not required
2.4G	Face	1.106	0	-0.035	0.111	-0.146				



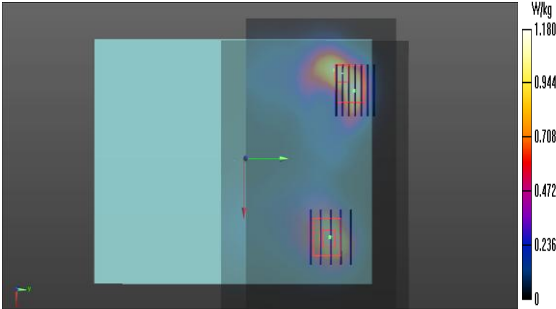
Band	Position	SAR (W/kg)	Gap	SAR peak location (cm)			3D distance (mm)	Summed SAR (W/kg)	SPLSR Results	Simultaneous SAR
			(cm)	X	Y	Z				
LTE B66/4	Bottom Face	1.157	0	0.0665	0.109	-0.145	109.9	2.22	0.03	Not required
5G		1.062	0	-0.043	0.1	-0.148				



Band	Position	SAR (W/kg)	Gap	SAR peak location (cm)			3D distance (mm)	Summed SAR (W/kg)	SPLSR Results	Simultaneous SAR
			(cm)	X	Y	Z				
LTE B71	Bottom	1.05	0	0.053	0.11	-0.146	79.0	2.16	0.04	Not required
2.4G	Face	1.106	0	-0.035	0.111	-0.146				



Band	Position	SAR (W/kg)	Gap	SAR peak location (cm)			3D distance (mm)	Summed SAR (W/kg)	SPLSR Results	Simultaneous SAR
			(cm)	X	Y	Z				
LTE B71	Bottom	1.05	0	0.053	0.11	-0.146	96.5	2.11	0.03	Not required
5G	Face	1.062	0	-0.043	0.1	-0.148				





18 Measurement Uncertainty

According to KDB 865664 D01 SAR measurement 100 MHz to 6GHz, when the highest measured 1-g SAR is less than 1.5 W/kg and 10-g extremity SAR less than 3.75 W/kg, the expanded SAR measurement uncertainty must be less than 30% with a confidence interval of $k=2$. When these conditions are met, extensive SAR measurement uncertainty analysis described in IEEE 1528-2013 is not required in the SAR report and submitted for equipment approval. For this device, both the 1-g SAR is less than 1.5 W/kg, therefore the measurement uncertainty table is not required in this report.

19 Measurement Conclusion

The SAR evaluation indicates that the EUT complies with the RF radiation exposure limits of FCC, with respect to all parameters subject to this test. These measurements were taken to simulate the RF effects of RF exposure under worst-case conditions. Precise laboratory measures were taken to assure repeatability of the tests. The results and statements relate only to the item(s) tested. Please note that the absorption and distribution of electromagnetic energy in the body are very complex phenomena that depend on the mass, shape, and size of the body, the orientation of the body with respect to the field vectors, and the electrical properties of both the body and the environment. Other variables that may play a substantial role in possible biological effects are those that characterize the environment (e.g. ambient temperature, air velocity, relative humidity, and body insulation) and those that characterize the individual (e.g. age, gender, activity level, debilitation, or disease). Because various factors may interact with one another to vary the specific biological outcome of an exposure to electromagnetic fields, any protection guide should consider maximal amplification of biological effects as a result of field-body interactions, environmental conditions, and physiological variables.



Annex A General Information

1. Identification of the Responsible Testing Laboratory

Laboratory Name:	Shenzhen Morlab Communications Technology Co., Ltd.
Laboratory Address:	FL.1-3, Building A, FeiYang Science Park, No.8 LongChang Road, Block 67, BaoAn District, ShenZhen, GuangDong Province, P. R. China
Telephone:	+86 755 36698555
Facsimile:	+86 755 36698525

2. Identification of the Responsible Testing Location

Name:	Shenzhen Morlab Communications Technology Co., Ltd.
Address:	FL.1-3, Building A, FeiYang Science Park, No.8 LongChang Road, Block 67, BaoAn District, ShenZhen, GuangDong Province, P. R. China

3. Facilities and Accreditations

The FCC designation number is CN1192, the test firm registration number is 226174.

Note:

The main report is end here and the other annex (B,C,D,E,F,G,H) will be submitted separately.

***** END OF MAIN REPORT *****