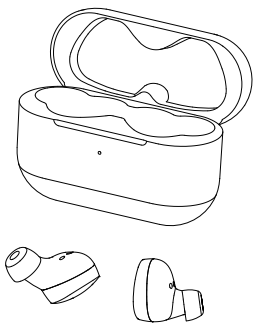


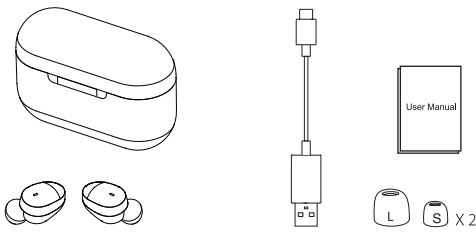
Wireless Stereo Earbuds
User Manual



Dual Call
FCC ID: 2AZJO-W2

Packing List

Bluetooth earbuds (2PCS)
A charging case
A USB-C charging cable
Silicone ear tips (2pcs for each large and small size)
User manual
Packaging box



One box contains extra small and large size silicone tips and comply tips with middle size.

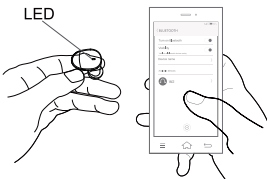
Product Specifications

Product name	Bluetooth earbuds
Bluetooth version	V 5.2 (QCC3040)
Bluetooth distance	10M
Bluetooth name	W2
Input	DC 5V
Working time	Approx 6hrs single time
Battery capacity	2*30mAh
Charging case capacity	200mAh
IPX Rating	IPX5
Bluetooth protocol	A2DP/HFP/HSP/AVRCP/SPP
Decoding format	APT-X-ADAPTIVE/APTX/AAC/SBC
Frequency response	20Hz-20KHz
Sensitive	108±3db
Impedance	16Ω
Charging case size	56.3*40.7*24.3mm
N.W	34.1g
Earbuds size	20.8*19.3*21.5mm
N.W	3.9g

Using Guide

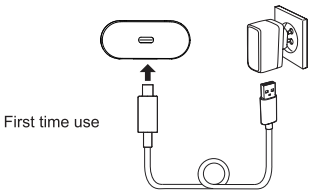
Bluetooth Connection

1. Open the charging case, the red and green light flash alternately.
2. Turn on Bluetooth on your device and select W2,click the connection to pairing.After the phone is connected, a "beep"sound prompt can be heard in about 5 seconds ,the indicator light is off.
(keep a distance of less than 20 cm between the left and right earbuds,and the earbuds can't not link another device at the same time).
3. Use it again for the same device, the earbuds will remember and automatically connect back to the previous devices.



Kindly Reminder

1. Single ear use supported
If you want to use just one buds ,either of earbuds are ok. But please make sure both earbuds should connected with your device successful after first pairing.
2. When the erabuds are working normally,put them into the charging case to charge and power off automatically.
3. For first time use after unpacking, charge the case and earphones using the USB cable at least 10 minutes. Do not take the earbuds out during this time if the earbuds are at low battery.



Operations

	Left		Right
Play/pause ()	x1	or	x1
Next song ()			x2
Previous song ()	x2		
Volume control () +			Hold & long press
Volume control () -			Hold & long press
Voice activation ()			x3
Gaming mode ()	x4	or	x4
Exit gaming mode ()	x4	or	x4
Incoming call ()	x1	or	x1
Reject call ()	x2	or	x2
End call ()	x2	or	x2
Power on/off Bluetooth pairing			Automatic
Reset	Press L and R button quickly for 5 times at the same time in the charging case, restore the factory settings.		

Power Display

Charging case	Orange light	1%-20% Low battery
	Green light	20%-99% Breathes when charging
	Green light	100% Always on when fully charged
Earbuds	Flashes red	Low battery
	Red light	Charging (Inside case)
	Green light	Fully charged (Inside case)
	Red and green light cross flashing	Pairing
	Flashes green	Phone call

- *To charge the earbuds, place them in the charging case and close the lid.
- *To charge the charging case use the provided USB cable and plug it into a USB power supply.
- *A fully charged case provides 3 extra earbuds charges when on - the - go.

Trouble Shooting

1. Make sure charging case has enough power.
2. Put the earbuds into the case and recharge for a while.
3. Take out both earbuds from charge case,waiting until the earbuds LED flashes red and green.This method only applies for right and left earbuds being not able to pair.
4. Failure to connect,check whether the earbuds are in searching status.Turn off other Bluetooth devices.
5. Small or distorted sound,test the volume of the device and adjust the volume to the suitable position.
6. The earbuds should be correctly and professionally used according to the requirements. Pay attention to the influence of the use environment on the earbuds. To ensure the smooth connection, it is recommended that the distance between the Bluetooth device and the earbuds be within 10M.

Care and Maintenance

1. Earbuds should be stored in a dry and ventilated environment to avoid contact with oil, water vapor, steam, moisture and dust, so as not to affect product performance.
2. Charge the earbuds at least once every 6 months.
3. Do not use chemicals or detergents to clean the earbuds.
4. Do not drop or knock your earbuds on hard surfaces.
5. Do not scrape the surface with sharp objects.
6. If the earbuds is not connected or the communication is not smooth, etc., please do not try to take the product apart., otherwise it will not be guaranteed.
7. Please use the standard car charger or the charger specified by the company.

This device complies with Part 15 of the FCC Rules. Operation is subject to the following two conditions: (1) this device may not cause harmful interference, and (2) this device must accept any interference received, including interference that may cause undesired operation

This device has been tested and found to comply with the limits for a Class B digital device, pursuant to Part 15 of the FCC Rules. These limits are designed to provide reasonable protection against harmful interference in a residential installation. This device generates, uses and can radiate radio frequency energy and, if not installed and used in accordance with the instructions, may cause harmful interference to radio communications.

However, there is no guarantee that interference will not occur in a particular installation. If this device does cause harmful interference to radio or television reception, which can be determined by turning the device off and on, the user is encouraged to try to correct the interference by one or more of the following measures:

- Reorient or relocate the receiving antenna.
- Increase the separation between the device and receiver.
- Connect the device into an outlet on a circuit different from that to which the receiver is connected.
- Consult the dealer or an experienced radio/TV technician for help

Changes or modifications not expressly approved by the party responsible for compliance could void the user's authority to operate the equipment