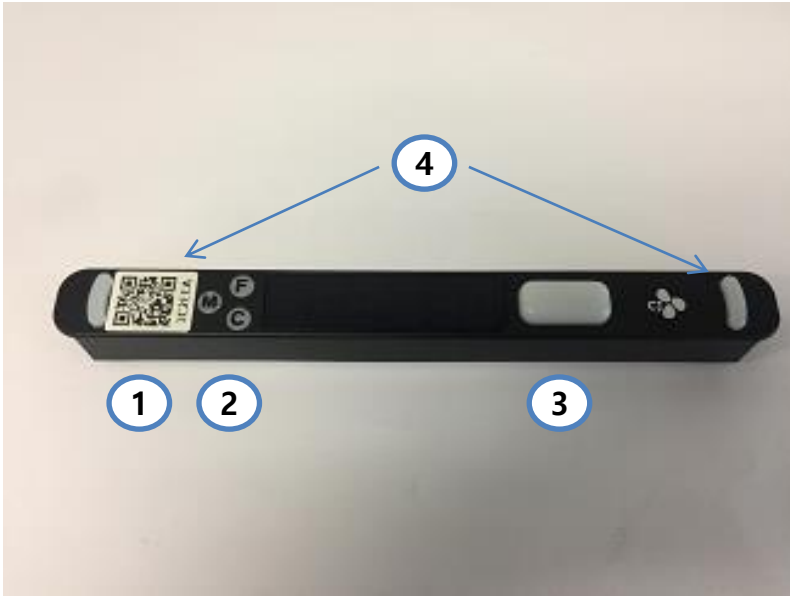


# **MPS 3.0 Indicator User manual**

- 1. Identification of each part**
- 2. Check the connection port and wiring**
- 3. Front display**
- 4. Product Introduction**
- 5. Product Overview**
- 6. Installation and Operation**
- 7. Register Indicators**
- 8. How to use**
- 9. Terminal Definition**
- 10. Power and External Connections**
- 11. Product Specification**
- 12. Block Diagram**

## 1. Identification of each part



1. Indicator Unique ID
2. Function switch (M / F / C)
3. Display LED & Main Push Button
4. Function LED

## 2. Check the connection port and wiring



5. Power cable. connection port (2pin)
6. Lighting LED Connection Port & External Switch (OPTION). Connection port (4pin)

### 3. Front display



#### Front display

1. Product number (QR code and text printed)
2. "M" / "F" / "C" button (M: Menu, F: Full, C: Cancel)
3. Blue 3-unit FND display
4. Red 3-unit FND display
5. Four colors (red, blue, green, yellow) LED display & main
6. Company logo
7. Auxiliary white LED

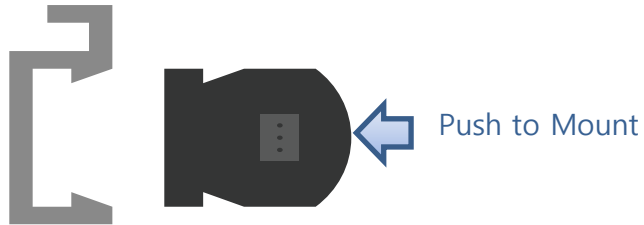
## 4. Product Introduction

- MPI 3.0 Indicator was developed based on proprietary protocol networking for IoT technology and displays work instruction information received from Ex-DPS / DAS Manager.
- Dimension: **254 X 30 X 28 [mm]** (Length x Width x Depth)
- The case is matte black, the logo and product number are white, and the information display LEDs are red and blue.
- The operation button indicates that the light is in stock in the direction of the incoming arrow
- The Done button is available in four colors (green, orange, red, blue)



3 Button		3+3 Digits	1 Button	Specification	
용도	✓ Menu, Select, Cancel ✓ Quantity control, previous / next, etc.	✓ Location ID, item number quantity, status display	✓ done, confirm	•Wireless	Sub-GHz
				•Frequency	919-923MHz ISM Band
특징				•Data Rate	~250Kbps
				•Distance	~10m Power,
				•Interface	1 Output(LED),
		✓ Improved utilization and intuitive perception by applying different colors and intervals	✓ Apply 4colors (R / G / B / Y) LED ✓ Non-contact structure (inside) for improved durability		

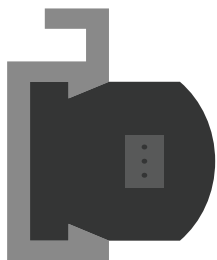
## 5. Installation and Operation



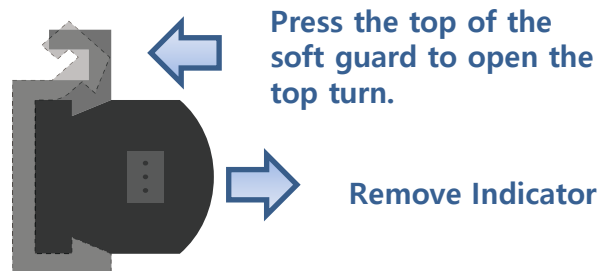
<When installed>

- Push the Indicator from the front.
- Insert the power cable into the bulkhead of the upper part of the guard.

### b-1. Installation Tip



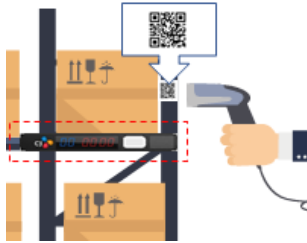
<Mounting condition>



<Upon removal>

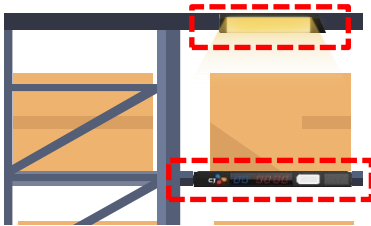
## 6. Register Indicators

- Indicator registration using QR code



Each cell is assigned a unique QR code, and when it is scanned by the scanner, the unique QR code of the indicator to be newly registered is rescanned and automatically registered to the server.

- Equipped with separate LED lights



Attach it to each cell to use LED lights that work with the indicator to increase visibility of the operator to prevent job errors.  
- Connect the optional LED bar for 5V to the 4pin connector.

## 7. How to use

### 1) Product code recognition by item

Scan the bar code of the product you want to input.

### 2) Distribution of required quantity for each destination

It will identify the final quantity required to be shipped by dealers and display the goods code and quantity required in each indicator through the Gateway.

At this point, the LED on the confirmation button indicates that it must be received.

### 3) Check after loading goods

Insert the quantity marked on the indicator for each delivery box and press the confirm button.

When the confirm button is pressed, the status of the indicator changes to LED ON -> LED OFF.

When all confirm buttons are pressed, the next item is scanned.

Green LED's mean that items must be loaded in green box, red LED's in red box, yellow LED's in yellow box, and blue LED's in blue box.

### 4) When all goods have been loaded, the invoice is printed.

## 8. Connector Definition

1. Power Connector    2. Auxiliary 4-pin connector



- 1: GND  
2: VCC (12V)



- 1: EXT\_LED(5V)  
2: GND  
3: SW\_EXT  
4: SW\_EXT\_Return

## 3. F/W Upgrade connector



- 1: VMCU\_IN  
2: SWCLK  
3: SWDIO  
4: GND

## 10. Power and External Connections

- The MPI 3.0 Indicator has the following ranges of supply power and voltage ranges.
  - Input voltage range: DC6V ~ DC12V
  - Maximum power consumption: <15W
- The MPI 3.0 Indicator supports the following external interfaces:
  - Secondary Switch
  - LED bar for auxiliary lighting (DC 5V only)



This device complies with Part 15 of the FCC Rules. Operation is subject to the following two conditions:

1. This device may not cause harmful interference.
2. This device must accept any interference received, including interference that may cause undesired operation.

Note: This equipment has been tested and found to comply with the limits for a Class A digital device, pursuant to Part 15 of the FCC Rules. These limits are designed to provide reasonable protection against harmful interference when the equipment is operated in a commercial environment. This equipment generates, uses, and can radiate radio frequency energy, and if it is not installed and used in accordance with the instruction manual, it may cause harmful interference to radio communications. Operation of this equipment in a residential area is likely to cause harmful interference, in which case the user will be required to correct the interference at his own expense.

Modifications: Any modifications made to this device that are not approved by CJ Logistics Corporation may void the authority granted to the user by the FCC to operate this equipment.

Indicator & Gateway has been used to facilitate the delivery of various instructions for the work performed in the logistics distribution to the field workers. This device is Class A than Class B since it is using for Industrial not for household.