

## 控制器产品规格书

### Controller product specification

Product Name: Remote Parameter

Shanghai Edge Light Industry Co.,LTD.

TEL:+86-21-64412288

FAX:+86-21-64412266

E-mail: [info@edgelight.com](mailto:info@edgelight.com)

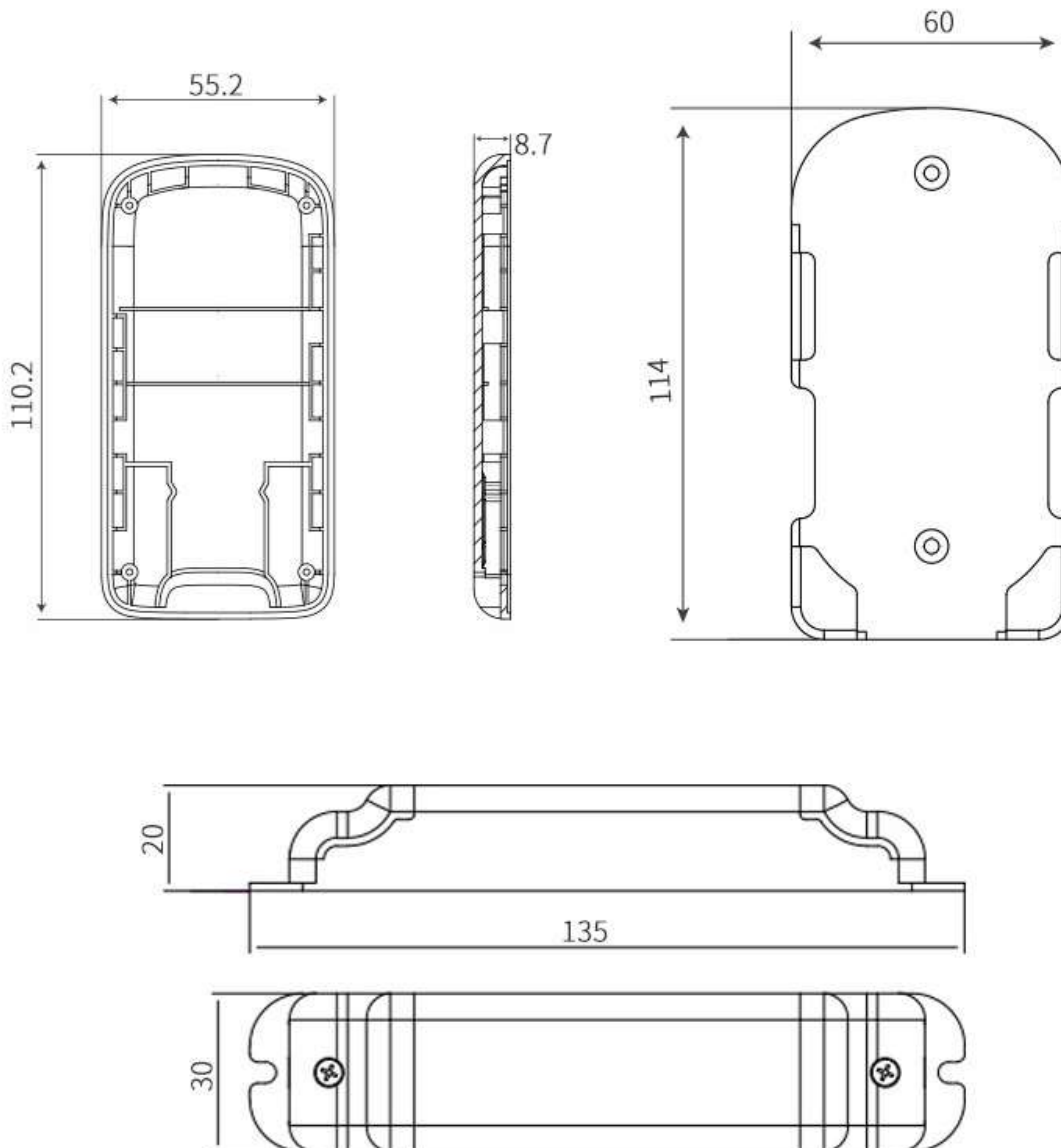
## 1、产品简介 Product Introductions



Y 系列 LED 控制器可体验到调光、调色温、RGB、RGBW 控制，满足客户不同的需求；通过 RF 遥控器可以进行速度/亮度调节，自定义任意色，静态颜色选择以及各种动态灯光变化效果。

Y series LED controller includes functions of dimming, color temperature adjusting, RGB and RGBW control, meeting different needs of customers; with the RF remote control, you can adjust speed/brightness, favorite colors, single color effect or multiple color dynamic effects.

## 2、机械尺寸(mm) Dimensions



## 3、Y1 的操作说明 Y1 Operation Instructions

遥控器驱动器配对:

只有使驱动器进入配对模式时才能和遥控器配对或者取消配对。

Match the remoter to the driver:

The driver needs to be connected with the remote when being operated by users.

驱动器有两种方式进入配对模式：

1、长按驱动器上的功能按键 3s 以上。当驱动器上的 LED 状态灯常亮时表示驱动器已经进入了配对模式。需要注意的是，该操作会删除之前这台设备上所有已经配对的遥控器信息，如果 20s 内未完成配对设备会自动退出配对模式。

2、驱动器通电后的 5s 内设备自动处于配对模式，此时驱动器上的 LED 状态灯常亮。5s 后设备自动退出配对模式。

注意：驱动器的状态参数保存会有 5s 的延时。

Two Methods of Matching:

1. Press the function button on the drive more than 3 seconds. It indicates that the driver is in matching mode when the LED status light on the driver works constantly. It should be noted that matching operation will delete all previously paired remote control information on this device. If the driver cannot receive the matching signal within 20s, it will automatically exit the matching mode.

2. The device is automatically in matching mode within 5 seconds after turning on, and the LED status light on the driver is working. The device automatically exits matching mode after 5 seconds if no remote signal receiving.

Note: Parameter preserving of the driver needs 5 seconds.

配对操作：

当驱动器在配对模式时，单击遥控器上的任意按键或滑环。

Matching Operation ON:

Click any button or slip the color ring on the remote control.

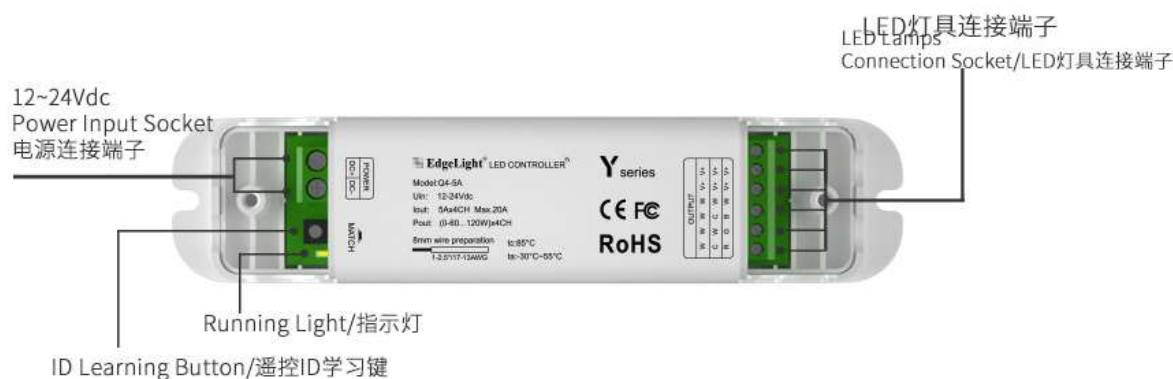
取消配对操作:

- 1、当驱动器在配对模式时，长按遥控器开关按键。
- 2、长按驱动器上的功能按键 3s 以上。

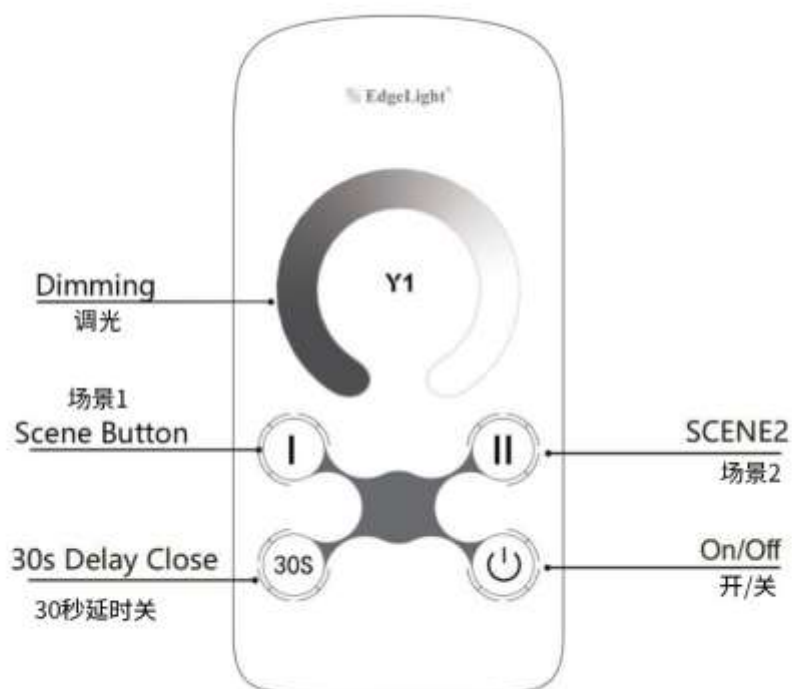
Matching Operation OFF:

1. Press the remote control switch button until it is shut down.
2. Press the function button on the driver for 3 seconds.

#### 4、接收控制器部件说明: Controller Component Description



#### 5、遥控器操说明: Remote Operation



### Scene I 键: Scene Button

长按 3 秒保存当前场景。

短按，调出已保存场景 I。

Press 3 seconds to save the current modes.

Quick press to restart the last saved modes.

### Scene II 键: Scene Button

长按 3 秒保存当前场景。

短按，调出已保存场景 II。

Press 3 seconds to save the current modes.

Quick press to restart the last saved modes.

30 秒延时关灯键 30s Delay close

按下后 30 秒关灯。

## 7、技术参数： Technical Parameters

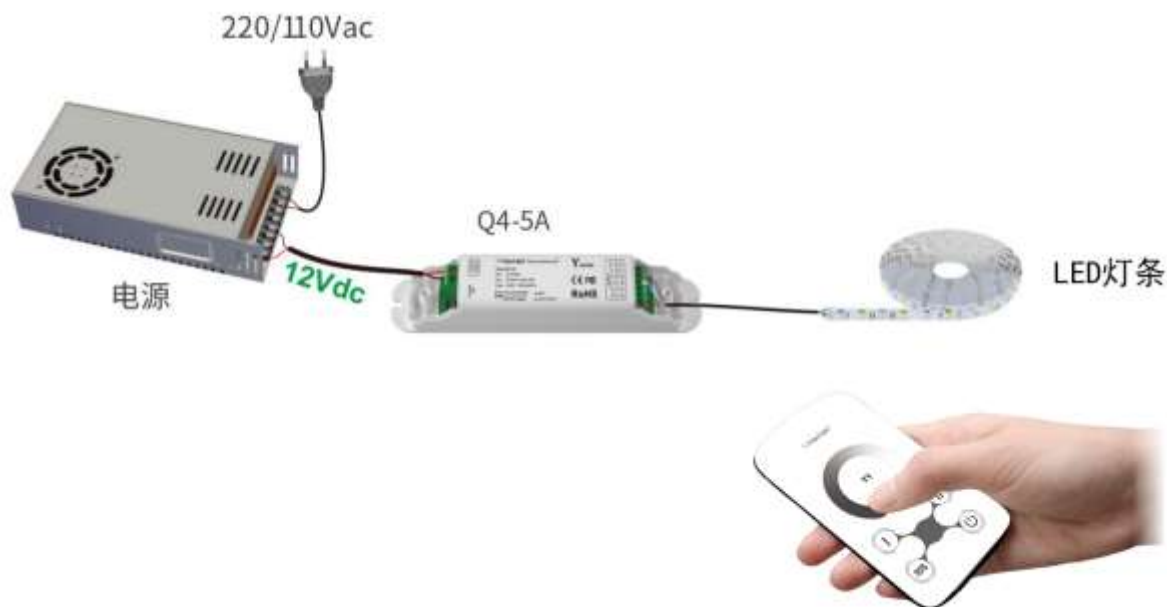
<b>DIM 遥控器： DIM Remote</b>	
型号 Item	Y1(DIM)
工作电压 Voltage	3Vdc(battery CR2032)
工作频率 Frequency	2.4G
遥控距离 Operating Distance	40m
工作温度 Operating Temperature	-30°C~55°C
重量 Weight	40g
<b>RGBW 恒压接收器： RGBW Constant Voltage Driver</b>	
型号 Item	CL 4X2.5A -2.4G
输入电压 Input Voltage	12~24Vdc
最大负载电流 Maximum Load Current	5Ax4 路/最大 11A 5Ax4 channel/Max. 11A
最大负载功率 Maximum Load Power	(0~30W...60W)x4 路/最大 240W (0~30W...60W)x4 channel/Max. 240W
保护 Protection	短路/过流保护 Short Circuit/Over Current
工作温度 Operating Temperature	-30°C~55°C
重量 Weight	42g



## 8、连接示意图: Connection Diagram

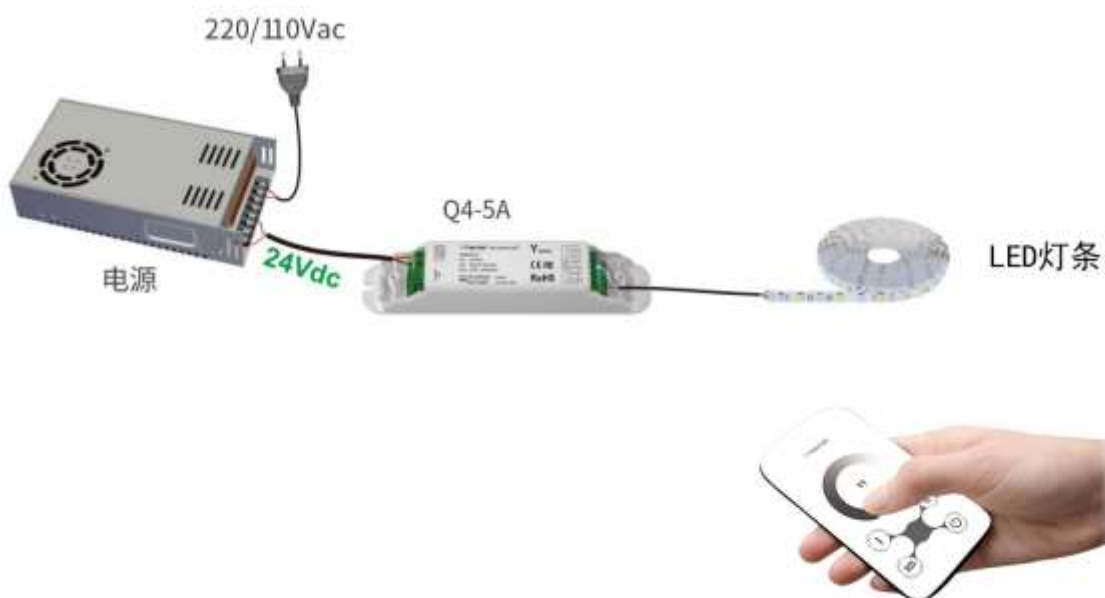
例 1: 连接 12V 灯具, 可负载 0~120W(5AX4CHX12V).

Connect to 12V LED Strip, the devices can load 0~120W(5AX4CHX12V).



例 2: 连接 24V 灯具, 可负载 0~240W(5AX4CHX24V).

Connect to 24V LED Strip, the devices can load 0~240W(5AX4CHX24V).





#### **FCC Caution.**

This device complies with part 15 of the FCC Rules. Operation is subject to the following two conditions:

- (1) This device may not cause harmful interference, and
- (2) This device must accept any interference received, including interference that may cause undesired operation.

Any Changes or modifications not expressly approved by the party responsible for compliance could void the user's authority to operate the equipment.

Note: This equipment has been tested and found to comply with the limits for a Class B digital device, pursuant to part 15 of the FCC Rules. These limits are designed to provide reasonable protection against harmful interference in a residential installation. This equipment generates uses and can radiate radio frequency energy and, if not installed and used in accordance with the instructions, may cause harmful interference to radio communications. However, there is no guarantee that interference will not occur in a particular installation. If this equipment does cause harmful interference to radio or television reception, which can be determined by turning the equipment off and on, the user is encouraged to try to correct the interference by one or more of the following measures:

- Reorient or relocate the receiving antenna.
- Increase the separation between the equipment and receiver.
- Connect the equipment into an outlet on a circuit different from that to which the receiver is connected.
- Consult the dealer or an experienced radio/TV technician for help.

The device has been evaluated to meet general RF exposure requirement. The device can be used in portable exposure condition without restriction.