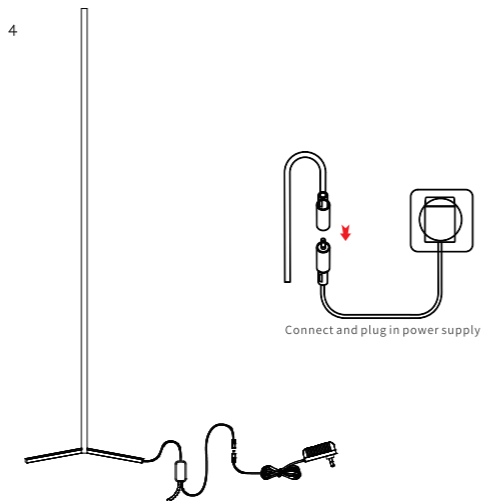


USER MANUAL

WI-FI SMART LED CORNER LIGHT USER MANUAL



Installation Steps



Features

RGB

This RGB LED strip lights kit has not only RGB(Red,Green,Blue),32 multicolored options,but also DIY selection to create your great led mood lighting.

MUSIC Reactive

Music synchronized LED strip lights shows in real-time.

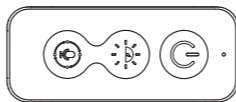
Remote APP Control

Remotely control strip lights via the APP.Put strip lights changing at your fingertips.

Voice Activated

Works with Alexa and Google Assistant.Control strip lights by simple voice commands.

Controlling By Control Box

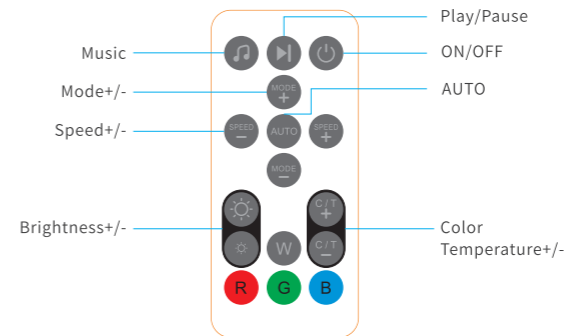


Power On/Off button:Short press to turn on/off the strip lights, long press 5 seconds,the LED controller will start Wi-Fi config

Light Bright/speed adjustment: Short press to switch speed circularly, long press to switch bright circularly.

Music Music/Mode/Scene adjustment: Short press to switch the scene circularly; double press to switch the mode between the static / pre-set / custom / music circularly; long press to enter in/exit out music mode.

Controlling By Remote



ON/OFF	Click to turn the strip lights on/off.
Music	Click to enter music mode.
Play/Pause	Click to play or pause.
AUTO	Click to enter automatic scene mode.
SPEED+/-	Adjust the performing speed in scene mode.
MODE+/-	Adjust the scene mode.
Brightness+/-	Click to adjust the brightness of strip lights.
Color Temperature+/-	Click to change 32 preset colors circularly in color mode or change 12 preset temperature in white mode circularly.
RGBW	Click to switch to corresponding color.R for red, G for green,B for blue,W for white.

Setting the APP

Step 1:

Scan the QR Code or search "Smart Life" or "Tuya Smart" on App store or Google Play to download and install the APP for iOS / Android.
The mobile phone system version needs to be Android 5.0 and iOS 9.0 or above.



Step 2:

Run "Smart Life" or "Tuya Smart" app on your phone, then tap "sign up" to create an account with Email address (if you already had one, please log in), and verify your account with verification code which has sent to your email.

Step 3:

Log in your account and follow the App instructions to create a "Family" and later follow below instructions to add devices to your "Family".

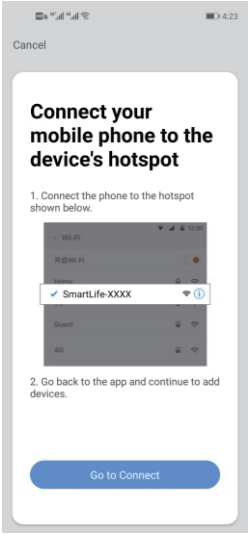
Quick Mode Configuration(EZ mode)

- Before connecting, please make sure your smart phone is connecting with your home Wi-Fi (2.4GHz) successfully.
- To connect in EZ mode, the strip lights needs to be set to blinks rapidly. (You can learn the detailed instruction on "How to set light as rapidly flashing" section).

- 3.Open APP and click “+” to add device.
- 4.Follow the in-APP instructions to connect the strip lights to your Wi-Fi network, Please note the device only works at 2.4GHz Wi-Fi.
- 5.Once connected, the APP will prompt the connection. Then click “Completed”.
- 6.Now you can control the Strip lights through the APP.

AP (Access Point) Mode Configuration

- 1.Before connecting, please make sure your smart phone is connecting with your home Wi-Fi (2.4GHz) successfully.
- 2.To connect in AP mode, the strip lights needs to be set to blinks Slowly. (You can learn the detailed instruction on “How to set light as slowly flashing” section)

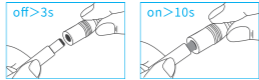


- 3.Click the ICON “+” at the top right corner of the APP.
- 4.Select device type and click AP mode to add device.
- 5.Go to Wi-Fi setting in your smart phone and select the “Smart Life-XXX” for your Wi-Fi.
- 6.Once connected successfully, the APP will prompt the connection, and click “Completed”

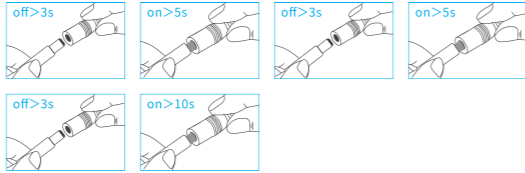
How to set light as rapidly flashing (EZ Mode)

Method 1

Step 1 Power on device



Step 2 Turn off-on-off-on-off-on

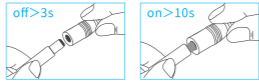


Step 3 Confirm LED Strip is now rapidly flashing



Method 2

Step 1 Power on device



Step 2 Hold the power button for 5S



Step 3 Confirm LED Strip is now rapidly flashing



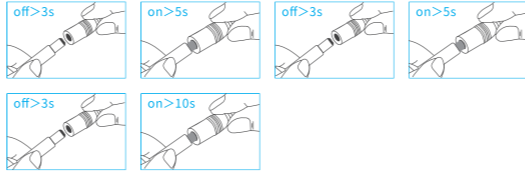
How to set light as slowly flashing (AP Mode)

Method 1

Step 1 Power on device



Step 2 Turn off-on-off-on-off-on



Step 3 Confirm LED Strip is now rapidly flashing



Step 4 Operate again: Turn off-on-off-on-off-on until light is slowly flashing

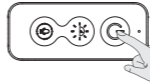


Method 2

Step 1 Power on device



Step 2 Hold the power button for 5S



Step 3 Confirm LED Strip is now rapidly flashing



Step 4 Operate again: Hold the power button for 5S until light is slowly flashing



How to connect strip lights to Amazon Alexa / Google Assistant

You can learn the detailed instruction on “Me->More Services” page of the APP. Tap the corresponding service to learn more and how to set up.

FCC STATEMENT :
This device complies with Part 15 of the FCC Rules. Operation is subject to the following two conditions:
(1) This device may not cause harmful interference, and
(2) This device must accept any interference received, including interference that may cause undesired operation.
Warning: Changes or modifications not expressly approved by the party responsible for compliance could void the user's authority to operate the equipment.
NOTE: This equipment has been tested and found to comply with the limits for a Class B digital device, pursuant to Part 15 of the FCC Rules. These limits are designed to provide reasonable protection against harmful interference in a residential installation. This equipment generates uses and can radiate radio frequency energy and, if not installed and used in accordance with the instructions, may cause harmful interference to radio communications. However, there is no guarantee that interference will not occur in a particular installation. If this equipment does cause harmful interference to radio or television reception, which can be determined by turning the equipment off and on, the user is encouraged to try to correct the interference by one or more of the following measures:
Reorient or relocate the receiving antenna.
Increase the separation between the equipment and receiver
Connect the equipment into an outlet on a circuit different from that to which the receiver is connected.
Consult the dealer or an experienced radio/TV technician for help.
FCC Radiation Exposure Statement:
This equipment complies with FCC radiation exposure limits set forth for an uncontrolled environment. This equipment should be installed and operated with minimum distance 20cm between the radiator & your body