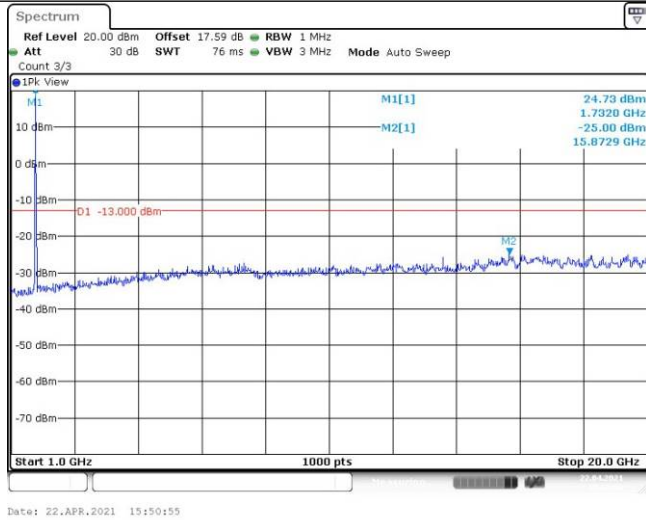
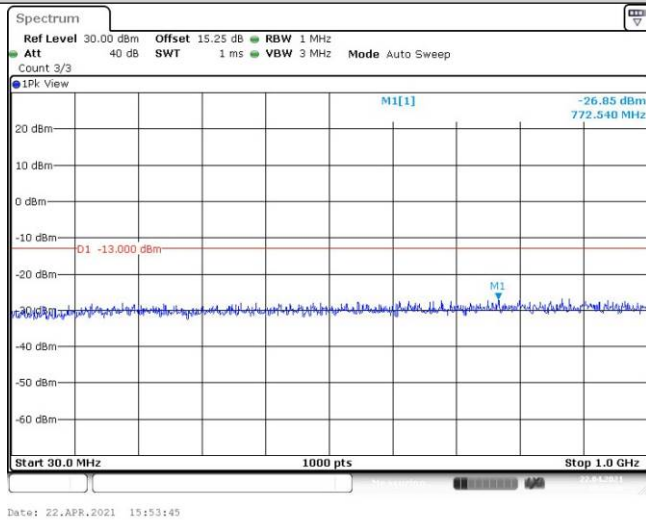


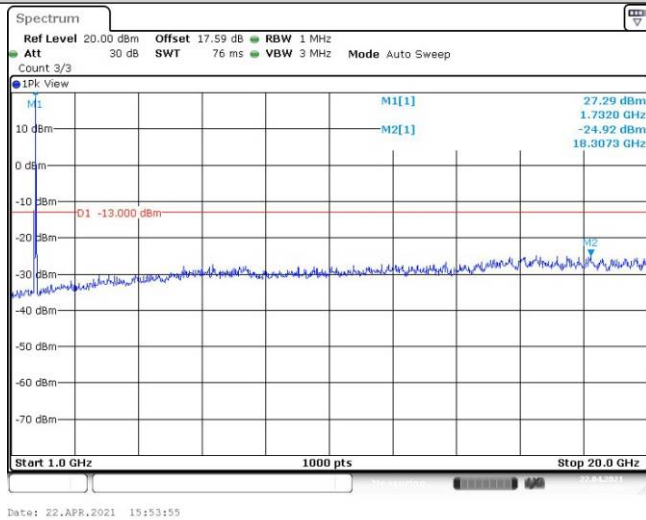
Band4-20MHz-16QAM-20175-1RB#0-Range2:1000~2000MHz



Band4-20MHz-16QAM-20300-1RB#0-Range1:30~1000MHz



Band4-20MHz-16QAM-20300-1RB#0-Range2:1000~2000MHz



Appendix F: Frequency Stability

Test Result

Band	Bandwidth	Modulation	Channel	RB Configure	Voltage			Deviation (Hz)	Deviation (ppm)	Limit (ppm)	Verdict
					Voltage [Vdc]	Temperature (°C)					
Band4	1.4MHz	QPSK	19957	6RB#0	VL	NT	-15.95	-0.009324	±2.5	PASS	
Band4	1.4MHz	QPSK	19957	6RB#0	VN	NT	-22.54	-0.013176	±2.5	PASS	
Band4	1.4MHz	QPSK	19957	6RB#0	VH	NT	-16.59	-0.009698	±2.5	PASS	
Band4	1.4MHz	QPSK	20175	6RB#0	VL	NT	-13.82	-0.007977	±2.5	PASS	
Band4	1.4MHz	QPSK	20175	6RB#0	VN	NT	-7.48	-0.004317	±2.5	PASS	
Band4	1.4MHz	QPSK	20175	6RB#0	VH	NT	-12.49	-0.007209	±2.5	PASS	
Band4	1.4MHz	QPSK	20393	6RB#0	VL	NT	-24.33	-0.013869	±2.5	PASS	
Band4	1.4MHz	QPSK	20393	6RB#0	VN	NT	-21.51	-0.012261	±2.5	PASS	
Band4	1.4MHz	QPSK	20393	6RB#0	VH	NT	-20.73	-0.011817	±2.5	PASS	
Band4	1.4MHz	16QAM	19957	6RB#0	VL	NT	16.16	0.009446	±2.5	PASS	
Band4	1.4MHz	16QAM	19957	6RB#0	VN	NT	8.10	0.004735	±2.5	PASS	
Band4	1.4MHz	16QAM	19957	6RB#0	VH	NT	14.29	0.008353	±2.5	PASS	
Band4	1.4MHz	16QAM	20175	6RB#0	VL	NT	5.05	0.002915	±2.5	PASS	
Band4	1.4MHz	16QAM	20175	6RB#0	VN	NT	2.96	0.001709	±2.5	PASS	
Band4	1.4MHz	16QAM	20175	6RB#0	VH	NT	4.62	0.002667	±2.5	PASS	
Band4	1.4MHz	16QAM	20393	6RB#0	VL	NT	-10.27	-0.005854	±2.5	PASS	
Band4	1.4MHz	16QAM	20393	6RB#0	VN	NT	-11.90	-0.006783	±2.5	PASS	
Band4	1.4MHz	16QAM	20393	6RB#0	VH	NT	-10.41	-0.005934	±2.5	PASS	
Band4	3MHz	QPSK	19965	15RB#0	VL	NT	-14.15	-0.008268	±2.5	PASS	
Band4	3MHz	QPSK	19965	15RB#0	VN	NT	-16.12	-0.009419	±2.5	PASS	
Band4	3MHz	QPSK	19965	15RB#0	VH	NT	-11.03	-0.006445	±2.5	PASS	
Band4	3MHz	QPSK	20175	15RB#0	VL	NT	-25.56	-0.014753	±2.5	PASS	
Band4	3MHz	QPSK	20175	15RB#0	VN	NT	-21.49	-0.012404	±2.5	PASS	
Band4	3MHz	QPSK	20175	15RB#0	VH	NT	-31.90	-0.018413	±2.5	PASS	
Band4	3MHz	QPSK	20385	15RB#0	VL	NT	-24.35	-0.013887	±2.5	PASS	
Band4	3MHz	QPSK	20385	15RB#0	VN	NT	-23.19	-0.013225	±2.5	PASS	
Band4	3MHz	QPSK	20385	15RB#0	VH	NT	-25.01	-0.014263	±2.5	PASS	
Band4	3MHz	16QAM	19965	15RB#0	VL	NT	17.65	0.010313	±2.5	PASS	
Band4	3MHz	16QAM	19965	15RB#0	VN	NT	15.72	0.009185	±2.5	PASS	
Band4	3MHz	16QAM	19965	15RB#0	VH	NT	24.25	0.014169	±2.5	PASS	
Band4	3MHz	16QAM	20175	15RB#0	VL	NT	-24.58	-0.014188	±2.5	PASS	
Band4	3MHz	16QAM	20175	15RB#0	VN	NT	-28.82	-0.016635	±2.5	PASS	
Band4	3MHz	16QAM	20175	15RB#0	VH	NT	-25.13	-0.014505	±2.5	PASS	
Band4	3MHz	16QAM	20385	15RB#0	VL	NT	-6.72	-0.003832	±2.5	PASS	
Band4	3MHz	16QAM	20385	15RB#0	VN	NT	-9.97	-0.005686	±2.5	PASS	
Band4	3MHz	16QAM	20385	15RB#0	VH	NT	-9.78	-0.005577	±2.5	PASS	
Band4	5MHz	QPSK	19975	25RB#0	VL	NT	22.13	0.012923	±2.5	PASS	
Band4	5MHz	QPSK	19975	25RB#0	VN	NT	19.35	0.011299	±2.5	PASS	
Band4	5MHz	QPSK	19975	25RB#0	VH	NT	26.34	0.015381	±2.5	PASS	
Band4	5MHz	QPSK	20175	25RB#0	VL	NT	-39.48	-0.022788	±2.5	PASS	
Band4	5MHz	QPSK	20175	25RB#0	VN	NT	-31.59	-0.018234	±2.5	PASS	
Band4	5MHz	QPSK	20175	25RB#0	VH	NT	14.18	0.008185	±2.5	PASS	
Band4	5MHz	QPSK	20375	25RB#0	VL	NT	-22.13	-0.012628	±2.5	PASS	
Band4	5MHz	QPSK	20375	25RB#0	VN	NT	-19.44	-0.011093	±2.5	PASS	

Band4	5MHz	QPSK	20375	25RB#0	VH	NT	-20.50	-0.011698	±2.5	PASS
Band4	5MHz	16QAM	19975	25RB#0	VL	NT	-10.01	-0.005845	±2.5	PASS
Band4	5MHz	16QAM	19975	25RB#0	VN	NT	-11.22	-0.006552	±2.5	PASS
Band4	5MHz	16QAM	19975	25RB#0	VH	NT	-10.10	-0.005898	±2.5	PASS
Band4	5MHz	16QAM	20175	25RB#0	VL	NT	-33.09	-0.019100	±2.5	PASS
Band4	5MHz	16QAM	20175	25RB#0	VN	NT	-32.36	-0.018678	±2.5	PASS
Band4	5MHz	16QAM	20175	25RB#0	VH	NT	-40.74	-0.023515	±2.5	PASS
Band4	5MHz	16QAM	20375	25RB#0	VL	NT	-8.45	-0.004822	±2.5	PASS
Band4	5MHz	16QAM	20375	25RB#0	VN	NT	-9.26	-0.005284	±2.5	PASS
Band4	5MHz	16QAM	20375	25RB#0	VH	NT	-10.99	-0.006271	±2.5	PASS
Band4	10MHz	QPSK	20000	50RB#0	VL	NT	8.51	0.004962	±2.5	PASS
Band4	10MHz	QPSK	20000	50RB#0	VN	NT	10.49	0.006117	±2.5	PASS
Band4	10MHz	QPSK	20000	50RB#0	VH	NT	6.68	0.003895	±2.5	PASS
Band4	10MHz	QPSK	20175	50RB#0	VL	NT	-16.47	-0.009506	±2.5	PASS
Band4	10MHz	QPSK	20175	50RB#0	VN	NT	-10.84	-0.006257	±2.5	PASS
Band4	10MHz	QPSK	20175	50RB#0	VH	NT	-18.38	-0.010609	±2.5	PASS
Band4	10MHz	QPSK	20350	50RB#0	VL	NT	19.28	0.011017	±2.5	PASS
Band4	10MHz	QPSK	20350	50RB#0	VN	NT	19.67	0.011240	±2.5	PASS
Band4	10MHz	QPSK	20350	50RB#0	VH	NT	25.59	0.014623	±2.5	PASS
Band4	10MHz	16QAM	20000	50RB#0	VL	NT	13.96	0.008140	±2.5	PASS
Band4	10MHz	16QAM	20000	50RB#0	VN	NT	13.95	0.008134	±2.5	PASS
Band4	10MHz	16QAM	20000	50RB#0	VH	NT	18.04	0.010519	±2.5	PASS
Band4	10MHz	16QAM	20175	50RB#0	VL	NT	-15.72	-0.009074	±2.5	PASS
Band4	10MHz	16QAM	20175	50RB#0	VN	NT	-12.85	-0.007417	±2.5	PASS
Band4	10MHz	16QAM	20175	50RB#0	VH	NT	-18.61	-0.010742	±2.5	PASS
Band4	10MHz	16QAM	20350	50RB#0	VL	NT	34.16	0.019520	±2.5	PASS
Band4	10MHz	16QAM	20350	50RB#0	VN	NT	31.43	0.017960	±2.5	PASS
Band4	10MHz	16QAM	20350	50RB#0	VH	NT	31.80	0.018171	±2.5	PASS
Band4	15MHz	QPSK	20025	75RB#0	VL	NT	-9.57	-0.005572	±2.5	PASS
Band4	15MHz	QPSK	20025	75RB#0	VN	NT	-9.00	-0.005240	±2.5	PASS
Band4	15MHz	QPSK	20025	75RB#0	VH	NT	-12.65	-0.007365	±2.5	PASS
Band4	15MHz	QPSK	20175	75RB#0	VL	NT	-7.02	-0.004052	±2.5	PASS
Band4	15MHz	QPSK	20175	75RB#0	VN	NT	12.70	0.007330	±2.5	PASS
Band4	15MHz	QPSK	20175	75RB#0	VH	NT	-7.08	-0.004087	±2.5	PASS
Band4	15MHz	QPSK	20325	75RB#0	VL	NT	-23.05	-0.013190	±2.5	PASS
Band4	15MHz	QPSK	20325	75RB#0	VN	NT	-22.67	-0.012973	±2.5	PASS
Band4	15MHz	QPSK	20325	75RB#0	VH	NT	-21.39	-0.012240	±2.5	PASS
Band4	15MHz	16QAM	20025	75RB#0	VL	NT	-27.89	-0.016239	±2.5	PASS
Band4	15MHz	16QAM	20025	75RB#0	VN	NT	-27.45	-0.015983	±2.5	PASS
Band4	15MHz	16QAM	20025	75RB#0	VH	NT	-23.25	-0.013537	±2.5	PASS
Band4	15MHz	16QAM	20175	75RB#0	VL	NT	-4.76	-0.002747	±2.5	PASS
Band4	15MHz	16QAM	20175	75RB#0	VN	NT	4.09	0.002361	±2.5	PASS
Band4	15MHz	16QAM	20175	75RB#0	VH	NT	-7.47	-0.004312	±2.5	PASS
Band4	15MHz	16QAM	20325	75RB#0	VL	NT	6.72	0.003845	±2.5	PASS
Band4	15MHz	16QAM	20325	75RB#0	VN	NT	-6.39	-0.003657	±2.5	PASS
Band4	15MHz	16QAM	20325	75RB#0	VH	NT	9.40	0.005379	±2.5	PASS
Band4	20MHz	QPSK	20050	100RB#0	VL	NT	-6.54	-0.003802	±2.5	PASS
Band4	20MHz	QPSK	20050	100RB#0	VN	NT	-2.68	-0.001558	±2.5	PASS
Band4	20MHz	QPSK	20050	100RB#0	VH	NT	-8.11	-0.004715	±2.5	PASS
Band4	20MHz	QPSK	20175	100RB#0	VL	NT	6.69	0.003861	±2.5	PASS

Band4	20MHz	QPSK	20175	100RB#0	VN	NT	11.34	0.006545	±2.5	PASS
Band4	20MHz	QPSK	20175	100RB#0	VH	NT	-8.71	-0.005027	±2.5	PASS
Band4	20MHz	QPSK	20300	100RB#0	VL	NT	29.58	0.016951	±2.5	PASS
Band4	20MHz	QPSK	20300	100RB#0	VN	NT	30.98	0.017754	±2.5	PASS
Band4	20MHz	QPSK	20300	100RB#0	VH	NT	33.77	0.019352	±2.5	PASS
Band4	20MHz	16QAM	20050	100RB#0	VL	NT	-23.73	-0.013797	±2.5	PASS
Band4	20MHz	16QAM	20050	100RB#0	VN	NT	-21.30	-0.012384	±2.5	PASS
Band4	20MHz	16QAM	20050	100RB#0	VH	NT	-22.92	-0.013326	±2.5	PASS
Band4	20MHz	16QAM	20175	100RB#0	VL	NT	-36.92	-0.021310	±2.5	PASS
Band4	20MHz	16QAM	20175	100RB#0	VN	NT	-33.83	-0.019527	±2.5	PASS
Band4	20MHz	16QAM	20175	100RB#0	VH	NT	-34.05	-0.019654	±2.5	PASS
Band4	20MHz	16QAM	20300	100RB#0	VL	NT	-14.33	-0.008212	±2.5	PASS
Band4	20MHz	16QAM	20300	100RB#0	VN	NT	44.72	0.025628	±2.5	PASS
Band4	20MHz	16QAM	20300	100RB#0	VH	NT	-11.50	-0.006590	±2.5	PASS

Temperature										
Band	Bandwidth	Modulation	Channel	RB Configure	Voltage [Vdc]	Temperature (°C)	Deviation (Hz)	Deviation (ppm)	Limit (ppm)	Verdict
Band4	1.4MHz	QPSK	19957	6RB#0	NV	-30	-14.48	-0.008464	±2.5	PASS
Band4	1.4MHz	QPSK	19957	6RB#0	NV	-20	-11.94	-0.006980	±2.5	PASS
Band4	1.4MHz	QPSK	19957	6RB#0	NV	-10	-12.82	-0.007494	±2.5	PASS
Band4	1.4MHz	QPSK	19957	6RB#0	NV	0	-8.88	-0.005191	±2.5	PASS
Band4	1.4MHz	QPSK	19957	6RB#0	NV	10	-12.23	-0.007149	±2.5	PASS
Band4	1.4MHz	QPSK	19957	6RB#0	NV	20	-10.74	-0.006278	±2.5	PASS
Band4	1.4MHz	QPSK	19957	6RB#0	NV	30	-4.61	-0.002695	±2.5	PASS
Band4	1.4MHz	QPSK	19957	6RB#0	NV	40	-4.72	-0.002759	±2.5	PASS
Band4	1.4MHz	QPSK	19957	6RB#0	NV	50	7.25	0.004238	±2.5	PASS
Band4	1.4MHz	QPSK	20175	6RB#0	NV	-30	-13.28	-0.007665	±2.5	PASS
Band4	1.4MHz	QPSK	20175	6RB#0	NV	-20	-21.99	-0.012693	±2.5	PASS
Band4	1.4MHz	QPSK	20175	6RB#0	NV	-10	-25.25	-0.014574	±2.5	PASS
Band4	1.4MHz	QPSK	20175	6RB#0	NV	0	-26.61	-0.015359	±2.5	PASS
Band4	1.4MHz	QPSK	20175	6RB#0	NV	10	-36.64	-0.021149	±2.5	PASS
Band4	1.4MHz	QPSK	20175	6RB#0	NV	20	-35.15	-0.020289	±2.5	PASS
Band4	1.4MHz	QPSK	20175	6RB#0	NV	30	-44.60	-0.025743	±2.5	PASS
Band4	1.4MHz	QPSK	20175	6RB#0	NV	40	9.86	0.005691	±2.5	PASS
Band4	1.4MHz	QPSK	20175	6RB#0	NV	50	7.67	0.004427	±2.5	PASS
Band4	1.4MHz	QPSK	20393	6RB#0	NV	-30	-17.62	-0.010044	±2.5	PASS
Band4	1.4MHz	QPSK	20393	6RB#0	NV	-20	-20.28	-0.011560	±2.5	PASS
Band4	1.4MHz	QPSK	20393	6RB#0	NV	-10	-20.63	-0.011760	±2.5	PASS
Band4	1.4MHz	QPSK	20393	6RB#0	NV	0	-23.63	-0.013470	±2.5	PASS
Band4	1.4MHz	QPSK	20393	6RB#0	NV	10	-21.20	-0.012085	±2.5	PASS
Band4	1.4MHz	QPSK	20393	6RB#0	NV	20	-14.86	-0.008471	±2.5	PASS
Band4	1.4MHz	QPSK	20393	6RB#0	NV	30	-13.99	-0.007975	±2.5	PASS
Band4	1.4MHz	QPSK	20393	6RB#0	NV	40	-12.02	-0.006852	±2.5	PASS
Band4	1.4MHz	QPSK	20393	6RB#0	NV	50	-14.23	-0.008111	±2.5	PASS
Band4	1.4MHz	16QAM	19957	6RB#0	NV	-30	18.15	0.010610	±2.5	PASS
Band4	1.4MHz	16QAM	19957	6RB#0	NV	-20	16.19	0.009464	±2.5	PASS
Band4	1.4MHz	16QAM	19957	6RB#0	NV	-10	20.28	0.011855	±2.5	PASS
Band4	1.4MHz	16QAM	19957	6RB#0	NV	0	21.13	0.012352	±2.5	PASS
Band4	1.4MHz	16QAM	19957	6RB#0	NV	10	21.43	0.012527	±2.5	PASS
Band4	1.4MHz	16QAM	19957	6RB#0	NV	20	26.94	0.015748	±2.5	PASS
Band4	1.4MHz	16QAM	19957	6RB#0	NV	30	27.95	0.016338	±2.5	PASS
Band4	1.4MHz	16QAM	19957	6RB#0	NV	40	-28.30	-0.016543	±2.5	PASS
Band4	1.4MHz	16QAM	19957	6RB#0	NV	50	-27.91	-0.016315	±2.5	PASS
Band4	1.4MHz	16QAM	20175	6RB#0	NV	-30	-11.16	-0.006442	±2.5	PASS
Band4	1.4MHz	16QAM	20175	6RB#0	NV	-20	-5.69	-0.003284	±2.5	PASS
Band4	1.4MHz	16QAM	20175	6RB#0	NV	-10	-12.45	-0.007186	±2.5	PASS
Band4	1.4MHz	16QAM	20175	6RB#0	NV	0	-8.17	-0.004716	±2.5	PASS
Band4	1.4MHz	16QAM	20175	6RB#0	NV	10	-12.50	-0.007215	±2.5	PASS
Band4	1.4MHz	16QAM	20175	6RB#0	NV	20	-11.64	-0.006719	±2.5	PASS
Band4	1.4MHz	16QAM	20175	6RB#0	NV	30	-15.25	-0.008802	±2.5	PASS
Band4	1.4MHz	16QAM	20175	6RB#0	NV	40	-15.23	-0.008791	±2.5	PASS
Band4	1.4MHz	16QAM	20175	6RB#0	NV	50	-15.72	-0.009074	±2.5	PASS
Band4	1.4MHz	16QAM	20393	6RB#0	NV	-30	-9.64	-0.005495	±2.5	PASS

Band4	1.4MHz	16QAM	20393	6RB#0	NV	-20	-6.95	-0.003962	±2.5	PASS
Band4	1.4MHz	16QAM	20393	6RB#0	NV	-10	-9.00	-0.005130	±2.5	PASS
Band4	1.4MHz	16QAM	20393	6RB#0	NV	0	-6.71	-0.003825	±2.5	PASS
Band4	1.4MHz	16QAM	20393	6RB#0	NV	10	-3.99	-0.002274	±2.5	PASS
Band4	1.4MHz	16QAM	20393	6RB#0	NV	20	-5.78	-0.003295	±2.5	PASS
Band4	1.4MHz	16QAM	20393	6RB#0	NV	30	-7.04	-0.004013	±2.5	PASS
Band4	1.4MHz	16QAM	20393	6RB#0	NV	40	-9.83	-0.005603	±2.5	PASS
Band4	1.4MHz	16QAM	20393	6RB#0	NV	50	9.58	0.005461	±2.5	PASS
Band4	3MHz	QPSK	19965	15RB#0	NV	-30	-7.28	-0.004254	±2.5	PASS
Band4	3MHz	QPSK	19965	15RB#0	NV	-20	-8.18	-0.004779	±2.5	PASS
Band4	3MHz	QPSK	19965	15RB#0	NV	-10	-6.57	-0.003839	±2.5	PASS
Band4	3MHz	QPSK	19965	15RB#0	NV	0	9.96	0.005819	±2.5	PASS
Band4	3MHz	QPSK	19965	15RB#0	NV	10	-6.49	-0.003792	±2.5	PASS
Band4	3MHz	QPSK	19965	15RB#0	NV	20	8.50	0.004966	±2.5	PASS
Band4	3MHz	QPSK	19965	15RB#0	NV	30	14.09	0.008233	±2.5	PASS
Band4	3MHz	QPSK	19965	15RB#0	NV	40	16.95	0.009904	±2.5	PASS
Band4	3MHz	QPSK	19965	15RB#0	NV	50	14.53	0.008490	±2.5	PASS
Band4	3MHz	QPSK	20175	15RB#0	NV	-30	-37.15	-0.021443	±2.5	PASS
Band4	3MHz	QPSK	20175	15RB#0	NV	-20	12.65	0.007302	±2.5	PASS
Band4	3MHz	QPSK	20175	15RB#0	NV	-10	12.33	0.007117	±2.5	PASS
Band4	3MHz	QPSK	20175	15RB#0	NV	0	9.27	0.005351	±2.5	PASS
Band4	3MHz	QPSK	20175	15RB#0	NV	10	-4.15	-0.002395	±2.5	PASS
Band4	3MHz	QPSK	20175	15RB#0	NV	20	-9.08	-0.005241	±2.5	PASS
Band4	3MHz	QPSK	20175	15RB#0	NV	30	-16.08	-0.009281	±2.5	PASS
Band4	3MHz	QPSK	20175	15RB#0	NV	40	-15.34	-0.008854	±2.5	PASS
Band4	3MHz	QPSK	20175	15RB#0	NV	50	-18.98	-0.010955	±2.5	PASS
Band4	3MHz	QPSK	20385	15RB#0	NV	-30	-25.01	-0.014263	±2.5	PASS
Band4	3MHz	QPSK	20385	15RB#0	NV	-20	-21.62	-0.012330	±2.5	PASS
Band4	3MHz	QPSK	20385	15RB#0	NV	-10	-21.63	-0.012335	±2.5	PASS
Band4	3MHz	QPSK	20385	15RB#0	NV	0	-19.71	-0.011240	±2.5	PASS
Band4	3MHz	QPSK	20385	15RB#0	NV	10	-16.49	-0.009404	±2.5	PASS
Band4	3MHz	QPSK	20385	15RB#0	NV	20	-15.92	-0.009079	±2.5	PASS
Band4	3MHz	QPSK	20385	15RB#0	NV	30	-16.24	-0.009261	±2.5	PASS
Band4	3MHz	QPSK	20385	15RB#0	NV	40	-12.85	-0.007328	±2.5	PASS
Band4	3MHz	QPSK	20385	15RB#0	NV	50	-13.53	-0.007716	±2.5	PASS
Band4	3MHz	16QAM	19965	15RB#0	NV	-30	22.54	0.013170	±2.5	PASS
Band4	3MHz	16QAM	19965	15RB#0	NV	-20	22.96	0.013415	±2.5	PASS
Band4	3MHz	16QAM	19965	15RB#0	NV	-10	25.66	0.014993	±2.5	PASS
Band4	3MHz	16QAM	19965	15RB#0	NV	0	31.53	0.018422	±2.5	PASS
Band4	3MHz	16QAM	19965	15RB#0	NV	10	33.47	0.019556	±2.5	PASS
Band4	3MHz	16QAM	19965	15RB#0	NV	20	32.20	0.018814	±2.5	PASS
Band4	3MHz	16QAM	19965	15RB#0	NV	30	31.87	0.018621	±2.5	PASS
Band4	3MHz	16QAM	19965	15RB#0	NV	40	33.42	0.019527	±2.5	PASS
Band4	3MHz	16QAM	19965	15RB#0	NV	50	33.56	0.019609	±2.5	PASS
Band4	3MHz	16QAM	20175	15RB#0	NV	-30	-25.68	-0.014823	±2.5	PASS
Band4	3MHz	16QAM	20175	15RB#0	NV	-20	-31.57	-0.018222	±2.5	PASS
Band4	3MHz	16QAM	20175	15RB#0	NV	-10	-34.93	-0.020162	±2.5	PASS
Band4	3MHz	16QAM	20175	15RB#0	NV	0	-32.13	-0.018545	±2.5	PASS
Band4	3MHz	16QAM	20175	15RB#0	NV	10	-31.87	-0.018395	±2.5	PASS
Band4	3MHz	16QAM	20175	15RB#0	NV	20	-40.21	-0.023209	±2.5	PASS

Band4	3MHz	16QAM	20175	15RB#0	NV	30	-41.18	-0.023769	±2.5	PASS
Band4	3MHz	16QAM	20175	15RB#0	NV	40	15.19	0.008768	±2.5	PASS
Band4	3MHz	16QAM	20175	15RB#0	NV	50	14.46	0.008346	±2.5	PASS
Band4	3MHz	16QAM	20385	15RB#0	NV	-30	-5.45	-0.003108	±2.5	PASS
Band4	3MHz	16QAM	20385	15RB#0	NV	-20	5.29	0.003017	±2.5	PASS
Band4	3MHz	16QAM	20385	15RB#0	NV	-10	8.48	0.004836	±2.5	PASS
Band4	3MHz	16QAM	20385	15RB#0	NV	0	4.75	0.002709	±2.5	PASS
Band4	3MHz	16QAM	20385	15RB#0	NV	10	-6.67	-0.003804	±2.5	PASS
Band4	3MHz	16QAM	20385	15RB#0	NV	20	6.69	0.003815	±2.5	PASS
Band4	3MHz	16QAM	20385	15RB#0	NV	30	9.38	0.005349	±2.5	PASS
Band4	3MHz	16QAM	20385	15RB#0	NV	40	8.84	0.005041	±2.5	PASS
Band4	3MHz	16QAM	20385	15RB#0	NV	50	10.10	0.005760	±2.5	PASS
Band4	5MHz	QPSK	19975	25RB#0	NV	-30	25.08	0.014645	±2.5	PASS
Band4	5MHz	QPSK	19975	25RB#0	NV	-20	29.28	0.017098	±2.5	PASS
Band4	5MHz	QPSK	19975	25RB#0	NV	-10	29.48	0.017215	±2.5	PASS
Band4	5MHz	QPSK	19975	25RB#0	NV	0	31.49	0.018388	±2.5	PASS
Band4	5MHz	QPSK	19975	25RB#0	NV	10	34.98	0.020426	±2.5	PASS
Band4	5MHz	QPSK	19975	25RB#0	NV	20	33.25	0.019416	±2.5	PASS
Band4	5MHz	QPSK	19975	25RB#0	NV	30	34.30	0.020029	±2.5	PASS
Band4	5MHz	QPSK	19975	25RB#0	NV	40	-18.38	-0.010733	±2.5	PASS
Band4	5MHz	QPSK	19975	25RB#0	NV	50	-14.92	-0.008712	±2.5	PASS
Band4	5MHz	QPSK	20175	25RB#0	NV	-30	10.66	0.006153	±2.5	PASS
Band4	5MHz	QPSK	20175	25RB#0	NV	-20	-5.29	-0.003053	±2.5	PASS
Band4	5MHz	QPSK	20175	25RB#0	NV	-10	-14.53	-0.008387	±2.5	PASS
Band4	5MHz	QPSK	20175	25RB#0	NV	0	-12.70	-0.007330	±2.5	PASS
Band4	5MHz	QPSK	20175	25RB#0	NV	10	-12.85	-0.007417	±2.5	PASS
Band4	5MHz	QPSK	20175	25RB#0	NV	20	-18.81	-0.010857	±2.5	PASS
Band4	5MHz	QPSK	20175	25RB#0	NV	30	-22.10	-0.012756	±2.5	PASS
Band4	5MHz	QPSK	20175	25RB#0	NV	40	-24.73	-0.014274	±2.5	PASS
Band4	5MHz	QPSK	20175	25RB#0	NV	50	-28.00	-0.016162	±2.5	PASS
Band4	5MHz	QPSK	20375	25RB#0	NV	-30	-15.54	-0.008867	±2.5	PASS
Band4	5MHz	QPSK	20375	25RB#0	NV	-20	-18.57	-0.010596	±2.5	PASS
Band4	5MHz	QPSK	20375	25RB#0	NV	-10	-12.75	-0.007275	±2.5	PASS
Band4	5MHz	QPSK	20375	25RB#0	NV	0	-13.95	-0.007960	±2.5	PASS
Band4	5MHz	QPSK	20375	25RB#0	NV	10	-11.69	-0.006670	±2.5	PASS
Band4	5MHz	QPSK	20375	25RB#0	NV	20	-10.03	-0.005723	±2.5	PASS
Band4	5MHz	QPSK	20375	25RB#0	NV	30	-14.03	-0.008006	±2.5	PASS
Band4	5MHz	QPSK	20375	25RB#0	NV	40	-12.06	-0.006882	±2.5	PASS
Band4	5MHz	QPSK	20375	25RB#0	NV	50	-13.05	-0.007447	±2.5	PASS
Band4	5MHz	16QAM	19975	25RB#0	NV	-30	-3.78	-0.002207	±2.5	PASS
Band4	5MHz	16QAM	19975	25RB#0	NV	-20	6.27	0.003661	±2.5	PASS
Band4	5MHz	16QAM	19975	25RB#0	NV	-10	4.08	0.002382	±2.5	PASS
Band4	5MHz	16QAM	19975	25RB#0	NV	0	4.89	0.002855	±2.5	PASS
Band4	5MHz	16QAM	19975	25RB#0	NV	10	4.58	0.002674	±2.5	PASS
Band4	5MHz	16QAM	19975	25RB#0	NV	20	14.88	0.008689	±2.5	PASS
Band4	5MHz	16QAM	19975	25RB#0	NV	30	8.35	0.004876	±2.5	PASS
Band4	5MHz	16QAM	19975	25RB#0	NV	40	11.76	0.006867	±2.5	PASS
Band4	5MHz	16QAM	19975	25RB#0	NV	50	12.17	0.007107	±2.5	PASS
Band4	5MHz	16QAM	20175	25RB#0	NV	-30	-40.40	-0.023319	±2.5	PASS
Band4	5MHz	16QAM	20175	25RB#0	NV	-20	-36.86	-0.021276	±2.5	PASS

Band4	5MHz	16QAM	20175	25RB#0	NV	-10	-39.87	-0.023013	±2.5	PASS
Band4	5MHz	16QAM	20175	25RB#0	NV	0	11.92	0.006880	±2.5	PASS
Band4	5MHz	16QAM	20175	25RB#0	NV	10	11.09	0.006401	±2.5	PASS
Band4	5MHz	16QAM	20175	25RB#0	NV	20	13.96	0.008058	±2.5	PASS
Band4	5MHz	16QAM	20175	25RB#0	NV	30	11.57	0.006678	±2.5	PASS
Band4	5MHz	16QAM	20175	25RB#0	NV	40	7.18	0.004144	±2.5	PASS
Band4	5MHz	16QAM	20175	25RB#0	NV	50	6.18	0.003567	±2.5	PASS
Band4	5MHz	16QAM	20375	25RB#0	NV	-30	-4.84	-0.002762	±2.5	PASS
Band4	5MHz	16QAM	20375	25RB#0	NV	-20	-5.12	-0.002922	±2.5	PASS
Band4	5MHz	16QAM	20375	25RB#0	NV	-10	-7.45	-0.004251	±2.5	PASS
Band4	5MHz	16QAM	20375	25RB#0	NV	0	-4.56	-0.002602	±2.5	PASS
Band4	5MHz	16QAM	20375	25RB#0	NV	10	6.34	0.003618	±2.5	PASS
Band4	5MHz	16QAM	20375	25RB#0	NV	20	6.87	0.003920	±2.5	PASS
Band4	5MHz	16QAM	20375	25RB#0	NV	30	7.82	0.004462	±2.5	PASS
Band4	5MHz	16QAM	20375	25RB#0	NV	40	11.99	0.006842	±2.5	PASS
Band4	5MHz	16QAM	20375	25RB#0	NV	50	12.77	0.007287	±2.5	PASS
Band4	10MHz	QPSK	20000	50RB#0	NV	-30	8.48	0.004945	±2.5	PASS
Band4	10MHz	QPSK	20000	50RB#0	NV	-20	7.27	0.004239	±2.5	PASS
Band4	10MHz	QPSK	20000	50RB#0	NV	-10	9.86	0.005749	±2.5	PASS
Band4	10MHz	QPSK	20000	50RB#0	NV	0	9.91	0.005778	±2.5	PASS
Band4	10MHz	QPSK	20000	50RB#0	NV	10	10.07	0.005872	±2.5	PASS
Band4	10MHz	QPSK	20000	50RB#0	NV	20	11.13	0.006490	±2.5	PASS
Band4	10MHz	QPSK	20000	50RB#0	NV	30	9.74	0.005679	±2.5	PASS
Band4	10MHz	QPSK	20000	50RB#0	NV	40	12.69	0.007399	±2.5	PASS
Band4	10MHz	QPSK	20000	50RB#0	NV	50	9.21	0.005370	±2.5	PASS
Band4	10MHz	QPSK	20175	50RB#0	NV	-30	-25.95	-0.014978	±2.5	PASS
Band4	10MHz	QPSK	20175	50RB#0	NV	-20	-29.13	-0.016814	±2.5	PASS
Band4	10MHz	QPSK	20175	50RB#0	NV	-10	-29.93	-0.017276	±2.5	PASS
Band4	10MHz	QPSK	20175	50RB#0	NV	0	-38.71	-0.022343	±2.5	PASS
Band4	10MHz	QPSK	20175	50RB#0	NV	10	10.47	0.006043	±2.5	PASS
Band4	10MHz	QPSK	20175	50RB#0	NV	20	8.68	0.005010	±2.5	PASS
Band4	10MHz	QPSK	20175	50RB#0	NV	30	6.01	0.003469	±2.5	PASS
Band4	10MHz	QPSK	20175	50RB#0	NV	40	-5.05	-0.002915	±2.5	PASS
Band4	10MHz	QPSK	20175	50RB#0	NV	50	-11.12	-0.006418	±2.5	PASS
Band4	10MHz	QPSK	20350	50RB#0	NV	-30	28.71	0.016406	±2.5	PASS
Band4	10MHz	QPSK	20350	50RB#0	NV	-20	25.81	0.014749	±2.5	PASS
Band4	10MHz	QPSK	20350	50RB#0	NV	-10	25.81	0.014749	±2.5	PASS
Band4	10MHz	QPSK	20350	50RB#0	NV	0	27.81	0.015891	±2.5	PASS
Band4	10MHz	QPSK	20350	50RB#0	NV	10	29.37	0.016783	±2.5	PASS
Band4	10MHz	QPSK	20350	50RB#0	NV	20	30.04	0.017166	±2.5	PASS
Band4	10MHz	QPSK	20350	50RB#0	NV	30	31.36	0.017920	±2.5	PASS
Band4	10MHz	QPSK	20350	50RB#0	NV	40	28.77	0.016440	±2.5	PASS
Band4	10MHz	QPSK	20350	50RB#0	NV	50	31.39	0.017937	±2.5	PASS
Band4	10MHz	16QAM	20000	50RB#0	NV	-30	15.26	0.008898	±2.5	PASS
Band4	10MHz	16QAM	20000	50RB#0	NV	-20	16.71	0.009743	±2.5	PASS
Band4	10MHz	16QAM	20000	50RB#0	NV	-10	20.76	0.012105	±2.5	PASS
Band4	10MHz	16QAM	20000	50RB#0	NV	0	21.14	0.012327	±2.5	PASS
Band4	10MHz	16QAM	20000	50RB#0	NV	10	23.76	0.013854	±2.5	PASS
Band4	10MHz	16QAM	20000	50RB#0	NV	20	24.19	0.014105	±2.5	PASS
Band4	10MHz	16QAM	20000	50RB#0	NV	30	22.52	0.013131	±2.5	PASS

Band4	10MHz	16QAM	20000	50RB#0	NV	40	20.56	0.011988	±2.5	PASS
Band4	10MHz	16QAM	20000	50RB#0	NV	50	24.92	0.014531	±2.5	PASS
Band4	10MHz	16QAM	20175	50RB#0	NV	-30	-19.25	-0.011111	±2.5	PASS
Band4	10MHz	16QAM	20175	50RB#0	NV	-20	-22.04	-0.012722	±2.5	PASS
Band4	10MHz	16QAM	20175	50RB#0	NV	-10	-20.90	-0.012063	±2.5	PASS
Band4	10MHz	16QAM	20175	50RB#0	NV	0	-23.89	-0.013789	±2.5	PASS
Band4	10MHz	16QAM	20175	50RB#0	NV	10	-24.75	-0.014286	±2.5	PASS
Band4	10MHz	16QAM	20175	50RB#0	NV	20	-24.69	-0.014251	±2.5	PASS
Band4	10MHz	16QAM	20175	50RB#0	NV	30	-26.15	-0.015094	±2.5	PASS
Band4	10MHz	16QAM	20175	50RB#0	NV	40	-21.50	-0.012410	±2.5	PASS
Band4	10MHz	16QAM	20175	50RB#0	NV	50	-24.73	-0.014274	±2.5	PASS
Band4	10MHz	16QAM	20350	50RB#0	NV	-30	37.49	0.021423	±2.5	PASS
Band4	10MHz	16QAM	20350	50RB#0	NV	-20	40.73	0.023274	±2.5	PASS
Band4	10MHz	16QAM	20350	50RB#0	NV	-10	40.25	0.023000	±2.5	PASS
Band4	10MHz	16QAM	20350	50RB#0	NV	0	-12.99	-0.007423	±2.5	PASS
Band4	10MHz	16QAM	20350	50RB#0	NV	10	-16.16	-0.009234	±2.5	PASS
Band4	10MHz	16QAM	20350	50RB#0	NV	20	-12.50	-0.007143	±2.5	PASS
Band4	10MHz	16QAM	20350	50RB#0	NV	30	-15.32	-0.008754	±2.5	PASS
Band4	10MHz	16QAM	20350	50RB#0	NV	40	-9.58	-0.005474	±2.5	PASS
Band4	10MHz	16QAM	20350	50RB#0	NV	50	-9.17	-0.005240	±2.5	PASS
Band4	15MHz	QPSK	20025	75RB#0	NV	-30	-10.51	-0.006119	±2.5	PASS
Band4	15MHz	QPSK	20025	75RB#0	NV	-20	-15.46	-0.009001	±2.5	PASS
Band4	15MHz	QPSK	20025	75RB#0	NV	-10	-15.52	-0.009036	±2.5	PASS
Band4	15MHz	QPSK	20025	75RB#0	NV	0	-16.16	-0.009409	±2.5	PASS
Band4	15MHz	QPSK	20025	75RB#0	NV	10	-22.83	-0.013293	±2.5	PASS
Band4	15MHz	QPSK	20025	75RB#0	NV	20	-24.62	-0.014335	±2.5	PASS
Band4	15MHz	QPSK	20025	75RB#0	NV	30	-24.60	-0.014323	±2.5	PASS
Band4	15MHz	QPSK	20025	75RB#0	NV	40	-23.02	-0.013403	±2.5	PASS
Band4	15MHz	QPSK	20025	75RB#0	NV	50	-28.57	-0.016635	±2.5	PASS
Band4	15MHz	QPSK	20175	75RB#0	NV	-30	-13.22	-0.007631	±2.5	PASS
Band4	15MHz	QPSK	20175	75RB#0	NV	-20	-14.98	-0.008646	±2.5	PASS
Band4	15MHz	QPSK	20175	75RB#0	NV	-10	-21.72	-0.012537	±2.5	PASS
Band4	15MHz	QPSK	20175	75RB#0	NV	0	-26.01	-0.015013	±2.5	PASS
Band4	15MHz	QPSK	20175	75RB#0	NV	10	-30.47	-0.017587	±2.5	PASS
Band4	15MHz	QPSK	20175	75RB#0	NV	20	-34.62	-0.019983	±2.5	PASS
Band4	15MHz	QPSK	20175	75RB#0	NV	30	-38.92	-0.022465	±2.5	PASS
Band4	15MHz	QPSK	20175	75RB#0	NV	40	-44.50	-0.025685	±2.5	PASS
Band4	15MHz	QPSK	20175	75RB#0	NV	50	7.04	0.004063	±2.5	PASS
Band4	15MHz	QPSK	20325	75RB#0	NV	-30	-20.03	-0.011462	±2.5	PASS
Band4	15MHz	QPSK	20325	75RB#0	NV	-20	-17.25	-0.009871	±2.5	PASS
Band4	15MHz	QPSK	20325	75RB#0	NV	-10	-13.75	-0.007868	±2.5	PASS
Band4	15MHz	QPSK	20325	75RB#0	NV	0	-12.09	-0.006918	±2.5	PASS
Band4	15MHz	QPSK	20325	75RB#0	NV	10	-12.37	-0.007079	±2.5	PASS
Band4	15MHz	QPSK	20325	75RB#0	NV	20	-9.43	-0.005396	±2.5	PASS
Band4	15MHz	QPSK	20325	75RB#0	NV	30	-11.69	-0.006690	±2.5	PASS
Band4	15MHz	QPSK	20325	75RB#0	NV	40	-12.65	-0.007239	±2.5	PASS
Band4	15MHz	QPSK	20325	75RB#0	NV	50	-7.40	-0.004235	±2.5	PASS
Band4	15MHz	16QAM	20025	75RB#0	NV	-30	-28.64	-0.016675	±2.5	PASS
Band4	15MHz	16QAM	20025	75RB#0	NV	-20	-29.21	-0.017007	±2.5	PASS
Band4	15MHz	16QAM	20025	75RB#0	NV	-10	-23.13	-0.013467	±2.5	PASS

Band4	15MHz	16QAM	20025	75RB#0	NV	0	-19.81	-0.011534	±2.5	PASS
Band4	15MHz	16QAM	20025	75RB#0	NV	10	-19.86	-0.011563	±2.5	PASS
Band4	15MHz	16QAM	20025	75RB#0	NV	20	-21.46	-0.012495	±2.5	PASS
Band4	15MHz	16QAM	20025	75RB#0	NV	30	-21.62	-0.012588	±2.5	PASS
Band4	15MHz	16QAM	20025	75RB#0	NV	40	-18.81	-0.010952	±2.5	PASS
Band4	15MHz	16QAM	20025	75RB#0	NV	50	-17.34	-0.010096	±2.5	PASS
Band4	15MHz	16QAM	20175	75RB#0	NV	-30	-13.12	-0.007573	±2.5	PASS
Band4	15MHz	16QAM	20175	75RB#0	NV	-20	-10.33	-0.005962	±2.5	PASS
Band4	15MHz	16QAM	20175	75RB#0	NV	-10	-12.02	-0.006938	±2.5	PASS
Band4	15MHz	16QAM	20175	75RB#0	NV	0	-12.80	-0.007388	±2.5	PASS
Band4	15MHz	16QAM	20175	75RB#0	NV	10	-11.50	-0.006638	±2.5	PASS
Band4	15MHz	16QAM	20175	75RB#0	NV	20	-15.52	-0.008958	±2.5	PASS
Band4	15MHz	16QAM	20175	75RB#0	NV	30	-20.37	-0.011758	±2.5	PASS
Band4	15MHz	16QAM	20175	75RB#0	NV	40	-16.15	-0.009322	±2.5	PASS
Band4	15MHz	16QAM	20175	75RB#0	NV	50	-19.04	-0.010990	±2.5	PASS
Band4	15MHz	16QAM	20325	75RB#0	NV	-30	-6.68	-0.003823	±2.5	PASS
Band4	15MHz	16QAM	20325	75RB#0	NV	-20	5.44	0.003113	±2.5	PASS
Band4	15MHz	16QAM	20325	75RB#0	NV	-10	9.08	0.005196	±2.5	PASS
Band4	15MHz	16QAM	20325	75RB#0	NV	0	13.22	0.007565	±2.5	PASS
Band4	15MHz	16QAM	20325	75RB#0	NV	10	14.02	0.008023	±2.5	PASS
Band4	15MHz	16QAM	20325	75RB#0	NV	20	16.72	0.009568	±2.5	PASS
Band4	15MHz	16QAM	20325	75RB#0	NV	30	12.75	0.007296	±2.5	PASS
Band4	15MHz	16QAM	20325	75RB#0	NV	40	15.68	0.008973	±2.5	PASS
Band4	15MHz	16QAM	20325	75RB#0	NV	50	20.51	0.011737	±2.5	PASS
Band4	20MHz	QPSK	20050	100RB#0	NV	-30	-13.69	-0.007959	±2.5	PASS
Band4	20MHz	QPSK	20050	100RB#0	NV	-20	-7.72	-0.004488	±2.5	PASS
Band4	20MHz	QPSK	20050	100RB#0	NV	-10	-16.14	-0.009384	±2.5	PASS
Band4	20MHz	QPSK	20050	100RB#0	NV	0	-16.09	-0.009355	±2.5	PASS
Band4	20MHz	QPSK	20050	100RB#0	NV	10	-18.17	-0.010564	±2.5	PASS
Band4	20MHz	QPSK	20050	100RB#0	NV	20	-18.02	-0.010477	±2.5	PASS
Band4	20MHz	QPSK	20050	100RB#0	NV	30	-16.95	-0.009855	±2.5	PASS
Band4	20MHz	QPSK	20050	100RB#0	NV	40	-18.37	-0.010680	±2.5	PASS
Band4	20MHz	QPSK	20050	100RB#0	NV	50	-21.21	-0.012331	±2.5	PASS
Band4	20MHz	QPSK	20175	100RB#0	NV	-30	-8.98	-0.005183	±2.5	PASS
Band4	20MHz	QPSK	20175	100RB#0	NV	-20	-14.83	-0.008560	±2.5	PASS
Band4	20MHz	QPSK	20175	100RB#0	NV	-10	-16.28	-0.009397	±2.5	PASS
Band4	20MHz	QPSK	20175	100RB#0	NV	0	-20.47	-0.011815	±2.5	PASS
Band4	20MHz	QPSK	20175	100RB#0	NV	10	-23.72	-0.013691	±2.5	PASS
Band4	20MHz	QPSK	20175	100RB#0	NV	20	-27.15	-0.015671	±2.5	PASS
Band4	20MHz	QPSK	20175	100RB#0	NV	30	-28.10	-0.016219	±2.5	PASS
Band4	20MHz	QPSK	20175	100RB#0	NV	40	-28.11	-0.016225	±2.5	PASS
Band4	20MHz	QPSK	20175	100RB#0	NV	50	-29.13	-0.016814	±2.5	PASS
Band4	20MHz	QPSK	20300	100RB#0	NV	-30	34.49	0.019765	±2.5	PASS
Band4	20MHz	QPSK	20300	100RB#0	NV	-20	37.45	0.021461	±2.5	PASS
Band4	20MHz	QPSK	20300	100RB#0	NV	-10	31.94	0.018304	±2.5	PASS
Band4	20MHz	QPSK	20300	100RB#0	NV	0	35.41	0.020292	±2.5	PASS
Band4	20MHz	QPSK	20300	100RB#0	NV	10	33.77	0.019352	±2.5	PASS
Band4	20MHz	QPSK	20300	100RB#0	NV	20	35.35	0.020258	±2.5	PASS
Band4	20MHz	QPSK	20300	100RB#0	NV	30	37.42	0.021444	±2.5	PASS
Band4	20MHz	QPSK	20300	100RB#0	NV	40	37.01	0.021209	±2.5	PASS

Band4	20MHz	QPSK	20300	100RB#0	NV	50	41.38	0.023713	±2.5	PASS
Band4	20MHz	16QAM	20050	100RB#0	NV	-30	-20.80	-0.012093	±2.5	PASS
Band4	20MHz	16QAM	20050	100RB#0	NV	-20	-19.47	-0.011320	±2.5	PASS
Band4	20MHz	16QAM	20050	100RB#0	NV	-10	-22.52	-0.013093	±2.5	PASS
Band4	20MHz	16QAM	20050	100RB#0	NV	0	-21.39	-0.012436	±2.5	PASS
Band4	20MHz	16QAM	20050	100RB#0	NV	10	-19.70	-0.011453	±2.5	PASS
Band4	20MHz	16QAM	20050	100RB#0	NV	20	-18.90	-0.010988	±2.5	PASS
Band4	20MHz	16QAM	20050	100RB#0	NV	30	-16.37	-0.009517	±2.5	PASS
Band4	20MHz	16QAM	20050	100RB#0	NV	40	-16.82	-0.009779	±2.5	PASS
Band4	20MHz	16QAM	20050	100RB#0	NV	50	-17.61	-0.010238	±2.5	PASS
Band4	20MHz	16QAM	20175	100RB#0	NV	-30	-36.22	-0.020906	±2.5	PASS
Band4	20MHz	16QAM	20175	100RB#0	NV	-20	-38.48	-0.022211	±2.5	PASS
Band4	20MHz	16QAM	20175	100RB#0	NV	-10	-36.56	-0.021102	±2.5	PASS
Band4	20MHz	16QAM	20175	100RB#0	NV	0	-40.57	-0.023417	±2.5	PASS
Band4	20MHz	16QAM	20175	100RB#0	NV	10	-38.02	-0.021945	±2.5	PASS
Band4	20MHz	16QAM	20175	100RB#0	NV	20	-40.96	-0.023642	±2.5	PASS
Band4	20MHz	16QAM	20175	100RB#0	NV	30	-40.71	-0.023498	±2.5	PASS
Band4	20MHz	16QAM	20175	100RB#0	NV	40	-43.87	-0.025322	±2.5	PASS
Band4	20MHz	16QAM	20175	100RB#0	NV	50	9.37	0.005408	±2.5	PASS
Band4	20MHz	16QAM	20300	100RB#0	NV	-30	-8.40	-0.004814	±2.5	PASS
Band4	20MHz	16QAM	20300	100RB#0	NV	-20	-6.21	-0.003559	±2.5	PASS
Band4	20MHz	16QAM	20300	100RB#0	NV	-10	-9.33	-0.005347	±2.5	PASS
Band4	20MHz	16QAM	20300	100RB#0	NV	0	-10.19	-0.005840	±2.5	PASS
Band4	20MHz	16QAM	20300	100RB#0	NV	10	-10.46	-0.005994	±2.5	PASS
Band4	20MHz	16QAM	20300	100RB#0	NV	20	-9.21	-0.005278	±2.5	PASS
Band4	20MHz	16QAM	20300	100RB#0	NV	30	-4.41	-0.002527	±2.5	PASS
Band4	20MHz	16QAM	20300	100RB#0	NV	40	-5.08	-0.002911	±2.5	PASS
Band4	20MHz	16QAM	20300	100RB#0	NV	50	4.71	0.002699	±2.5	PASS

Appendix G: Field strength of spurious radiation

Test Data:
QPSK

Mode:		LTE Traffic						
Band:		4	Channel:			19957		
Remark:		1.4MHz						
NO.	Freq. [MHz]	Height [cm]	Azimuth [deg]	Level [dBm]	Limit [dBm]	Margin [dB]	Result	Polarity
1	49.9860	150	95	-79.50	-13.00	66.50	Pass	Horizontal
2	104.8990	150	360	-80.24	-13.00	67.24	Pass	Horizontal
3	208.9038	150	18	-80.26	-13.00	67.26	Pass	Horizontal
4	600.0860	150	230	-76.26	-13.00	63.26	Pass	Horizontal
5	742.5105	150	77	-69.38	-13.00	56.38	Pass	Horizontal
6	960.8042	150	344	-71.47	-13.00	58.47	Pass	Horizontal
7	1274.4274	150	315	-48.81	-13.00	35.81	Pass	Horizontal
8	2961.7962	150	64	-45.45	-13.00	32.45	Pass	Horizontal
9	3421.4000	150	340	-50.23	-13.00	37.23	Pass	Horizontal
10	5132.7000	150	22	-49.89	-13.00	36.89	Pass	Horizontal
11	6842.8000	150	340	-50.19	-13.00	37.19	Pass	Horizontal
12	7677.9839	150	83	-44.40	-13.00	31.40	Pass	Horizontal

Mode:		LTE Traffic						
Band:		4	Channel:			19957		
Remark:		1.4MHz						
NO.	Freq. [MHz]	Height [cm]	Azimuth [deg]	Level [dBm]	Limit [dBm]	Margin [dB]	Result	Polarity
1	51.7323	150	17	-66.37	-13.00	53.37	Pass	Vertical
2	140.0200	150	158	-76.68	-13.00	63.68	Pass	Vertical
3	208.9038	150	17	-70.72	-13.00	57.72	Pass	Vertical
4	411.4803	150	158	-78.17	-13.00	65.17	Pass	Vertical
5	742.5105	150	190	-65.46	-13.00	52.46	Pass	Vertical
6	892.6965	150	107	-70.46	-13.00	57.46	Pass	Vertical
7	2995.5996	150	158	-44.44	-13.00	31.44	Pass	Vertical
8	3421.4000	150	146	-48.43	-13.00	35.43	Pass	Vertical
9	5132.7000	150	83	-50.79	-13.00	37.79	Pass	Vertical
10	6192.1596	150	296	-48.15	-13.00	35.15	Pass	Vertical
11	6842.8000	150	254	-51.65	-13.00	38.65	Pass	Vertical
12	8565.2783	150	103	-44.04	-13.00	31.04	Pass	Vertical

Mode:		LTE Traffic						
Band:		4		Channel:		20175		
Remark:		1.4MHz						
NO.	Freq. [MHz]	Height [cm]	Azimuth [deg]	Level [dBm]	Limit [dBm]	Margin [dB]	Result	Polarity
1	49.4039	150	114	-80.32	-13.00	67.32	Pass	Horizontal
2	140.0200	150	61	-80.13	-13.00	67.13	Pass	Horizontal
3	208.9038	150	114	-80.88	-13.00	67.88	Pass	Horizontal
4	440.0040	150	147	-78.36	-13.00	65.36	Pass	Horizontal
5	687.5975	150	160	-74.39	-13.00	61.39	Pass	Horizontal
6	742.5105	150	358	-68.77	-13.00	55.77	Pass	Horizontal
7	2999.3999	150	8	-45.44	-13.00	32.44	Pass	Horizontal
8	3465.0000	150	232	-49.50	-13.00	36.50	Pass	Horizontal
9	4647.0824	150	232	-48.18	-13.00	35.18	Pass	Horizontal
10	5197.5000	150	89	-51.97	-13.00	38.97	Pass	Horizontal
11	6930.0000	150	149	-50.21	-13.00	37.21	Pass	Horizontal
12	7680.9840	150	130	-44.41	-13.00	31.41	Pass	Horizontal

Mode:		LTE Traffic						
Band:		4		Channel:		20175		
Remark:		1.4MHz						
NO.	Freq. [MHz]	Height [cm]	Azimuth [deg]	Level [dBm]	Limit [dBm]	Margin [dB]	Result	Polarity
1	50.3741	150	360	-65.40	-13.00	52.40	Pass	Vertical
2	95.1970	150	256	-77.38	-13.00	64.38	Pass	Vertical
3	140.0200	150	360	-76.83	-13.00	63.83	Pass	Vertical
4	208.9038	150	290	-70.02	-13.00	57.02	Pass	Vertical
5	411.4803	150	45	-77.24	-13.00	64.24	Pass	Vertical
6	742.5105	150	237	-65.51	-13.00	52.51	Pass	Vertical
7	2986.7987	150	326	-45.06	-13.00	32.06	Pass	Vertical
8	3465.0000	150	168	-49.51	-13.00	36.51	Pass	Vertical
9	5197.5000	150	75	-50.25	-13.00	37.25	Pass	Vertical
10	6413.4207	150	208	-47.50	-13.00	34.50	Pass	Vertical
11	6930.0000	150	190	-48.49	-13.00	35.49	Pass	Vertical
12	9140.5570	150	26	-44.38	-13.00	31.38	Pass	Vertical

Mode:		LTE Traffic						
Band:		4		Channel:		20393		
Remark:		1.4MHz						
NO.	Freq. [MHz]	Height [cm]	Azimuth [deg]	Level [dBm]	Limit [dBm]	Margin [dB]	Result	Polarity
1	65.7031	150	0	-80.25	-13.00	67.25	Pass	Horizontal
2	110.9142	150	0	-79.61	-13.00	66.61	Pass	Horizontal
3	208.9038	150	76	-79.53	-13.00	66.53	Pass	Horizontal
4	440.0040	150	190	-78.87	-13.00	65.87	Pass	Horizontal
5	687.5975	150	217	-71.60	-13.00	58.60	Pass	Horizontal
6	894.6369	150	76	-65.29	-13.00	52.29	Pass	Horizontal
7	3190.5095	150	87	-45.33	-13.00	32.33	Pass	Horizontal
8	3508.6000	150	341	-49.53	-13.00	36.53	Pass	Horizontal
9	5262.9000	150	133	-51.40	-13.00	38.40	Pass	Horizontal
10	7017.2000	150	112	-48.94	-13.00	35.94	Pass	Horizontal
11	9700.8350	150	158	-41.39	-13.00	28.39	Pass	Horizontal
12	11797.1899	150	112	-41.66	-13.00	28.66	Pass	Horizontal

Mode:		LTE Traffic						
Band:		4		Channel:		20393		
Remark:		1.4MHz						
NO.	Freq. [MHz]	Height [cm]	Azimuth [deg]	Level [dBm]	Limit [dBm]	Margin [dB]	Result	Polarity
1	51.5383	150	234	-65.95	-13.00	52.95	Pass	Vertical
2	140.0200	150	36	-75.88	-13.00	62.88	Pass	Vertical
3	208.9038	150	135	-69.62	-13.00	56.62	Pass	Vertical
4	329.9840	150	276	-78.96	-13.00	65.96	Pass	Vertical
5	742.5105	150	358	-66.97	-13.00	53.97	Pass	Vertical
6	890.3681	150	261	-61.35	-13.00	48.35	Pass	Vertical
7	2985.5986	150	92	-45.53	-13.00	32.53	Pass	Vertical
8	3508.6000	150	298	-48.96	-13.00	35.96	Pass	Vertical
9	4547.3274	150	360	-48.21	-13.00	35.21	Pass	Vertical
10	5262.9000	150	20	-51.29	-13.00	38.29	Pass	Vertical
11	7017.2000	150	180	-48.39	-13.00	35.39	Pass	Vertical
12	9762.3381	150	360	-42.41	-13.00	29.41	Pass	Vertical

Mode:		LTE Traffic						
Band:		4			Channel:		19965	
Remark:		3MHz						
NO.	Freq. [MHz]	Height [cm]	Azimuth [deg]	Level [dBm]	Limit [dBm]	Margin [dB]	Result	Polarity
1	52.7025	150	45	-79.40	-13.00	66.40	Pass	Horizontal
2	208.9038	150	58	-79.84	-13.00	66.84	Pass	Horizontal
3	440.0040	150	360	-78.36	-13.00	65.36	Pass	Horizontal
4	625.1170	150	45	-75.19	-13.00	62.19	Pass	Horizontal
5	742.5105	150	164	-68.32	-13.00	55.32	Pass	Horizontal
6	897.7415	150	99	-64.25	-13.00	51.25	Pass	Horizontal
7	1307.8308	150	148	-48.55	-13.00	35.55	Pass	Horizontal
8	3423.0000	150	102	-50.16	-13.00	37.16	Pass	Horizontal
9	5134.5000	150	164	-49.69	-13.00	36.69	Pass	Horizontal
10	6428.4214	150	0	-47.49	-13.00	34.49	Pass	Horizontal
11	6846.0000	150	19	-50.38	-13.00	37.38	Pass	Horizontal
12	9708.3354	150	217	-44.60	-13.00	31.60	Pass	Horizontal

Mode:		LTE Traffic						
Band:		4			Channel:		19965	
Remark:		3MHz						
NO.	Freq. [MHz]	Height [cm]	Azimuth [deg]	Level [dBm]	Limit [dBm]	Margin [dB]	Result	Polarity
1	51.5383	150	316	-66.26	-13.00	53.26	Pass	Vertical
2	140.0200	150	112	-77.96	-13.00	64.96	Pass	Vertical
3	208.9038	150	250	-69.85	-13.00	56.85	Pass	Vertical
4	562.6365	150	203	-75.68	-13.00	62.68	Pass	Vertical
5	742.7045	150	329	-70.11	-13.00	57.11	Pass	Vertical
6	891.3383	150	359	-67.17	-13.00	54.17	Pass	Vertical
7	1302.8303	150	329	-47.63	-13.00	34.63	Pass	Vertical
8	2999.6000	150	5	-44.73	-13.00	31.73	Pass	Vertical
9	3423.0000	150	336	-49.69	-13.00	36.69	Pass	Vertical
10	5134.5000	150	101	-49.31	-13.00	36.31	Pass	Vertical
11	6846.0000	150	137	-50.92	-13.00	37.92	Pass	Vertical
12	8425.0213	150	357	-44.12	-13.00	31.12	Pass	Vertical

Mode:		LTE Traffic						
Band:		4		Channel:		20175		
Remark:		3MHz						
NO.	Freq. [MHz]	Height [cm]	Azimuth [deg]	Level [dBm]	Limit [dBm]	Margin [dB]	Result	Polarity
1	49.9860	150	2	-80.72	-13.00	67.72	Pass	Horizontal
2	140.0200	150	134	-80.07	-13.00	67.07	Pass	Horizontal
3	208.9038	150	64	-80.60	-13.00	67.60	Pass	Horizontal
4	440.0040	150	83	-77.01	-13.00	64.01	Pass	Horizontal
5	600.0860	150	360	-75.45	-13.00	62.45	Pass	Horizontal
6	742.5105	150	360	-69.41	-13.00	56.41	Pass	Horizontal
7	2726.9727	150	240	-45.24	-13.00	32.24	Pass	Horizontal
8	3465.0000	150	17	-49.52	-13.00	36.52	Pass	Horizontal
9	5197.5000	150	169	-51.72	-13.00	38.72	Pass	Horizontal
10	6426.1713	150	17	-47.21	-13.00	34.21	Pass	Horizontal
11	6930.0000	150	295	-48.83	-13.00	35.83	Pass	Horizontal
12	9779.5890	150	80	-44.97	-13.00	31.97	Pass	Horizontal

Mode:		LTE Traffic						
Band:		4		Channel:		20175		
Remark:		3MHz						
NO.	Freq. [MHz]	Height [cm]	Azimuth [deg]	Level [dBm]	Limit [dBm]	Margin [dB]	Result	Polarity
1	49.2098	150	79	-66.18	-13.00	53.18	Pass	Vertical
2	140.0200	150	128	-76.20	-13.00	63.20	Pass	Vertical
3	208.9038	150	270	-70.16	-13.00	57.16	Pass	Vertical
4	411.4803	150	168	-77.28	-13.00	64.28	Pass	Vertical
5	687.5975	150	67	-71.18	-13.00	58.18	Pass	Vertical
6	742.5105	150	168	-65.90	-13.00	52.90	Pass	Vertical
7	2989.5990	150	359	-45.01	-13.00	32.01	Pass	Vertical
8	3465.0000	150	251	-49.28	-13.00	36.28	Pass	Vertical
9	4572.0786	150	233	-47.66	-13.00	34.66	Pass	Vertical
10	5197.5000	150	17	-52.14	-13.00	39.14	Pass	Vertical
11	6930.0000	150	138	-50.19	-13.00	37.19	Pass	Vertical
12	9128.5564	150	64	-43.82	-13.00	30.82	Pass	Vertical

Mode:		LTE Traffic						
Band:		4		Channel:		20385		
Remark:		3MHz						
NO.	Freq. [MHz]	Height [cm]	Azimuth [deg]	Level [dBm]	Limit [dBm]	Margin [dB]	Result	Polarity
1	49.9860	150	1	-80.54	-13.00	67.54	Pass	Horizontal
2	140.0200	150	109	-79.74	-13.00	66.74	Pass	Horizontal
3	208.9038	150	38	-79.17	-13.00	66.17	Pass	Horizontal
4	274.2949	150	333	-80.98	-13.00	67.98	Pass	Horizontal
5	625.1170	150	24	-74.63	-13.00	61.63	Pass	Horizontal
6	891.1442	150	319	-71.99	-13.00	58.99	Pass	Horizontal
7	1400.8401	150	151	-48.32	-13.00	35.32	Pass	Horizontal
8	3507.0000	150	359	-49.09	-13.00	36.09	Pass	Horizontal
9	5260.5000	150	204	-51.70	-13.00	38.70	Pass	Horizontal
10	6491.4246	150	42	-46.90	-13.00	33.90	Pass	Horizontal
11	7014.0000	150	180	-48.46	-13.00	35.46	Pass	Horizontal
12	11785.1893	150	112	-41.58	-13.00	28.58	Pass	Horizontal

Mode:		LTE Traffic						
Band:		4		Channel:		20385		
Remark:		3MHz						
NO.	Freq. [MHz]	Height [cm]	Azimuth [deg]	Level [dBm]	Limit [dBm]	Margin [dB]	Result	Polarity
1	51.1502	150	235	-65.62	-13.00	52.62	Pass	Vertical
2	69.9720	150	277	-76.17	-13.00	63.17	Pass	Vertical
3	140.0200	150	346	-76.44	-13.00	63.44	Pass	Vertical
4	208.9038	150	1	-69.93	-13.00	56.93	Pass	Vertical
5	411.4803	150	249	-77.01	-13.00	64.01	Pass	Vertical
6	742.5105	150	249	-63.65	-13.00	50.65	Pass	Vertical
7	1369.6370	150	193	-48.08	-13.00	35.08	Pass	Vertical
8	3507.0000	150	359	-48.88	-13.00	35.88	Pass	Vertical
9	4478.3239	150	271	-47.73	-13.00	34.73	Pass	Vertical
10	5260.5000	150	271	-51.50	-13.00	38.50	Pass	Vertical
11	7014.0000	150	250	-48.62	-13.00	35.62	Pass	Vertical
12	11789.6895	150	317	-40.88	-13.00	27.88	Pass	Vertical

Mode:		LTE Traffic						
Band:		4			Channel:		19975	
Remark:		5MHz						
NO.	Freq. [MHz]	Height [cm]	Azimuth [deg]	Level [dBm]	Limit [dBm]	Margin [dB]	Result	Polarity
1	49.4039	150	162	-79.28	-13.00	66.28	Pass	Horizontal
2	100.6301	150	48	-80.94	-13.00	67.94	Pass	Horizontal
3	208.9038	150	162	-79.64	-13.00	66.64	Pass	Horizontal
4	440.0040	150	177	-78.74	-13.00	65.74	Pass	Horizontal
5	687.5975	150	245	-73.72	-13.00	60.72	Pass	Horizontal
6	742.5105	150	3	-67.59	-13.00	54.59	Pass	Horizontal
7	1275.0275	150	135	-48.59	-13.00	35.59	Pass	Horizontal
8	2765.3765	150	339	-45.54	-13.00	32.54	Pass	Horizontal
9	3425.0000	150	0	-49.69	-13.00	36.69	Pass	Horizontal
10	5137.5000	150	335	-51.18	-13.00	38.18	Pass	Horizontal
11	6850.0000	150	269	-50.48	-13.00	37.48	Pass	Horizontal
12	8467.0234	150	335	-43.93	-13.00	30.93	Pass	Horizontal

Mode:		LTE Traffic						
Band:		4			Channel:		19975	
Remark:		5MHz						
NO.	Freq. [MHz]	Height [cm]	Azimuth [deg]	Level [dBm]	Limit [dBm]	Margin [dB]	Result	Polarity
1	51.1502	150	3	-65.51	-13.00	52.51	Pass	Vertical
2	99.2719	150	84	-77.32	-13.00	64.32	Pass	Vertical
3	140.0200	150	330	-77.43	-13.00	64.43	Pass	Vertical
4	208.9038	150	239	-69.95	-13.00	56.95	Pass	Vertical
5	411.4803	150	19	-77.23	-13.00	64.23	Pass	Vertical
6	742.5105	150	129	-63.52	-13.00	50.52	Pass	Vertical
7	1400.0400	150	228	-48.43	-13.00	35.43	Pass	Vertical
8	2966.7967	150	50	-45.49	-13.00	32.49	Pass	Vertical
9	3425.0000	150	341	-50.56	-13.00	37.56	Pass	Vertical
10	5137.5000	150	103	-50.30	-13.00	37.30	Pass	Vertical
11	6850.0000	150	291	-51.10	-13.00	38.10	Pass	Vertical
12	9138.3069	150	224	-44.05	-13.00	31.05	Pass	Vertical

Mode:		LTE Traffic						
Band:		4		Channel:		20175		
Remark:		5MHz						
NO.	Freq. [MHz]	Height [cm]	Azimuth [deg]	Level [dBm]	Limit [dBm]	Margin [dB]	Result	Polarity
1	49.5979	150	112	-79.17	-13.00	66.17	Pass	Horizontal
2	104.5109	150	14	-78.73	-13.00	65.73	Pass	Horizontal
3	140.0200	150	177	-81.03	-13.00	68.03	Pass	Horizontal
4	208.9038	150	40	-80.83	-13.00	67.83	Pass	Horizontal
5	687.5975	150	150	-73.83	-13.00	60.83	Pass	Horizontal
6	742.5105	150	85	-68.90	-13.00	55.90	Pass	Horizontal
7	2407.3407	150	177	-45.87	-13.00	32.87	Pass	Horizontal
8	3465.0000	150	287	-50.01	-13.00	37.01	Pass	Horizontal
9	5197.5000	150	162	-50.89	-13.00	37.89	Pass	Horizontal
10	6366.9183	150	143	-47.23	-13.00	34.23	Pass	Horizontal
11	6930.0000	150	162	-49.64	-13.00	36.64	Pass	Horizontal
12	9823.0912	150	287	-42.94	-13.00	29.94	Pass	Horizontal

Mode:		LTE Traffic						
Band:		4		Channel:		20175		
Remark:		5MHz						
NO.	Freq. [MHz]	Height [cm]	Azimuth [deg]	Level [dBm]	Limit [dBm]	Margin [dB]	Result	Polarity
1	53.4787	150	92	-66.12	-13.00	53.12	Pass	Vertical
2	71.9124	150	278	-75.34	-13.00	62.34	Pass	Vertical
3	140.0200	150	360	-75.55	-13.00	62.55	Pass	Vertical
4	208.9038	150	243	-70.15	-13.00	57.15	Pass	Vertical
5	600.0860	150	63	-74.94	-13.00	61.94	Pass	Vertical
6	742.5105	150	110	-65.06	-13.00	52.06	Pass	Vertical
7	1304.8305	150	168	-48.21	-13.00	35.21	Pass	Vertical
8	2995.5996	150	278	-44.60	-13.00	31.60	Pass	Vertical
9	3465.0000	150	253	-50.40	-13.00	37.40	Pass	Vertical
10	5197.5000	150	206	-51.38	-13.00	38.38	Pass	Vertical
11	6930.0000	150	50	-49.87	-13.00	36.87	Pass	Vertical
12	8886.2943	150	97	-44.53	-13.00	31.53	Pass	Vertical

Mode:		LTE Traffic						
Band:		4		Channel:		20375		
Remark:		5MHz						
NO.	Freq. [MHz]	Height [cm]	Azimuth [deg]	Level [dBm]	Limit [dBm]	Margin [dB]	Result	Polarity
1	49.7920	150	165	-79.89	-13.00	66.89	Pass	Horizontal
2	119.4519	150	333	-80.79	-13.00	67.79	Pass	Horizontal
3	208.9038	150	67	-80.01	-13.00	67.01	Pass	Horizontal
4	418.8538	150	347	-78.43	-13.00	65.43	Pass	Horizontal
5	687.5975	150	220	-73.54	-13.00	60.54	Pass	Horizontal
6	742.5105	150	94	-68.63	-13.00	55.63	Pass	Horizontal
7	1370.6371	150	262	-47.81	-13.00	34.81	Pass	Horizontal
8	3505.0000	150	180	-48.38	-13.00	35.38	Pass	Horizontal
9	4656.0828	150	2	-46.90	-13.00	33.90	Pass	Horizontal
10	5257.5000	150	20	-50.69	-13.00	37.69	Pass	Horizontal
11	7010.0000	150	227	-48.54	-13.00	35.54	Pass	Horizontal
12	11788.9394	150	113	-41.02	-13.00	28.02	Pass	Horizontal

Mode:		LTE Traffic						
Band:		4		Channel:		20375		
Remark:		5MHz						
NO.	Freq. [MHz]	Height [cm]	Azimuth [deg]	Level [dBm]	Limit [dBm]	Margin [dB]	Result	Polarity
1	51.5383	150	278	-65.41	-13.00	52.41	Pass	Vertical
2	69.1958	150	291	-76.73	-13.00	63.73	Pass	Vertical
3	140.0200	150	304	-75.67	-13.00	62.67	Pass	Vertical
4	208.9038	150	164	-70.49	-13.00	57.49	Pass	Vertical
5	411.4803	150	262	-77.68	-13.00	64.68	Pass	Vertical
6	742.5105	150	291	-66.25	-13.00	53.25	Pass	Vertical
7	2708.9709	150	0	-45.23	-13.00	32.23	Pass	Vertical
8	3505.0000	150	66	-49.52	-13.00	36.52	Pass	Vertical
9	4566.0783	150	20	-48.24	-13.00	35.24	Pass	Vertical
10	5257.5000	150	272	-51.28	-13.00	38.28	Pass	Vertical
11	7010.0000	150	42	-48.93	-13.00	35.93	Pass	Vertical
12	11805.4403	150	66	-41.09	-13.00	28.09	Pass	Vertical

Mode:		LTE Traffic						
Band:		4		Channel:		20000		
Remark:		10MHz						
NO.	Freq. [MHz]	Height [cm]	Azimuth [deg]	Level [dBm]	Limit [dBm]	Margin [dB]	Result	Polarity
1	49.0158	150	259	-79.92	-13.00	66.92	Pass	Horizontal
2	111.3023	150	342	-80.67	-13.00	67.67	Pass	Horizontal
3	208.9038	150	64	-80.32	-13.00	67.32	Pass	Horizontal
4	360.0600	150	355	-77.98	-13.00	64.98	Pass	Horizontal
5	687.5975	150	231	-73.96	-13.00	60.96	Pass	Horizontal
6	742.5105	150	189	-68.55	-13.00	55.55	Pass	Horizontal
7	3430.0000	150	212	-50.03	-13.00	37.03	Pass	Horizontal
8	3844.5422	150	118	-48.11	-13.00	35.11	Pass	Horizontal
9	4732.5866	150	98	-48.04	-13.00	35.04	Pass	Horizontal
10	5145.0000	150	141	-50.11	-13.00	37.11	Pass	Horizontal
11	6860.0000	150	0	-50.81	-13.00	37.81	Pass	Horizontal
12	7718.4859	150	335	-44.93	-13.00	31.93	Pass	Horizontal

Mode:		LTE Traffic						
Band:		4		Channel:		20000		
Remark:		10MHz						
NO.	Freq. [MHz]	Height [cm]	Azimuth [deg]	Level [dBm]	Limit [dBm]	Margin [dB]	Result	Polarity
1	51.1502	150	144	-65.62	-13.00	52.62	Pass	Vertical
2	140.0200	150	254	-77.33	-13.00	64.33	Pass	Vertical
3	208.9038	150	278	-70.50	-13.00	57.50	Pass	Vertical
4	411.4803	150	239	-76.92	-13.00	63.92	Pass	Vertical
5	742.5105	150	2	-64.78	-13.00	51.78	Pass	Vertical
6	890.9502	150	98	-67.57	-13.00	54.57	Pass	Vertical
7	2996.9997	150	157	-44.42	-13.00	31.42	Pass	Vertical
8	3430.0000	150	114	-49.47	-13.00	36.47	Pass	Vertical
9	5145.0000	150	310	-51.08	-13.00	38.08	Pass	Vertical
10	6860.0000	150	114	-50.26	-13.00	37.26	Pass	Vertical
11	9240.3120	150	245	-43.60	-13.00	30.60	Pass	Vertical
12	11812.9406	150	23	-46.51	-13.00	33.51	Pass	Vertical

Mode:		LTE Traffic						
Band:		4		Channel:		20175		
Remark:		10MHz						
NO.	Freq. [MHz]	Height [cm]	Azimuth [deg]	Level [dBm]	Limit [dBm]	Margin [dB]	Result	Polarity
1	49.2098	150	245	-80.59	-13.00	67.59	Pass	Horizontal
2	140.0200	150	319	-80.14	-13.00	67.14	Pass	Horizontal
3	208.9038	150	33	-80.40	-13.00	67.40	Pass	Horizontal
4	342.2084	150	71	-79.22	-13.00	66.22	Pass	Horizontal
5	440.0040	150	284	-78.59	-13.00	65.59	Pass	Horizontal
6	742.5105	150	46	-67.81	-13.00	54.81	Pass	Horizontal
7	2727.1727	150	99	-44.91	-13.00	31.91	Pass	Horizontal
8	3465.0000	150	239	-49.77	-13.00	36.77	Pass	Horizontal
9	5197.5000	150	283	-50.63	-13.00	37.63	Pass	Horizontal
10	5572.6286	150	59	-48.76	-13.00	35.76	Pass	Horizontal
11	6930.0000	150	167	-49.76	-13.00	36.76	Pass	Horizontal
12	8644.7822	150	0	-44.71	-13.00	31.71	Pass	Horizontal

Mode:		LTE Traffic						
Band:		4		Channel:		20175		
Remark:		10MHz						
NO.	Freq. [MHz]	Height [cm]	Azimuth [deg]	Level [dBm]	Limit [dBm]	Margin [dB]	Result	Polarity
1	52.5085	150	302	-65.93	-13.00	52.93	Pass	Vertical
2	94.8090	150	2	-78.15	-13.00	65.15	Pass	Vertical
3	140.0200	150	360	-76.42	-13.00	63.42	Pass	Vertical
4	208.9038	150	230	-70.38	-13.00	57.38	Pass	Vertical
5	600.0860	150	15	-75.13	-13.00	62.13	Pass	Vertical
6	742.5105	150	203	-65.40	-13.00	52.40	Pass	Vertical
7	2900.7901	150	218	-45.59	-13.00	32.59	Pass	Vertical
8	3465.0000	150	78	-49.44	-13.00	36.44	Pass	Vertical
9	4472.3236	150	348	-48.16	-13.00	35.16	Pass	Vertical
10	5197.5000	150	229	-51.08	-13.00	38.08	Pass	Vertical
11	6930.0000	150	137	-49.92	-13.00	36.92	Pass	Vertical
12	9229.0615	150	162	-44.60	-13.00	31.60	Pass	Vertical

Mode:		LTE Traffic						
Band:		4		Channel:		20350		
Remark:		10MHz						
NO.	Freq. [MHz]	Height [cm]	Azimuth [deg]	Level [dBm]	Limit [dBm]	Margin [dB]	Result	Polarity
1	49.5979	150	345	-79.77	-13.00	66.77	Pass	Horizontal
2	140.0200	150	173	-79.27	-13.00	66.27	Pass	Horizontal
3	208.9038	150	79	-80.00	-13.00	67.00	Pass	Horizontal
4	409.5399	150	49	-78.72	-13.00	65.72	Pass	Horizontal
5	625.1170	150	160	-74.85	-13.00	61.85	Pass	Horizontal
6	742.5105	150	232	-71.97	-13.00	58.97	Pass	Horizontal
7	1269.0269	150	17	-48.16	-13.00	35.16	Pass	Horizontal
8	2900.7901	150	232	-44.80	-13.00	31.80	Pass	Horizontal
9	3500.0000	150	42	-49.63	-13.00	36.63	Pass	Horizontal
10	5250.0000	150	218	-50.89	-13.00	37.89	Pass	Horizontal
11	7000.0000	150	21	-48.12	-13.00	35.12	Pass	Horizontal
12	9694.8347	150	170	-42.09	-13.00	29.09	Pass	Horizontal

Mode:		LTE Traffic						
Band:		4		Channel:		20350		
Remark:		10MHz						
NO.	Freq. [MHz]	Height [cm]	Azimuth [deg]	Level [dBm]	Limit [dBm]	Margin [dB]	Result	Polarity
1	51.1502	150	290	-65.56	-13.00	52.56	Pass	Vertical
2	140.0200	150	276	-76.62	-13.00	63.62	Pass	Vertical
3	208.9038	150	56	-70.53	-13.00	57.53	Pass	Vertical
4	290.0120	150	234	-78.93	-13.00	65.93	Pass	Vertical
5	411.4803	150	177	-77.76	-13.00	64.76	Pass	Vertical
6	714.1808	150	150	-70.57	-13.00	57.57	Pass	Vertical
7	1291.4291	150	359	-48.40	-13.00	35.40	Pass	Vertical
8	2727.7728	150	346	-44.56	-13.00	31.56	Pass	Vertical
9	3500.0000	150	360	-49.03	-13.00	36.03	Pass	Vertical
10	5250.0000	150	21	-51.95	-13.00	38.95	Pass	Vertical
11	7000.0000	150	301	-49.34	-13.00	36.34	Pass	Vertical
12	11767.1884	150	69	-41.71	-13.00	28.71	Pass	Vertical

Mode:		LTE Traffic						
Band:		4		Channel:		20025		
Remark:		15MHz						
NO.	Freq. [MHz]	Height [cm]	Azimuth [deg]	Level [dBm]	Limit [dBm]	Margin [dB]	Result	Polarity
1	102.9586	150	126	-79.64	-13.00	66.64	Pass	Horizontal
2	140.0200	150	30	-80.87	-13.00	67.87	Pass	Horizontal
3	208.9038	150	112	-80.38	-13.00	67.38	Pass	Horizontal
4	440.0040	150	285	-78.17	-13.00	65.17	Pass	Horizontal
5	625.1170	150	151	-74.11	-13.00	61.11	Pass	Horizontal
6	742.5105	150	97	-68.34	-13.00	55.34	Pass	Horizontal
7	2959.7960	150	4	-45.55	-13.00	32.55	Pass	Horizontal
8	3435.0000	150	30	-50.32	-13.00	37.32	Pass	Horizontal
9	5094.1047	150	9	-47.55	-13.00	34.55	Pass	Horizontal
10	5152.5000	150	146	-50.58	-13.00	37.58	Pass	Horizontal
11	6870.0000	150	61	-50.97	-13.00	37.97	Pass	Horizontal
12	8431.7716	150	189	-44.58	-13.00	31.58	Pass	Horizontal

Mode:		LTE Traffic						
Band:		4		Channel:		20025		
Remark:		15MHz						
NO.	Freq. [MHz]	Height [cm]	Azimuth [deg]	Level [dBm]	Limit [dBm]	Margin [dB]	Result	Polarity
1	51.3443	150	80	-66.25	-13.00	53.25	Pass	Vertical
2	95.1970	150	305	-78.57	-13.00	65.57	Pass	Vertical
3	140.0200	150	305	-76.74	-13.00	63.74	Pass	Vertical
4	208.9038	150	256	-70.44	-13.00	57.44	Pass	Vertical
5	411.4803	150	305	-76.87	-13.00	63.87	Pass	Vertical
6	742.5105	150	348	-64.47	-13.00	51.47	Pass	Vertical
7	3000.0000	150	286	-45.11	-13.00	32.11	Pass	Vertical
8	3435.0000	150	208	-50.03	-13.00	37.03	Pass	Vertical
9	4473.8237	150	0	-47.66	-13.00	34.66	Pass	Vertical
10	5152.5000	150	94	-50.30	-13.00	37.30	Pass	Vertical
11	6870.0000	150	0	-50.07	-13.00	37.07	Pass	Vertical
12	8135.5068	150	208	-44.53	-13.00	31.53	Pass	Vertical

Mode:		LTE Traffic						
Band:		4		Channel:		20175		
Remark:		15MHz						
NO.	Freq. [MHz]	Height [cm]	Azimuth [deg]	Level [dBm]	Limit [dBm]	Margin [dB]	Result	Polarity
1	50.5681	150	284	-79.45	-13.00	66.45	Pass	Horizontal
2	98.1076	150	84	-80.45	-13.00	67.45	Pass	Horizontal
3	140.0200	150	104	-81.75	-13.00	68.75	Pass	Horizontal
4	208.9038	150	84	-80.20	-13.00	67.20	Pass	Horizontal
5	625.1170	150	332	-74.23	-13.00	61.23	Pass	Horizontal
6	742.5105	150	227	-68.39	-13.00	55.39	Pass	Horizontal
7	1210.0210	150	205	-48.56	-13.00	35.56	Pass	Horizontal
8	3465.0000	150	117	-50.92	-13.00	37.92	Pass	Horizontal
9	3936.7968	150	0	-47.88	-13.00	34.88	Pass	Horizontal
10	5197.5000	150	0	-50.90	-13.00	37.90	Pass	Horizontal
11	6930.0000	150	194	-50.56	-13.00	37.56	Pass	Horizontal
12	7782.2391	150	0	-45.01	-13.00	32.01	Pass	Horizontal

Mode:		LTE Traffic						
Band:		4		Channel:		20175		
Remark:		15MHz						
NO.	Freq. [MHz]	Height [cm]	Azimuth [deg]	Level [dBm]	Limit [dBm]	Margin [dB]	Result	Polarity
1	52.3145	150	90	-66.58	-13.00	53.58	Pass	Vertical
2	95.1970	150	303	-78.49	-13.00	65.49	Pass	Vertical
3	140.0200	150	68	-75.98	-13.00	62.98	Pass	Vertical
4	208.9038	150	181	-70.24	-13.00	57.24	Pass	Vertical
5	290.0120	150	20	-78.38	-13.00	65.38	Pass	Vertical
6	742.5105	150	2	-65.43	-13.00	52.43	Pass	Vertical
7	1302.4302	150	218	-47.92	-13.00	34.92	Pass	Vertical
8	2927.5928	150	135	-45.31	-13.00	32.31	Pass	Vertical
9	3465.0000	150	100	-50.04	-13.00	37.04	Pass	Vertical
10	5197.5000	150	290	-52.06	-13.00	39.06	Pass	Vertical
11	6930.0000	150	0	-49.27	-13.00	36.27	Pass	Vertical
12	9109.0555	150	62	-44.20	-13.00	31.20	Pass	Vertical

Mode:		LTE Traffic						
Band:		4		Channel:		20325		
Remark:		15MHz						
NO.	Freq. [MHz]	Height [cm]	Azimuth [deg]	Level [dBm]	Limit [dBm]	Margin [dB]	Result	Polarity
1	49.5979	150	79	-79.32	-13.00	66.32	Pass	Horizontal
2	140.0200	150	192	-80.39	-13.00	67.39	Pass	Horizontal
3	208.9038	150	37	-79.94	-13.00	66.94	Pass	Horizontal
4	360.0600	150	135	-79.14	-13.00	66.14	Pass	Horizontal
5	687.5975	150	262	-74.09	-13.00	61.09	Pass	Horizontal
6	742.5105	150	93	-71.48	-13.00	58.48	Pass	Horizontal
7	1257.8258	150	346	-48.08	-13.00	35.08	Pass	Horizontal
8	3495.0000	150	134	-49.67	-13.00	36.67	Pass	Horizontal
9	5242.5000	150	359	-51.33	-13.00	38.33	Pass	Horizontal
10	6384.9192	150	20	-47.31	-13.00	34.31	Pass	Horizontal
11	6990.0000	150	134	-49.38	-13.00	36.38	Pass	Horizontal
12	11788.1894	150	159	-41.48	-13.00	28.48	Pass	Horizontal

Mode:		LTE Traffic						
Band:		4		Channel:		20325		
Remark:		15MHz						
NO.	Freq. [MHz]	Height [cm]	Azimuth [deg]	Level [dBm]	Limit [dBm]	Margin [dB]	Result	Polarity
1	50.9562	150	248	-64.95	-13.00	51.95	Pass	Vertical
2	95.3911	150	262	-79.12	-13.00	66.12	Pass	Vertical
3	140.0200	150	304	-78.03	-13.00	65.03	Pass	Vertical
4	208.9038	150	0	-70.11	-13.00	57.11	Pass	Vertical
5	411.4803	150	135	-76.72	-13.00	63.72	Pass	Vertical
6	742.5105	150	79	-65.93	-13.00	52.93	Pass	Vertical
7	2715.3715	150	121	-44.88	-13.00	31.88	Pass	Vertical
8	3495.0000	150	300	-48.25	-13.00	35.25	Pass	Vertical
9	4473.8237	150	43	-48.03	-13.00	35.03	Pass	Vertical
10	5242.5000	150	89	-51.43	-13.00	38.43	Pass	Vertical
11	6990.0000	150	322	-49.82	-13.00	36.82	Pass	Vertical
12	9754.8377	150	116	-41.39	-13.00	28.39	Pass	Vertical

Mode:		LTE Traffic						
Band:		4		Channel:		20050		
Remark:		20MHz						
NO.	Freq. [MHz]	Height [cm]	Azimuth [deg]	Level [dBm]	Limit [dBm]	Margin [dB]	Result	Polarity
1	49.9860	150	204	-79.63	-13.00	66.63	Pass	Horizontal
2	120.0340	150	89	-80.51	-13.00	67.51	Pass	Horizontal
3	208.9038	150	63	-80.24	-13.00	67.24	Pass	Horizontal
4	440.0040	150	283	-77.96	-13.00	64.96	Pass	Horizontal
5	687.5975	150	63	-72.69	-13.00	59.69	Pass	Horizontal
6	742.5105	150	243	-67.27	-13.00	54.27	Pass	Horizontal
7	2453.5454	150	173	-45.65	-13.00	32.65	Pass	Horizontal
8	3440.0000	150	181	-50.77	-13.00	37.77	Pass	Horizontal
9	5160.0000	150	23	-51.67	-13.00	38.67	Pass	Horizontal
10	6456.1728	150	66	-47.45	-13.00	34.45	Pass	Horizontal
11	6880.0000	150	136	-49.36	-13.00	36.36	Pass	Horizontal
12	8982.2991	150	221	-43.77	-13.00	30.77	Pass	Horizontal

Mode:		LTE Traffic						
Band:		4		Channel:		20050		
Remark:		20MHz						
NO.	Freq. [MHz]	Height [cm]	Azimuth [deg]	Level [dBm]	Limit [dBm]	Margin [dB]	Result	Polarity
1	52.5085	150	146	-65.58	-13.00	52.58	Pass	Vertical
2	140.0200	150	26	-77.64	-13.00	64.64	Pass	Vertical
3	208.9038	150	158	-70.22	-13.00	57.22	Pass	Vertical
4	329.9840	150	308	-78.55	-13.00	65.55	Pass	Vertical
5	440.0040	150	266	-77.45	-13.00	64.45	Pass	Vertical
6	742.5105	150	358	-65.27	-13.00	52.27	Pass	Vertical
7	2996.3996	150	176	-45.45	-13.00	32.45	Pass	Vertical
8	3440.0000	150	175	-49.01	-13.00	36.01	Pass	Vertical
9	5160.0000	150	303	-51.08	-13.00	38.08	Pass	Vertical
10	6510.1755	150	98	-47.23	-13.00	34.23	Pass	Vertical
11	6880.0000	150	198	-51.25	-13.00	38.25	Pass	Vertical
12	9062.5531	150	198	-43.77	-13.00	30.77	Pass	Vertical

Mode:		LTE Traffic						
Band:		4		Channel:		20175		
Remark:		20MHz						
NO.	Freq. [MHz]	Height [cm]	Azimuth [deg]	Level [dBm]	Limit [dBm]	Margin [dB]	Result	Polarity
1	49.7920	150	360	-80.85	-13.00	67.85	Pass	Horizontal
2	107.2274	150	35	-80.58	-13.00	67.58	Pass	Horizontal
3	208.9038	150	35	-80.53	-13.00	67.53	Pass	Horizontal
4	440.0040	150	1	-78.35	-13.00	65.35	Pass	Horizontal
5	742.5105	150	35	-70.27	-13.00	57.27	Pass	Horizontal
6	874.2629	150	72	-71.52	-13.00	58.52	Pass	Horizontal
7	1305.2305	150	35	-48.45	-13.00	35.45	Pass	Horizontal
8	3016.5008	150	0	-45.04	-13.00	32.04	Pass	Horizontal
9	3465.0000	150	180	-49.54	-13.00	36.54	Pass	Horizontal
10	5197.5000	150	324	-50.30	-13.00	37.30	Pass	Horizontal
11	6930.0000	150	63	-48.53	-13.00	35.53	Pass	Horizontal
12	8413.7707	150	104	-44.55	-13.00	31.55	Pass	Horizontal

Mode:		LTE Traffic						
Band:		4		Channel:		20175		
Remark:		20MHz						
NO.	Freq. [MHz]	Height [cm]	Azimuth [deg]	Level [dBm]	Limit [dBm]	Margin [dB]	Result	Polarity
1	51.5383	150	186	-66.62	-13.00	53.62	Pass	Vertical
2	71.9124	150	146	-75.62	-13.00	62.62	Pass	Vertical
3	140.0200	150	352	-76.17	-13.00	63.17	Pass	Vertical
4	208.9038	150	186	-70.63	-13.00	57.63	Pass	Vertical
5	600.0860	150	310	-74.62	-13.00	61.62	Pass	Vertical
6	742.5105	150	352	-65.37	-13.00	52.37	Pass	Vertical
7	2980.1980	150	286	-44.98	-13.00	31.98	Pass	Vertical
8	3465.0000	150	353	-49.86	-13.00	36.86	Pass	Vertical
9	4677.0839	150	298	-48.46	-13.00	35.46	Pass	Vertical
10	5197.5000	150	71	-51.14	-13.00	38.14	Pass	Vertical
11	6930.0000	150	113	-50.55	-13.00	37.55	Pass	Vertical
12	9699.3350	150	30	-44.04	-13.00	31.04	Pass	Vertical

Mode:		LTE Traffic						
Band:		4		Channel:		20300		
Remark:		20MHz						
NO.	Freq. [MHz]	Height [cm]	Azimuth [deg]	Level [dBm]	Limit [dBm]	Margin [dB]	Result	Polarity
1	56.1952	150	108	-79.96	-13.00	66.96	Pass	Horizontal
2	124.6909	150	177	-80.11	-13.00	67.11	Pass	Horizontal
3	208.9038	150	37	-80.76	-13.00	67.76	Pass	Horizontal
4	600.0860	150	234	-74.98	-13.00	61.98	Pass	Horizontal
5	742.5105	150	358	-68.65	-13.00	55.65	Pass	Horizontal
6	897.7415	150	290	-69.52	-13.00	56.52	Pass	Horizontal
7	1338.6339	150	108	-47.90	-13.00	34.90	Pass	Horizontal
8	2916.7917	150	290	-45.50	-13.00	32.50	Pass	Horizontal
9	3490.0000	150	252	-49.66	-13.00	36.66	Pass	Horizontal
10	5235.0000	150	88	-50.08	-13.00	37.08	Pass	Horizontal
11	6980.0000	150	359	-48.61	-13.00	35.61	Pass	Horizontal
12	9697.0849	150	113	-41.24	-13.00	28.24	Pass	Horizontal

Mode:		LTE Traffic						
Band:		4		Channel:		20300		
Remark:		20MHz						
NO.	Freq. [MHz]	Height [cm]	Azimuth [deg]	Level [dBm]	Limit [dBm]	Margin [dB]	Result	Polarity
1	50.7622	150	93	-64.23	-13.00	51.23	Pass	Vertical
2	94.8090	150	220	-78.25	-13.00	65.25	Pass	Vertical
3	140.0200	150	1	-76.85	-13.00	63.85	Pass	Vertical
4	208.9038	150	24	-70.37	-13.00	57.37	Pass	Vertical
5	270.0260	150	80	-79.04	-13.00	66.04	Pass	Vertical
6	742.5105	150	80	-67.01	-13.00	54.01	Pass	Vertical
7	2410.9411	150	178	-45.41	-13.00	32.41	Pass	Vertical
8	3490.0000	150	251	-49.59	-13.00	36.59	Pass	Vertical
9	4574.3287	150	20	-47.74	-13.00	34.74	Pass	Vertical
10	5235.0000	150	88	-51.26	-13.00	38.26	Pass	Vertical
11	6980.0000	150	360	-48.93	-13.00	35.93	Pass	Vertical
12	9697.0849	150	1	-41.85	-13.00	28.85	Pass	Vertical

16QAM

Mode:		LTE Traffic						
Band:		4	Channel:			19957		
Remark:		1.4MHz						
NO.	Freq. [MHz]	Height [cm]	Azimuth [deg]	Level [dBm]	Limit [dBm]	Margin [dB]	Result	Polarity
1	62.0164	150	108	-80.51	-13.00	67.51	Pass	Horizontal
2	106.6453	150	360	-80.54	-13.00	67.54	Pass	Horizontal
3	180.1860	150	152	-84.48	-13.00	71.48	Pass	Horizontal
4	285.5491	150	18	-82.00	-13.00	69.00	Pass	Horizontal
5	499.1858	150	64	-78.75	-13.00	65.75	Pass	Horizontal
6	875.0390	150	152	-73.34	-13.00	60.34	Pass	Horizontal
7	1506.0506	150	243	-48.96	-13.00	35.96	Pass	Horizontal
8	2737.1737	150	315	-45.45	-13.00	32.45	Pass	Horizontal
9	3421.4000	150	340	-49.43	-13.00	36.43	Pass	Horizontal
10	5132.7000	150	22	-50.09	-13.00	37.09	Pass	Horizontal
11	6842.8000	150	340	-50.39	-13.00	37.39	Pass	Horizontal
12	9121.0561	150	250	-45.15	-13.00	32.15	Pass	Horizontal

Mode:		LTE Traffic						
Band:		4	Channel:			19957		
Remark:		1.4MHz						
NO.	Freq. [MHz]	Height [cm]	Azimuth [deg]	Level [dBm]	Limit [dBm]	Margin [dB]	Result	Polarity
1	42.8066	150	358	-72.24	-13.00	59.24	Pass	Vertical
2	95.1970	150	319	-78.75	-13.00	65.75	Pass	Vertical
3	184.2609	150	358	-80.98	-13.00	67.98	Pass	Vertical
4	360.0600	150	158	-81.27	-13.00	68.27	Pass	Vertical
5	538.3817	150	158	-79.15	-13.00	66.15	Pass	Vertical
6	831.5743	150	222	-72.65	-13.00	59.65	Pass	Vertical
7	1142.6143	150	319	-51.18	-13.00	38.18	Pass	Vertical
8	2591.7592	150	243	-47.00	-13.00	34.00	Pass	Vertical
9	3421.4000	150	146	-49.43	-13.00	36.43	Pass	Vertical
10	5132.7000	150	83	-52.29	-13.00	39.29	Pass	Vertical
11	6842.8000	150	254	-52.95	-13.00	39.95	Pass	Vertical
12	10661.6331	150	18	-47.01	-13.00	34.01	Pass	Vertical

Mode:		LTE Traffic						
Band:		4	Channel:			20175		
Remark:		1.4MHz						
NO.	Freq. [MHz]	Height [cm]	Azimuth [deg]	Level [dBm]	Limit [dBm]	Margin [dB]	Result	Polarity
1	43.3887	150	283	-83.36	-13.00	70.36	Pass	Horizontal
2	87.8236	150	114	-83.00	-13.00	70.00	Pass	Horizontal
3	120.0340	150	127	-81.38	-13.00	68.38	Pass	Horizontal
4	233.5467	150	78	-85.35	-13.00	72.35	Pass	Horizontal
5	303.7888	150	283	-81.78	-13.00	68.78	Pass	Horizontal
6	535.2771	150	147	-79.17	-13.00	66.17	Pass	Horizontal
7	1158.2158	150	266	-50.13	-13.00	37.13	Pass	Horizontal
8	2401.3401	150	36	-46.34	-13.00	33.34	Pass	Horizontal
9	3465.0000	150	232	-48.25	-13.00	35.25	Pass	Horizontal
10	5197.5000	150	89	-50.61	-13.00	37.61	Pass	Horizontal
11	6930.0000	150	149	-47.56	-13.00	34.56	Pass	Horizontal
12	10286.6143	150	149	-45.86	-13.00	32.86	Pass	Horizontal

Mode:		LTE Traffic						
Band:		4	Channel:			20175		
Remark:		1.4MHz						
NO.	Freq. [MHz]	Height [cm]	Azimuth [deg]	Level [dBm]	Limit [dBm]	Margin [dB]	Result	Polarity
1	43.9708	150	342	-70.71	-13.00	57.71	Pass	Vertical
2	71.9124	150	89	-77.13	-13.00	64.13	Pass	Vertical
3	169.9020	150	312	-81.38	-13.00	68.38	Pass	Vertical
4	400.0320	150	4	-78.56	-13.00	65.56	Pass	Vertical
5	554.4869	150	312	-77.26	-13.00	64.26	Pass	Vertical
6	841.4703	150	179	-71.07	-13.00	58.07	Pass	Vertical
7	1208.8209	150	142	-48.53	-13.00	35.53	Pass	Vertical
8	2722.5723	150	153	-44.70	-13.00	31.70	Pass	Vertical
9	3465.0000	150	168	-48.51	-13.00	35.51	Pass	Vertical
10	5197.5000	150	75	-49.25	-13.00	36.25	Pass	Vertical
11	6930.0000	150	190	-47.49	-13.00	34.49	Pass	Vertical
12	10807.8904	150	338	-45.45	-13.00	32.45	Pass	Vertical

Mode:		LTE Traffic						
Band:		4	Channel:				20393	
Remark:		1.4MHz						
NO.	Freq. [MHz]	Height [cm]	Azimuth [deg]	Level [dBm]	Limit [dBm]	Margin [dB]	Result	Polarity
1	47.6575	150	34	-80.55	-13.00	67.55	Pass	Horizontal
2	119.6459	150	20	-79.83	-13.00	66.83	Pass	Horizontal
3	250.0400	150	105	-83.16	-13.00	70.16	Pass	Horizontal
4	348.9998	150	174	-79.48	-13.00	66.48	Pass	Horizontal
5	480.7522	150	330	-78.31	-13.00	65.31	Pass	Horizontal
6	759.1978	150	5	-73.48	-13.00	60.48	Pass	Horizontal
7	1046.8047	150	0	-49.36	-13.00	36.36	Pass	Horizontal
8	2578.3578	150	343	-45.15	-13.00	32.15	Pass	Horizontal
9	3508.6000	150	341	-45.74	-13.00	32.74	Pass	Horizontal
10	5262.9000	150	133	-47.38	-13.00	34.38	Pass	Horizontal
11	7017.2000	150	112	-45.41	-13.00	32.41	Pass	Horizontal
12	11151.4076	150	112	-41.91	-13.00	28.91	Pass	Horizontal

Mode:		LTE Traffic						
Band:		4	Channel:				20393	
Remark:		1.4MHz						
NO.	Freq. [MHz]	Height [cm]	Azimuth [deg]	Level [dBm]	Limit [dBm]	Margin [dB]	Result	Polarity
1	45.1350	150	206	-71.82	-13.00	58.82	Pass	Vertical
2	89.9580	150	346	-78.60	-13.00	65.60	Pass	Vertical
3	232.9646	150	219	-83.72	-13.00	70.72	Pass	Vertical
4	368.7918	150	332	-80.50	-13.00	67.50	Pass	Vertical
5	555.6511	150	319	-78.21	-13.00	65.21	Pass	Vertical
6	827.1114	150	206	-70.99	-13.00	57.99	Pass	Vertical
7	1520.2520	150	358	-50.25	-13.00	37.25	Pass	Vertical
8	2529.9530	150	303	-46.09	-13.00	33.09	Pass	Vertical
9	3508.6000	150	298	-46.67	-13.00	33.67	Pass	Vertical
10	5262.9000	150	20	-49.08	-13.00	36.08	Pass	Vertical
11	7017.2000	150	180	-47.37	-13.00	34.37	Pass	Vertical
12	10725.3863	150	360	-43.93	-13.00	30.93	Pass	Vertical

Mode:		LTE Traffic						
Band:		4	Channel:			19965		
Remark:		3MHz						
NO.	Freq. [MHz]	Height [cm]	Azimuth [deg]	Level [dBm]	Limit [dBm]	Margin [dB]	Result	Polarity
1	56.5833	150	4	-80.74	-13.00	67.74	Pass	Horizontal
2	106.4513	150	342	-79.98	-13.00	66.98	Pass	Horizontal
3	250.0400	150	194	-82.61	-13.00	69.61	Pass	Horizontal
4	321.4463	150	360	-81.07	-13.00	68.07	Pass	Horizontal
5	545.7552	150	177	-78.12	-13.00	65.12	Pass	Horizontal
6	872.9046	150	29	-72.70	-13.00	59.70	Pass	Horizontal
7	1162.4162	150	360	-49.89	-13.00	36.89	Pass	Horizontal
8	3423.0000	150	102	-47.49	-13.00	34.49	Pass	Horizontal
9	5134.5000	150	164	-49.90	-13.00	36.90	Pass	Horizontal
10	6846.0000	150	19	-49.37	-13.00	36.37	Pass	Horizontal
11	8135.5068	150	102	-44.96	-13.00	31.96	Pass	Horizontal
12	12982.2491	150	195	-48.22	-13.00	35.22	Pass	Horizontal

Mode:		LTE Traffic						
Band:		4	Channel:			19965		
Remark:		3MHz						
NO.	Freq. [MHz]	Height [cm]	Azimuth [deg]	Level [dBm]	Limit [dBm]	Margin [dB]	Result	Polarity
1	47.0754	150	270	-73.70	-13.00	60.70	Pass	Vertical
2	93.8388	150	316	-79.14	-13.00	66.14	Pass	Vertical
3	179.9920	150	59	-82.07	-13.00	69.07	Pass	Vertical
4	347.6415	150	189	-80.74	-13.00	67.74	Pass	Vertical
5	465.6171	150	250	-78.79	-13.00	65.79	Pass	Vertical
6	827.6935	150	112	-72.46	-13.00	59.46	Pass	Vertical
7	1453.0453	150	112	-49.56	-13.00	36.56	Pass	Vertical
8	2706.5707	150	44	-46.15	-13.00	33.15	Pass	Vertical
9	3423.0000	150	336	-50.15	-13.00	37.15	Pass	Vertical
10	5134.5000	150	101	-50.01	-13.00	37.01	Pass	Vertical
11	6846.0000	150	137	-49.49	-13.00	36.49	Pass	Vertical
12	10224.3612	150	286	-46.07	-13.00	33.07	Pass	Vertical

Mode:		LTE Traffic						
Band:		4	Channel:			20175		
Remark:		3MHz						
NO.	Freq. [MHz]	Height [cm]	Azimuth [deg]	Level [dBm]	Limit [dBm]	Margin [dB]	Result	Polarity
1	52.3145	150	217	-80.18	-13.00	67.18	Pass	Horizontal
2	97.7195	150	360	-80.86	-13.00	67.86	Pass	Horizontal
3	160.0060	150	52	-84.47	-13.00	71.47	Pass	Horizontal
4	284.9670	150	360	-81.33	-13.00	68.33	Pass	Horizontal
5	469.6919	150	360	-78.20	-13.00	65.20	Pass	Horizontal
6	600.0860	150	360	-74.75	-13.00	61.75	Pass	Horizontal
7	1177.4177	150	217	-48.75	-13.00	35.75	Pass	Horizontal
8	2628.9629	150	122	-45.77	-13.00	32.77	Pass	Horizontal
9	3465.0000	150	17	-48.12	-13.00	35.12	Pass	Horizontal
10	5197.5000	150	169	-50.32	-13.00	37.32	Pass	Horizontal
11	6930.0000	150	295	-47.23	-13.00	34.23	Pass	Horizontal
12	8135.5068	150	356	-43.86	-13.00	30.86	Pass	Horizontal

Mode:		LTE Traffic						
Band:		4	Channel:			20175		
Remark:		3MHz						
NO.	Freq. [MHz]	Height [cm]	Azimuth [deg]	Level [dBm]	Limit [dBm]	Margin [dB]	Result	Polarity
1	43.0006	150	67	-73.04	-13.00	60.04	Pass	Vertical
2	71.9124	150	236	-78.74	-13.00	65.74	Pass	Vertical
3	190.0820	150	348	-81.83	-13.00	68.83	Pass	Vertical
4	344.1488	150	348	-81.16	-13.00	68.16	Pass	Vertical
5	519.9480	150	27	-79.46	-13.00	66.46	Pass	Vertical
6	824.7830	150	67	-73.46	-13.00	60.46	Pass	Vertical
7	1463.2463	150	38	-50.35	-13.00	37.35	Pass	Vertical
8	2408.9409	150	223	-47.06	-13.00	34.06	Pass	Vertical
9	3465.0000	150	251	-50.18	-13.00	37.18	Pass	Vertical
10	5197.5000	150	17	-50.73	-13.00	37.73	Pass	Vertical
11	6930.0000	150	138	-51.09	-13.00	38.09	Pass	Vertical
12	10539.3770	150	138	-47.16	-13.00	34.16	Pass	Vertical

Mode:		LTE Traffic						
Band:		4	Channel:				20385	
Remark:		3MHz						
NO.	Freq. [MHz]	Height [cm]	Azimuth [deg]	Level [dBm]	Limit [dBm]	Margin [dB]	Result	Polarity
1	74.6289	150	220	-84.83	-13.00	71.83	Pass	Horizontal
2	173.2006	150	80	-85.89	-13.00	72.89	Pass	Horizontal
3	234.5169	150	151	-85.04	-13.00	72.04	Pass	Horizontal
4	327.6555	150	346	-80.86	-13.00	67.86	Pass	Horizontal
5	544.9790	150	93	-78.88	-13.00	65.88	Pass	Horizontal
6	800.5281	150	262	-75.05	-13.00	62.05	Pass	Horizontal
7	1144.6145	150	136	-49.81	-13.00	36.81	Pass	Horizontal
8	2598.7599	150	304	-46.34	-13.00	33.34	Pass	Horizontal
9	3507.0000	150	359	-47.20	-13.00	34.20	Pass	Horizontal
10	5260.5000	150	204	-49.70	-13.00	36.70	Pass	Horizontal
11	7014.0000	150	180	-47.23	-13.00	34.23	Pass	Horizontal
12	10394.6197	150	318	-44.01	-13.00	31.01	Pass	Horizontal

Mode:		LTE Traffic						
Band:		4	Channel:				20385	
Remark:		3MHz						
NO.	Freq. [MHz]	Height [cm]	Azimuth [deg]	Level [dBm]	Limit [dBm]	Margin [dB]	Result	Polarity
1	43.9708	150	319	-70.85	-13.00	57.85	Pass	Vertical
2	91.1222	150	262	-78.15	-13.00	65.15	Pass	Vertical
3	270.0260	150	319	-78.26	-13.00	65.26	Pass	Vertical
4	344.1488	150	52	-79.46	-13.00	66.46	Pass	Vertical
5	480.3641	150	277	-78.41	-13.00	65.41	Pass	Vertical
6	827.6935	150	136	-70.62	-13.00	57.62	Pass	Vertical
7	1156.4156	150	262	-49.39	-13.00	36.39	Pass	Vertical
8	2370.3370	150	207	-44.90	-13.00	31.90	Pass	Vertical
9	3507.0000	150	359	-49.16	-13.00	36.16	Pass	Vertical
10	5260.5000	150	271	-48.96	-13.00	35.96	Pass	Vertical
11	7014.0000	150	250	-45.79	-13.00	32.79	Pass	Vertical
12	9163.8082	150	271	-42.22	-13.00	29.22	Pass	Vertical

Mode:		LTE Traffic						
Band:		4	Channel:			19975		
Remark:		5MHz						
NO.	Freq. [MHz]	Height [cm]	Azimuth [deg]	Level [dBm]	Limit [dBm]	Margin [dB]	Result	Polarity
1	56.5833	150	162	-81.00	-13.00	68.00	Pass	Horizontal
2	90.5401	150	212	-80.75	-13.00	67.75	Pass	Horizontal
3	168.5437	150	339	-84.66	-13.00	71.66	Pass	Horizontal
4	303.9828	150	3	-81.14	-13.00	68.14	Pass	Horizontal
5	519.9480	150	273	-78.07	-13.00	65.07	Pass	Horizontal
6	855.2470	150	33	-74.05	-13.00	61.05	Pass	Horizontal
7	1209.2209	150	18	-49.19	-13.00	36.19	Pass	Horizontal
8	2703.5704	150	257	-45.27	-13.00	32.27	Pass	Horizontal
9	3425.0000	150	0	-48.99	-13.00	35.99	Pass	Horizontal
10	5137.5000	150	335	-51.16	-13.00	38.16	Pass	Horizontal
11	6850.0000	150	269	-48.78	-13.00	35.78	Pass	Horizontal
12	10534.1267	150	0	-45.74	-13.00	32.74	Pass	Horizontal

Mode:		LTE Traffic						
Band:		4	Channel:			19975		
Remark:		5MHz						
NO.	Freq. [MHz]	Height [cm]	Azimuth [deg]	Level [dBm]	Limit [dBm]	Margin [dB]	Result	Polarity
1	41.8364	150	3	-74.73	-13.00	61.73	Pass	Vertical
2	76.1812	150	270	-79.83	-13.00	66.83	Pass	Vertical
3	182.5145	150	84	-82.29	-13.00	69.29	Pass	Vertical
4	359.8660	150	3	-81.42	-13.00	68.42	Pass	Vertical
5	557.2034	150	179	-78.65	-13.00	65.65	Pass	Vertical
6	828.8578	150	330	-72.73	-13.00	59.73	Pass	Vertical
7	1256.4256	150	151	-49.96	-13.00	36.96	Pass	Vertical
8	2726.3726	150	330	-46.54	-13.00	33.54	Pass	Vertical
9	3425.0000	150	341	-48.54	-13.00	35.54	Pass	Vertical
10	5137.5000	150	103	-49.72	-13.00	36.72	Pass	Vertical
11	6850.0000	150	291	-52.12	-13.00	39.12	Pass	Vertical
12	10762.8881	150	0	-46.99	-13.00	33.99	Pass	Vertical

Mode:		LTE Traffic						
Band:		4	Channel:			20175		
Remark:		5MHz						
NO.	Freq. [MHz]	Height [cm]	Azimuth [deg]	Level [dBm]	Limit [dBm]	Margin [dB]	Result	Polarity
1	43.5827	150	162	-84.52	-13.00	71.52	Pass	Horizontal
2	90.3461	150	272	-82.47	-13.00	69.47	Pass	Horizontal
3	270.8022	150	40	-82.86	-13.00	69.86	Pass	Horizontal
4	412.2565	150	14	-80.71	-13.00	67.71	Pass	Horizontal
5	522.0824	150	14	-80.06	-13.00	67.06	Pass	Horizontal
6	953.8188	150	150	-72.81	-13.00	59.81	Pass	Horizontal
7	1464.6465	150	272	-51.16	-13.00	38.16	Pass	Horizontal
8	2894.7895	150	73	-47.15	-13.00	34.15	Pass	Horizontal
9	3465.0000	150	287	-51.01	-13.00	38.01	Pass	Horizontal
10	5197.5000	150	162	-52.09	-13.00	39.09	Pass	Horizontal
11	6930.0000	150	162	-50.84	-13.00	37.84	Pass	Horizontal
12	10518.3759	150	162	-47.66	-13.00	34.66	Pass	Horizontal

Mode:		LTE Traffic						
Band:		4	Channel:			20175		
Remark:		5MHz						
NO.	Freq. [MHz]	Height [cm]	Azimuth [deg]	Level [dBm]	Limit [dBm]	Margin [dB]	Result	Polarity
1	42.8066	150	224	-71.57	-13.00	58.57	Pass	Vertical
2	77.7335	150	338	-79.49	-13.00	66.49	Pass	Vertical
3	181.1562	150	168	-82.03	-13.00	69.03	Pass	Vertical
4	338.9098	150	110	-80.95	-13.00	67.95	Pass	Vertical
5	462.1244	150	224	-79.04	-13.00	66.04	Pass	Vertical
6	833.3207	150	338	-71.92	-13.00	58.92	Pass	Vertical
7	1448.4448	150	321	-50.02	-13.00	37.02	Pass	Vertical
8	2539.3539	150	206	-46.59	-13.00	33.59	Pass	Vertical
9	3465.0000	150	253	-49.16	-13.00	36.16	Pass	Vertical
10	5197.5000	150	206	-51.68	-13.00	38.68	Pass	Vertical
11	6930.0000	150	50	-49.18	-13.00	36.18	Pass	Vertical
12	11164.1582	150	357	-47.51	-13.00	34.51	Pass	Vertical

Mode:		LTE Traffic						
Band:		4		Channel:		20375		
Remark:		5MHz						
NO.	Freq. [MHz]	Height [cm]	Azimuth [deg]	Level [dBm]	Limit [dBm]	Margin [dB]	Result	Polarity
1	44.1648	150	1	-82.79	-13.00	69.79	Pass	Horizontal
2	69.1958	150	109	-83.12	-13.00	70.12	Pass	Horizontal
3	147.3935	150	333	-84.53	-13.00	71.53	Pass	Horizontal
4	180.1860	150	178	-85.55	-13.00	72.55	Pass	Horizontal
5	372.2845	150	249	-80.39	-13.00	67.39	Pass	Horizontal
6	850.0080	150	347	-74.89	-13.00	61.89	Pass	Horizontal
7	1074.4074	150	165	-50.91	-13.00	37.91	Pass	Horizontal
8	2332.3332	150	277	-46.45	-13.00	33.45	Pass	Horizontal
9	3505.0000	150	180	-45.88	-13.00	32.88	Pass	Horizontal
10	5257.5000	150	20	-49.13	-13.00	36.13	Pass	Horizontal
11	7010.0000	150	227	-47.48	-13.00	34.48	Pass	Horizontal
12	11251.9126	150	42	-43.20	-13.00	30.20	Pass	Horizontal

Mode:		LTE Traffic						
Band:		4		Channel:		20375		
Remark:		5MHz						
NO.	Freq. [MHz]	Height [cm]	Azimuth [deg]	Level [dBm]	Limit [dBm]	Margin [dB]	Result	Polarity
1	38.5377	150	65	-76.97	-13.00	63.97	Pass	Vertical
2	77.5395	150	191	-78.36	-13.00	65.36	Pass	Vertical
3	172.4245	150	80	-81.55	-13.00	68.55	Pass	Vertical
4	360.0600	150	0	-79.52	-13.00	66.52	Pass	Vertical
5	561.6663	150	22	-77.08	-13.00	64.08	Pass	Vertical
6	882.0244	150	51	-70.05	-13.00	57.05	Pass	Vertical
7	1076.6077	150	122	-50.37	-13.00	37.37	Pass	Vertical
8	2598.9599	150	333	-45.43	-13.00	32.43	Pass	Vertical
9	3505.0000	150	66	-47.48	-13.00	34.48	Pass	Vertical
10	5257.5000	150	272	-50.38	-13.00	37.38	Pass	Vertical
11	7010.0000	150	42	-46.59	-13.00	33.59	Pass	Vertical
12	10225.8613	150	272	-42.25	-13.00	29.25	Pass	Vertical

Mode:		LTE Traffic						
Band:		4	Channel:			20000		
Remark:		10MHz						
NO.	Freq. [MHz]	Height [cm]	Azimuth [deg]	Level [dBm]	Limit [dBm]	Margin [dB]	Result	Polarity
1	53.2847	150	271	-80.66	-13.00	67.66	Pass	Horizontal
2	71.9124	150	360	-84.02	-13.00	71.02	Pass	Horizontal
3	117.5115	150	342	-81.43	-13.00	68.43	Pass	Horizontal
4	258.5777	150	360	-83.01	-13.00	70.01	Pass	Horizontal
5	576.9954	150	342	-77.72	-13.00	64.72	Pass	Horizontal
6	875.0390	150	244	-73.78	-13.00	60.78	Pass	Horizontal
7	1244.0244	150	304	-48.46	-13.00	35.46	Pass	Horizontal
8	2395.5396	150	157	-45.91	-13.00	32.91	Pass	Horizontal
9	3430.0000	150	212	-48.27	-13.00	35.27	Pass	Horizontal
10	5145.0000	150	141	-49.91	-13.00	36.91	Pass	Horizontal
11	6860.0000	150	0	-50.61	-13.00	37.61	Pass	Horizontal
12	10366.1183	150	98	-45.45	-13.00	32.45	Pass	Horizontal

Mode:		LTE Traffic						
Band:		4	Channel:			20000		
Remark:		10MHz						
NO.	Freq. [MHz]	Height [cm]	Azimuth [deg]	Level [dBm]	Limit [dBm]	Margin [dB]	Result	Polarity
1	48.8218	150	307	-69.05	-13.00	56.05	Pass	Vertical
2	120.0340	150	278	-82.50	-13.00	69.50	Pass	Vertical
3	250.0400	150	342	-82.46	-13.00	69.46	Pass	Vertical
4	349.1938	150	29	-80.84	-13.00	67.84	Pass	Vertical
5	519.9480	150	357	-79.31	-13.00	66.31	Pass	Vertical
6	839.9180	150	72	-72.86	-13.00	59.86	Pass	Vertical
7	1223.0223	150	157	-49.52	-13.00	36.52	Pass	Vertical
8	2286.3286	150	307	-47.42	-13.00	34.42	Pass	Vertical
9	3430.0000	150	114	-50.12	-13.00	37.12	Pass	Vertical
10	5145.0000	150	310	-49.60	-13.00	36.60	Pass	Vertical
11	6860.0000	150	114	-48.88	-13.00	35.88	Pass	Vertical
12	9759.3380	150	23	-45.64	-13.00	32.64	Pass	Vertical

Mode:		LTE Traffic						
Band:		4	Channel:				20175	
Remark:		10MHz						
NO.	Freq. [MHz]	Height [cm]	Azimuth [deg]	Level [dBm]	Limit [dBm]	Margin [dB]	Result	Polarity
1	71.9124	150	302	-85.48	-13.00	72.48	Pass	Horizontal
2	124.4969	150	188	-82.88	-13.00	69.88	Pass	Horizontal
3	182.1264	150	245	-85.52	-13.00	72.52	Pass	Horizontal
4	327.0734	150	145	-82.19	-13.00	69.19	Pass	Horizontal
5	566.7113	150	319	-79.92	-13.00	66.92	Pass	Horizontal
6	965.0730	150	13	-72.65	-13.00	59.65	Pass	Horizontal
7	1540.8541	150	345	-51.23	-13.00	38.23	Pass	Horizontal
8	2399.9400	150	262	-47.24	-13.00	34.24	Pass	Horizontal
9	3465.0000	150	239	-50.77	-13.00	37.77	Pass	Horizontal
10	5197.5000	150	283	-51.63	-13.00	38.63	Pass	Horizontal
11	6930.0000	150	167	-50.10	-13.00	37.10	Pass	Horizontal
12	10390.8695	150	304	-47.23	-13.00	34.23	Pass	Horizontal

Mode:		LTE Traffic						
Band:		4	Channel:				20175	
Remark:		10MHz						
NO.	Freq. [MHz]	Height [cm]	Azimuth [deg]	Level [dBm]	Limit [dBm]	Margin [dB]	Result	Polarity
1	55.4191	150	218	-73.27	-13.00	60.27	Pass	Vertical
2	108.1976	150	330	-81.68	-13.00	68.68	Pass	Vertical
3	190.0820	150	99	-81.36	-13.00	68.36	Pass	Vertical
4	405.4651	150	230	-82.23	-13.00	69.23	Pass	Vertical
5	587.2795	150	159	-78.28	-13.00	65.28	Pass	Vertical
6	831.9624	150	302	-72.90	-13.00	59.90	Pass	Vertical
7	1144.4144	150	159	-51.65	-13.00	38.65	Pass	Vertical
8	2706.5707	150	99	-47.85	-13.00	34.85	Pass	Vertical
9	3465.0000	150	78	-50.84	-13.00	37.84	Pass	Vertical
10	5197.5000	150	229	-52.05	-13.00	39.05	Pass	Vertical
11	6930.0000	150	137	-49.72	-13.00	36.72	Pass	Vertical
12	11005.9003	150	118	-49.30	-13.00	36.30	Pass	Vertical

Mode:		LTE Traffic						
Band:		4	Channel:				20350	
Remark:		10MHz						
NO.	Freq. [MHz]	Height [cm]	Azimuth [deg]	Level [dBm]	Limit [dBm]	Margin [dB]	Result	Polarity
1	45.1350	150	188	-84.35	-13.00	71.35	Pass	Horizontal
2	120.6161	150	253	-82.31	-13.00	69.31	Pass	Horizontal
3	257.6075	150	79	-85.28	-13.00	72.28	Pass	Horizontal
4	383.9268	150	109	-81.55	-13.00	68.55	Pass	Horizontal
5	515.4851	150	301	-80.56	-13.00	67.56	Pass	Horizontal
6	874.6509	150	66	-74.36	-13.00	61.36	Pass	Horizontal
7	1551.6552	150	202	-50.92	-13.00	37.92	Pass	Horizontal
8	2676.3676	150	288	-47.01	-13.00	34.01	Pass	Horizontal
9	3500.0000	150	42	-48.56	-13.00	35.56	Pass	Horizontal
10	5250.0000	150	218	-50.31	-13.00	37.31	Pass	Horizontal
11	7000.0000	150	21	-49.12	-13.00	36.12	Pass	Horizontal
12	10417.8709	150	68	-43.62	-13.00	30.62	Pass	Horizontal

Mode:		LTE Traffic						
Band:		4	Channel:				20350	
Remark:		10MHz						
NO.	Freq. [MHz]	Height [cm]	Azimuth [deg]	Level [dBm]	Limit [dBm]	Margin [dB]	Result	Polarity
1	62.5985	150	318	-75.07	-13.00	62.07	Pass	Vertical
2	160.0060	150	24	-81.06	-13.00	68.06	Pass	Vertical
3	250.0400	150	103	-81.89	-13.00	68.89	Pass	Vertical
4	345.3131	150	331	-79.74	-13.00	66.74	Pass	Vertical
5	514.1268	150	38	-78.33	-13.00	65.33	Pass	Vertical
6	845.7391	150	346	-70.66	-13.00	57.66	Pass	Vertical
7	1412.4412	150	177	-48.73	-13.00	35.73	Pass	Vertical
8	3180.0090	150	90	-45.30	-13.00	32.30	Pass	Vertical
9	3500.0000	150	360	-46.59	-13.00	33.59	Pass	Vertical
10	5250.0000	150	21	-48.40	-13.00	35.40	Pass	Vertical
11	7000.0000	150	301	-46.20	-13.00	33.20	Pass	Vertical
12	10403.6202	150	360	-42.43	-13.00	29.43	Pass	Vertical

Mode:		LTE Traffic						
Band:		4	Channel:			20025		
Remark:		15MHz						
NO.	Freq. [MHz]	Height [cm]	Azimuth [deg]	Level [dBm]	Limit [dBm]	Margin [dB]	Result	Polarity
1	47.6575	150	196	-81.75	-13.00	68.75	Pass	Horizontal
2	66.8674	150	43	-82.73	-13.00	69.73	Pass	Horizontal
3	114.0188	150	297	-80.96	-13.00	67.96	Pass	Horizontal
4	264.0108	150	170	-81.93	-13.00	68.93	Pass	Horizontal
5	537.7996	150	182	-78.17	-13.00	65.17	Pass	Horizontal
6	799.9460	150	43	-74.58	-13.00	61.58	Pass	Horizontal
7	1462.8463	150	229	-48.77	-13.00	35.77	Pass	Horizontal
8	3201.0101	150	208	-46.32	-13.00	33.32	Pass	Horizontal
9	3435.0000	150	30	-47.04	-13.00	34.04	Pass	Horizontal
10	5152.5000	150	146	-50.18	-13.00	37.18	Pass	Horizontal
11	6870.0000	150	61	-50.57	-13.00	37.57	Pass	Horizontal
12	10807.1404	150	9	-46.13	-13.00	33.13	Pass	Horizontal

Mode:		LTE Traffic						
Band:		4	Channel:			20025		
Remark:		15MHz						
NO.	Freq. [MHz]	Height [cm]	Azimuth [deg]	Level [dBm]	Limit [dBm]	Margin [dB]	Result	Polarity
1	42.6125	150	8	-72.43	-13.00	59.43	Pass	Vertical
2	77.5395	150	37	-79.27	-13.00	66.27	Pass	Vertical
3	115.7652	150	49	-82.92	-13.00	69.92	Pass	Vertical
4	375.0010	150	305	-81.36	-13.00	68.36	Pass	Vertical
5	670.1340	150	360	-73.97	-13.00	60.97	Pass	Vertical
6	825.9472	150	195	-72.11	-13.00	59.11	Pass	Vertical
7	1208.2208	150	195	-49.55	-13.00	36.55	Pass	Vertical
8	2545.1545	150	305	-46.77	-13.00	33.77	Pass	Vertical
9	3435.0000	150	208	-48.91	-13.00	35.91	Pass	Vertical
10	5152.5000	150	94	-51.61	-13.00	38.61	Pass	Vertical
11	6870.0000	150	0	-48.26	-13.00	35.26	Pass	Vertical
12	10675.8838	150	159	-47.03	-13.00	34.03	Pass	Vertical

Mode:		LTE Traffic						
Band:		4	Channel:			20175		
Remark:		15MHz						
NO.	Freq. [MHz]	Height [cm]	Azimuth [deg]	Level [dBm]	Limit [dBm]	Margin [dB]	Result	Polarity
1	56.0012	150	156	-80.71	-13.00	67.71	Pass	Horizontal
2	104.8990	150	266	-81.16	-13.00	68.16	Pass	Horizontal
3	233.5467	150	305	-84.20	-13.00	71.20	Pass	Horizontal
4	324.5509	150	178	-80.36	-13.00	67.36	Pass	Horizontal
5	515.6791	150	178	-78.75	-13.00	65.75	Pass	Horizontal
6	874.0688	150	360	-72.66	-13.00	59.66	Pass	Horizontal
7	1031.4031	150	352	-50.05	-13.00	37.05	Pass	Horizontal
8	2546.7547	150	360	-45.86	-13.00	32.86	Pass	Horizontal
9	3465.0000	150	117	-49.41	-13.00	36.41	Pass	Horizontal
10	5197.5000	150	0	-49.06	-13.00	36.06	Pass	Horizontal
11	6930.0000	150	194	-48.96	-13.00	35.96	Pass	Horizontal
12	10752.3876	150	358	-46.13	-13.00	33.13	Pass	Horizontal

Mode:		LTE Traffic						
Band:		4	Channel:			20175		
Remark:		15MHz						
NO.	Freq. [MHz]	Height [cm]	Azimuth [deg]	Level [dBm]	Limit [dBm]	Margin [dB]	Result	Polarity
1	46.8814	150	20	-72.40	-13.00	59.40	Pass	Vertical
2	92.6745	150	303	-79.51	-13.00	66.51	Pass	Vertical
3	176.8874	150	157	-81.70	-13.00	68.70	Pass	Vertical
4	479.9760	150	181	-78.16	-13.00	65.16	Pass	Vertical
5	678.2837	150	90	-73.80	-13.00	60.80	Pass	Vertical
6	821.0962	150	45	-71.30	-13.00	58.30	Pass	Vertical
7	1450.4450	150	357	-49.09	-13.00	36.09	Pass	Vertical
8	2773.3773	150	111	-45.32	-13.00	32.32	Pass	Vertical
9	3465.0000	150	100	-47.81	-13.00	34.81	Pass	Vertical
10	5197.5000	150	290	-49.08	-13.00	36.08	Pass	Vertical
11	6930.0000	150	0	-48.57	-13.00	35.57	Pass	Vertical
12	9702.3351	150	171	-44.90	-13.00	31.90	Pass	Vertical

Mode:		LTE Traffic						
Band:		4	Channel:				20325	
Remark:		15MHz						
NO.	Freq. [MHz]	Height [cm]	Azimuth [deg]	Level [dBm]	Limit [dBm]	Margin [dB]	Result	Polarity
1	57.7476	150	277	-81.59	-13.00	68.59	Pass	Horizontal
2	99.8540	150	108	-82.12	-13.00	69.12	Pass	Horizontal
3	172.4245	150	135	-86.47	-13.00	73.47	Pass	Horizontal
4	274.2949	150	206	-82.93	-13.00	69.93	Pass	Horizontal
5	526.1572	150	8	-79.87	-13.00	66.87	Pass	Horizontal
6	873.0986	150	50	-74.03	-13.00	61.03	Pass	Horizontal
7	1189.4189	150	319	-50.32	-13.00	37.32	Pass	Horizontal
8	2605.7606	150	37	-47.36	-13.00	34.36	Pass	Horizontal
9	3495.0000	150	134	-49.50	-13.00	36.50	Pass	Horizontal
10	5242.5000	150	359	-50.93	-13.00	37.93	Pass	Horizontal
11	6990.0000	150	134	-49.22	-13.00	36.22	Pass	Horizontal
12	12383.7192	150	113	-43.66	-13.00	30.66	Pass	Horizontal

Mode:		LTE Traffic						
Band:		4	Channel:				20325	
Remark:		15MHz						
NO.	Freq. [MHz]	Height [cm]	Azimuth [deg]	Level [dBm]	Limit [dBm]	Margin [dB]	Result	Polarity
1	44.5529	150	347	-73.42	-13.00	60.42	Pass	Vertical
2	77.7335	150	177	-77.08	-13.00	64.08	Pass	Vertical
3	169.9020	150	36	-79.56	-13.00	66.56	Pass	Vertical
4	519.9480	150	192	-78.47	-13.00	65.47	Pass	Vertical
5	653.0586	150	219	-75.99	-13.00	62.99	Pass	Vertical
6	831.9624	150	262	-70.44	-13.00	57.44	Pass	Vertical
7	1208.8209	150	358	-48.53	-13.00	35.53	Pass	Vertical
8	2474.3474	150	219	-45.49	-13.00	32.49	Pass	Vertical
9	3495.0000	150	300	-47.25	-13.00	34.25	Pass	Vertical
10	5242.5000	150	89	-48.29	-13.00	35.29	Pass	Vertical
11	6990.0000	150	322	-47.13	-13.00	34.13	Pass	Vertical
12	11192.6596	150	209	-42.30	-13.00	29.30	Pass	Vertical

Mode:		LTE Traffic						
Band:		4	Channel:				20050	
Remark:		20MHz						
NO.	Freq. [MHz]	Height [cm]	Azimuth [deg]	Level [dBm]	Limit [dBm]	Margin [dB]	Result	Polarity
1	56.3893	150	173	-80.98	-13.00	67.98	Pass	Horizontal
2	89.3759	150	337	-82.06	-13.00	69.06	Pass	Horizontal
3	274.4889	150	47	-82.03	-13.00	69.03	Pass	Horizontal
4	398.8678	150	349	-80.07	-13.00	67.07	Pass	Horizontal
5	586.1152	150	269	-78.04	-13.00	65.04	Pass	Horizontal
6	872.7105	150	47	-73.13	-13.00	60.13	Pass	Horizontal
7	1622.8623	150	148	-50.57	-13.00	37.57	Pass	Horizontal
8	2541.1541	150	269	-46.73	-13.00	33.73	Pass	Horizontal
9	3440.0000	150	181	-48.65	-13.00	35.65	Pass	Horizontal
10	5160.0000	150	23	-50.05	-13.00	37.05	Pass	Horizontal
11	6880.0000	150	136	-48.34	-13.00	35.34	Pass	Horizontal
12	10222.1111	150	323	-45.49	-13.00	32.49	Pass	Horizontal

Mode:		LTE Traffic						
Band:		4	Channel:				20050	
Remark:		20MHz						
NO.	Freq. [MHz]	Height [cm]	Azimuth [deg]	Level [dBm]	Limit [dBm]	Margin [dB]	Result	Polarity
1	71.9124	150	358	-76.89	-13.00	63.89	Pass	Vertical
2	117.7055	150	59	-82.38	-13.00	69.38	Pass	Vertical
3	170.0960	150	238	-81.51	-13.00	68.51	Pass	Vertical
4	373.8368	150	92	-80.75	-13.00	67.75	Pass	Vertical
5	534.1128	150	158	-78.16	-13.00	65.16	Pass	Vertical
6	829.0518	150	253	-71.99	-13.00	58.99	Pass	Vertical
7	1465.4465	150	308	-49.06	-13.00	36.06	Pass	Vertical
8	2401.7402	150	358	-46.22	-13.00	33.22	Pass	Vertical
9	3440.0000	150	175	-48.23	-13.00	35.23	Pass	Vertical
10	5160.0000	150	303	-49.84	-13.00	36.84	Pass	Vertical
11	6880.0000	150	198	-49.32	-13.00	36.32	Pass	Vertical
12	10284.3642	150	71	-46.12	-13.00	33.12	Pass	Vertical

Mode:		LTE Traffic						
Band:		4	Channel:			20175		
Remark:		20MHz						
NO.	Freq. [MHz]	Height [cm]	Azimuth [deg]	Level [dBm]	Limit [dBm]	Margin [dB]	Result	Polarity
1	55.8072	150	97	-80.60	-13.00	67.60	Pass	Horizontal
2	120.6161	150	97	-80.92	-13.00	67.92	Pass	Horizontal
3	250.0400	150	356	-82.56	-13.00	69.56	Pass	Horizontal
4	399.6439	150	275	-79.61	-13.00	66.61	Pass	Horizontal
5	490.2601	150	194	-78.23	-13.00	65.23	Pass	Horizontal
6	758.2276	150	360	-74.28	-13.00	61.28	Pass	Horizontal
7	1046.0046	150	72	-49.62	-13.00	36.62	Pass	Horizontal
8	2468.3468	150	248	-45.61	-13.00	32.61	Pass	Horizontal
9	3465.0000	150	180	-47.16	-13.00	34.16	Pass	Horizontal
10	5197.5000	150	324	-48.01	-13.00	35.01	Pass	Horizontal
11	6930.0000	150	63	-47.26	-13.00	34.26	Pass	Horizontal
12	10661.6331	150	180	-46.22	-13.00	33.22	Pass	Horizontal

Mode:		LTE Traffic						
Band:		4	Channel:			20175		
Remark:		20MHz						
NO.	Freq. [MHz]	Height [cm]	Azimuth [deg]	Level [dBm]	Limit [dBm]	Margin [dB]	Result	Polarity
1	44.5529	150	310	-73.69	-13.00	60.69	Pass	Vertical
2	91.3163	150	99	-80.44	-13.00	67.44	Pass	Vertical
3	178.2456	150	360	-81.09	-13.00	68.09	Pass	Vertical
4	309.9980	150	146	-80.14	-13.00	67.14	Pass	Vertical
5	500.1560	150	166	-78.89	-13.00	65.89	Pass	Vertical
6	958.4757	150	29	-69.29	-13.00	56.29	Pass	Vertical
7	1093.8094	150	99	-49.50	-13.00	36.50	Pass	Vertical
8	3465.0000	150	353	-49.14	-13.00	36.14	Pass	Vertical
9	4379.3190	150	30	-47.97	-13.00	34.97	Pass	Vertical
10	5197.5000	150	71	-48.68	-13.00	35.68	Pass	Vertical
11	6930.0000	150	113	-48.27	-13.00	35.27	Pass	Vertical
12	9699.3350	150	30	-43.04	-13.00	30.04	Pass	Vertical

Mode:		LTE Traffic						
Band:		4	Channel:				20300	
Remark:		20MHz						
NO.	Freq. [MHz]	Height [cm]	Azimuth [deg]	Level [dBm]	Limit [dBm]	Margin [dB]	Result	Polarity
1	43.9708	150	262	-83.32	-13.00	70.32	Pass	Horizontal
2	80.8382	150	219	-85.06	-13.00	72.06	Pass	Horizontal
3	156.7073	150	108	-85.84	-13.00	72.84	Pass	Horizontal
4	248.0996	150	358	-86.05	-13.00	73.05	Pass	Horizontal
5	519.9480	150	346	-79.94	-13.00	66.94	Pass	Horizontal
6	812.1704	150	248	-75.80	-13.00	62.80	Pass	Horizontal
7	1127.2127	150	290	-51.43	-13.00	38.43	Pass	Horizontal
8	2277.1277	150	192	-46.96	-13.00	33.96	Pass	Horizontal
9	3490.0000	150	252	-48.46	-13.00	35.46	Pass	Horizontal
10	5235.0000	150	88	-50.78	-13.00	37.78	Pass	Horizontal
11	6980.0000	150	359	-48.06	-13.00	35.06	Pass	Horizontal
12	10392.3696	150	344	-44.04	-13.00	31.04	Pass	Horizontal

Mode:		LTE Traffic						
Band:		4	Channel:				20300	
Remark:		20MHz						
NO.	Freq. [MHz]	Height [cm]	Azimuth [deg]	Level [dBm]	Limit [dBm]	Margin [dB]	Result	Polarity
1	64.3449	150	290	-74.92	-13.00	61.92	Pass	Vertical
2	117.5115	150	151	-81.06	-13.00	68.06	Pass	Vertical
3	250.0400	150	220	-81.79	-13.00	68.79	Pass	Vertical
4	360.0600	150	220	-79.42	-13.00	66.42	Pass	Vertical
5	519.9480	150	248	-77.43	-13.00	64.43	Pass	Vertical
6	863.2026	150	24	-70.61	-13.00	57.61	Pass	Vertical
7	1191.8192	150	51	-48.80	-13.00	35.80	Pass	Vertical
8	2721.5722	150	206	-44.87	-13.00	31.87	Pass	Vertical
9	3490.0000	150	251	-46.29	-13.00	33.29	Pass	Vertical
10	5235.0000	150	88	-47.50	-13.00	34.50	Pass	Vertical
11	6980.0000	150	360	-45.14	-13.00	32.14	Pass	Vertical
12	10441.1221	150	360	-42.88	-13.00	29.88	Pass	Vertical

Note:

Scan from 9kHz to 25GHz, the disturbance above 13GHz and below 30MHz was very low, and the above harmonics were the highest point could be found when testing, so only the above harmonics had been displayed. The amplitude of spurious emissions from the radiator which are attenuated more than 20dB below the limit need not be reported.

PHOTOGRAPHS OF TEST SETUP

Test model No.: A311-ZEV

Radiated spurious emission Test Setup-1(Below 1GHz)

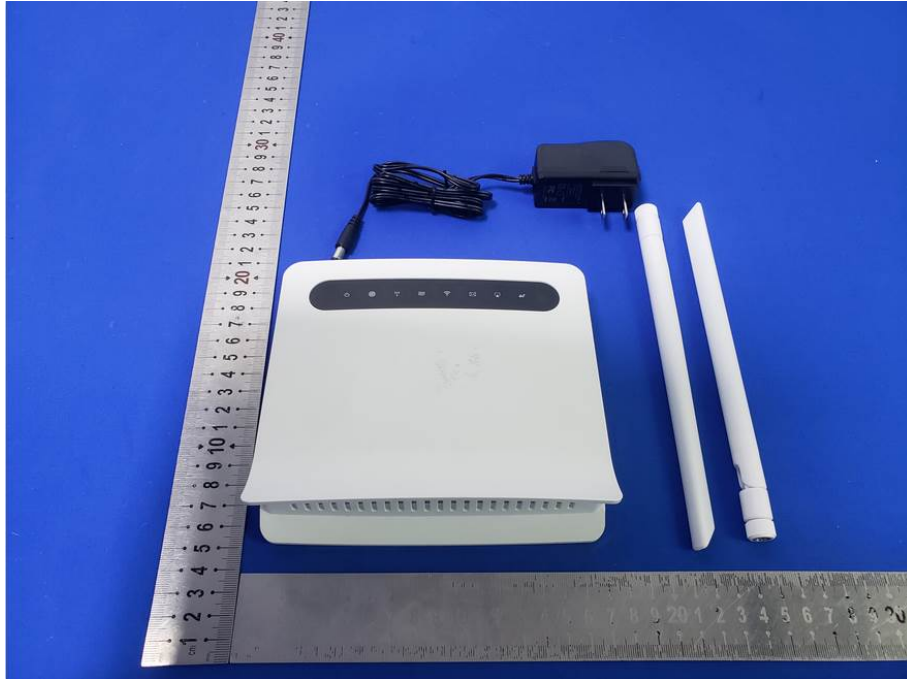


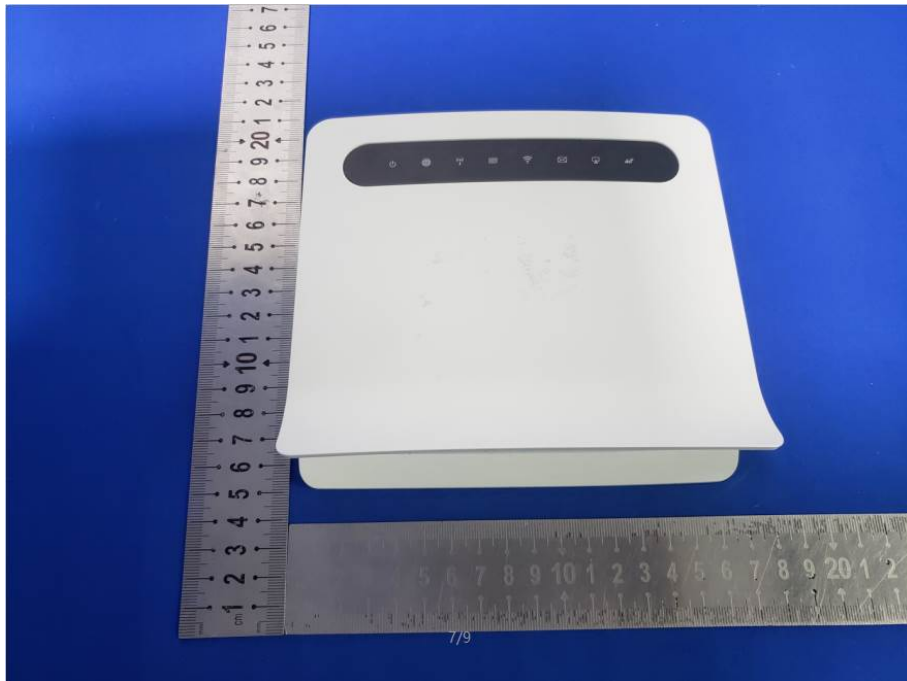
Radiated spurious emission Test Setup-2(Above 1GHz)



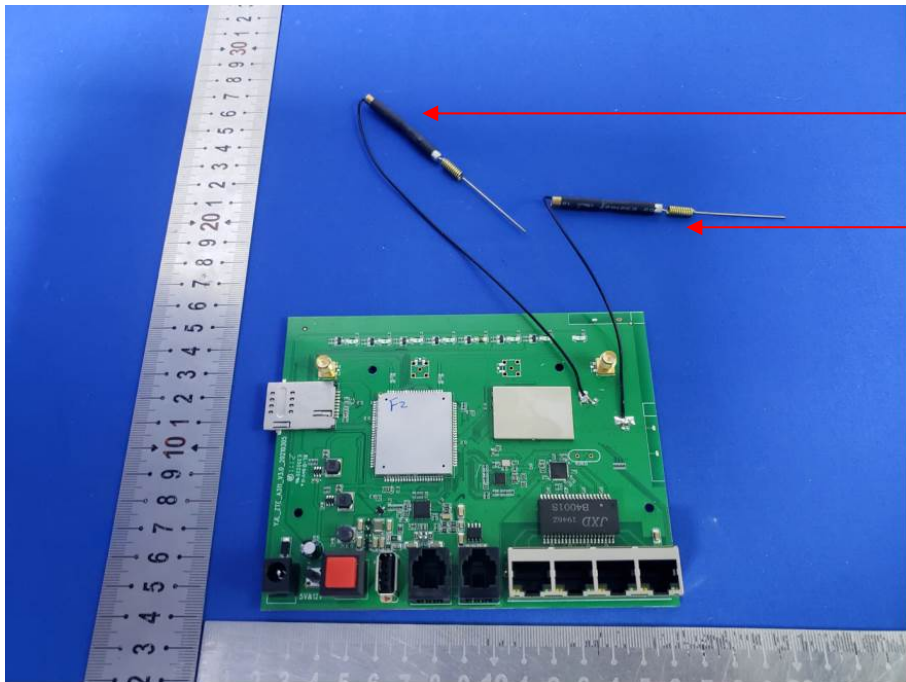
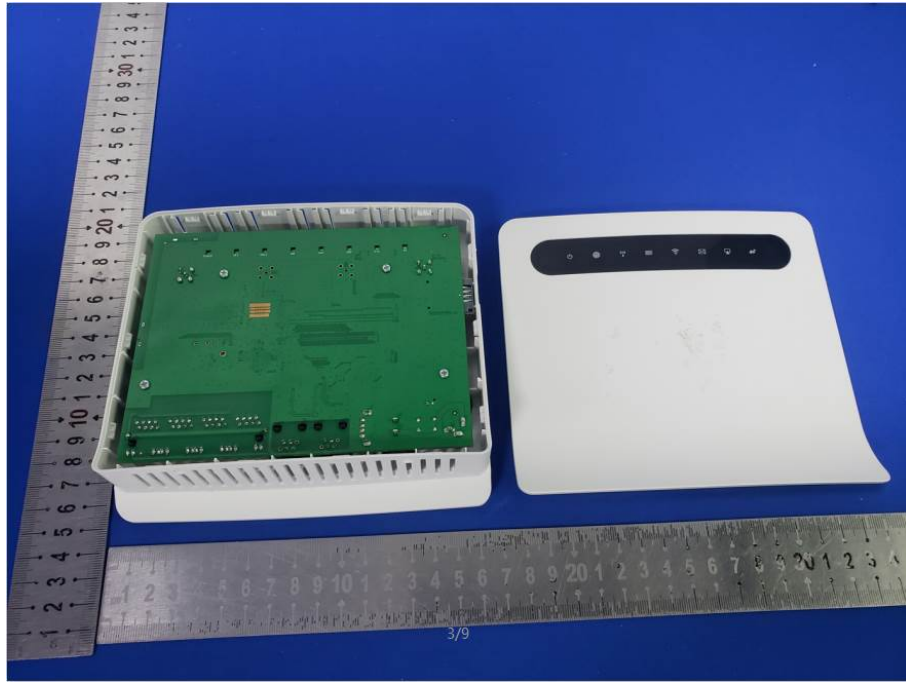
PHOTOGRAPHS OF EUT Constructional Details

Test Model No.: A311-ZEV









WIFI
Antenna A

WIFI
Antenna B



*** End of Report ***