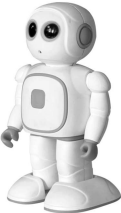


Instruction manual

Educational robot

R8- Climber

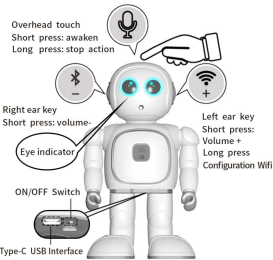
Hello everyone, I'm climber, an educational robot. Call my name "Alexa" to wake me up.



This manual introduces the basic use methods and common problems of educational robots, helps you quickly understand and familiarize yourself with robots, and guides you to use robots.

01

Buttons and instructions



02

• Button definition

Voice interaction

Wake word: "Alexa" The system prompts "When" and then voice commands, like "sing a song" or "tell a story."

Overhead touch key

In the conversation, Short press: Shop the conversation In the states, Short press: Wake up Robot, you can have a conversation, Long press: Close (Open dance moves. When the robot is dancing, long press the top of the robot to stop dancing, long press again, the robot will continue to dance.

Tagging: In group dance mode, long press the head Exit group Dance Mode. In group dance mode, the machine can't be awakened by voice and can't carry on a conversation. It takes ten or more robots to perform a group dance.

Directory key

If the track is playing, short press: switch directory (Tagging: when the robot is in standby mode, short press the directory key to continue to play the last played directory)

03

Configure network/Volume+Key

Long press (Left ear key): Enter configuration network mode (Configure network through app) Short press: Adjust the volume to increase

Volume+Key

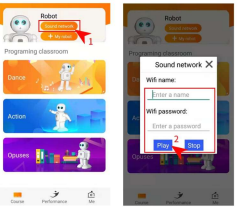
Short press: (Right ear key): Adjust the volume to decrease Hold down the right ear button for two seconds and release it to turn off the robot's eye light. Hold down the right ear button for another two seconds and release it to turn on the light

- Eye light function definition (Eye indicator)
 - Red light: Charging
 - Blue light: Fully charged
 - Pink light: Slow flashing means you are connected to the Internet and can dance
 - Cyan light: already connected to the network can not dance
 - Yellow light: no network connection
 - Green light: voice monitoring can not dance
 - Pink light: Long light represents group dance state
 - Peach, pink and yellow flickered alternately: Amazon Platform is not authorized (The eye light will be pink after the authorization is completed)

04

Network connections

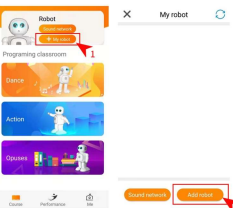
- Click on Sound Wave to configure the network
- Enter the WiFi name and password, click play (Mobile phones and robots need to use the same wireless network)
- Long press the robot's left ear button to connect to the network (Note: The robot voice prompts "I'm connected to Internet is great" Network connection successful)



05

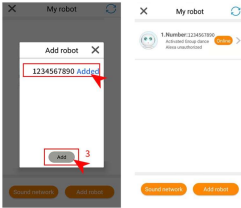
Equipment binding

- Open the app that controls the robot, click on my robot
- Click add robot



06

- Select the robot to be connected and click Add, Connect robot successfully.

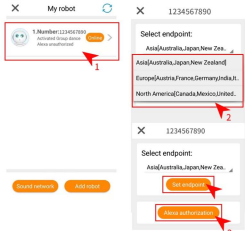


07

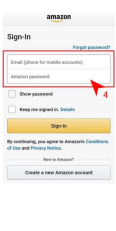
Authorization by Amazon

- Click on an unauthorized robot
- Choose your region, click set server endpoint
- Click authorize Alexa

- Log in to your Amazon account
- Long press the paste code, click to continue
- Click Alexa authorize

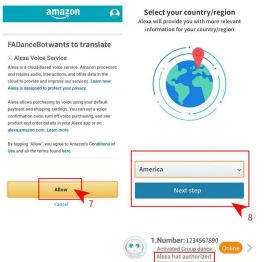


08



09

- Click allow
- Select your country/region, click Next and the authorization is successful (The eye light will be pink after the authorization is completed)



10

Common problem

Abnormal phenomenon	Analyze the reasons	Solution
Robot does not execute commands (No singing, no dancing, no response to conversation)	Check if the network is connected (No connection is shown as a yellow light) Whether the network signal is good	Connect Network Switch to a network with a stronger signal
No response after the robot is turned on	Check if the robot has power	Please charge

Note: If the above problems cannot be solved, please contact the manufacturer. Non-professionals are forbidden to disassemble by themselves

Matters needing attention

- Do not allow children or pets to swallow or bite robots or accessories to avoid harm
- If there is electromagnetic interference during operation, please change the site for operation
- Keep away from fire, do not store in hot and humid places;

11

- When the robot is running, please do not force the joints to move
- In the process of using, if the robot falls, please cut off power immediately
- Do not use the robot at the edge of the desktop to avoid falling

Basic parameters

Product name	Educational robot - The climber
Rated input	5.0V ~ 1.0A
Battery capacity	1600mAh
Storage capacity	8M Byte
Product material	ABS
Product Size	111X188X94mm
Product net weight	0.35kg

12

Instructions for safe use of batteries

- This product uses USB to charge. Built-in non-removable rechargeable polymer battery. Rated working conditions: DCSV, 1A, adult charging required
- This product uses non-replaceable batteries. Do not remove the battery forcibly
- This product charging should be operated by adults. Charging cords are not toys and should be kept away from children
- Do not open the product forcibly to avoid potential harm
- When the robot is fully charged, it can continue charging for about 30 minutes, and the robot will trickle charging to extend the battery life

13

Educational robot - The climber

Product warranty card

Warranty Treaty:
In order to enable you to enjoy high quality effects for many years to come, we make sure that there are no equipment defects when the equipment leaves the factory. With a 12-month warranty period from the date of purchase, the warranty products shall be guaranteed according to the following terms with the valid sales certificate and this warranty certificate when they are sent for repair.

- Your equipment must be used correctly according to the product manual
- This guarantee is not applicable to failures or damage caused by people, accidents (fire, external force extrusion, falling, etc.) or natural disasters (earthquake, typhoon, lightning, etc.)
- After the warranty card is lost, no reissue, please keep it with the sales voucher.

14

Educational robot - The climber

Product warranty card

Product name: _____
Model: _____
Purchase time: _____ Purchase time: _____
Contact number: _____
Detailed address: _____
Place of purchase: _____
Dealer name and address: _____

Please save this voucher, if your device needs warranty service, please contact your dealer's distributor.

15

This equipment has been tested and found to comply with the limits for a Class B digital device, pursuant to part 15 of the FCC Rules. These limits are designed to provide reasonable protection against harmful interference in a residential installation. This equipment generates, uses and can radiate radio frequency energy and, if not installed and used in accordance with the instructions, may cause harmful interference to radio communications. However, there is no guarantee that interference will not occur in a particular installation. If this equipment does cause harmful interference to radio or television reception, which can be determined by turning the equipment off and on, the user is encouraged to try to correct the interference by one or more of the following measures:

- Reorient or relocate the receiving antenna.
- Increase the separation between the equipment and receiver.
- Connect the equipment into an outlet on a circuit different from that to which the receiver is connected.
- Consult the dealer or an experienced radio/TV technician for help.

Caution: Any changes or modifications to this device not explicitly approved by manufacturer could void your authority to operate this equipment.

This device complies with part 15 of the FCC Rules. Operation is subject to the following two conditions: (1) This device may not cause harmful interference, and (2) this device must accept any interference received, including interference that may cause undesired operation.

The device has been evaluated to meet general RF exposure requirement. The device can be used in portable exposure condition without restriction.