

# Instruction Manual

Smart  
Touch Switch



## PRODUCT FEATURES

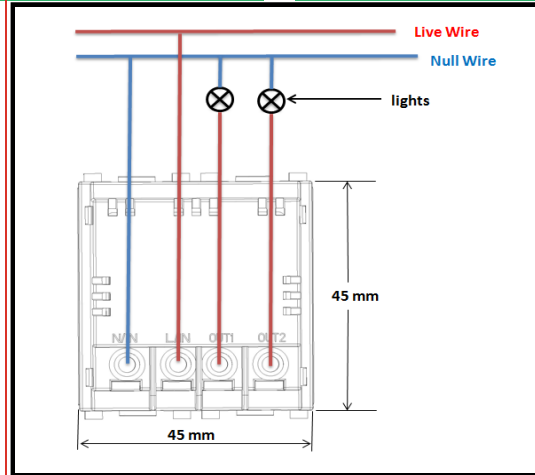
- Works with Amazon Alexa/Google Home, Commanded by your voice.
- Control your home with your smartphones app or tablets from anywhere at anytime.
- Timing switch to turn ON/OFF your lights and appliances automatically.
- Refined appearance and made of fire resistant material, Safe and Durable.
- Overload protection, easy to replace your traditional mechanical switch (Requires neutral wire).
- The Smart switch blends well with any room decor with its elegant, minimal design with sensitive capacitive touch control.
- Its LEDs can guide you at night when lights go off and you can simply turn it on. off by directly pressing.

## SPECIFICATIONS

Product Name : WiFi Smart Touch Switch  
Rated Current : 10A  
Rated Voltage : AC 100V-250V 50/60Hz  
Wireless Frequency : WiFi 2.4GHz

Wireless Standard : IEEE802.11 b/g/n  
App Support : IOS/Android ( Smart Life )

## INSTALLATION



- 1, Make sure electricity is cut off during the installation.
- 2, The switch must be installed without electricity, Electricity must be turned on after the installation (Cover the glass touch panel), Touch for test after 10 seconds, Or the switch will not work well.

## How to download APP?

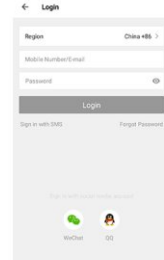
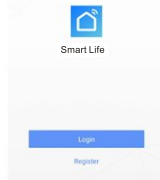
1.1 Scan the QR code below or search Smart Life in IOS App store or Google play.



## 1.2 Download & Registration

- Scan the QR code to download "Smart Life" Application.
- Enter the register/login interface, input the phone number for getting verification code to register or through other methods at the bottom of the page connecting to related authorization interface

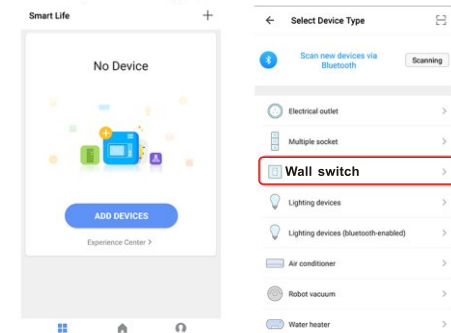
Switch and wifi router between distance must not exceed 10 meters, need ensure wifi signal strong enough.



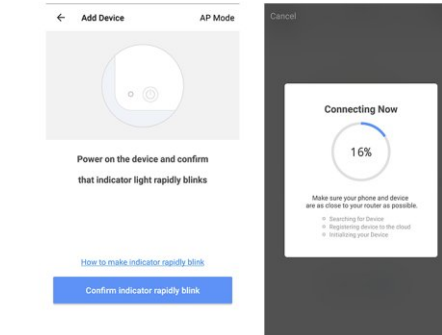
## 1.3 Easy Mode (Recommend)

Preparation : Device has connected with electricity, long press on/off button for 5 seconds until indicator light quickly flashes, the application already stepped into "My Device" interface

- Phone has connected to Wifi router and been able to connect to internet
- Tap the icon "+" on the top right corner of "My Device", choose your device type, enter into "Add Device".



- Make sure the indicator light is flashing quickly, then tap the related button in application.
- Choose the local Wifi and enter the correct password, tap "Next".
- Wait for configuring successfully, and click "Complete".
- Now you can control the smart switch through Smart Life App.
- Once the configuration is completed successfully, the indicator light will turn to solid blue and the device will be added to the "Device list".



Note: there is no internet connected while the blue light flashing slowly

## Warranty Card

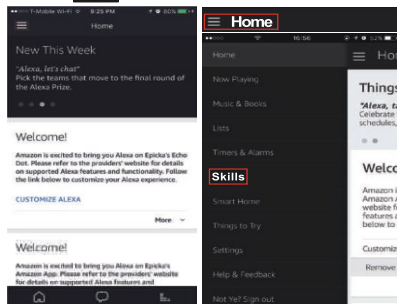
Dear Customers:  
Thanks for using our products, we promise to provide you following service.

1. Year free repair service provided if products doesn't working well. However, changing case is not free service. customer have to pay case cost.
2. If warranty time expired, customer pay the repair cost.
3. If products got problem, please take the warranty card and purchasing receipt to the pointed address to repair.

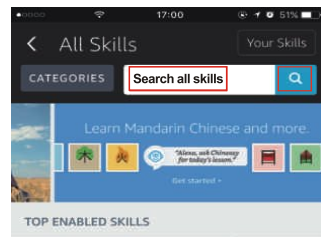
Product name: \_\_\_\_\_  
Production date: \_\_\_\_\_  
Purchase date: \_\_\_\_\_  
Contact information: \_\_\_\_\_  
Customer's address: \_\_\_\_\_  
After sales service tel: \_\_\_\_\_  
After sales address: \_\_\_\_\_

## How to connect your Smart Switch to Amazon Alexa

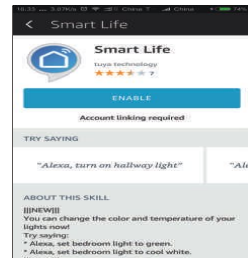
1. Launch Smart Life App, sign in your account and make sure your Smart Switch is in your device list.
2. Name each device, such as living room light or bedroom light, so that Alexa can easily recognize them.
3. Minimize Smart Life App, then launch the Alexa App and sign in your Alexa account and make sure you have at least one Alexa voice-controlled device installed like Echo, Echo dot, etc.
4. In the upper left corner of Home page, click the menu button, then click Skills in the menu.



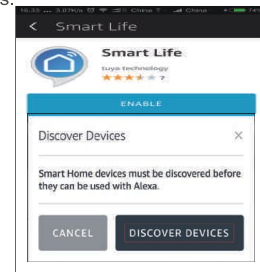
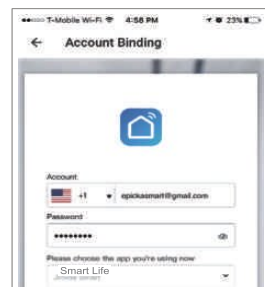
5. Type in "Smart Life" in the search and click the search button.



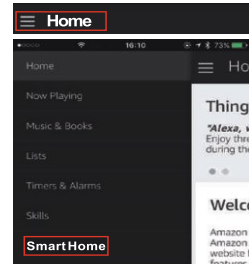
6. Enable Smart Life, then sign in your Smart Life account to complete the account linking.



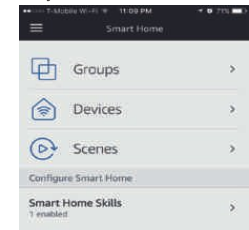
7. After successful account linking, ask Alexa to discover devices. After a 20-second device discovery, Alexa will show all the discovered devices.



8. Back to Menu by clicking the menu button, and then click Smart Home button.

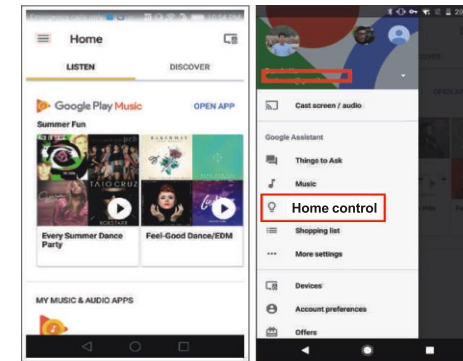


9. In Smart Home page, you can group your devices for different categories. Your Smart Life APP has been skilled with Alexa. Now you can control your Smart Switch via Alexa.

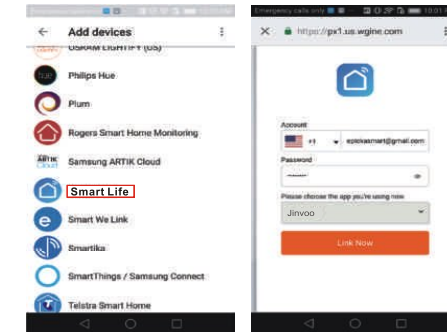


## How to connect you Smart Switch to Google Home

1. Launch the Google Home App and make sure Google Home speaker is installed. If not, please follow the Google Home Speaker installation to install it first.
2. Once Google Home is installed, in the upper left corner of App Home page, click the menu button to show App menu. Then click "Home Control" in the menu.



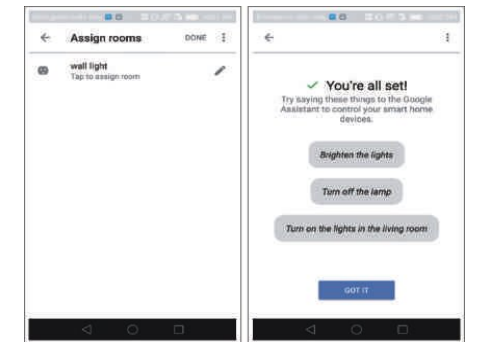
3. On "Add devices" page, scroll down to find "Smart Life" and then click it. Sign in Smart Life App with your Smart Life App account and password choose Smart Life App in the dropdown menu to complete the account linking.

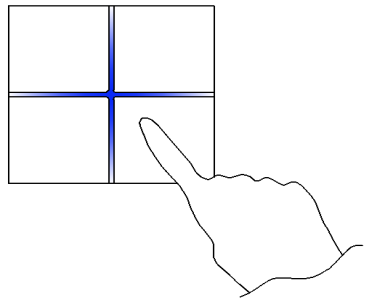


4. After successful account linking, in Google Home App you can see all the smart devices from your Smart Life App account. You can assign rooms for each device.

5. Now you can use Google Home to control your smart devices, you can say like:

Ok Google, turn on/off wall light  
Ok Google, set bedroom light to red





## Instruction Manual Smart Touch Switch



### PRODUCT FEATURES

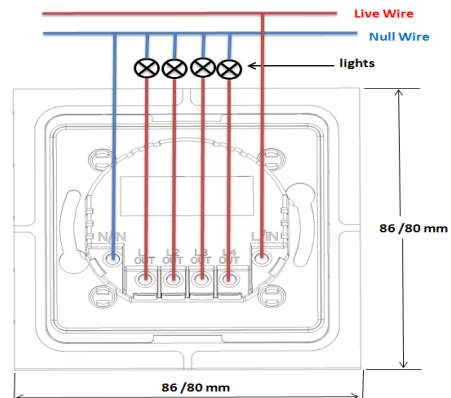
- Works with Amazon Alexa/Google Home, Commanded by your voice.
- Control your home with your smartphones app or tablets from anywhere at anytime.
- Timing switch to turn ON/OFF your lights and appliances automatically.
- Refined appearance and made of fire resistant material, Safe and Durable.
- Overload protection, easy to replace your traditional mechanical switch (Requires neutral wire).
- The Smart switch blends well with any room decor with its elegant, minimal design with sensitive capacitive touch control.
- Its LEDs can guide you at night when lights go off and you can simply turn it on. off by directly pressing.

### SPECIFICATIONS

Product Name : WiFi Smart Touch Switch  
Rated Current : 10A  
Rated Voltage : AC 100V-250V 50/60Hz  
Wireless Frequency : WiFi 2.4GHz

Wireless Standard : IEEE802.11 b/g/n  
App Support : IOS/Android ( Smart Life )

### INSTALLATION



This wiring diagram only for 4 gang switch,  
1-2-3gang switch output will reduced accordingly.

- 1, Make sure electricity is cut off during the installation.
- 2, The switch must be installed without electricity, Electricity must be turn on after the installation(Cover the glass touch panel), Touch for test after 10 seconds, Or the switch will not work well.

### How to download APP?

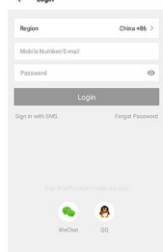
1.1 Scan the QR code below or search Smart Life in IOS App store or Google play.



### 1.2 Download & Registration

- Scan the QR code to download "Smart Life" Application.
- Enter the register/login interface, input the phone number for getting verification code to register or through other methods at the bottom of page connecting to related authorization interface

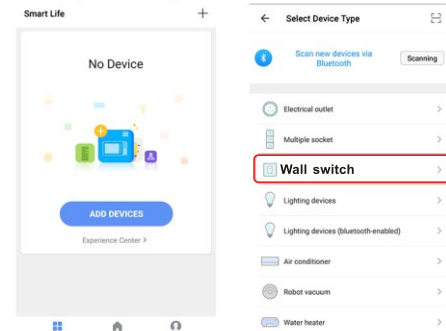
Switch and wifi router between  
distance must not exceed 10  
meters, need ensure wifi signal  
strong enough.



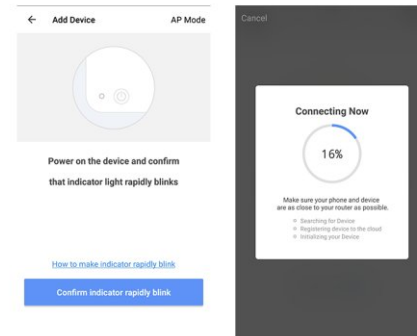
### 1.3 Easy Mode (Recommend)

Preparation : Device has connected with electricity, long press on/off button for 5 seconds until indicator light quickly flashes, the application already stepped into "My Device" interface

- Phone has connected to Wifi router and been able to connect to internet
- Tap the icon "+" on the top right corner of "My Device", choose your device type, enter into "Add Device".



- Make sure the indicator light is flashing quickly, then tap the related button in application.
- Choose the local Wifi and enter the correct password, tap "Next".
- Wait for configuring successfully, and click "Complete"
- Now you can control the smart switch through Smart Life App.
- Once the configuration is completed successfully, the indicator light will turn to solid blue and the device will be added to the "Device list"



Note: there is no internet connected while the blue light flashing slowly

### Warranty Card

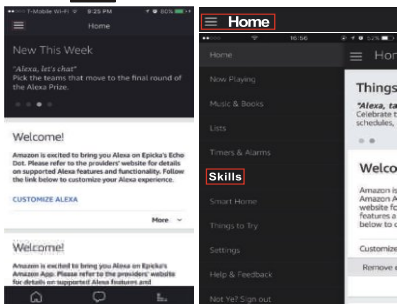
Dear Customers:  
Thanks for using our products, we promise to provide you following service.

1. Year free repair service provided if products doesn't working well. However, changing case is not free service. Customer have to pay case cost.
2. If warranty time expired, customer pay the repair cost.
3. If products got problem, please take the warranty card and purchasing receipt to the pointed address to repair.

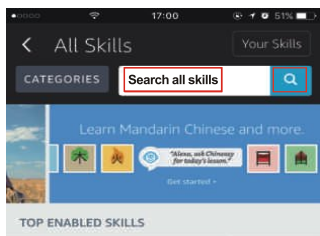
Product name: \_\_\_\_\_  
Production date: \_\_\_\_\_  
Purchase date: \_\_\_\_\_  
Contact information: \_\_\_\_\_  
Customer's address: \_\_\_\_\_  
After sales service tel: \_\_\_\_\_  
After sales address: \_\_\_\_\_

### How to connect your Smart Switch to Amazon Alexa

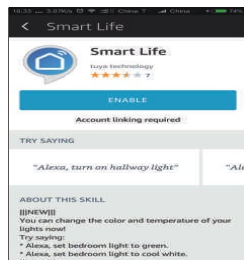
1. Launch **Smart Life** App, sign in your account and make sure your Smart Switch is in your device list.
2. Name each device, such as living room light or bedroom light, so that Alexa can easily recognize them.
3. Minimize **Smart Life** App, then launch the Alexa App and sign in your Alexa account and make sure you have at least one Alexa voice-controlled device installed like Echo, Echo dot, etc.
4. In the upper left corner of Home page, click **Skills** button to show App menu. Then clicks **Skills** in the menu.



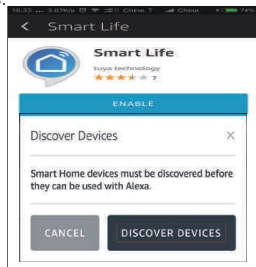
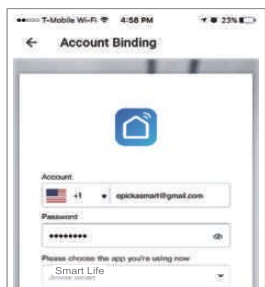
5. Type in "**Smart Life**" in the search and click the search button.



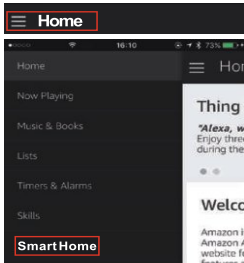
6. Enable Smart Life, then sign in your **Smart Life** account to complete the account linking.



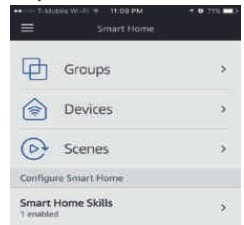
7. After successful account linking, ask Alexa to discover devices. After a 20-second device discovery, Alexa will show all the discovered devices.



8. Back to Menu by clicking **Home** button, and then click **Smart Home** button.

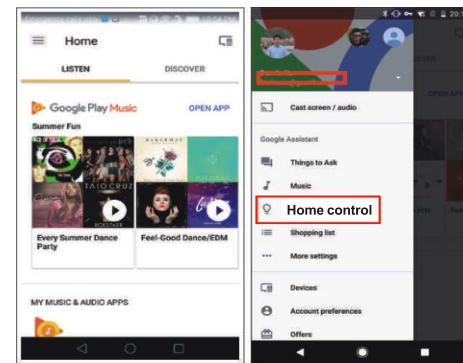


9. In Smart Home page, you can group your devices for different categories. Your **Smart Life** APP has been skilled with Alexa. Now you can control your Smart Switch via Alexa.

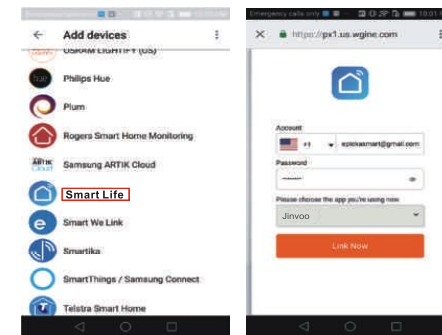


### How to connect you Smart Switch to Google Home

1. Launch the Google Home App and make sure Google Home speaker is installed. If not, please follow the Google Home Speaker installation to install it first.
2. Once Google Home is installed, in the upper left corner of App Home page, click **Home Control** button to show App menu. Then clicks "Home Control" in the menu.



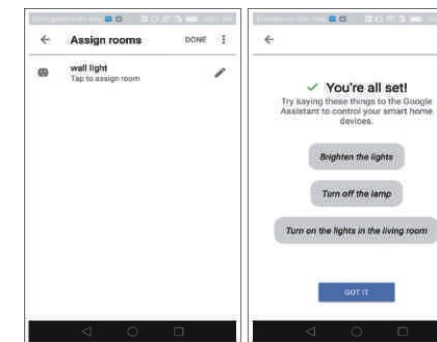
3. On "Add devices" page, scroll down to find "Smart Life" and then click it. Sign in Smart Life App with your Smart Life App account and password choose **Smart Life** App in the dropdown menu to complete the account linking.



4. After successful account linking, in Google Home App you can see all the smart devices from your **Smart Life** App account. You can assign rooms for each device.

5. Now you can use Google Home to control your smart devices, you can say like:

Ok Google, turn on/off wall light  
Ok Google, set bedroom light to red



**FCC Statement**

This equipment has been tested and found to comply with the limits for a Class B digital device, pursuant to part 15 of the FCC rules. These limits are designed to provide reasonable protection against harmful interference in a residential installation. This equipment generates, uses and can radiate radio frequency energy and, if not installed and used in accordance with the instructions, may cause harmful interference to radio communications. However, there is no guarantee that interference will not occur in a particular installation. If this equipment does cause harmful interference to radio or television reception, which can be determined by turning the equipment off and on, the user is encouraged to try to correct the interference by one or more of the following measures:

- Reorient or relocate the receiving antenna.
- Increase the separation between the equipment and receiver.
- Connect the equipment into an outlet on a circuit different from that to which the receiver is connected.
- Consult the dealer or an experienced radio/TV technician for help.

To assure continued compliance, any changes or modifications not expressly approved by the party.

Responsible for compliance could void the user's authority to operate this equipment. (Example- use only shielded interface cables when connecting to computer or peripheral devices).

This equipment complies with Part 15 of the FCC Rules. Operation is subject to the following two conditions:

- (1) This device may not cause harmful interference, and
- (2) This device must accept any interference received, including interference that may cause undesired operation.

**FCC Radiation Exposure Statement:**

The equipment complies with FCC Radiation exposure limits set forth for uncontrolled environment. This equipment should be installed and operated with minimum distance 20cm between the radiator and your body.

.