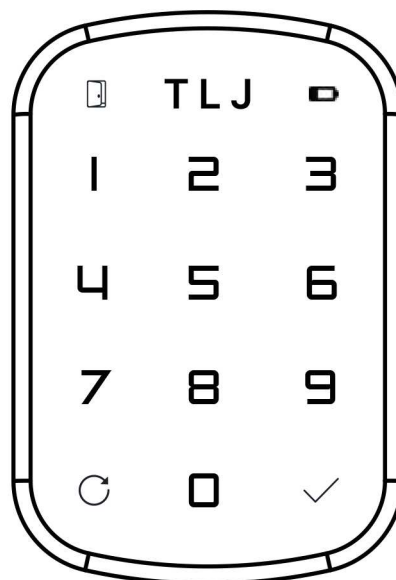
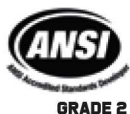


ADB1-0 SMART DEADBOLT LOCK

ADB1-0 Fully Loaded Deadbolt
Motorized
Touchscreen keypad
PIN, RFID, Z-Wave™ and BLE

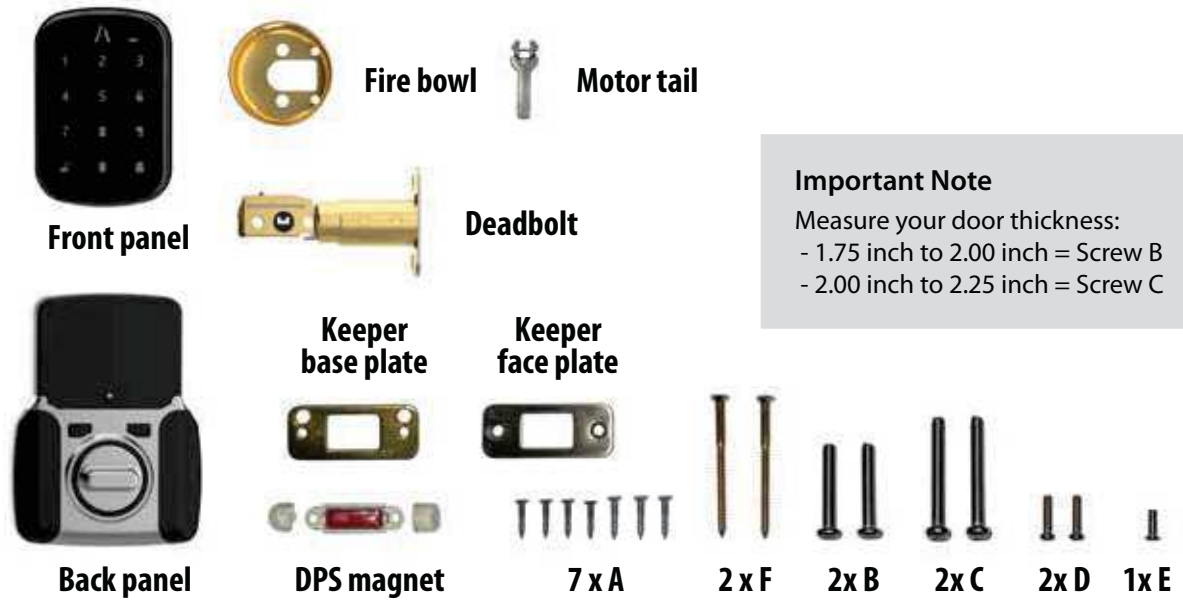


Contents

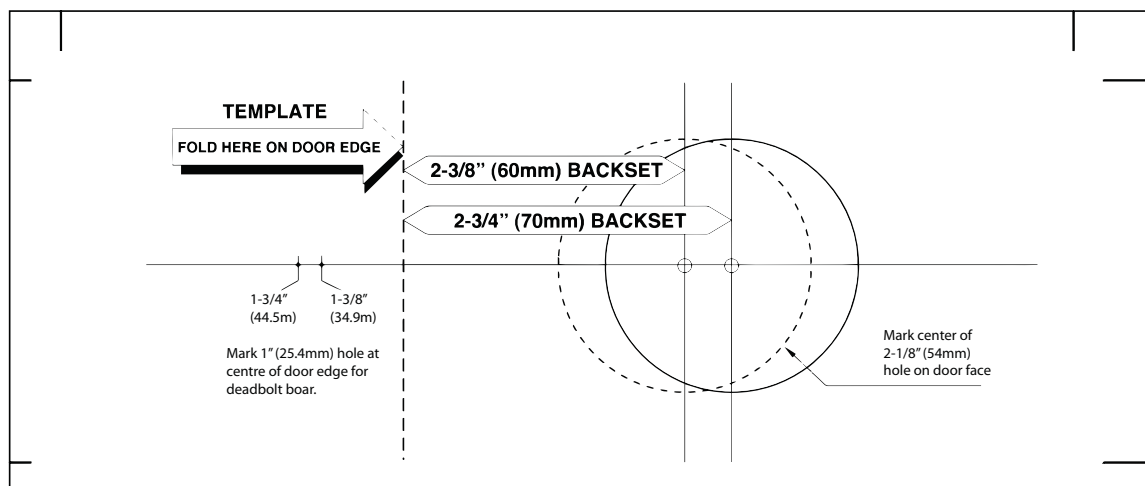
Box Contents.....	3
Installation.....	4 - 10
Guidance Symbols.....	11
Initial Setup.....	12
Pairing Zpas to Door Lock.....	6
Operating Mode - Z-Wave™.....	10
Operating Mode - DIY.....	11
Factory Rest.....	15
Users List.....	16
Troubleshooting.....	17



Box Contents

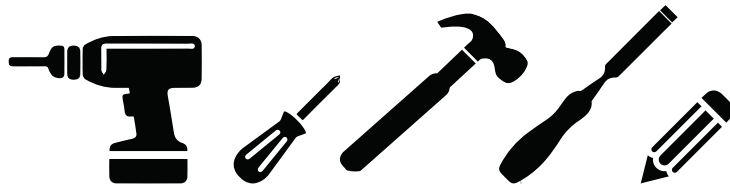


Door Cutting/Milling Template

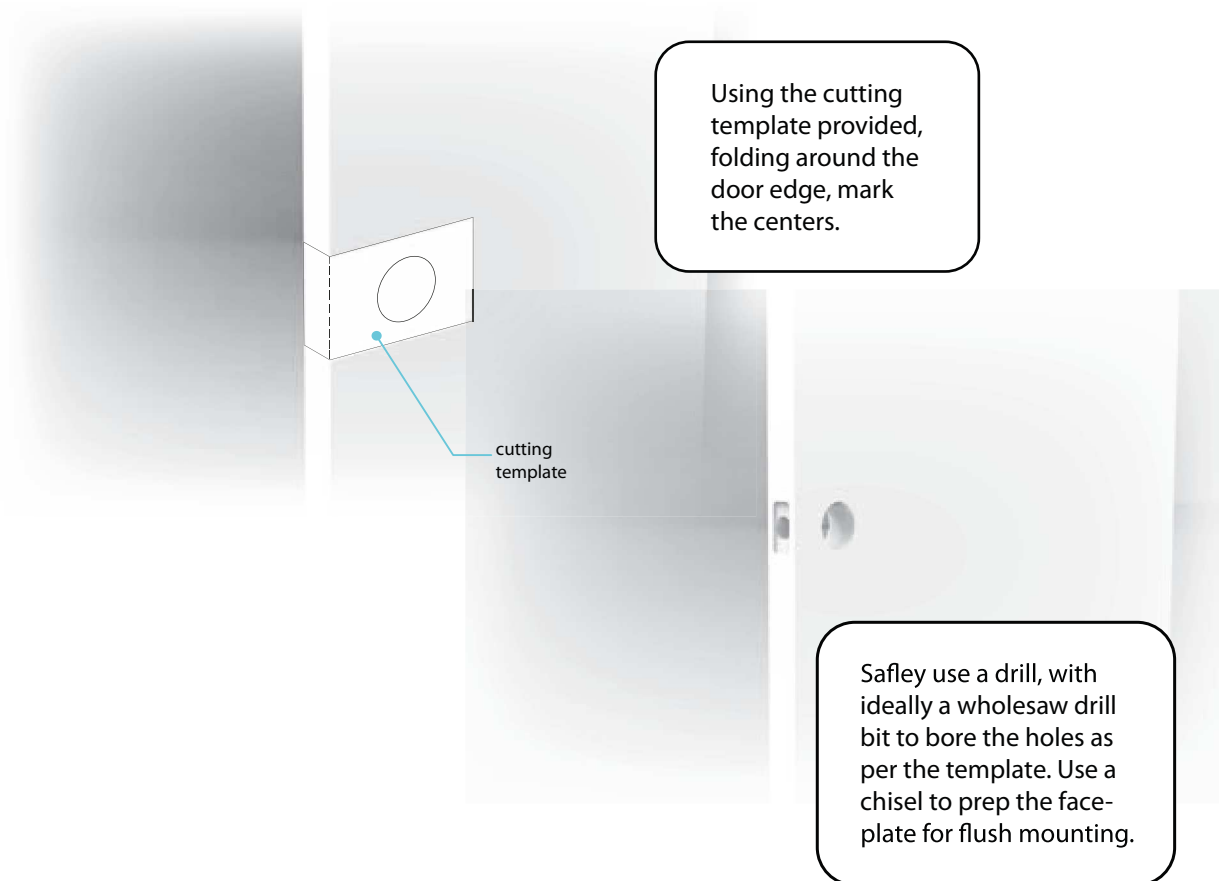


Installation

Tools Required



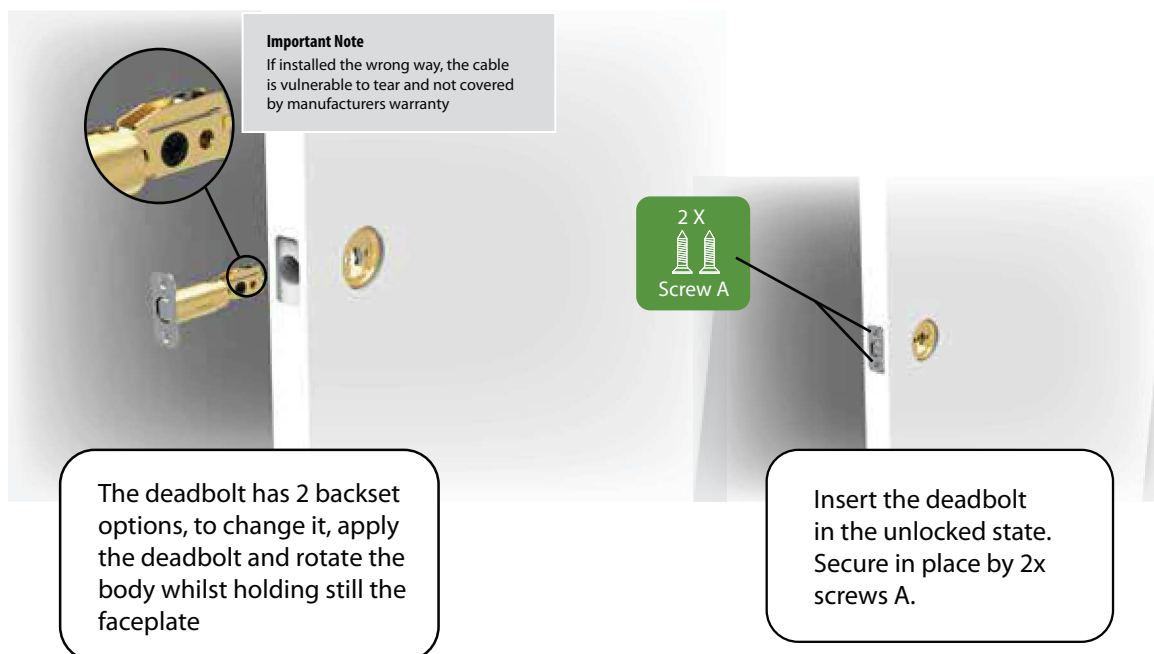
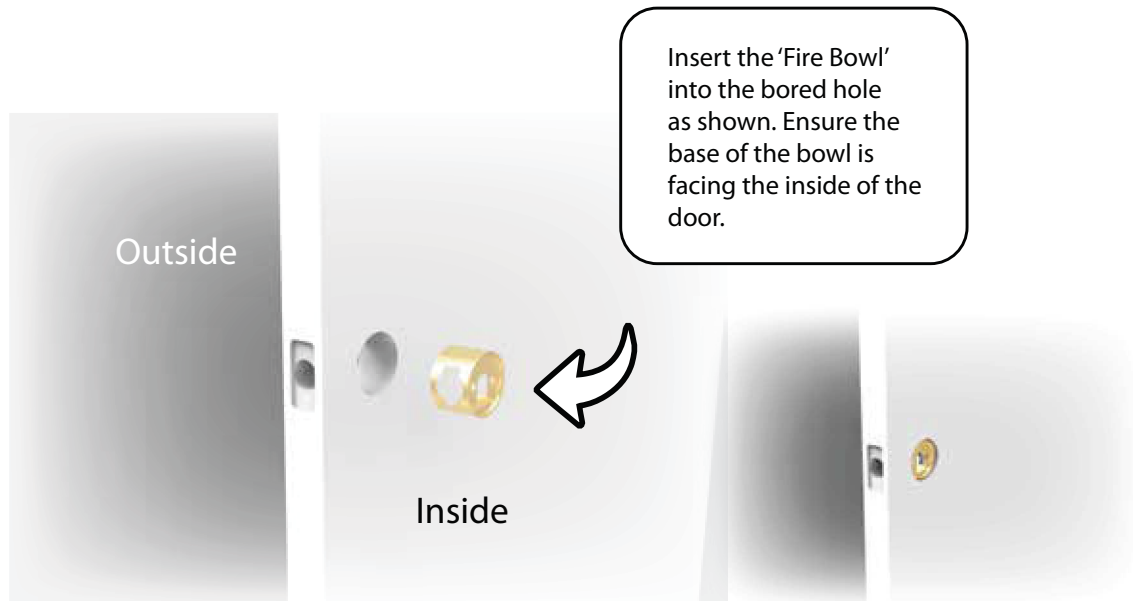
Door preparation



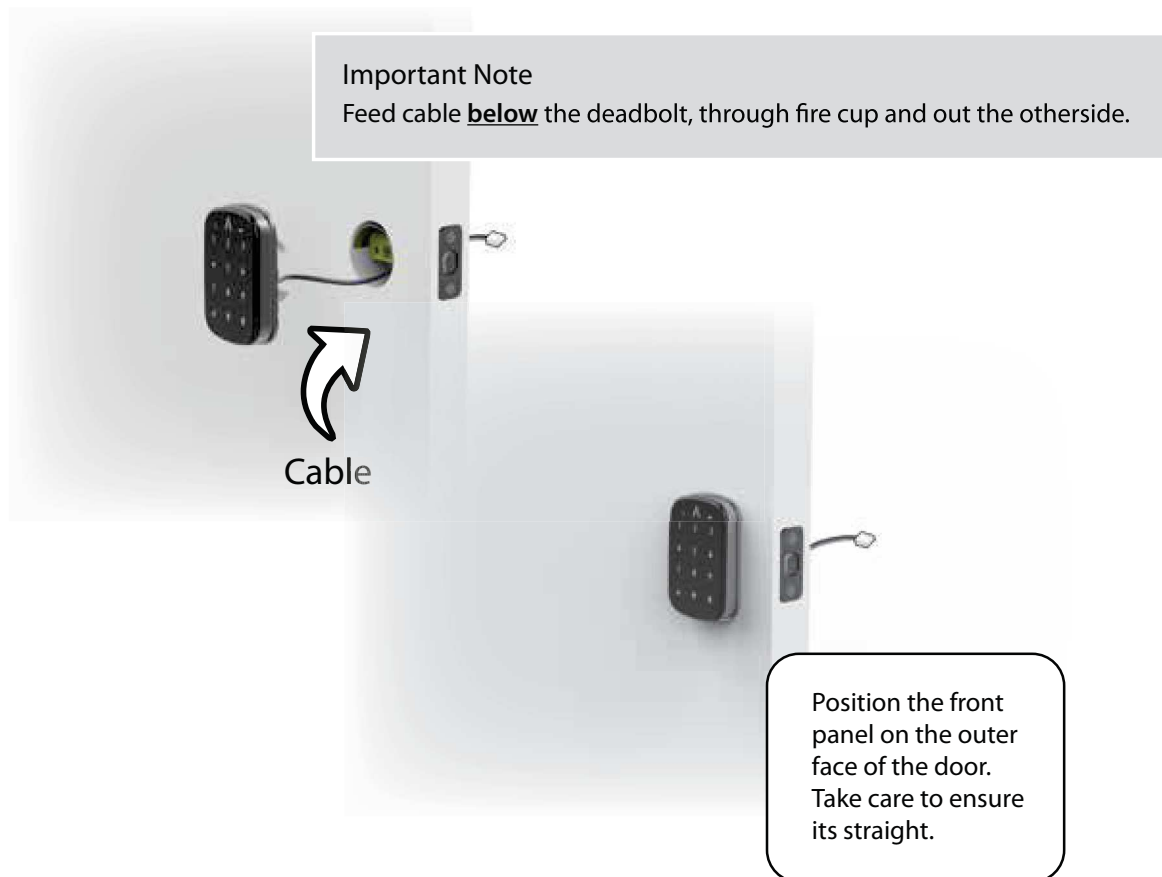
Important Note

The door preparation is critical to the fire integrity of the full door set, so ensure to follow the template provided. Additionally, lock performance can be effected when door preparation is not accurate.

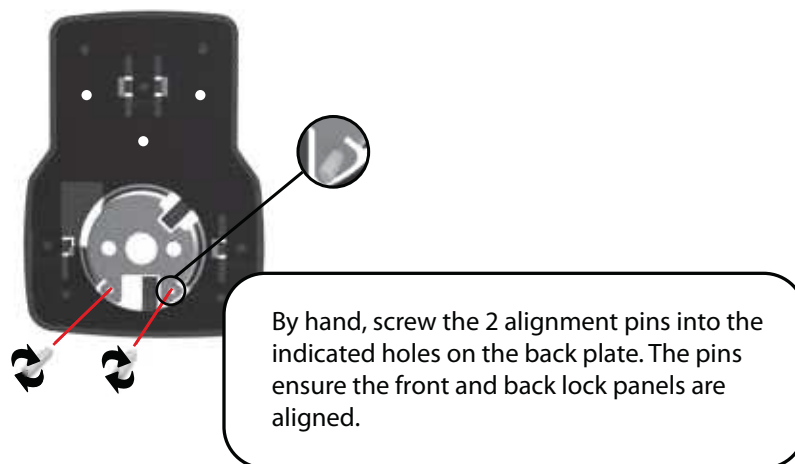
Affixing fire bowl & deadbolt

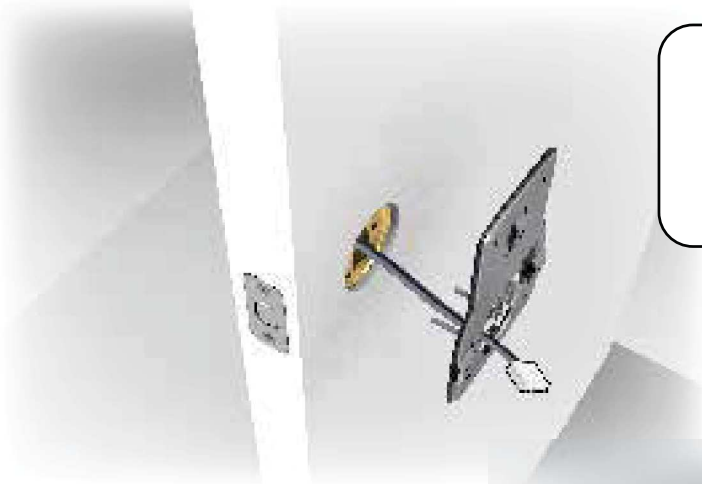


Mounting front pad



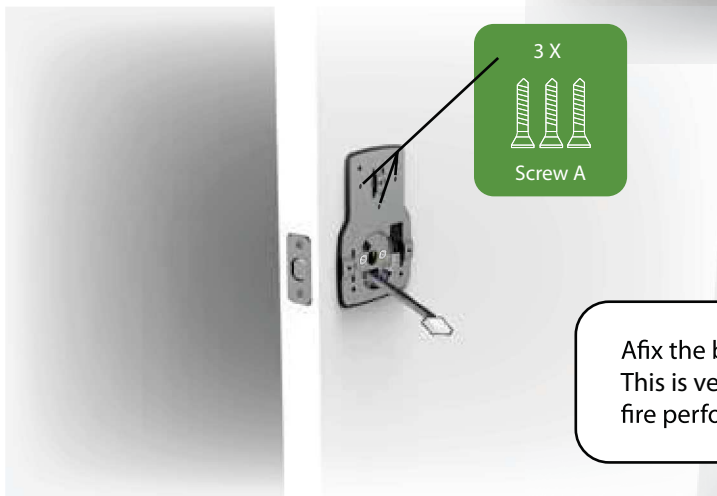
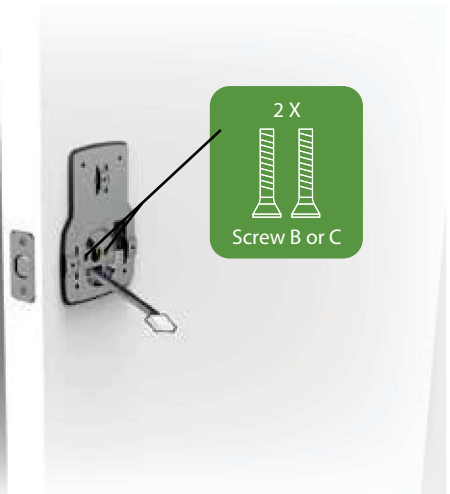
Affixing the backplate





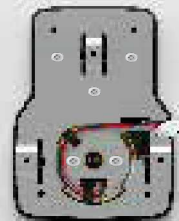
Feed the cable through the back plates bottom hole. Position the back plate onto the door.

Based upon the door thickness, secure the back plate using the correct length screws, ensuring both front panel and back plate are straight.



Afix the backplate to the door. This is very important for the fire performance of the deadbolt

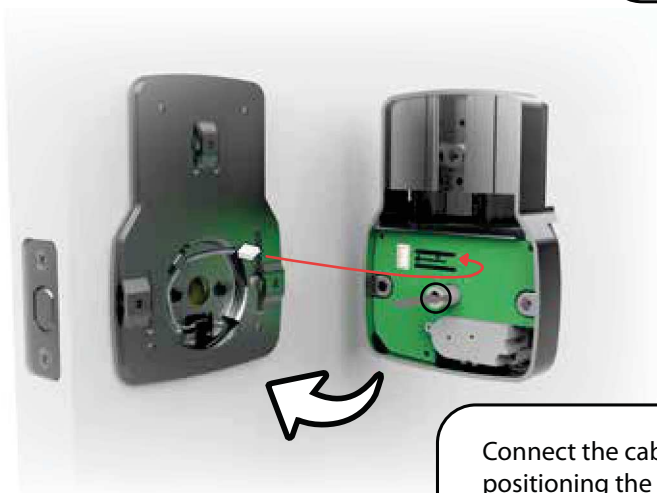
Maneuver the cable as shown by the red line, using the black cable grips.



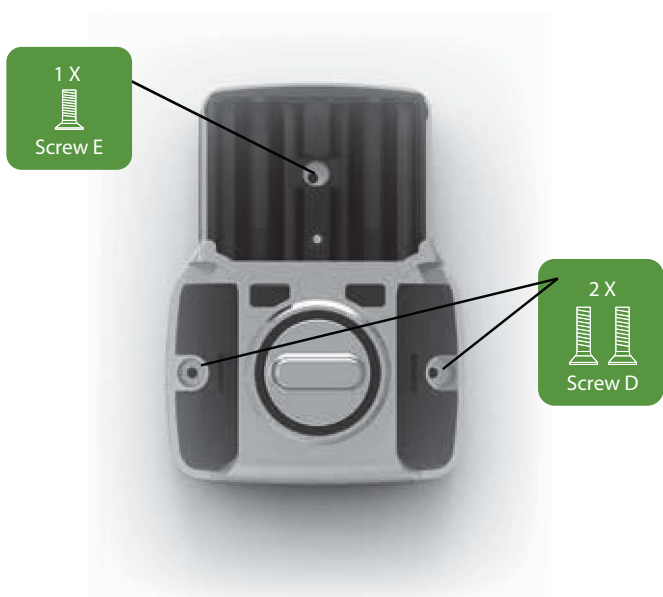
Mounting the back panel



Insert the motor tail and ensure its orientation is then horizontal, the thumbturn should as be horizontal as shown.



Connect the cable as shown, whilst positioning the back panel onto the back plate. Ensure the motor tail slots into the deadbolt.





Insert 6 x AA batteries.
Secure the battery cover & 2 x side caps

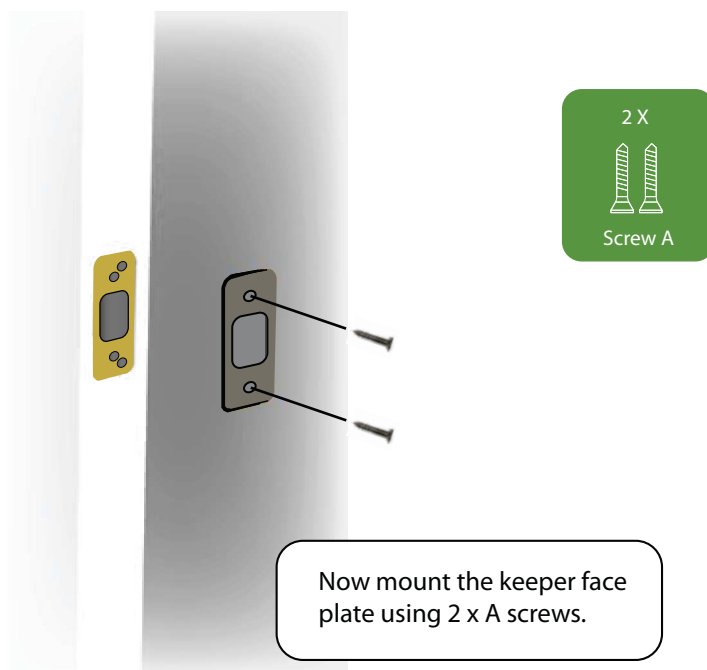
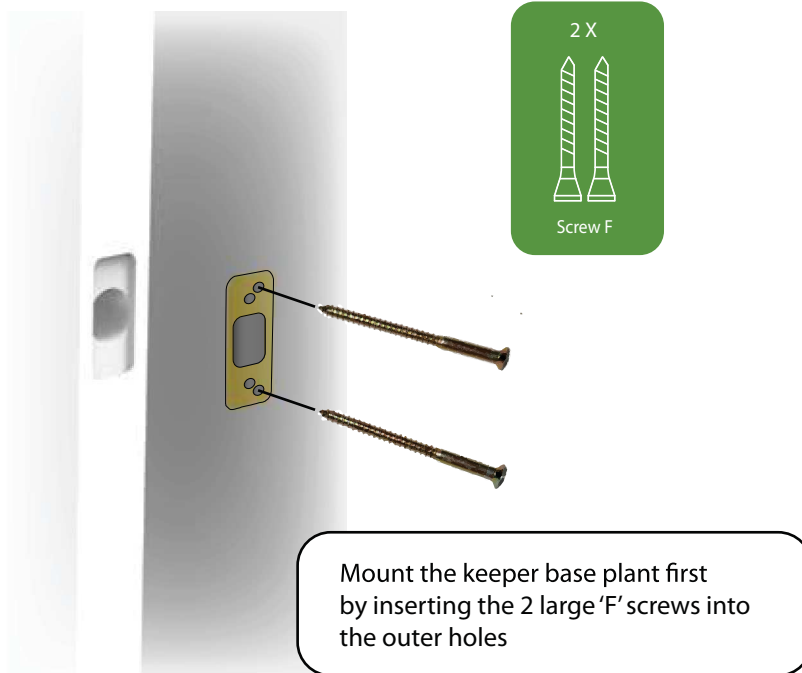


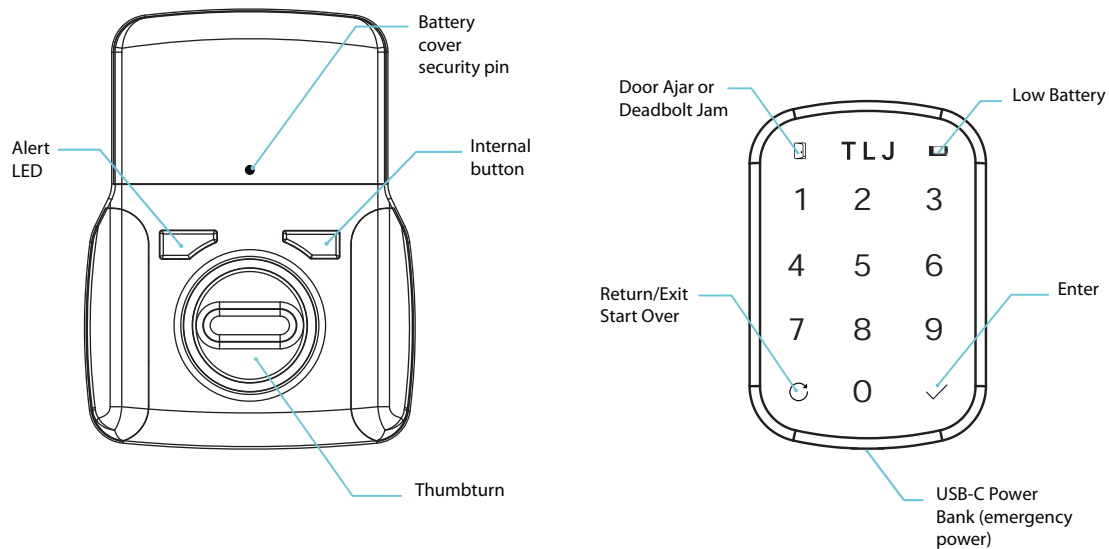
Manual checks



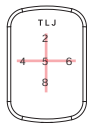
Rotate the thumb turn twist 90 degrees, towards the door edge. The deadbolt should now be applied, repeat this back & forth several times to ensure it is free & easy to rotate

Installing the keeper



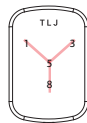


Guidance Symbols



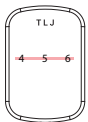
Add

The plus symbol will illuminate when the user is inputting a new PIN, i.e. 'Add new User PIN' or 'Create the Master PIN'



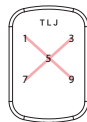
Success

The letter Y symbol will illuminate when the user has successfully completed an operation or changed a setting



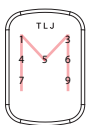
Delete

The minus symbol will illuminate when the user is removing an existing PIN, i.e. 'Delete User PIN' or 'Delete Admin User PIN'



Failure

The letter X symbol will illuminate when there has been an error such as inputting an incorrect User PIN or inputting an invalid setting parameter



Master

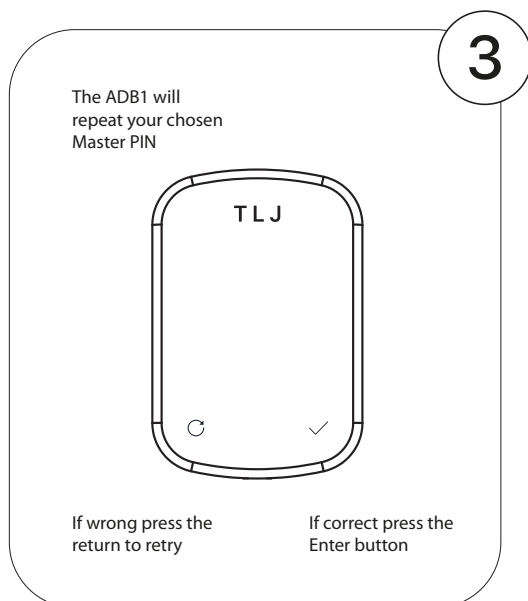
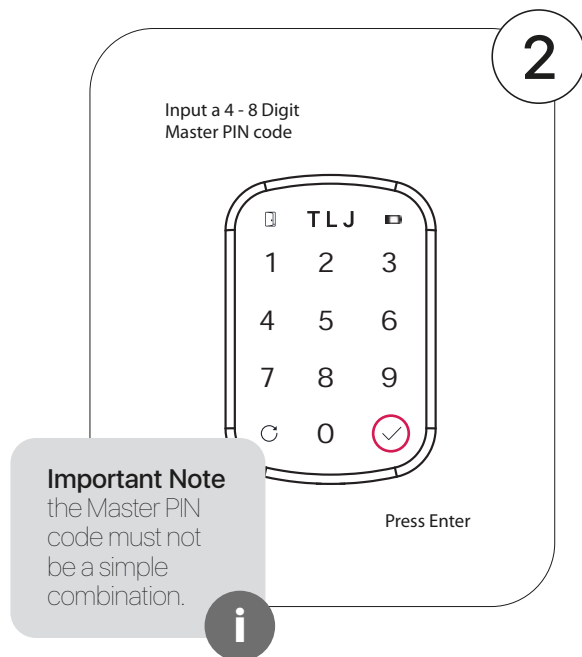
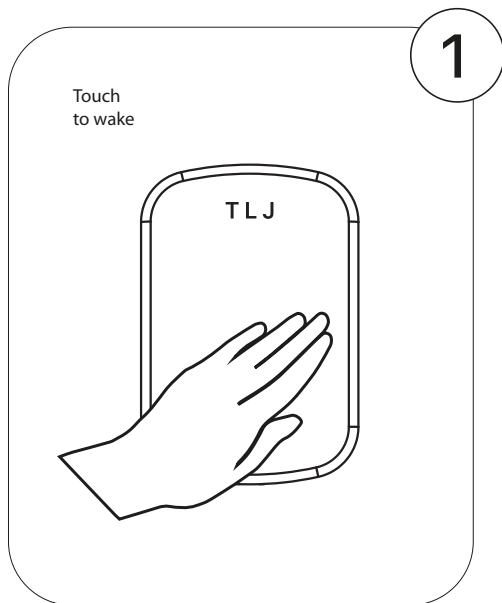
The letter M symbol will illuminate when the user is required to input the Master PIN code, i.e. 'Input Master to access the Menu'



Initial Setup

Creating the Master PIN Code

This must be performed after installation or following any factory reset. Programming the ADB1.0 is not possible until a Master PIN Code has been created.



Important Note

Default mode is Z-Wave. ADB1.0 will automatically select the directional handing after the Master PIN has been set.

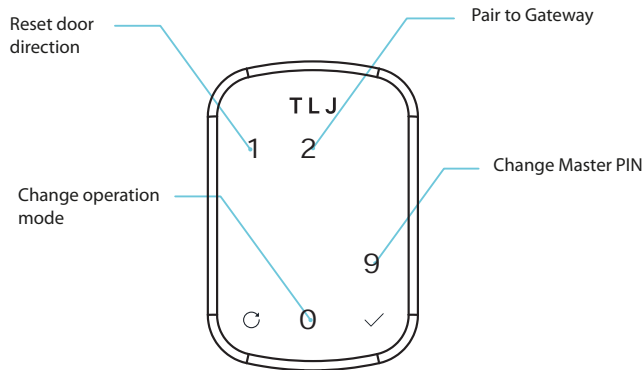


Operation Mode

The Zpad has 2 different operations; Z-Wave (controlled and managed by a 3rd party platform via a gateway) & DIY (to be controlled and managed manually using the onboard menu)

Operating Mode - Z-Wave™ (option 1)

Onboard Menu



Important Note

To enter the Menu, press and HOLD the Enter key for 3 Secs, followed by Master PIN and Enter.

3 SECS HOLD

1 - Reset door direction

The ADB1.0 automatically determines which direction is lock and which is unlock, following the Master PIN being set successfully. If the ADB1.0 is installed on a different door, then maybe this direction logic needs to be determined again.

2 - Pair/Unpair to a Z-Wave™ Gateway

Ensure to enter the Gateway into inclusion/exclusion mode at the same time, the ADB1.0 will timeout after 60 seconds of inactivity. When inclusion or exclusion is finished the ADB1.0 will sound audible beeps and return to the Main Menu.

9 - Change Master PIN

Please note the Master PIN should not be too simple. It must be 4-8 digits in length. Once inputted press the Enter Key, and watch the ADB1.0 recall it, if correct press Enter.

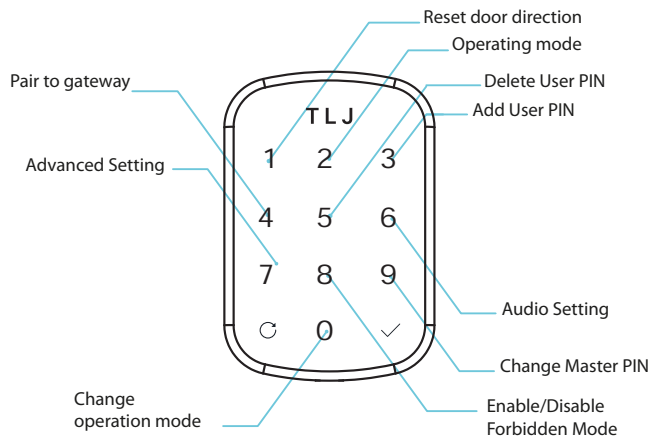
0 - Change the operating mode

1 = Z-Wave mode, controlled by a 3rd party via a gateway

2 = DIY mode, controlled manually by the onboard menu

Operating Mode - DIY (option 2)

Onboard Menu



Important Note

To enter the Menu, press and HOLD the Enter key for 3 Secs, followed by Master PIN and Enter.

3 SECS
HOLD

1 - Reset door direction

The ADB1-0 automatically determines which direction is lock and which is unlock, following the Master PIN being set successfully. If the ADB1-0 is installed on a different door, then maybe this direction logic needs to be determined again.

2 - DIY Operating Mode

There are 2 options; **1** = Auto Lock (Default), **2** = Manual Lock, i.e. stays unlocked until user locks it.

3 - Adding PIN codes or RFID tags (card, fobs etc 13.56Mhz)

There are 2 type of users, **1** = Normal User, **2** = Admin User. Normal users can only unlock/lock the door when forbidden is not enabled, where as an Admin user can. RFID credentials utilise the strictly 10 digit decimal UID (unique identifier) which is usually printed on the card itself. If not, then an encoder will be required to read the UID or even an NFC compatible smartphone utilising a freeware NFC app



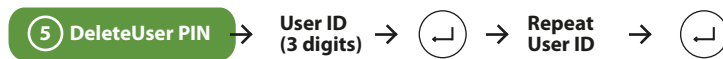
* A User ID is a 3 digit reference number which is attached to a User PIN. The user's name should be logged on the 'Users List' on page X of this user guide against the User ID in the first column. This allows User PIN (even if not known) to be deleted at a later date, as long as the *User List* is kept safe or course!

4 - Pair/Unpair to a Z-Wave™ Gateway

Ensure to enter the Gateway into inclusion/exclusion mode at the same time, the ADB1-0 will timeout after 60 seconds of inactivity. When inclusion or exclusion is finished the ADB1-0 will sound audible beeps and return to the Main Menu.

5 - Delete User PIN/RFID credential

Refer to the *User List*, to collect the 3 digit User ID which should be deleted. The *User List* is on page X of this user guide, or perhaps on a self made list. Without the User ID, the ADB1-0 must be Factory Reset which will delete **ALL** User PINs.



6 - Noise Setting

There are 3 options;

1 = Silent mode (except when using the onboard menu)

2 = Noise on (Default)

3 = Silent mode except major alerts

7 - Advanced Setting

The ADB1-0 has configuration options, below lists them alongside their default value.

⑤ DeleteUser PIN	→	User ID (3 digits)	→	[←]	→	Repeat User ID	→	[←]	
① Auto Lock Timer	→	Input 2 digits Range 01 - 99 Secs							Default 05 SECS
									The duration of time following a successful unlock until the lock will relock. Only relevant when the operating mode is 'Auto Lock', i.e. Menu option ② then option ①
② 1 Touch Locking	→	1 = ON 2 = OFF 3 = HOLD (1Sec)							Default OFF
									This function is used to quickly lock the door. Option 1 requires only the MDB1-0 to be touched and woken, Option 2 would require a valid PIN to lock the door, and Option 3 prevents accidental locking, requiring a touch & short hold for 1 second. Please not only relevant when operating mode is 'Manual Lock', i.e. Menu option ② then option ②
③ Max Failed Attempt	→	Input 2 digits Range 03 - 99 Secs							Default 5 TIMES
									The quantity of failed attempts before triggering the MDB1-0 'Lock Out', which prevents any further attempts until the Lock Out Timer has surpassed.
④ Lock Out Timer	→	Input 2 digits Range 01 - 99 Secs							Default 60 SECS
									The duration of MDB1-0 Lock Out following consecutive failed attempts in seconds.

5 2 Digit Wake	→ 1 = ON → 2 = OFF	ON	A security feature, which lights 2 random LED digits up on waking the Zpad. The user must touch these 2 digits (in any order) before using the Zpad. This can deter snooping eyes who try to memorise PIN combinations.
6 Internal Button	→ 1 = Privacy mode → 2 = Operate the bolt → 3 = Disabled	1	When activated, only admin users and Master PIN can unlock the ADB1.0. Change the bolt's current position, i.e. if bolt in, pressing button will drive the bolt out, and vice-versa. Button will do nothing
7 DPS Mode	→ 1 = OFF → 2 = ON	OFF	Door positioning sensor (DPS) monitors if the door is actually in its frame or not. An improper closed door, as well as being a security risk can also result in the deadbolt bending as it hits the frame, resulting in a jammed deadbolt. DPS works in both manual and auto-lock configurations.



Important Note

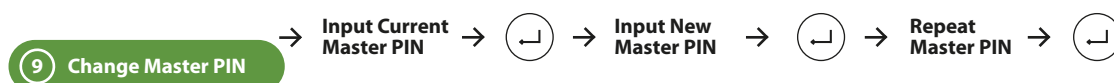
DPS (Door Position Sensor) allows the ADB1.0 to know if the door is in its frame, i.e. fully closed. This can help protect against deadbolt mis-use and thus bending/jamming.

8 - Forbidden Mode

There are 2 options; **1** = Forbidden Mode Enabled & **2** = Forbidden Mode Disabled (default).

Forbidden Mode stops ALL users both normal and admin from operating the Zpad. It can be enabled and then disabled later, i.e. useful when all access temporarily needs to be stopped but then granted again, without deleting and re-adding users. Please note the Master code can still operate the Zpad even in Forbidden Mode.

9 - Change Master PIN



Note, the Zpad will not accept Master PINs which are too simple, i.e. 123456 or 111222. The Master PIN must be between 6 - 8 digits in length. If the current Master PIN has been forgotten, then a Factory Reset will be required.

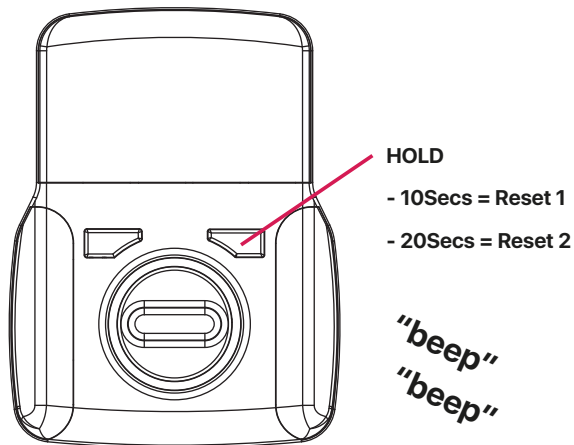
0 - Change the operating mode

1 = Z-Wave mode, controlled by a 3rd party via a gateway

2 = DIY mode, controlled manually by the onboard menu

Factory Reset

There are 2 types of Factory Reset, both detailed below.



Factory Reset 1

Reset all configurations to default status
Delete access for all users and user types
Delete the current Master PIN
Delete the current Operating Mode
Delete the directional handing
Gateway **NOT** deleted

Factory Reset 2

As per Factory Reset 1
Gateway pairing deleted

Users List - Keep It Safe

User Slot	User Type	User Full Name
<i>001</i>	<i>Admin</i>	<i>Mr John Doe</i>
<i>250</i>	<i>Normal</i>	<i>Mrs Jane Doe</i>

* This Users List is only partial, it is recommended to duplicate and extended it, then keep safe.

Troubleshooting

Symptom	Recommended Action
ADB1.0 does not respond	<ul style="list-style-type: none"> - Change batteries - Try pressing a different area on the touch screen - Try pressing a little firmer on the touch screen - Ensure batteries are installed correctly
ADB1.0 LED's appear dim	<ul style="list-style-type: none"> - Change batteries - Ensure batteries are installed correctly
ADB1.0 accepts access credential but does not unlock the door	<ul style="list-style-type: none"> - Change batteries - Pull & push the door at the same time as attempting unlock - Check keeper in frame is aligned with bolt, doors bulk & shrink
ADB1.0 does not auto lock	<ul style="list-style-type: none"> - Ensure Auto-Lock Mode is enabled - Try lowering the Auto Lock timer - Check the DPS alignment & DPS settings
Access Credentials cannot be enrolled into the ADB1.0	<ul style="list-style-type: none"> - Ensure the memory is not full - Ensure the User ID is not taken already, check the Users List - Ensure the PIN/Rfid key is not already enrolled - UserIDs must be entered within 5 secs or it will timeout
Access credential is correct but is not accepted by the ADB1.0 (4 5 6 LEDs light)	<ul style="list-style-type: none"> - Forbidden mode is enabled, only Admin users or the Master PIN can unlock the door
Access credential is correct but is not accepted by the ADB1.0 (alarm chirp sounds)	<ul style="list-style-type: none"> - The ADB1.0 is in Lock Out mode following several incorrect access attempts, await the timer to expire and try again
The ADB1.0 makes a short chirp sound when its woke	<ul style="list-style-type: none"> - This is the low battery alert, change batteries asap.

For Technical Support please visit www.TLJlimited.com
or contact your local representative

Important Note

Changes or modifications to this unit not expressly approved by the party responsible for compliance could void the user's authority to operate the equipment.

NOTE: This equipment has been tested and found to comply with the limits for a Class B digital device, pursuant to Part 15 of the FCC Rules. These limits are designed to provide reasonable protection against harmful interference in a residential installation. This equipment generates uses and can radiate radio frequency energy and, if not installed and used in accordance with the instructions, may cause harmful interference to radio communications.

However, there is no guarantee that interference will not occur in a particular installation. If this equipment does cause harmful interference to radio or television reception, which can be determined by turning the equipment off and on, the user is encouraged to try to correct the interference by one or more of the following measures:

- Reorient or relocate the receiving antenna.
- Increase the separation between the equipment and receiver.
- Connect the equipment into an outlet on a circuit different from that to which the receiver is connected.
- Consult the dealer or an experienced radio/TV technician for help.

This equipment complies with FCC radiation exposure limits set forth for an uncontrolled environment. This equipment should be installed and operated with a minimum distance of 20cm between the radiator & your body. This transmitter must not be co-located or operating in conjunction with any other antenna or transmitter.