

# Baby 6TY

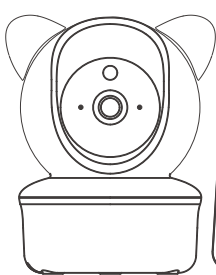
ORIGINALITY DESIGN SMART - AND BEAUTIFUL

.....

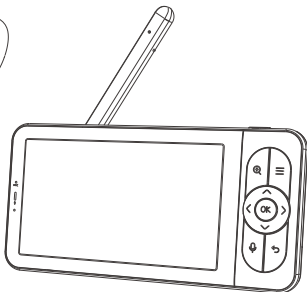
CAMERA

CE FC RoHS

## QUICK GUIDE



Model: BABY6TY-TX



Model: Baby 6TY-RX

Search 'Tuya Smart' in the App stores or scan below QR codes to download the App.

Register an user account and login in. And you will be able to add the camera into your APP account.



Download the APP



Tuya

- Please read this instruction manual carefully before using, and keep it for future reference.
- Functions and features are subject to change without further notice.

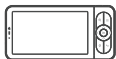
# Safety Instructions and Warnings

## Hazard Warnings: Potential Risk of Strangulation

- Please be aware that children are at risk of strangulation suffocation accidents caused by rope entanglement
- Please keep power cords away from children; maintain a distance of at least 3.5 feet (1m).
- Do not allow children to use this product as a toy without supervision.
- Please do not leave the camera in the baby cot or safety fence.
- This baby monitor kit is a monitoring aid and cannot replace the functions and responsibilities of an adult supervision.
- Do not leave your infant unattended or alone at home. Infants need the constant care and attention of an adult.
- Do not use this product in an environment that could potentially leak flammable gas, or expose the product to rain or humid conditions.



## Package Contents



Monitor



Camera



AC Power  
Adapter (Type c)



User Manual

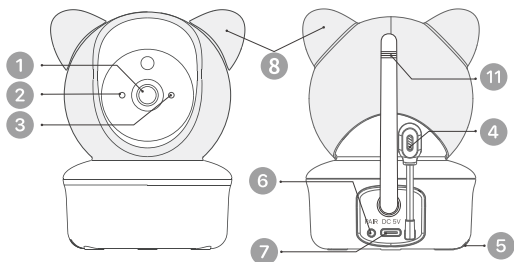


Wall mount shim

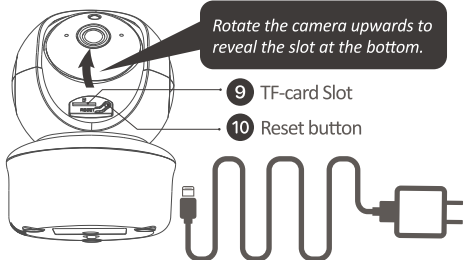


Screw Set

# 1. Meet the camera



- 1 Camera Lens
- 2 Status LED indicator
- 3 Microphone
- 4 Thermometer/Hygrometer
- 5 Speaker
- 6 Monitor pairing button
- 7 Power input (Type C)
- 8 Silicone Head Cover
- 11 Antenna

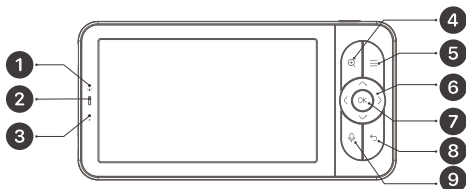


- 6 PAIR:** Press three times to pair with screen monitor. Press and hold till it sounds to reset.
- 10 REST:** Press and hold till it sound enter into pairing APP status, users can add device on app.

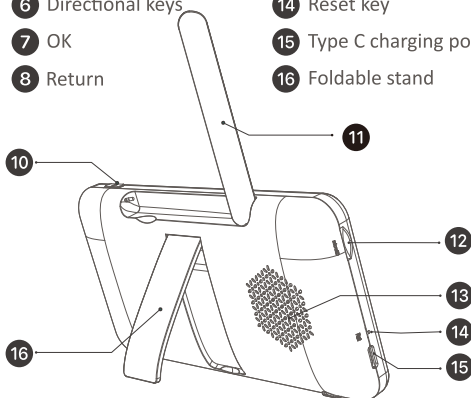
## NOTE:

- The camera needs to be plugged in to a power source before it can be used.
  - Please use the original AC adapter and power cord (3M) to power on the camera.
- 

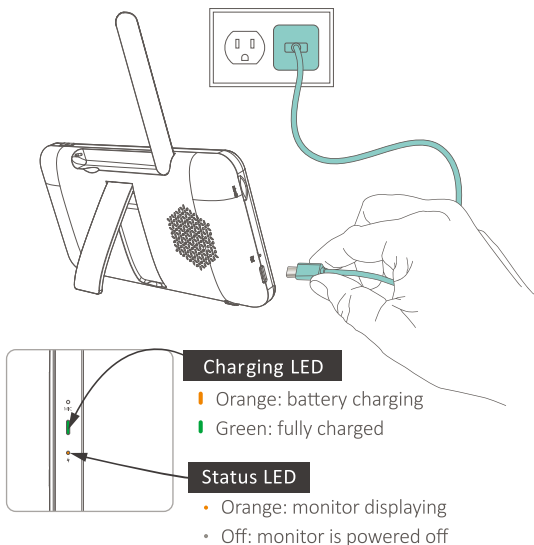
## 2. Meet the monitor



- |                          |                         |
|--------------------------|-------------------------|
| 1 Microphone             | 9 Intercom              |
| 2 LED charging indicator | 10 On/off switch        |
| 3 LED status indicator   | 11 Antenna              |
| 4 Zoom in/out            | 12 TF-card slot         |
| 5 Menu                   | 13 Speaker              |
| 6 Directional keys       | 14 Reset key            |
| 7 OK                     | 15 Type C charging port |
| 8 Return                 | 16 Foldable stand       |



### 3. Charge Your Monitor



#### Precautions:

1. The monitor comes with a built-in battery that can last up to 6 hours of continuous use after a full charge. When the battery is low, it will pop-up low power alert
2. Please use the original AC adapter and power cord(1M) for battery recharge. It takes about 5 hours to fully charge the monitor.
3. Do not use this product on a sloping or unstable surface, keep it away from heat sources to avoid possible damage, and do not place it near or on any electrical appliances.
4. Do not allow children to use this product as a toy without supervision.

## 4. App Download

Search 'Tuya Smart' in the App stores or scan below QR codes to download the App.

Register an user account and login in. And you will be able to add the camera into your APP account.



Download the APP



Tuya

## 5. Set up Wi-Fi for the camera

The camera can be paired with the monitor through its Private AP network, with up to 300 meters wireless intercom range. You can also add the camera into your APP account, setting up Wi-Fi so as to view & control your camera remotely through mobile devices.

### Steps to set up camera in your App:

#### Attention:

1. Please operate close to Wi-Fi router.
2. Make sure your smart phone connect with your 2.4Ghz Wi-Fi.
3. Make sure power supply the camera and the LED indicator is blue.
4. Make sure Wi-Fi signal is good and password is correct.
5. If you want to unbind the device from app please go to setting to remove the device or press and hold the device icon to remove the device.



Device Networking Video

(Please scan QR code to watch the operation instruction)

**Tip 1:** If you want to use new Wi-Fi or Wi-Fi password was changed after camera paired with Tuya Smart app, you can follow steps of "Scan to pair" to pair the camera with App again. Or press and hold the reset button to restart the camera then follow "pair by bluetooth" to pair the camera with Tuya app again.

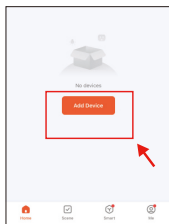
**Tip 2:** If you want to remove device from app after camera was powered off or need to use new Tuya account to pair with the device, you can press and hold the reset button to restart the camera first, after restart and pair again the the camera with Tuya Smart app by "bluetooth" .

## 1: Pair product with Tuya Smart app (Bluetooth)

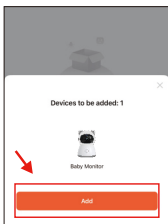
- 1.Connect your phone with 2.4G wifi , Go to phone setting to open bluetooth and enable the bluetooth access permission of the Tuya Smart APP.
- 2.Power supply the camera, after hearing a prompt tone it is powered on successfully.
- 3.Long press and hold the **"RESET"** button on camera until it sounds **"di di"** then release.
- 4.Open Tuya Smart app, it shows **"device to be added"**,then click **"Add"**.
- 5.Confirm your phone used wifi and password, then press **"Next"**, (product only support 2.4G wifi).
- 6.After paired successfully camera will sound **"duan"** to prompt, and app enter into monitor status.

## 2: Automatic discovery

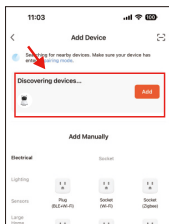
- 1.Power supply the camera to make it on working status, press and hold the **"RESET"** button go to pair status.
- 2.Open bluetooth and enable the bluetooth access permission of the Tuya Smart APP.
- 3.Open Tuya Smart app and go to home page, Press **"+"** on top right corner, and select **"Add Device"** go the add device interface and search to find the device.
- 4.After find the device press **"Add"**, and confirm you use 2.4G wifi and input the right password, then press **"Next"**.
- 5.After adding successfully press **"Done"** and app automatically go to monitor status.



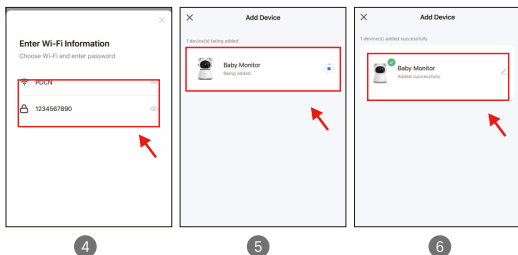
1



2

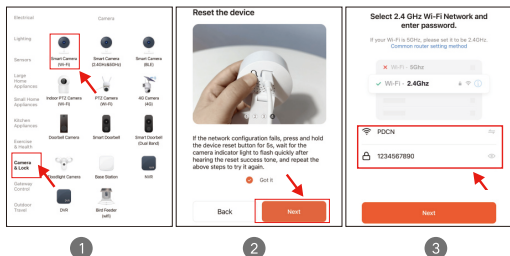


3



### 3: Scan to pair

1. Power supply the camera to make it on working status.
2. Open Tuya Smart app enter into home page Press "+", then select "Add Device".
3. Select "Camera & Look", then select "Smart Camera(Wi-Fi)", and press "Next".
4. Confirm you are using 2.4G wifi and input the correct password, then press "Next", screen will show the QR code.
5. Press and hold the "RESET" button on camera until it sound "didi".
6. Use the camera to scan the QR code, after scanning successfully camera will sound "di".
7. Press "I heard a Prompt" on app.
8. After connecting device successfully, press "done" and app automatically go to monitor status.



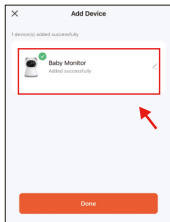




4

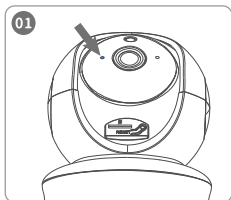


5

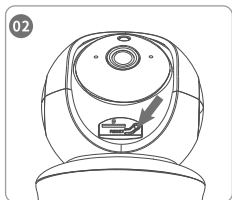


6

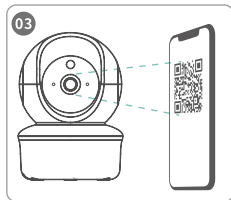
#### 4: Quick Use Schematic



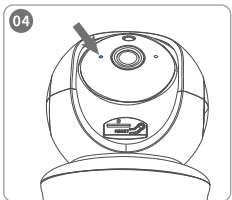
1. Plug in the power supply to power the camera, wait for a few seconds, the status indicator will change from flashing red to blue light.



2. Long press **RESET** button till you hear the tone prompted. Then start mating with the cell phone.



3. Complete the network config process following the prompted in-app instructions.



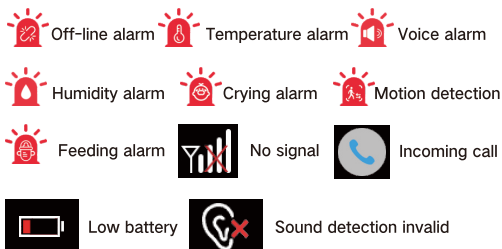
3. Adding camera completes, and the indicator light turns to solid blue.

## 6.Display main page icons



- ① Signal    ② Volume    ③ Feeding reminder    ④ Play music
- ⑤ Humidity    ⑥ Time    ⑦ Temperature    ⑧ Motion tracking enabled
- ⑨ Motion detection enabled                      ⑩ Cry detection enabled
- ⑪ Sound detection enabled                      ⑫ Battery    ⑬ Volume
- ⑭ Lullaby    ⑮ Camera intercom volume    ⑯ Brightness
- ⑰ Record video    ⑱ Take photo    ⑲ Video
- ⑳ Monitor work indicator switch    ㉑ Setting    ㉒ Two way intercom

### Other icons



## 7.Display related Settings

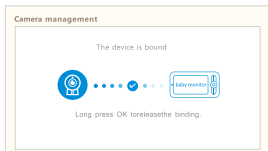
### 1.Display setting

Power supply the camera and turn on the display, display will automatically shows video from camera.

---

#### Disconnect the camera to the monitor:

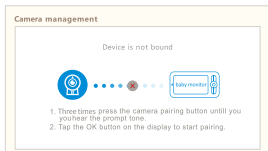
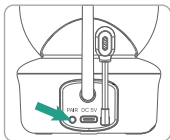
1. Click 'MENU' → select  → click 'OK' → click  , and enter into **camera management**.



2. Long press **OK** button on the monitor to release the bond.
- 

#### Reconnect the camera to the monitor:

1. Click 'MENU' → select  → click 'OK' → click  , and enter into **camera management**.

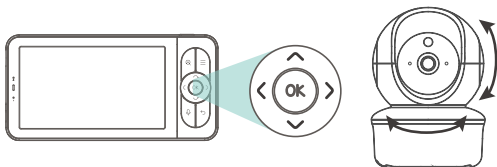


2. Three times press **PAIR** button on the camera till you hear a prompt tone.
3. Click the **OK** button on the monitor to start pairing.

## 8. Use your baby monitor kit

### Rotate the camera

When the camera is powered on, press direction buttons on the monitor, and you can rotate the camera horizontally or vertically, for a better view angle.



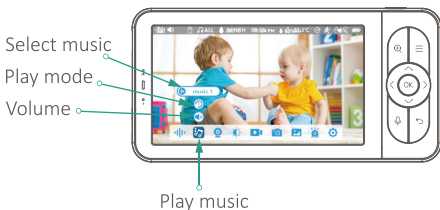
### Adjust speaker volume

1. Click '**MENU**' button to display the icon ≡ .



2. Adjust speaker volume with up & down button.

### Play music



## Display brightness

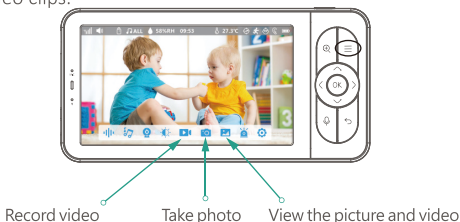
1. Click '**MENU**' button to display the icon ☰ .



2. Adjust brightness with up & down button.

## Photo & video

Insert a Micro-SD memory card (Max 128GB) to your monitor, and you will be able to record photoes and video clips.



## Turn on/off camera indicator

1. Click '**MENU**' button to display the icon ☰ .



2. Switch on/off the camera indicator light with the left/right button.



Camera



Smart Care



Feeding Reminder



Temperature And Humidity



Date & Time



Language



Sleep Mode



SD Card



Reset



Wallpaper



Device Information



Safety Protection



Camera Indicator



### Camera

To pair or unpair a camera.



### Smart care

You can open motion detection, sound detection, cry detection, motion tracking etc, then you can know your baby's situation anytime anywhere.



### Feeding reminder

When you are busy or want to feed your baby regularly remind you to feed.



### Temperature and humidity

You can monitor the humidity and temperature of the baby room in real time, and receive an alarm to take corresponding measures when the temperature and humidity the set range.



### Date & Time

You can setting displays the local time.



### Language

You can set the corresponding country language here.



### Sleep Mode

Proper use of the screen can increase standby time.



### SD Card

Check the memory card status



## Wallpaper settings

Change wallpaper here you can customize your wallpaper with your photoes in the memory card.

---



## Reset

To restore factory defaults.

---



## Device Information

Device information and penetration mode.

---



## Camera Indicator

Turn on/off the camera indicator light.

---



## Temperature and humidity

You can open or close Wi-Fi network channel, if close the device will lost connection with app, all users can not use app to monitor the camera.

you can view the records of app access the camera, also can see the Wi-Fi name and the Wi-Fi signal.

## 9.FAQ

### Q1: The monitor cannot be previewed properly?

**A1:**Check whether the monitor has connected to the camera. If not, pair the camera and the monitor firstly.

### Q2: What if the monitor screen is stuck and it doesn't work while pressing any buttons?

**A2:**Press the reset button of your monitor with the pin, and then long press the power button of your monitor to restart it

### Q3: Why the it cannot detect my SD card?

**A3:**Make sure the Micro SD card is properly installed and try formatting the SD card in FAT32 format before using.

### Q4: Why I can't get the notifications with my cell phone App when I connect the camera to the monitor?

**A4:**To be able to receive visitor notifications properly on your smartphone, it is important to allow all notifications and permissions. You can check this from your phone settings regarding app permissions within the Tuya app.

### **Q5: Why the monitor lost connection with the camera after the camera is connected to the Tuya App?**

**A5:**The monitor has a 2 minute interruption time when the camera is reset, and it will automatically resume after 2 minutes. If it doesn't recover, try to pair the monitor and camera again.

## **10.Specifications**

Frequency (Camera)	2.4GHz FHSS
Type of Modulation(Monitor)	GFSK
Transmission Range	Up to 960 feet/300 meters (Open space-No obstructions)
Power Adapter (Monitor)	Input:100-240VAC 50/60Hz ; Output: 5V, 1A
Power Adapter (Camera)	Input:100-240VAC 50/60Hz ; Output: 5V, 1A
LCD Screen	5" HD LCD
Rechargeable battery (pre-installed in parent unit)	Model:755060P 3.7V,3000mAh
Transmition Power	18dB
Image Sensor Type	1/2.9 Inch CMOS
IR LED Type	940nm
Operation Enviroment	Indoor use only; Temperature: 32-104°F/0-40°C; Humidity: 5%-90%rh (relative humidity)



# FCC Statement

1. This device complies with Part 15 of the FCC Rules. Operation is subject to the following two conditions:

(1) This device may not cause harmful interference.

(2) This device must accept any interference received, including interference that may cause undesired operation.

2. Changes or modifications not expressly approved by the party responsible for compliance could void the user's authority to operate the equipment.

Note: This equipment has been tested and found to comply with the limits for a class B digital device,

pursuant to Part 15 of the FCC Rules. These limits are designed to provide reasonable protection against

harmful interference in a residential installation.

This equipment generates uses and can radiate radio frequency energy and, if not installed and used in

accordance with the instructions, may cause harmful interference to radio communications. However,

there is no guarantee that interference will not occur in a particular installation. If this equipment does

cause harmful interference to radio or television reception, which can be determined by turning the

equipment off and on, the user is encouraged to try to correct the interference by one or more of

the following measures:

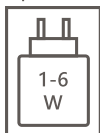
- Reorient or relocate the receiving antenna.
- Increase the separation between the equipment and receiver.
- Connect the equipment into an outlet on a circuit different from that to which the receiver is connected.
- Consult the dealer or an experienced radio/TV technician for help.

The device has been evaluated to meet general RF exposure requirement. This equipment should be installed and operated with a minimum distance of 20 cm between the radiator and your body. (For Model: BABY6TY-TX)

The device has been evaluated to meet general RF exposure requirement. The device can be used in portable exposure condition without restriction. (For Model: Baby 6TY-RX)



Input: 5V 1A



Made in China  
Ver:15