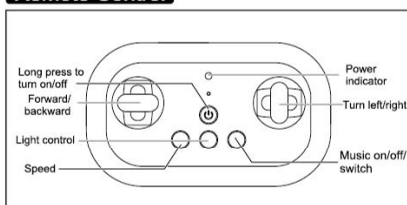


POP-UP KART User Manual

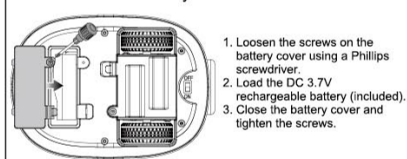


Remote Control

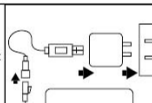


Battery and Charging

Battery installation for car

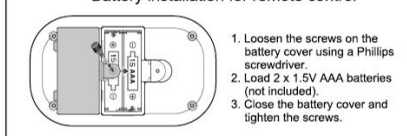


Charging the battery of remote-controlled vehicle
(1) Remove the battery from the vehicle body;
(2) Connect the USB cable and the battery to the power supply and the USB indicator light is lit up in red.
(3) The USB indicator light goes out after the battery is fully charged.



Caution:
1. Only the original battery and charger (USB) can be used for charging.
2. Do not leave during charging.
3. Keep the battery in a shade place to avoid direct sunlight.
4. Do not aim at the eyes or face while playing.

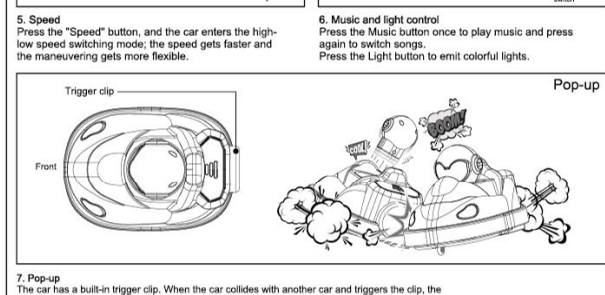
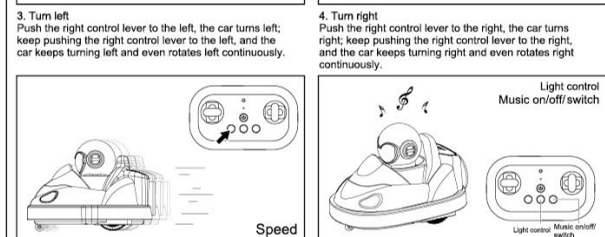
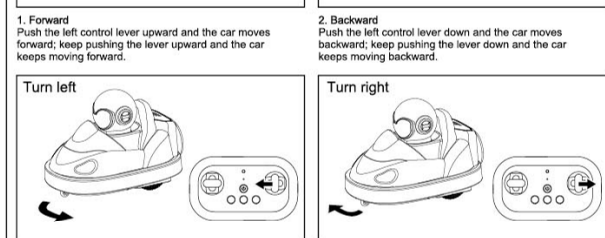
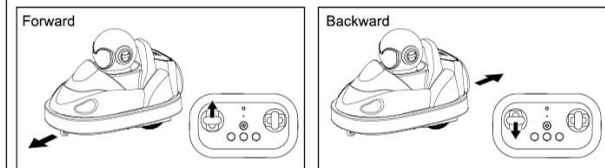
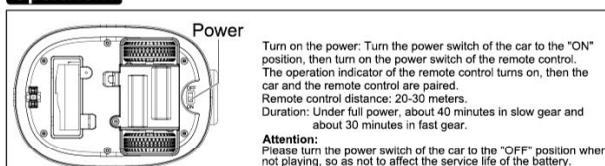
Battery installation for remote control



Trouble Shooting Guide

Problem	Cause	Solution
Remote control does not work	1. Batteries are installed incorrectly.	1. Check that the batteries are installed with correct polarity (+/-) as shown inside the battery compartment.
	2. The battery is low.	2. Replace new batteries.
	3. Vehicle is out of range of remote control.	3. Ensure the distance of remote control within 40 meters, point remote control at the vehicle.
	4. Fail to link remote control with vehicle.	4. Remove and reinstall the batteries to the remote control. Re-set the vehicle OFF to ON. Move the sticks on the remote control to re-link remote control and vehicle.
Vehicle does not work properly	1. The power switch is in the "OFF" position.	1. Turn the power switch to the "ON" position.
	2. The vehicle is slow to respond.	2. Charge the vehicle.
	3. Vehicle is out of range of remote control.	3. Remove and reinstall the batteries to the remote control. Re-set the vehicle OFF to ON. Move the sticks on the remote control to re-link remote control and vehicle.

Operations



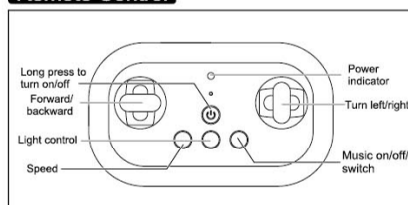
Warning

An adult must be present for supervision and instruction during use. The User Manual contains important information and shall be preserved for reference.

POP-UP KART User Manual

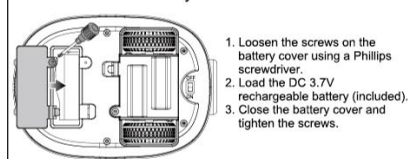


Remote Control

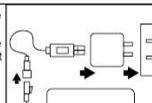


Battery and Charging

Battery installation for car

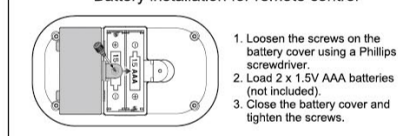


Charging the battery of remote-controlled vehicle
(1) Remove the battery from the vehicle body;
(2) Connect the USB cable and the battery to the power supply and the USB indicator light is lit up in red.
(3) The USB indicator light goes out after the battery is fully charged.



Caution:
1. Only the original battery and charger (USB) can be used for charging.
2. Do not leave during charging.
3. Keep the battery in a shade place to avoid direct sunlight.
4. Do not aim at the eyes or face while playing.

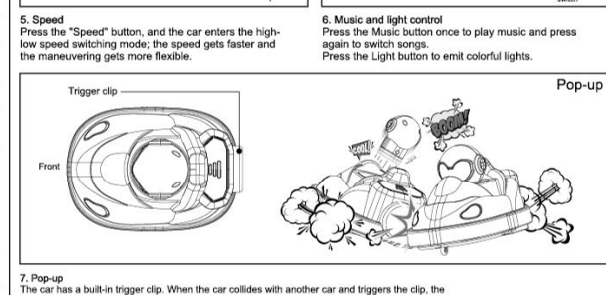
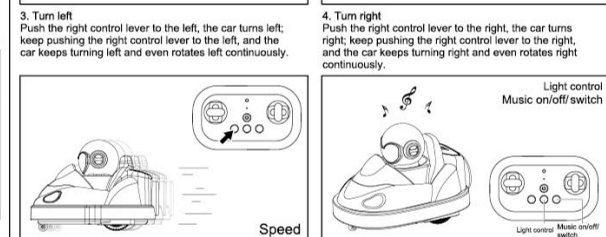
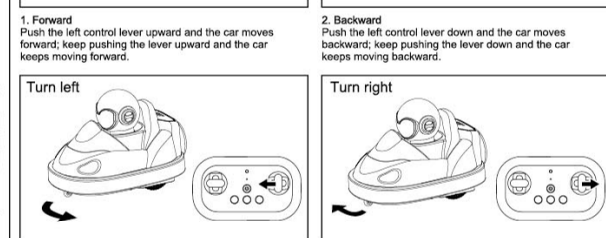
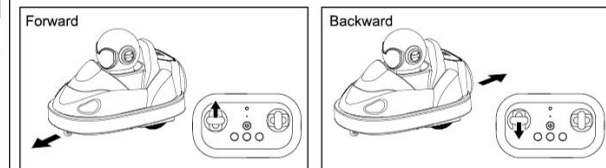
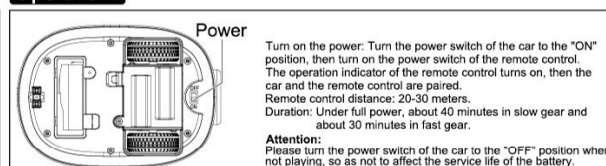
Battery installation for remote control



Trouble Shooting Guide

Problem	Cause	Solution
Remote control does not work	1. Batteries are installed incorrectly.	1. Check that the batteries are installed with correct polarity (+/-) as shown inside the battery compartment.
	2. The battery is low.	2. Replace new batteries.
	3. Vehicle is out of range of remote control.	3. Ensure the distance of remote control within 40 meters, point remote control at the vehicle.
	4. Fail to link remote control with vehicle.	4. Remove and reinstall the batteries to the remote control. Re-set the vehicle OFF to ON. Move the sticks on the remote control to re-link remote control and vehicle.
Vehicle does not work properly	1. The power switch is in the "OFF" position.	1. Turn the power switch to the "ON" position.
	2. The vehicle is slow to respond.	2. Charge the vehicle.
	3. Vehicle is out of range of remote control.	3. Remove and reinstall the batteries to the remote control. Re-set the vehicle OFF to ON. Move the sticks on the remote control to re-link remote control and vehicle.

Operations



Warning

An adult must be present for supervision and instruction during use. The User Manual contains important information and shall be preserved for reference.

FCC Warning

This device complies with part 15 of the FCC Rules. Operation is subject to the following two conditions: (1) This device may not cause harmful interference, and (2) this device must accept any interference received, including interference that may cause undesired operation.

Any Changes or modifications not expressly approved by the party responsible for compliance could void the user's authority to operate the equipment.

Note: This equipment has been tested and found to comply with the limits for a Class B digital device, pursuant to part 15 of the FCC Rules. These limits are designed to provide reasonable protection against harmful interference in a residential installation. This equipment generates uses and can radiate radio frequency energy and, if not installed and used in accordance with the instructions, may cause harmful interference to radio communications. However, there is no guarantee that interference will not occur in a particular installation. If this equipment does cause harmful interference to radio or television reception, which can be determined by turning the equipment off and on, the user is encouraged to try to correct the interference by one or more of the following measures:

- Reorient or relocate the receiving antenna.
- Increase the separation between the equipment and receiver.
- Connect the equipment into an outlet on a circuit different from that to which the receiver is connected.
- Consult the dealer or an experienced radio/TV technician for help.

The device has been evaluated to meet general RF exposure requirement. The device can be used in portable exposure condition without restriction.