

INS-C027

Technical specification

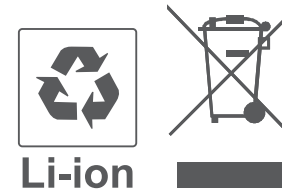
- Input voltage :CR2430(3v)
- Transmitting frequency:433.92MHz
- Operatingtemperature:-5°C~50 °C
- Range: 40–milliwatt

Function instruction

WR06-05CH is 5-channel emitter or WR06-01CH is 1-channel emitter. One number of screen means one control channel. Press "channel choose" button P1- (numberde-
scending) or P1+ (number increasing) to change the channel. On the analogy of this.loose finger when the screen shows the suitable channel that you select effective channel. If screen number show "o" that means all channels if effective (group controlstate).



Notice: Emitter couldn't be exposed to moisture and striked, so as not to affect life, When you use emitter, if found emission distance obviously short or less sensitive, please change another same new battery, Please have batteries for recycling. Caution: Risk of explosion if battery is replaced by an incorrect type. Dispose of used batteries according to the instructions.

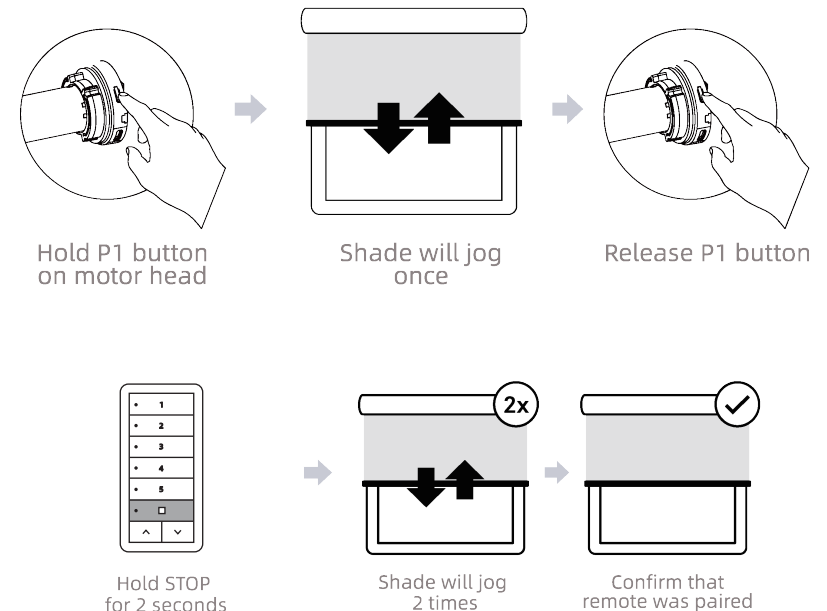


Do not dispose of in general waste.
Please recycle batteries and damaged
electrical products appropriately.

WR06-05CH WR06-01CH

Emitter specification A-07 Mar 2024

Pair remote with shade



FCC WARNING

This device complies with part 15 of the FCC Rules. Operation is subject to the following two conditions: (1) this device may not cause harmful interference, and (2) this device must accept any interference received, including interference that may cause undesired operation.

Any changes or modifications not expressly approved by the party responsible for compliance could void the user's authority to operate the equipment.

NOTE: This equipment has been tested and found to comply with the limits for a Class B digital device, pursuant to Part 15 of the FCC Rules. These limits are designed to provide reasonable protection against harmful interference in a residential installation. This equipment generates, uses and can radiate radio frequency energy and, if not installed and used in accordance with the instructions, may cause harmful interference to radio communications. However, there is no guarantee that interference will not occur in a particular installation.

If this equipment does cause harmful interference to radio or television reception, which can be determined by turning the equipment off and on, the user is encouraged to try to correct the interference by one or more of the following measures:

- Reorient or relocate the receiving antenna.
- Increase the separation between the equipment and receiver.

- Connect the equipment into an outlet on a circuit different from that to which the receiver is connected.
- Consult the dealer or an experienced radio/TV technician for help.

Operation Frequency: 433.92MHz

Modulation Type: FSK

Number Of Channel: 1CH

Antenna Designation: PCB Antenna

Antenna Gain: -3 dBi