

# User Guide



**Speaksee**  
Microphone Kit



# Nice to meet you!

We would like to share some tips to help you get acquainted with the Speaksee Microphone Kit.



For a full user manual, please visit:

**[speak-see.com/manual](https://speak-see.com/manual)**

Handleiding | Handbuch | Manuel

## We care about you

Please do not hesitate to contact Speaksee with any questions or feedback. We are always looking to improve our products.

The answers to the most frequently asked questions can be found on:

**[speak-see.com/help-center](https://speak-see.com/help-center)**



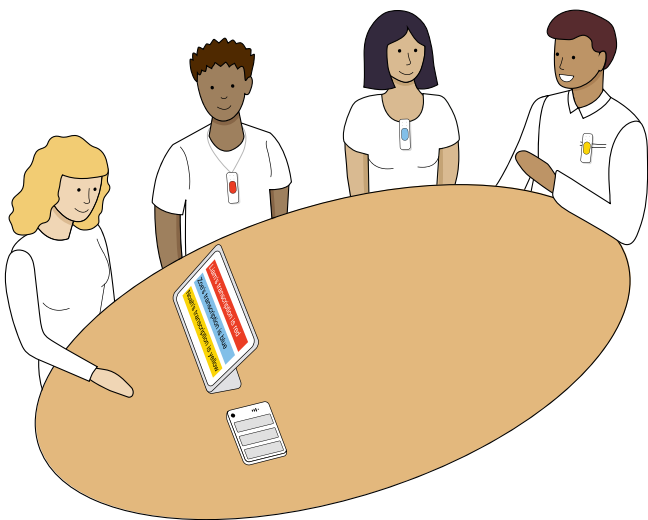
## Your conversations are secure

Feel free to use your Microphone Kit in any setting. Your transcriptions are hardware and software encrypted.

# How to use

This Speaksee Microphone Kit transcribes what people are saying in real time, even in groups and when there is background noise.

Use the Speaksee app on your smartphone, tablet or laptop and view who says what. The speech picked up by each microphone is displayed in a different colour.



## Get started

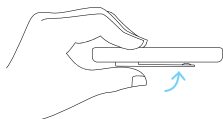
At first use, set up your Microphone Kit following the 3 steps on the “Quickstart Card” that is included with your Microphone Kit.

# How to wear

Each speaker should wear a microphone to transcribe a conversation. To pick up the voice of the person wearing it, it is important that the microphone points upwards towards the mouth of the speaker.

## Clip or neck strap

Use the clip for shirts that have a top pocket or a low neckline.



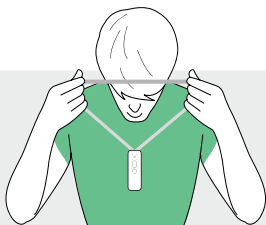
For all other clothing, attach the neck strap to the microphone.



## Correct wear



Clipped to low neckline shirt



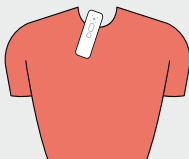
Neck strap for high neck shirts



## Incorrect wear



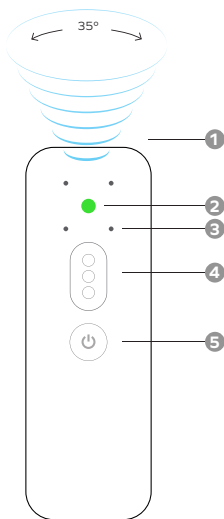
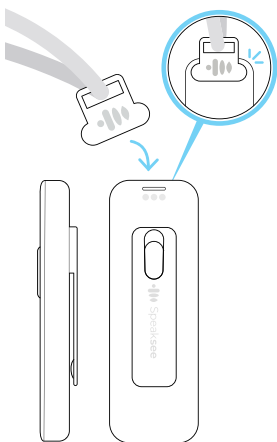
Clipped into shirt on an angle



Clipped onto high neck shirt

# Microphone overview

Each microphone has a focused detection range for speech. Speaksee's AI further improves speaker identification for the best accuracy experience.



**1 Focused speech detection**

To pick up the voice of the person wearing it.

**2 LED light**

Indicating the microphone status. View the app or user manual to learn more.

**3 Microphone receivers**

To listen and transcribe what is being said in real-time.

**4 Colour puck**

Change the colour puck to suit your style or usage situation. Nine different colours are provided with each Microphone Kit.

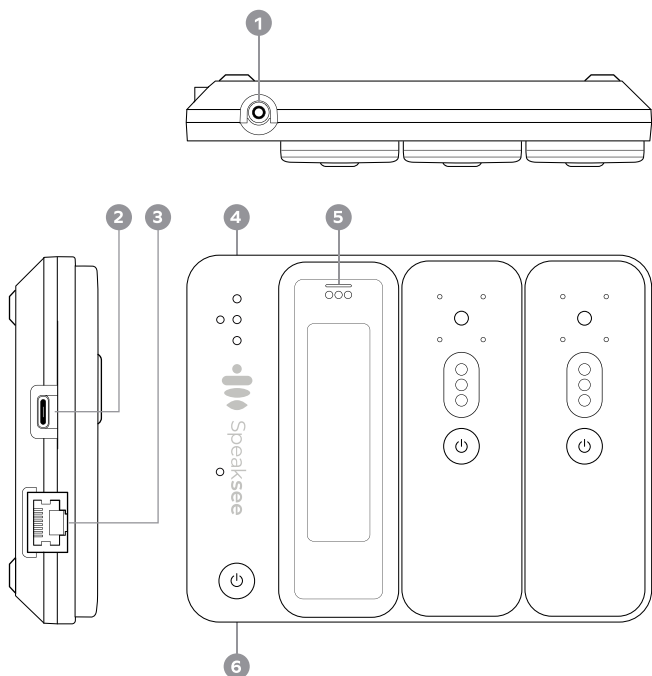
**5 Power button**

After switching on the charging dock, switch on the microphones by pressing this power button.

## Additional use

- You can combine up to 3 sets of Microphone Kits, to transcribe conversations of up to 9 people.
- The Speaksee Microphone Kit can also be an assistive tool for people without hearing loss.

# Charging dock overview



## 1 Audio jack port

Connect your hearing aid streaming device, headphones or earphones to directly receive the audio picked-up by the Speaksee Microphone Kit.

## 2 USB-C charge port

Use this port to charge your Microphone Kit.

## 3 Ethernet port

Connect via cable internet with this port, as alternative to Wi-Fi.

## 4 LED Lights

To indicate the charging dock status. View the app or user manual to learn more.

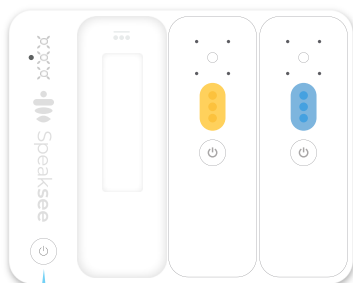
## 5 Charging pins

To connect the microphones to the dock to charge them.

## 6 Power button

Press this to turn on the charging dock. Then turn on the microphones separately.

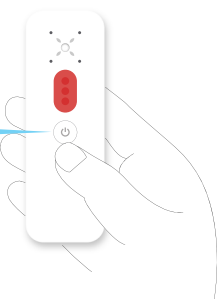
# How to turn on



1. Press and hold the dock power button until the LED light(s) turn on to indicate the status.

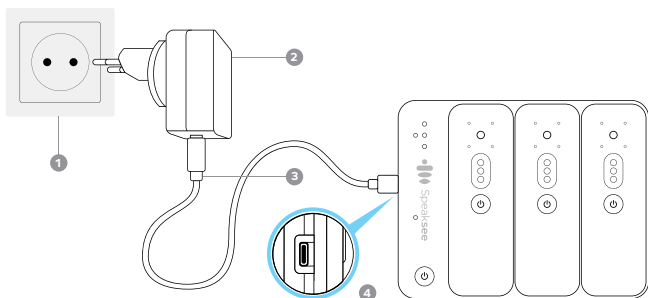


2. Press and hold the microphone power button until the LED light turns on to indicate the status.



## How to charge

To charge your Microphone Kit, only use the power supply provided with it.



- 1 **Power outlet**  
Will look different depending on the country you are in.
- 2 **International adaptor**  
Change the adaptor head to suit your power outlet.
- 3 **USB-C cable**  
To connect the adaptor to the charging dock.
- 4 **USB-C port**  
Plug the USB-C cable into this port of the charging dock.

