

Shenzhen Puda micro high-tech Co., LTD

# 样品承认书

## SPECIFICATION FOR APPROVAL

Model WIFI: SLK-PDW-B2.5-195-B

# WIFI Antenna

## 1. Explanation of Product number :

S L K - P D W - B 2 . 5 - 1 9 5 - B

1                      2                      3



Product Code:

(1) Antenna Name:

B2.5: Brass(2.5\*25\*1.1)

(2) Cable:

195: 195MM

(3) Cable Color:

B: Black

## 2. Features

- \*Stable and reliable in performances
- \*Compact size
- \*RoHS compliance

## 3. Applications

- \* IEEE802.11 (b/g/n)
- \* Hand-held devices when WIFI (802.11 b/g/n) functions are needed

## 4. Description

PDW's Brass antenna series are specially designed for WIFI (802.11b/g/n) applications. Based on PDW's proprietary design and processes, this Brass antenna has excellent stability and sensitivity to consistently provide high signal reception efficiency.

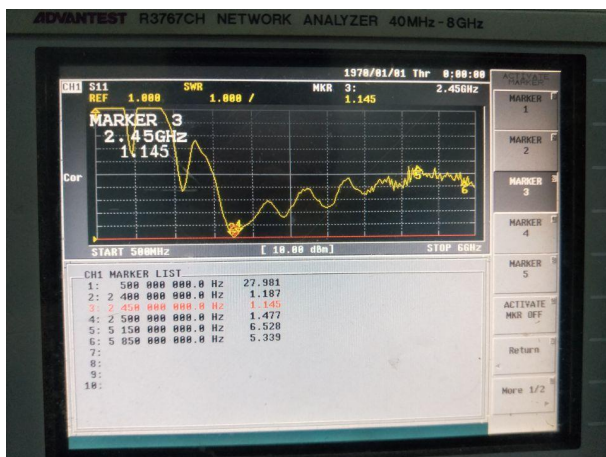
## 5. Electrical Specifications

### 5-1

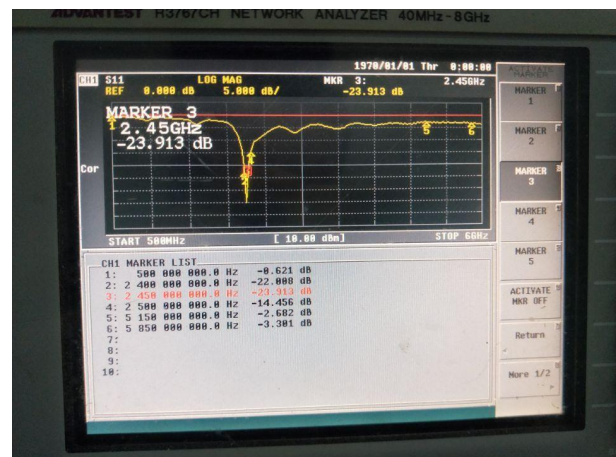
Characteristics	Specifications	Unit
Outline Dimensions	2.5 x 25 x 1.1	mm
Center Frequency	2.4-2.5	GHz
Bandwidth(under-10dB return loss)	130min	MHz
VSWR	2max	
Impedance	50	$\Omega$

### 5-2

#### VSWR



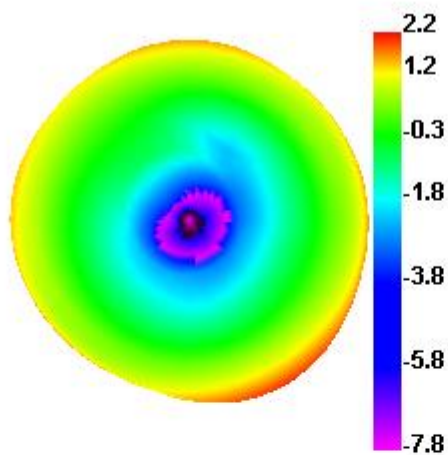
#### S11



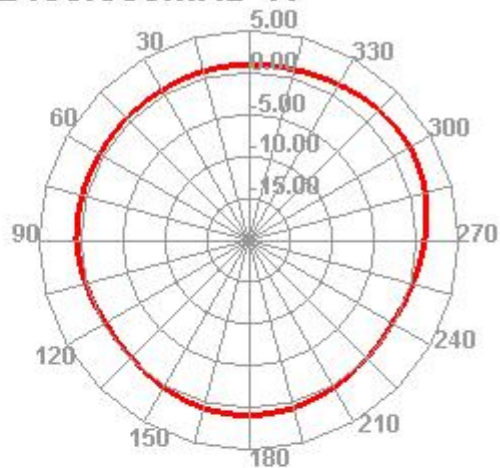
### 5-3.WIFI Antenna Gain/Efficiency/Radiation Pattern of 3D

Freq (MHz)	Effi (%)	Effi (dB)	Gain (dBi)
2400	81.82	-0.87	2.4
2410	79.54	-0.99	2.39
2420	73.5	-1.34	2.05
2430	72.87	-1.37	2.23
2440	75.02	-1.25	2.41
2450	74.76	-1.26	2.2
2460	75.32	-1.23	2.44
2470	77.61	-1.1	2.55
2480	77.44	-1.11	2.43
2490	75.11	-1.24	2.19
2500	73.5	-1.34	1.82

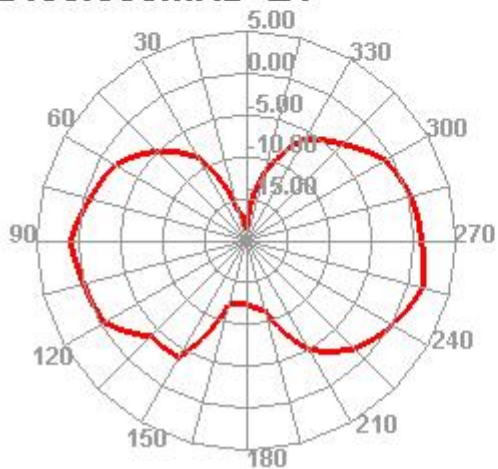
**2450.000MHz**



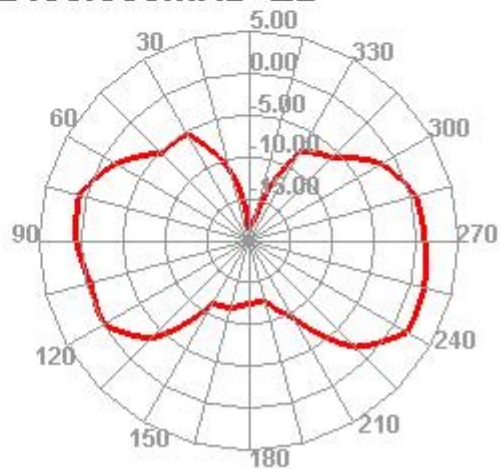
**2450.000MHz H**



**2450.000MHz E1**



**2450.000MHz E2**



## 6. Antenna Dimensions (unit: mm)

