

wireless speaker bottle



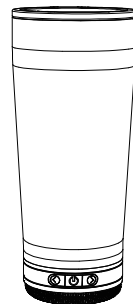
USER MANUAL

1 Important Notes



- Please read this manual carefully before use.
- Remove speaker from the tumbler body before washing.
- Please charge speaker with power adapter(output rated voltage 3.2-4.2V).
- Charge in full before first use.
- Changes or modifications not expressly approved by the party responsible for compliance could void the user's authority to operate this device.
- This device complies with part 15 of the FCC Rules. Operation is subject to the following two conditions: (1) This device may not cause harmful interference, and (2) this device must accept any interference received, including interference that may cause undesired operation.
- USB Cable included for charging only.

2 Product Contents



① Wireless Speaker Bottle



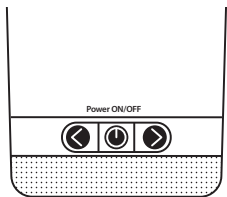
② Micro USB charge cable

3 Technical Information

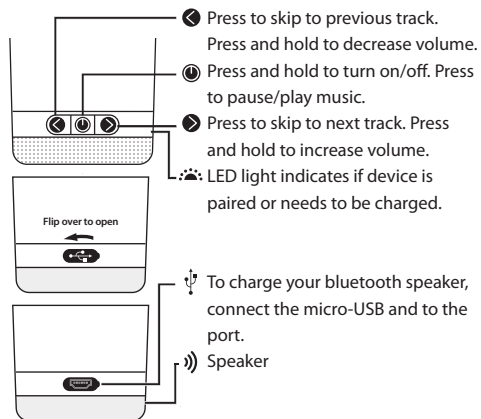
Working Voltage	3.2-4.2V
Charging Power	DC 5V \pm 0.25V
Bluetooth Version	Bluetooth5.0
Recharge Method	micro USB
Battery Capacity	450mA
Rated Power	1.7W
Bluetooth Range	Barrier Free Space: \geq 32 feet, Obstacle Space: \geq 16 feet
Bottle Material	Double Wall Stainless Steel

4 Connecting Your Device

- Turn on bluetooth speaker by pressing and holding
- Turn your bluetooth device on search mode. Find device titled "B83" and select.
- Once a connection with media device has been established, "connected" will sound.



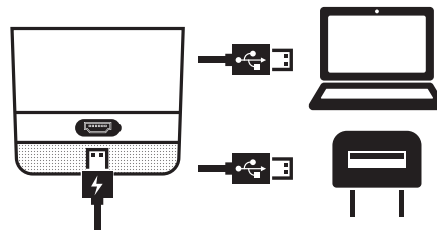
5 Tumbler Functions



6 Power Recharging

Connect the USB cable included to charge your bluetooth speaker tumbler through a computer USB port or power adapter.

Low Power Warning: When voltage is lower than 3.3V, "low battery please charge" will sound. Leave for at least 1.5 hours for full charge.



7 Tumbler Cleaning Instructions



- To clean the tumbler, twist to separate the speaker bottom from the tumbler body first. Clean speaker bottom separately by wiping with a damp cloth to avoid damage to the speaker.
- Hand wash tumbler recommended.
- Use non-abrasive cleaner.
- To clean speaker, wipe with a damp cloth.

FCC Statement

This equipment has been tested and found to comply with the limits for a Class B digital device, pursuant to Part 15 of the FCC Rules. These limits are designed to provide reasonable protection against harmful interference in a residential installation. This equipment generates uses and can radiate radio frequency energy and, if not installed and used in accordance with the instructions, may cause harmful interference to radio communications. However, there is no guarantee that interference will not occur in a particular installation. If this equipment does cause harmful interference to radio or television reception, which can be determined by turning the equipment off and on, the user is encouraged to try to correct the interference by one or more of the following measures:

- Reorient or relocate the receiving antenna.
- Increase the separation between the equipment and receiver.
- Connect the equipment into an outlet on a circuit different from that to which the receiver is connected.
- Consult the dealer or an experienced radio/TV technician for help.

This device complies with part 15 of the FCC Rules. Operation is subject to the following two conditions:

(1) This device may not cause harmful interference, and (2) this device must accept any interference received, including interference that may cause undesired operation.

Changes or modifications not expressly approved by the party responsible for compliance could void the user's authority to operate the equipment.

Portable device statement:

The device has been evaluated to meet general RF exposure requirement. The device can be used in portable exposure condition without restriction.