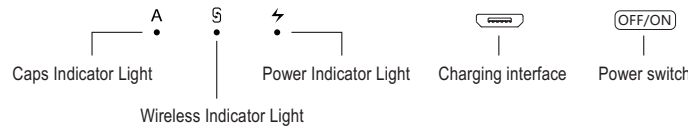


Keyboard instruction

Please read the instructions carefully before use



Keyboard connection operation:

- 1. Turn on the power supply, and the green indicator light will be lit for one second (if the instruction is red, please charge in time).
Press the matching key "Fn+C/🔌" for 1 second, the Wireless indicator lights flicker into the pairing state, and the effective time is about 120 seconds.
Open the Wireless search function of the external device, click the "Wireless Keyboard" searched.
After the pairing is successful, the indicator lights go out, and you can use the keyboard.

- 2. If there is no operation in 10 minutes, the keyboard will go to sleep state and wait for 2~3 seconds by any key to wake up.

Note: please refer to the following instructions according to the actual functions of the keyboard: (Partial product support) Please select the input program from the system of the corresponding device, press "FN+And/ Win/ IOS" for 1 seconds to switch, And the bluetooth light will light up when the switch is successful.

Fn+And is converted to Android ;

Fn+Win is converted to Windows;

Fn+iOS is converted to iOS.

Disconnect the keyboard connection:

- * If you want to break the connection between keyboard and device, please clear the pairing information in the device, or turn off the keyboard power directly.

Electricity indicator:

- * If the power indicator light is red slowly, the power is low, please charge it in time, the red light is bright when charging. When the indicator is green, it is full, please disconnect the charging power to ensure safety.

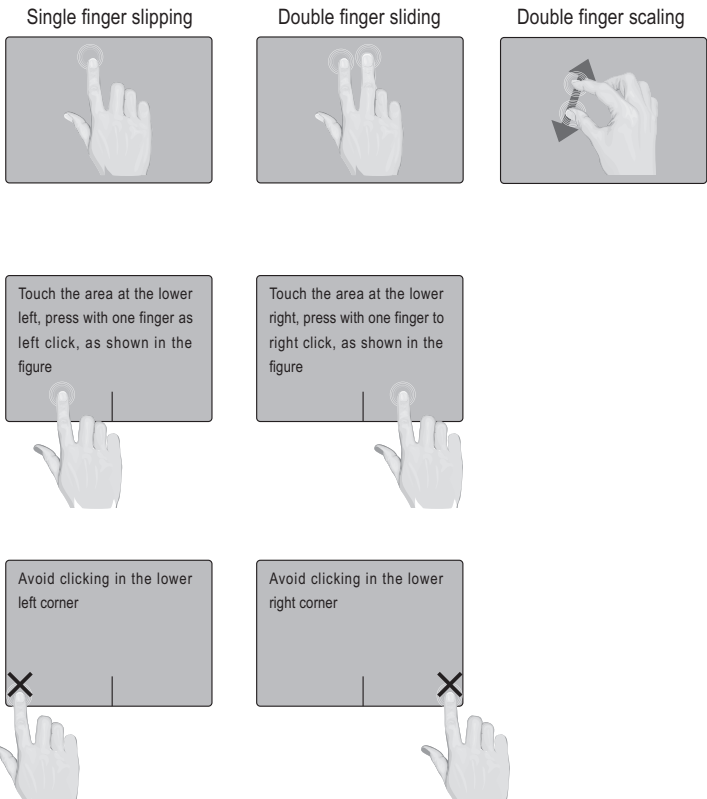
Function key: when the key has more than one character or function icon, press Fn or Fn+Shift.

Note: Based on the open source nature of the operating system, different brands of devices may have some function keys inconsistent with the table or unresponsive. Unusual characters in IOS system please use with Alt or Alt+Shift, Please use the WIN/AND system with Alt Gr.

	WINDOWS	ANDROID	IOS
🏠	Back To Home	Back To Home	Back To Home
🔍	Searching	Searching	Searching
✉️	Email	Email	Virtual Keyboard
🌐	Browser	Browser	Change Input Method
📸	Screenshots	Screenshots	Screenshots
☀️	Reduce Backlight	Reduce Backlight	Reduce Backlight
🌞	Increase Backlight	Increase Backlight	Increase Backlight
⏮	Previous Song	Previous Song	Previous Song
⏸	Play/pause	Play/pause	Play/Pause
⏭	Next Song	Next Song	Next Song
🔊	Sound Off	Sound Off	Sound Off
🔊	Volume Down	Volume Down	Volume Down
🔊	Volume Up	Volume Up	Volume Up
🔒	Lock Screen	Lock Screen	Lock Screen
↶	Back	Back	Cancel the input
🖱	Windows	The function keys	CMD=Command
🖱	Stop Using Mouse	Stop Using Mouse	Stop Using Mouse

Please refer to the following instructions according to the actual functions of the purchased products : (Partial product support)

Touch the mouse: Different operating system, gesture command will be different, please refer to the actual situation of the product.



This icon indicates that the keyboard supports luminous function : (Partial product support)

By pressing this icon key, you can (turn on/Adjust the brightness/turn off) the luminous function of the keyboard.

If in the off state, press to turn on the luminescence, then press the brightness to increase 30%, then press the brightness to increase 30% again, then press again to turn off the luminescence; Loop through.

FN+💡 can adjust the luminous color, and switch between different colors in turn.

Note:

If the light can not be lit, or immediately after the light off, please timely charge; If the battery capacity is below 20%, the keyboard will force this function off.

Special notes:

The battery life of the keyboard with luminous function is about 3-6 hours when the battery capacity is 100% (related to luminous brightness). Turn off the light for about 300 hours.

Basic parameters: (part of the parameters are objective factors will vary).

Working Voltage:	3.0V~4.2V	Working Current:	3.0mA
Working Time:	≥80 Hours	Low Voltage Alert:	3.0~3.3V
Sleeping Current:	0.3mA	Battery Standby Time:	100 Days
Battery Capacity:	≥ 150mAh	Keystrokes:	50g~70g
Keyboard Lifetime:	300 Million Times	Charge Input:	5V --- 1A
Connect Distance:	10m	Charging Time:	2~3 Hours
Charging Current:	200mA	Awaken Time:	2~3 Seconds
Charging Port:	Micro USB (or Type-C)	Working Temperatur:	-10°C~+55°C
Matching Password:	No		

Maintenance and warning:

- * Do not squeeze or twist, clap the keyboard.
- * Do not scan the microwave and get away from the magnetic field.
- * Away from the liquid and used in a dry environment.
- * Clean the keyboard with soft cloth, do not turn off the power for a long time.
- * Other routine maintenance of electronic products.

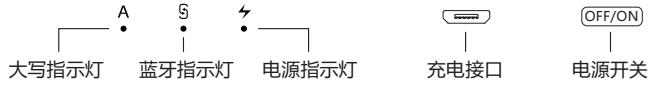
Common connection Troubleshooting:

- * Make sure the power is turned on and the battery is sufficient.
- * Make sure that the keyboard is within the range of working distance.
- * Make sure that the Wireless related function of the device has been opened.
- * Make sure that the keyboard and the device have been paired.
- * Clear device pairing record and turn off Wireless function; re match.
- * Please do not connect multiple Bluetooth keyboards at the same time; if necessary, please connect one by one.

** This product will not be updated in time for continuous product improvement. If there is any discrepancy, please refer to physical products.

键盘使用说明

** 使用前请仔细阅读操作说明 **



键盘连接操作：

- 1、开启电源，绿色指示灯点亮 1 秒（若指示为红色请及时充电）；
按下一键 Fn+C/ 1 秒蓝牙指示灯闪烁进入配对状态，有效时间约 120 秒；
开启外部设备的蓝牙搜索功能，点击搜索到的 “Wireless Keyboard”；
配对成功后指示灯熄灭，即可使用键盘。
- 2、如果在 10 分钟内没有操作，键盘将进入休眠状态，按任意键等待 2~3 秒即可唤醒。

留意：请根据键盘实际功能，查阅如下说明：**（部分产品支持）**

请对应设备的系统选择输入程序，按下 “FN+And/ Win/ IOS” 保持 1 秒进行切换，切换成功蓝牙灯会点亮指示。

Fn+And 转换到 Android；

Fn+Win 转换到 Windows；

Fn+IOS 转换到 IOS。

断开键盘连接：

- * 若要断开键盘与设备的连接，请在设备中清除配对的信息，或直接关闭键盘电源。

电量指示：

- * 若电源指示灯为红色慢闪，表示电池电量偏低，请及时进行充电，充电时红灯长亮；当指示灯为绿色时表示充电完成，请断开充电电源确保安全。

功能键：当按键有多个字符或功能图标时，请按 Fn 或者 Fn+Shift 组合使用。

注意：

基于操作系统的开源性，不同品牌设备可能存在部分功能键与表格所示不一致或者无反应。

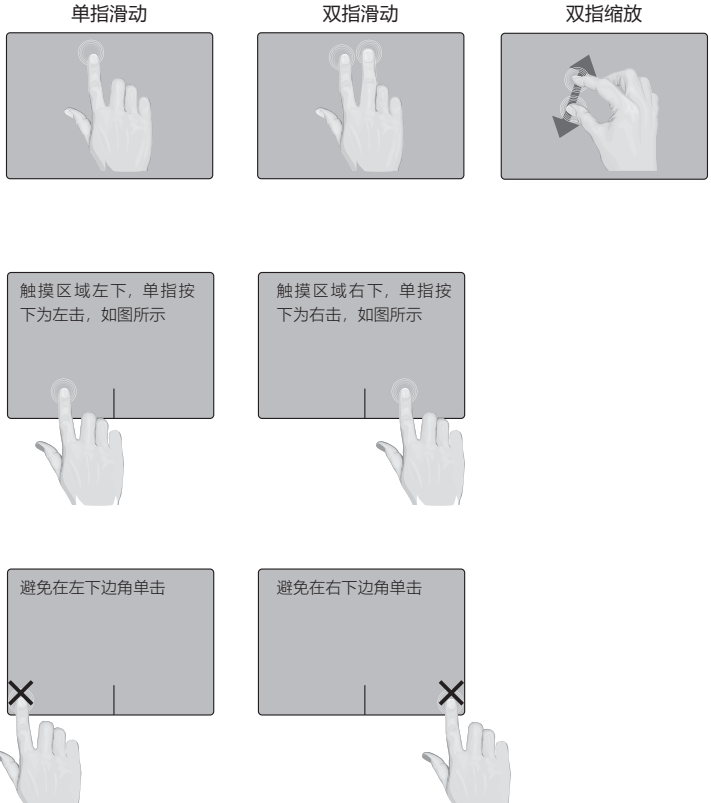
非常规字符在 IOS 系统请配合 Alt 或 Alt+Shift 使用，在 WIN/AND 系统请配合 Alt Gr 使用。

	WINDOWS	ANDROID	IOS
	主界面	主界面	主界面
	搜索	搜索	搜索
	邮件	邮件	虚拟键盘
	浏览器	浏览器	切换输入法
	截屏	截屏	截屏
	减少亮度	减小亮度	减小亮度
	增加亮度	增加亮度	增加亮度
	前一首	前一首	前一首
	播放暂停	播放暂停	播放暂停
	后一首	后一首	后一首
	静音	静音	静音
	减小音量	减小音量	减小音量
	增加音量	增加音量	增加音量
	锁屏	锁屏	锁屏
	返回	返回	撤消输入
	Windows	功能键	CMD=Command
	停用滑鼠	停用滑鼠	停用滑鼠

请根据所购产品实际功能，查阅如下说明：**（部分产品支持）**

触摸滑鼠：

适配不同的操作系统，手势命令会有所差别，请以产品实际情况为准。



有此图标表示键盘支持发光功能：**（部分产品支持）**

按下此图标键，可以（开启 / 调节 / 关闭）键盘的发光功能。

如果在关闭状态，按一下为开启发光，再按一下亮度加强 30%，再按一下亮度再次加强 30%，再次按下即可关闭发光；依次循环。

FN+ 可以调节发光颜色，依次在不同的颜色之间循环切换。

注意：

如果发光无法点亮，或在点亮后即刻关闭，请及时充电；电池容量低于 20% 时，键盘会强制关闭此功能。

特别说明：

键盘有发光功能的电池使用时间，电池容量为 100% 时，开启发光工作时间约为 3~6 小时（与发光亮度有关）；关闭发光工作时间约为 300 小时。

基本参数：（部分参数存在客观因素会有所差异）

工作电压：	3.0V~4.2V	工作电流：	≤3.0mA
工作时长：	≥80小时	低电报警：	3.0~3.3V
休眠电流：	≤0.3mA	待机时长：	≥100天
电池容量：	≥150mAh	按键力度：	50g~70g
按键寿命：	300万次	充电输入：	5V --- 1A
连接距离：	≤10m	充电时长：	2-3小时
充电电流：	≤200mA	唤醒时长：	2~3秒
充电接口：	MicroUSB (TYPE-C)	工作温度：	-10℃~-+55℃
配对密码：	无		

维护与警告：

- * 不要挤压或扭曲、拍打键盘。
- * 不要进行微波扫描，远离磁场。
- * 远离液体，并在干燥环境中使用。
- * 用软布清洁键盘，长期不用请关闭电源。
- * 不要随意丢弃键盘，请按类别回收放置。

常见连接故障排除：

- * 确保电源已开启，且电池电量充足。
- * 如果多次无法充电，请尝试更换充电线。
- * 确保键盘在工作距离范围内。
- * 确保设备蓝牙相关功能已开启。
- * 确保键盘和设备已经配对连接。
- * 清除设备的配对记录，并关闭蓝牙功能；再重新配对，必要时重启设备。
- * 请不要同时配对连接多个蓝牙键盘；如有需要请逐个连接。

** 产品持续改进中，此说明书不一定会及时更新，如有差异，请以实物产品为准 **

This device complies with Part 15 of the FCC Rules. Operation is subject to the following two conditions: (1) this device may not cause harmful interference, and (2) this device must accept any interference received, including interference that may cause undesired operation

NOTE: This equipment has been tested and found to comply with the limits for a Class B digital device, pursuant to Part 15 of the FCC Rules. These limits are designed to provide reasonable protection against harmful interference in a residential installation. This equipment generates, uses and can radiate radio frequency energy and, if not installed and used in accordance with the instructions, may cause harmful interference to radio communications. However, there is no guarantee that interference will not occur in a particular installation.

If this equipment does cause harmful interference to radio or television reception, which can be determined by turning the equipment off and on, the user is encouraged to try to correct the interference by one or more of the following measures:

- Reorient or relocate the receiving antenna.
- Increase the separation between the equipment and receiver.
- Connect the equipment into an outlet on a circuit different from that to which the receiver is connected.
- Consult the dealer or an experienced radio/TV technician for help.

Warning: changes or modifications not expressly approved by the party responsible for compliance could void the user's authority to operate the equipment