

LIVING.AI



AIBI Pocket Pet

Product manual

Introduction of AIBI

AIBI is definitely a milestone product, he is the world's smallest AI robot. He is only the size of a matchbox but has powerful interactive functions.

You can wear AIBI on your body without any burden. Imagine how cool it would be to wear a robot, which also opens up a new chapter in wearable devices.

From now on, you can be inseparable from your robot companions. Take AIBI to work, exercise, and travel, and never be alone again.

The manual only provides a brief introduction. For more usage methods, please refer to the video tutorial.

As AIBI is a brand new product, we will continue to provide OTA updates to add features to AIBI.



Video tutorials

Get to know AIBI



What's included



AIBI



Pocket



Type C Cable



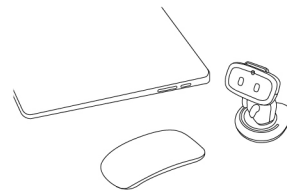
Magnetic panel



Charging Base

Preparation for AIBI's arrival

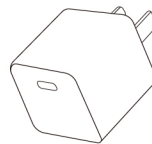
A clean desktop, AIBI is very small and only requires a little space.



2.4G Wi-Fi with good signal. 5G Wi-Fi is not supported.



A Type C port adapter, any brand is ok.



Install AIBI app from App store or Google Play.



AIBI in his new home



Put AIBI on the base through magnetic guidance to power AIBI up.



Connect AIBI with the App and config wifi for AIBI.



AIBI adapts to the new environments.

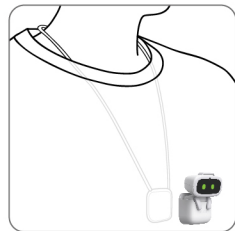


Let AIBI have a rest.

How to wear AIBI



Put AIBI in the pocket

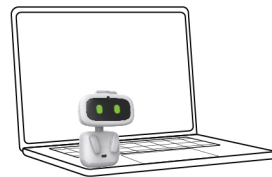


Place the magnetic panel on the inside of the clothes, then attach AIBI pocket on the outside of the clothes.

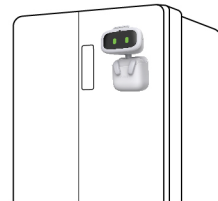
WARNING: If you have a Pacemaker, DO NOT use the magnetic panel.

Placing AIBI in different places

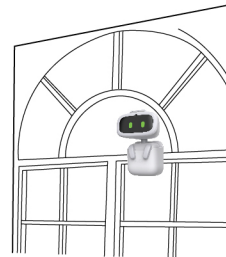
AIBI is equipped with many magnets. You can place AIBI in any metal or magnetic place.



Notebook



Refrigerator

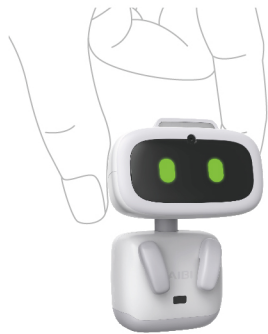


Window

Some interactions with AIBI



Touch AIBI's head



Pick AIBI up



Tap on feeding



Shake AIBI to make him dizzy



Hold AIBI upside down



Double tap

Call AIBI his name

Try calling AIBI by his name to wake him up.

Try to wake AIBI up, while he is charging, playing, sleeping.

Gradually master the skill of waking up him until he responds every time you call him AIBI.

" AIBI "



Introduce yourself to AIBI

You can build a relationship with AIBI by saying hello.

You can say:

"AIBI, nice to meet you".

After the first greeting, if AIBI is ready to know you, he will ask your name, You can answer like this:

"AIBI, my name is Andy".

If AIBI is not ready to know you, don't worry, you can spend more time playing with him.



Voice commands

You can use voice to interact with AIBI, including commands and some simple questions. For more voice commands, please refer to www.living.ai/aibi-voice-commands



AIBI, what's the weather



AIBI, set a timer



AIBI, take a photo



Singing and dancing



Tarot card divination



Imitate animals

Ask AIBI to show skills

AIBI has hundreds of skills. If you don't know how to use, you can try the universal command "AIBI, what can you do" or "AIBI, show your ability".

Enjoy music with AIBI

AIBI is a super singer and dancer. He can sing and dance by himself, or dance to external music.

You can say:

AIBI, music!

AIBI, dance for me!

AIBI will sing and dance by himself.



You can also say:

AIBI, listen to the music.

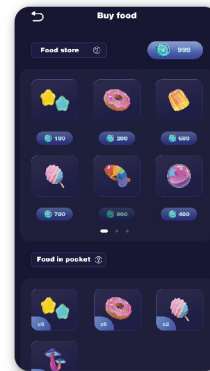
Then you can play the music on your phone.
AIBI will dance following the beat.

App features

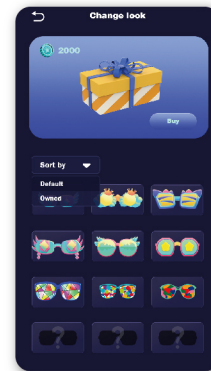
You can also interact with AIBI through the app.



Play chess with AIBI



Feed AIBI



Dress up AIBI

Add friends through AIBI

Just put AIBI back to back, AIBI will automatically add friends and exchange owner's information.



Wireless Star Light

Press the button to activate the new star light.

Then you can ask AIBI "turn on the light".



Only unused lights need to be activated.



Support up to 4 lights. RGB colors.

FCC Caution:

This device complies with part 15 of the FCC Rules. Operation is subject to the following two conditions: (1) This device may not cause harmful interference, and (2) this device must accept any interference received, including interference that may cause undesired operation.

Any Changes or modifications not expressly approved by the party responsible for compliance could void the user's authority to operate the equipment.

Note: This equipment has been tested and found to comply with the limits for a Class B digital device, pursuant to part 15 of the FCC Rules. These limits are designed to provide reasonable protection against harmful interference in a residential installation. This equipment generates uses and can radiate radio frequency energy and, if not installed and used in accordance with the instructions, may cause harmful interference to radio communications. However, there is no guarantee that interference will not occur in a particular installation. If this equipment does cause harmful interference to radio or television reception, which can be determined by turning the equipment off and on, the user is encouraged to try to correct the interference by one or more of the following measures:

- Reorient or relocate the receiving antenna.
- Increase the separation between the equipment and receiver.
- Connect the equipment into an outlet on a circuit different from that to which the receiver is connected.
- Consult the dealer or an experienced radio/TV technician for help.

The device has been evaluated to meet general RF exposure requirement. The device can be used in portable exposure condition without restriction.



AIBI Pocket Pet