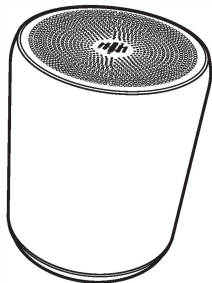


PURE-HYPR AUDIO
CR-100
USER MANUAL



5W Bluetooth wireless speaker

Product Specification

Dimensions	48x48x57 mm
Speaker Output	5W each
Frequency Response	90-20KHz
Battery Charging	5V (USB)
Playback Time	Up to 12 hours
Battery Charge Time	1 hour
Bluetooth	V5.0

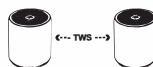
Included

- 1 USB to Dual USB C Charge cord
- 2 USB Wall Charger Input 100-240 V - 50-60 Hz 0.30 Output 5.0V — 1.55A
- 3 User Manual

01

Operating Instructions

1 TWS (True Wireless Stereo)



You can connect 2 CR-100 speakers for true wireless stereo, up to 30 feet apart depending on your room environment and local radio interference

- 1) Disconnect or disable the bluetooth connection from all other devices before pairing with another CR-100
- 2) Turn on the first speaker and confirm flashing blue light, Turn on the second speaker and then press and hold the power button down continuously until you hear the "pair" chime. One speaker will post a solid blue indicator light and the second speaker will be flashing.
- 3) Now turn on the Bluetooth function of your mobile device, you will find the "CR-100". Please connect it and from this moment you can play music via the true wireless function.
- 4) Power off second speaker to disconnect from true wireless

02

2 Bluetooth.

Press and hold button for 3 seconds to power "ON/OFF" choose wireless mode open on setting on your mobile device, and select "CR-100" while pairing is successful, you can play music.

3 Speakerphone.

Press button to answer an incoming call. Press button during the call to end it.

Bluetooth Connection

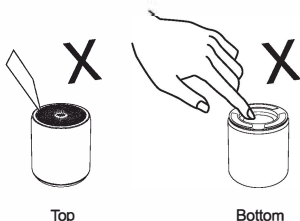
To connect the speaker to a compatible Bluetooth device, please turn on the Bluetooth of the device (smartphone, tablet, etc), then search for the compatible device. Find this speaker and pair with the CR-100.

Enter the password "0000" if you need a password for pairing.

Once paired and connected, all audio from the device will now play over the CR-100 Speaker.

03

Warnings



Top

Bottom



Warnings:

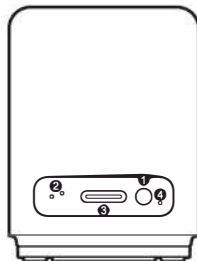
Keep away from products sensitive to magnetic items (because it is magnetic).

DO NOT EXPOSE TO FIRE OR HIGH TEMPERATURES.

04

Ports and Indicator

- 1 **Button:** Press to turn On/Off Press and hold for Bluetooth pairing.
- 2 **Microphone**
- 3 **USB C Port:** 5V/500mA~1A only
- 4 **Indicator and Status Light**



05

Troubleshooting

Don't attempt to repair the speaker to prevent electric shock or further damaging it. Please refer to the following solutions if you have a problem as follows:

- 1) No Sound from the speaker?
 - 1) Check whether the speaker is on.
 - 2) Confirm the CR-100 is connected via bluetooth to the selected device.
 - 3) Confirm the CR-100 is in range of the selected bluetooth device.
- 2) What to do when it has distortion of sound at the high volume.
 - 1) Confirm that the battery has sufficient charge
 - 2) Move the CR-100 closer to the paired bluetooth device.

Safety regulations.

- 1) Read and observe the safety regulations first.
- 2) Any cut surface, uneven surface, metal parts or accessories may cause injury. Be careful with use.

06

- 3) The speaker is not a toy and is not edible. Keep out of reach of small children.

- 4) Do not refit, replace or disassemble any portion of this device. Incorrect handling may result in a short circuit, product damage and possibly even fire.

- 5) Disassembled, damaged or modified product will not be covered under any warranty claim.

- 6) Do not use any chemicals or high pressure to clean the product.

- 7) Constant full volume can place undue strain, reducing the lifecycle of the speaker components.

- 8) Do not drop, stack or use mechanical pressure on any portion of this device.

- 9) This device may cause disturbance on other sensitive electronic devices nearby.

- 10) Stop using at once if any abnormal symptoms occur while in use.

- 11) DO NOT EXPOSE TO FIRE OR HIGH TEMPERATURES.

07

This device complies with Part 15 of the FCC Rules. Operation is subject to the following two conditions: (1) this device may not cause harmful interference, and (2) this device must accept any interference received, including interference that may cause undesired operation.

Changes or modifications to this unit not expressly approved by the party responsible for compliance could void the user's authority to operate the equipment.

NOTE: This equipment has been tested and found to comply with the limits for a Class B digital device, pursuant to Part 15 of the FCC Rules. These limits are designed to provide reasonable protection against harmful interference in a residential installation. This equipment generates, uses and can radiate radio frequency energy and, if not installed and used in accordance with the instructions, may cause harmful interference to radio communications. However, there is no guarantee that interference will not occur in a particular installation. If this equipment does cause harmful interference to radio or television reception, which can be determined by turning the equipment off and on, the user is encouraged to try to correct the interference by one or more of the following measures:

- Reorient or relocate the receiving antenna.
- Increase the separation between the equipment and receiver.
- Connect the equipment into an outlet on a circuit different from that to which the receiver is connected.
- Consult the dealer or an experienced radio/TV technician for help.

This device and its antenna(s) must not be co-located or operation in conjunction with any other antenna or transmitter.

Radiation Exposure Statement

The device has been evaluated to meet general RF exposure requirement. in portable exposure condition without restriction.