

P1

Like our product?
Share your experience with our customers on your page!
Having trouble?
Contact us: service@bobbot.net

What's in the box

*Subwoofer
*Wireless Center Satellite Speakers
*Wireless Connection FL & FR & SL & SR Satellite Speakers
*TV ARC Cable
*Optical Audio Cable
*Remote Control
*FM Antenna Cable
*User Manual
*Mounting Brackets and Screws

1PC
1PC
4PCS
1PC
1PC
1PC
1PC
1PC
1SET

IMPORTANT SAFETY INSTRUCTIONS



TO REDUCE THE RISK OF ELECTRICAL SHOCK, DO NOT REMOVE AMPLIFIER PLATE. NO USER SERVICEABLE PARTS INSIDE. WE RECOMMEND TAKING THE UNIT TO A QUALIFIED SERVICE TECHNICIAN FOR ANY REPAIRS.

Read the following safety instructions before operating your home theater system.

- Do not place these speakers on an unstable surface. The speaker may fall over causing serious injury to a child or adult and serious damage to the unit.
- Do not use these speakers near water or expose them to rain or moisture.
- The speakers should be situated away from heat sources such as radiators, heat registers, stoves, or other devices that produce heat.
- To reduce the risk of electric shock or component damage, unplug the power before moving your speakers or connecting other components to your device.
- Clean only with a soft dry cloth. Unplug the main unit from the wall outlet before cleaning.

CAUTION: Always use a power outlet that is properly grounded.

P2

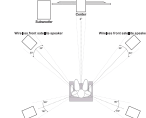
BEST PLACEMENT FOR 5.1 Home Theater System

1. Most people place the subwoofer in the front of the room, near the sound input source for ease of connection. But since bass frequencies are omnidirectional the subwoofer can be placed anywhere. Try placing it near a wall or in a corner for increased bass.

2. The center channel speaker should be placed directly in front of the listening position above or below the sound input source. If possible, lift it as necessary to direct the sound at ear level.

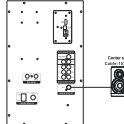
3. Mount the front speakers on the wall, directly to the left and right of the center channel speaker. Angle them towards the listening position. Preferably, the tweeters should be at ear level.

4. Mount the satellite speakers on the wall, slightly behind the listening position, about 1 to 2 feet above ear level. If only distance isn't possible place them to the rear of the listening position and angle them forward.



SET UP CENTER SATELLITE SPEAKERS

Place speakers in the ideal position using the built-in electric cable connect the center satellite speakers to the "CEN" of the Audio Output RCA socket on the subwoofer unit.



P3

SET UP WIRELESS SATELLITE SPEAKERS

Front & Rear satellite speakers (FL/FR/SL/SR) with a wireless connection that you can place in any corner within 12 feet from the subwoofer.

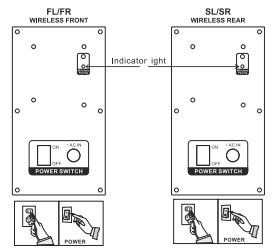
By default, pairing is successful when leaving the factory (after the subwoofer and rear satellite units are powered on, the pairing light will solid blue). If the pairing is not successful or disconnected midway, please follow the steps below to re-pair.

1. Connect the subwoofer and FL/FR/SL/SR satellite unit to the power supply and turn on the power switch.

2. Long press (5s) the pairing button on the subwoofer to enter pairing mode (Blue Light Fast Flashing) then immediately long press (5s) the FL/FR/SL/SR satellite pairing button to start pairing (Blue Light Fast Flashing).

3. The indicator light on the back panel is solid blue when pairing successfully.

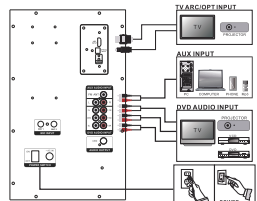
NOTE: 1. Do not perform any other operations during pairing.
2. Exit pairing mode after about 1 minutes.



P4

SYSTEM CONNECTION DIAGRAM

Verify that your device can be used to input sound from audio/video for other external sound source devices, and ensure your device have an available jack to match the appropriate port on the subwoofer.



Connect the wireless BT

- Make sure the wired center speaker have plugged in the available jack on the back of subwoofer, wireless rear speaker and wireless front speaker have pairing successfully and the power is ON.
- Press the "BT" button on the subwoofer.
- OR press "BT" on the remote to start this system.
- Press the "INPUT" button on the subwoofer to switch mode "BT", which is showing in the LED display of the subwoofer.
- OR press the "BT" button on the remote.
- Search BT device with name "Bobbot KW88" and tap to connect.

Note: If your BT device is below 2.0 version, please input password "0000" when connecting.

P5

FRONT PANEL OF SUBWOOFER

BT: Press the "BT" button to start the system.

INPUT: Switch from BT/TV/ARC/OPT/VIDEO/FM/USB/SD/AUX mode.

5.12, 1: 5.1 surround and 2.1 mode

AUTO: In FM mode, automatically search for stations and save the radio stations, and pause the music or stop searching for stations.

CH/PS: Play previous song in USB/SD mode. Previous station in FM mode.

CH/PS: Next song in USB/SD mode. Next station in FM mode.

LED Display: showing the choiced input mode, volume level and surround mode.

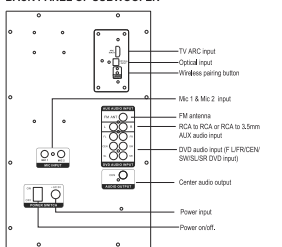
Volume: Turn the knob to control the volume

SD/MMC Card input: Insert your SD/MMC card with M3, M4 to play automatically. (support 4GB)

USB input: plug into your USB drive to play automatically. (support 4GB)

P6

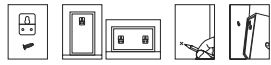
BACK PANEL OF SUBWOOFER



MOUNTING INSTRUCTIONS

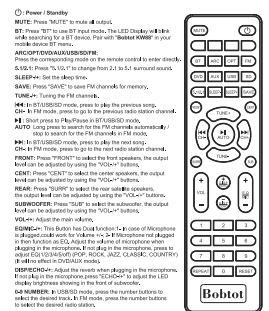
Before you begin please make sure you have the proper tools and necessary accessories. For this installation you will need the following items:

- mounting brackets and screws (included)
- wall hooks (optional, not included)
- center cable (built-in, included)
- optical cable (not included)
- optical cable (not included)



P7

REMOTE CONTROL FUNCTIONS



NOTE:

- Turn on the unit, please press the "Power" button before selecting the input mode.
- If the remote control does not work, please replace the batteries and try again.

P8

- Plug the TV ARC / Optical into the audio input on the back of the subwoofer, the other port plugs into the socket of your TV.
- Make sure the 5 satellite speakers have plugged into the audio output of the subwoofer and set in the "Power On" status.
- Press the "BT, BT" button on the subwoofer or press "BT" on the remote to start this system.
- Press the "INPUT" button on the subwoofer to switch mode "ARC/OPT", which is showing in the LED display of the subwoofer, or press the "ARC/OPT" button on the remote.
- TV Setting: Sound output - select your mode to "TV ARC / Optical"
- TV Setting: Expert Setting - Digital Output Audio Format Setting to "PCM".

Note:

For optical connections, please make sure the protective caps at the ends of the optical cable are removed before plugging it in.

Other System Connection

- For 5.1 surround sound, insert audio cables from your device into the corresponding DVD speaker sockets at the back of subwoofer. (FL/FR, CEN/SL, SL/SR input)
- For dimensional sound, you can insert the audio cable connected to the AUX port of your device into the back of subwoofer, or insert a USB flash drive into the USB socket at the front of the subwoofer, or insert an SD/MMC card into SD input at the front of subwoofer.
- For clear, stronger FM signal, insert white antenna cord into FM Antenna socket at the back of subwoofer. Press "FM" on the remote control to enter FM mode, and then press "AUTO/PS" to search the stations automatically and will save the FM station automatically.
- In FM mode, press "automatic station - searching, press "TUNE" to select a station you like.
- Support microphone, only plug into the MC1 & MC2 input and play it. Press "MIC+/MIC-" on the remote to control the mic volume. Press "ECHO+/ECHO-" on the remote to adjust the ECHO.

P9

How to use FM radio by Antenna

- Plug the white Antenna cable into the back of the subwoofer.
- Make sure the subwoofer and 5 satellite speakers are connected correctly and are powered "ON" status.
- Press the "BT, BT" button before selecting the mode.
- Press the "INPUT" button to switch mode to "FM" status, showing in the LED display of the subwoofer.
- Long press the "AUTO" button about 5 seconds, it will be automatically searching for radio stations.
- Press the "TUNE-TUNE" button to search for a station you like. Press the "CH-CH" button to select the broadcast channel you like. Press the "SAVE" button, it saves the radio channel, and you can use "good" shows in the subwoofer display.

Microphone for Karaoke

KW88 home theater systems support wireless or wired microphone by 1 or 2 mic jack together.

- Wireless microphone: plug the mic receiver into the mic jack of the subwoofer.
- Wired microphone: plug in and play it.
- Control the mic volume: press the "MIC+/MIC-" button by remote.
- Control the mic echo effect: press the "ECHO+/ECHO-" button by remote.

SPECIFICATIONS

Input voltage: AC 100-240V 50/60Hz
Nom frequency response: 20Hz-20KHz
System impedance: 8 Ω 3+3 Ω
Signal to noise ratio: 75dB
Subwoofer dimensions: W228xH403xD358mm
Center satellite speaker dimensions: W104xH180xD93mm
Front/LR satellite speaker dimensions: W104xH180xD93mm
Rear/LR satellite speaker dimensions: W104xH180xD93mm
Cable length/Center: 15T/48inch
Net weight: 22.33lb(10.14 Kg)

P10

Certification

FCC Warning

This device complies with part 15 of the FCC Rules. Operation is subject to the following two conditions:

- (1) This device may not cause harmful interference, and
- (2) This device must accept any interference received, including interference that may cause undesired operation.

Any changes or modifications not expressly approved by the party responsible for compliance could void the user's authority to operate the equipment.

Note: This equipment has been tested and found to comply with the limits for a Class B digital device, pursuant to part 15 of the FCC Rules. These limits are designed to provide reasonable protection against harmful interference in a residential installation. This equipment generates uses and can radiate radio frequency energy and, if not installed and used in accordance with the instructions, may cause harmful interference to radio communications. However, there is no guarantee that interference will not occur in a particular installation. If this equipment does cause harmful interference to radio or television reception, which can be determined by turning the equipment off and on, the user is encouraged to try to correct the interference by one or more of the following measures:

- Reorient or relocate the receiving antenna.
 - Increase the separation between the equipment and receiver.
 - Connect the equipment into an outlet on a circuit different from that to which the receiver is connected.
 - Consult the dealer or an experienced radio/TV technician for help.
- This equipment complies with FCC radiation exposure limits set forth for an uncontrolled environment. This equipment should be installed and operated with minimum distance 20cm between the radiator & your body.

P11

Need Help ?

Customer Care Guide

At our company, we strive to provide exceptional customer care to every one of our clients. We believe that building strong relationships with our customers is essential to the success of our business. To help us achieve this goal, we have put together the following customer care guide.

Time

We understand that our customers' time is valuable, so we will respond to any inquiries within 24 hours.

Feedback

We know that our customers are the heart of our business so we value your feedback. We encourage you to share your thoughts and ideas with us.

Solutions

If our customers encounter any issues, we will try our best to find a quick and efficient solution that meets your needs. Here at Bobbot, we take customer care very seriously. Our customers are our first priority, and we are committed to providing the highest quality service. If you have any questions or concerns, please don't hesitate to reach out to us. We will be happy to assist you.

Call or Message: +1 (888) 872-1718
Email: service@bobbot.net

bobbot.net

© BOBBOT / Features and specifications are subject to change and/or improvement without notice.

P12

说明: 尺寸: 140x215mm
材质: 128G铜版纸 四色双面印刷 6张装订本

说明: 尺寸: 140x215mm
材质: 128G铜版纸 四色双面印刷 6张装订本