

### Design Information

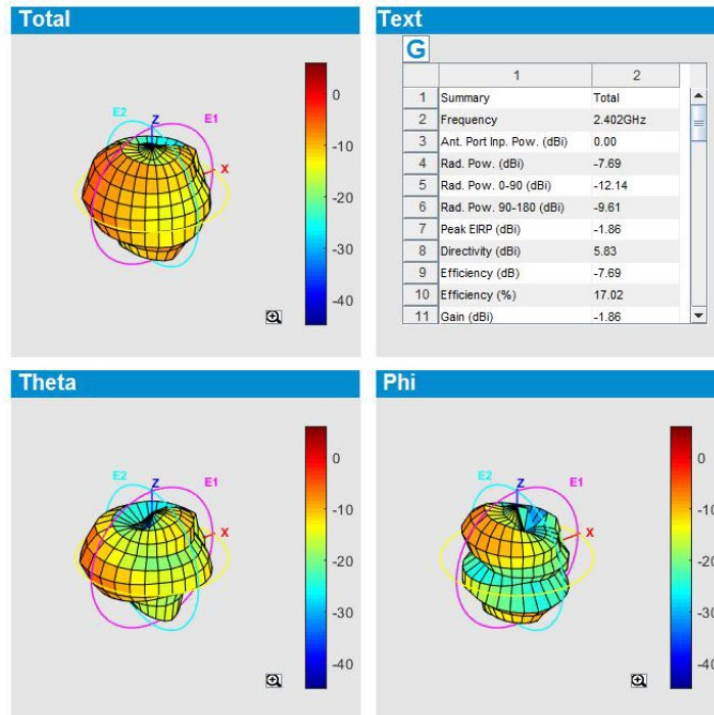
Working Frequency Range  
Rated RF Output Power  
Gain (dBi)  
Operating voltage  
Operation Temperature

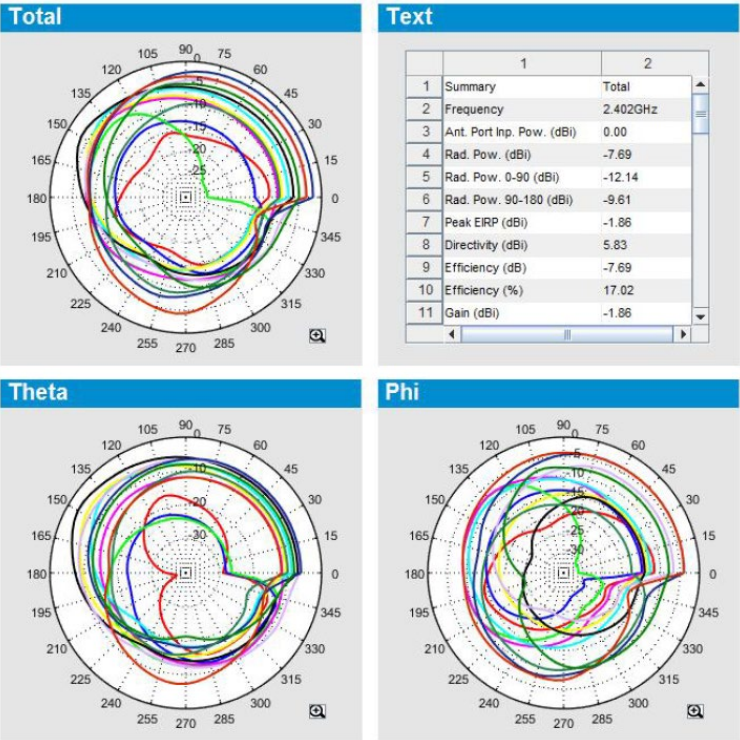
### Specification

2402 to 2480MHz  
less than 10 dBm EIRP  
-1.86 +0.86 dBi  
Nominal Voltage is 3.8 VDC  
+10°C to +50°C

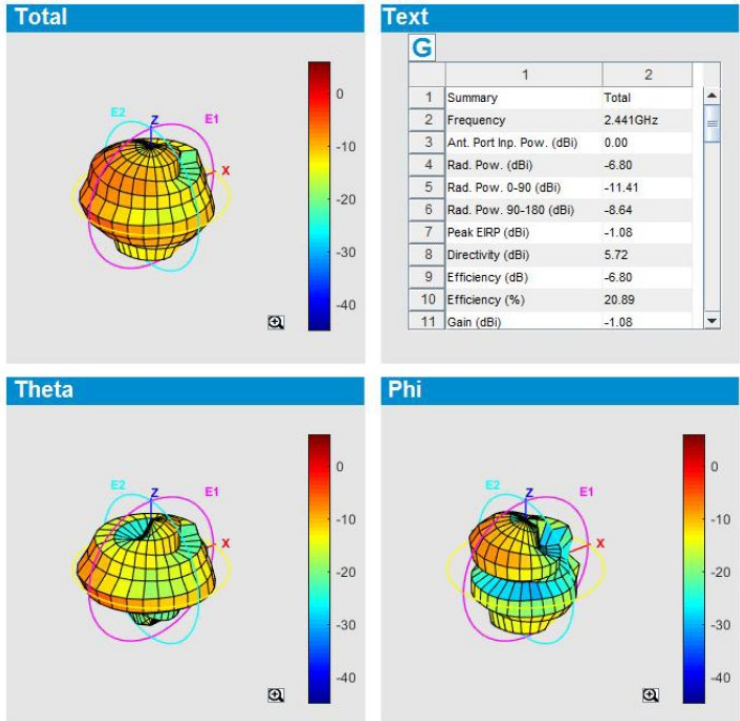
### Radiation Pattern

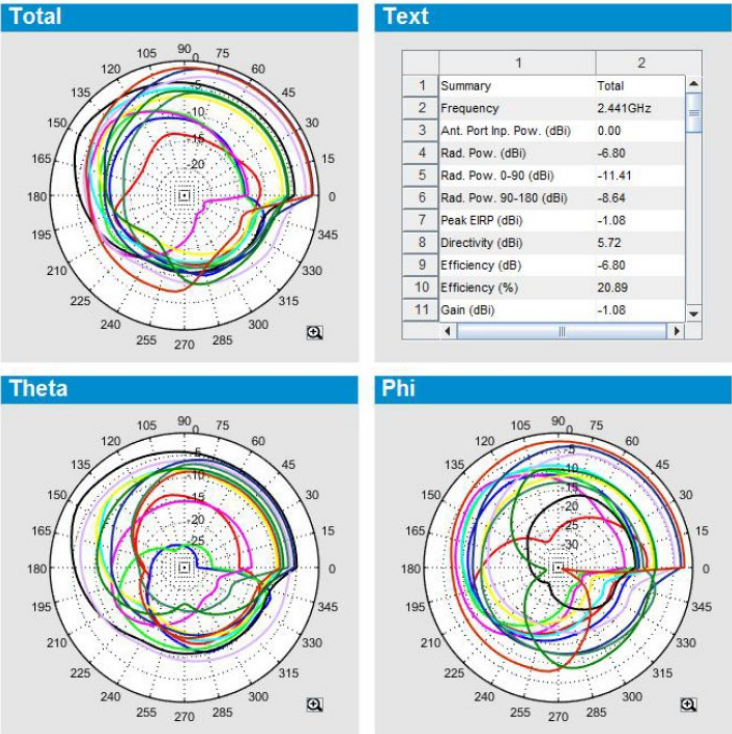
2.402G



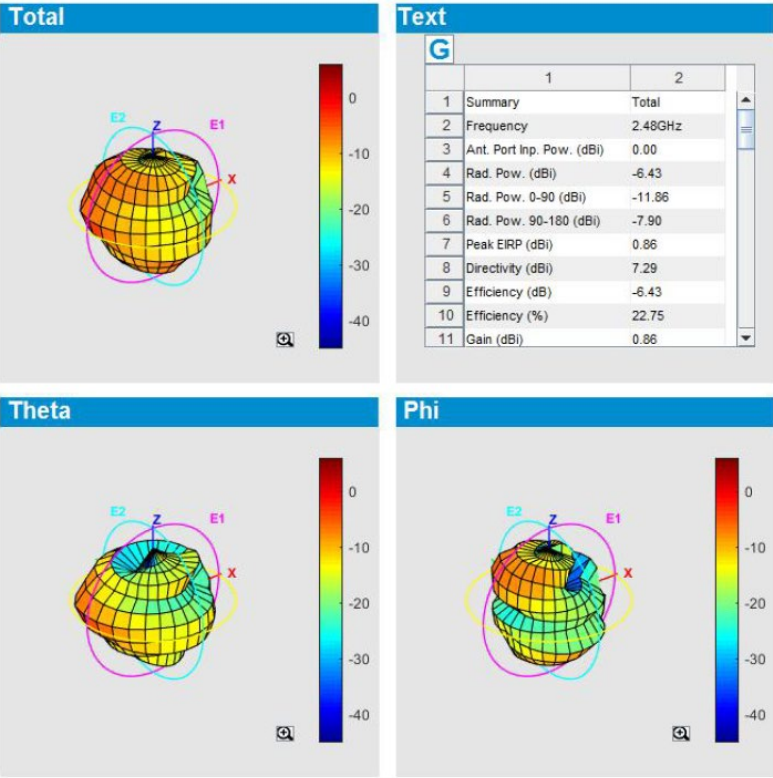


2.441G

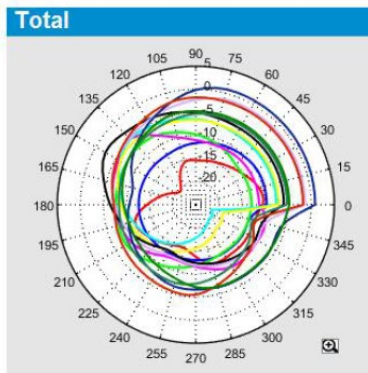




2.480G







### Text

	1	2
1 Summary	Total	
2 Frequency	2.48GHz	
3 Ant. Port Inp. Pow. (dB)	0.00	
4 Rad. Pow. (dBi)	-6.43	
5 Rad. Pow. 0-90 (dBi)	-11.86	
6 Rad. Pow. 90-180 (dBi)	-7.90	
7 Peak EIRP (dBi)	0.86	
8 Directivity (dBi)	7.29	
9 Efficiency (dB)	-6.43	
10 Efficiency (%)	22.75	
11 Gain (dBi)	0.86	

