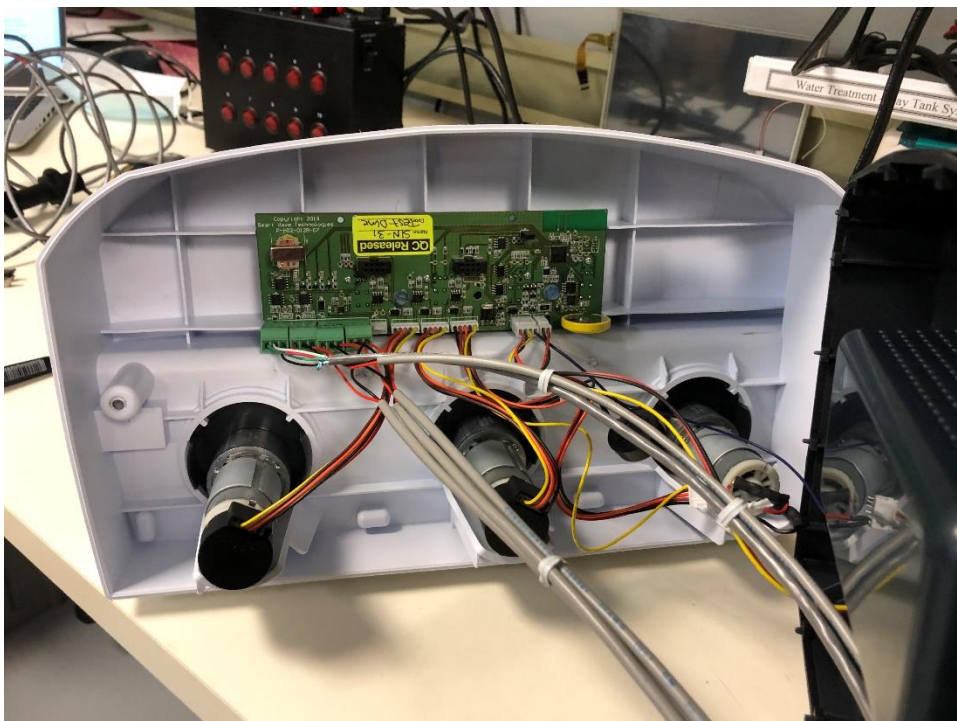
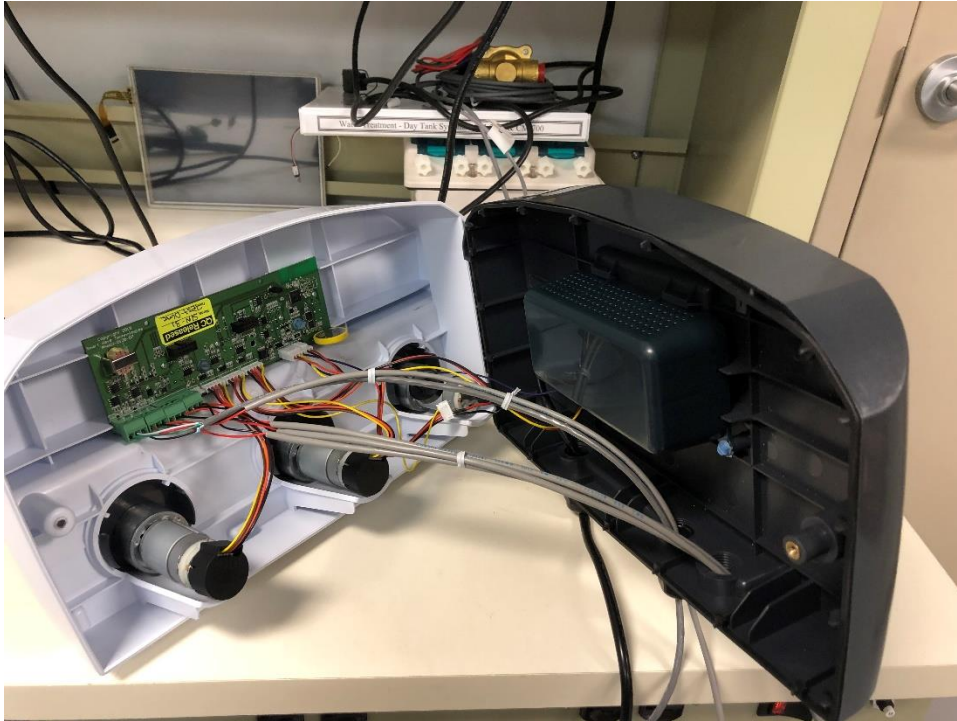
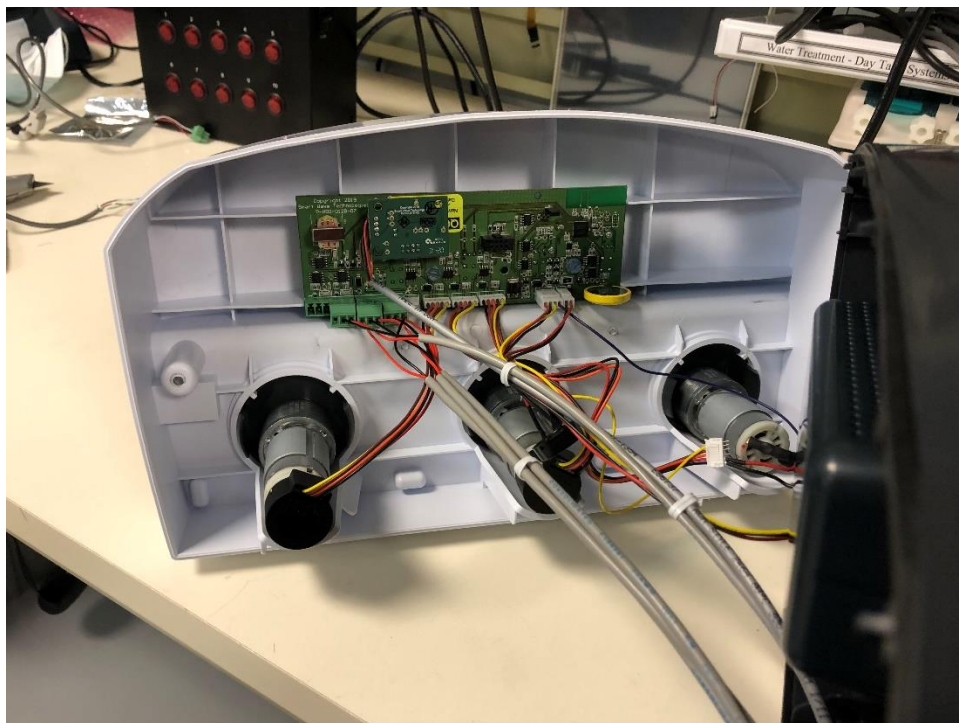
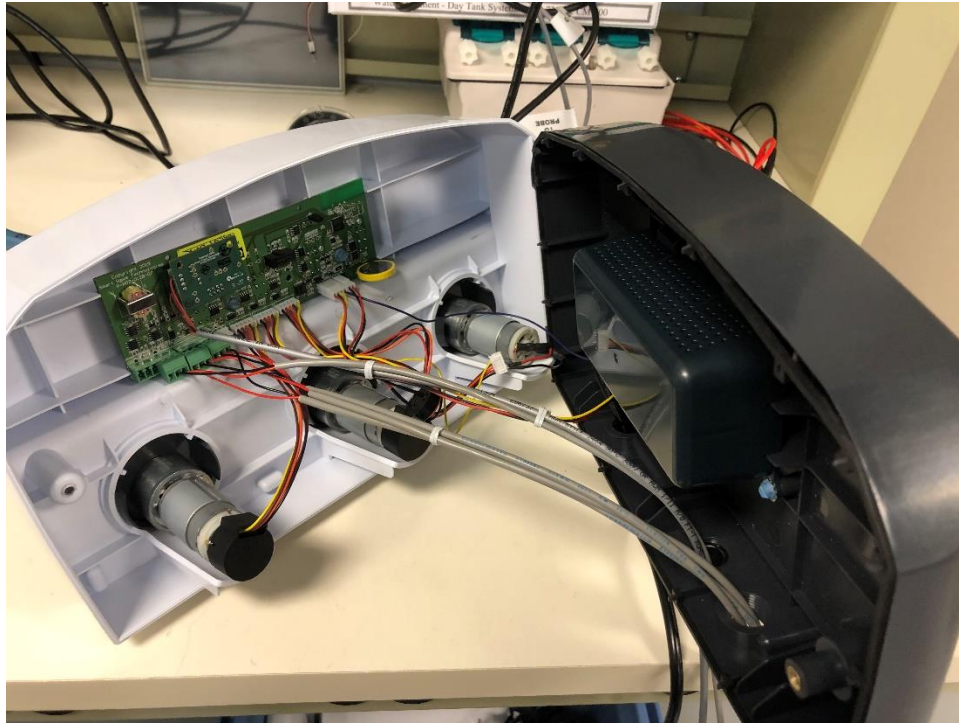


DMx EP6 – Housing Wiring Pictures

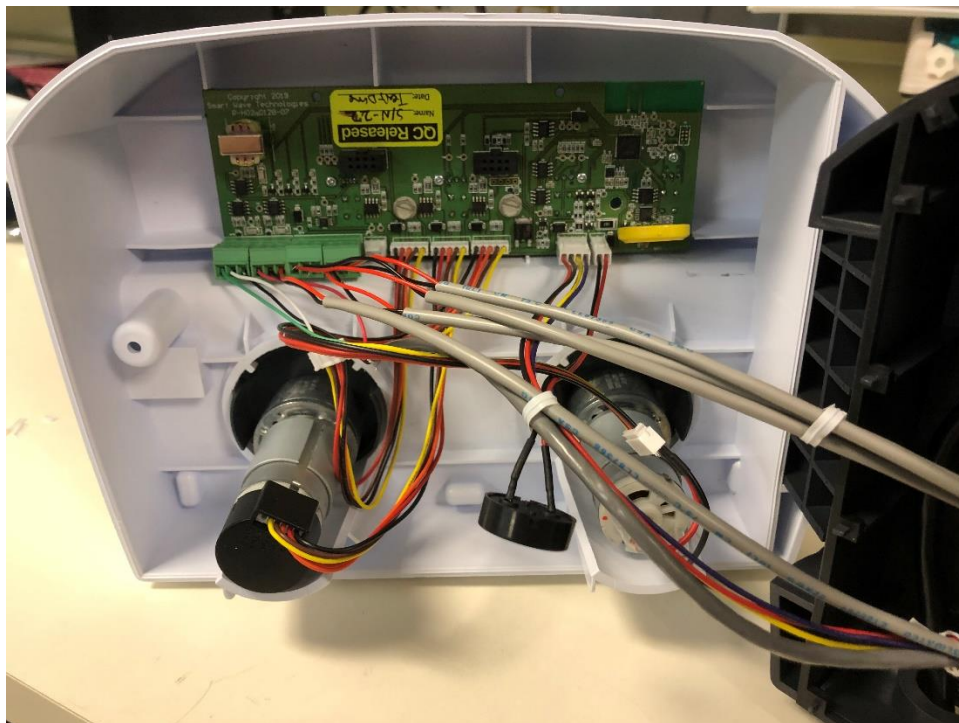
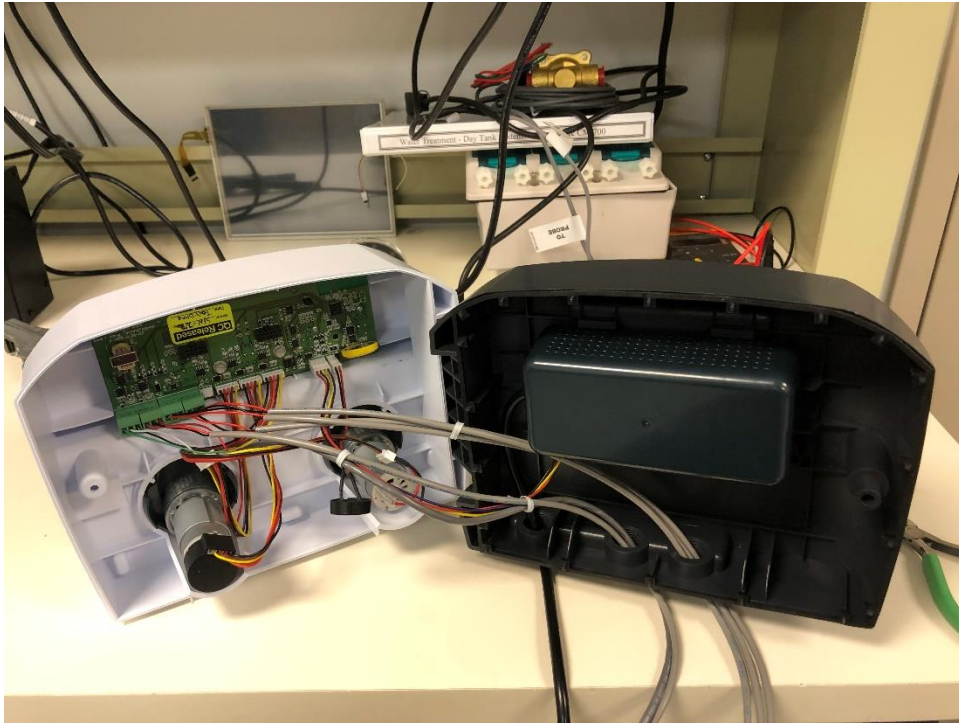
- 1) HYDDMXPE30CTBAR - 3 Product with temp-compensated conductivity probe, rinse temperature sensor, and the detergent, rinse, and sanitizer out of product alarms



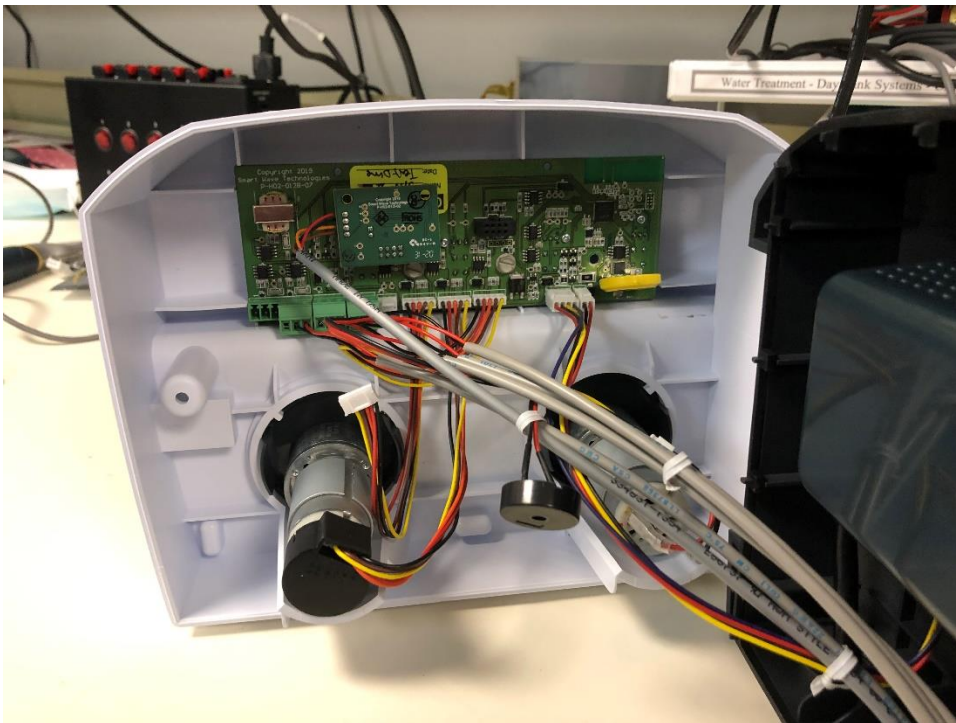
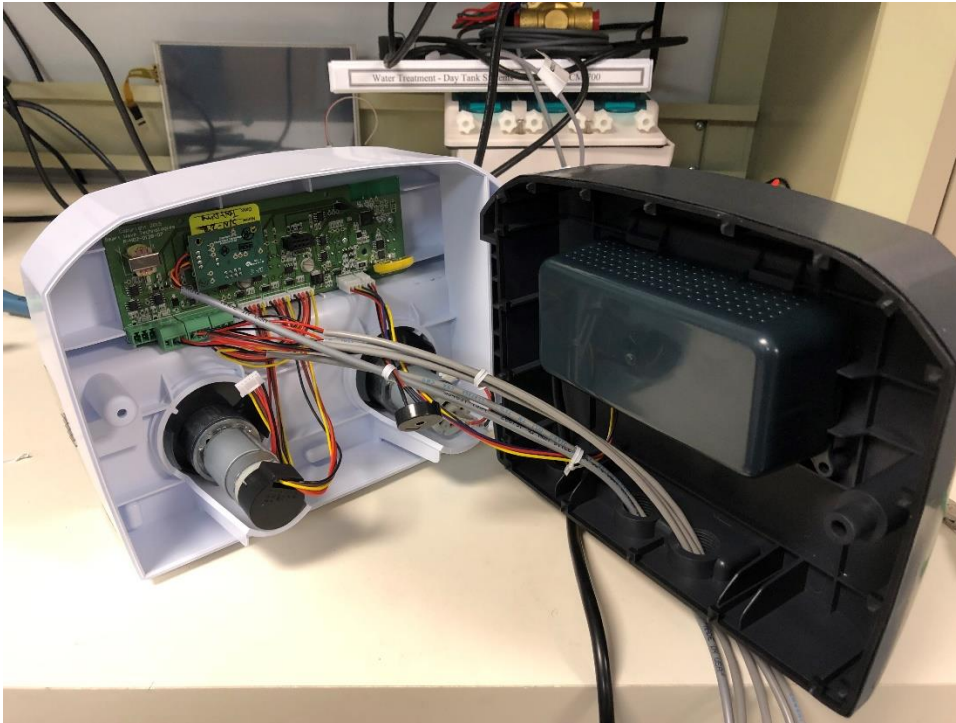
- 2) HYDDMXPE30ICBAR - 3 Product with temp-compensated inductive conductivity probe, rinse temperature sensor, and the detergent, rinse, and sanitizer out of product alarms



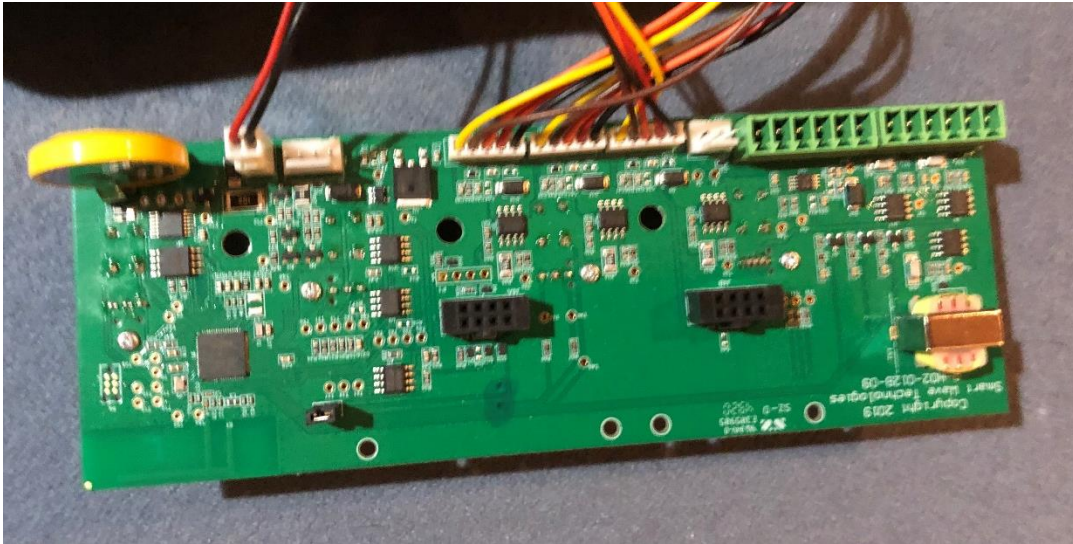
- 3) HYDDMXPE20CTBAR - 2 Product with temp-compensated conductivity probe, rinse temperature sensor, and the detergent and rinse out of product alarms



- 4) HYDDMXPE20ICBAR - 2 Product with temp-compensated inductive conductivity probe, rinse temperature sensor, and the detergent and rinse out of product alarms



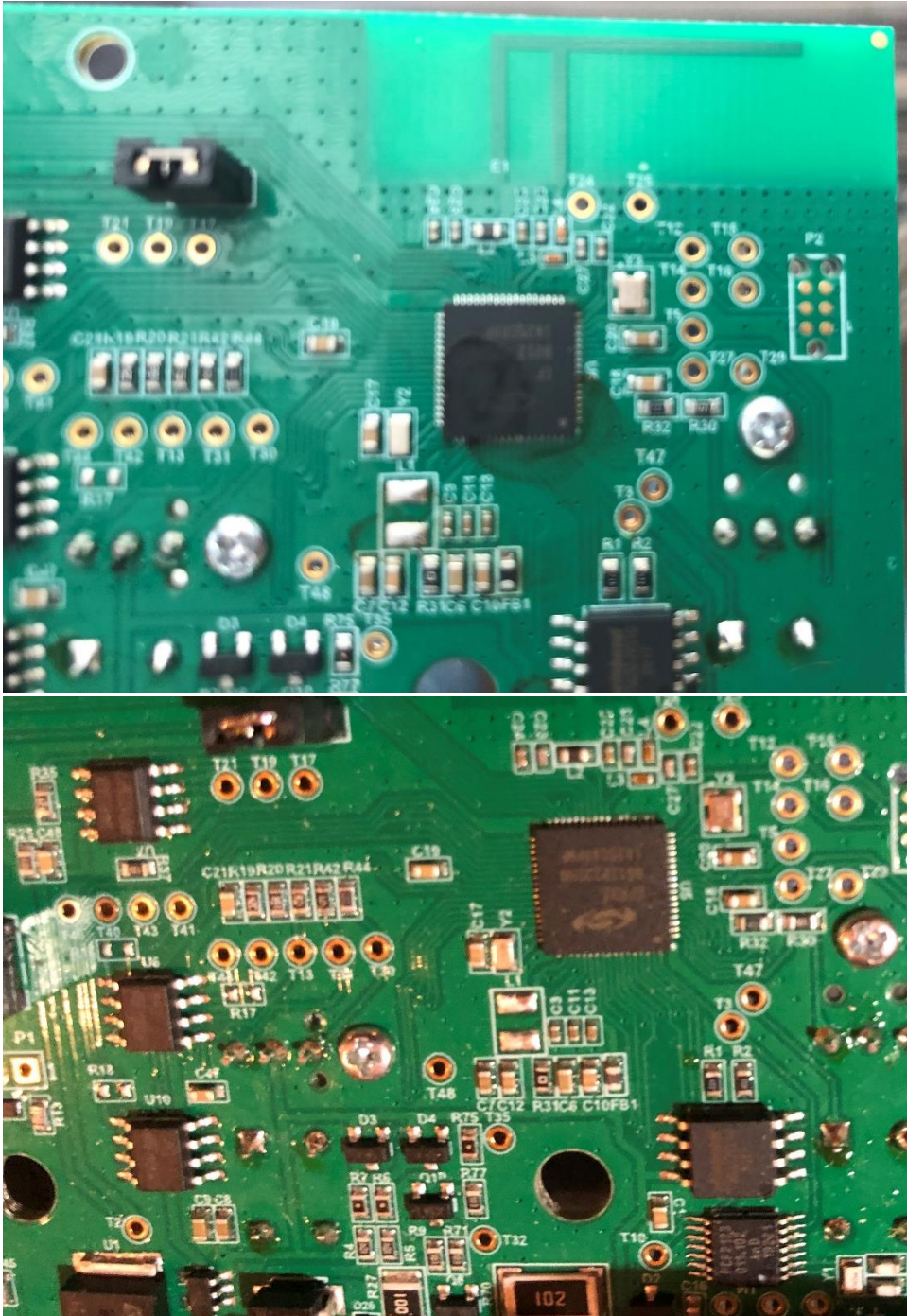
5) HYD90099986 Main Controller Board – Top View



6) HYD90099986 Main Controller Board –Bottom View



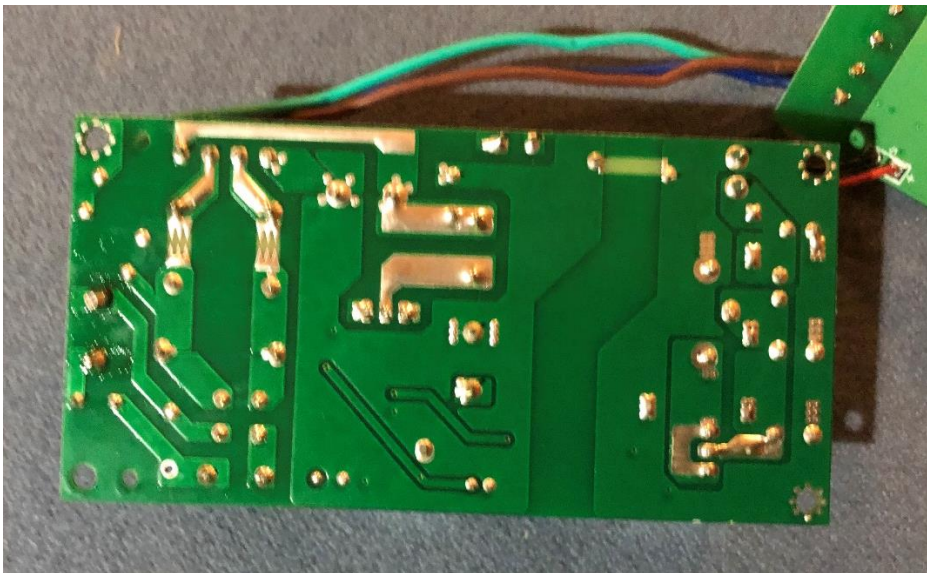
7) HYD90099986 Main Controller Board –Transmission Circuit, BT Micro, and Inverted F-Antenna



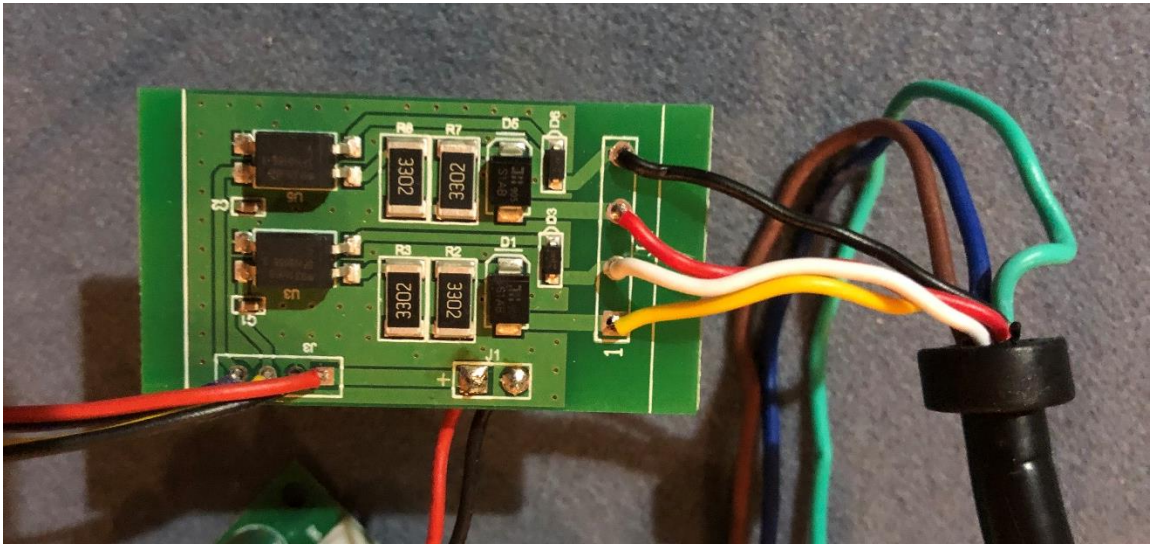
8) HYD90099989 Power Supply – Top View



9) HYD90099989 Power Supply – Bottom View



10) HYD90099989 Conditioning PCBA – Top View



11) HYD90099989 Conditioning PCBA – Bottom View



