

ZOHAN

EP02

WIRELESS EARPLUGS

PRODUCT AND ACCESSORIES

- A pair of Wireless EP02 Earplugs
- Portable charging case*1
- USB-C charging cable
- 3 pairs of foam eartips(Small,Medium,Large)
- 3 pairs of foam ear covers(Small,Medium,Large)
- User instructions*1

⚠ WARNING

Do Not disassemble, puncture, crush, heat or put into fire.
Severe swelling or immersion in water prohibits usage.

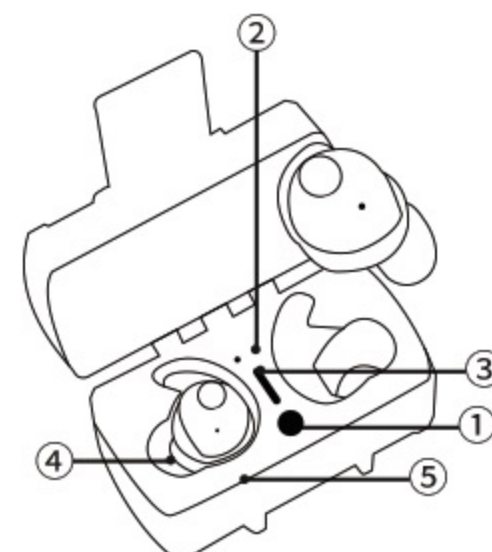
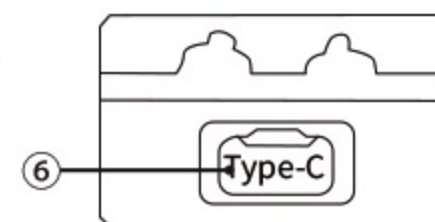
PRODUCT NOTE:

Operating temperature range: -20°C to 50°C
Storage temperature range: -20°C to 50°C
Charging temperature range: 0°C to 50°C

Adhere to these warnings to ensure safe and proper use of your electronic earbuds.

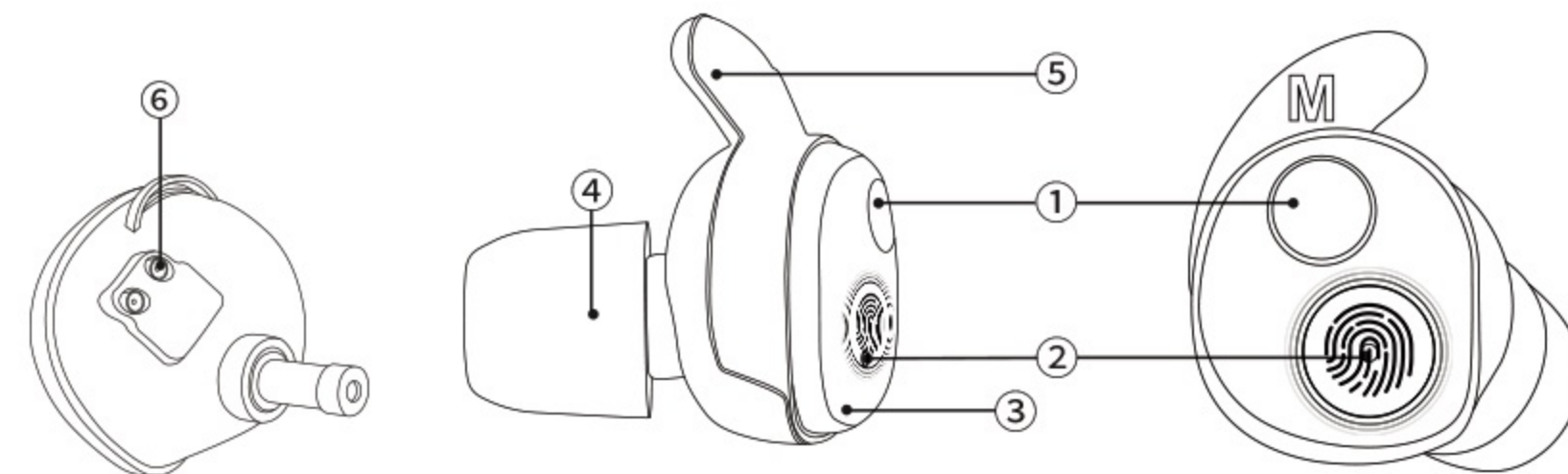
CHARGING CASE COMPONENTS

- ① Status button
- ② Indicator light1 (earpieces charge)
- ③ Indicator light2 (case charge)
- ④ Earpieces charging receptacle
- ⑤ Hanging holes
- ⑥ USB-C charging port



PRODUCT COMPONENT

- ① ("TSC" mode control) Sound Transparency Control Button
- ② Touchscreen Area (for Music and Call Management)
- ③ Sound Pickup Hole
- ④ Eartips
- ⑤ Ear covers
- ⑥ Charging Contacts



DESIGN CONCEPT

EP02 is an electronic hearing protection device specifically designed for shooting enthusiasts. As an upgraded version of EP01, it not only enhances situational awareness and communication capabilities in complex environments but also incorporates Bluetooth 5.3 functionality, allowing users to listen to music and answer phone calls. Featuring an in-ear electronic hearing protection design, this device is compact, lightweight, and easy to carry, while also providing exceptional comfort during use.

Main Function 1

Bluetooth earbuds offer seamless wireless connectivity, high-quality audio with noise cancellation for an immersive experience, touch controls for music and call management.

Main Function 2

Independent Volume Control: ZOHAN EP02 earplugs amplify ambient sound 4X, significantly enhancing situational awareness and communication. Users can adjust volume to hear external sounds clearly, like commands, conversations, or rustling animals.

Main Function 3

0.01s Impact Noise Suppression Tech: Quickly suppresses gunshot noise, protecting shooters' hearing instantly and reliably.

Main Function 4

USB-C Rechargeable Battery: In "TSC" mode, the rechargeable TYPE-C battery in the electronic earplugs lasts up to 13 hours, needing only 1.5 hours to fully charge the case for 3-4 refills, greatly extending usage during shooting training.

⚠ IMPORTANT INFORMATION

*Instructions for use: Please read carefully and adhere to the following instructions. Failure to comply with these instructions may result in personal injury or adversely affect performance.

1. Volume control: When using the electronic earplugs, avoid setting the volume too high as it may have a detrimental effect on hearing. It is recommended to adjust the volume moderately while being aware of the surrounding noise.

2. Usage duration: Prolonged and continuous use of the microphone electronic earplugs may lead to ear fatigue. It is advised to schedule their usage appropriately, allowing sufficient rest periods for the ears to prevent unnecessary discomfort.

3. Children's usage guidance: If children are using the microphone electronic earplugs, ensure that they are under the supervision and guidance of an adult. Strictly control the volume to protect the hearing health of children.

4. Proper storage: When not in use, store the microphone electronic earplugs in a dry and well-ventilated place, away from high temperatures, humidity, or corrosive substances.

-If you experience any ear discomfort or infection, please consult a relevant doctor before wearing the earplugs to prevent hearing damage.

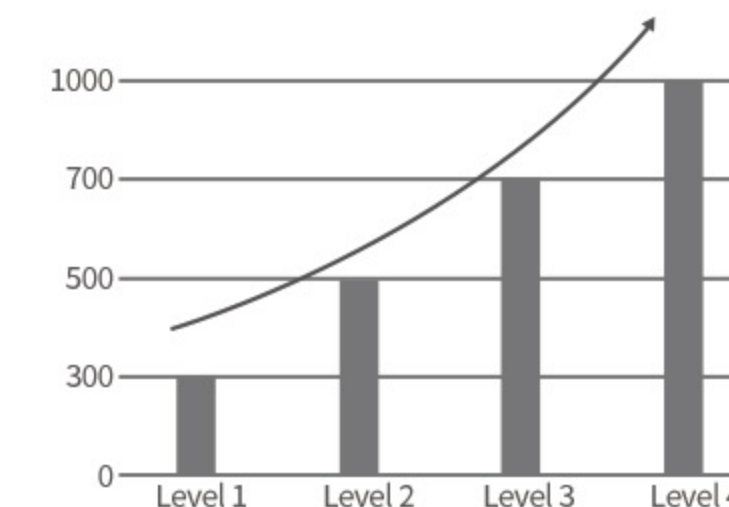
-For proper usage, refer to the user manual or contact ZOHAN's customer service via email.

INSTRUCTIONS FOR USE

Transparency Mode:

Control the transparency volume ("TSC" Mode) via Button ①. Upon power-on, the "TSC" Mode is automatically activated with the lowest level as the default setting. There are a total of four levels to choose from:

- Level 1: 300HZ
- Level 2: 500HZ
- Level 3: 700HZ
- Level 4: 1000HZ



Bluetooth Mode:

- a) Bluetooth Connection: Take out earbuds from the charging case, green light flashes slowly to enter pairing mode. Enable Bluetooth on device, find "EP02" and connect. Light turns off when connected.
- b) Play/Pause Music: Double-tap ②(touchscreen area)
- c) Answer/End a Call: Double-tap ②
- d) Reject a Call: Long press ②
- e) Answer a third-party call during an ongoing call: Triple-tap ② (the original call will be on hold)
- f) Reject a third-party call during an ongoing call: Long press ②

Wireless Electronic Earbuds

USER INSTRUCTIONS

**Tips:*

1. During an incoming call, the "TSC" function is unavailable and the control switches to call control. After the call ends, "TSC" returns to its original setting.
2. Currently, it is temporarily not possible to adjust music volume and call volume through the earbuds; only the volume of the "TSC" function can be controlled. Additionally, skipping to the previous or next track cannot be achieved via the earbuds.

Power On:

Method 1-Removed from the battery case

Method 2-Press and hold the ②(touchscreen area) for 6s

Power Off:

Method 1: Place the earbuds back in the charging case

Method 2: Press and hold the ② for 8s to power off

Bluetooth Paring:

a) Take out earbuds from the charging case, green light flashes slowly to enter pairing mode. Enable Bluetooth on device, find "EP02" and connect. Light turns off when connected.

b) Connecting to a New Device.

To connect the earbuds to a new device, follow these steps:

Press and hold the ② for 8s to power off.

Press and hold the ② for 6s to power on. At this point, the earbuds will enter pairing mode for new devices.

Open the Bluetooth settings on your new phone/device.

Select the Bluetooth name of the earbuds.

Confirm the connection. (This function is suitable when you need to pair with a new device and the original device is not nearby, avoiding manual operations and making it more convenient for users.)

Sleep Mode:

The earbuds enters sleep mode after 5 minutes if not connected to Bluetooth.

The indicator light turns off, and the Bluetooth connection closes, but "TSC Mode" remains active.

Waking Up & Re-entering Pairing Mode:

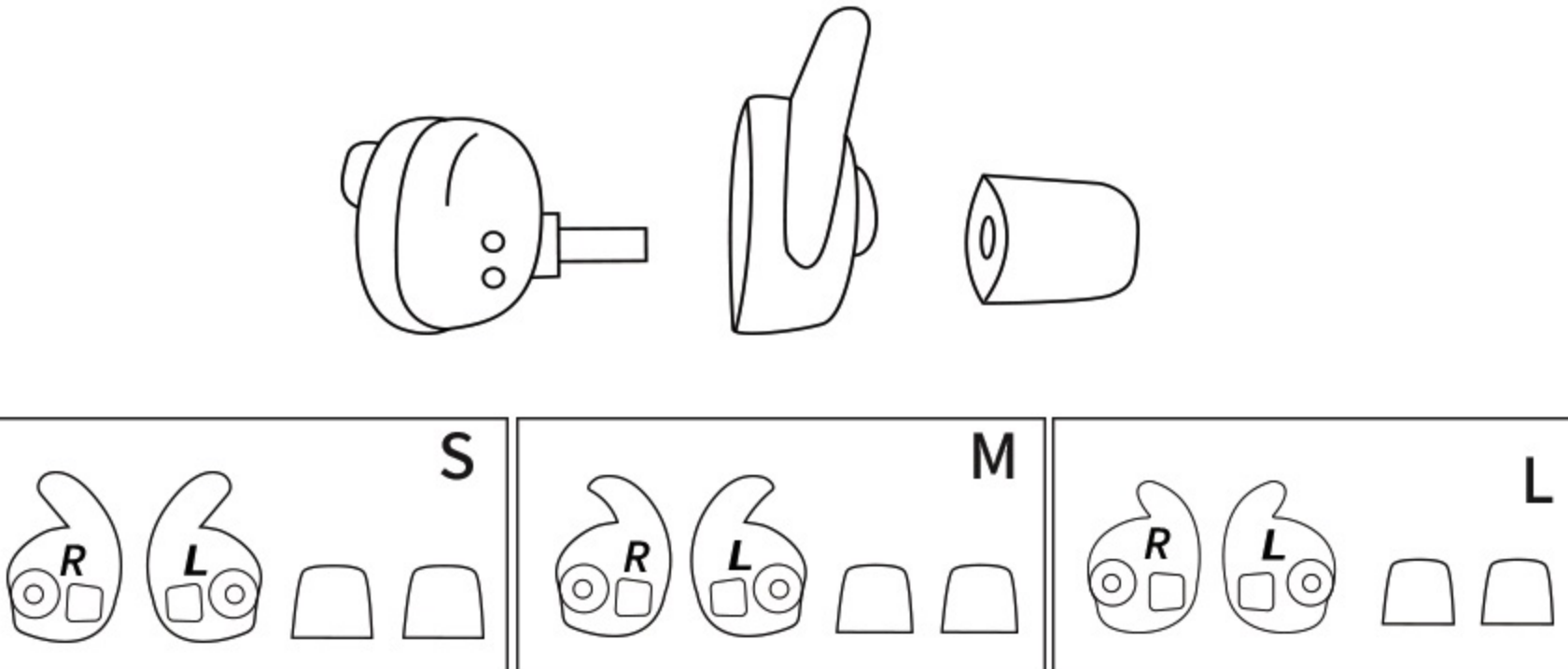
Triple-tap ② to wake it up and re-enter pairing mode.

Disconnection Due to Excessive Distance:

The earbuds disconnects when out of the effective Bluetooth range. If brought back within 5 minutes, it will automatically reconnect. However, if reconnection fails, it enters pairing mode. If not returned to the effective Bluetooth range within 5 minutes, the headset does not automatically turn off.

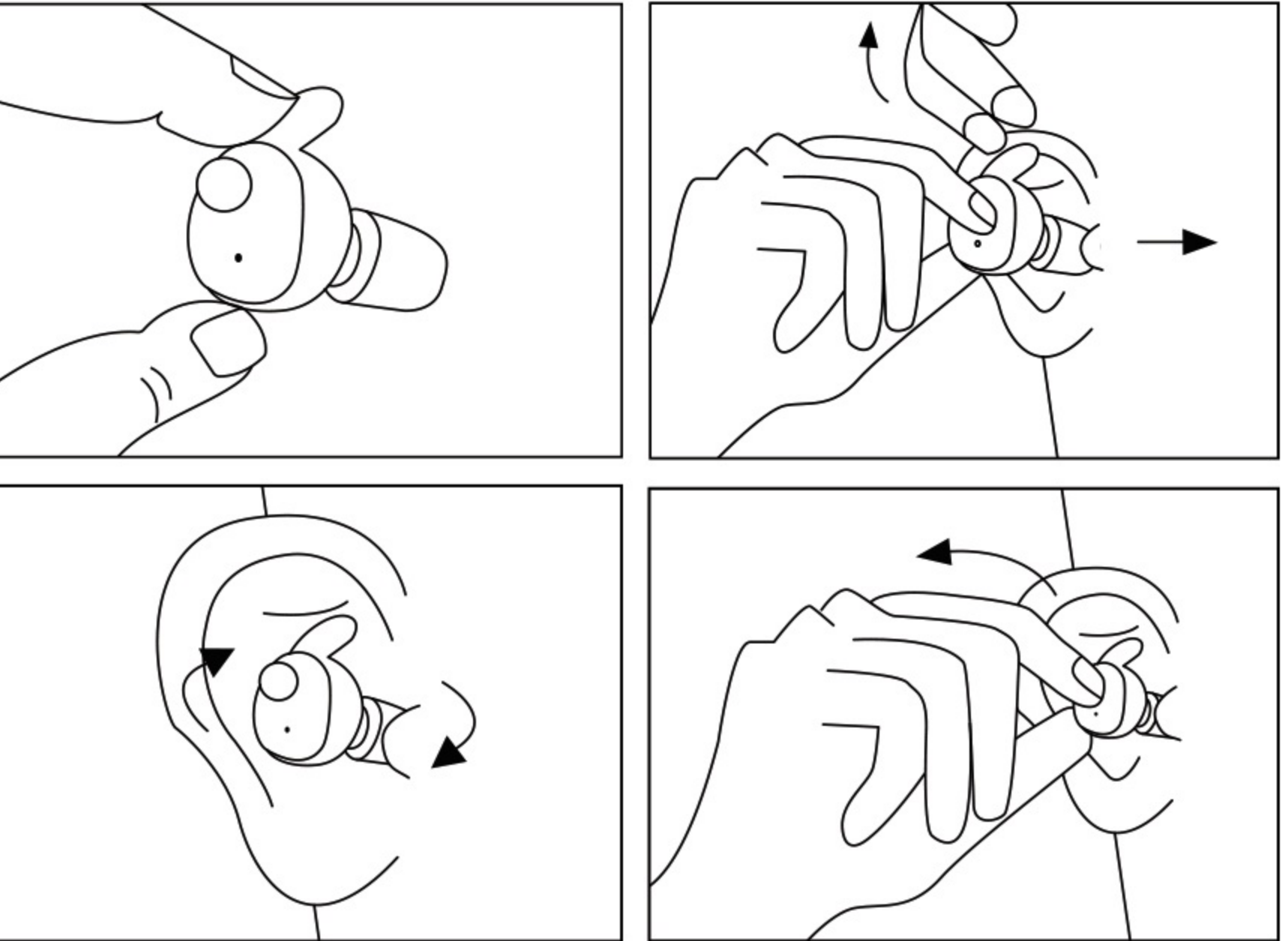
INSTALLATION INSTRUCTIONS (EAR HOOKS, EARPLUGS)

1. Install the appropriate size of ear covers onto the headphones according to the corresponding direction.
2. Attach the eartips onto the earpiece stem.
3. Ensure that the earbuds are securely fixed onto the earpiece stem.



EARPHONE WEARING INSTRUCTIONS

1. Turn off the power before wearing the earbuds.
2. Choose the suitable size of earbuds.
3. Insert the earplugs into the ear canal while gently pulling up the ear with the other hand.
4. Rotate the earbuds towards the inner ear canal and adjust it to the most comfortable position. Make sure the ear covers are completely secured in the earlobe.



WARRANTY

All our ZOHAN hearing protections Pass Strict Quality Control before shipment and Well Packed in elegant box. We strive to make every product the best it can be and ensure all customers are satisfied. Please feel free to contact us if you have any questions, and we will reply within 24 hours. We promise 1 YEAR money back guarantee for quality problems and lifetime customer support

This warranty shall be void in case of any of the following circumstances:

1. The unit has been tampered with or pierced.
2. The device has been submerged in water or other liquids, exposed to excessive dirt or dust accumulation, or subjected to physical abuse in any form.

Adherence to these warranty limitations is essential to maintain the validity of your warranty coverage.

Contact Us:
ZOHAN Official Email -- support@zohantech.com

Label (including FCCID)

ZOHAN®
FCC ID: 2AYWU-EP02
Model: EP02

SPECIFICATION
Battery capacity: 40mAh*2
Charging case:
Battery capacity: 300 mAh
Rated input: 5V === 150 mA
Rated output: 5V === 60 mA

Customer Service:
support@zohantech.com

RoHS **CE**
EN352
ANSI S 3.19
MADE IN CHINA

FCC ID: 2AYWU-EP02

NOTE: This equipment has been tested and found to comply with the limits for aClass B digital device, pursuant to part 15 of the FCC Rules. These limits aredesigned to provide reasonable protection against harmful interference in areidential installation. This equipment generates uses and can radiate radio frequency energy and, if not installed and used in accordance with the instructions,may cause harmful interference to radio communications. However, there is noguarantee that interference will not occur in a particular installation. If thisequipment does cause harmful interference to radio or television reception, which can be determined by turning the equipment off and on, the user is encouraged to try to correct the interference by one or more of the following measures:

- Reorient or relocate the receiving antenna.
- Increase the separation between the equipment and receiver.
- Connect the equipment into an outlet on a circuit different from that to which the receiver is connected.
- Consult the dealer or an experienced radio/TV technician for help.

CAUTION: Changes or modifications not expressly approved by the party responsible for compliance could void the user's authority to operate the equipment.

This device complies with part 15 of the FCC Rules. Operation is subject to the following two conditions: (1) This device may not cause harmful interference, and (2) this device must accept any interference received, including interference that may cause undesired operation.