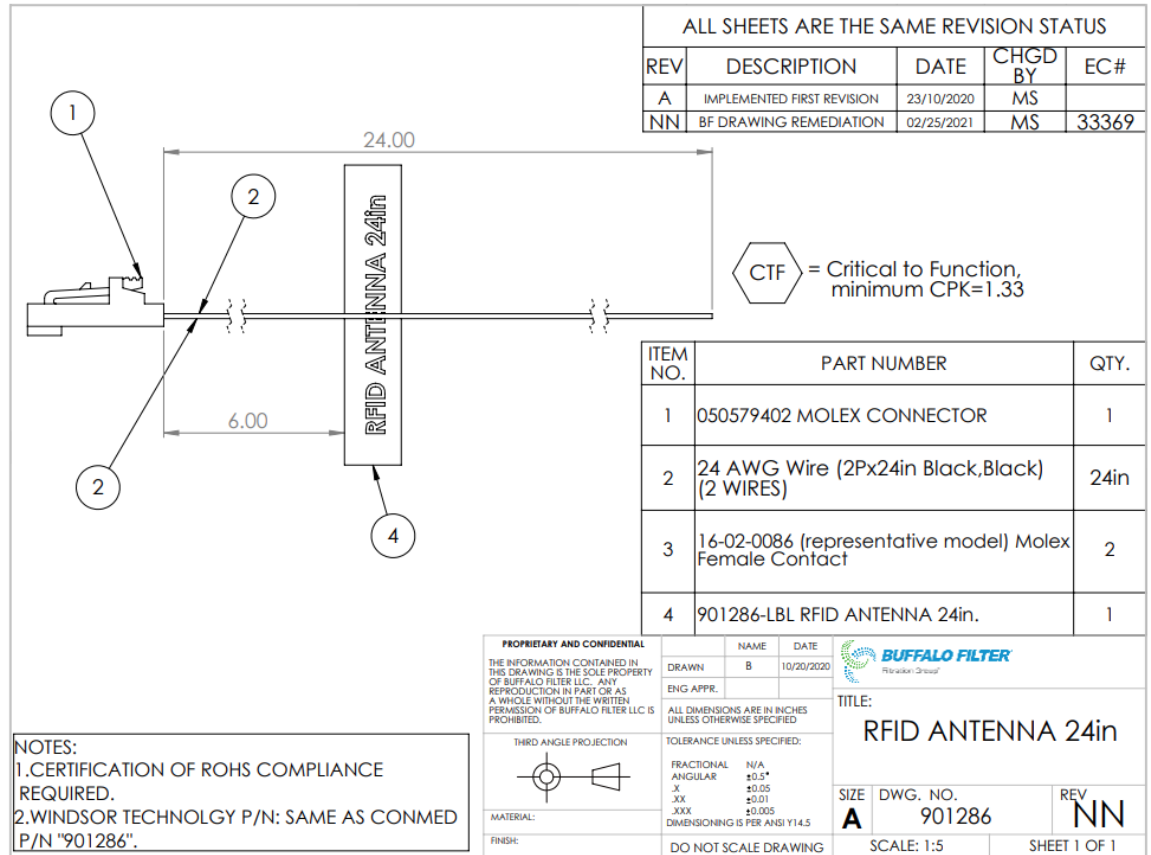


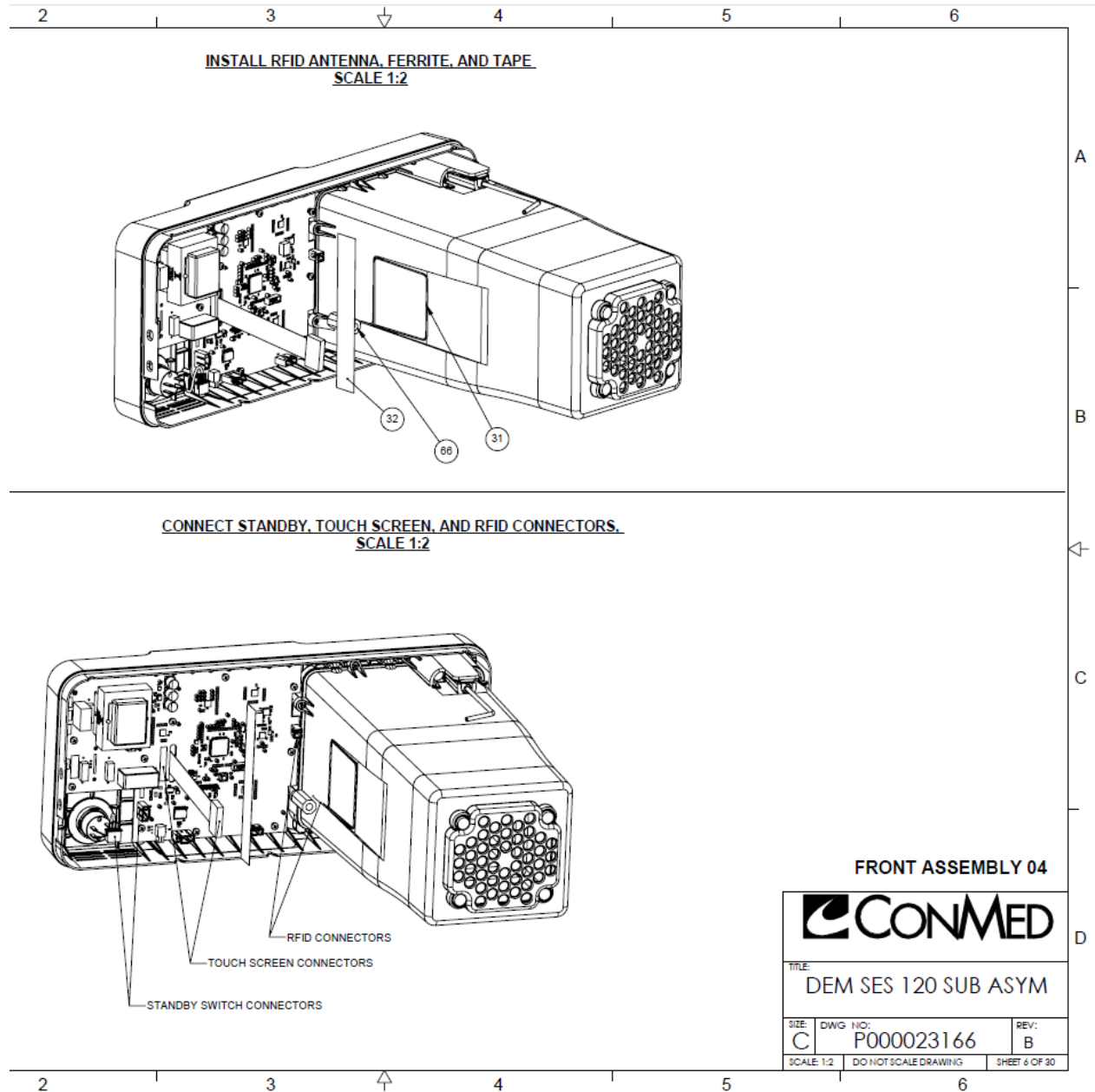
List of antennas to be used with the transmitter.

- 901286 – ANTENNA, RFID, 24"
 - Single loop consisting of 24" of black 24AWG wire. See included drawing for details.
- Antenna drawing:



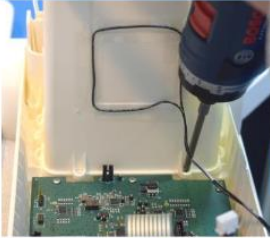


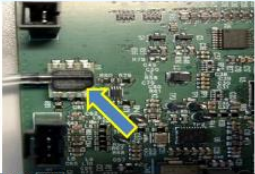








- The assembly process is the same on all models. The position of the antenna loop is made consistent by the assembler approximately aligning the harness with depressions in the plastic fascia. The resulting loop is a 2.18x2.25 square with loosely rounded corners.

- Assembly drawing excerpt (top half of sheet):



• Manufacturing Instruction (MFP) Excerpt:

FY-SES220/ UFY-SES220P1 / UFY-SES220P1NF		Hoja estándar de operación / Standard Operation Sheet	
 901286 (RFID Antenna 24")		 Foto 1 Colocación de Antena RFID	 Foto 2 Ensamble de cubierta en fascia
 901291 (RFID Tape)		 Foto 3 Colocación Ferrita	 Foto 4 Colocación de tubo en sensor de presión
 903196 (SCREW 4-20 3_8 PH PN PL SS)		 Foto 5	
 902120 (FERRITE 25-300MHZ)			
#	Seguridad: Security:	Otros: Other:	Herramientas y equipos con parámetros: Tools & Equipment w/ Settings:
			 Equipo de torque
		Utilizando un tape 901291 (RFID TAPE) pegue la antena 901286 (RFID ANTENA 24") colocandola por todo el marco del cuadro que se encuentra en el basket. (Foto 1)	
		Ensamble la P000027684 (Fascia Basket) a la fascia utilizando 8 tornillos 903196 (SCREW 4-20 3_8 PH PN PL SS). (Foto 2)	
		Coloque una ferrita 902120 en la antena RFID pasandola dos veces y cerrandola posteriormente como se observa en la foto 3.	
		Rutee el tubo de sensor de presion e insertelo en la lengüeta del sensor de presión que se encuentra en el U9 de la tabilla. Asegure que se encuentre bien sujeto y tenga cuidado de no romper el componente. (Foto 4)	
		Conecte la antena RFID 901286 en la tabilla en el conector J8. (Foto 5)	

- Fascia drawing excerpt. The dimensions of the rectangular antenna layout guide are approximately 2.18 x 2.25 (calculated from dimensions in zone B3). Note that the assembly process is to approximately align the antenna with the fascia – there is no dimensional specification.

