

**FIIL<sup>®</sup>**



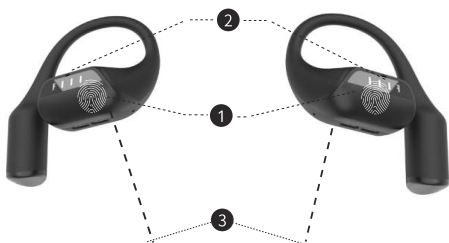
# FIIL GS

Open-ear True Wireless Earbuds

## User Manual

# User Interface

● earphone



1 Touch area

2 LED indicator

3 Call microphone

● Charging box



5 Charging box

6 LED Indicator

7 USB-C charging port

# Bluetooth pairing

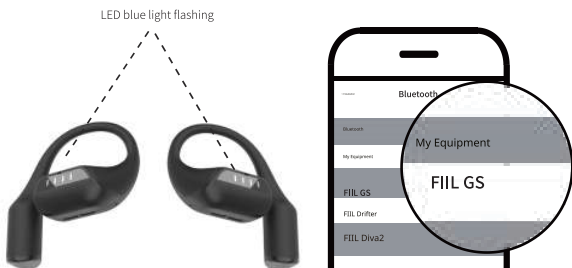
## ● Enter pairing

Newly purchased FIIL GS headphones: When using for the first time, turn on the charging box and the headphones will automatically enter Bluetooth pairing mode, and the white light will continue to flash. If the headphones have been paired before, you need to pair them again: Press and hold the Bluetooth pairing button while the headphones are turned off.

Touch the headset panel until the white light flashes, or delete the connected FIIL GS Bluetooth record on the phone.

## ● Search Links

Manual connection: Enter the settings of your phone and click "Search for devices" in the "Bluetooth" option. Click to connect to the searched FIIL GS and complete Bluetooth pairing. After the paired earphones open the charging box, the left and right earphones will automatically synchronize and the earphones will automatically reconnect to the last paired device.



Note: Due to the characteristics of Bluetooth headsets if you are in an environment where there is severe interference with Bluetooth signals

The phone may be slow to search for Bluetooth devices. Please move closer to the phone and search again or try again in an environment with less signal interference.

# Operational Controls

## ● Power On

Take the earphones out of the charging box and they will automatically turn on and connect to your phone.

If you are using them for the first time, they will automatically enter pairing mode.

If the earphones are turned off and not in the charging box you can turn them on manually by pressing the touch panel for 2 seconds.

You will hear the startup music and the LED on the earphones will light up blue.



## ● Power Off

Put the headset into the charging box and close the lid, the headset will automatically shut down.

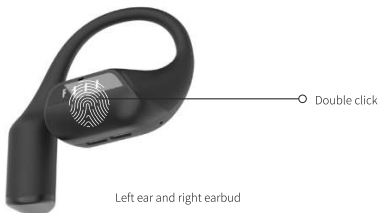
You can also press and hold the headset touch panel for 6 seconds, you will hear the shutdown music, and the headset LED will light up white and then go out.



## ● Answer/Hang up the call

When a call comes in, double-click the touch screen or put on the removed headset to answer the call; when the call ends, double-tap the touch key to hang up the call.

Note: You need to turn on the wearing sensor function to answer the phone while wearing the headset.



# Operational Controls

- **Reject call**

When a call comes in, middle press (hold for 2 seconds) the touch to reject the call.



- **Play/Pause**

After the headset is connected to Bluetooth, double-click the touch control to play/pause music.  
Note: The music player needs to be running in the background.



- **Voice Assistant**

After the headset is connected to Bluetooth, tap the touch screen 4 times to activate the system's built-in voice assistant.  
Note: Mobile phones and other devices must support voice assistants, and this function must be enabled in the fiil+ App.



# Operational Controls

## ● Volume Up/Volume Down

Click the left earphone to increase the volume, and triple-click the left earphone to decrease the volume.



Note: The above functions require the installation of the fil App and activation of the "full control mode"




## ● Next/Previous

Click the right earphone to switch to the next song, and triple-click the right earphone to switch to the previous song.



Note: The above functions require the installation of the fill+ App and activation of the "full control mode"

# Product Parameters

Project	Parameter
Earbuds	About 8.2g (L/R), Input: 5V  70mA*2
Charging box	About 48 grams, input: 5V  500mA; output: 5V  70mA*2
Connection Mode	Bluetooth True Wireless
Bluetooth	Version: 5.4, supported protocols: HSP, HFP, A2DP, AVRCP, transmission distance: up to 10 meters, code: 0000, supports iOS/Android devices
Audio Specifications	Supported decoding: LDAC*, AAC, SBC; Speaker specifications: 18mm diameter composite diaphragm unit, music frequency range: 15Hz-22KHz
Power and battery	Rechargeable lithium polymer battery; music playback up to 6 hours (50%volume); Charging time: about 60 minutes; Use with the charging box, it can provide an additional 3 Lifecycle of TWS battery.
Environment	Working temperature: 0°C~35°C; storage temperature -30°C~70°C;
Voice prompts	Mandarin
Certification	Bluetooth 5.4

Note: LDAC decoding requires paid support.

# Product Statement

## FCC Statement

This equipment has been tested and found to comply with the limits for a Class B digital device, pursuant to Part 15 of the FCC Rules. These limits are designed to provide reasonable protection against harmful interference in a residential installation. This equipment generates uses and can radiate radio frequency energy and, if not installed and used in accordance with the instructions, may cause harmful interference to radio communications. However, there is no guarantee that interference will not occur in a particular installation. If this equipment does cause harmful interference to radio or television reception, which can be determined by turning the equipment off and on, the user is encouraged to try to correct the interference by one or more of the following measures:

- Reorient or relocate the receiving antenna.
- Increase the separation between the equipment and receiver.
- Connect the equipment into an outlet on a circuit different from that to which the receiver is connected.
- Consult the dealer or an experienced radio/TV technician for help.

This device complies with part 15 of the FCC Rules. Operation is subject to the following two conditions:

- (1) This device may not cause harmful interference, and (2) this device must accept any interference received, including interference that may cause undesired operation.

Changes or modifications not expressly approved by the party responsible for compliance could void the user's authority to operate the equipment.

The device has evaluated to meet general RF exposure requirement. The device can be used be in portable exposure without restriction.