

GemLightbox PRO User Manual



Scan to watch
Setup Video





Thank you!

At Picup Media, we've helped over 10,000+ jewelers enter the digital world and we hope to share the same experience with you!

We created GemLightbox PRO during the pandemic to seamlessly assist the industry into going digital when going digital is the ONLY way forward.

As you take your first GemLoupe photo, we want to say thank you and congratulations! The digital future is now, but together, we will thrive!

Onwards to business resiliency!

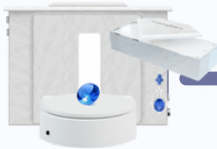
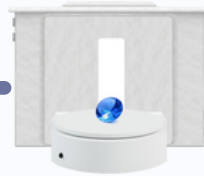
The Picup Media Team

GemLightbox Pro



2014: Release of
GemLightbox; The World's
First Smartphone Jewelry
Lightbox

2016: Release of
GemLightbox Turntable
and GemLightbox App



2019: Release of
GemLightbox Aerial;
World's first dangling
turntable



2022: GemLightbox PRO
ALL-IN-ONE GemLightbox.

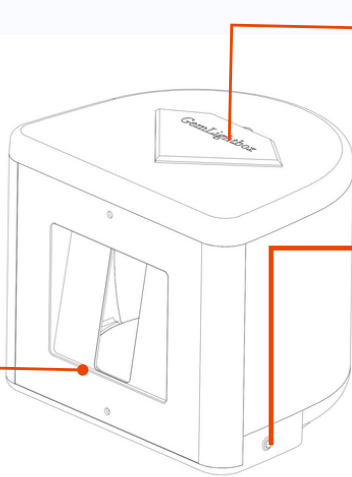
GemLightbox Pro

Bigger, faster and Pro lighting



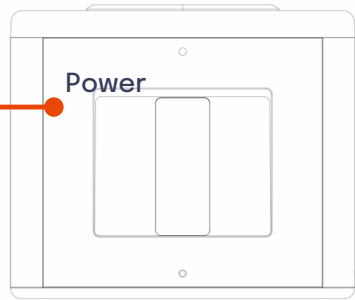
Photography automation to capture
1 video and 4 photographs in one click!

GemLightbox Pro

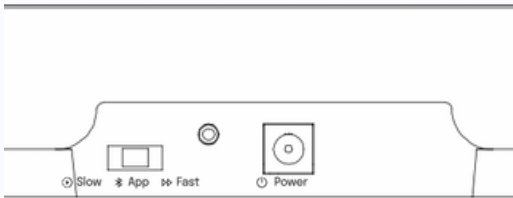


Removable lid to reveal top shooting angle

Removable reflector

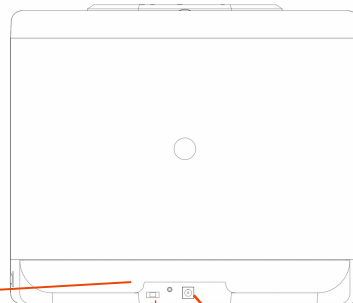


Power



⏸ Slow * App ⇨ Fast

⏻ Power



Switch between manual and GemLightbox app control

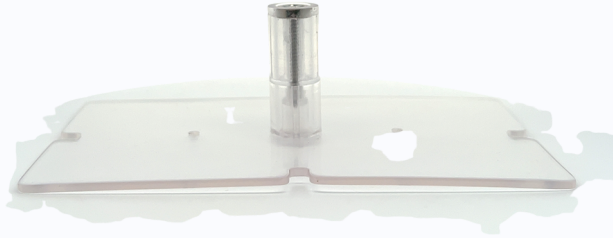
Power socket Plug in power cable here

Slow: turntable will be rotating endlessly at 30 seconds/ 360 rotation

FAST: turntable will be rotating endlessly at 15 seconds/ 360 rotation

APP:
Turntable can be connected to the GemLightbox APP.

Accessories



What's Included?



GemLightbox PRO



4 T-bar Earring Stands



Watch Holder



Smartphone Holder



Necklace Stand



1 x Sparkle Light



1 x Yellow Light



Before you start Install the GemLightbox App



Scan to download
Or search for “GemLightbox”
in your App Store



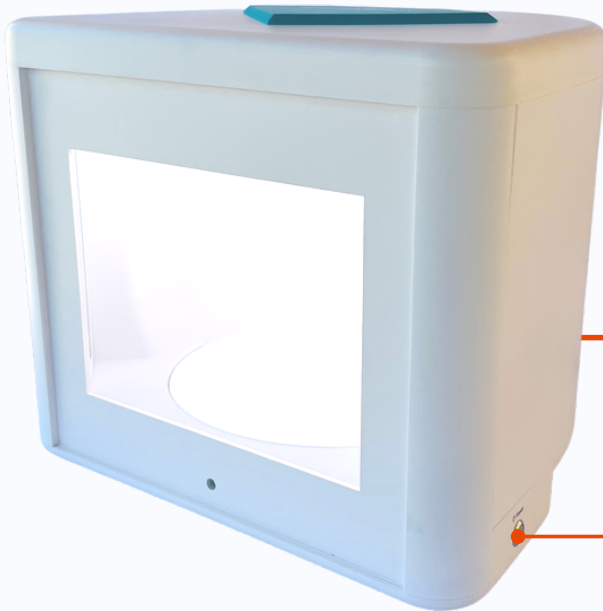
How to Take Photos and Videos

GemLightbox Pro is a plug and play solution, with absolutely no setup required. Simply plug in the adapter and Power on

Power On



Power cable at the
back of box



Power on

Two shooting angles

Top shooting angle

This angle will give you a bird's eye view of the jewelry. Remove the diamond piece from the lid and slide the turntable to the side to reveal the top shooting angle.



Front shooting angle

Front shooting angle is the most common shooting angle



Step 1:

Setup Jewelry or gemstone



Hang Necklaces

Hang necklaces using the necklace stand





Hang Earrings

Hang Earrings by attaching them onto the T-bar stands and then attaching it onto the necklace stand.





Hang Watches

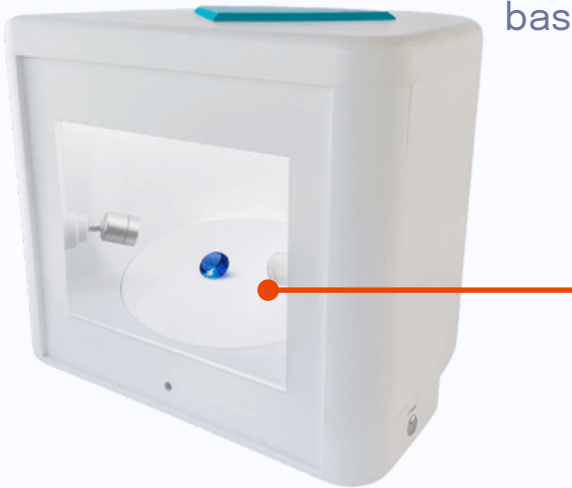


Hang watches by placing the watch onto the watch stand and then attaching it onto the necklace stand.



Place in jewelry on the base turntable

Place brooches, rings and other accessories on the base turntable.





Place gemstones on the base turntable



Additional lighting

The PRO comes with 2 additional add-on lights to help you bring out the true color and sparkle in all your jewelry items.

Sparkles

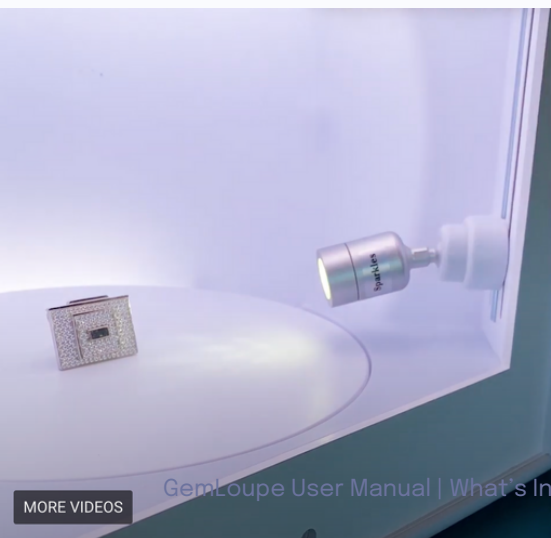


“Sparkles” sits at 5500k and is used to bring out natural sparkles without damaging the nature of the stone. It is a direct light source designed to highlight natural fires and scintillation.

Yellow



“Yellow” is another add-on light that sits at 3500k, and mimics a natural sunlight environment. This feature works best for Rubies, Emeralds, Sapphires, Opals, and any other stones that require yellow light to bring out their true color.





Step 2:

Connect the GemLightbox APP

If you have not installed the GemLightbox app yet.

Simple search for “GemLightbox” on the iOS App store or Google Play store or scan the QR code here



Connect to bluetooth

Once you are in the Application, open up the Bluetooth section and connect to the GemLightbox Pro by clicking on it.



Place smartphone onto stand

You can place your smartphone vertically or horizontally.



Place your phone vertically to capture your jewelry from a 45 degree view



Place your smartphone horizontally to get a direct front on view of your jewelry

Smartphone stand

The smartphone stand is used to hold your smartphone steady when photographing your jewelry. Place your smartphone onto the smartphone stand and adjust to your desired angle.



To adjust, simply open up the smartphone stand and place the legs at the angle you wish. You can also adjust the height. Simply push the stand upwards or downwards.



Step 3

Click to capture

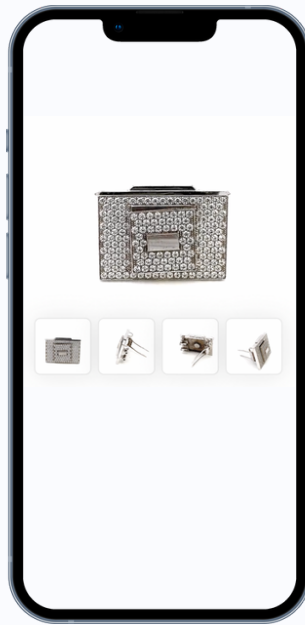
One click away!



Burst mode

1 videos and 4 photos in 15 seconds!

The PRO comes with a built in automation feature that automatically takes photos for you during the video process; saving you even more time!



Simply click the capture button and the PRO will go into automation creating a perfect 360 video and 4 still photographs for you in just one click!

This allows you to complete your entire photography for each product in just 15 seconds!



Thank you!

At Picup Media, we've helped over 10,000+ jewelers enter the digital world and we hope to share the same experience with you!

We created GemLoupe during the pandemic to seamlessly assist the industry into going digital when going digital is the ONLY way forward.

As you take your first GemLoupe photo, we want to say thank you and congratulations! The digital future is now, but together, we will thrive!

Onwards to business resiliency!

The Picup Media Team



Looking for a solution to capture loose diamonds?

4.9 ★

333 Reviews



GemLightbox Macro

- ✓ 10X Magnification
- ✓ For loose diamonds and gemstones
- ✓ 0.1 carat to 50 carats

Learn more at:

www.picupmedia.com/macro

Join Jewelers Network



Discuss, learn, and network with
other jewelers worldwide



Scan Here to
join facebook
group

Find us on social media



@gemlightbox



GemLightbox



Picup Media



@picup_media

This device complies with part 15 of the FCC Rules. Operation is subject to the following two conditions: (1) This device may not cause harmful interference, and (2) this device must accept any interference received, including interference that may cause undesired operation.

Any Changes or modifications not expressly approved by the party responsible for compliance could void the user's authority to operate the equipment.

Note: This equipment has been tested and found to comply with the limits for a Class B digital device, pursuant to part 15 of the FCC Rules. These limits are designed to provide reasonable protection against harmful interference in a residential installation. This equipment generates uses and can radiate radio frequency energy and, if not installed and used in accordance with the instructions, may cause harmful interference to radio communications. However, there is no guarantee that interference will not occur in a particular installation. If this equipment does cause harmful interference to radio or television reception, which can be determined by turning the equipment off and on, the user is encouraged to try to correct the interference by one or more of the following measures:

- Reorient or relocate the receiving antenna.
- Increase the separation between the equipment and receiver.
- Connect the equipment into an outlet on a circuit different from that to which the receiver is connected.
- Consult the dealer or an experienced radio/TV technician for help.

