

## Dear user,

Hello! Welcome to use wireless ip camera.wherever you are,real-time videos and excellent records will be shared to you anytime through this product.it seizes what you concern to bring happy life.  
Pls read this manual carefully before use the product in order to use it well.

## Mobile remote

I.Open mobile phone.scan following QR code to download APP:



### IOS APP

(IOS uses use App Store to search"Secueye"and download)

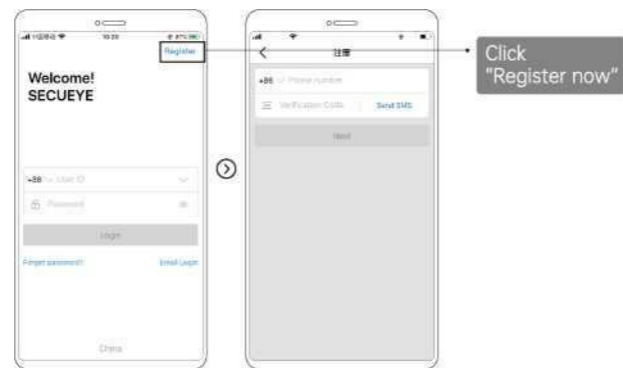


### Android APP

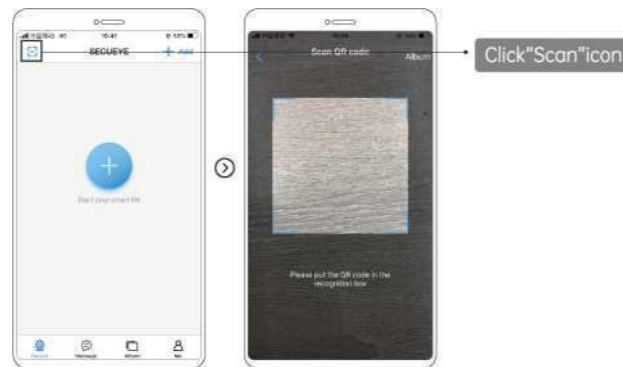
(Android uses use Google Play to search"Secueye"and download)

## Mobile device set-up network

I.Open "Secueye"APP and click"Register now"at the top-right corner to select registration method as follows:



Click the scan icon to scan the QR code under the camera bottom as follows:



Set-up network successfully



## Main features

1.Remote control of camera:Support users to move the lens through remote control and two-way talk.etc.



Click"camera remote control interface"

Remote two-way talk

Monitoring remotely

Photograph and video function (look over in "album")

2.Message function:mainly receive info from camera to feedback for users.



Click "message"

Message interface

3.Playback:enter into the control interface.click "playback"Ybu can watch records in various periods by sliding "TimeLine"qnd click calendar on the right then you can choose playback date.



Click "Remote control interface"

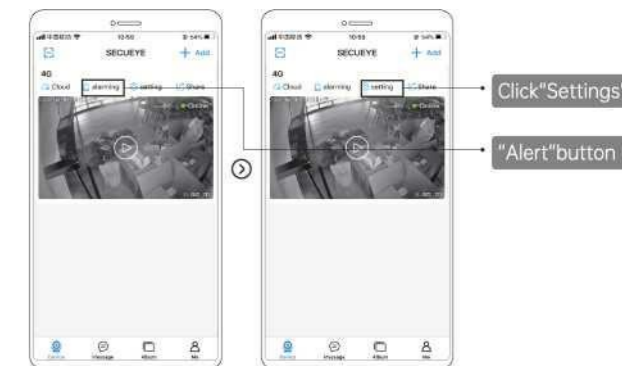
Click "playback"



Slide"TimeLine" Watch records in various periods

Click"Calendar" Choose date to watch other videos

4.Alert function:Click"Settings-Alarm settings",and set the function as per demand.



Click"Settings"

"Alert"button

