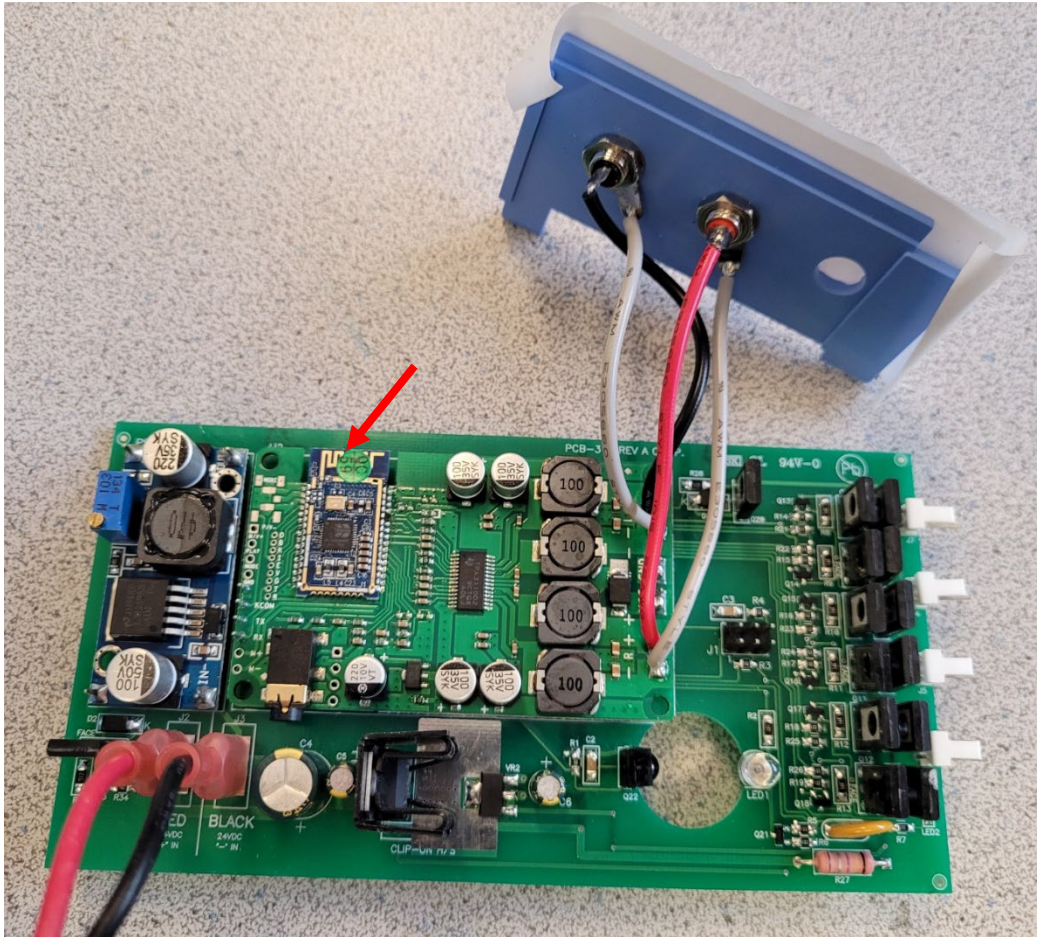
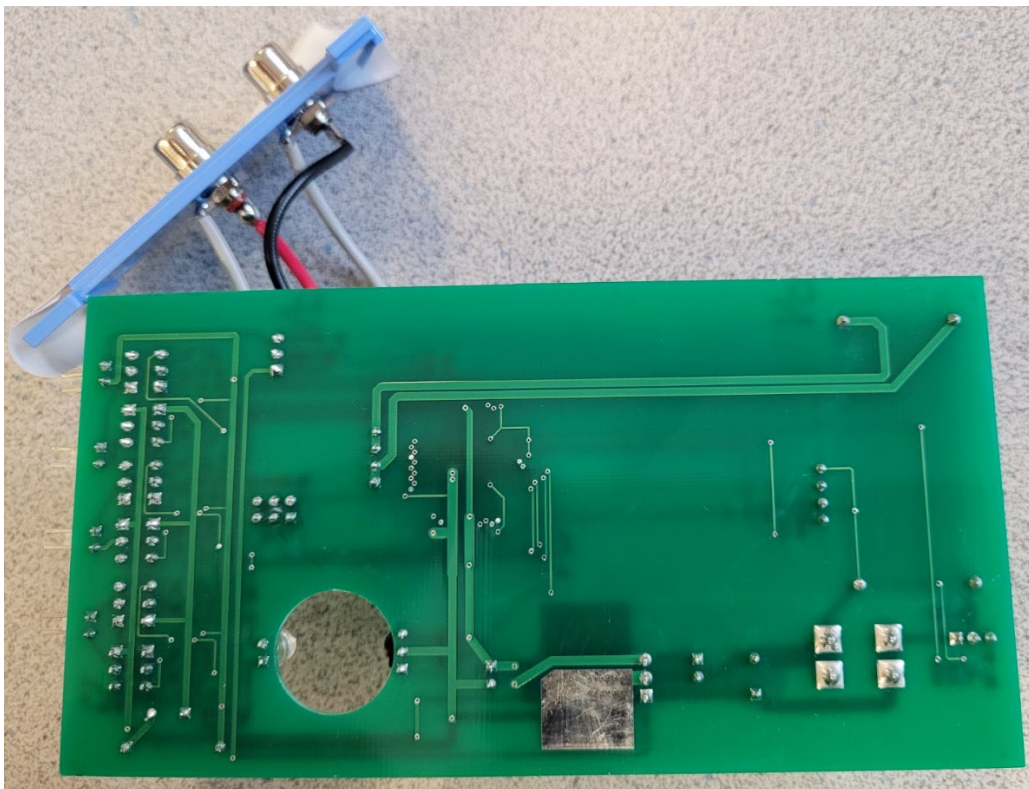


## 5 - Internal Photos

PCB Assembly With Bluetooth Daughterboard/Module – Front.  
Arrow indicates the Transmitter Antenna:



Back:





A photograph of a green printed circuit board (PCB) populated with various electronic components. The board is mounted on a metal chassis, secured by several screws. Key components visible include a large, multi-pin connector on the left side, a large integrated circuit (IC) in the center, and several electrolytic capacitors of different sizes. The PCB is populated with numerous surface-mount components, including resistors and smaller capacitors. The board is connected to external wiring, with red and black wires visible at the bottom. The overall appearance suggests a custom-built or modified electronic device.



Power Supply:

