



Esprit SmartTM

SMART DOOR LOCK



USER MANUAL

For ESB02-CF Bluetooth® Enabled Smart Door Lock

Thank you for choosing ESPIRIT door lock.
If you experience problems or challenges with it,
our customer services are always ready to help.
Please send your requests by email to
supported@espirittech.com



PART 1 | Installation Instructions

CONTENTS	
Parts and Accessories	2
Additional Tools for Installation	2
Installation Instructions	3-12

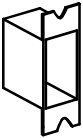
Parts and Accessories



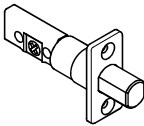
Front Panel



Rear Panel



Screw Box



Latch



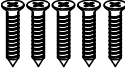
Keys



Strike Plate



4pcs M4
*8mm screws

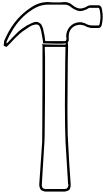


5pcs M5
*14mm self-tapping
screws



6pcs M4
*24mm screws

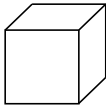
Additional Tools for Installation (Not Included)



Hammer



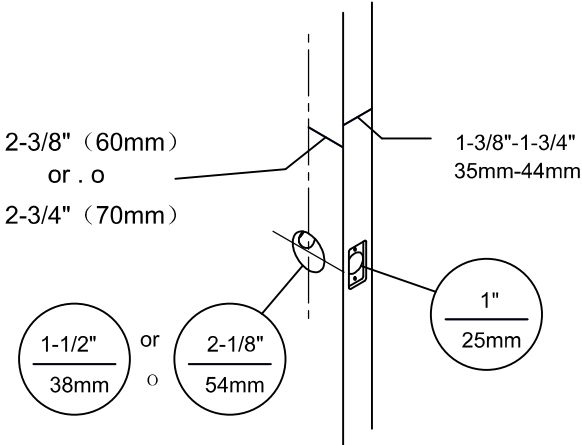
Cross Screwdriver



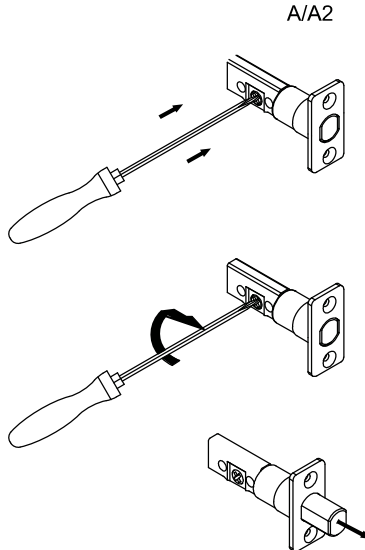
Strike Wood Block

Installation Instructions

1 Check Dimensions

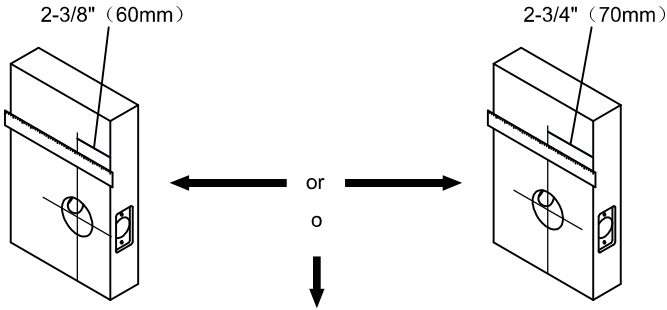


2 Check if the latch works well

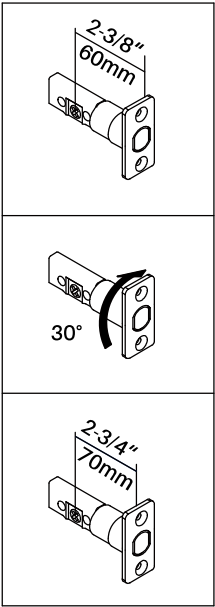


Installation Instructions

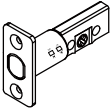
3 Check the position of the front installation hole



Pre-set drive-in latch is 60mm
Adjust the latch to 70mm as below if needed

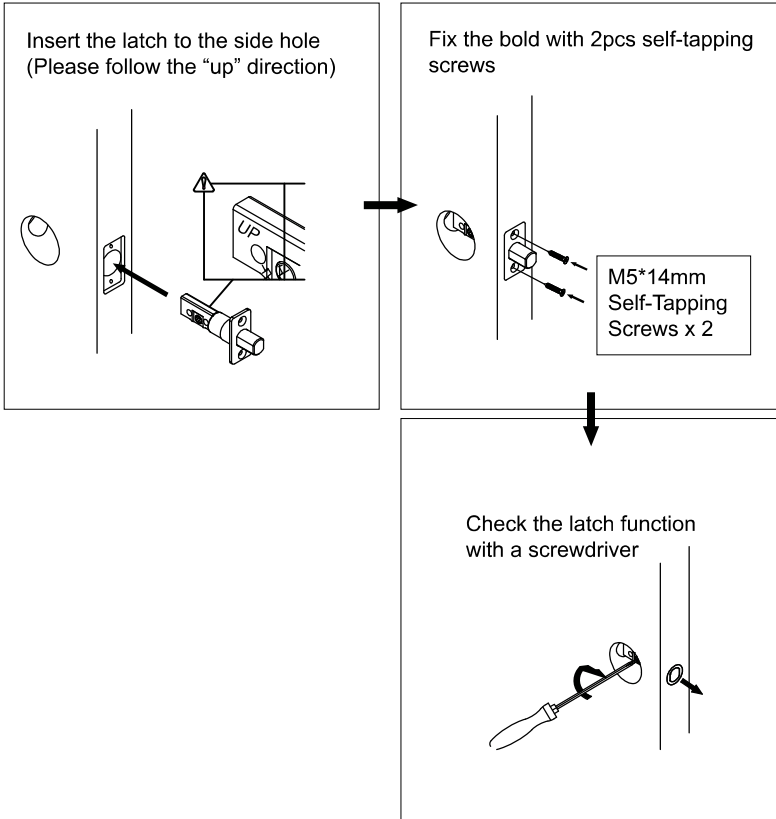
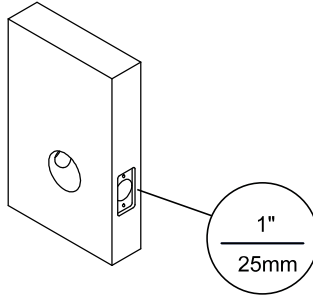


Please make sure the
spring bolt is retracted when
adjusting the latch.



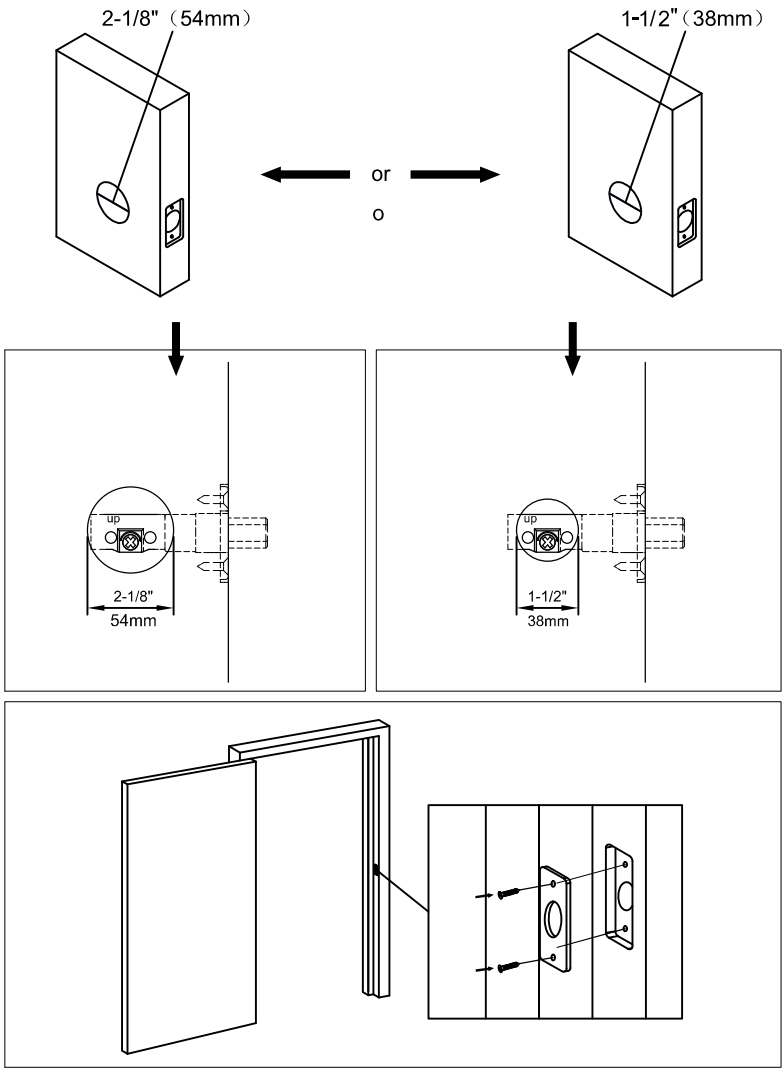
Installation Instructions

4 Check the size of side installation hole



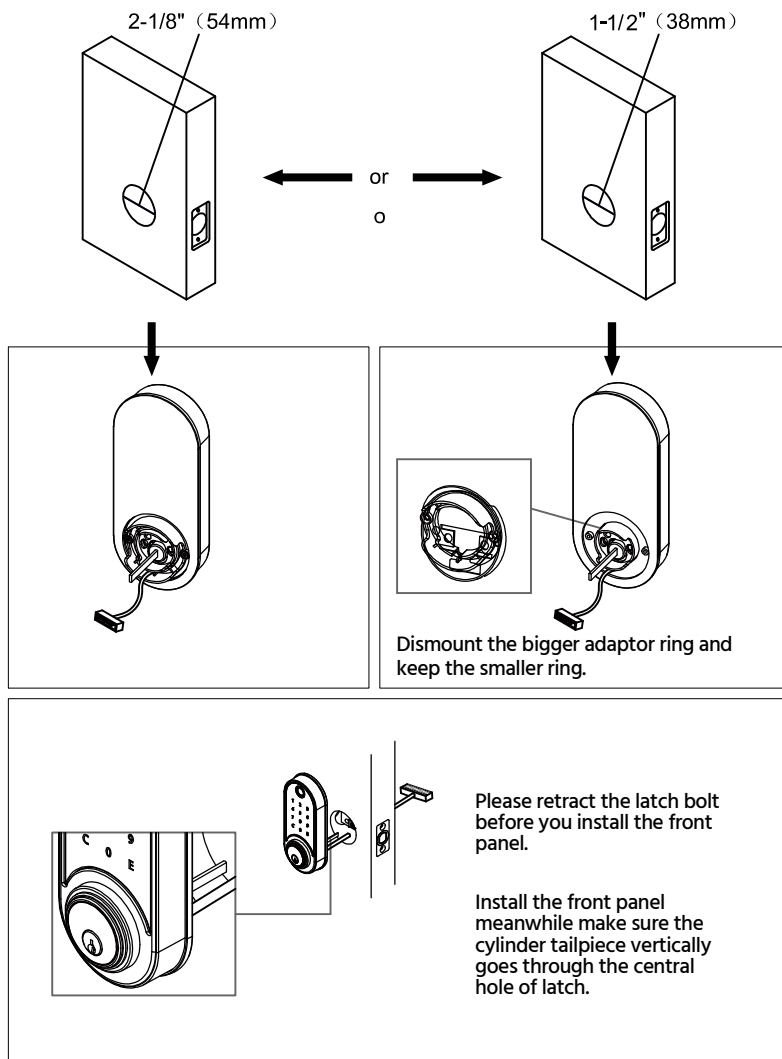
Installation Instructions

5 Check the size of the front installation hole



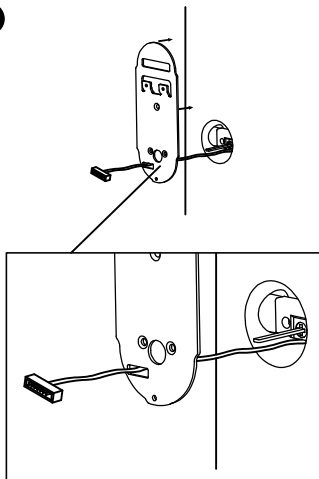
Installation Instructions

6

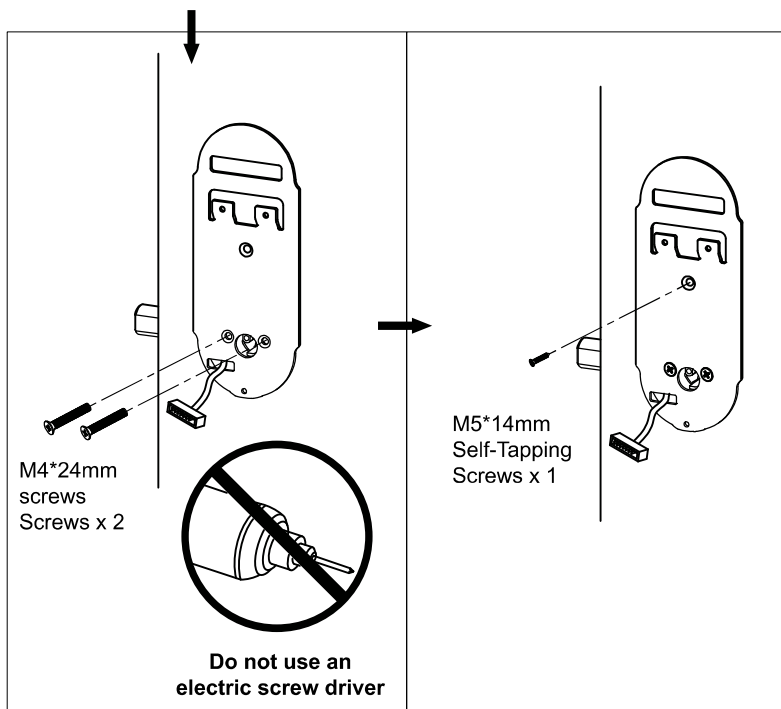


Installation Instructions

7



Pull the connecting wire through the square hole on the back mounting plate, screw the plate to the door back with 2pcs M4 * 24mm screws



Installation Instructions

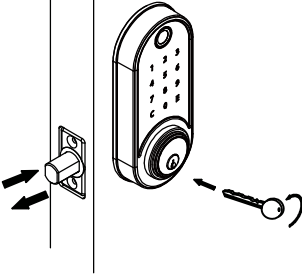
8

Look from the door outside

Left side opening

Note:

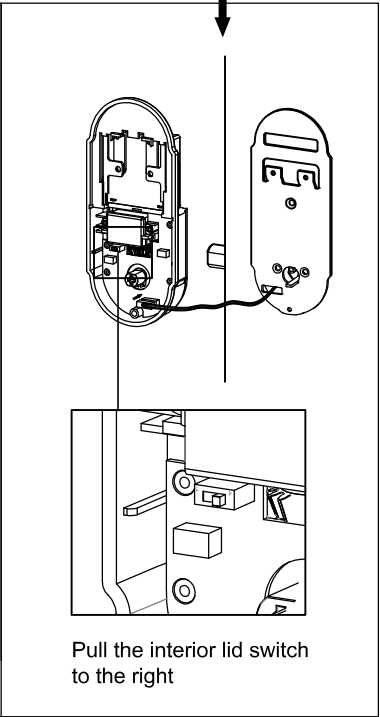
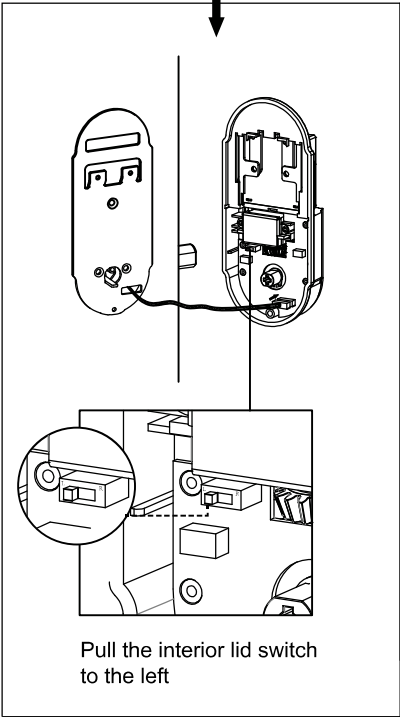
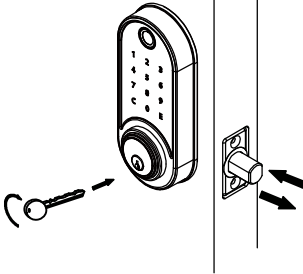
The exterior keypad is installed on the left side of the door.



Right side opening

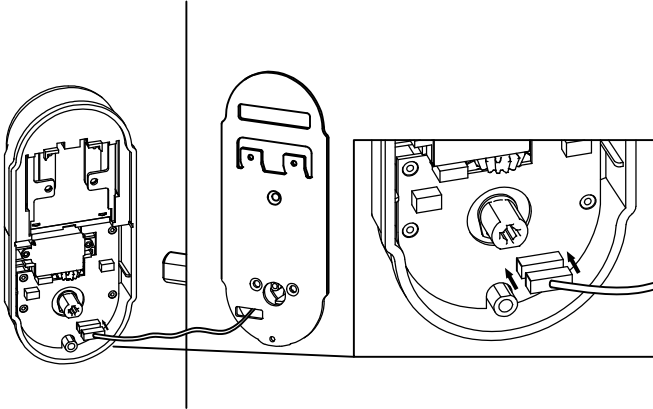
Note:

The exterior keypad is installed on the right side of the door.



Installation Instructions

- 9 Insert the connecting wire to the cable on the interior lid



- 10 Install the thumbturn

Please retract the latch bolt before you install the thumbturn as follows.

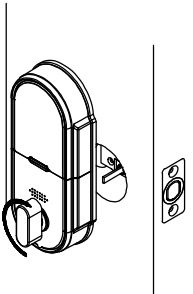
Notice: After you install the thumbturn, test it to make sure it moves correctly.

• Look from the door outside

Left side opening

Note: The exterior keypad is installed on the left side of the door.

Insert the cylinder tailpiece to the thumbturn (the thumbturn should be in vertical position when the latch is retracted).

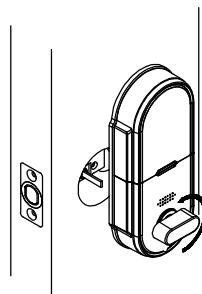


• Look from the door outside

Right side opening

Note: The exterior keypad is installed on the right side of the door.

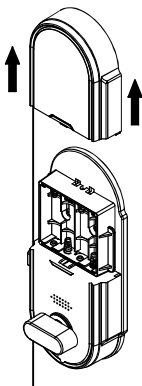
Insert the cylinder tailpiece to the thumbturn (the thumbturn should be in horizontal position when the latch is retracted).



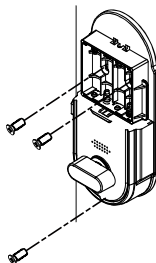
Installation Instructions

11 Install the battery

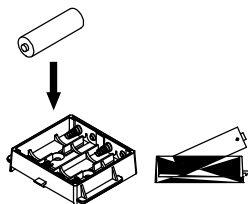
1. Pull the battery case cover uprightly



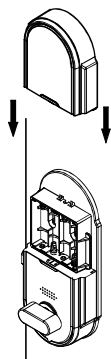
2. Fix the interior lid to the mounting plate with 2pcs M4*8mm & 1pc M4*24mm screws



3. Insert 4AA batteries



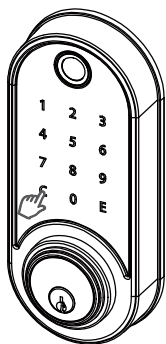
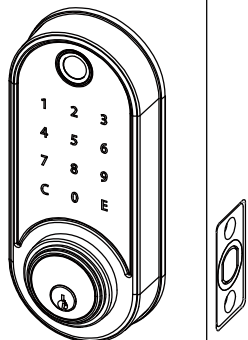
4. Install the batter case cover



Installation Instructions

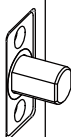
11 Test the door lock after installation

1. Use the key or thumbturn to test the latch in proper installation.



2. One touch "C", the locking bolt will automatically pull out and one short beep will be heard.

If it is not, please check whether you have followed this installation instructions.



PART 2 | User Guide

CONTENTS		
GETTING TO KNOW YOUR LOCK		14
LOCK BODY		14
BEFORE USE		14
QUICK SETUP		15
CONFIGURE YOUR LOCK ON THE APP		16-23
	HOME PAGE	16
	SIDE MENU	16
	PAIR YOUR LOCK	17
	SEND EKEY	18
	GENERATE PASSCODE	18-19
	E-KEY MANAGEMENT	19
	PASSCODES MANAGEMENT	19
	FINGERPRINT MANAGEMNET	20
	AUTHORIZED ADMIN MANAGEMENT	21
	CHECK AND REFRESH LOCKING&UN-LOCKING RECORDS	21
	LOCK SETTINGS	22
CONFIGURE YOUR LOCK ON THE KEYPAD		22
LOCK AND UNLOCK		23
KEYPAD LOCKOUT		23
LOW BATTERY WARNING		23
RESTORE FACTORY SETTINGS		23

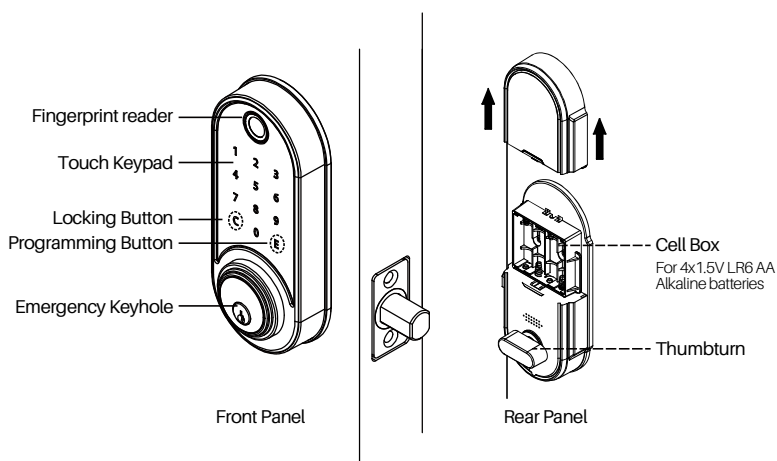
GETTING TO KNOW YOUR LOCK

ESB02 SMART Door Lock is a Bluetooth® Enabled smart door lock that works with your smartphone. Paired with the bluetooth gateway, you can control the door lock remotely anywhere anytime, also it works with the voice assistant of Amazon Alexa.

✓ Please read this user guide before use carefully.

✓ Please keep this user guide and back up it in your phone properly.

LOCK BODY



BEFORE USE

Initial Admin Passcode is 123456

1. Install your lock according to the installation guide;
2. Put 4x1.5V LR6 AA alkaline batteries into the cell box;
3. Insert and turn the emergency key to check whether the lock mechanism works well;
4. Use the initial admin passcode to unlock your door, check whether it works well;

Notes: In case of power off or malfunction situations, please use the emergency key to open the door. Keep your key properly in a safe place like office or car, don't leave it in your room.

QUICK SETUP

Follow these steps to get your lock set up and ready to use the application.
You can use the app to set up your lock step by step.

- 1 Download the app! Just search for “Espirit Lock” in the App Store or Google Play and register your account on the app.



Notes: For properties renting management, you also can download and use *Espirit Renting* app from App Store or Google Play.

DON'T WANT TO USE THE APP?

Initial Admin Passcode is 123456

- If you don't want to use the Espirit Lock app to control your lock. When in the first use and the lock hasn't be paired with the app yet, please enter **EE-12-E-123456-E-New Admin Passcode-E** on the keypad, it'll enter manual mode (skip to the section of CONFIGURE YOUR LOCK ON THE KEYPAD), then you're not able to discover and pair this lock on the app.

Notes: Once you paired your lock with the APP, the initial admin passcode will be changed automatically, you can find and change it by yourself in APP **Settings-Basics-Admin Passcode**.

- If you want to discover and add this lock on the app again, please enter **EE-83-E-Admin Passcode-E** on the keypad, then you can pair your lock on the app again.

- 2 Install your lock.

Follow the installation guide (in separate booklet), for keeping the door in the right position when locking, it is necessary to install a latching handle set or lever set for the smart deadbolt.

- 3 Pair your lock with your smart phone.

Pair you lock by using the Espirit Lock app for easy management.

- 4 Send eKeys or passcodes.

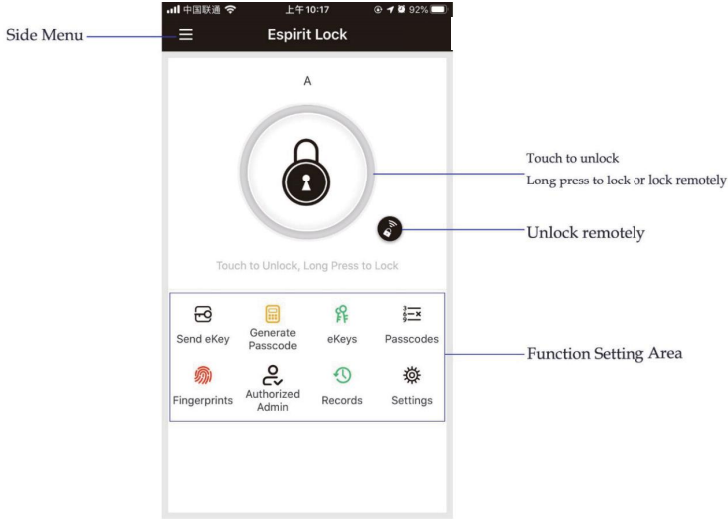
After adding your lock to your home, use the app to send eKey or passcodes to someone who need to access your lock.

- 5 Configure other lock features.

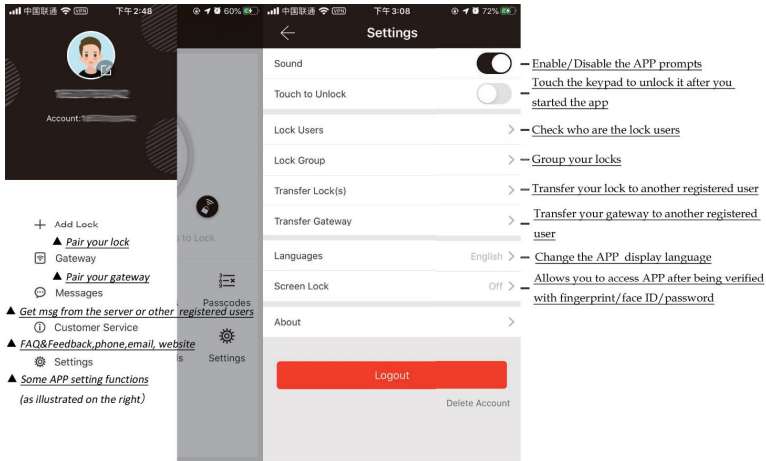
The smart door lock includes many features that you can configure by using the Espirit Lock app.

CONFIGURE YOUR LOCK ON THE APP

1 HOME PAGE



2 SIDE MENU



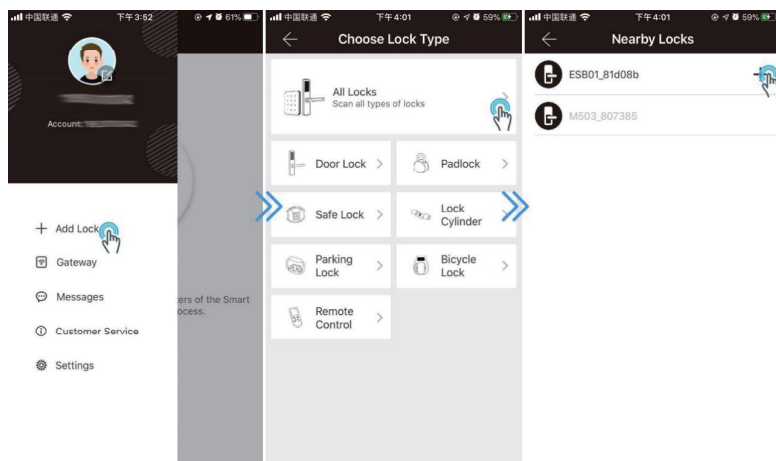
CONFIGURE YOUR LOCK ON THE APP

3 PAIR YOUR LOCK

- A. When there isn't a Bluetooth administrator on your lock (Initial or initialized status).
- B. **When there is a Bluetooth administrator on your lock.** You can input **EE-83-E-Admin Passcode-E** on the keypad to initialize your lock, then add a new Bluetooth administrator to the lock on the APP.

Start to pair your lock:

Register your account and login, turn on Bluetooth on your phone, start to pair your lock by following steps



Notes: Once you paired your lock with the APP, the initial admin passcode will be changed automatically, you can find and change it by yourself in lock **Settings-Basics-Admin Passcode**.

CONFIGURE YOUR LOCK ON THE APP

4 SEND EKEY

E-Key is a virtual key that allows you to authorize someone who can access your lock, there're different E-Keys for different needs. The E-Key recipient should be a registered user, you can send E-Key by following the hints on the APP.

Send eKey

TimedPermanentOne-timeRecurring

Recipient

Name

Start Time

End Time

Allow Remote Unlocking

Authorized Admin

Send

Authorize the receiver to be a sub-administrator

TimedPermanentOne-timeRecurring

Recipient

Name

Start Time

End Time

Allow Remote Unlocking

Authorized Admin

TimedPermanentOne-timeRecurring

Recipient

Name

Allow Remote Unlocking

Authorized Admin

TimedPermanentOne-timeRecurring

Recipient

Name

Validity Period

Allow Remote Unlocking

5 GENERATE PASSCODE

You can generate diffident passcode for different needs by following the hints on the APP.

Generate Passcode

PermanentTimedOne-timeEraseCustom

Name

Generate

PermanentTimedOne-timeEraseCustom

Name

Generate

PermanentTimedOne-timeEraseCustom

Name

Generate

PermanentTimedOne-timeEraseCustom

Name

Generate

CONFIGURE YOUR LOCK ON THE APP

Permanent Timed **One-time** Erase Custom

Name

Enter a name for this passcode

This Passcode MUST BE used within 6 Hours from the Current Time or it will be SUSPENDED for Security Reasons. This Passcode can ONLY be used ONCE.

Generate

Permanent Timed One-time **Erase** Custom

Name

Enter a name for this passcode

This Passcode is VALID for 24 Hours from the Current Time. Caution - All Passcodes used on this Lock will be DELETED on using this Passcode

Generate

Permanent Timed One-time Erase **Custom** Recu

Permanent

☐

Start Time

2020-05-26 16:00

End Time

2020-05-26 16:00

Name

Enter a name for this passcode

Passcode

4 - 9 Digits in length

You can Configure the Customized Passcode via Bluetooth or Remotely via a Gateway.

Set Passcode

Timed One-time Erase Custom **Recurring**

Mode

Weekend

Start Time

16:00

End Time

17:00

Name

Enter a name for this passcode

This Passcode MUST BE used at least Once, within 24 Hours, after the Start Date and Time or it will be SUSPENDED for Security Reasons.

Generate

6 E-KEY MANAGEMENT

Clear ekeys

Reset ekeys

Send ekey

eKeys

Pat 2020.05.26 15:51

Freeze/De-Authorize

Edit Name

Change Validity

Check Records

eKey Info

Name

Pat

Validity Period

2020.05.26 15:51 2022.05.26 15:51

Recipient

19822898433

Issued by

18520783042

Time Issued

2020-05-26 15:51:19

Records

Check Records

Delete

Delete this eKey

7 PASSCODES MANAGEMENT

Reset Passcode

Generate Passcode

Upload Passcode

Passcodes

Jennifer 2020.05.26 16:22 Permanent

Pat 2020.05.26 15:51 Permanent

Send passcode via SMS/Email/Messenger/Whatsapp

Reset Password

Edit Name

Change Validity

Check records

Passcode Info

Passcode

81816648

Name

Pat

Validity Period

Permanent

Issued by

18520783042

Time Issued

2020-05-26 16:21:56

Records

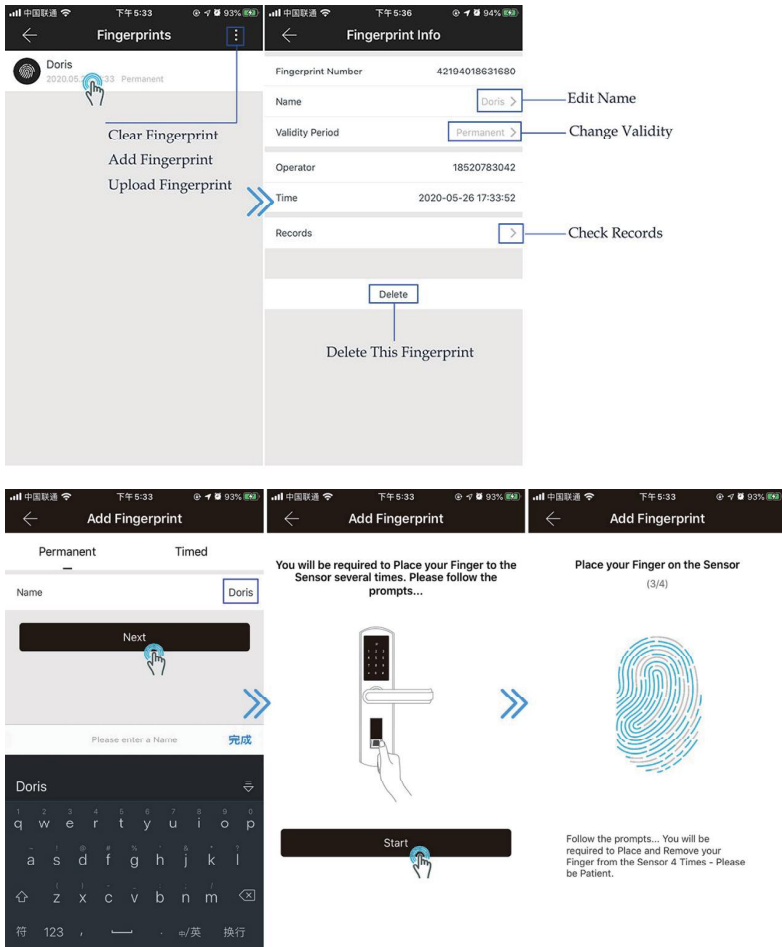
Check records

Delete

Delete This Passcode

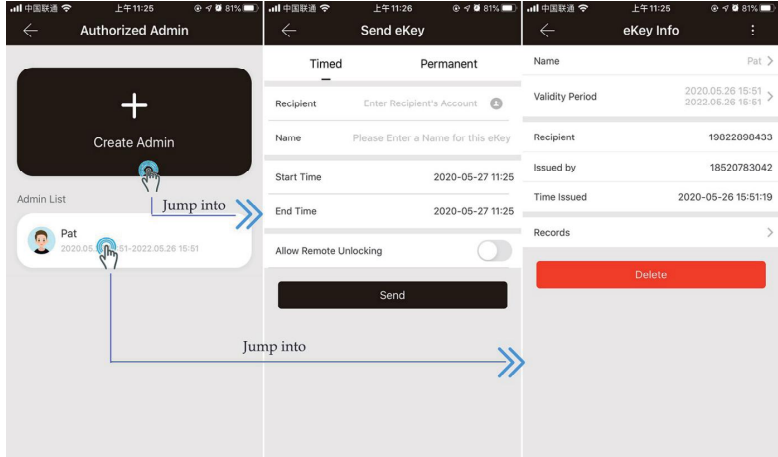
CONFIGURE YOUR LOCK ON THE APP

8 FINGERPRINT MANAGEMENT(For fingerprint version only)

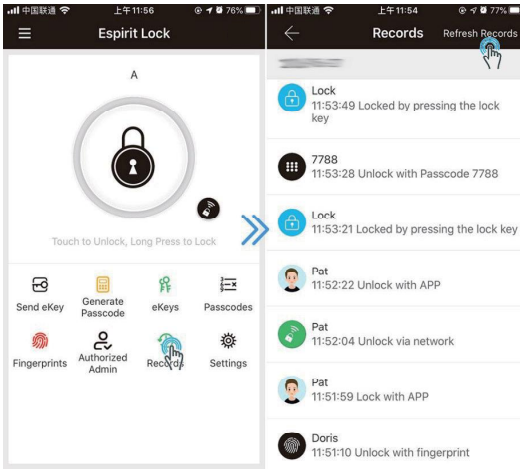


CONFIGURE YOUR LOCK ON THE APP

9 AUTHORIZED ADMIN MANAGEMENT

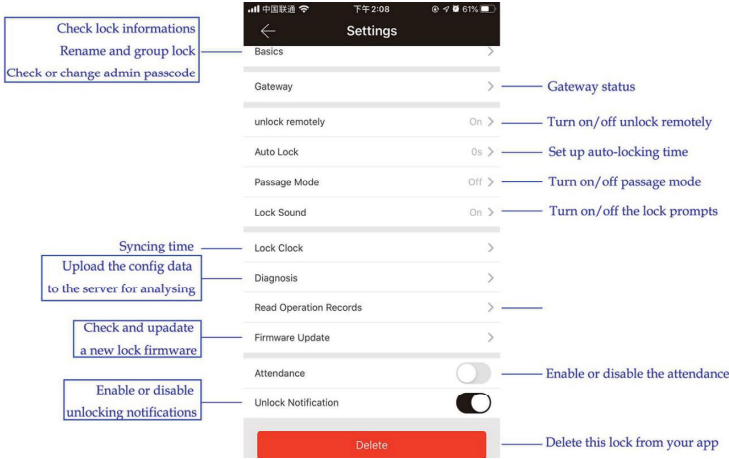


10 CHECK AND REFRESH LOCKING&UNLOCKING RECORDS



CONFIGURE YOUR LOCK ON THE APP

11 LOCK SETTINGS



CONFIGURE YOUR LOCK ON THE KEYPAD

We recommend using the Espirit Lock app to program your lock. If you don't want to app to operate the lock, you can use the manual programming instructions.

- Notes:**
- ★ All passcodes and admin passcode must be 6~9 digits in length; If you make a mistake during programming, press E button twice to start over.
 - ★ The data that was set or occurred on the keypad only can be uploaded and synced from your lock in the Bluetooth connection range or you already paired a gateway that allows you upload and sync it remotely.

Programming Descriptions	Manual Programming Procedures
Add a new administrator	Enter EE-83-E-Admin Passcode-E, pair the lock on the app, once a new administrator was added, all previous added admin passcode, passcodes and fingerprints will be deleted automatically.
Generate a passcode or fingerprint	Enter EE-85-E-Admin Passcode-E-Passcode-E-Passcode-E; Enter EE-85-E-Admin Passcode-E, touch the fingerprint reader with your finger 4 times, it will generate a permanent passcode or fingerprint
Clear all passcodes or fingerprints	Enter EE-71-E-Admin Passcode-E, all previous added passcode will be deleted. Enter EE-70-E-Admin Passcode-E, all previous added fingerprints will be deleted.
Change a passcode	Enter EE-10-E-Passcode-E-New Passcode-E-New Passcode-E, success.
Enabled/Disable auto-lock	Enter EE-21-E-Admin Passcode-E-Time Length (0 or 5~999 Secs, 0 means turn off this function, 5~999 means it will lock on the setting time)-E.

LOCK AND UNLOCK

LOCK	On the keypad	1.One touch C button to lock it quickly;
	On the APP	2.Long press the big lock icon;
		3.If "Auto Lock" is on, it will lock on the setting time automatically.
UNLOCK	On the keypad	1.Input "Passcode-E" or "Random code+Passcode+Random code-E" (The total length is max.16 digits) to unlock it.
		2.With fingerprints
	On the APP	1.Short press the big lock icon;
		2.If "Touch to unlock" is enabled, open the APP, then just one touch on the keypad directly instead of pressing the big lock icon to unlock it.

KEYPAD LOCKOUT

- A. The keypad will be disabled for 5 minutes after 5 times consecutive wrong entries. During the lockout period, the light will flash quickly after each pressing. Unlocking with App is still functional in this case, and the keypad will be back to normal once the lock is unlocked successfully with the App;
- B. The keypad will be reactivated after 5 minutes lockout, then the user can continue to input passcode on the keypad;
- C. However, each 5 times consecutive entries will result in 5 minutes keypad lockout.

LOW BATTERY WARNING

If the battery is low, the keypad will flash quickly for a second when it's activated. Also, you can check the battery volume in "Settings-Basics-Battery" on the APP

RESTORE FACTORY SETTINGS

Both on the keypad and app, you are not able to do any operations to the lock, the lock system crashed unexpectedly. Please restore factory settings, load the batteries and press RESET button on the circuit board over 3 seconds until you heard 2 short beeps.

FCC Radiation Exposure Statement:

This equipment complies with FCC radiation exposure limits set forth for an uncontrolled environment. This equipment should be installed and operated with minimum distance 20cm between the radiator & your body.

FCC Warning

This device complies with Part 15 of the FCC Rules. Operation is subject to the following two conditions:

(1) This device may not cause harmful interference, and (2) this device must accept any interference received, including interference that may cause undesired operation.

NOTE 1: This equipment has been tested and found to comply with the limits for a Class B digital device, pursuant to part 15 of the FCC Rules. These limits are designed to provide reasonable protection against harmful interference in a residential installation. This equipment generates uses and can radiate radio frequency energy and, if not installed and used in accordance with the instructions, may cause harmful interference to radio communications. However, there is no guarantee that interference will not occur in a particular installation. If this equipment does cause harmful interference to radio or television reception, which can be determined by turning the equipment off and on, the user is encouraged to try to correct the interference by one or more of the following measures:

- Reorient or relocate the receiving antenna.
- Increase the separation between the equipment and receiver.
- Connect the equipment into an outlet on a circuit different from that to which the receiver is connected.
- Consult the dealer or an experienced radio/TV technician for help.

NOTE 2: Any changes or modifications to this unit not expressly approved by the party responsible for compliance could void the user's authority to operate the equipment.



www.espritech.com