

# User Manual



## Smart LED Bulb

### No.1 Download and Install APP

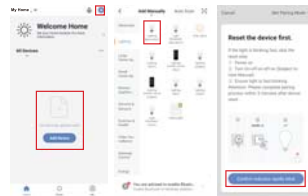
Use your phone to scan the QR code below or search 'Smart Life' in application market to download and install the App.



### No.2 Add Device

Ensure your smart bulb is installed properly and switched on.

1. Light bulb will start to blink as default when it is lit for the first time. Ensure the light bulb is rapidly blinking (**2 times per second**)
2. Click 'Add Device' or '+', choose 'Add manually'.
3. Click 'Lighting(BLE+Wi-Fi)', location and Bluetooth access needed.
4. If light is not blinking or blinking slowly (**1 time every 3 seconds**), click 'help' to view operation processes or follow the instructions regarding 'How to set light to blinking mode?'



Picture 1

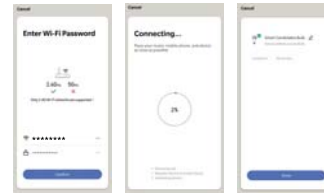
Picture 2

Picture 3

-1-

### No.3 Add Device - Enter Wi-Fi Password

1. Select the Wi-Fi which your phone is connected to.
2. Please enter Wi-Fi password and confirm the connection.



Picture 1

Picture 2

Picture 3

### Network Connection Process

If smart bulb is connecting to the network, App shows as picture 2. Once smart bulb successfully connected to the network, App shows as picture 3.

### Mark:

If App can not discover the bulb automatically, please switch it On/Off for 5 times by following: On-Off-On-Off-On until light begins to blink quickly into reset mode. Then automatically add the bulb again. If bulb stops blinking, please turn On/Off the bulb for 5 times and repeat.

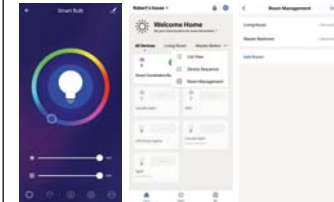
-2-

### No.4 Control Device

1. After bulb successfully connected, rename the bulb as you wish, then find smart bulb on the home page of Smart Life App.
2. Click the bulb icon to have full control of the bulbs.

### Note:

1. When device is online, it supports shortcut operations on the lighting home page.
2. When device is offline, it displays 'Off line' and can't be controlled.
3. Multiple bulbs can be connected at one time and grouped easily.



Picture 1

Picture 2

Picture 3

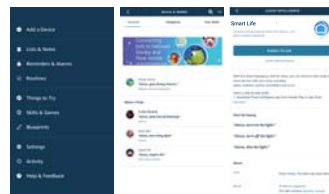
### Remark:

1. The pictures used in this manual are Android App interface, iOS version is a bit different.
2. Product and software update periodically, the number and app interface in this manual are only for example. No extra notification on further changes.

-3-

## I Link Smart Life Account to Echo

1. Click 'Skills & Games' on the menu, search 'Smart Life'. Select 'Smart Life' and click to 'Enable' the Smart Life skill.



2. You will be redirected to the account link page. Input your Smart Life account and password, don't forget to select the Country/region. Click 'Link Now' to link your Smart Life account.

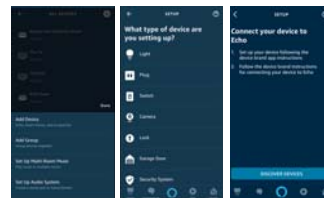


3. Discover Devices  
Echo needs to discover your smart devices before controlling

-4-

them. You can say 'Alexa, discover devices' to Echo. Echo will discover devices which have already been added in the Smart Life app.

You can also click 'Add Devices' to find smart devices. Discovered devices will be displayed in the list.



Note: every time you change the device name on Smart Life app, Echo must re-discover before controlling them.

### 4. Control Devices by Voice Commands

Now you can control your smart devices through Echo.

Speak to Echo like following

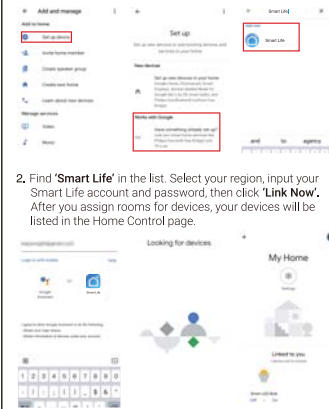
- Alexa, turn on/off bedroom light.
- Alexa, set bedroom light to 50 percent.
- Alexa, brighten/increase bedroom light.
- Alexa, dim/decrease bedroom light.

## II Link Smart Life Account to Google Home

Make sure you have successfully set up Google Home.

1. Click '+' on the menu of Google Home App home page, then click 'Set up device'. Select 'Works with Google'.

-5-



### 3. Control Your Smart Devices through Google Home

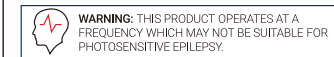
Now you can control your smart devices through Google Home. Take bedroom light as the example, the supported voice commands are as below:

- OK Google, turn on/off bedroom light.
- OK Google, set bedroom light to 50 percent.
- OK Google, brighten bedroom light.
- OK Google, dim bedroom light.
- OK Google, set bedroom light to red.

-6-

## SAFETY INSTRUCTIONS

**TURN POWER OFF** BEFORE INSPECTION, INSTALLATION OR REMOVAL. SUITABLE FOR DAMP LOCATIONS BUT NOT DIRECTLY EXPOSED TO WATER OR WEATHER. THIS DEVICE IS **NOT INTENDED** FOR USE WITH EMERGENCY EXIT FIXTURES OR EMERGENCY EXIT LIGHTS.



**WARNING:** THIS PRODUCT OPERATES AT A FREQUENCY WHICH MAY NOT BE SUITABLE FOR PHOTSENSITIVE EPILEPSY.

**WARNING:** RISK OF ELECTRIC SHOCK. DISCONNECT THE MAIN POWER AT THE FUSE OR CIRCUIT BREAKER BEFORE INSTALLING OR SERVICING THE FIXTURE.

## SPECIFICATIONS

Connection: WiFi

Stand By Power: <1W

WiFi Frequency: 2.4 GHz - 2.48 GHz

Color Temperature: 2700-6500K+RGB

Working Temperature: -40 °C to 40 °C

Power Supply: AC 100 - 240V, 50/60 Hz

WiFi to Device Range 70M Outdoors; 20M Indoors

-7-

## Warning:

This device complies with Part 15 of the FCC Rules. Operation is subject to the following two conditions: (1) this device may not cause harmful interference, and (2) this device must accept any interference received, including interference that may cause undesired operation.

changes or modifications not expressly approved by the party responsible for compliance could void the user's authority to operate the equipment.

NOTE: This equipment has been tested and found to comply with the limits for a Class B digital device, pursuant to Part 15 of the FCC Rules. These limits are designed to provide reasonable protection against harmful interference in a residential installation. This equipment generates, uses and can radiate radio frequency energy and, if not installed and used in accordance with the instructions, may cause harmful interference to radio communications. However, there is no guarantee that interference will not occur in a particular installation. If this equipment does cause harmful interference to radio or television reception, which can be determined by turning the equipment off and on, the user is encouraged to try to correct the interference by one or more of the following measures:

- Reorient or relocate the receiving antenna.
- Increase the separation between the equipment and receiver.
- Connect the equipment into an outlet on a circuit different from that to which the receiver is connected.
- Consult the dealer or an experienced radio/TV technician for help.

NOTE: This device and its antenna(s) must not be co-located or operation in conjunction with any other antenna or transmitter

## RF Exposure Statement

To maintain compliance with FCC's RF Exposure guidelines, This equipment should be installed and operated with minimum distance of 20cm the radiator your body. This device and its antenna(s) must not be co-located or operation in conjunction with any other antenna or transmitter