

# TEST REPORT

Report No.	CISRR250402037
Project No.	CISR250402037
FCC ID	2AYPZ-SUNSAWRF2
Applicant	Sunsa, Inc
Address	11850 West Market Place Suite K, Fulton, Maryland, 20759, United States
Manufacturer	Ningbo Sunfree Motor Technology Co., Ltd.
Address	RM202, No. 418, Qihang North Road, Yinzhou District, Ningbo, China.
Product Name	Remote control
Trade Mark	SUNSA
Model/Type reference	AC2201-01A
Listed Model(s)	AC2201-01* *=A~Z
Standard	Part 15 Subpart C Section 15.231
Test date	April 2, 2025 ~ April 11, 2025
Issue date	April 12, 2025
Test result	<b>Complied</b>

*Rory Huang*

*Genry Long*

Prepared by: Rory Huang

Approved by: Genry Long

*The test results relate only to the tested samples.*

*The test report should not be reproduced except in full without the written approval of Shenzhen Bangce Testing Technology Co., Ltd.*

## Contents

<b>1. REPORT VERSION .....</b>	<b>3</b>
<b>2. SUMMARY OF TEST RESULT .....</b>	<b>4</b>
<b>3. SUMMARY .....</b>	<b>5</b>
3.1. Product Description .....	5
3.2. Radio Specification Description .....	5
3.3. Modification of EUT .....	6
3.4. Testing Site .....	6
3.5. Field Strength Calculation .....	6
3.6. DISTURBANCE Calculation .....	6
<b>4. TEST CONFIGURATION .....</b>	<b>7</b>
4.1. Test frequency list .....	7
4.2. Test mode .....	7
4.3. Support unit used in test configuration and system .....	7
4.4. Test sample information .....	7
4.5. Testing environmental condition .....	8
4.6. Statement of the measurement uncertainty .....	8
4.7. Equipment Used during the Test .....	9
<b>5. TEST CONDITIONS AND RESULTS .....</b>	<b>10</b>
5.1. Antenna Requirement .....	10
5.2. AC Conducted Emission .....	11
5.3. 20 dB Bandwidth .....	12
5.4. Radiated Spurious Emission .....	13
5.5. Transmitter Deactivation Time .....	18
5.6. Duty cycle Factor .....	19
<b>6. TEST SETUP PHOTOS .....</b>	<b>20</b>
<b>7. EXTERNAL AND INTERNAL PHOTOS .....</b>	<b>21</b>
7.1 External photos .....	21
7.2 Internal photos .....	25

## 1. REPORT VERSION

Version No.	Issue date	Description
00	April 12, 2025	Original

## 2. SUMMARY OF TEST RESULT

Report clause	Test Item	Standard Requirement	Result
5.1	Antenna Requirement	15.203	PASS
5.2	AC Conducted Emission	15.207	--
5.3	20 dB Bandwidth	15.231(c)	PASS
5.4	Radiated Spurious Emission	15.231 (a)/15.205/15.209	PASS
5.5	Transmitter Deactivation Time	15.231	PASS
5.6	Duty cycle Factor	15.231	PASS

Note:

- The measurement uncertainty is not included in the test result.

### 3. SUMMARY

#### 3.1. Product Description

Main unit information:	
Product Name:	Remote control
Trade Mark:	SUNSA
Model No.:	AC2201-01A
Listed Model(s):	AC2201-01* *=A~Z
Model difference:	The difference between different models is that in this application, due to different sales channels and different model names.
Power supply:	Input: 3V
Hardware version:	N/A
Software version:	N/A

#### 3.2. Radio Specification Description

Technology:	SRD
Modulation:	FSK
Operation frequency:	433.92MHz
Occupied Bandwidth:	118.42kHz
Keying:	Manual
Type of Information:	Control
Channel Number:	1
Antenna type:	PCB Antenna
Antenna gain:	3dBi

**NOTE:**

--This device is automatic transmission under 15.231(a).

### 3.3. Modification of EUT

No modifications are made to the EUT during all test items.

### 3.4. Testing Site

Laboratory Name	Shenzhen Bangce Testing Technology Co., Ltd.
Laboratory Location	101, building 10, Yunli Intelligent Park, Shutianpu community, Matian Street, Guangming District, Shenzhen, Guangdong, China
FCC registration number	736346

### 3.5. Field Strength Calculation

The field strength is calculated by adding the Antenna Factor and Cable Factor and subtracting the Amplifier Gain and Duty Cycle Correction Factor (if any) from the measured reading. The basic equation with a sample calculation is as follows:

$$FS \text{ (dBuV/m)} = RA \text{ (dBuV)} + AF \text{ (dB/m)} + CL \text{ (dB)} - AG \text{ (dB)}$$

Where FS = Field Strength	CL = Cable Attenuation Factor (Cable Loss)
RA = Reading Amplitude	AG = Amplifier Gain
AF = Antenna Factor	

### 3.6. DISTURBANCE Calculation

The AC mains conducted disturbance is calculated by adding the 10dB Pulse Limiter and Cable Factor and Duty Cycle Correction Factor (if any) from the measured reading. The basic equation with a sample calculation is as follows:

$$CD \text{ (dBuV)} = RA \text{ (dBuV)} + PL \text{ (dB)} + CL \text{ (dB)}$$

Where CD = Conducted Disturbance	CL = Cable Attenuation Factor (Cable Loss)
RA = Reading Amplitude	PL = 10 dB Pulse Limiter Factor

## 4. TEST CONFIGURATION

### 4.1. Test frequency list

Channel	Frequency (MHz)
CH1	433.92

### 4.2. Test mode

For RF test items:		
Test Item	Test Mode	Modulation
Conducted test item	TX-CH1	FSK
	Normal link	--
	Charging	--
Radiated test item	TX-CH1	FSK
	Normal link	--
	Charging	--

Remark:

- The EUT in each of three orthogonal axis emissions had been tested, but only the worst case (X axis) data recorded in the report.

### 4.3. Support unit used in test configuration and system

The EUT has been associated with peripherals and configuration operated in a manner tended to maximize its emission characteristics in a typical application.

The following peripheral devices and interface cables were connected during the measurement:

Item	Equipment name	Trade Name	Model No.
1	--	--	--

### 4.4. Test sample information

Type	sample no.
Engineer sample	CISR250402037-1#
Normal sample	CISR250402037-2#

#### 4.5. Testing environmental condition

Type	Requirement	Actual
Temperature:	15~35°C	25°C
Relative Humidity:	25~75%	50%
Air Pressure:	860~1060mbar	1000mbar

#### 4.6. Statement of the measurement uncertainty

No.	Test Items	Measurement Uncertainty
1	AC Conducted Emission	1.63dB
2	Power Spectral Density	1.34dB
3	20dB Bandwidth	0.002%
4	Duty cycle	-
5	Conducted Band Edge and Spurious Emission	1.93dB
6	Radiated Band Edge Emission	3.76dB for 30MHz-1GHz 3.80dB for above 1GHz
7	Radiated Spurious Emission	3.76dB for 30MHz-1GHz 3.80dB for above 1GHz

This uncertainty represents an expanded uncertainty expressed at approximately the 95% confidence level using a coverage factor of  $k=1.96$ .



#### 4.7. Equipment Used during the Test

Equipment	Manufacture	Model No.	Serial No.	Last cal.	Cal Interval
9*6*6 anechoic chamber	SKET	9.3*6.3*6	N/A	2024.09.01	3Year
Spectrum analyzer	Agilent	N9020A	MY50530263	2025.01.08	1Year
Receiver	ROHDE&SCHWARZ	ESCI	100853	2025.01.08	1Year
Spectrum analyzer	R&S	FSV-40N	/	2025.01.08	1Year
Bilog Antenna	Schwarzbeck	VULB 9163	1463	2025.01.08	2Year
Horn Antenna	SCHWARZBECK	BBHA 9120 D	2487	2025.01.08	2Year
Active Loop Antenna	SCHWARZBECK	FMZB 1519B	/	2025.01.08	2Year
RF Cable	Tonscend	Cable 1	/	2025.01.08	1Year
RF Cable	Tonscend	Cable 2	/	2025.01.08	1Year
RF Cable	SKET	Cable 3	/	2025.01.08	1Year
Pre-amplifier	Tonscend	TAP9K3G32	AP21G806153	2025.01.08	1Year
Pre-amplifier	Tonscend	TAP01018050	AP22E806229	2025.01.08	1Year
L.I.S.N.#1	Schwarzbeck	NSLK8127	/	2025.01.08	1Year
L.I.S.N.#2	ROHDE&SCHWARZ	ENV216	/	2025.01.08	1Year
Horn Antenna	SCHWARZBECK	BBHA9170	1130	2025.01.08	2 Year
Preamplifier	Tonscend	TAP18040048	AP21C806126	2025.01.08	1Year
variable-frequency power source	Pinhong	PH1110	/	2025.01.08	1Year
6dB Attenuator	SKET	DC-6G	/	N/A	N/A
Artificial power network	Schwarzbeck	NSLK8127	8127-01096	2025.01.08	1Year
EMI Test Receiver	Rohde&schwarz	ESCI7	100853	2025.01.08	1Year
8-wire Impedance Stabilization Network	Schwarzbeck	NTFM 8158	8158-00337	2025.01.08	1Year
Artificial power network	Schwarzbeck	ENV216	/	2025.01.08	1Year
Antenna tower	SKET	Bk-4AT-BS	AT2021040101-V1	N/A	N/A

## **5. TEST CONDITIONS AND RESULTS**

### **5.1. Antenna Requirement**

#### Standard Applicable

#### **FCC CFR Title 47 Part 15 Subpart C Section 15.203:**

An intentional radiator shall be designed to ensure that no antenna other than that furnished by the responsible party shall be used with the device. The use of a permanently attached antenna or of an antenna that uses a unique coupling to the intentional radiator, the manufacturer may design the unit so that a broken antenna can be replaced by the user, but the use of a standard antenna jack or electrical connector is prohibited.

#### **FCC CFR Title 47 Part 15 Subpart C Section 15.247(c) (1) (I):**

(i) Systems operating in the 2400-2483.5 MHz band that is used exclusively for fixed. Point-to-point operations may employ transmitting antennas with directional gain greater than 6dBi provided the maximum conducted output power of the intentional radiator is reduced by 1 dB for every 3 dB that the directional gain of the antenna exceeds 6dBi.

#### Description

The EUT antenna is PCB Antenna (3dBi), the directional gain of the antenna less than 6dBi. It comply with the standard requirement. In case of replacement of broken antenna the same antenna type must be used. Antenna structure please refer to the EUT internal photographs antenna photo.

Remark: The antenna gain is provided by the customer, if the data provided by the customer is not accurate, Shenzhen Bangce Testing Technology Co., Ltd. does not assume any responsibility.

## 5.2. AC Conducted Emission

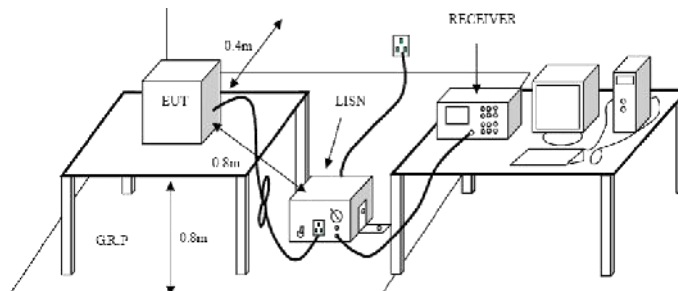
Limit:

**FCC CFR Title 47 Part 15 Subpart C Section 15.207**

Frequency range (MHz)	Limit (dBuV)	
	Quasi-peak	Average
0.15-0.5	66 to 56*	56 to 46*
0.5-5	56	46
5-30	60	50

\* Decreases with the logarithm of the frequency.

Test configuration:



Test procedure:

1. The EUT was setup according to ANSI C63.10 requirements.
2. The EUT was placed on a platform of nominal size, 1 m by 1.5 m, raised 80 cm above the conducting ground plane. The vertical conducting plane was located 40 cm to the rear of the EUT. All other surfaces of EUT were at least 80 cm from any other grounded conducting surface.
3. The EUT and simulators are connected to the main power through a line impedances stabilization network (LISN). The LISN provides a 50 ohm /50uH coupling impedance for the measuring equipment.
4. The peripheral devices are also connected to the main power through a LISN. (Refer to the block diagram of the test setup and photographs)
5. Each current-carrying conductor of the EUT power cord, except the ground (safety) conductor, was individually connected through a LISN to the input power source.
6. The excess length of the power cord between the EUT and the LISN receptacle were folded back and forth at the center of the lead to form a bundle not exceeding 40 cm in length.
7. Conducted emissions were investigated over the frequency range from 0.15MHz to 30MHz using a receiver bandwidth of 9 kHz.
8. During the above scans, the emissions were maximized by cable manipulation.

Test mode:

Refer to the clause 4.2

Result:

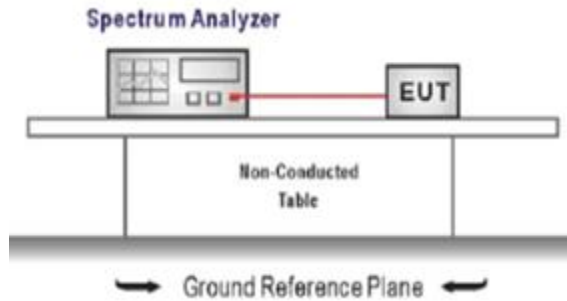
**Not Applicable**

### 5.3. 20 dB Bandwidth

Limit:

The bandwidth of the emission shall be no wider than 0.25% of the center frequency for devices operating above 70 MHz and below 900 MHz. Bandwidth is determined at the points 20 dB down from the modulated carrier.

Test configuration:



Test procedure:

1. The transmitter output was connected to the spectrum analyzer through an attenuator, the path loss was compensated to the results for each measurement.
2. Set to the maximum power setting and enable the EUT transmit continuously
3. Use the following spectrum analyzer settings:  
Span = approximately 2 to 3 times the 20 dB bandwidth, centered on a Test channel  
RBW  $\geq$  1% of the 20 dB bandwidth, VBW  $\geq$  RBW  
Sweep = auto, Detector function = peak, Trace = max hold
4. Measure and record the results in the test report.

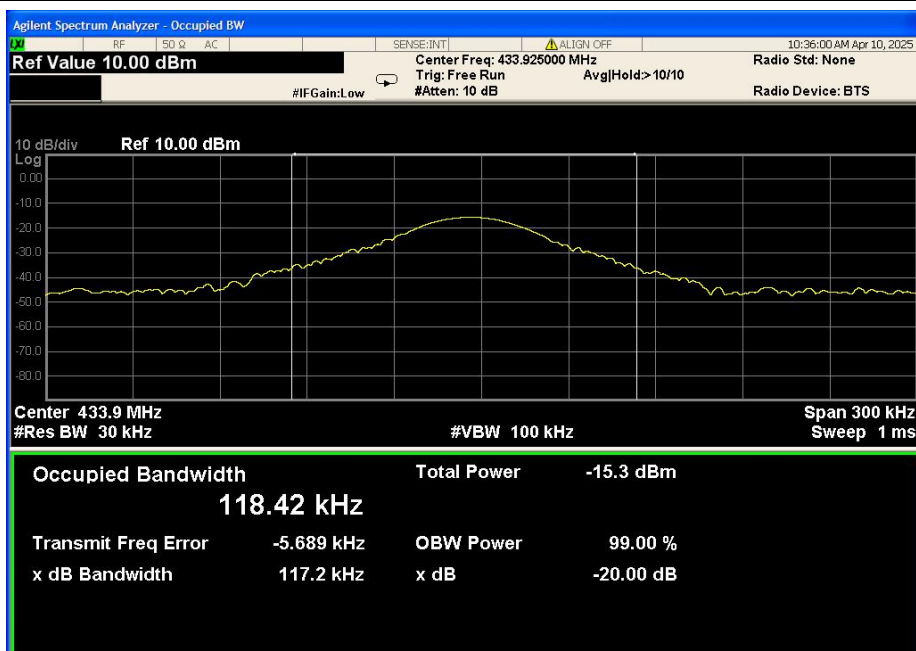
Test mode:

Refer to the clause 4.2

Result:

**Passed**

Center Frequency of operation(MHz)	Measured 20dB Bandwidth(kHz)	Limit(kHz)	Result
433.92	117.2	1084.75	PASS



### 5.4. Radiated Spurious Emission

Limit:

#### FCC CFR Title 47 Part 15 Subpart C Section 15.209

Frequency	Limit (dBuV/m)	Value
0.009 MHz ~0.49 MHz	2400/F(kHz) @300m	Quasi-peak
0.49 MHz ~ 1.705 MHz	24000/F(kHz) @30m	Quasi-peak
1.705 MHz ~30 MHz	30 @30m	Quasi-peak

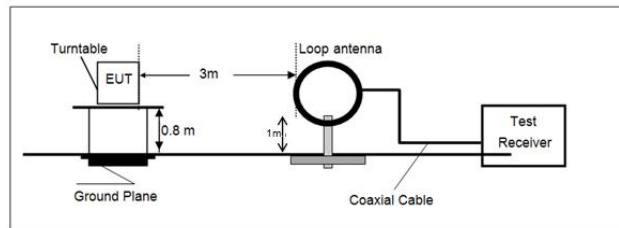
Limit dBuV/m @3m = Limit dBuV/m @300m + 40\*log(300/3)

Limit dBuV/m @3m = Limit dBuV/m @30m + 40\*log(30/3)

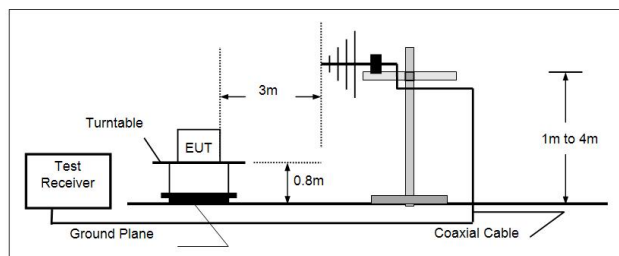
Frequency	Limit (dBuV/m @3m)	Value
30MHz~88MHz	40.00	Quasi-peak
88MHz~216MHz	43.50	Quasi-peak
216MHz~960MHz	46.00	Quasi-peak
960MHz~1GHz	54.00	Quasi-peak
Above 1GHz(Field strength of fundamental)	80.83	Average
	100.83	Peak
Above 1GHz(Field strength of harmonics)	60.83	Average
	80.83	Peak

Test configuration:

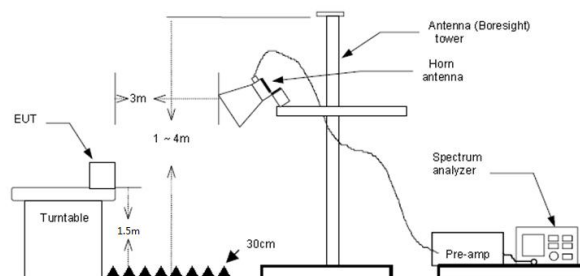
9kHz~30MHz



30 MHz ~ 1 GHz



Above 1 GHz



Test procedure:

1. The EUT was setup and tested according to ANSI C63.10.
2. The EUT is placed on a turn table which is 0.8 meter above ground for below 1 GHz, and 1.5 m for above 1 GHz. The turn table is rotated 360 degrees to determine the position of the maximum emission level.
3. The EUT was set 3 meters from the receiving antenna, which was mounted on the top of a variable height antenna tower.
4. For each suspected emission, the EUT was arranged to its worst case and then tune the Antenna tower (from 1 m to 4 m) and turntable (from 0 degree to 360 degrees) to find the maximum reading. A pre-amp and a high pass filter are used for the test in order to get better signal level to comply with the guidelines.
5. Set to the maximum power setting and enable the EUT transmit continuously.
6. Use the following spectrum analyzer settings
  - a) Span shall wide enough to fully capture the emission being measured;
  - b) Below 1 GHz:  
RBW=120 kHz, VBW=300 kHz, Sweep=auto, Detector function=peak, Trace=max hold;  
If the emission level of the EUT measured by the peak detector is 3 dB lower than the applicable limit, the peak emission level will be reported. Otherwise, the emission measurement will be repeated using the quasi-peak detector and reported.
  - c) Set RBW=1MHz, VBW=3MHz for >1GHz, Sweep time=auto, Detector=peak, Trace=max hold for Peak measurement
  - d) Set RBW=1MHz, VBW=3MHz for >1GHz, Sweep time=auto, Detector=peak, Trace=max hold for Peak measurement

Test mode:

Refer to the clause 4.2

Result:**Passed**

## Note:

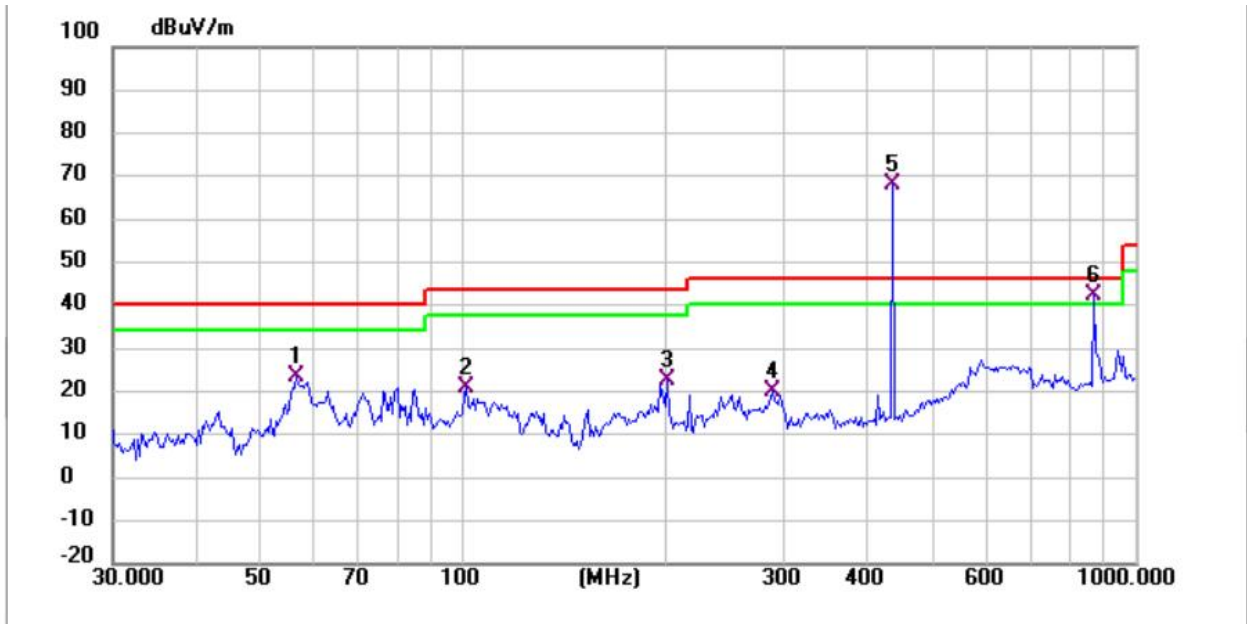
- 1)  $Level = Reading + Factor/Transd$ ;  $Factor/Transd = Antenna\ Factor + Cable\ Loss - Preamp\ Factor$
- 2)  $Margin = Limit - Level$
- 3) Average measurement was not performed if peak level is lower than average limit(54 dBuV/m) for above 1GHz.
- 4) The other emission levels were very low against the limit.
- 5) This test was performed with EUT in X, Y, Z position and the worse case was found when EUT in X position.

**For 9 kHz ~ 30 MHz**

The EUT was pre-scanned this frequency band, found the radiated level 20dB lower than the limit, so don't show data on this report.

**For 30 MHz ~ 1000 MHz**

Polarization: Horizontal

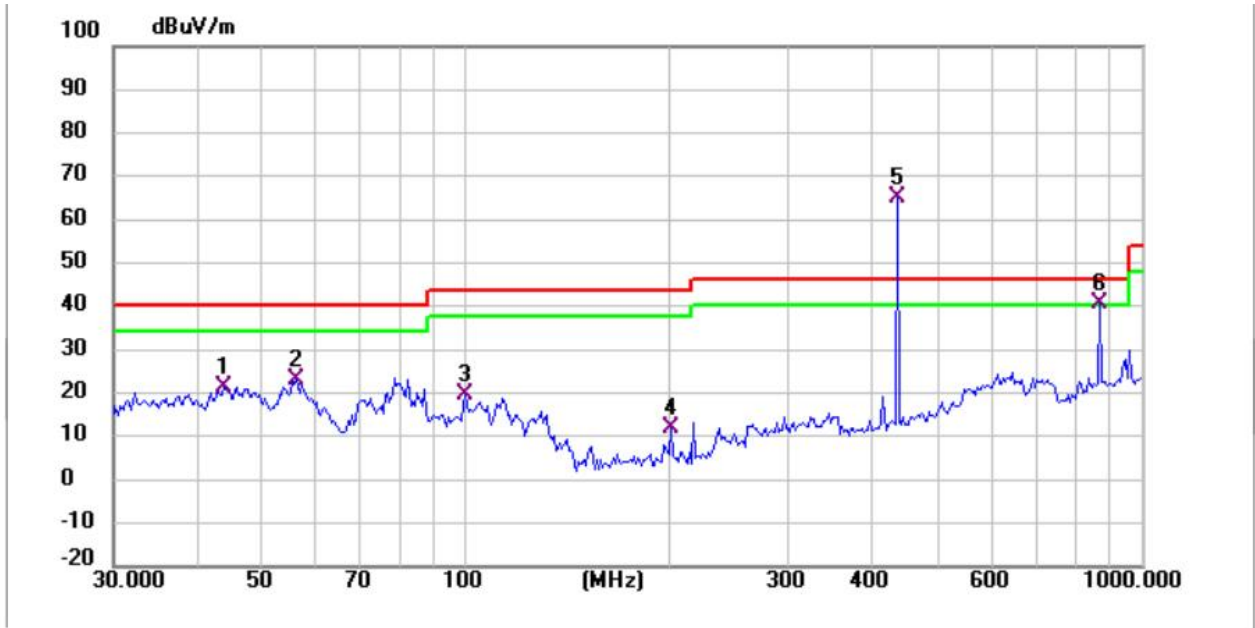


No.	Frequency (MHz)	Reading (dBuV)	Factor (dB/m)	Level (dBuV/m)	Limit (dBuV/m)	Margin (dB)	Detector
1	56.395	53.96	-30.40	23.56	40.00	-16.44	QP
2	100.934	51.73	-30.84	20.89	43.50	-22.61	QP
3	200.688	52.37	-29.83	22.54	43.50	-20.96	QP
4	289.002	47.34	-27.47	19.87	46.00	-26.13	QP
5 *	433.925	92.14	-23.88	68.26	100.83	-32.57	PK
6 !	869.130	57.43	-15.25	42.18	80.83	-38.65	PK

**Fundamental and Harmonics Result**

Frequency (MHz)	Peak Level (dB $\mu$ V/m)	AV Factor(dB $\mu$ V/m) (see Section 5.4)	Average Level (dB $\mu$ V/m)	Limit(dB $\mu$ V/m) (Peak)	Limit(dB $\mu$ V/m) (Average)	Conclusion
433.925	92.14	-8.82	83.32	100.82	80.82	PASS
869.130	57.43	-8.82	48.61	80.82	60.82	PASS

Polarization: Vertical



No.	Frequency (MHz)	Reading (dBuV)	Factor (dB/m)	Level (dBuV/m)	Limit (dBuV/m)	Margin (dB)	Detector
1	43.812	50.96	-29.67	21.29	40.00	-18.71	QP
2	56.001	53.39	-30.37	23.02	40.00	-16.98	QP
3	99.528	50.43	-30.98	19.45	43.50	-24.05	QP
4	200.688	41.73	-29.83	11.90	43.50	-31.60	QP
5 *	433.925	89.00	-23.88	65.12	100.83	-35.71	PK
6 !	869.130	55.99	-15.25	40.74	80.83	-40.09	PK

Fundamental and Harmonics Result

Frequency (MHz)	Peak Level (dB $\mu$ V/m)	AV Factor(dB $\mu$ V/m) (see Section 5.4)	Average Level (dB $\mu$ V/m)	Limit(dB $\mu$ V/m) (Peak)	Limit(dB $\mu$ V/m) (Average)	Conclusion
433.925	89.00	-8.82	80.18	100.82	80.82	PASS
869.130	55.99	-8.82	47.17	80.82	60.82	PASS



**For 1 GHz ~ 4 GHz**

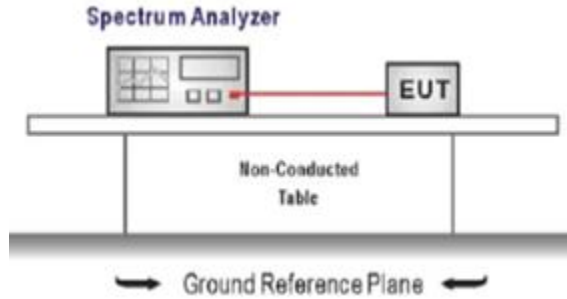
Test channel: 433.92MHz									
Freq. (MHz)	Reading (dBuv)	Ant. Factor (dB/m)	Cable Factor (dB)	Pre-amplifier (dB)	Correction Factor (dB/m)	Limit (dBuV/m)	Margin (dB)	Remark	Polarity
1204.00	64.08	31.97	4.11	38.47	-2.39	74	12.31	Peak	Horizontal
1204.00	49.46	31.97	4.11	38.47	-2.39	54	6.93	Average	Horizontal
1204.00	64.71	31.97	4.11	38.47	-2.39	74	11.68	Peak	Vertical
1204.00	49.59	31.97	4.11	38.47	-2.39	54	6.80	Average	Vertical

### 5.5. Transmitter Deactivation Time

Limit:

A manually operated transmitter shall employ a switch that will automatically deactivate the transmitter within not more than 5 seconds of being released.

Test configuration:



Test procedure:

Maximizing procedure was performed on the highest emissions to ensure that the EUT complied with all installation combinations.

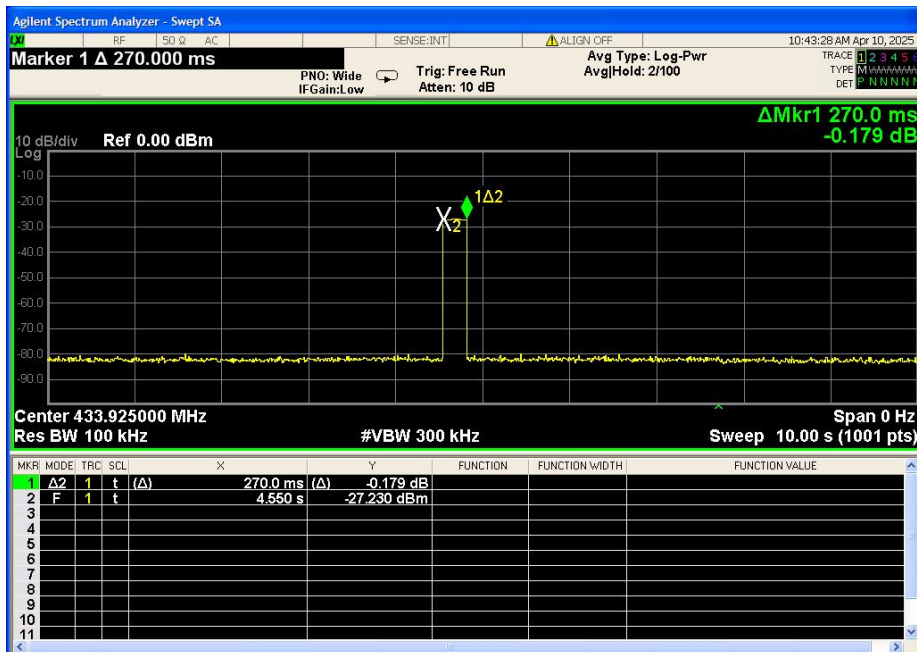
Test mode:

Refer to the clause 4.2

Result:

**Passed**

Test Results			
Frequency (MHz)	Activation Time(s)	Limit: not more than 5 seconds of being released (s)	Conclusion
433.92	0.27	5	PASS

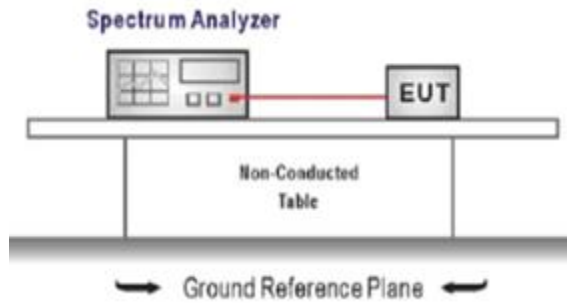


### 5.6. Duty cycle Factor

Limit:

No dedicated limit specified in the Rules.

Test configuration:



Test procedure:

1. Place the EUT on the table and set it in transmitting mode.
2. Remove the antenna from the EUT and then connect a low loss RF cable from the antenna port to the spectrum analyzer.
3. Set centre frequency of spectrum analyzer=operating frequency.
4. Set the spectrum analyzer as RBW=100kHz, VBW=300kHz, Span=0Hz, Adjust Sweep=Auto.
5. Repeat above procedures until all frequency measured was complete.

Test mode:

Refer to the clause 4.2

Result:

**Passed**

#### Test Data

$$T_{on} = 0.5936 \times 11 + 0.2226 \times 14 = 9.646 \text{ (ms)}$$

$$T_p = 26.64 \text{ (ms)}$$

$$\text{The duty cycle} = 9.646 / 26.64 = 36.21\%$$

$$\text{Average Correction Factory} = 20 \log (T_{on}/T_p) = 20 \log (0.3621) = -8.82 \text{ dB}$$

Test plot of Duty cycle

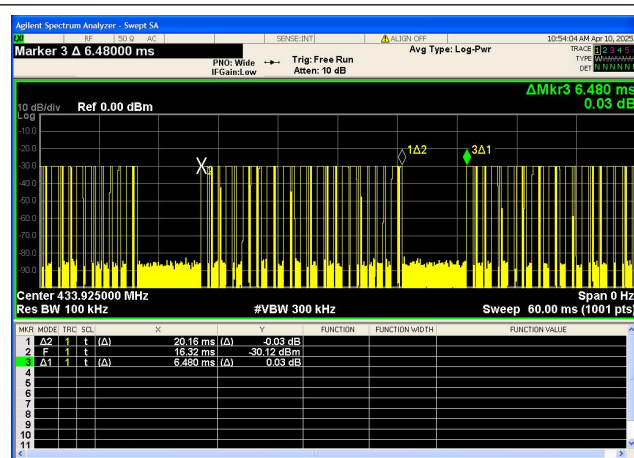


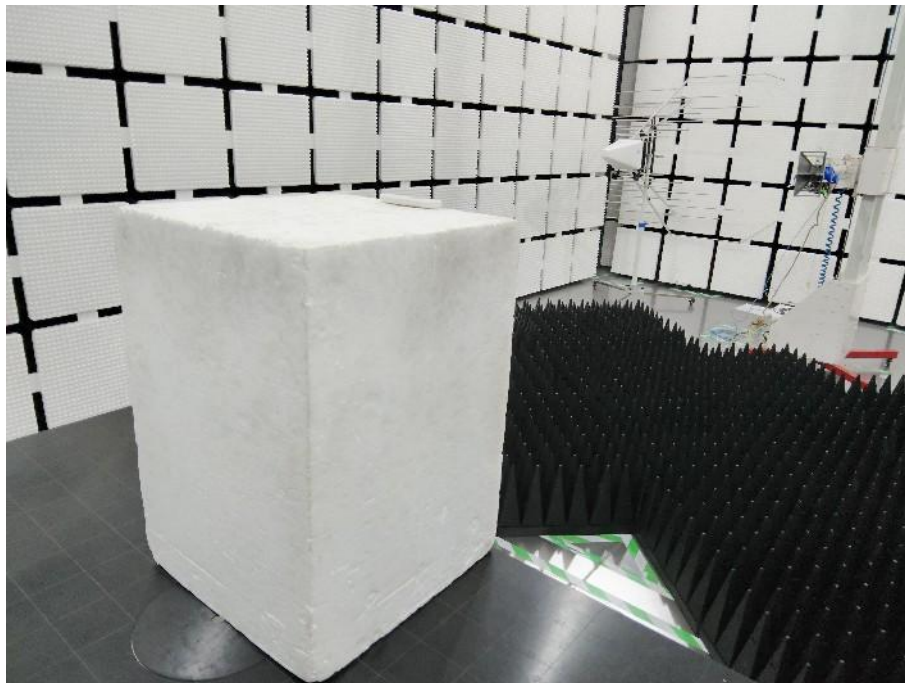
Fig.1



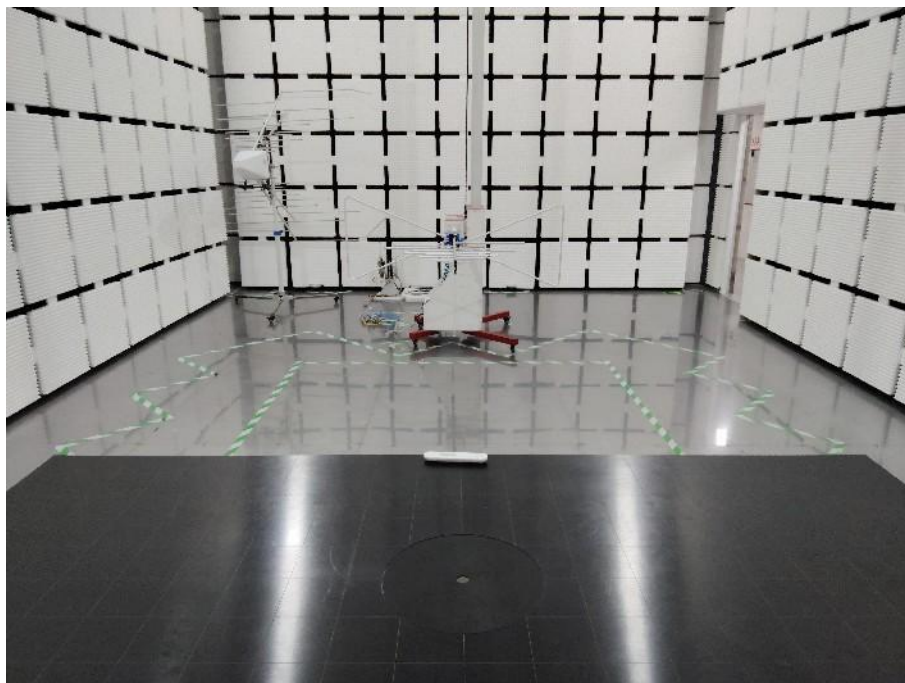
Fig.2

## 6. TEST SETUP PHOTOS

Radiated Spurious Emission (Above 1GHz)

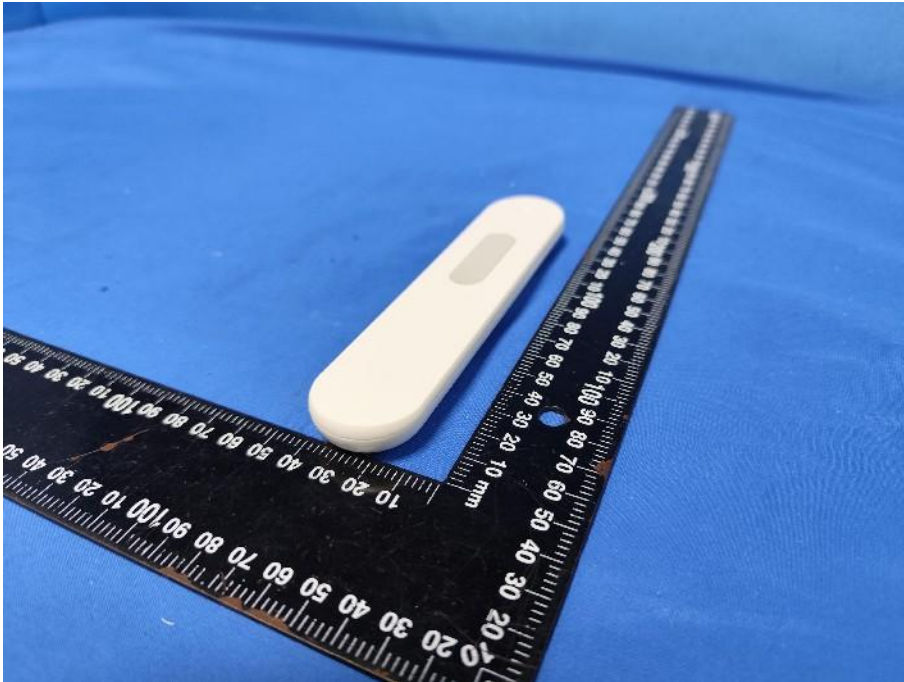


Radiated Spurious Emission (below 1GHz)

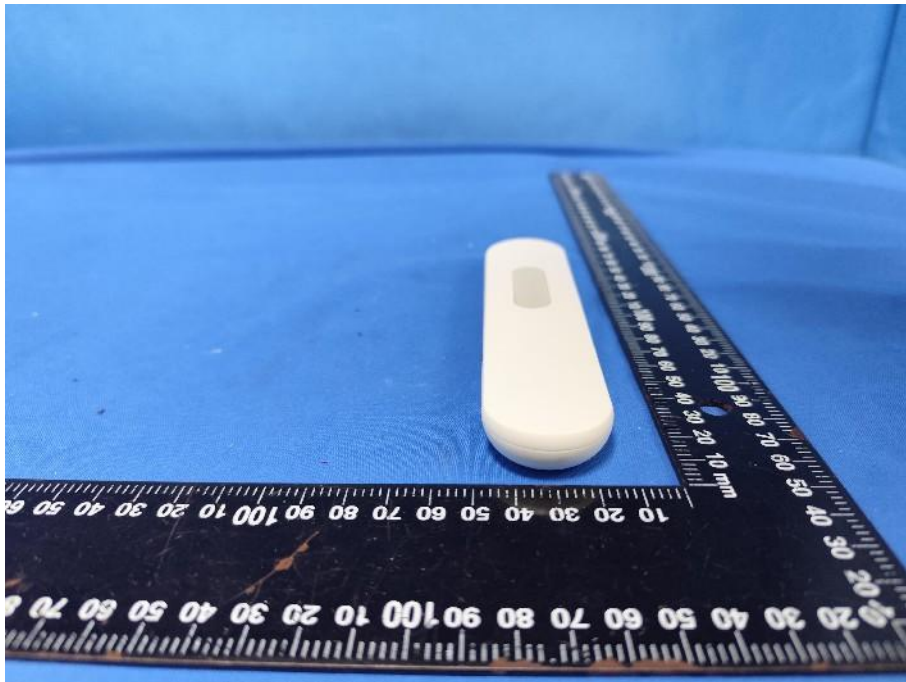


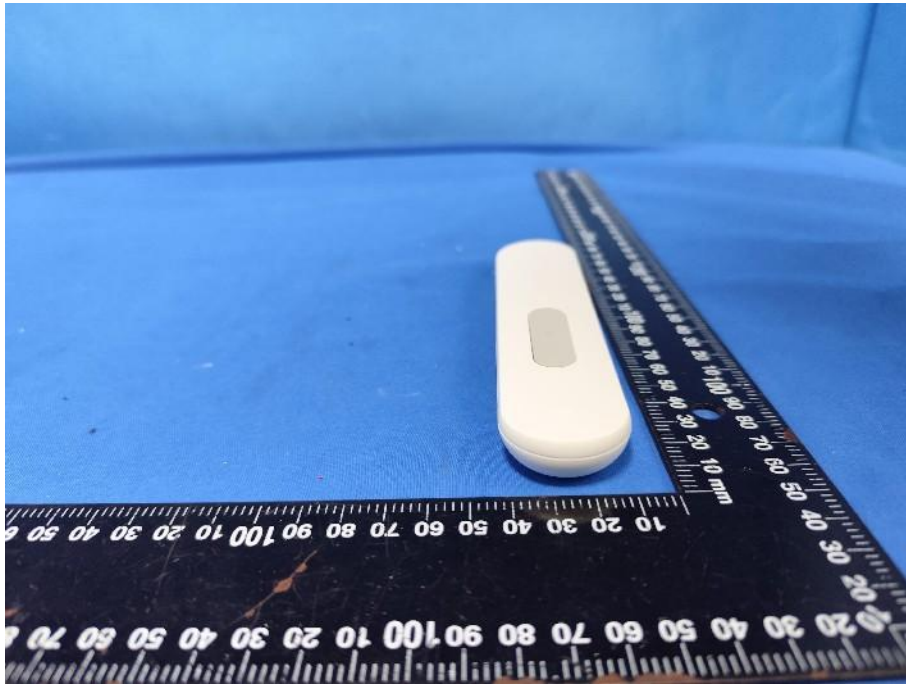
## 7. EXTERNAL AND INTERNAL PHOTOS

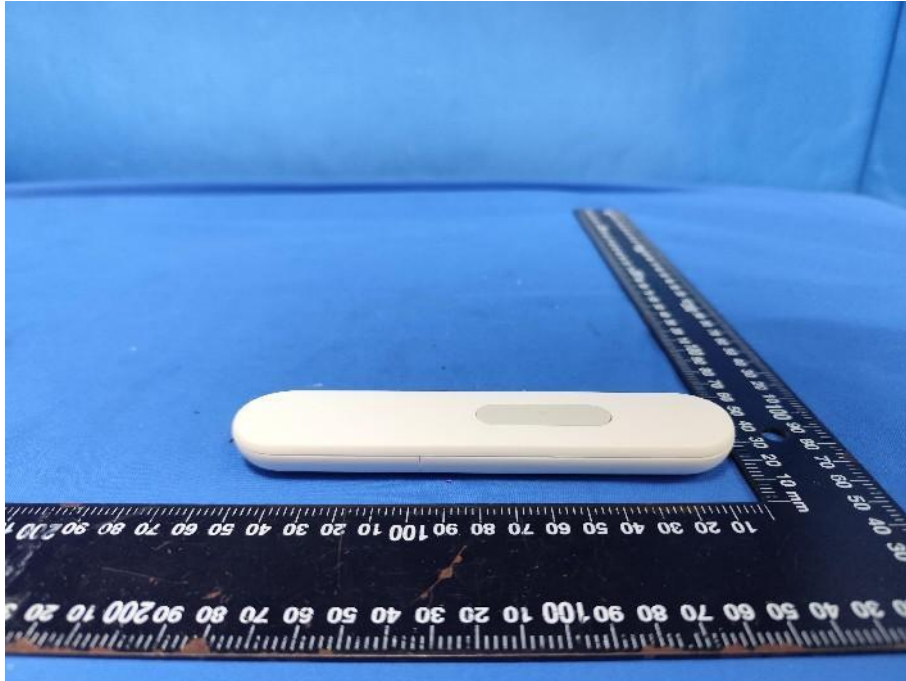
### 7.1 External photos





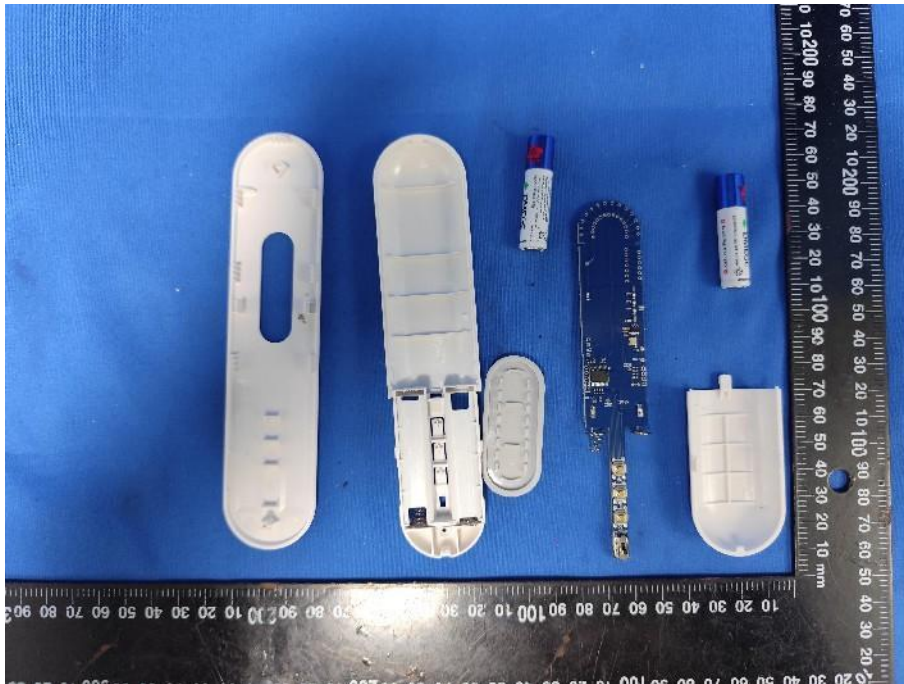


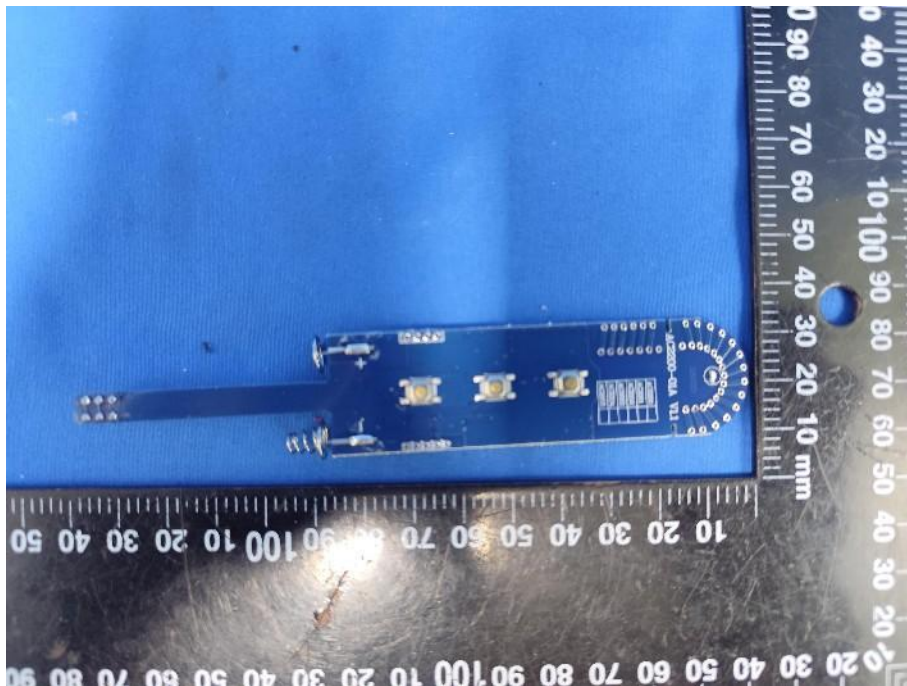
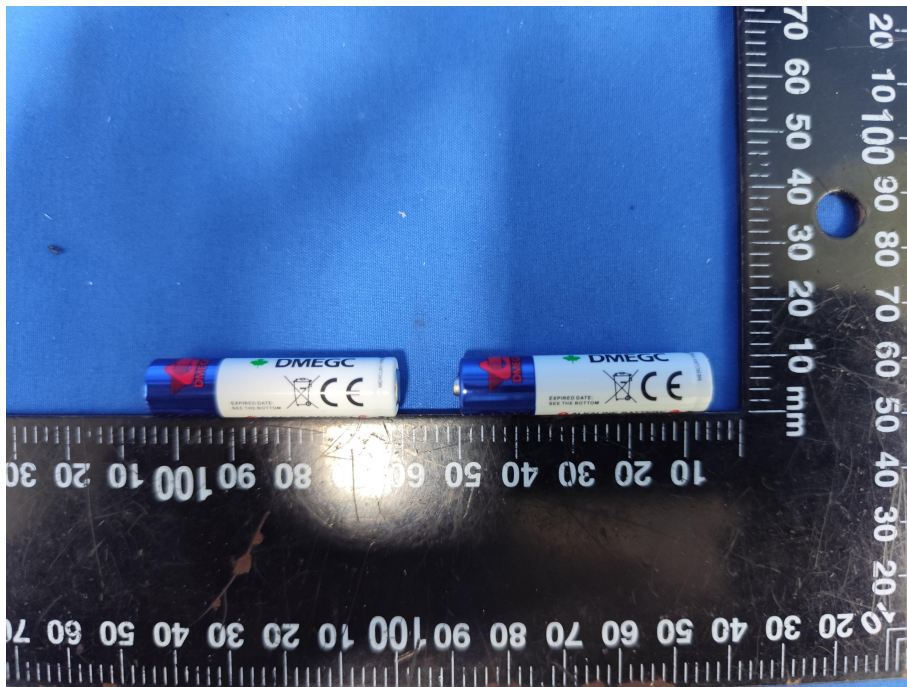




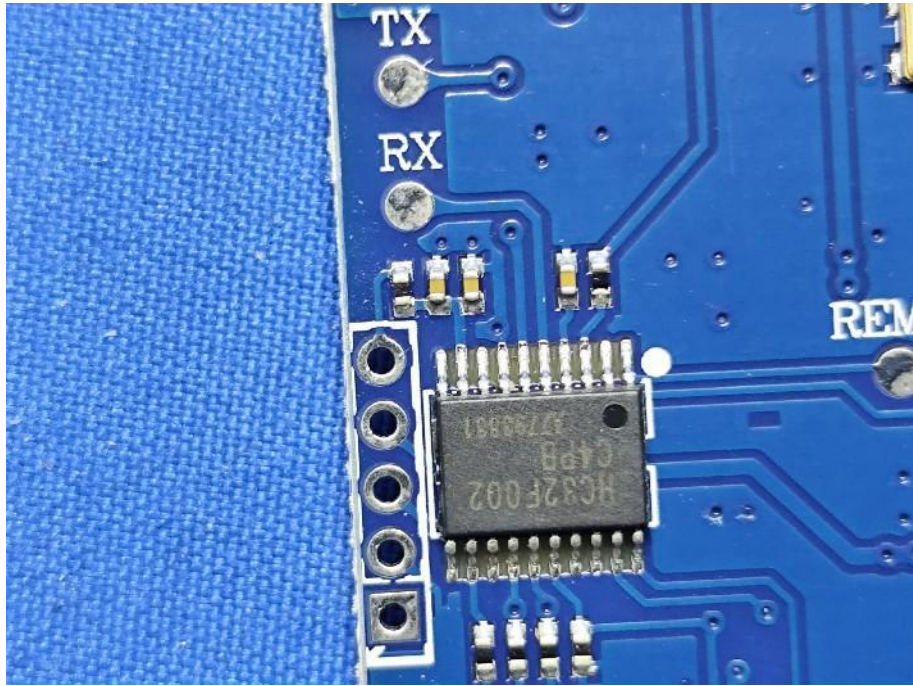
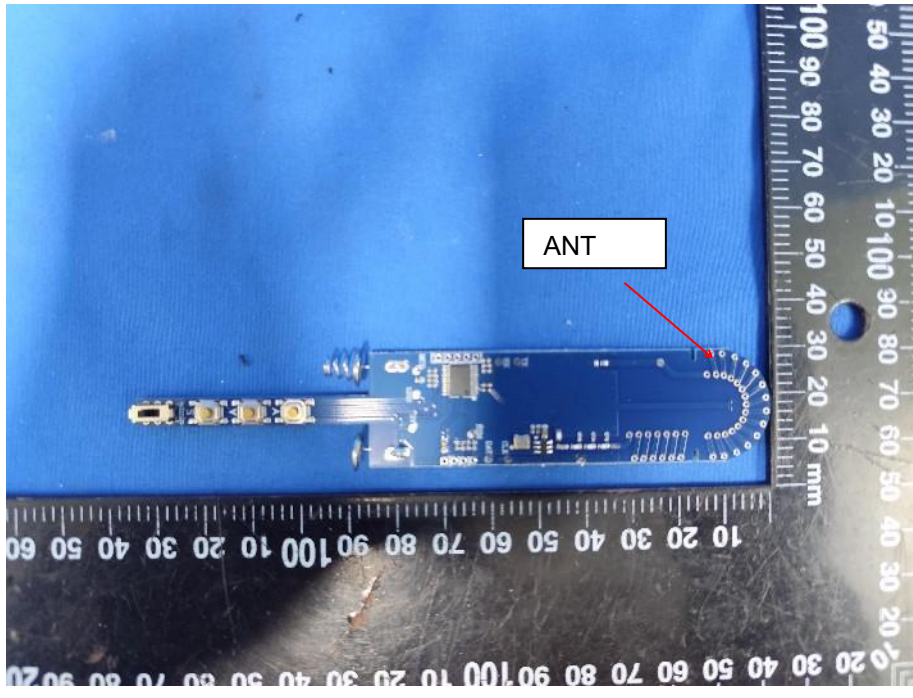


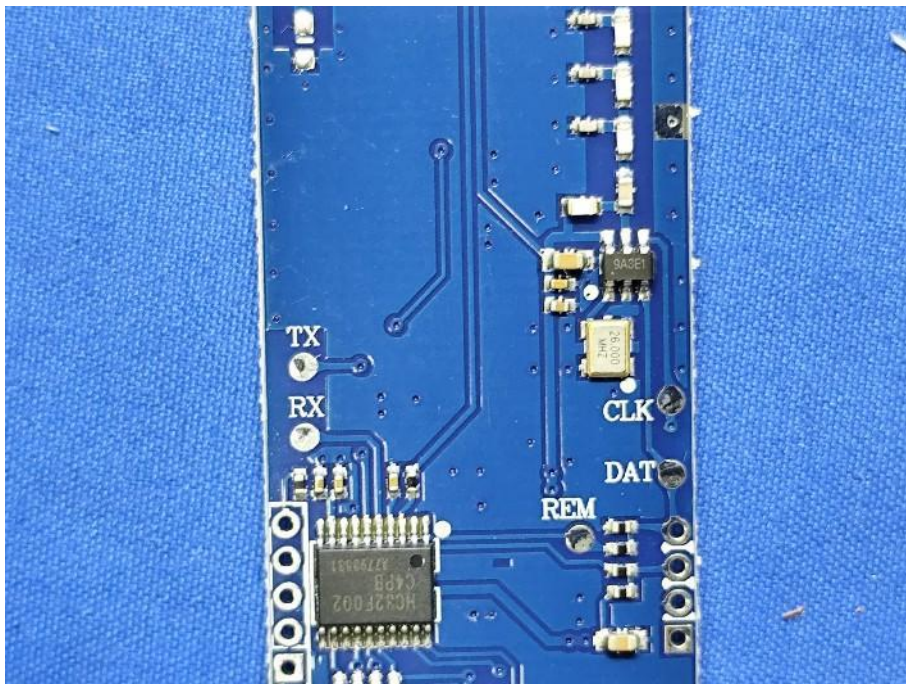
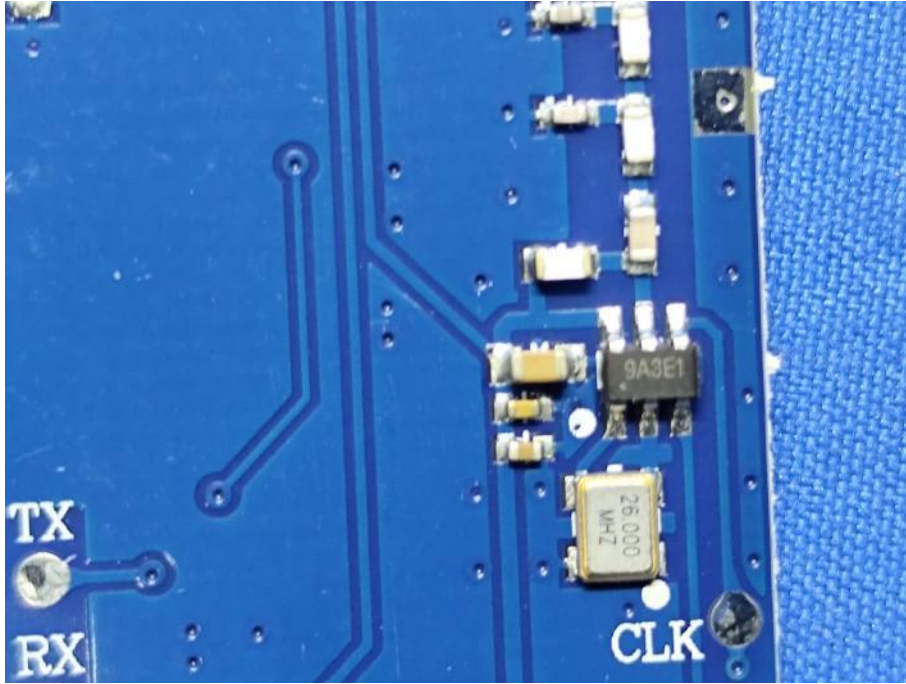
## 7.2 Internal photos











-----End of the report-----