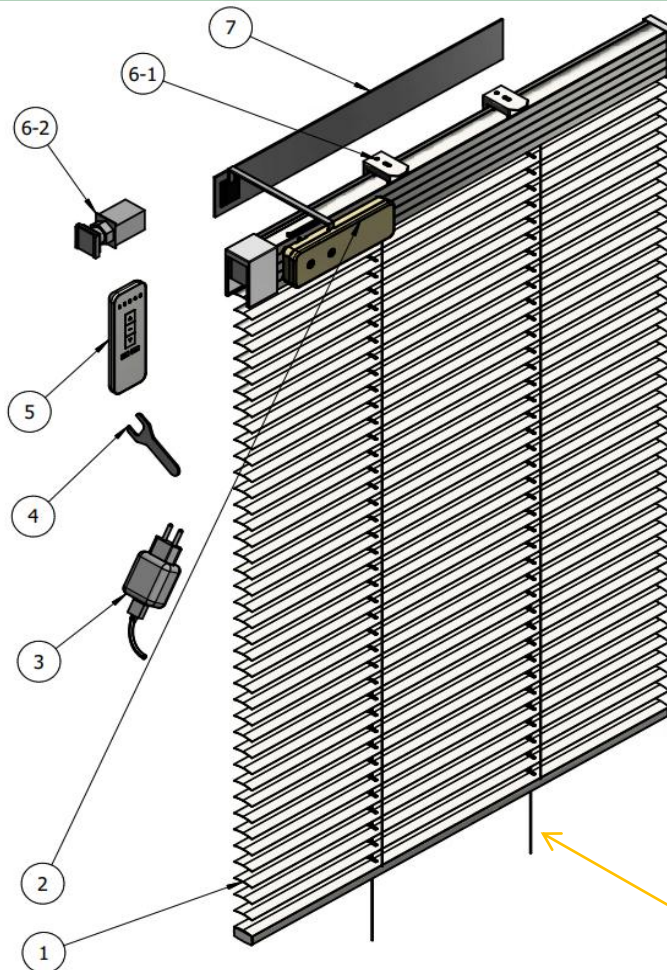


Manual for Rechargeable Motorized Blinds

First of all, thank you for selecting this products. Please take care of it from now on.

Get familiar with the parts.

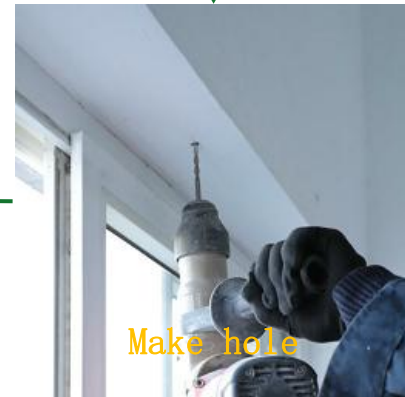
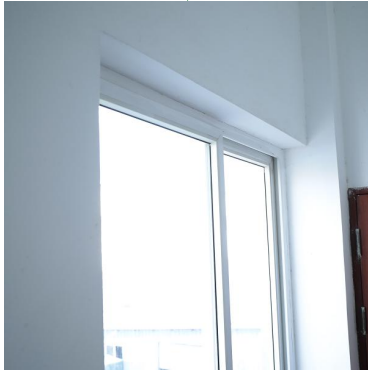


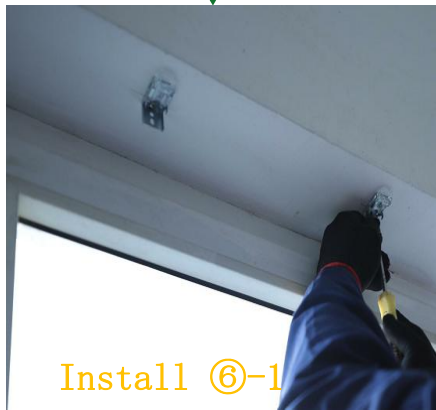
- ① Blind (include header and bottom bar)
- ② Receiver (include rechargeable battery)
- ③ Charger
- ④ Spanner (for ⑥-2, apply only to products less than 30 inches in width)
- ⑤ Remote controller
- ⑥-1 Mounting bracket
width \leq 39 inches, 2 brackets
39 inches $<$ width \leq 65 inches, 3 brackets
width $>$ 65 inches, 4 brackets
- ⑥-2 Mounting spring lever (apply only to products less than 30 inches in width)
- ⑦ Solar panel (for ②)

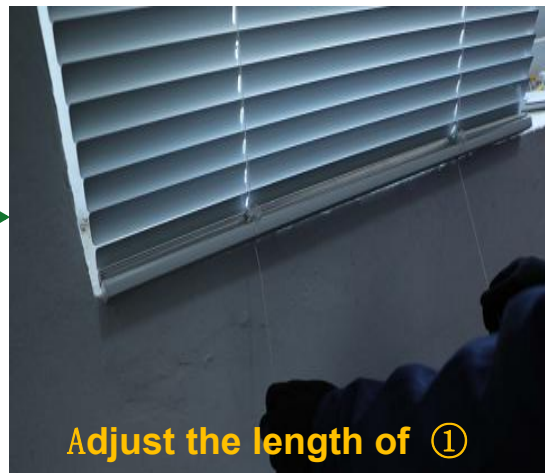
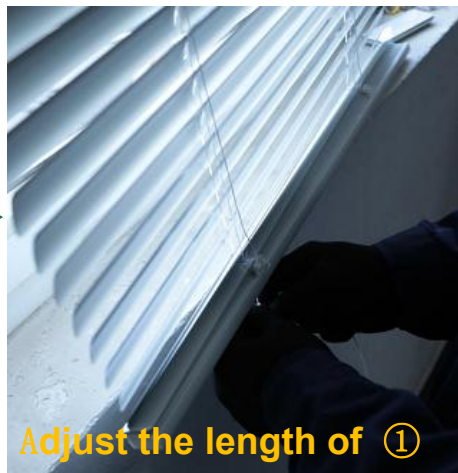
Note: The extension cord at the bottom is used to adjust the length of the blind.

Get your tools ready and start enjoying the hands-on experience..

Ready to install.







⑦ Solar panel is an optional, find a suitable place to paste the installation according to the actual situation of the window, then connect to ②

note: The extension cord at the bottom is used to adjust the length of the blind. Operate ② or ⑤ to fully extend the blind. Then pull out the cord and tie the knots (two knots must be tied in the same place to prevent slipping out of the hole) at the desired length to match the length of your window. It is recommended not to cut the cord off completely so that you can loosen the knot and restore the length of the blind again when you apply it to other windows.

Features

The motor inside this product is driven by lithium battery. The lithium battery is in a controller on the top of product. There are operation buttons on the controller. The controller can be connected to a remote control to operate and removed to charge.

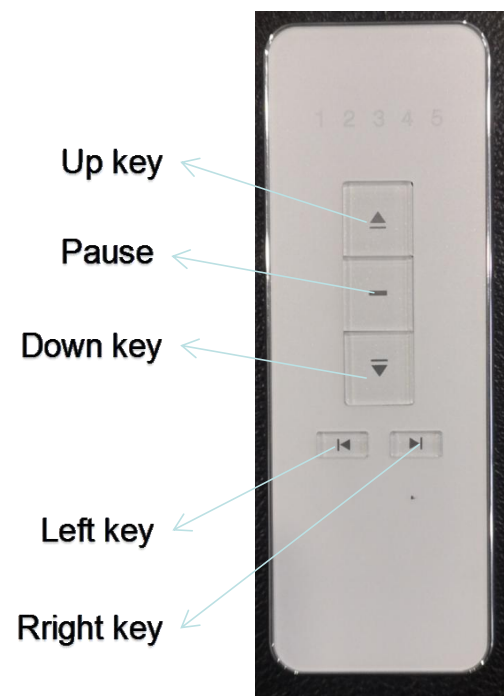
Technical parameters

- 1) Blind's slats width : 25mm
- 2) In the case of continuous testing, run about 240 cycles(raise-lower) on one charge
- 3) Lithium Battery capacity: 4000mAh
- 4) Lithium battery voltage is 3.7V
- 5) Lithium battery charging voltage IS 5.0V
- 6) Lithium battery control switch charging interface, Android 5P
- 7) Frequency:433MHZ

Remote control

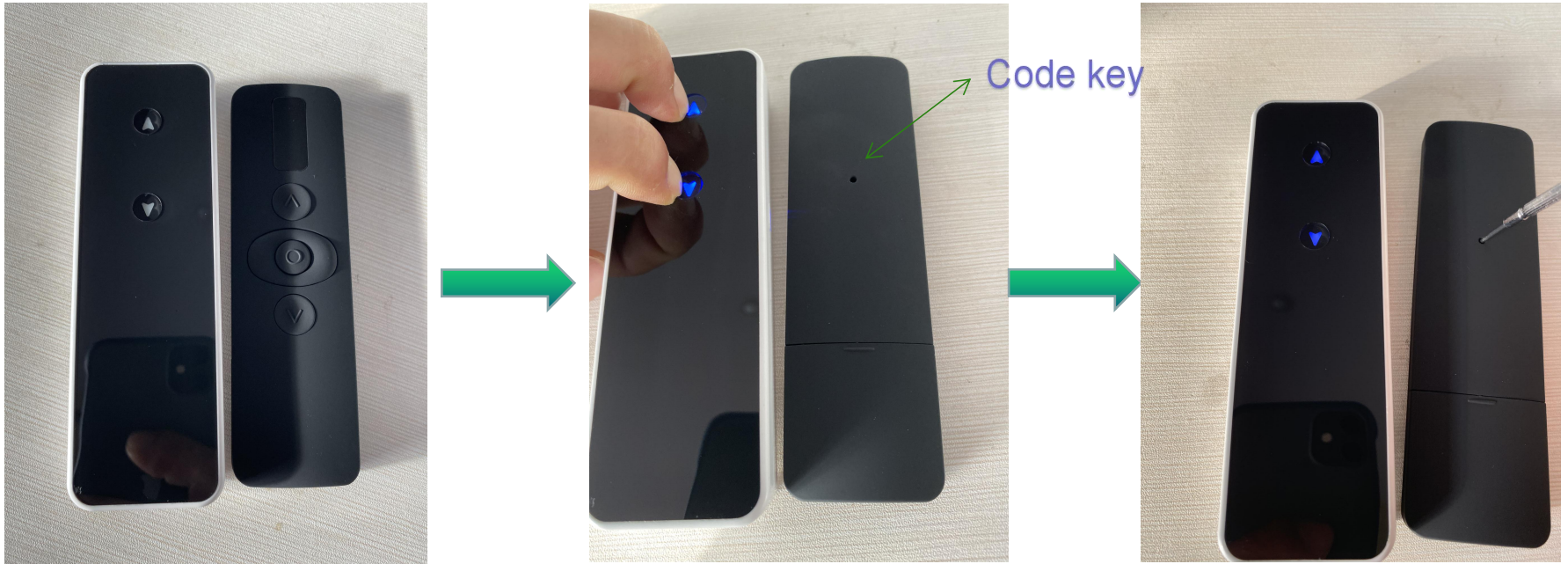
- 1) Remote controls can be bound to or unbound to products at will.
- 2) After binding to multiple products, you can select to control all products at same time on one remote control, or you can just operate a single product .
- 3) Long press the [Up key] or [Down key]---up or down function
Short press the [Up key] or [Down key]---tilt function
press the [left key] or [Right key]-select to operate which blind or enter the multiple control function.

***The product has been bounded to the first position on the remote control by default before leaving factory.**



Match code between remote control and controller

1. Press the [Up key] and [Down key] for more 3 seconds at the same time, loosen the two keys when the lights are light up.
2. Insert with a diameter of less than 1.5mm into the round hole on the back of the remote control and press the code key. When the code key is pressed, the [Up key] and [Down key] of the controller will flicker at the same time, and the code is successfully matched.



Controller unbinding

Press the [Up key] and [Down key] for more 10 seconds at the same time, wait for the lights of the two keys to turn off at the same time, and the unbound is successful.



Cautions

- *Don't hit hard
- *Do not place in high temperatures or in open fires
- *Please install it firmly to prevent falling and hurting people
- *Indoor use only

FCC Caution:

This device complies with part 15 of the FCC Rules. Operation is subject to the following two conditions: (1) This device may not cause harmful interference, and (2) this device must accept any interference received, including interference that may cause undesired operation.

Any Changes or modifications not expressly approved by the party responsible for compliance could void the user's authority to operate the equipment.

Note: This equipment has been tested and found to comply with the limits for a Class B digital device, pursuant to part 15 of the FCC Rules. These limits are designed to provide reasonable protection against harmful interference in a residential installation. This equipment generates uses and can radiate radio frequency energy and, if not installed and used in accordance with the instructions, may cause harmful interference to radio communications. However, there is no guarantee that interference will not occur in a particular installation. If this equipment does cause harmful interference to radio or television reception, which can be determined by turning the equipment off and on, the user is encouraged to try to correct the interference by one or more of the following measures:

- Reorient or relocate the receiving antenna.
- Increase the separation between the equipment and receiver.
- Connect the equipment into an outlet on a circuit different from that to which the receiver is connected.
- Consult the dealer or an experienced radio/TV technician for help.

The device has been evaluated to meet general RF exposure requirement. The device can be used in portable exposure condition without restriction.