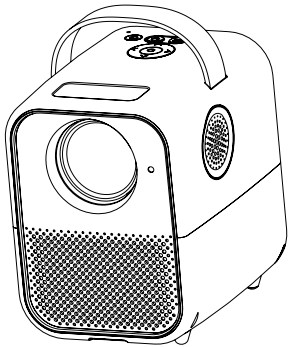


USER'S MANUAL



TRADEMARK Notice

Please read this user's manual carefully and keep it in reserve before using the projector.

Important issues

Please read this user's manual carefully and keep it in reserve before using the projector.

1. Do not install this product where the cold and warm air of air-conditioner blows directly, condensation of water vapor or over high temperature may cause mechanical failure.
2. Ensure that there is adequate ventilation and ventilation is not blocked, in order to prevent the accumulation of hot air in the machine, resulting in the machine temperature too high and malfunction.
3. Prevent foreign matters, such as paper scraps, from falling into the machine. Do not insert any metal objects, such as wire or screwdriver, into the machine. If any foreign matter falls into the machine, please turn off the power immediately and remove it from the machine by qualified professional maintenance personnel.
4. Do not place any liquid on the machine to prevent the risk of leakage of electricity.
5. When handling the projector, please use soft packaging material to protect the lens from scratching. In addition, please do not let the projector bear violent machine vibration.
6. When the projector is used and after the projection is completed, it will be hot near the exhaust port. Touching it with hands may cause scalding.
7. Do not look into the lens while the machine is energized, otherwise it may cause eye injury.
8. To prevent machine failure caused by blockage of the filter screen, please clean the filter screen at least once a month.

Attention

To prevent electric shock, do not open the case. Please entrust professional maintenance personnel for maintenance. To ensure the normal operation of the machine, please clean the filter screen regularly.

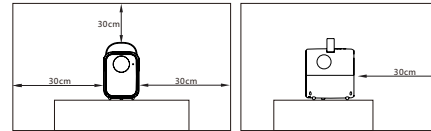
Attention

This label warns the user that there is uninsulated voltage in the unit, which may cause electric shock due to surface magnetic field. Therefore, contacting any part inside the unit is very dangerous.

Warning

To prevent fire or electric shock, do not expose this machine to rain or moisture. In order to prevent fire, do not place the machine in cotton quilt and other flammable materials in use. If consumers use the power adapter to charge, they should purchase and use the matching power adapter with certification to meet the standard requirements.

Important safety precautions

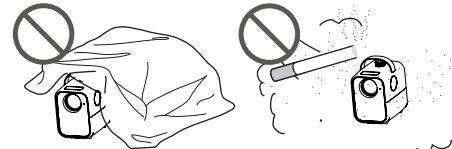


To maintain the performance and reliability of the projector, please leave at least 30cm space between the projector and the wall. The machine should be placed horizontally.



Do not install in a poorly ventilated place

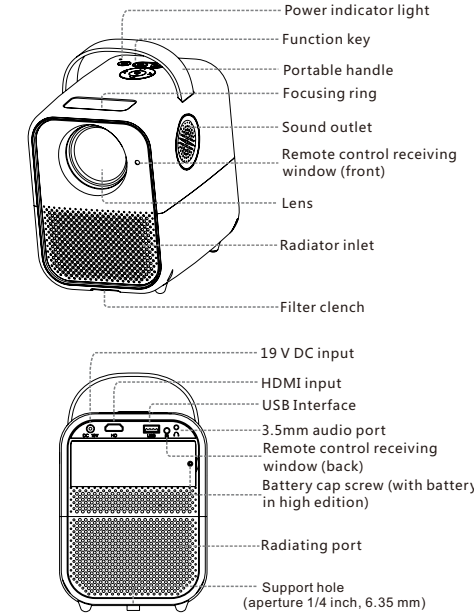
Do not install in hot and humid places



Do not block the vent (intake or exhaust)

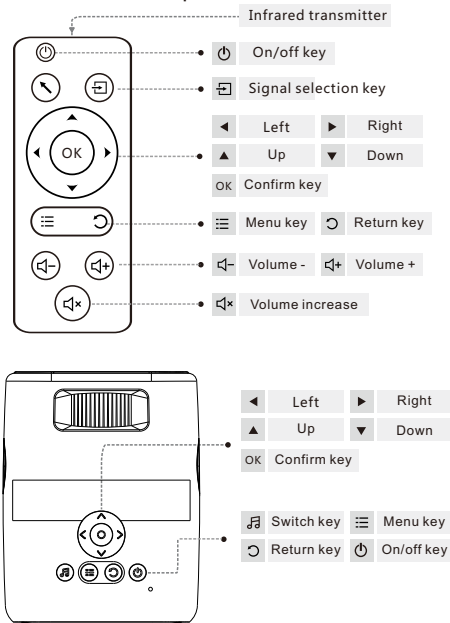
Do not install in dusty and smoky places

Name and Function



Caution: Do not look directly at the lens, in order to prevent causing harm to the eyes!

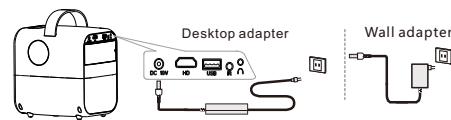
Remote Control and Function Button Description



Due to the continuous improvement of the design, the appearance of the machine may be slightly different from the display of this figure, please refer to the real object.

On/off operation

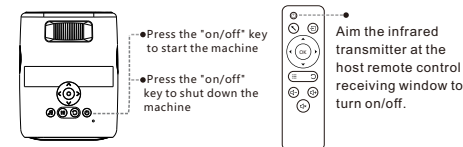
1 Power connection



Insert one end of the adapter into the 19 VDC input port of the host and the other end into the home socket.

Both adapters are available to use, they may be slightly different from the display shown in this figure. Please refer to the real object.

2 Starting and shutting down the machine

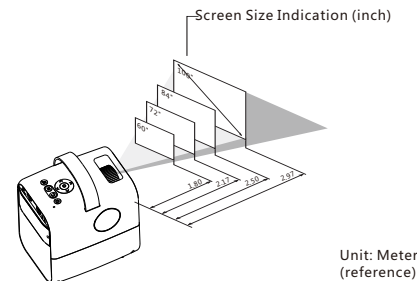


Machine function button: on/off

Remote control on/off (optional)

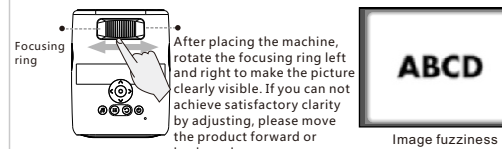
Projection distance reference and picture adjustment

1 Projection distance reference



Unit: Meter (reference)

2 Picture definition control

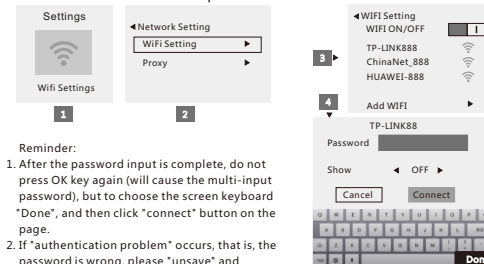


Tip: the machine must be placed horizontally, if the height is not enough, you have to take something to pad the machine up. The machine must not be lifted, otherwise the edge of image may not be clear.

Connection settings

1 WIFI connection

1. In the main interface, select all applications--Settings--WIFI settings (Figure 1), and press OK to enter the WIFI settings interface (Figure 2).
2. Select the WIFI network that need to be connected (Figure 3), press OK to enter, pop up the password keyboard input box, enter the password, click "Finish" button on the soft keyboard (Figure 4 lower right corner), and click "Connect" to complete the WIFI connection.



Reminder:

1. After the password input is complete, do not press OK key again (will cause the multi-input password), but to choose the screen keyboard "Done", and then click "connect" button on the page.
2. If "authentication problem" occurs, that is, the password is wrong, please "unsaved" and re-enter the correct password for connection (it is recommended to open "show password" to check password input); if "saved" prompt instead of "connected" is shown, it may be caused by the conflict of WIFI environment or the limitation of router's settings. It is recommended that the investigation should be carried out in the following ways:
 - A. Turn off the WIFI switch for a few seconds, then reopen it to see if it can be reconnected correctly;
 - B. Restart the router and try to connect the projector to the WiFi first. (For example, if you have a mobile phone connected to the same WiFi in your home, it is recommended to turn off the WiFi of the mobile phone first, and check if it is normal when the projector connects to the WiFi alone.)
 - C. Turn on the hotspot of the mobile phone, let the projector be directly connected to the hotspot of the mobile phone, and check whether it can be connected normally. If it is normal, it means there is no problem with the WiFi module of the projector, you can shift the direction of the checking to the router's settings, whether there are too many devices connected, and other factors.

HDMI HD and Bluetooth connection

1 HDMI HD connection

Mode 1. directly press the "switch key" on the fuselage or the signal selection key (⏮) on the remote control to enter the "signal source selection interface". Select the needed signal source through the direction key (Figure 1. After selecting the needed signal source icon, press the OK key).

Mode 2. (only in the Android interface): Desktop → Settings → Signal Source (Figure 2) (Mode 2 describes the pending, modified according to the actual situation of the system) (⏮) icon lit up, indicating that the USB flash disk has been inserted.



Figure 1

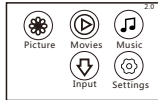
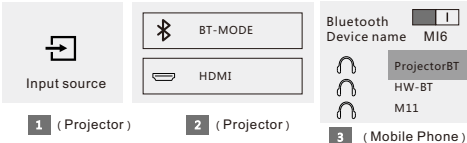


Figure 2

Due to the continuous improvement of the design, the software interface may be slightly different from the display of this figure, please refer to the real object.

2 Bluetooth connection (smart version)



- Press the switch key on the fuselage or the signal selection key on the remote control (⏮ Figure 1) to enter the signal source selection interface. Switch the needed signal source through the direction key to switch (Figure 2. After you select the (⏮) icon, press OK).
- After entering the Bluetooth connection mode of the mobile phone, click the Bluetooth device name of the Projector (such as Projector BT). After the connection is completed, the projector can play music on the mobile phone.

Push and mirror the same screen as mobile phone (smart version)

Preparation for push and mirror on the same screen

- When using the "push and mirror on the same screen" function, the smart machine must be connected to the same WiFi environment as the mobile phone (or the projector be directly connected to the phone's hotspot, which is also "the same WiFi").
- Open the "same screen APP" on the projector (pre-installed by the factory is the "HappyCast" APP, which can be found on the desktop or in "all applications").

Reminder: For the first time to use, "HappyCast" will prompt "whether to allow device connection", select "allow" to carry out the next step.

1 "Push the screen" video to the mobile phone (smart version)

- Open the video APP on the mobile phone (such as Tencent video, Youku, iQiyi and so on. Reminder: Make sure the **mobile phone is connected to the same WiFi** as the projector.

- Click on the film you want to see. In the movie playing window, usually, there will be a "TV" logo in the upper right corner, click to enter the "push screen". Click "search screen device" to find "HappyCast XX" (such as the HappyCast Q2 in the right figure) and click to connect, then the connection is completed.

Schematic diagram of HappyCast screen

2 "Mirror screen synchronization" mobile phone screen (smart version)

Apple phone "mirror screen synchronization" (support iOS6 or more) Partial push icon style

- Open the AirPlay in the Apple phone (usually in the control center of a slide screen).
- Search devices, find "HappyCast XX" and connect to it, then picture synchronization is completed.

Android phone "mirror screen synchronization" (Android 5.3 or above)

- Download "HappyCast" APP on the mobile phone, install APP correctly and open it;
- By default, the APP will automatically search the devices with the "HappyCast TV" enabled in the same WiFi environment, and display the "HappyCast XX" (that is, the one you're currently opening on your projector).
- Click the device number "HappyCast XX" to connect, click on "Start immediately", and the picture synchronization is completed.

Reminder: currently only some Android phones such as Xiaomi will sync the sound by default; for other Android phones, you can turn on the "recording" permission to achieve synchronization, or connect the phone directly to the external Bluetooth stereo)

Common trouble and troubleshooting of projector

1 Remote control insensitive or unresponsive

- Please check if the remote control battery is properly installed
- Please try to replace the battery to eliminate the problem of insufficient battery capacity
- When remote control projector, please let infrared signal of remote control enter infrared receiving window as far as possible.

2 Unable to power on

- Please check whether the power cord is connected correctly, whether the machine power indicator light is on, if it is still unable to power up, please try to plug and unplug the power again.

3 After starting up for a period of time, the black screen or screen display is abnormal

- Please check if the machine intake and outlet are blocked, or if the filter has not been cleaned for a long time
- Whether the cooling fan works properly (if abnormal, please return the machine to the factory for maintenance)
- Please try to re-plug the power, restart

4 No network connection

- Please check whether the WIFI password is correct. If the password is wrong, it will display "saved", please re-enter the password.
- If WIFI user name is a Chinese name, please try to use numbers and English
- Mobile phone hotspot mode can be used to troubleshoot wireless routers

5 Show blurred or unclear picture

- Please check whether the lens is clean, use soft dry cotton cloth to wipe, if the dirt is especially serious, neutral detergent can be used to wipe, do not use water, benzene or other solvents, lest cause lens coating peeling off.
- Use the focusing ring to re-adjust the sharpness.
- If the environment is too bright, lower the ambient brightness (pull up the curtains, turn off the lights, etc.).

Picture synchronization of mobile phone screen (screen synchronization version)

In the "screen synchronization" main page, select the corresponding tags by need to enter (respectively: Apple mirror screen synchronization, Android mirror screen synchronization, push the screen). The "push-and-drop" or "fly-and-drop" approach, regardless of whether it's an Apple phone or an Android phone, is a portal. There will be operation tips on the interface.

1 Screen synchronization without WIFI network

Apple phone screen synchronization (support iOS6 or above)

- Select the "Apple Screen Synchronization" entry in the projector and pay attention to the device name shown above;
- Open the WiFi on the phone, find the device name of the projector, and clicks to connect (default password: 12345678);
- After connected to the projector WiFi, open the screen mirror in the mobile phone's slide-screen control center → the device number of the projector can be displayed in the device list → click to connect → (the first connection will also ask if you trust) → the mirror screen synchronization is completed.

Android phone screen synchronization (Android 5.3 or above)

- Select the "Android same screen" in the projector (the WiFi of the mobile phone, the data flow switch should be opened)
- Open the "wireless screen" function (or "screen mirror", "multi-screen interaction" and so on, specifically according to the mobile phone model inquire mobile phone manufacturers), the mobile phone will automatically search devices nearby which can be screen-synchronized (that is, the projector), after the search to the "device", you can check whether it is the "device name" displayed on the projector interface, after confirmation, the phone can click on the device name to connect → screen synchronization completed.

2 Screen synchronization in the same WiFi

Screen synchronization signal source interface → Settings → network settings → Find the WiFi that the mobile phone is connected to and click → Enter the WiFi password, save and connect → Make sure the "connected" is shown, the you can return to the upper level of the screen synchronization interface.

Apple phone screen synchronization (support iOS6 or above)

- Select the "Apple screen synchronization" entry and pay attention to the "device name" shown below;
- Open the "screen mirror" on the mobile phone in the slide screen control center of the mobile phone → click on the projector number displayed in the list of connected devices

Push screen

Available only when there is a network. The "push-and-drop" approach doesn't distinguish mobile phones. As long as the projector already connected to the same WiFi as the phone, it operates in a way similar to the smart version

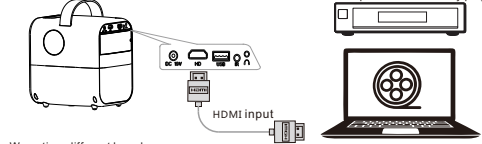
Connection settings (different versions of projectors are introduced)

1 Projector (Multimedia Edition)

Function Introduction of Display Panel Version Machine

All the contents played on display panel version of the projector comes from HDMI input. It just plays the content transmitted from laptop, set-top box and so on through the projector.

HD devices such as set-top boxes and Blu-ray players.



Warm tips: different brands, different models of the computer's external output signal shortcut keys have all the different detailed in computer instructions. Press the Windows key (⊞) or Fn key on the keyboard and hold down the key with (⏮) or "P" on the keyboard. The window where the computer pops up selects "copy" or "display screen 2 only"

2 Projector (screen synchronization version)

Function Introduction of the Screen Synchronization version machine

The content of the screen synchronization version projector can be from HDMI input, or the mobile phone picture can be sent to the projector via WiFi, which can be played out by the projector.

3 Projector (Smart Edition)

Function introduction of smart version the machine

The biggest feature of the smart version projector is that after the machine connected to WIFI, you can install various applications to play network audio and video content, you can also play HDMI input content.

Reminder: push screen and mirror same screen introduction

"Push the screen":

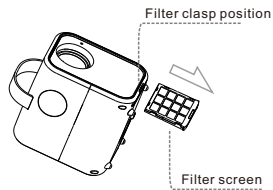
Often used to play films in video APP (such as Tencent video, Youku, iQiyi etc.), and after the screen is synchronized, the mobile phone can be freely operated, it will not affect the projector to play your video on demand;

"Mirror screen synchronization":

Synchronize the phone picture to the projector device. As the name implies, "What is displayed on a mobile phone is what is played on the projector." Because the principle and "screen" is very different from the screen synchronization, the image transmission in mirror mode will have some delay, it is a normal phenomenon, please be informed! The specific degree of delay will be related to the hardware configuration of the phone and the fluency of the WiFi environment.)

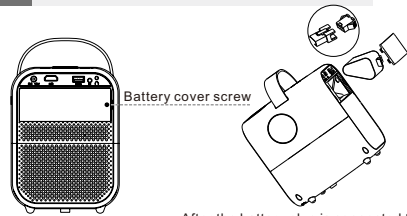
Filter cleaning and battery installation

1 Filter cleaning



After pulling the filter from the clasp position, clean the dust adhered to the filter, and make sure to install the filter back. (It is recommended to clean the filter once a month to prevent the blocking of the filter, that may cause machine failure.)

2 Battery installation (only for machines with battery)



Remove the battery cover screws and open the battery cover.

After the battery plug is connected to the host, put the battery into the battery compartment as shown in the figure, put the battery cover back and lock the screw behind the cover.

Reminder: due to different version of the design will be different, whether the battery can be removed depends on real object.

Common trouble and troubleshooting of projector

6 Machine picture stuck

- Try pressing the off button on the remote control and restart the machine. If the button still can't make the screen change, try power-off for 10 minutes, then replug the adapter to start the machine.

7 Serious delay in the HappyCast or video play

- Check the network environment and try to reduce the number of WIFI router access devices, or reduce the source resolution settings. (Checking if other devices in the same WIFI have influence, you can connect the projector directly to the hotspot of the mobile phone for one-way test. That is: open the hotspot on the mobile phone → open the WIFI search in the projector and connect to the mobile phone hotspot → then carries on the mirrored same-screen operation. If there is still a serious delay, you can modify various screen parameters in the settings of HappyCast or projector and try again. You can also reduce the same screen resolution and frame rate before trying again).

FCC Statement

This device complies with part 15 of the FCC Rules. Operation is subject to the following two conditions: (1) This device may not cause harmful interference, and (2) This device must accept any interference received, including interference that may cause undesired operation.

Any Changes or modifications not expressly approved by the party responsible for compliance could void the user's authority to operate the equipment.

Note: This equipment has been tested and found to comply with the limits for a Class B digital device, pursuant to part 15 of the FCC Rules. These limits are designed to provide reasonable protection against harmful interference in a residential installation. This equipment generates uses and can radiate radio frequency energy and, if not installed and used in accordance with the instructions, may cause harmful interference to radio communications. However, there is no guarantee that interference will not occur in a particular installation. If this equipment does cause harmful interference to radio or television reception, which can be determined by turning the equipment off and on, the user is encouraged to try to correct the interference by one or more of the following measures:

- Reorient or relocate the receiving antenna.
- Increase the separation between the equipment and receiver.
- Connect the equipment into an outlet on a circuit different from that to which the receiver is connected.
- Consult the dealer or an experienced radio/TV technician for help.

RF warning:

This equipment complies with FCC radiation exposure limits set forth for an uncontrolled environment. This equipment should be installed and operated with minimum distance 20cm between the radiator & your body.